



# City of Chicago



O2015-5189

Office of the City Clerk

## Document Tracking Sheet

<b>Meeting Date:</b>	6/17/2015
<b>Sponsor(s):</b>	Reilly (42)
<b>Type:</b>	Ordinance
<b>Title:</b>	Grant(s) of privilege in public way for 227 Monroe Street, Inc.
<b>Committee(s) Assignment:</b>	Committee on Transportation and Public Way

ORDINANCE  
227 MONROE STREET, INC  
Acct. No. 87253 - 1  
Permit No. 1116995

*Be It Ordained by the City Council of the City of Chicago:*

SECTION 1. Permission and authority are hereby given and granted to 227 MONROE STREET, INC, upon the terms and subject to the conditions of this ordinance to maintain and use, as now constructed, four (4) Vault(s) under the public right-of-way adjacent to its premises known as 222 W. Adams St..

Said Vault(s) at W. Adams Street 1st Level measure(s):

One (1) at two hundred eleven (211) feet in length, and seven (7) feet in width for a total of one thousand four hundred seventy-seven (1477) square feet.

Said Vault(s) at W. Adams Street 2nd Level measure(s):

One (1) at two hundred eleven (211) feet in length, and seven (7) feet in width for a total of one thousand four hundred seventy-seven (1477) square feet.

Said Vault(s) at S. Franklin Street 1st Level measure(s):

One (1) at two hundred two point five (202.5) feet in length, and eight (8) feet in width for a total of one thousand six hundred twenty (1620) square feet.

Said Vault(s) at S. Franklin Street 2nd Level measure(s):

One (1) at two hundred two point five (202.5) feet in length, and eight (8) feet in width for a total of one thousand six hundred twenty (1620) square feet.

The location of said privilege shall be as shown on prints kept on file with the Department of Business Affairs and Consumer Protection and the Office of the City Clerk.

Said privilege shall be constructed in accordance with plans and specifications approved by the Department of Transportation (Office of Underground Coordination).

This grant of privilege in the public way shall be subject to the provisions of Section 10-28-015 and all other required provisions of the Municipal Code of Chicago.

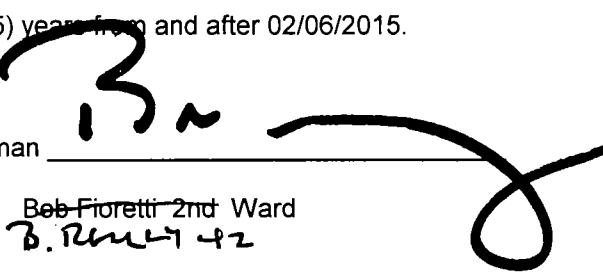
The grantee shall pay to the City of Chicago as compensation for the privilege #1116995 herein granted the sum of twenty-five thousand three hundred seventy-five (\$25,375.00) per annum in advance.

A 25% penalty will be added for payments received after due date.

The permit holder agrees to hold the City of Chicago harmless for any damage, relocation or replacement costs associated with damage, relocation or removal of private property caused by the City performing work in the public way.

Authority herein given and granted for a period of five (5) years from and after 02/06/2015.

Alderman



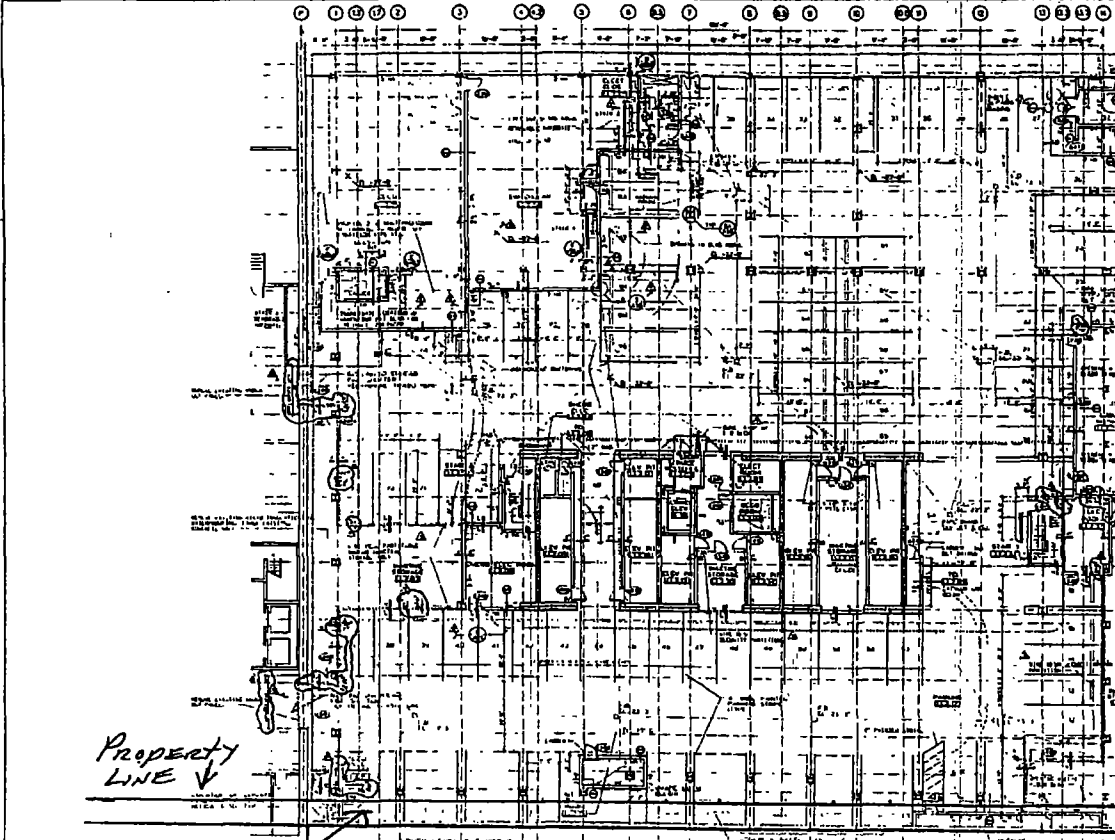
Bob Fioretti 2nd Ward

B. Fioretti 42

Handwritten scribbles or marks, possibly initials or a signature, located in the lower-left quadrant of the page.

222 West Adams Property Line →

7' WIDE



Property Line ↓

8' WIDE

202'6"

211'

SOM  
Chicago Illinois

William Hensley  
& Associates Ltd  
Chicago Illinois

- REFER TO:
- 1. CIVIL ENGINEER'S PLAN
  - 2. STRUCTURAL ENGINEER'S PLAN
  - 3. MECHANICAL ENGINEER'S PLAN
  - 4. ELECTRICAL ENGINEER'S PLAN
  - 5. PLUMBING ENGINEER'S PLAN
  - 6. HEATING ENGINEER'S PLAN
  - 7. AIR CONDITIONING ENGINEER'S PLAN
  - 8. ARCHITECT'S GENERAL NOTES
  - 9. ARCHITECT'S SPECIFICATIONS
  - 10. ARCHITECT'S CONTRACT DOCUMENTS
  - 11. ARCHITECT'S PRELIMINARY PLANS
  - 12. ARCHITECT'S CONCEPTUAL DESIGN
  - 13. ARCHITECT'S SITE PLAN
  - 14. ARCHITECT'S EXTERIOR ELEVATIONS
  - 15. ARCHITECT'S INTERIOR ELEVATIONS
  - 16. ARCHITECT'S SECTION CUTS
  - 17. ARCHITECT'S PERSPECTIVE DRAWINGS
  - 18. ARCHITECT'S RENDERINGS
  - 19. ARCHITECT'S MATERIAL SAMPLES
  - 20. ARCHITECT'S COLOR SAMPLES
  - 21. ARCHITECT'S LIGHTING FIXTURE SCHEDULE
  - 22. ARCHITECT'S FURNITURE SCHEDULE
  - 23. ARCHITECT'S APPLIANCE SCHEDULE
  - 24. ARCHITECT'S FINISH SCHEDULE
  - 25. ARCHITECT'S HARDWARE SCHEDULE
  - 26. ARCHITECT'S GLASS SCHEDULE
  - 27. ARCHITECT'S METAL SCHEDULE
  - 28. ARCHITECT'S CERAMIC SCHEDULE
  - 29. ARCHITECT'S FABRIC SCHEDULE
  - 30. ARCHITECT'S WOOD SCHEDULE
  - 31. ARCHITECT'S PAINT SCHEDULE
  - 32. ARCHITECT'S STAIN SCHEDULE
  - 33. ARCHITECT'S GROUT SCHEDULE
  - 34. ARCHITECT'S SEALANT SCHEDULE
  - 35. ARCHITECT'S ADHESIVE SCHEDULE
  - 36. ARCHITECT'S FASTENER SCHEDULE
  - 37. ARCHITECT'S FASTENER SCHEDULE
  - 38. ARCHITECT'S FASTENER SCHEDULE
  - 39. ARCHITECT'S FASTENER SCHEDULE
  - 40. ARCHITECT'S FASTENER SCHEDULE
  - 41. ARCHITECT'S FASTENER SCHEDULE
  - 42. ARCHITECT'S FASTENER SCHEDULE
  - 43. ARCHITECT'S FASTENER SCHEDULE
  - 44. ARCHITECT'S FASTENER SCHEDULE
  - 45. ARCHITECT'S FASTENER SCHEDULE
  - 46. ARCHITECT'S FASTENER SCHEDULE
  - 47. ARCHITECT'S FASTENER SCHEDULE
  - 48. ARCHITECT'S FASTENER SCHEDULE
  - 49. ARCHITECT'S FASTENER SCHEDULE
  - 50. ARCHITECT'S FASTENER SCHEDULE

NO.	DESCRIPTION	DATE
1	PRELIMINARY	10/1/58
2	CONCEPTUAL	10/15/58
3	SCHEMATIC	10/30/58
4	PRELIMINARY	11/15/58
5	FINAL	12/1/58

USG  
BUILDING

LOWER LEVEL 2  
FLOOR PLAN

A-2