



City of Chicago



Or2016-168

Office of the City Clerk

Document Tracking Sheet

Meeting Date:	3/14/2016
Sponsor(s):	Solis (25)
Type:	Order
Title:	Issuance of permits for sign(s)/signboard(s) at 2800 S Ashland Ave 181 sq. ft.
Committee(s) Assignment:	Committee on Zoning, Landmarks and Building Standards

Committee on Zoning, Landmarks
and Building Standards
City Council Meeting
Alderman Daniel S. Solis – Ward 25
Sign Order

ORDERED, that the Commissioner of Buildings is hereby directed to issue a sign permit to:

LANDMARK SIGN GROUP
7424 INDUSTRIAL AVE.
CHESTERTON, IN 46304

For the erection of a sign/signboard over 24 feet in height and/or over 100 square feet (in area of one face) at:

QTS
2800 S. Ashland Ave.
Chicago, IL 60608

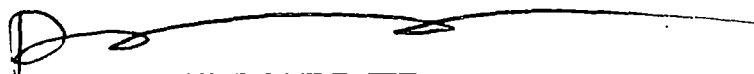
Dimensions: length 31'-6" height 5'-9"

Height above grade/roof to top of sign 30'-9" feet

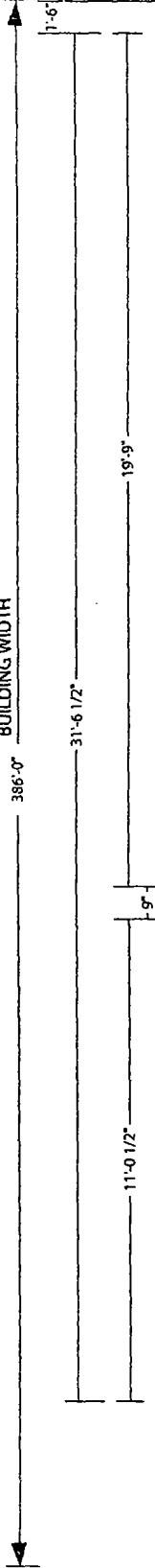
Total Square Foot Area 181 square feet

Elevation SOUTH (Permit #100628584)

Such sign shall comply with all applicable provisions of TITLE 17 of the Chicago Zoning Ordinance and all other applicable provisions of the Municipal Code of the City of Chicago governing the construction and maintenance of outdoor signs, signboards and structures.


Alderman Daniel S. Solis
WARD 25

BUILDING WIDTH
386'-0"



QTS CHICAGO

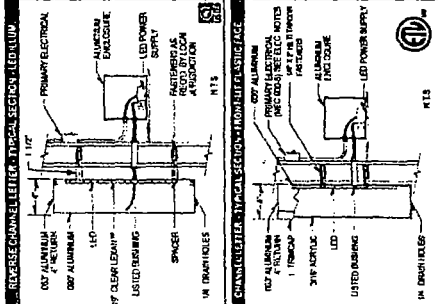
BUILDING EDGE

Front View 3/8" = 1'-0"
EAST ELEVATION

ONE REVERSE CHANNEL LOGO/ ONE SET OF PLEX FACE CHANNEL LETTERS/ INTERNALLY ILLUMINATED WITH LED'S MOUNT TO GROOVED METAL WALL/ ILLUMINATION = WHITE LED'S

Q LOGO FACE & 5" RETURNS = MAP TO MATCH PANTONE 186C

Q QTS and CHICAGO FACES = WHITE PLEX with PANTONE COOL GREY 11 (GRAPHITE) PERF RETURNS = MAP WHITE TRIM CAP = WHITE ILLUMINATION = WHITE LED'S

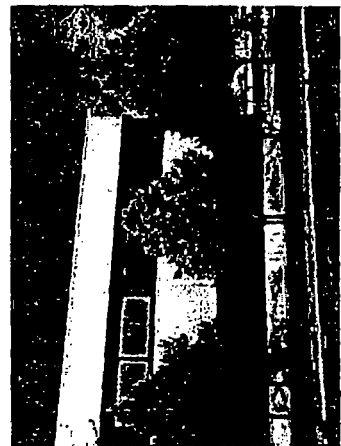


UL #E216001	Landmark Sign Group
Sign Type:	Channel Letters
Overall Size:	5'-9" x 31'-6 1/2"
Square Footage	181.364 S.F.
Approx Weight:	290 lbs
Volt/Amps Load:	4Amps @ 120v AC
Branch Circuit(s) Required:	(1) 20Amp
Lamp:	LED
Watts	480.00
Power Supplies:	4
Business License #	399167

1'-6" FROM BUILDING EDGE



EAST ELEVATION AFTER - N.T.S.



EAST ELEVATION BEFORE - N.T.S.

Designed For
110 Volts

Electrical Connection will be Visible within 5 Ft. at time of Installation.
Second Trip will be Charged at Time & Material

THIS DRAWING IS THE PROPERTY OF LANDMARK SIGN GROUP, INC. AND IS NOT TO BE REPRODUCED OR COPIED IN ANY MANNER WITHOUT THE EXPRESS WRITTEN CONSENT OF LANDMARK SIGN GROUP, INC. ANY REPRODUCTION OR COPIING IS PROHIBITED AND WILL BE SUITED TO THE REPAIRING.