



# City of Chicago



Or2014-345

Office of the City Clerk

## Document Tracking Sheet

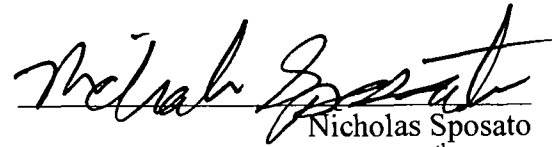
<b>Meeting Date:</b>	7/30/2014
<b>Sponsor(s):</b>	Sposato (36)
<b>Type:</b>	Order
<b>Title:</b>	Issuance of permits for sign(s)/signboard(s) at 8300 W Belmont Ave
<b>Committee(s) Assignment:</b>	Committee on Zoning, Landmarks and Building Standards

ORDERED, That the Commissioner of Buildings is hereby directed to issue a sign permit to South Water Signs, 934 North Church Rd, Elmhurst, IL 60126 for the erection of a sign/signboard over 24 feet in height and/or over 100 square feet (in area of one face) at:

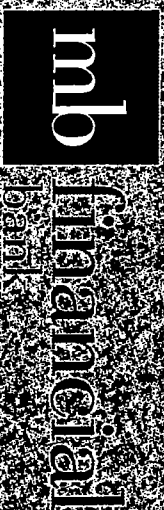
MB Financial-8300 W. Belmont Ave, Chicago, IL 60634

Dimensions: length, 8 Feet; height, 20.16 Feet  
Height above grade/roof to top of sign: 20.16 Feet  
Total Square Foot Area: 161.33 square feet

To be legal, such sign(s) must comply with all applicable provisions of Title 17, to the Chicago Zoning Ordinance, and all other applicable provisions of the Municipal Code for the city of Chicago governing the construction and maintenance of signs, billboards, signboards and related structures.

  
Nicholas Sposato  
Alderman, 36<sup>th</sup> Ward

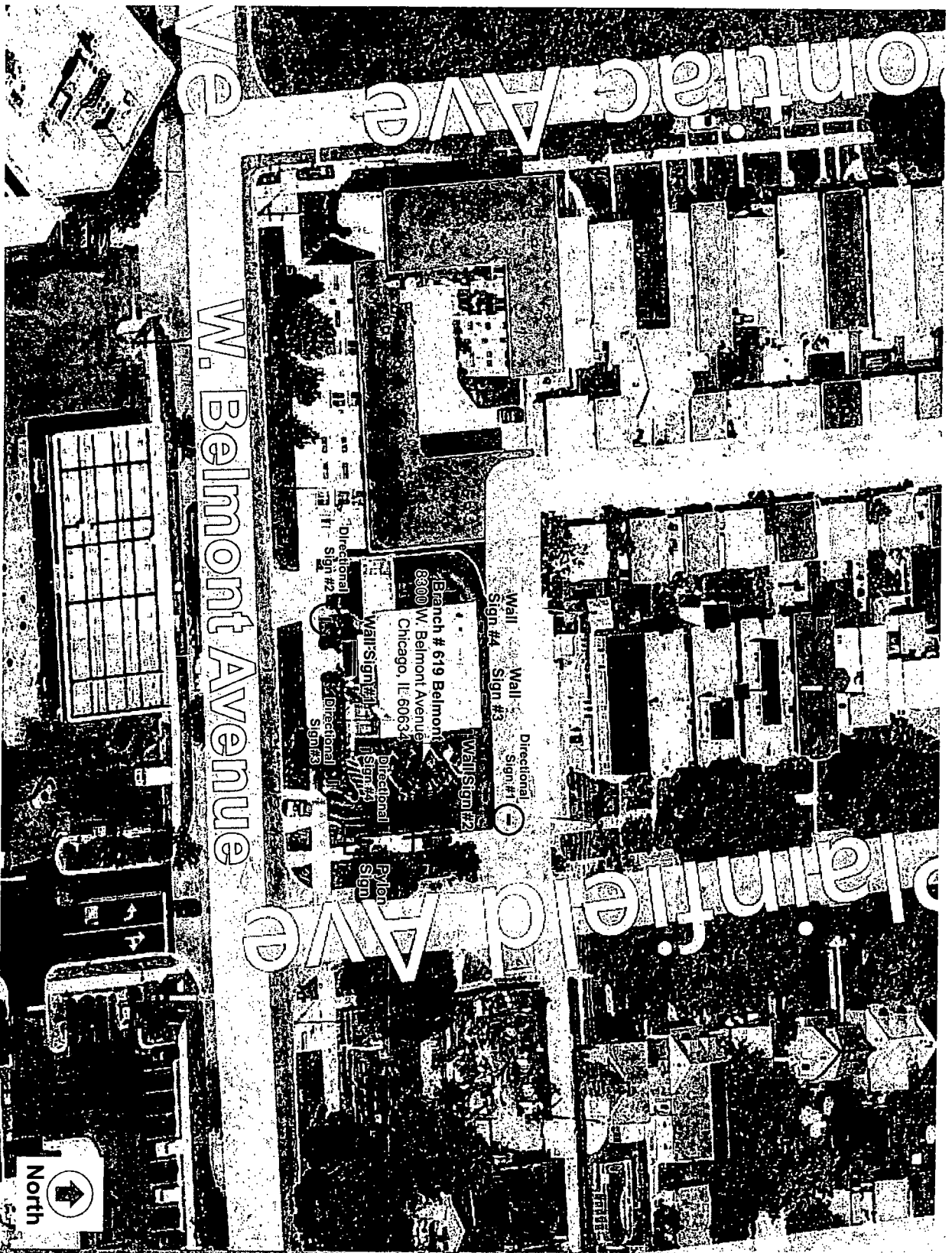
Handwritten scribbles or marks.



Branch # 619 Belmont  
8300 W. Belmont Avenue  
Chicago, IL 60634

SOUTH WATER  
SIGNS

Job #7006140  
05/19/14



Branch # 619 Belmont  
8300 W. Belmont Avenue  
Chicago, IL 60634

Sign Type: Signage  
Job Number #: 7006140  
Drawing Name: 7006140\_Mb Financial\_Chicago IL\_Belmont.cdr

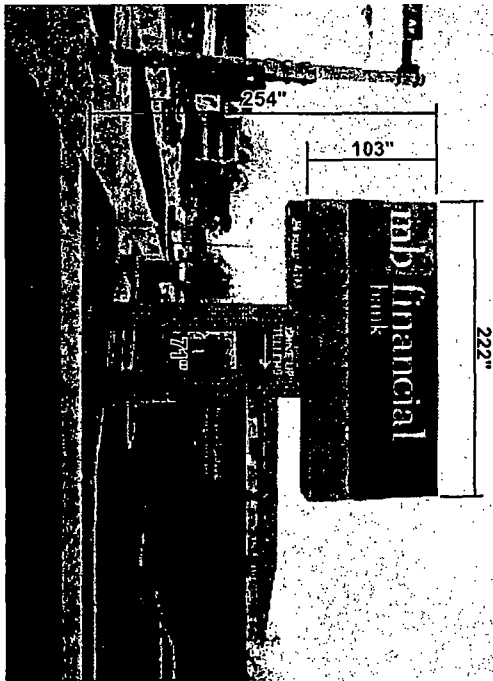
DATE/REVISIONS: 11/26/13 TVS  
03/24/14 PMF 05/19/14 PMF

# SITE PLAN

SOUTH WATER  
SIGNS

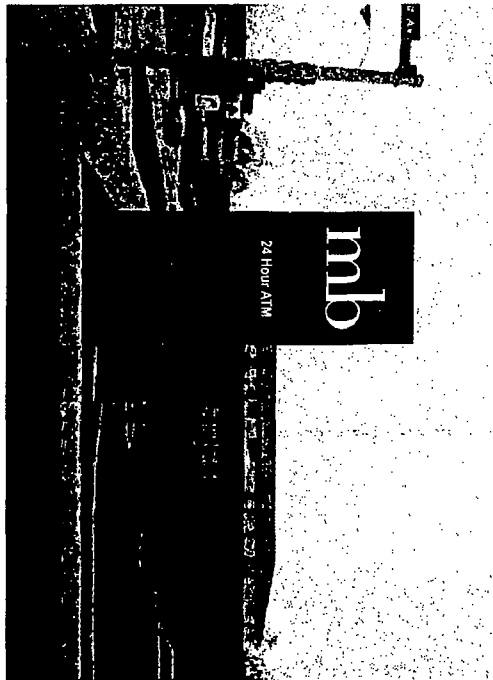


© 2004 SOUTH WATER SIGNS, LLC  
ALL RIGHTS RESERVED. SOUTH WATER SIGNS, LLC  
AND MAY NOT BE REPRODUCED IN PART OR WHOLE WITHOUT  
WRITTEN PERMISSION FROM SOUTH WATER SIGNS, LLC.

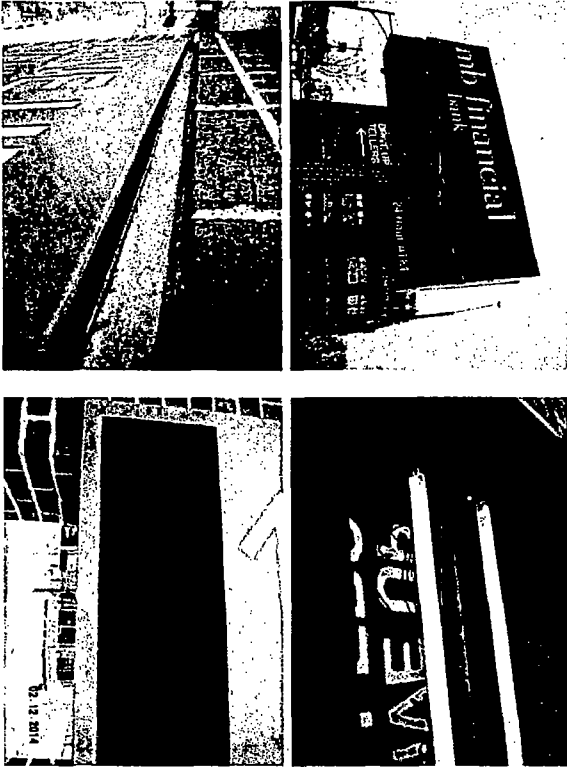


Pylon Sign (Before)

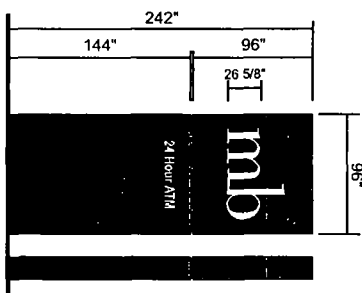
Existing Signage: Internally Illum. Pylon Sign - Approx. 17'-7" w x 20'-5" h



Pylon Sign (After)



Pylon Sign (Additional Photos)



P-96 D.F. Illuminated Pylon

Scale 1/8" = 1'-0"  
Qty. (1) Required  
Illuminated "mb" face with cladding painted black  
with white reflective vinyl applied to first surface

<b>Branch # 619 Belmont</b> 8300 W. Belmont Avenue Chicago, IL 60634	
Sign Type:	7006140
Job Number #	7006140
Drawing Name	7006140_Mb Financial Chicago IL_Belmont.cdr
NOTES	
Branch Upgrade 1.1 DATE/REVISIONS 11/26/13 TVS 03/24/14 PMF 05/19/14 PMF	
<b>EXISTING SIGN</b>	
<b>SOUTH WATER SIGNS</b> 524 N. Church Rd., Bensenville, IL 60126 	
© COPYRIGHT 2011 BY SOUTH WATER SIGNS, LLC ALL DESIGNS AT THE SOLE PROPERTY OF SOUTH WATER SIGNS, LLC WRITTEN PERMISSION FROM SOUTH WATER SIGNS, LLC	