



# City of Chicago



O2014-2792

Office of the City Clerk

## Document Tracking Sheet

<b>Meeting Date:</b>	4/2/2014
<b>Sponsor(s):</b>	Reilly (42)
<b>Type:</b>	Ordinance
<b>Title:</b>	Grant(s) of privilege in public way for Eleven Hundred LLC - sheetings
<b>Committee(s) Assignment:</b>	Committee on Transportation and Public Way

ORDINANCE  
ELEVEN HUNDRED, LLC  
Acct. No. 380698 - 1  
Permit No. 1111252

*Be It Ordained by the City Council of the City of Chicago:*

SECTION 1. Permission and authority are hereby given and granted to ELEVEN HUNDRED, LLC, upon the terms and subject to the conditions of this ordinance to construct, install, maintain and use three (3) Sheeting(s) under the public right-of-way adjacent to its premises known as 1100 N. State St..

Said Sheeting(s) at N. State Street measure(s):

One (1) at seventy-four point five (74.5) feet in length, and one point three three (1.33) foot in width for a total of ninety-nine point zero nine (99.09) square feet.

Said Sheeting(s) at W. Maple Street measure(s):

One (1) at eighty-seven point five (87.5) feet in length, and one point three three (1.33) foot in width for a total of one hundred sixteen point three eight (116.38) square feet.

Said Sheeting(s) at Public Alley measure(s):

One (1) at forty-five point five (45.5) feet in length, and one point three three (1.33) foot in width for a total of sixty point five two (60.52) square feet.

The location of said privilege shall be as shown on prints kept on file with the Department of Business Affairs and Consumer Protection and the Office of the City Clerk.

Said privilege shall be constructed in accordance with plans and specifications approved by the Department of Planning and Development and Department of Transportation (Office of Underground Coordination).

This grant of privilege in the public way shall be subject to the provisions of Section 10-28-015 and all other required provisions of the Municipal Code of Chicago.

The grantee shall pay to the City of Chicago as compensation for the privilege #1111252 herein granted the sum of one thousand two hundred (\$1,200.00) per annum in advance.

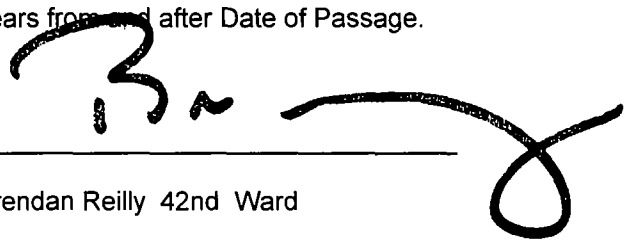
A 25% penalty will be added for payments received after due date.

The permit holder agrees to hold the City of Chicago harmless for any damage, relocation or replacement costs associated with damage, relocation or removal of private property caused by the City performing work in the public way.

Authority herein given and granted for a period of five (5) years from and after Date of Passage.

Alderman \_\_\_\_\_

Brendan Reilly 42nd Ward



# GREMLEY & BIEDERMANN

A Division of  
**PLCS Corporation**  
License No. 04-095132

PROFESSIONAL LAND SURVEYORS

4305 NORTH ELSTON AVENUE, CHICAGO, IL 60630  
TELEPHONE (773) 685-5102 FAX (773) 288-4184 EMAIL INFO@PLCS-SURVEY.COM

## Plat of Survey

BLOCK 4 (EXCEPT THE NORTH 31.00 FT. THEREOF) IN CANAL TRUSTEES  
SUBDIVISION OF THE SOUTH FRACTIONAL SECTION 3, TOWNSHIP 39 NORTH,  
RANGE 14 EAST OF THE THIRD PRINCIPAL MERIDIAN, IN COOK COUNTY, ILLINOIS.

LOTS 11 AND 12 IN SHELDON AND RUMSEY'S SUBDIVISION OF THE SOUTH 205  
FEET OF BLOCK 17 IN BUSHNELL'S ADDITION TO CHICAGO IN THE SOUTHEAST  
QUARTER OF SECTION 4, TOWNSHIP 39 NORTH, RANGE 14, EAST OF THE THIRD  
PRINCIPAL MERIDIAN, IN COOK COUNTY ILLINOIS.

PROPERTY AREA ± 0.02 SQ FT. OR 0.18 ACRES MORE OR LESS.

## LEGEND

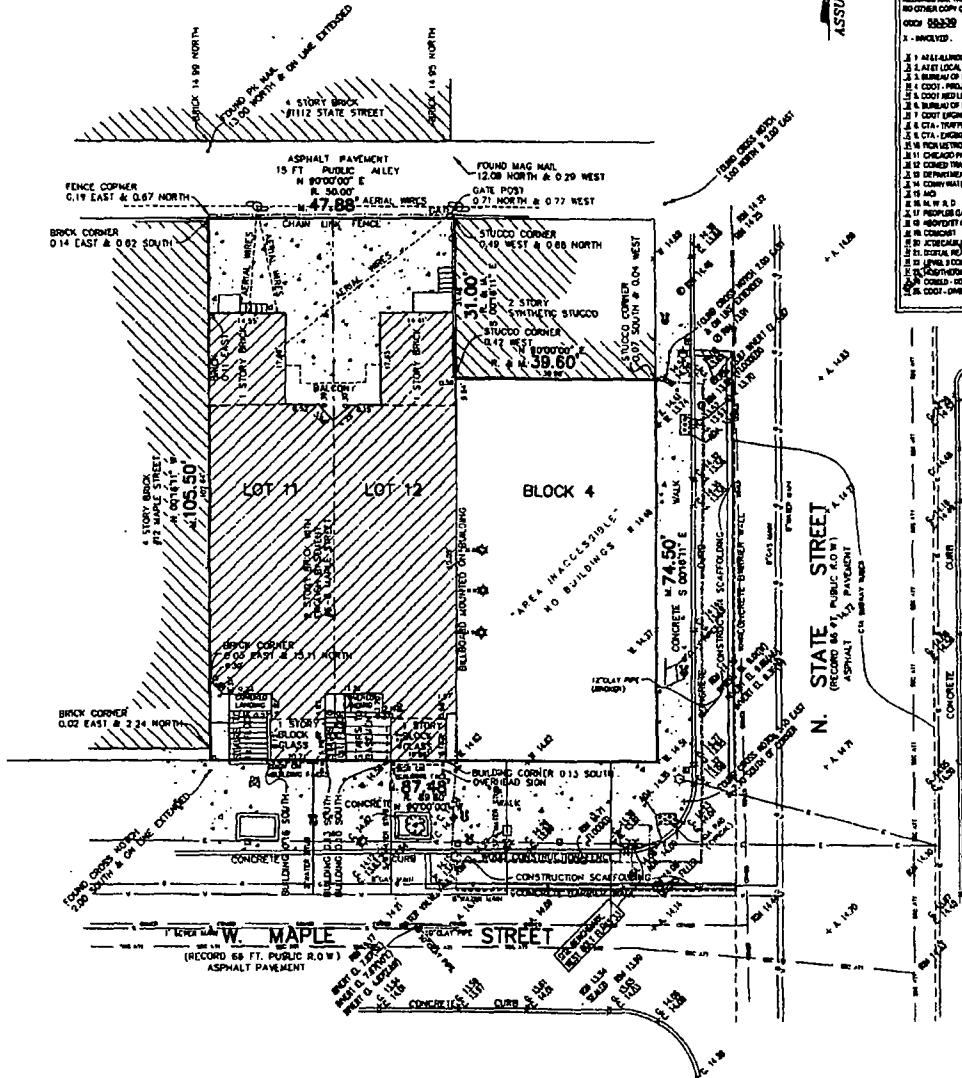
- ⊙ Storm CB
- ⊙ San Storm Combo MH
- ⊙ Water Buffalo Box
- ⊙ Water Fire Hydrant
- ⊙ Telephone MH
- ⊙ Electric MH
- ⊙ Electric Light Pole
- ⊙ Electric Light Pole with Traffic Signal
- ⊙ Electric Mounted Wall Light
- ⊙ Utility Pole
- ⊙ Gas Valve
- ⊙ Gas Buffalo Box
- ⊙ Tree - Deciduous
- ⊙ Parking Pay Box
- ⊙ Sign Post
- ⊙ Cut Cross

THE CITY OF CHICAGO BOARD OF UNDERGROUND UTILITIES HAS BEEN REQUESTED FOR YOUR SURVEY. THE NEEDS TO DATE ARE INDICATED BELOW AS A CONFORMANCE TO THE CITY OF CHICAGO REQUIREMENTS ADDED TO THIS PLAT AS IT IS RECORDED. THESE RECORDS ARE THE PROPERTY OF THE CITY OF CHICAGO AND NO OTHER COPY OF THIS INFORMATION IS RETURNED.

ORDER 000000

X - INVOLVED    N - NOT INVOLVED    BLANK - NOT RECOVERED

- 1. ALL ALTERNATIVE
- 2. ALL LOCAL NETWORK SERVICES
- 3. BUREAU OF ELECTRICITY
- 4. COOK COUNTY DEVELOPMENT
- 5. COOK COUNTY ENGINEERING
- 6. BUREAU OF FORESTRY
- 7. COOK COUNTY ENGINEERING
- 8. CTA - TRAFFIC
- 9. CTA - ENGINEERING
- 10. METRO OPTICAL NETWORKS - CHICAGO
- 11. CHICAGO PARK DISTRICT
- 12. COOK TRANSPORTATION
- 13. DEPARTMENT OF WATER MANAGEMENT - SEWER SECTION
- 14. COOK COUNTY WATER CONTROL DISTRICT
- 15. IAD
- 16. ILL. M. W. D.
- 17. PEOPLE'S GAS
- 18. TELECOMUNICATIONS
- 19. COOK COUNTY
- 20. TELECOMUNICATIONS
- 21. ILLINOIS POLICE TRAINING ACADEMY TECHNOLOGY CENTER
- 22. ILLINOIS COMMUNICATIONS LAW
- 23. ILLINOIS TELECOMUNICATIONS CORPORATION
- 24. COOK COUNTY ENGINEERING
- 25. COOK COUNTY ENGINEERING
- 26. COOK COUNTY ENGINEERING



RECORDED DECEMBER 10, 2013  
PER ORDER #2013-18721 (PL)  
ELEVATION ADDED AUGUST 15, 2013  
PER ORDER #2013-18218 (PL)  
BOARD OF UNDERGROUND ADDED AUGUST 13, 2013  
PER ORDER #2013-18196 (PL)

GREMLEY & BIEDERMANN  
2013-17849-001

**SURVEY NOTES:**

ELEVATIONS SHOWN HEREON ARE AS OF JANUARY 7, 2013

PREMISES COVERED WITH ICE AND SNOW AND MAY OBSCURE ADDITIONAL IMPROVEMENTS.

Note R, S & K, describe Record and Mismatch Outlines respectively.

Distances are marked in feet and decimal parts thereof. Corners of points BELONG building by corner and in case repeat any distances BEFORE change in size.

For monuments, building lines and other markers not shown on survey plat refer to your abstract, deed, contract, life policy and local building regulations.

NO dimensions shall be assumed by scale measurement upon this plat.

Unless otherwise noted herein the Bearing, Elevation Datum and Coordinate Datum if used is ASSUMED.

COPYRIGHT GREMLEY & BIEDERMANN, INC. 2013 "All Rights Reserved"

State of Illinois  
County of Cook

We, GREMLEY & BIEDERMANN, INC. hereby certify that we have surveyed the above described property and that the plat hereon drawn is a correct representation of said survey corrected to a temperature of 62° Fahrenheit.

Field measurements completed on December 10, 2013.

Signed on Dec 11, 2013

By Rita G. Biedermann

Professional Illinois Land Surveyor No. 2302  
My license expires November 30, 2014.

This professional advice conforms to the current Illinois maximum standards for a boundary survey.

