



# City of Chicago



O2017-131

Office of the City Clerk

## Document Tracking Sheet

<b>Meeting Date:</b>	1/25/2017
<b>Sponsor(s):</b>	Misc. Transmittal
<b>Type:</b>	Ordinance
<b>Title:</b>	Zoning Reclassification Map No. 15-G at 1101-1117 W Granville Ave - App No. 19081T1
<b>Committee(s) Assignment:</b>	Committee on Zoning, Landmarks and Building Standards

#1908171  
INTRO DATE  
01-25-17

ORDINANCE

BE IT ORDAINED BY THE CITY COUNCIL OF THE CITY OF CHICAGO:

SECTION 1. Title 17 of the Municipal Code of Chicago, the Chicago Zoning Ordinance, is hereby amended by changing all of the B1-3 Neighborhood Shopping District symbols and indications as shown on Map No. 15-G in an area bound by

The alley next West of and parallel to North Winthrop Avenue, West Granville Avenue, North Winthrop Avenue, a line 57.70 feet South of and parallel to West Granville Avenue.

to those of a B3-5 Community Shopping District.

SECTION 2. This ordinance takes effect after its passage and due publication.

Common Address of Property: 1101-17 W Granville, Chicago, IL 60660.

**NARRATIVE**

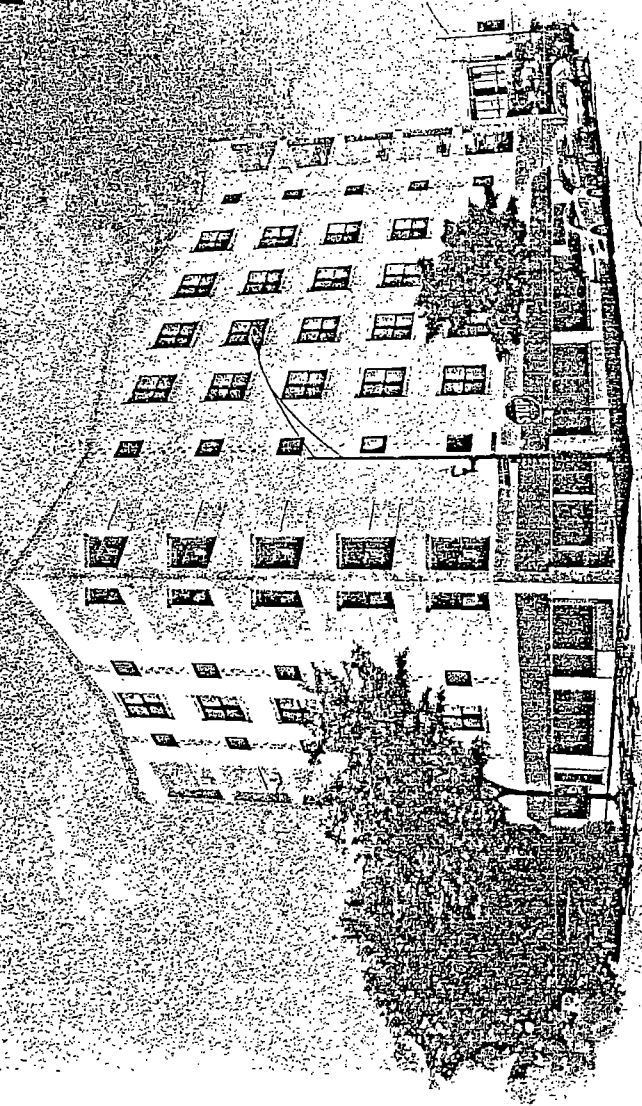
**1101-17 W Granville Avenue B1-3 to B3-5**

The applicant seeks to build a 6 story 20 residential dwelling unit with 1 commercial space on the ground floor and 5 outdoor parking spaces with a building height of 70 feet.

FAR	5.0
Lot Area	5,776 square feet
Building Area	28,880 square feet
Building Height	70 feet
Side (south) Setback	5 feet
Side (north) Setback	0
West (rear) Setback	0
East (front) Setback	0
Parking	5 spaces

**FINAL FOR PUBLICATION**

FINAL FOR PUBLICATION

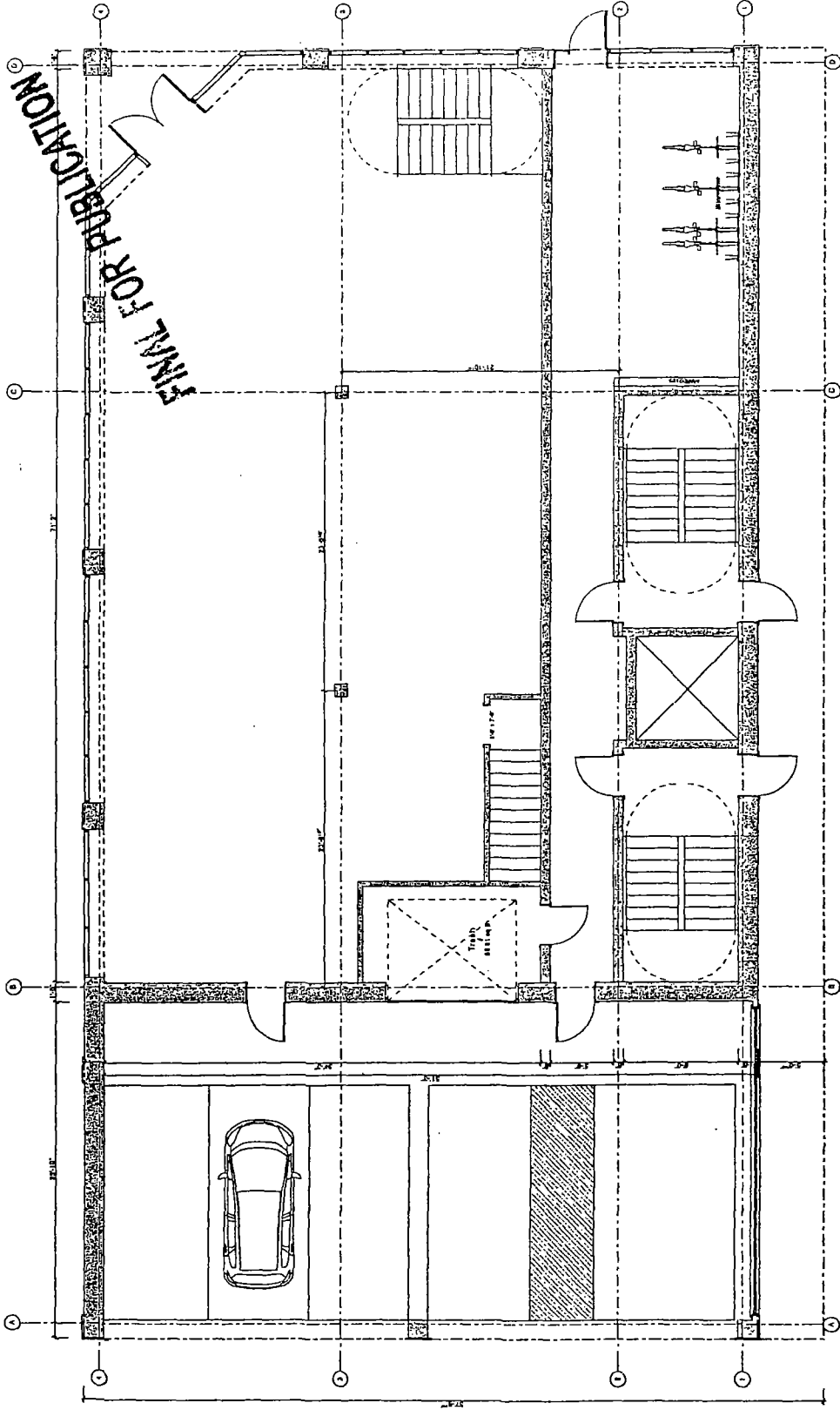


100%

100% SCHEDULE

MDT





1st Floor  
SCALE: 1/8" = 1'-0"

SD03



MDI  
10175 CHERRY AV  
SD03



4618 N Broadway  
Chicago, IL 60640  
773.561.1987  
www.mdtarch.com

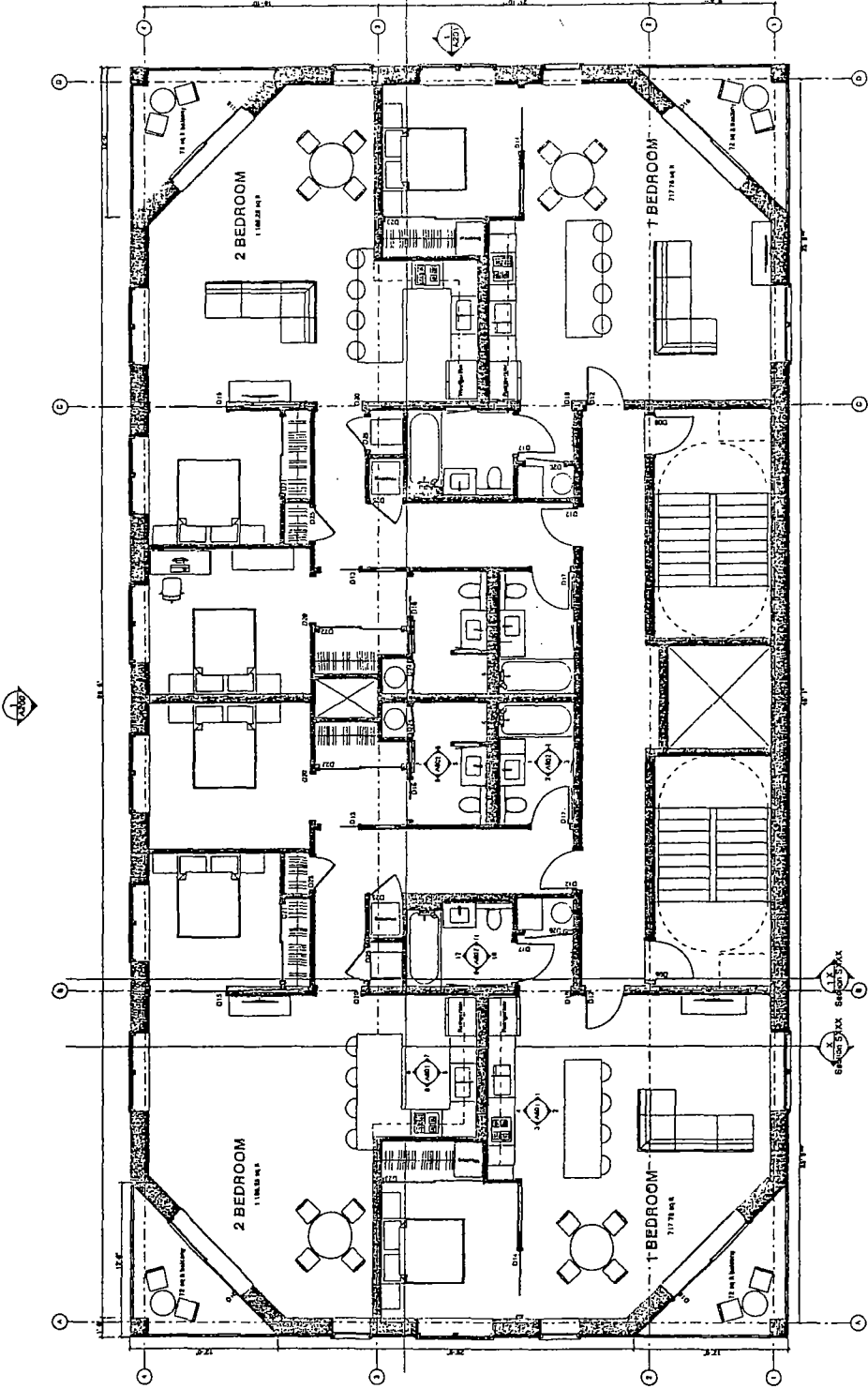
FINAL FOR PUBLICATION

Typical Floor Plan

1101 W Granville Ave

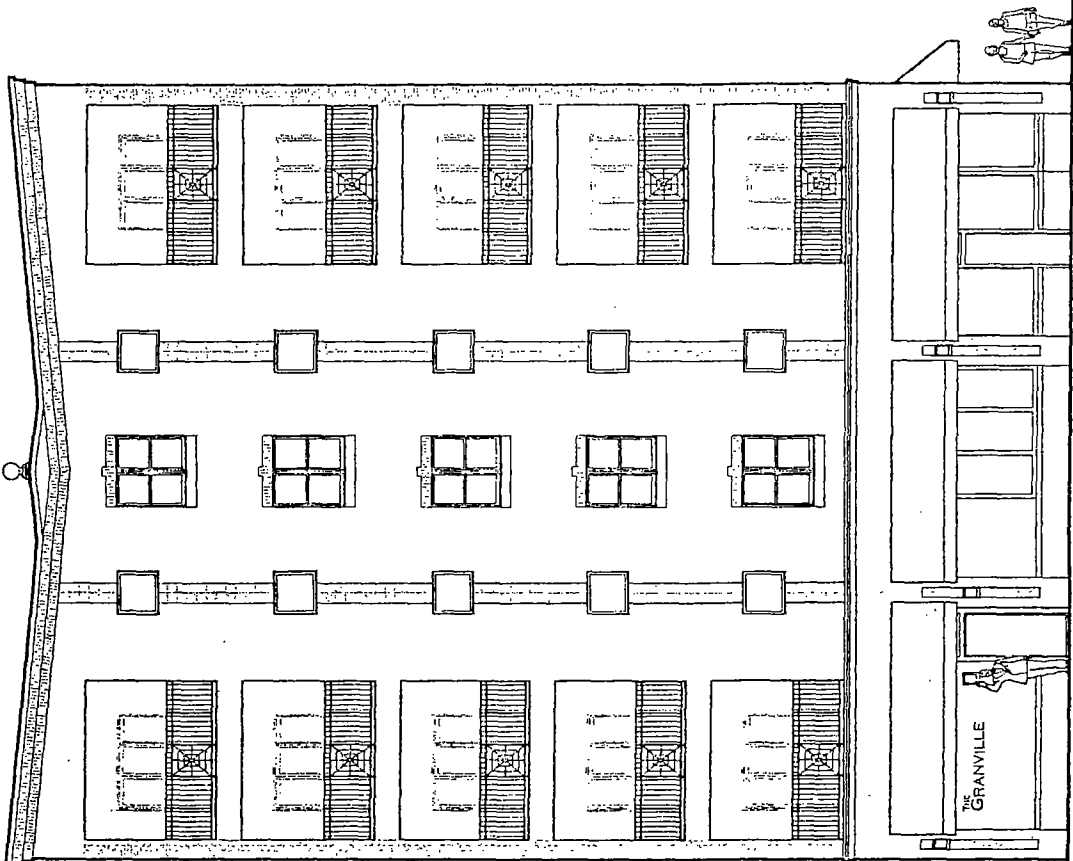
1101 W Granville Ave Chicago IL 60660

A102



Floors 2 - 6  
SCALE: 1/8" = 1'-0"

FINAL FOR PUBLICATION



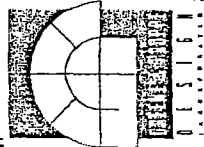
PROPOSED EAST ELEVATION

SCALE: 1/8" = 1'-0"

1101 W GRANVILLE AVE, CHICAGO, IL

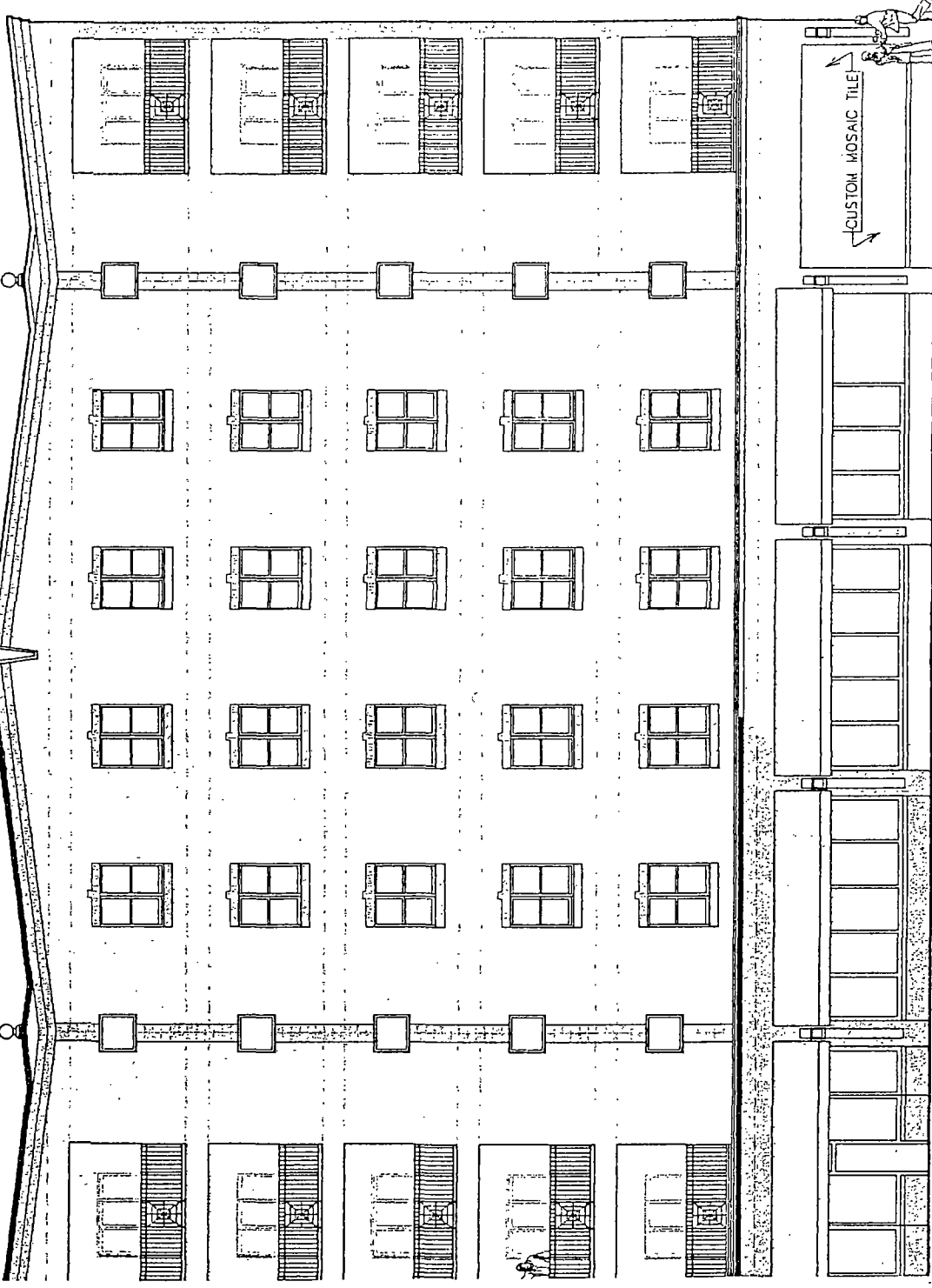
6 OCT 2016 12 OCT 2016 24 OCT 2016 26 OCT 2016 2 NOV 2016 7 NOV 2016

1209 WEST BERWYN ■ CHICAGO, ILLINOIS ■ 60640 ARCHITECTURE ■ INTERIOR DESIGN ■ URBAN DESIGN 773.271.1925 phone ■ 773.271.1936 fax





FINAL FOR PUBLICATION



ROPOSED NORTH ELEVATION

1101 W. GRANVILLE AVE., CHICAGO IL

LE 1/8" = 1'-0"

2 NOV 2016 7 NOV 2016

3 OCT 2016 6 OCT 2016

12 OCT 2016 24 OCT 2016

26 OCT 2016

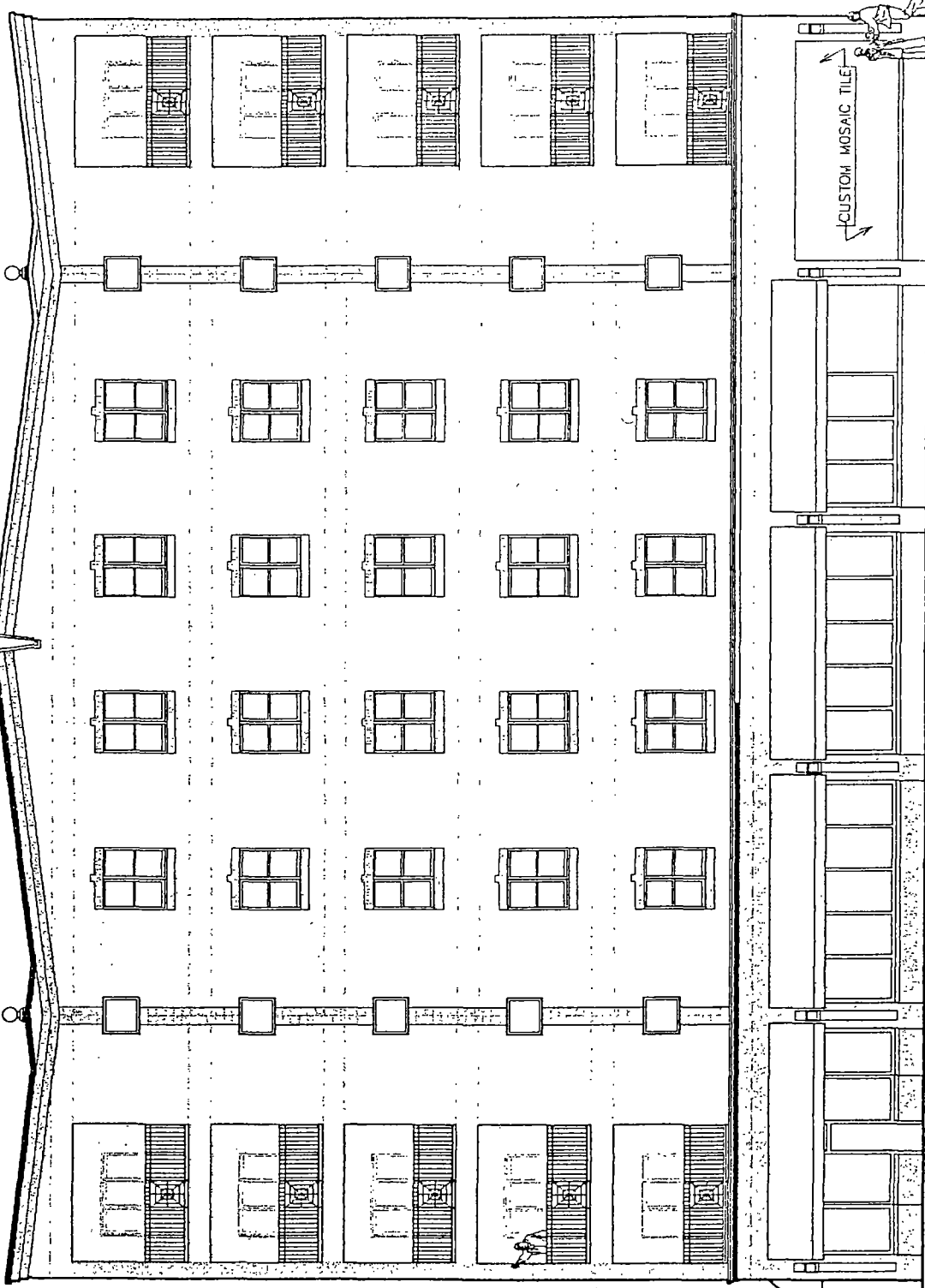
JERWYN ■ CHICAGO, ILLINOIS ■ 60640

ARCHITECTURE ■ INTERIOR DESIGN ■ URBAN DESIGN

773.271.1925 phone ■ 773.271.1936 fax

5090 10/2016

FINAL FOR PUBLICATION



CUSTOM MOSAIC TILE

# PROPOSED NORTH ELEVATION

SCALE: 1/8" = 1'-0"

1101 W. GRANVILLE AVE., CHICAGO IL

2 NOV 2016 7 NOV 2016

3 OCT 2016 6 OCT 2016

12 OCT 2016 24 OCT 2016 26 OCT 2016

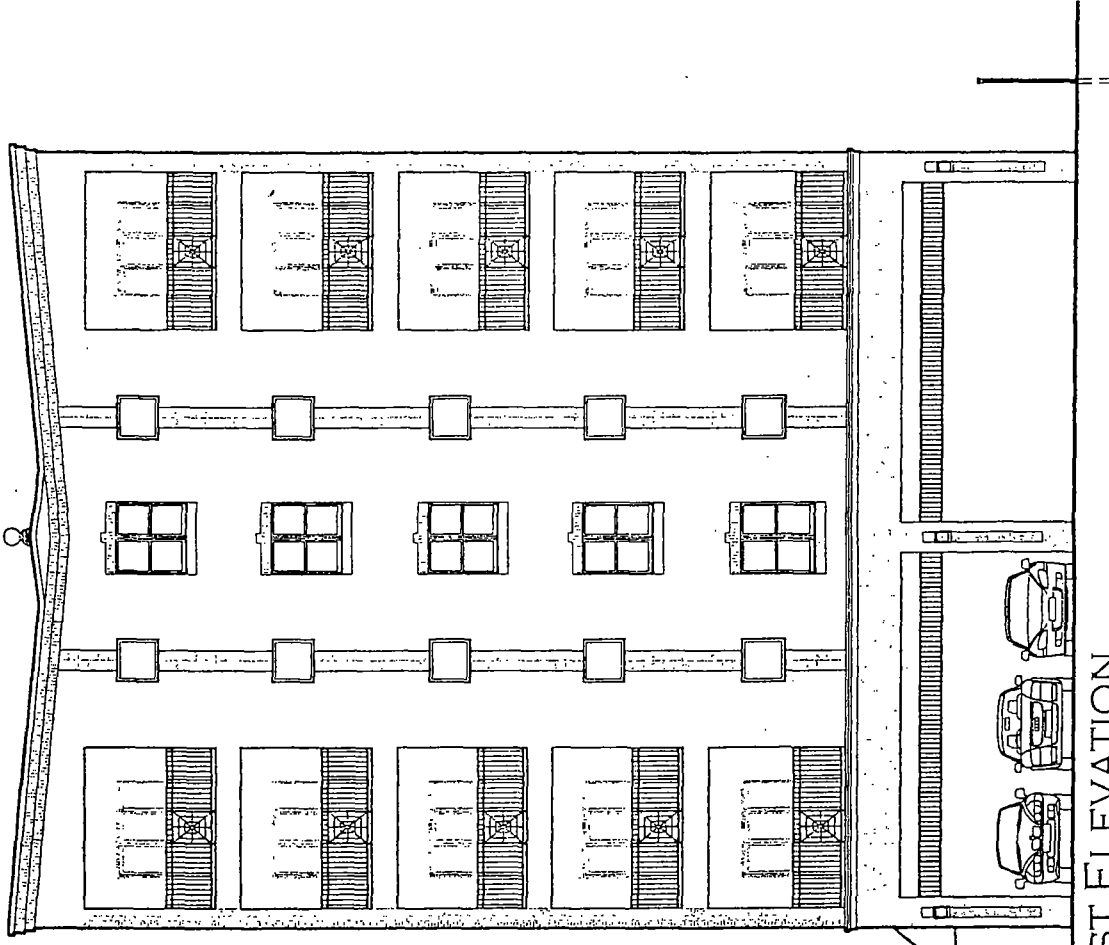
© 2014 JLB

1209 WEST BERWYN ■ CHICAGO, ILLINOIS ■ 60640

ARCHITECTURE ■ INTERIOR DESIGN ■ URBAN DESIGN

773.271.1925 phone ■ 773.271.1936 fax

FINAL FOR PUBLICATION



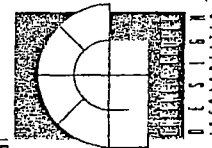
# PROPOSED WEST ELEVATION

SCALE: 1/8" = 1'-0"

1101 W. GRANVILLE AVE, CHICAGO IL

4 NOV 2016 7 NOV 2016

© GPD, Inc. 2015



1209 WEST BERWYN ■ CHICAGO, ILLINOIS ■ 60640

ARCHITECTURE ■ INTERIOR DESIGN ■ URBAN DESIGN

773 271.1925 phone ■ 773 271 1936 fax