



# Office of the City Clerk



O2013-336

Office of the City Clerk

## City Council Document Tracking Sheet

<b>Meeting Date:</b>	1/17/2013
<b>Sponsor(s):</b>	Reilly, Brendan (42)
<b>Type:</b>	Ordinance
<b>Title:</b>	Grant(s) of privilege in public way for Gino's East Pizzeria - light fixtures
<b>Committee(s) Assignment:</b>	Committee on Transportation and Public Way

ORDINANCE  
GINO'S EAST PIZZERIA  
Acct. No. 303796 - 1  
Permit No. 1104059

*Be It Ordained by the City Council of the City of Chicago:*

SECTION 1. Permission and authority are hereby given and granted to GINO'S EAST PIZZERIA, upon the terms and subject to the conditions of this ordinance to maintain and use, as now constructed, twenty-six (26) Light Fixture(s) projecting over the public right-of-way adjacent to its premises known as 162 E. Superior St..

Said Light Fixture(s) at E. Superior measure(s):

Eight (8) at one point seven (1.7) foot in length, two point five (2.5) feet in width and fifteen (15) feet above grade level.

Said Light Fixture(s) at E. Superior measure(s):

Six (6) at point seven (.7) feet in length, two point five (2.5) feet in width and fifteen (15) feet above grade level.

Said Light Fixture(s) at E. Superior measure(s):

Eight (8) at two (2) feet in length, one (1) foot in width and seven point five (7.5) feet above grade level.

Said Light Fixture(s) at E. Superior measure(s):

Four (4) at one point two (1.2) foot in length, point seven (.7) feet in width and twenty-five (25) feet above grade level.

The location of said privilege shall be as shown on prints kept on file with the Department of Business Affairs and Consumer Protection and the Office of the City Clerk.

Said privilege shall be constructed in accordance with plans and specifications approved by the Department of Transportation (Division of Project Development).


This grant of privilege in the public way shall be subject to the provisions of Section 10-28-015 and all other required provisions of the Municipal Code of Chicago.

The grantee shall pay to the City of Chicago as compensation for the privilege #1104059 herein granted the sum of one hundred seventy-five (\$175.00) per annum in advance.

A 25% penalty will be added for payments received after due date.

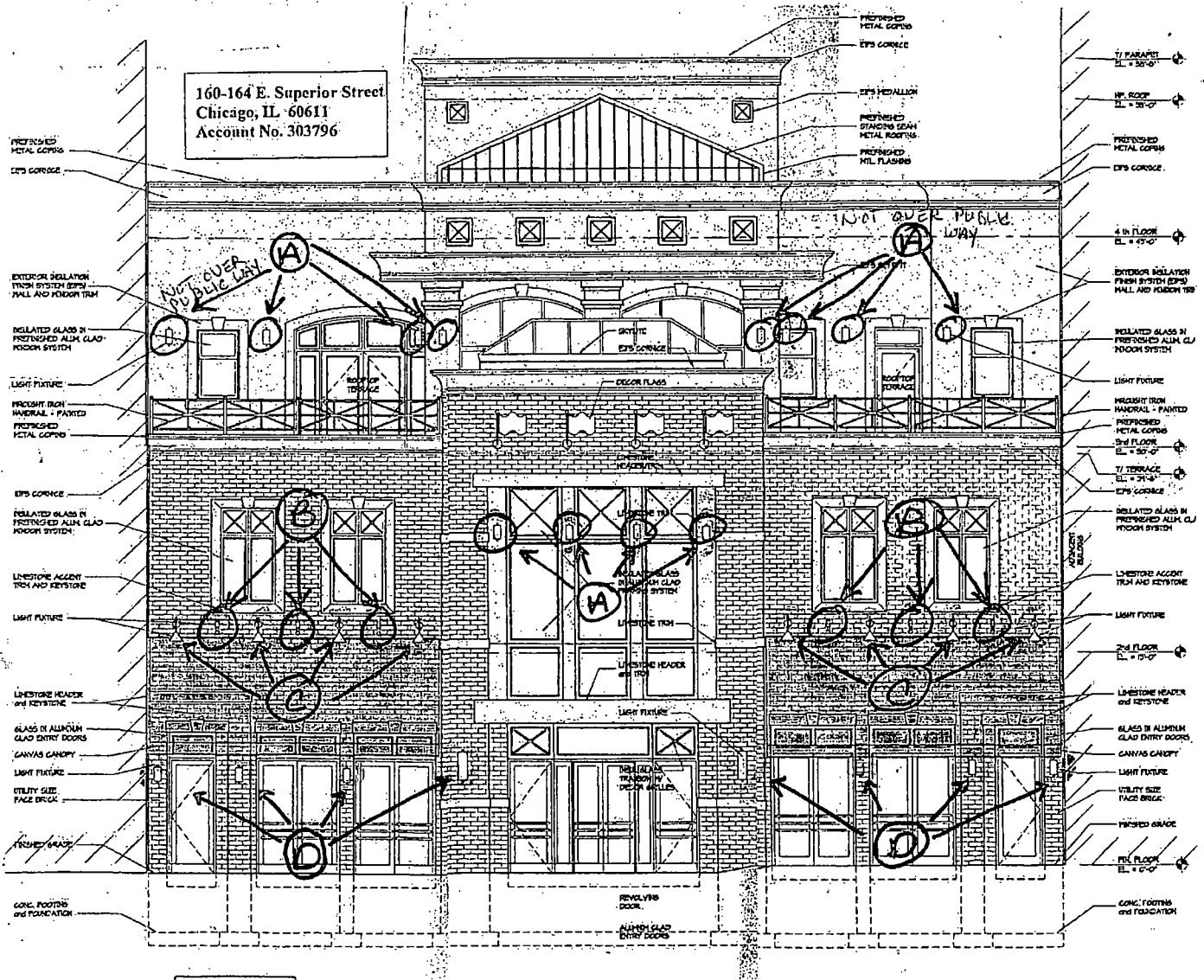
The permit holder agrees to hold the City of Chicago harmless for any damage, relocation or replacement costs associated with damage, relocation or removal of private property caused by the City performing work in the public way.

Authority herein given and granted for a period of five (5) years from and after 09/05/2012.

Alderman 

Brendan Reilly 42nd Ward

160-164 E. Superior Street  
Chicago, IL 60611  
Account No. 303796



PREPARED METAL COPING  
EPS CORNICE  
EXTERIOR INSULATION TRIM SYSTEM (EPS) WALL AND FLOOR TRIM  
INSULATED GLASS IN PREPARED ALUM GLAZ INDOOR SYSTEM  
LIGHT FIXTURE  
PULCHIT IRON HANDRAIL - PAINTED  
PREPARED METAL COPING  
EPS CORNICE  
INSULATED GLASS IN PREPARED ALUM GLAZ INDOOR SYSTEM  
Limestone ACCENT TRIM AND KEystone  
LIGHT FIXTURE  
Limestone HEADER and KEystone  
GLASS IN ALUMINUM GLAZ ENTRY DOORS  
CANVAS CANOPY  
LIGHT FIXTURE  
UTILITY SIZE FACE BRICK  
PREPARED GLAZING  
CONC. FOOTING and FOUNDATION

PREPARED METAL COPING  
EPS CORNICE  
EPS HEADLICH  
PREPARED STAINING GRAY METAL ROOFING  
PREPARED HTL FLASHING  
7/8 TERRACE EL. = 45'-0"  
1st. FLOOR EL. = 30'-0"  
PREPARED METAL COPING  
EPS CORNICE  
4th FLOOR EL. = 45'-0"  
EXTERIOR INSULATION TRIM SYSTEM (EPS) WALL AND FLOOR TRIM  
INSULATED GLASS IN PREPARED ALUM GLAZ INDOOR SYSTEM  
LIGHT FIXTURE  
PULCHIT IRON HANDRAIL - PAINTED  
PREPARED METAL COPING 2ND FLOOR EL. = 52'-0"  
7/8 TERRACE EL. = 45'-0"  
EPS CORNICE  
INSULATED GLASS IN PREPARED ALUM GLAZ INDOOR SYSTEM  
Limestone ACCENT TRIM AND KEystone  
LIGHT FIXTURE  
2ND FLOOR EL. = 52'-0"  
Limestone HEADER and KEystone  
GLASS IN ALUMINUM GLAZ ENTRY DOORS  
CANVAS CANOPY  
LIGHT FIXTURE  
UTILITY SIZE FACE BRICK  
PREPARED GLAZING  
1st. FLOOR EL. = 30'-0"  
CONC. FOOTING and FOUNDATION

