



Office of the Chicago City
Clerk



O2011-9303

Office of the City Clerk

City Council Document Tracking Sheet

Meeting Date:	11/2/2011
Sponsor(s):	Reilly, Brendan (42)
Type:	Ordinance
Title:	Grant(s) of Privilege in Public Way for Panera Bread
Committee(s) Assignment:	Committee on Transportation and Public Way

ORDINANCE
Panera Bread
Acct. No. 207283 - 12
Permit No. 1098106

Be It Ordained by the City Council of the City of Chicago:

SECTION 1. Permission and authority are hereby given and granted to Panera Bread, upon the terms and subject to the conditions of this ordinance to maintain and use four (4) sign(s) projecting over the public right-of-way attached to its premises known as 2 N. Michigan Ave..

Said sign structure(s) measures as follows; along N. Michigan:

One (1) at sixteen point four one (16.41) feet in length, one point nine six (1.96) feet in height and twelve point five (12.5) feet above grade level.

One (1) at eight point six three (8.63) feet in length, six point seven five (6.75) feet in height and eight point one three (8.13) feet above grade level.

Said sign structure(s) measures as follows; along E Madison St:

One (1) at three point four one (3.41) feet in length, three (3) feet in height and twelve (12) feet above grade level.

One (1) at sixteen point four one (16.41) feet in length, one point nine six (1.96) feet in height and twelve point five (12.5) feet above grade level.

The location of said privilege shall be as shown on prints kept on file with the Department of Business Affairs and Consumer Protection and the Office of the City Clerk.

Said privilege shall be constructed in accordance with plans and specifications approved by the Department of Transportation (Division of Project Development) and Zoning Department - Signs.

This grant of privilege in the public way shall be subject to the provisions of Section 10-28-015 and all other required provisions of the Municipal Code of Chicago.

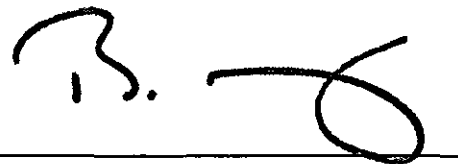
The grantee shall pay to the City of Chicago as compensation for the privilege #1098106 herein granted the sum of one thousand (\$1,000.00) per annum in advance.

A 25% penalty will be added for payments received after due date.

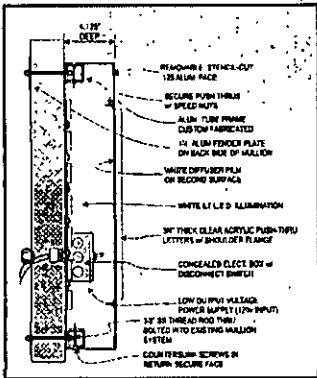
The permit holder agrees to hold the City of Chicago harmless for any damage, relocation or replacement costs associated with damage, relocation or removal of private property caused by the City performing work in the public way.

Authority herein given and granted for a period of five (5) years from and after Date of Passage.

Alderman _____



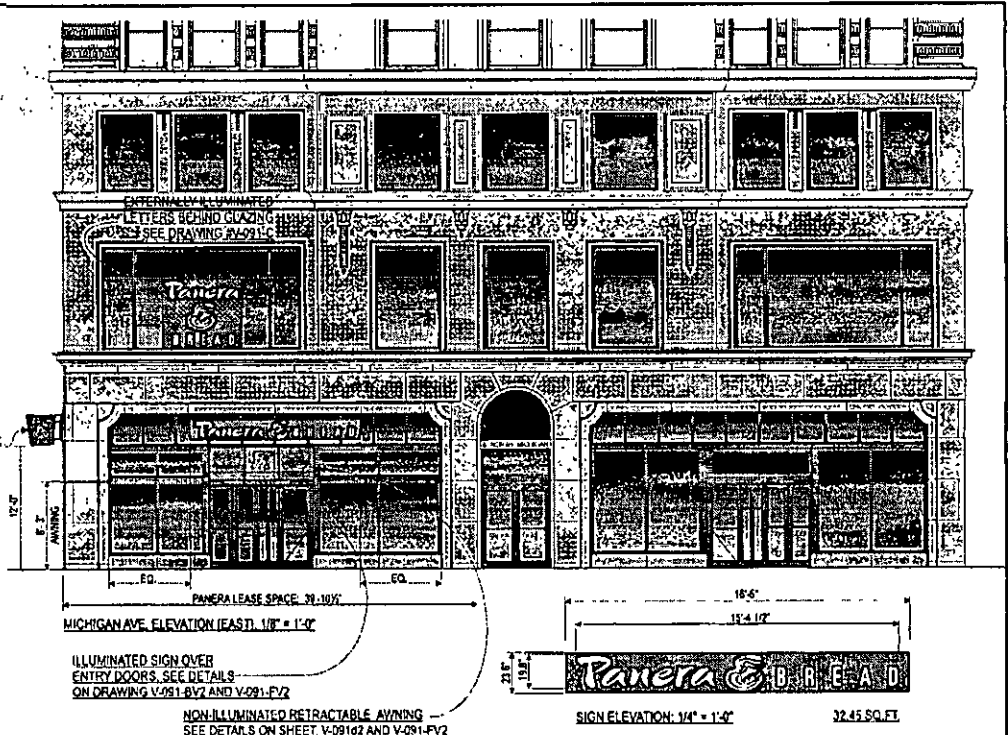
Brendan Reilly 42nd Ward



ILLUMINATED BLADE SIGN
SEE DETAILS ON V-091E

INTERNALLY ILLUMINATED CABINETS WITH
STENCIL CUT PUSH THRU COPY:

- "PANERA" AND "BREAD" LETTERS
- (BLACK) 3/4" THICK CLEAR PLEXIGLAS WITH WHITE BACKER AND FIRST SURFACE BLACK VINYL OVERLAY MOTHER BREAD LOGO
- (PMS 1385U) 3/4" CLEAR PLEXIGLAS WITH PMS 1385U SECOND SURFACE VINYL BACKER WITH BLACK FIRST SURFACE GRAPHICS
- 4 1/8" DEEP ALUM. BACKGROUND PANEL PAINTED PMS 6757U
- INTERNALLY ILLUMINATED WITH ILL LED LIGHTING
- SELF CONTAINED POWER SUPPLIES
- WHITE REGISTERED TRADE MARK REQUIRED



ILLUMINATED SIGN OVER
ENTRY DOORS. SEE DETAILS
ON DRAWING V-091-BV2 AND V-091-FV2

NON-ILLUMINATED RETRACTABLE AWNING
SEE DETAILS ON SHEET V-091-02 AND V-091-FV2

SIGN ELEVATION: 1/4" x 1'-0" 32.45 SQ. FT.

MANDYVILLE SIGN
979 OLNEY BLVD. SUITE 100 LINCOLN, NE 68504-1000
TEL: 402-441-7799 FAX: 402-441-7799
WWW.MANDYVILLESIGN.COM

APPROVALS	
DATE	BY

REVISIONS		
NO.	DATE	DESCRIPTION
1	03-03-11	Initial design
2	03-03-11	Revised sign size and placement, updated material change
3	07-26-11	Updated material change and notes
4	07-26-11	Update material change to allow sign to be made with internal illumination
5	07-26-11	Clarified sign mounting details for storefront sign and material the size of the white sign
6	08-26-11	Update material change and updated sign size and placement
7	08-26-11	Complete storefront sign over entry window sign

Panera BREAD
#1539
6 North Michigan Avenue
CHICAGO, IL

21525 1		
NOTED	WD	03-28-11
V-091av2		