



City of Chicago



SO2019-8481

Office of the City Clerk

Document Tracking Sheet

Meeting Date:	11/13/2019
Sponsor(s):	Misc. Transmittal
Type:	Ordinance
Title:	Zoning Reclassification Map No. 7-G at 1514-1518 W Diversey Pkwy - App No. 20248T1
Committee(s) Assignment:	Committee on Zoning, Landmarks and Building Standards

ORDINANCE

BE IT ORDAINED BY THE CITY COUNCIL OF THE CITY OF CHICAGO:

SECTION 1. Title 17 of the Municipal Code of Chicago, the Chicago Zoning Ordinance, is hereby amended by changing all of the RT-3.5, Residential Two-Flat, Townhouse and Multi-Unit District symbols and indications as shown on Map No. 7-G in an area bound by

The public alley next north of and parallel to West Diversey Parkway; a line 150 feet west of and parallel to North Greenview Avenue; West Diversey Parkway; And a line 200 feet west of and parallel to North Greenview Avenue

to those of a RT-4, Residential Two-Flat, Townhouse and Multi-Unit District.

SECTION 2. This ordinance takes effect after its passage and due publication.

Common Address of Property: 1514-18 West Diversey Parkway

AMNDED TO BE A Type-1 Zoning Map Amendment: NARRATIVE & PLANS**1514-18 West Diversey Avenue – RT-3.5 to RT-4**

The applicant wishes to rezone the property in order to construct two proposed 3-story, 3 residential dwelling unit buildings. Both buildings will have a detached 3-car garage at the rear of the property. Both buildings will be 3.0' off their respective east side lot lines and 2.0' off their respective west side lot lines.

BUILDING 1

FAR	1.19
Lot Area	3,125 Square Feet
Building Area	3,718 Square Feet
Lot Area Per Unit	1,041 Square Feet
Building Height	38 Feet 0 Inches
Front Setback	15 Feet 0 Inches
Rear Setback	37 Feet 6 Inches
East side Setback	3 Feet 0 Inches
West side Setback	2 Feet 0 Inches
Parking	3 Parking Stalls

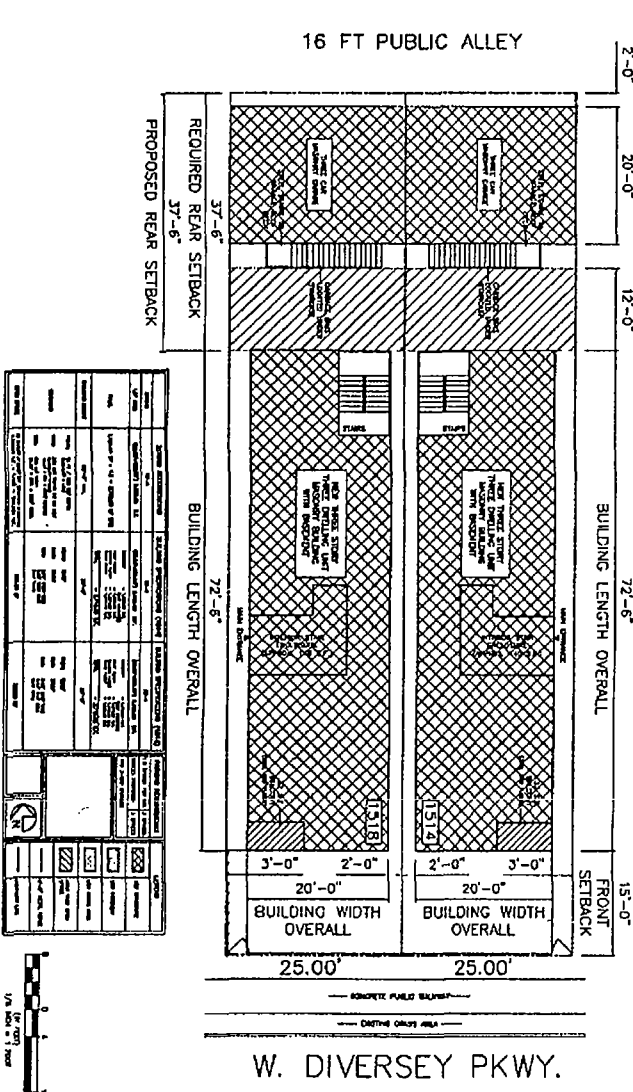
BUILDING 2

FAR	1.19
Lot Area	3,125 Square Feet
Building Area	3,718 Square Feet
Lot Area Per Unit	1,041 Square Feet
Building Height	38 Feet 0 Inches
Front Setback	15 Feet 0 Inches
Rear Setback	37 Feet 6 Inches
East side Setback	3 Feet 0 Inches
West side Setback	2 Feet 0 Inches
Parking	3 Parking Stalls

TWO - THREE STORY - THREE DWELLING UNIT MASONRY BUILDINGS WITH BASEMENT AND TWO - THREE CAR MASONRY GARAGES WITH ROOF DECK

CODE MATRIX

NO.	DESCRIPTION	AREA (SQ. FT.)	UNIT PRICE	TOTAL
1	Excavation
2	Foundation
3	Structural Steel
4	Formwork
5	Reinforcing Concrete
6	Concrete Slab
7	Concrete Wall
8	Concrete Column
9	Concrete Beam
10	Concrete Deck
11	Concrete Stair
12	Concrete Foundation
13	Concrete Retaining Wall
14	Concrete Footing
15	Concrete Pier
16	Concrete Wall
17	Concrete Column
18	Concrete Beam
19	Concrete Slab
20	Concrete Deck
21	Concrete Stair
22	Concrete Foundation
23	Concrete Retaining Wall
24	Concrete Footing
25	Concrete Pier
26	Concrete Wall
27	Concrete Column
28	Concrete Beam
29	Concrete Slab
30	Concrete Deck
31	Concrete Stair
32	Concrete Foundation
33	Concrete Retaining Wall
34	Concrete Footing
35	Concrete Pier
36	Concrete Wall
37	Concrete Column
38	Concrete Beam
39	Concrete Slab
40	Concrete Deck
41	Concrete Stair
42	Concrete Foundation
43	Concrete Retaining Wall
44	Concrete Footing
45	Concrete Pier
46	Concrete Wall
47	Concrete Column
48	Concrete Beam
49	Concrete Slab
50	Concrete Deck
51	Concrete Stair
52	Concrete Foundation
53	Concrete Retaining Wall
54	Concrete Footing
55	Concrete Pier
56	Concrete Wall
57	Concrete Column
58	Concrete Beam
59	Concrete Slab
60	Concrete Deck
61	Concrete Stair
62	Concrete Foundation
63	Concrete Retaining Wall
64	Concrete Footing
65	Concrete Pier
66	Concrete Wall
67	Concrete Column
68	Concrete Beam
69	Concrete Slab
70	Concrete Deck
71	Concrete Stair
72	Concrete Foundation
73	Concrete Retaining Wall
74	Concrete Footing
75	Concrete Pier
76	Concrete Wall
77	Concrete Column
78	Concrete Beam
79	Concrete Slab
80	Concrete Deck
81	Concrete Stair
82	Concrete Foundation
83	Concrete Retaining Wall
84	Concrete Footing
85	Concrete Pier
86	Concrete Wall
87	Concrete Column
88	Concrete Beam
89	Concrete Slab
90	Concrete Deck
91	Concrete Stair
92	Concrete Foundation
93	Concrete Retaining Wall
94	Concrete Footing
95	Concrete Pier
96	Concrete Wall
97	Concrete Column
98	Concrete Beam
99	Concrete Slab
100	Concrete Deck
101	Concrete Stair



THIS PLAN IS SUBMITTED FOR THE RECORD AND DOES NOT CONSTITUTE AN OFFER OF ANY CONTRACT DOCUMENTS. THE CONTRACT DOCUMENTS SHALL BE PREPARED BY THE ARCHITECT AND THE CONTRACT DOCUMENTS SHALL BE SUBJECT TO THE TERMS AND CONDITIONS OF THE ARCHITECT'S STANDARD CONTRACT DOCUMENTS. THE ARCHITECT'S STANDARD CONTRACT DOCUMENTS SHALL BE SUBJECT TO THE TERMS AND CONDITIONS OF THE ARCHITECT'S STANDARD CONTRACT DOCUMENTS. THE ARCHITECT'S STANDARD CONTRACT DOCUMENTS SHALL BE SUBJECT TO THE TERMS AND CONDITIONS OF THE ARCHITECT'S STANDARD CONTRACT DOCUMENTS. THE ARCHITECT'S STANDARD CONTRACT DOCUMENTS SHALL BE SUBJECT TO THE TERMS AND CONDITIONS OF THE ARCHITECT'S STANDARD CONTRACT DOCUMENTS.

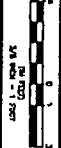
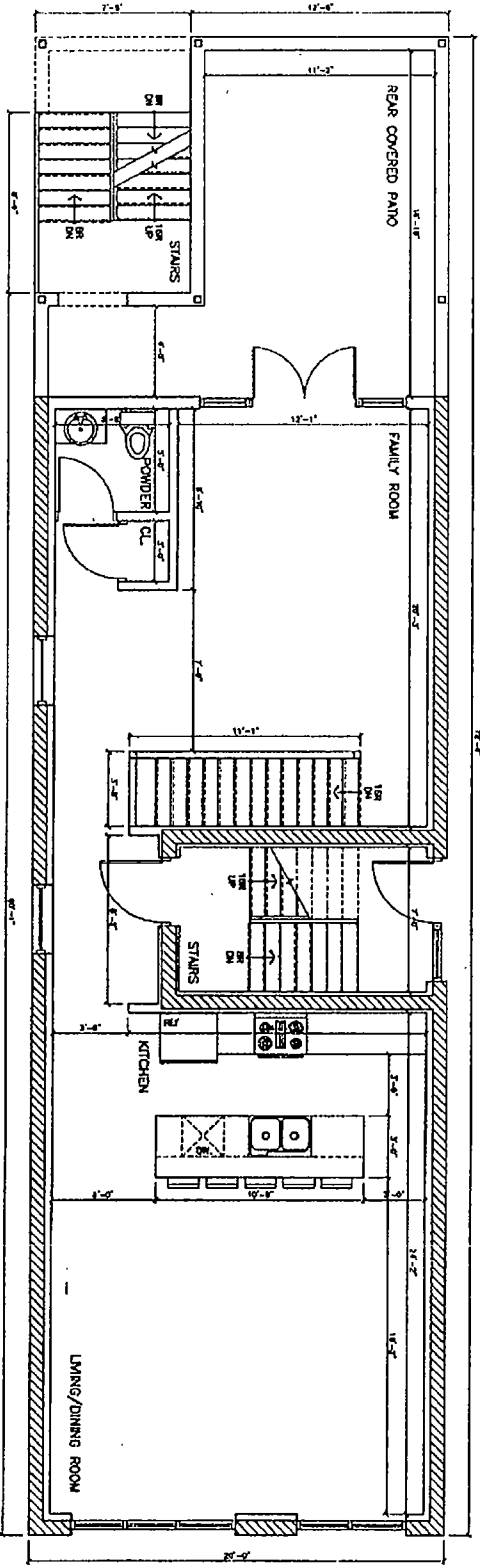
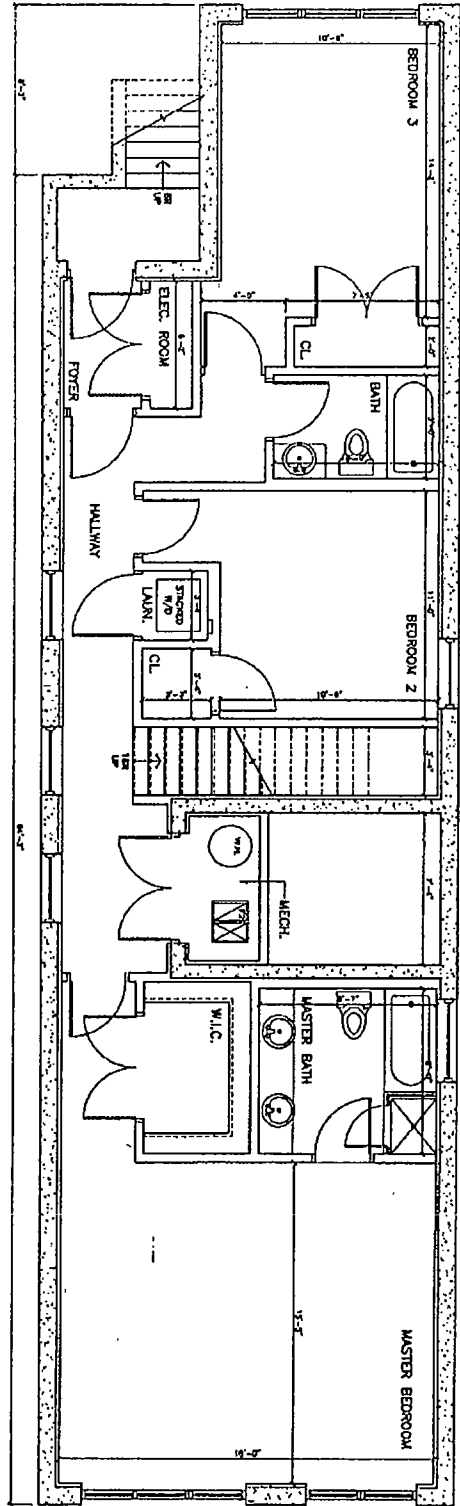
THE ARCHITECT HAS REVIEWED THIS PLAN FOR COMPLIANCE WITH THE CHICAGO BUILDING CODE AND HAS FOUND IT TO BE IN COMPLIANCE WITH THE CHICAGO BUILDING CODE. THE ARCHITECT HAS REVIEWED THIS PLAN FOR COMPLIANCE WITH THE CHICAGO BUILDING CODE AND HAS FOUND IT TO BE IN COMPLIANCE WITH THE CHICAGO BUILDING CODE. THE ARCHITECT HAS REVIEWED THIS PLAN FOR COMPLIANCE WITH THE CHICAGO BUILDING CODE AND HAS FOUND IT TO BE IN COMPLIANCE WITH THE CHICAGO BUILDING CODE. THE ARCHITECT HAS REVIEWED THIS PLAN FOR COMPLIANCE WITH THE CHICAGO BUILDING CODE AND HAS FOUND IT TO BE IN COMPLIANCE WITH THE CHICAGO BUILDING CODE. THE ARCHITECT HAS REVIEWED THIS PLAN FOR COMPLIANCE WITH THE CHICAGO BUILDING CODE AND HAS FOUND IT TO BE IN COMPLIANCE WITH THE CHICAGO BUILDING CODE.

PROJECT: TWO - THREE STORY - THREE DWELLING UNIT MASONRY BUILDINGS WITH BASEMENT AND TWO - THREE CAR MASONRY GARAGES WITH ROOF DECK
 ADDRESS: 1514-18 W. DIVERSEY PKWY., CHICAGO, IL 60614
 ARCHITECT: ARCHITECTS [unreadable]
 DATE: [unreadable]

CODE MATRIX, NOTES,
 & SITE PLAN
 1514-18 W. DIVERSEY PKWY.,
 CHICAGO, IL 60614

NO.	DESCRIPTION
1	Excavation
2	Foundation
3	Structural Steel
4	Formwork
5	Reinforcing Concrete
6	Concrete Slab
7	Concrete Wall
8	Concrete Column
9	Concrete Beam
10	Concrete Deck
11	Concrete Stair
12	Concrete Foundation
13	Concrete Retaining Wall
14	Concrete Footing
15	Concrete Pier
16	Concrete Wall
17	Concrete Column
18	Concrete Beam
19	Concrete Slab
20	Concrete Deck
21	Concrete Stair
22	Concrete Foundation
23	Concrete Retaining Wall
24	Concrete Footing
25	Concrete Pier
26	Concrete Wall
27	Concrete Column
28	Concrete Beam
29	Concrete Slab
30	Concrete Deck
31	Concrete Stair
32	Concrete Foundation
33	Concrete Retaining Wall
34	Concrete Footing
35	Concrete Pier
36	Concrete Wall
37	Concrete Column
38	Concrete Beam
39	Concrete Slab
40	Concrete Deck
41	Concrete Stair
42	Concrete Foundation
43	Concrete Retaining Wall
44	Concrete Footing
45	Concrete Pier
46	Concrete Wall
47	Concrete Column
48	Concrete Beam
49	Concrete Slab
50	Concrete Deck
51	Concrete Stair
52	Concrete Foundation
53	Concrete Retaining Wall
54	Concrete Footing
55	Concrete Pier
56	Concrete Wall
57	Concrete Column
58	Concrete Beam
59	Concrete Slab
60	Concrete Deck
61	Concrete Stair
62	Concrete Foundation
63	Concrete Retaining Wall
64	Concrete Footing
65	Concrete Pier
66	Concrete Wall
67	Concrete Column
68	Concrete Beam
69	Concrete Slab
70	Concrete Deck
71	Concrete Stair
72	Concrete Foundation
73	Concrete Retaining Wall
74	Concrete Footing
75	Concrete Pier
76	Concrete Wall
77	Concrete Column
78	Concrete Beam
79	Concrete Slab
80	Concrete Deck
81	Concrete Stair
82	Concrete Foundation
83	Concrete Retaining Wall
84	Concrete Footing
85	Concrete Pier
86	Concrete Wall
87	Concrete Column
88	Concrete Beam
89	Concrete Slab
90	Concrete Deck
91	Concrete Stair
92	Concrete Foundation
93	Concrete Retaining Wall
94	Concrete Footing
95	Concrete Pier
96	Concrete Wall
97	Concrete Column
98	Concrete Beam
99	Concrete Slab
100	Concrete Deck
101	Concrete Stair

ARCHITECTS [unreadable]
 1514-18 W. DIVERSEY PKWY., CHICAGO, IL 60614
 PHONE: [unreadable]
 FAX: [unreadable]
 SCALE: 1/8" = 1'-0"
 DATE: T1.0
 109-9



A1.0

PROJECT:
1514 W. DIVERSEY
SCALE:
DATE:
11-05-2010

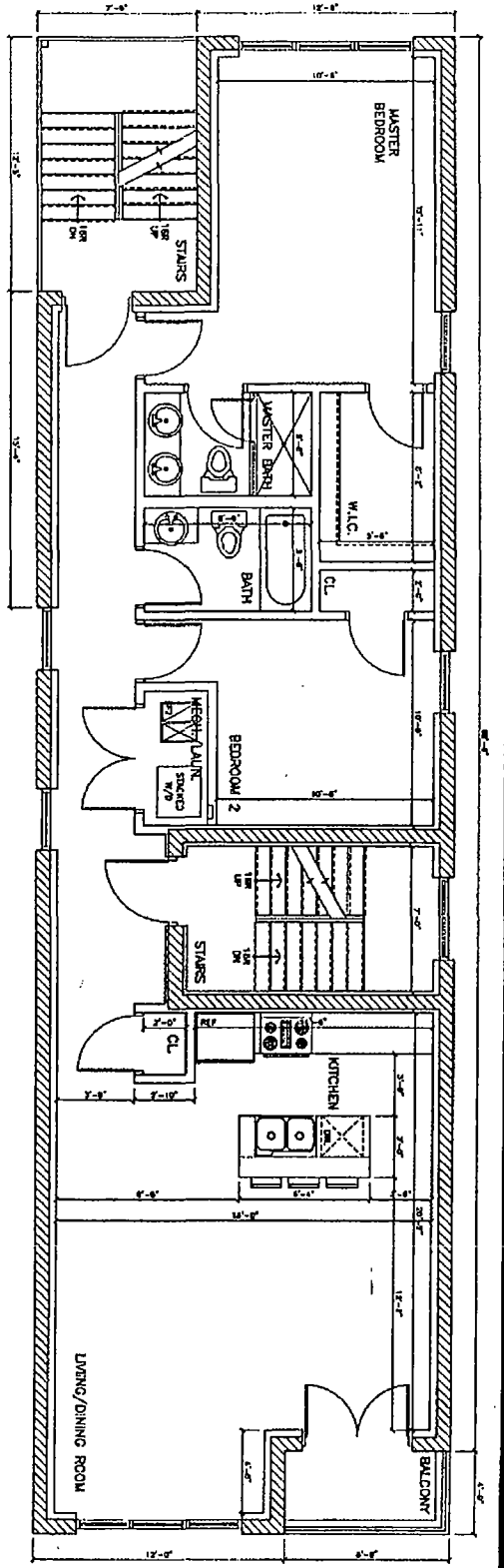
ARCHITECTURE
ARCHITECTS
ARCHITECTURAL SHOW ROOM

1514-18 W. DIVERSEY
CHICAGO, IL 60614

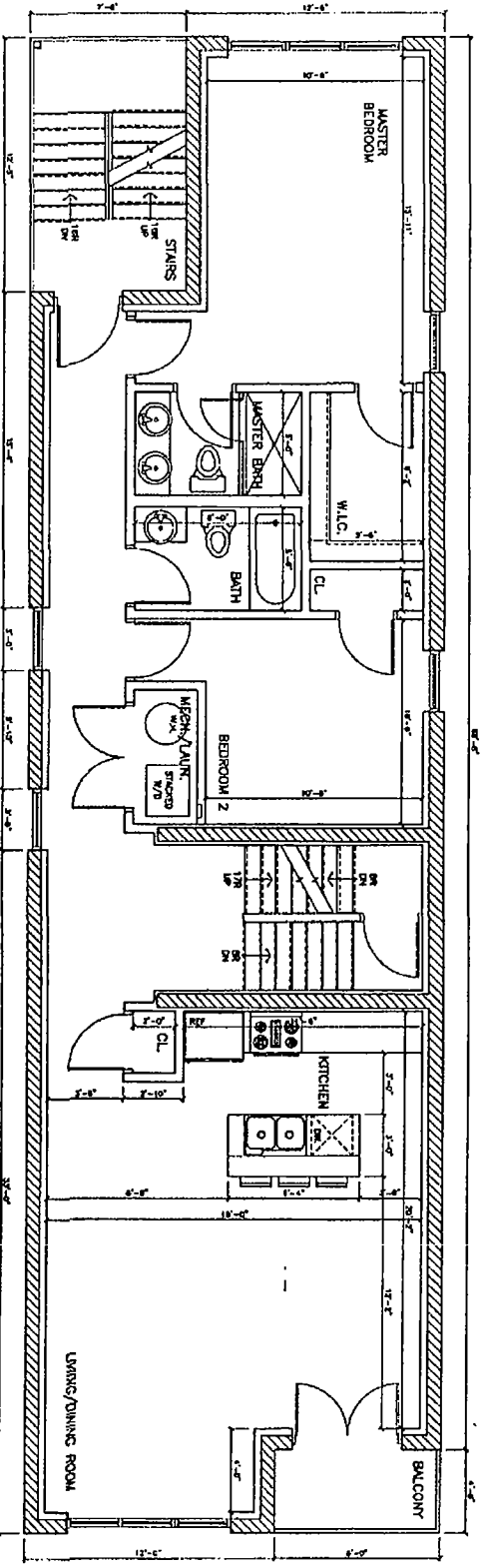
1514 W. DIVERSEY PKWY.
PROPOSED
FLOOR PLANS

DATE:
DRAWN BY:
CHECKED BY:
SCALE:
DATE:

FINAL FOR PUBLICATION



3 SECOND FLOOR PLAN
SCALE: 3/8" = 1'-0"

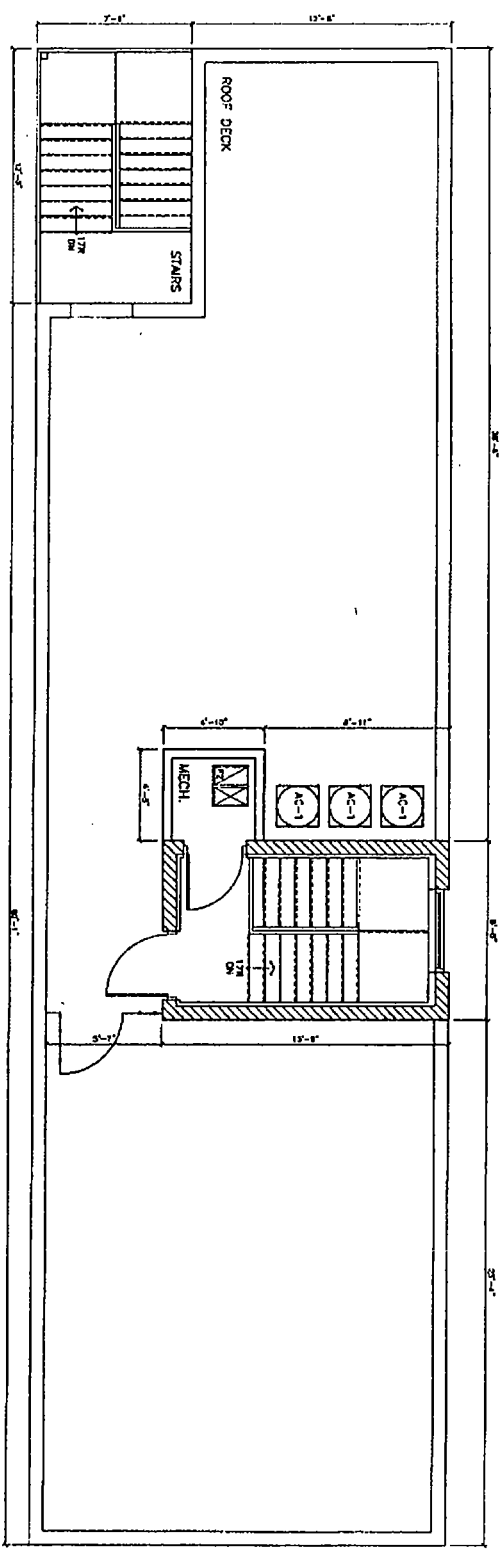


4 THIRD FLOOR PLAN
SCALE: 3/8" = 1'-0"

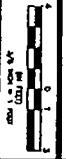


<p>PROJECT: 1514 W. DIVERSEY PKWY. CHICAGO, IL 60614</p> <p>DATE: 11-11-11</p> <p>SCALE: 3/8" = 1'-0"</p> <p>PROJECT NO.: 1145-7643</p>	<p>ARCHITECTURE: ARCHITECTS</p> <p>PLANNING: ARCHITECTS</p> <p>ARCHITECTURAL ENGINEERING: ARCHITECTS</p>	<p>2122 N. Diversey Ave. Chicago, IL 60614</p> <p>773.771.3114 (office) 773.771.9554 (cell)</p>	<p>1514-18 W. DIVERSEY CHICAGO, IL 60614</p>	<p>1514 W. DIVERSEY PKWY. PROPOSED FLOOR PLANS</p>	<p>DATE: 11-11-11</p> <p>BY: [Signature]</p> <p>CHECKED: [Signature]</p>
					<p>SCALE: 3/8" = 1'-0"</p>

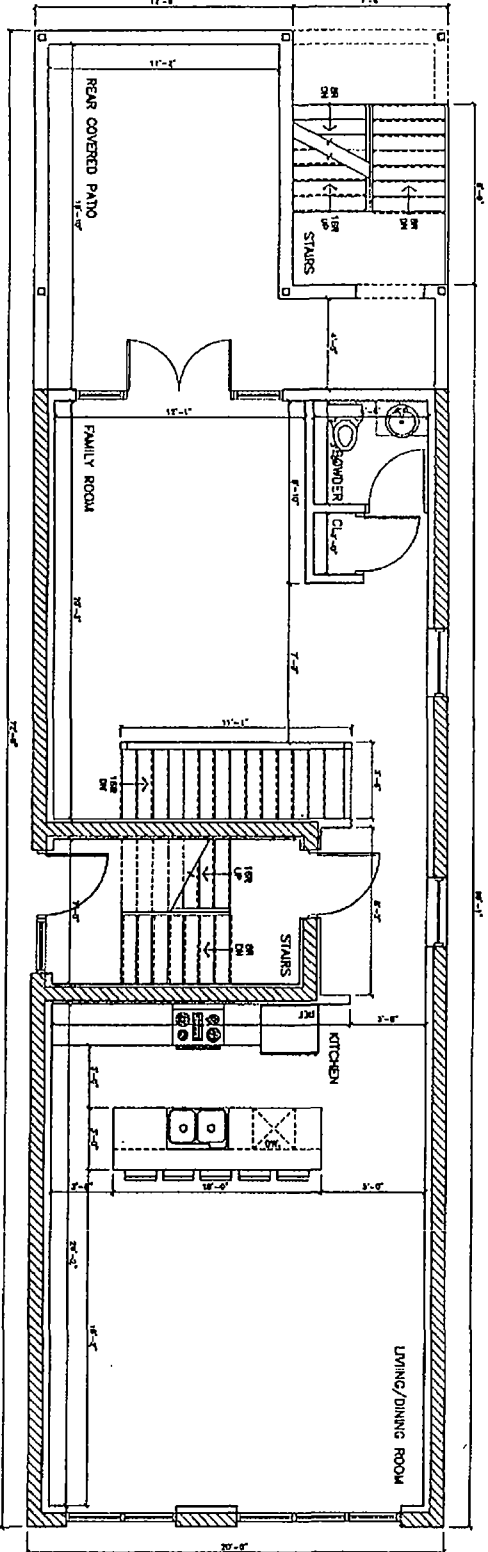
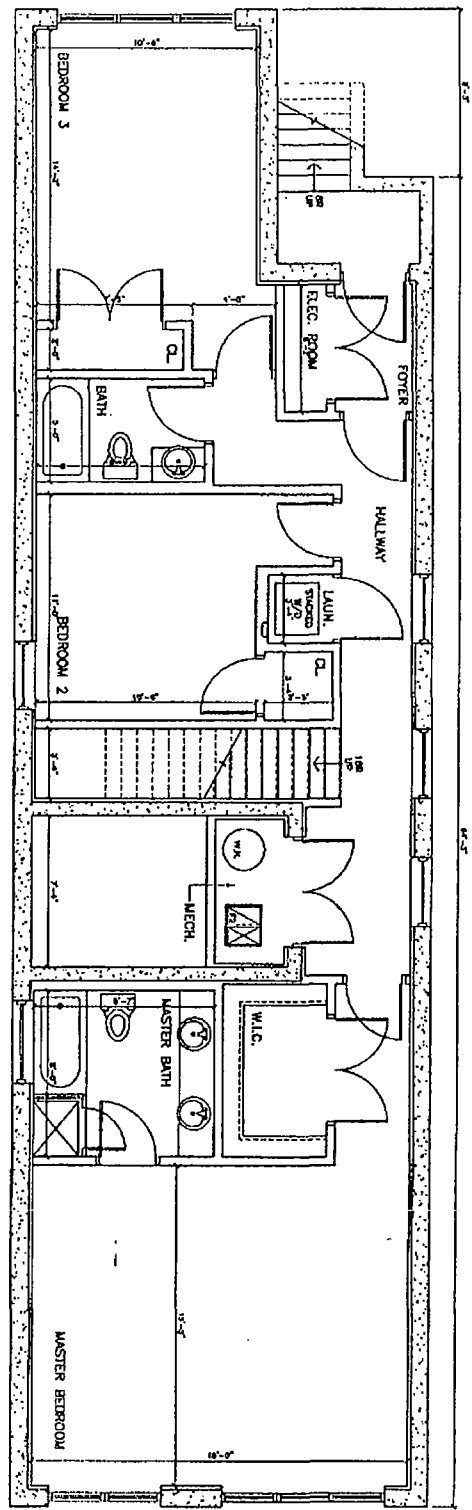
A1.1



5
ROOF DECK PLAN
SCALE: 3/8"=1'-0"



<p>A1.2</p>	<p>PROJECT 1514 W. DIVERSEY PKWY.</p>	<p>ARCHITECTURE ARCHITECTS</p>	<p>1121 N. Green Ave. CHICAGO, IL 60647</p>	<p>1514-18 W. DIVERSEY CHICAGO, IL 60614</p>	<p>1514 W. DIVERSEY PKWY. PROPOSED FLOOR PLANS</p>	<p>DESIGNED BY: J.A.L. DRAWN BY: M. DATE: 12-05-2010</p>
	<p>SCALE: 2 1/2" = 1'-0"</p>	<p>PLANNING ARCHITECTURAL ENGINEERING</p>	<p>175 775 8750 (PH) 312 712 8744 (FX)</p>			



A2.0

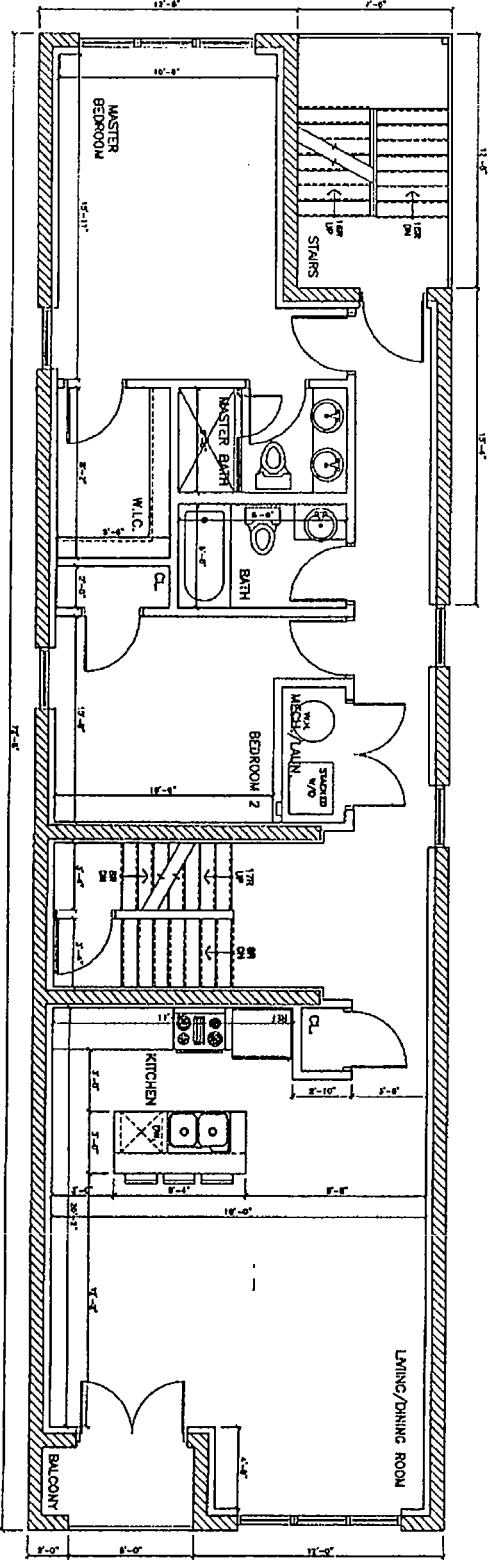
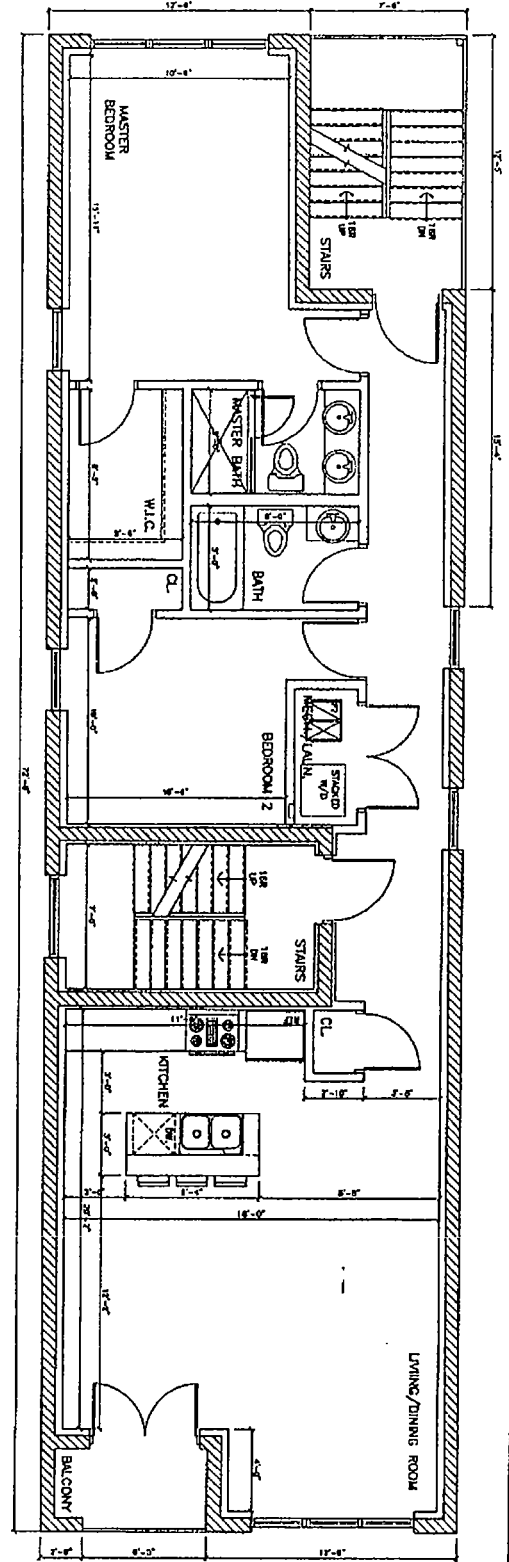
PROJECT: 1518 W. DIVERSEY
 SCALE: 3/8" = 1'-0"
 DATE: 11-09-2010

ARCHITECTURE
ARCHITECTS
 ARCHITECTURAL ENGINEERING

1518-18 W. DIVERSEY
 CHICAGO, IL 60614

1518 W. DIVERSEY PKWY.
 PROPOSED
 FLOOR PLANS

DATE: 11-09-2010
 DRAWN BY: [Name]
 CHECKED BY: [Name]

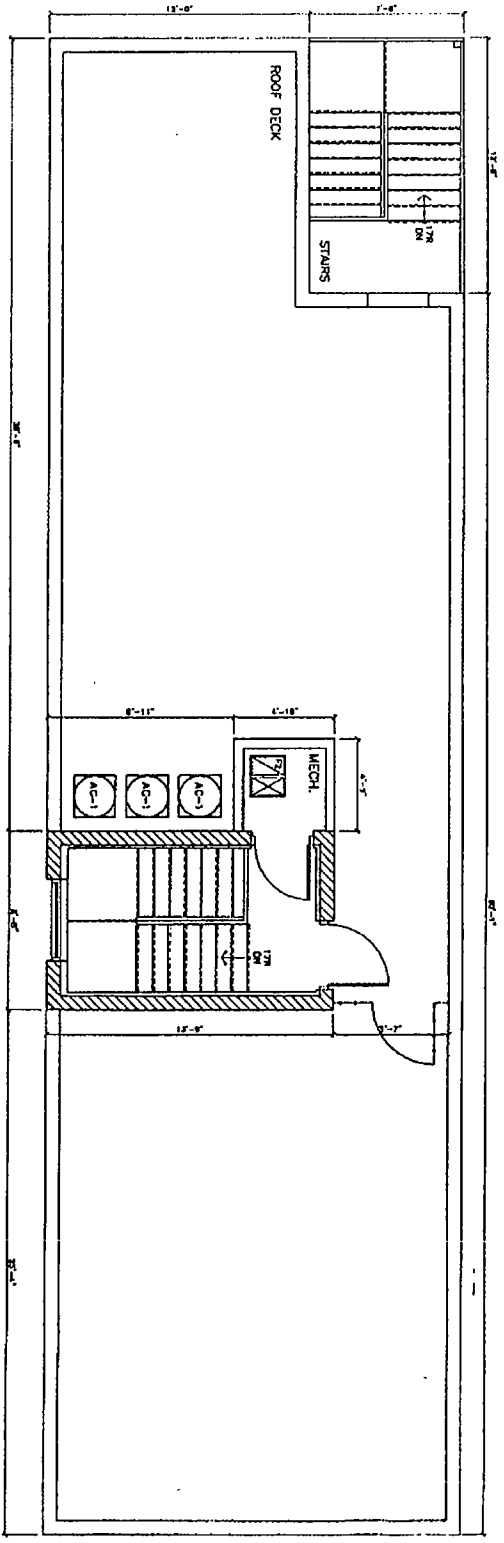


PROJECT 1518 W. DIVERSEY SCALE 3/8" = 1'-0" DATE 12-06-2011	ARCHITECTURE ARCHITECTS ARCHITECTURAL ENGINEERING	2112 N. ELSTON AVE. CHICAGO IL 60617
		773.722.2700 773.722.2704

1514-18 W. DIVERSEY
CHICAGO, IL 60814

1518 W. DIVERSEY PKWY.
PROPOSED
FLOOR PLANS

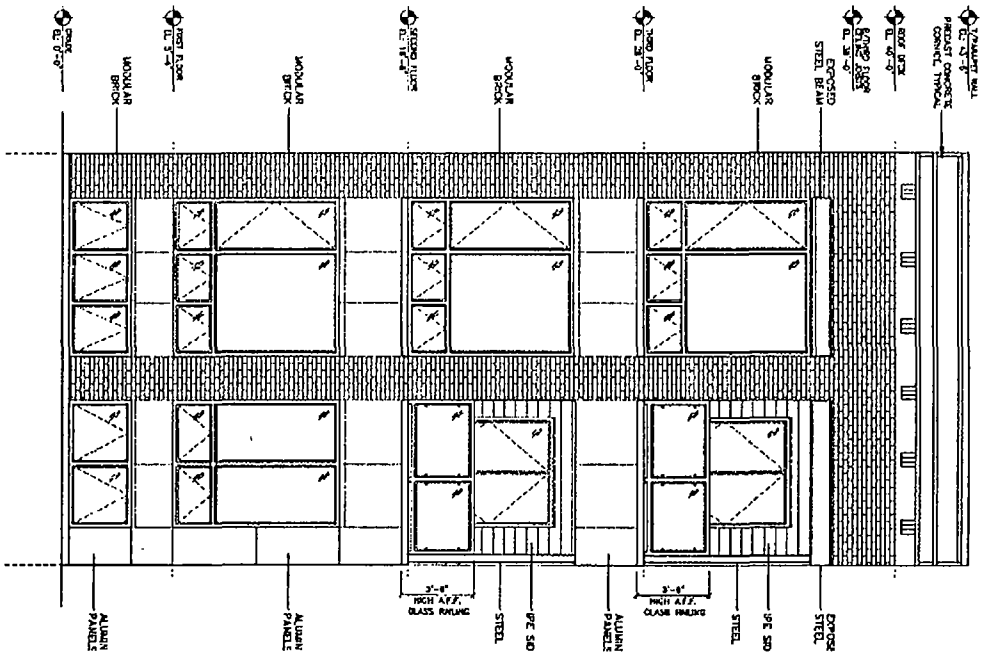
A2.1
1/2" = 1'-0"



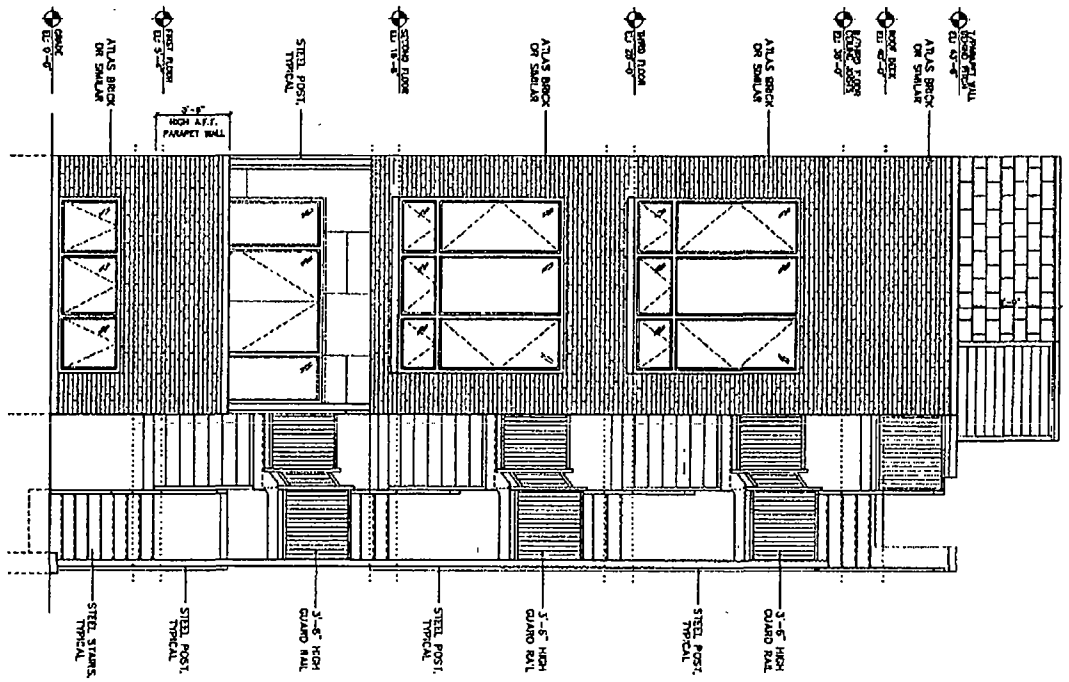
5
ROOF DECK PLAN
SCALE: 3/8"=1'-0"



<p>A2.2 1 OF 12</p>	<p>PROJECT: 1514-18 W. DIVERSEY</p>	<p>ARCHITECTURE</p>	<p>2121 S. Green Ave. Chicago, IL 60617</p>	<p>1514-18 W. DIVERSEY PKWY. CHICAGO, IL 60614</p>	<p>1518 W. DIVERSEY PKWY. PROPOSED FLOOR PLANS</p>	<p>DATE: 11-01-2008</p>	<p>ARCHITECT: JAN</p>	<p>SCALE: 3/8"=1'-0"</p>
	<p>DATE: 11-01-2008</p>	<p>ARCHITECTURE</p>	<p>712 772 2366 (off) 772 778 5136 (cell)</p>					



1 FRONT ELEVATION
SCALE: 3/8"=1'-0"



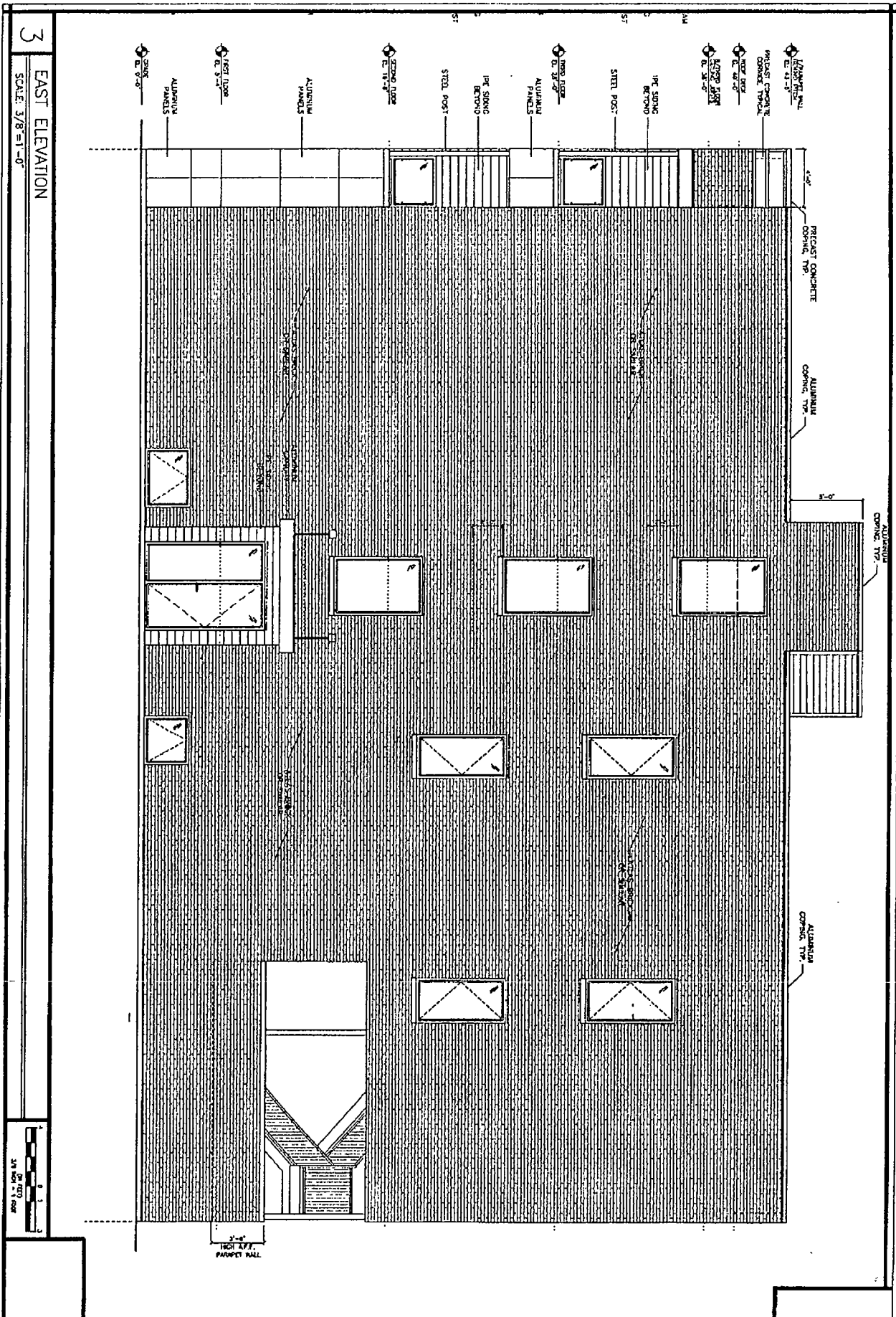
2 REAR ELEVATION
SCALE: 3/8"=1'-0"



<p>PROJECT 1514-18 DIVERSEY SCALE: 3/8"=1'-0" DATE: 11.6.2016</p>	<p>ARCHITECTURE ARCHITECTS ARCHITECTURAL ENGINEERING</p>	<p>3223 N. Green Ave. Chicago, IL 60642 773.775.8700 ext 444 773.775.1614 ext 444</p>	<p>1514-18 W. DIVERSEY CHICAGO, IL 60614</p>	<p>1514 W. DIVERSEY PKWY. PROPOSED ELEVATIONS</p>	<p>DATE PLOTTED: 11/6/2016 10:44 AM</p>
					<p>SCALE: 3/8"=1'-0"</p>

A3.0

FINAL FOR PUBLICATION



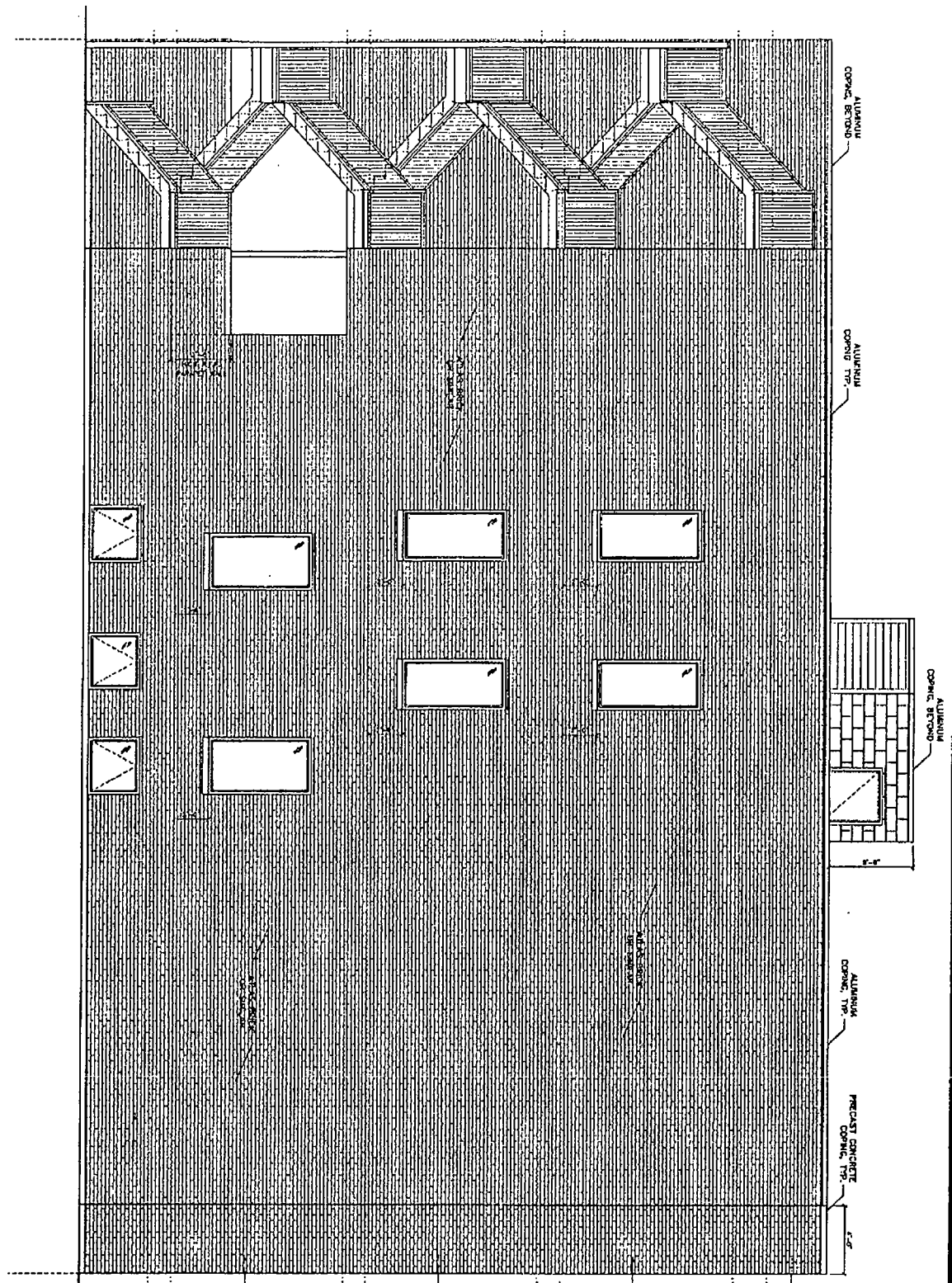
3 EAST ELEVATION
SCALE: 3/8"=1'-0"



A3.1 <small>1/8" = 1'-0"</small>	PROJECT 1514 W. DIVERSEY PKWY.	ARCHITECTURE ARCHITECTS	3171 N. OLIVE ST. APT. 400 CHICAGO, IL 60647	1514-18 W. DIVERSEY PKWY. CHICAGO, IL 60614	1514 W. DIVERSEY PKWY. EAST ELEVATION
	SCALE 3/8" = 1'-0"	ARCHITECTS ARCHITECTURAL ENGINEERS	773.773.8756 773.773.1234 FAX	DATE 11.25.2015	DRAWN BY J.A.M.

22

1 WEST ELEVATION
SCALE: 1/8"=1'-0"



A3.2

PROJECT:
1514-18 W. DIVERSEY
SCALE:
BY: JCF
DATE:
15-05-2018

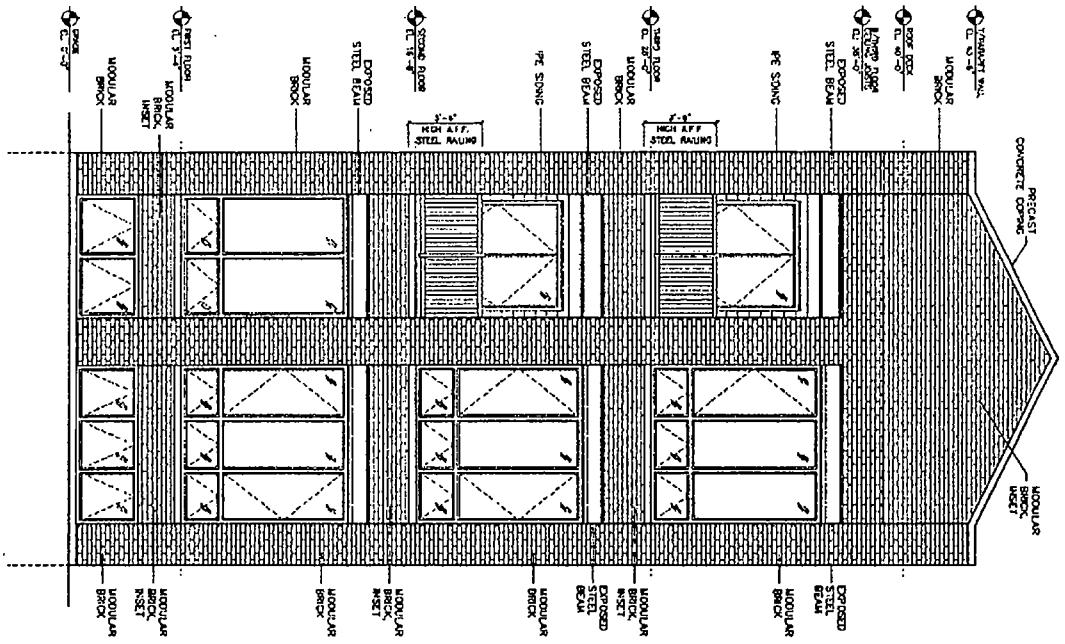
ARCHITECTURE
ARCHITECTS
2113 N. Halsted Ave.
Chicago, IL 60617
773.732.2700
112.732.8100

1514-18 W. DIVERSEY
CHICAGO, IL 60614

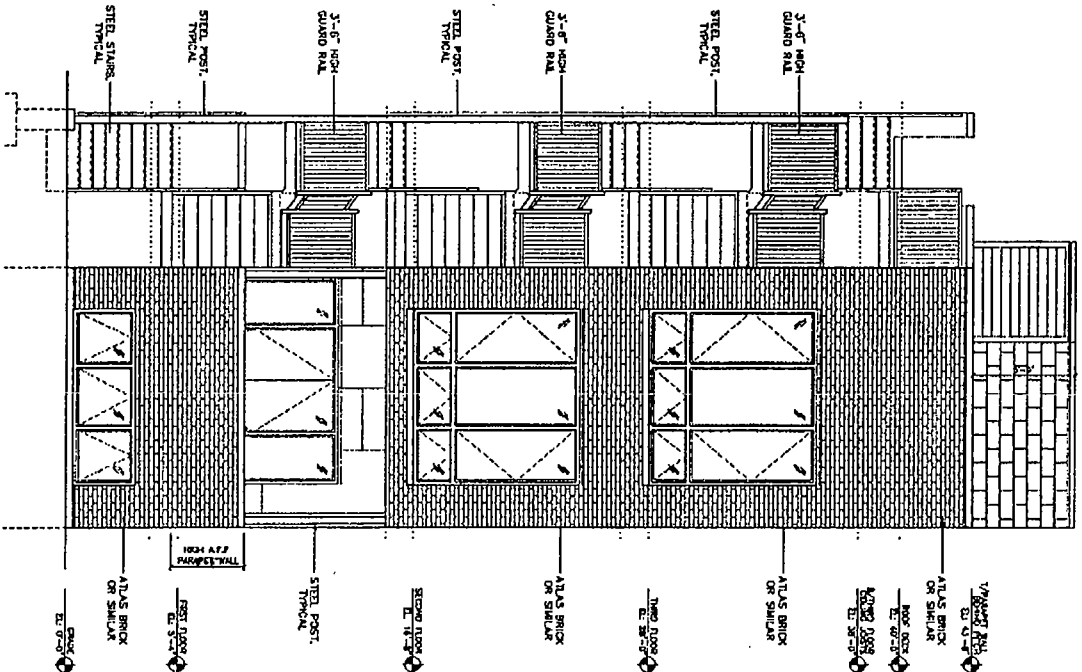
1514 W. DIVERSEY PKWY.
WEST ELEVATION

DATE: 15-05-2018
SCALE: 1/8"=1'-0"

FINAL FOR PUBLICATION



1 FRONT ELEVATION
SCALE: 3/8"=1'-0"



2 REAR ELEVATION
SCALE: 3/8"=1'-0"



A4.0
7/8" = 1'

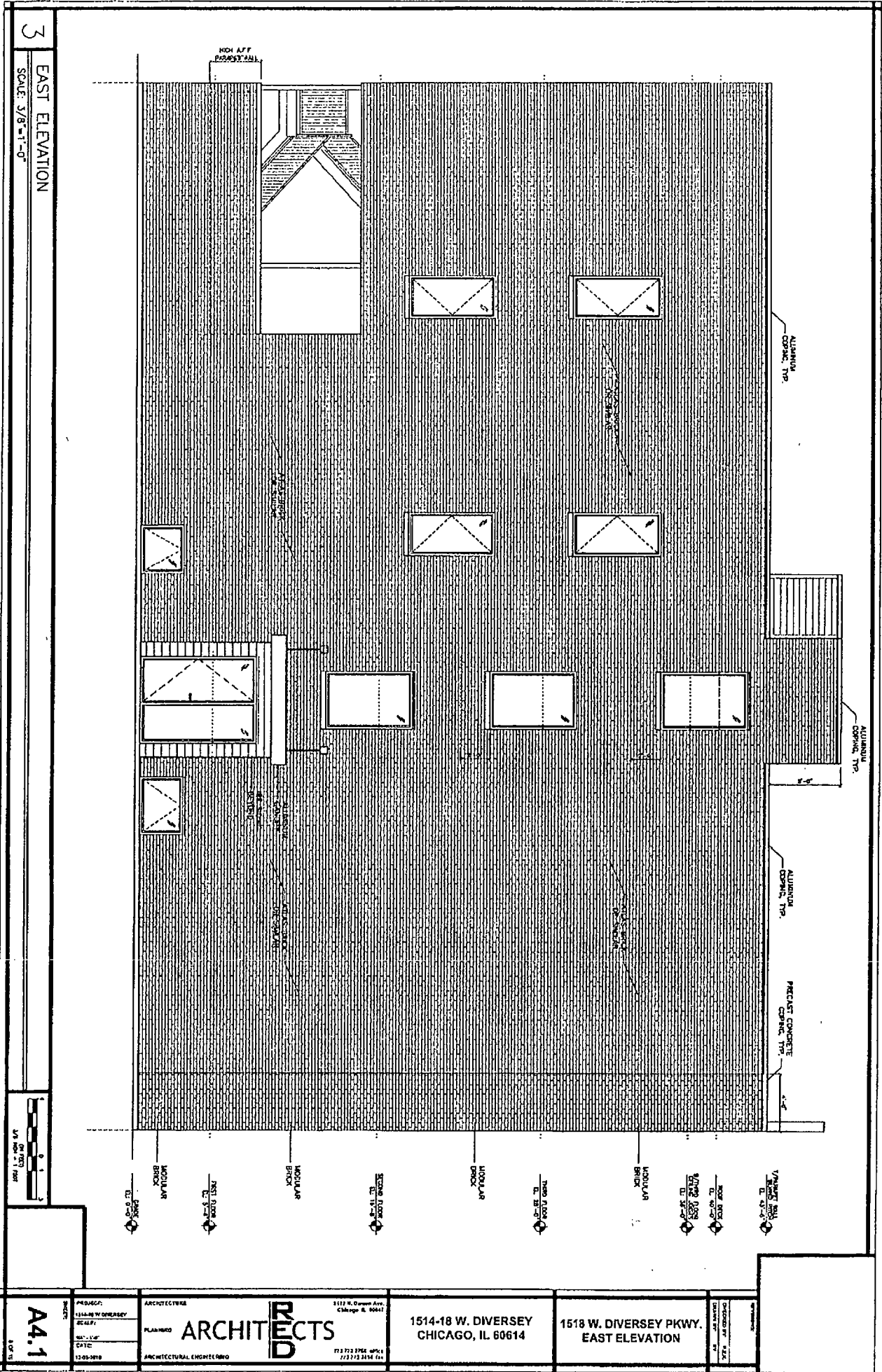
PROJECT: 1514-18 W. DIVERSEY PKWY.
SCALE: 3/8" = 1'-0"
DATE: 12-08-2010
DRAWN BY: [blank]

ARCHITECTURE
PLANNING
ARCHITECTURAL ENGINEERING
ARCHITECTS
112 W. QUINN ST.
CHICAGO, IL 60612
TEL: 312.371.3156
FAX: 312.371.3158

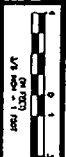
1514-18 W. DIVERSEY PKWY.
CHICAGO, IL 60614

1518 W. DIVERSEY PKWY.
PROPOSED
ELEVATIONS

REVISION
DATE
BY
CHECKED BY
DATE



3 EAST ELEVATION
SCALE: 3/8"=1'-0"



A4.1

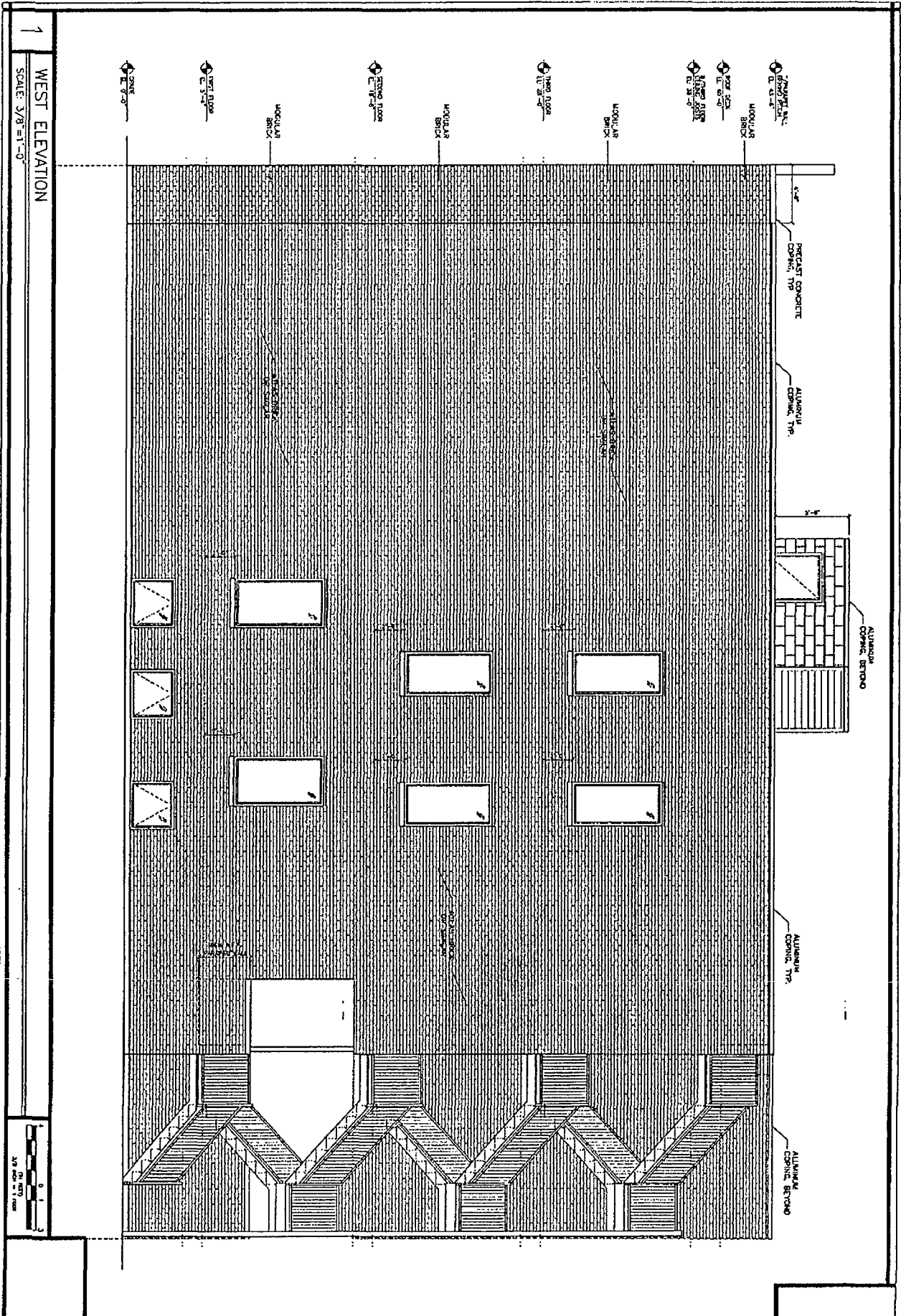
PROJECT: 1514-18 W. DIVERSEY
SCALE: 3/8"=1'-0"
DATE: 11-03-89

ARCHITECTS
PLANNED BY: ARCHITECTS
ARCHITECTURAL ENGINEERING

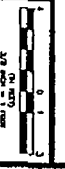
1514-18 W. DIVERSEY
CHICAGO, IL 60614

1518 W. DIVERSEY PKWY.
EAST ELEVATION

11-03-89



1
WEST ELEVATION
SCALE: 3/8" = 1'-0"



<p>PROJECT 1514-18 W. DIVERSEY SCALE: 3/8" = 1'-0" DATE: 10/20/11 DRAWN BY: [blank]</p>	<p>ARCHITECTURE</p>	<p>3123 N. Dearborn Ave. Chicago, IL 60611</p> <p>ARCHITECTS</p> <p>773.772.2756 (toll-free) 773.772.2004 (fax)</p>	<p>1514-18 W. DIVERSEY CHICAGO, IL 60614</p>	<p>1518 W. DIVERSEY PKWY. WEST ELEVATION</p>	<p>DATE: 10/20/11 DRAWN BY: [blank]</p>
	<p>PLANNING</p>				

A4.2
10/20/11

TWO - THREE STORY - THREE DWELLING UNIT MASONRY BUILDINGS WITH ROOF DECK BASEMENT AND TWO - THREE CAR MASONRY GARAGES WITH ROOF DECK

CODE MATRIX, NOTES,
& SITE PLAN
1514-18 W. DIVERSEY PKWY.
CHICAGO, IL 60614

SCALE OF SHEETS:
ARCHITECTURE: 1/8" = 1'-0"
MECHANICAL/ELECTRICAL: 1/4" = 1'-0"
STRUCTURAL: 1/4" = 1'-0"

- INDEX OF DRAWINGS:
- T-1.0 CODE MATRIX, SITE PLAN AND NOTES
 - A-1.0 PROPOSED FLOOR PLANS (1514)
 - M-1.0 PROPOSED MECHANICAL/ELECTRICAL PLANS (1514)
 - S-1.0 PROPOSED STRUCTURAL FOUNDATION AND FOOTING PLANS (1514)
 - S-2.0 PROPOSED STRUCTURAL FLOOR SLABS (1514)
 - S-3.0 PROPOSED STRUCTURAL ROOF DECK PLANS (1514)
 - S-4.0 PROPOSED STRUCTURAL WALLS (1514)
 - S-5.0 PROPOSED STRUCTURAL STAIRS (1514)
 - S-6.0 PROPOSED STRUCTURAL ELEVATIONS (1514)
 - S-7.0 PROPOSED STRUCTURAL ELEVATIONS (1514)
 - S-8.0 PROPOSED STRUCTURAL ELEVATIONS (1514)
 - S-9.0 PROPOSED STRUCTURAL ELEVATIONS (1514)
 - S-10.0 PROPOSED STRUCTURAL ELEVATIONS (1514)

REVISIONS:

NO.	DATE	DESCRIPTION
1	01/15/14	ISSUED FOR PERMITS
2	01/22/14	REVISIONS TO MECHANICAL/ELECTRICAL PLANS
3	01/29/14	REVISIONS TO STRUCTURAL PLANS
4	02/05/14	REVISIONS TO MECHANICAL/ELECTRICAL PLANS
5	02/12/14	REVISIONS TO STRUCTURAL PLANS
6	02/19/14	REVISIONS TO MECHANICAL/ELECTRICAL PLANS
7	02/26/14	REVISIONS TO STRUCTURAL PLANS
8	03/05/14	REVISIONS TO MECHANICAL/ELECTRICAL PLANS
9	03/12/14	REVISIONS TO STRUCTURAL PLANS
10	03/19/14	REVISIONS TO MECHANICAL/ELECTRICAL PLANS
11	03/26/14	REVISIONS TO STRUCTURAL PLANS
12	04/02/14	REVISIONS TO MECHANICAL/ELECTRICAL PLANS
13	04/09/14	REVISIONS TO STRUCTURAL PLANS
14	04/16/14	REVISIONS TO MECHANICAL/ELECTRICAL PLANS
15	04/23/14	REVISIONS TO STRUCTURAL PLANS
16	04/30/14	REVISIONS TO MECHANICAL/ELECTRICAL PLANS
17	05/07/14	REVISIONS TO STRUCTURAL PLANS
18	05/14/14	REVISIONS TO MECHANICAL/ELECTRICAL PLANS
19	05/21/14	REVISIONS TO STRUCTURAL PLANS
20	05/28/14	REVISIONS TO MECHANICAL/ELECTRICAL PLANS
21	06/04/14	REVISIONS TO STRUCTURAL PLANS
22	06/11/14	REVISIONS TO MECHANICAL/ELECTRICAL PLANS
23	06/18/14	REVISIONS TO STRUCTURAL PLANS
24	06/25/14	REVISIONS TO MECHANICAL/ELECTRICAL PLANS
25	07/02/14	REVISIONS TO STRUCTURAL PLANS
26	07/09/14	REVISIONS TO MECHANICAL/ELECTRICAL PLANS
27	07/16/14	REVISIONS TO STRUCTURAL PLANS
28	07/23/14	REVISIONS TO MECHANICAL/ELECTRICAL PLANS
29	07/30/14	REVISIONS TO STRUCTURAL PLANS
30	08/06/14	REVISIONS TO MECHANICAL/ELECTRICAL PLANS
31	08/13/14	REVISIONS TO STRUCTURAL PLANS
32	08/20/14	REVISIONS TO MECHANICAL/ELECTRICAL PLANS
33	08/27/14	REVISIONS TO STRUCTURAL PLANS
34	09/03/14	REVISIONS TO MECHANICAL/ELECTRICAL PLANS
35	09/10/14	REVISIONS TO STRUCTURAL PLANS
36	09/17/14	REVISIONS TO MECHANICAL/ELECTRICAL PLANS
37	09/24/14	REVISIONS TO STRUCTURAL PLANS
38	10/01/14	REVISIONS TO MECHANICAL/ELECTRICAL PLANS
39	10/08/14	REVISIONS TO STRUCTURAL PLANS
40	10/15/14	REVISIONS TO MECHANICAL/ELECTRICAL PLANS
41	10/22/14	REVISIONS TO STRUCTURAL PLANS
42	10/29/14	REVISIONS TO MECHANICAL/ELECTRICAL PLANS
43	11/05/14	REVISIONS TO STRUCTURAL PLANS
44	11/12/14	REVISIONS TO MECHANICAL/ELECTRICAL PLANS
45	11/19/14	REVISIONS TO STRUCTURAL PLANS
46	11/26/14	REVISIONS TO MECHANICAL/ELECTRICAL PLANS
47	12/03/14	REVISIONS TO STRUCTURAL PLANS
48	12/10/14	REVISIONS TO MECHANICAL/ELECTRICAL PLANS
49	12/17/14	REVISIONS TO STRUCTURAL PLANS
50	12/24/14	REVISIONS TO MECHANICAL/ELECTRICAL PLANS

ENERGY CONSERVATION CODE COMPLIANCE STATEMENT

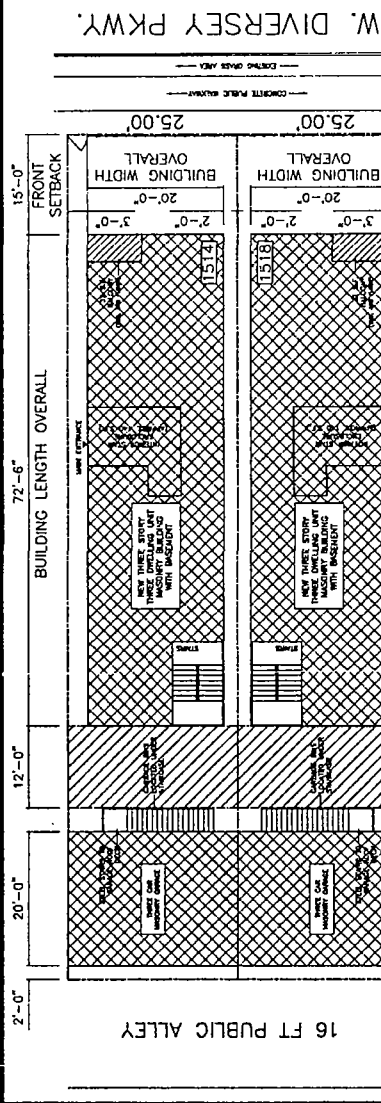
THESE PLANS HAVE BEEN PREPARED IN ACCORDANCE WITH THE ENERGY CONSERVATION CODE OF CHICAGO, ILL. 2012.

ARCHITECT: ARCHITECTURE
PROJECT: 1514-18 W. DIVERSEY PKWY.
SHEET: T-1.0
DATE: 01/15/14

CODE MATRIX

THIS MATRIX IS A SUMMARY OF THE CODES AND REGULATIONS THAT APPLY TO THE PROJECT. IT IS INTENDED TO BE USED AS A REFERENCE FOR THE DESIGNER AND THE PERMITTING AGENCIES. THE MATRIX IS NOT A SUBSTITUTE FOR THE FULL CODES AND REGULATIONS.

SECTION	DESCRIPTION	APPLICABLE CODES AND REGULATIONS
1.0	GENERAL BUILDING	CHICAGO BUILDING CODE (CBC) 2012
2.0	MECHANICAL/ELECTRICAL	CHICAGO MECHANICAL/ELECTRICAL CODE (CM/EC) 2012
3.0	STRUCTURAL	CHICAGO STRUCTURAL CODE (CSC) 2012
4.0	PLUMBING	CHICAGO PLUMBING CODE (CPC) 2012
5.0	FIRE	CHICAGO FIRE CODE (CFC) 2012
6.0	ENVIRONMENTAL	CHICAGO ENVIRONMENTAL CODE (CEC) 2012
7.0	ENERGY CONSERVATION	CHICAGO ENERGY CONSERVATION CODE (CECC) 2012
8.0	SAFETY	CHICAGO SAFETY CODE (CSC) 2012
9.0	DISABILITY ACCESS	CHICAGO DISABILITY ACCESS CODE (CDAC) 2012
10.0	PLANNING	CHICAGO PLANNING CODE (CPC) 2012
11.0	TRAVEL	CHICAGO TRAVEL CODE (CTC) 2012
12.0	UTILITIES	CHICAGO UTILITIES CODE (CUC) 2012
13.0	WATER	CHICAGO WATER CODE (CWC) 2012
14.0	SEWER	CHICAGO SEWER CODE (CSC) 2012
15.0	STORMWATER	CHICAGO STORMWATER CODE (CSTC) 2012
16.0	LANDSCAPE	CHICAGO LANDSCAPE CODE (CLC) 2012
17.0	RECREATION	CHICAGO RECREATION CODE (CRC) 2012
18.0	AMUSEMENT	CHICAGO AMUSEMENT CODE (CAC) 2012
19.0	THEATRE	CHICAGO THEATRE CODE (CTC) 2012
20.0	CINEMA	CHICAGO CINEMA CODE (CC) 2012
21.0	CONVENTION	CHICAGO CONVENTION CODE (CC) 2012
22.0	OFFICE	CHICAGO OFFICE CODE (CO) 2012
23.0	RETAIL	CHICAGO RETAIL CODE (CR) 2012
24.0	RESTAURANT	CHICAGO RESTAURANT CODE (CR) 2012
25.0	BAR	CHICAGO BAR CODE (CB) 2012
26.0	CHEF	CHICAGO CHEF CODE (CC) 2012
27.0	LABORATORY	CHICAGO LABORATORY CODE (CLC) 2012
28.0	PHARMACY	CHICAGO PHARMACY CODE (CPC) 2012
29.0	CLINIC	CHICAGO CLINIC CODE (CC) 2012
30.0	HOSPITAL	CHICAGO HOSPITAL CODE (CHC) 2012
31.0	RESEARCH	CHICAGO RESEARCH CODE (CRC) 2012
32.0	INDUSTRIAL	CHICAGO INDUSTRIAL CODE (CIC) 2012
33.0	WAREHOUSE	CHICAGO WAREHOUSE CODE (CWC) 2012
34.0	STORAGE	CHICAGO STORAGE CODE (CS) 2012
35.0	TRUCK	CHICAGO TRUCK CODE (CTC) 2012
36.0	TRAILER	CHICAGO TRAILER CODE (CTC) 2012
37.0	BOAT	CHICAGO BOAT CODE (CB) 2012
38.0	PLANE	CHICAGO PLANE CODE (CP) 2012
39.0	RAIL	CHICAGO RAIL CODE (CR) 2012
40.0	TRAM	CHICAGO TRAM CODE (CTC) 2012
41.0	MONORAIL	CHICAGO MONORAIL CODE (CMC) 2012
42.0	TRANSIT	CHICAGO TRANSIT CODE (CTC) 2012
43.0	TRUCK	CHICAGO TRUCK CODE (CTC) 2012
44.0	TRAILER	CHICAGO TRAILER CODE (CTC) 2012
45.0	BOAT	CHICAGO BOAT CODE (CB) 2012
46.0	PLANE	CHICAGO PLANE CODE (CP) 2012
47.0	RAIL	CHICAGO RAIL CODE (CR) 2012
48.0	TRAM	CHICAGO TRAM CODE (CTC) 2012
49.0	MONORAIL	CHICAGO MONORAIL CODE (CMC) 2012
50.0	TRANSIT	CHICAGO TRANSIT CODE (CTC) 2012



ENERGY CONSERVATION CODE COMPLIANCE STATEMENT

THESE PLANS HAVE BEEN PREPARED IN ACCORDANCE WITH THE ENERGY CONSERVATION CODE OF CHICAGO, ILL. 2012.

SECTION	DESCRIPTION	APPLICABLE CODES AND REGULATIONS
1.0	GENERAL BUILDING	CHICAGO BUILDING CODE (CBC) 2012
2.0	MECHANICAL/ELECTRICAL	CHICAGO MECHANICAL/ELECTRICAL CODE (CM/EC) 2012
3.0	STRUCTURAL	CHICAGO STRUCTURAL CODE (CSC) 2012
4.0	PLUMBING	CHICAGO PLUMBING CODE (CPC) 2012
5.0	FIRE	CHICAGO FIRE CODE (CFC) 2012
6.0	ENVIRONMENTAL	CHICAGO ENVIRONMENTAL CODE (CEC) 2012
7.0	ENERGY CONSERVATION	CHICAGO ENERGY CONSERVATION CODE (CECC) 2012
8.0	SAFETY	CHICAGO SAFETY CODE (CSC) 2012
9.0	DISABILITY ACCESS	CHICAGO DISABILITY ACCESS CODE (CDAC) 2012
10.0	PLANNING	CHICAGO PLANNING CODE (CPC) 2012
11.0	TRAVEL	CHICAGO TRAVEL CODE (CTC) 2012
12.0	UTILITIES	CHICAGO UTILITIES CODE (CUC) 2012
13.0	WATER	CHICAGO WATER CODE (CWC) 2012
14.0	SEWER	CHICAGO SEWER CODE (CSC) 2012
15.0	STORMWATER	CHICAGO STORMWATER CODE (CSTC) 2012
16.0	LANDSCAPE	CHICAGO LANDSCAPE CODE (CLC) 2012
17.0	RECREATION	CHICAGO RECREATION CODE (CRC) 2012
18.0	AMUSEMENT	CHICAGO AMUSEMENT CODE (CAC) 2012
19.0	THEATRE	CHICAGO THEATRE CODE (CTC) 2012
20.0	CINEMA	CHICAGO CINEMA CODE (CC) 2012
21.0	CONVENTION	CHICAGO CONVENTION CODE (CC) 2012
22.0	OFFICE	CHICAGO OFFICE CODE (CO) 2012
23.0	RETAIL	CHICAGO RETAIL CODE (CR) 2012
24.0	RESTAURANT	CHICAGO RESTAURANT CODE (CR) 2012
25.0	BAR	CHICAGO BAR CODE (CB) 2012
26.0	CHEF	CHICAGO CHEF CODE (CC) 2012
27.0	LABORATORY	CHICAGO LABORATORY CODE (CLC) 2012
28.0	PHARMACY	CHICAGO PHARMACY CODE (CPC) 2012
29.0	CLINIC	CHICAGO CLINIC CODE (CC) 2012
30.0	HOSPITAL	CHICAGO HOSPITAL CODE (CHC) 2012
31.0	RESEARCH	CHICAGO RESEARCH CODE (CRC) 2012
32.0	INDUSTRIAL	CHICAGO INDUSTRIAL CODE (CIC) 2012
33.0	WAREHOUSE	CHICAGO WAREHOUSE CODE (CWC) 2012
34.0	STORAGE	CHICAGO STORAGE CODE (CS) 2012
35.0	TRUCK	CHICAGO TRUCK CODE (CTC) 2012
36.0	TRAILER	CHICAGO TRAILER CODE (CTC) 2012
37.0	BOAT	CHICAGO BOAT CODE (CB) 2012
38.0	PLANE	CHICAGO PLANE CODE (CP) 2012
39.0	RAIL	CHICAGO RAIL CODE (CR) 2012
40.0	TRAM	CHICAGO TRAM CODE (CTC) 2012
41.0	MONORAIL	CHICAGO MONORAIL CODE (CMC) 2012
42.0	TRANSIT	CHICAGO TRANSIT CODE (CTC) 2012
43.0	TRUCK	CHICAGO TRUCK CODE (CTC) 2012
44.0	TRAILER	CHICAGO TRAILER CODE (CTC) 2012
45.0	BOAT	CHICAGO BOAT CODE (CB) 2012
46.0	PLANE	CHICAGO PLANE CODE (CP) 2012
47.0	RAIL	CHICAGO RAIL CODE (CR) 2012
48.0	TRAM	CHICAGO TRAM CODE (CTC) 2012
49.0	MONORAIL	CHICAGO MONORAIL CODE (CMC) 2012
50.0	TRANSIT	CHICAGO TRANSIT CODE (CTC) 2012

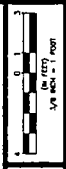
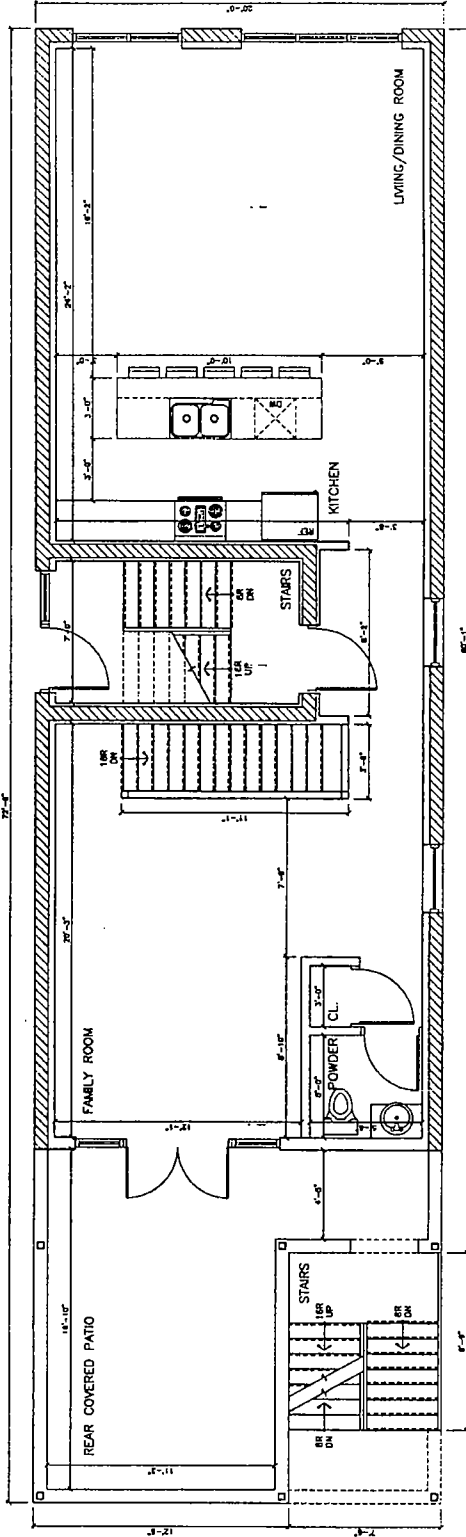
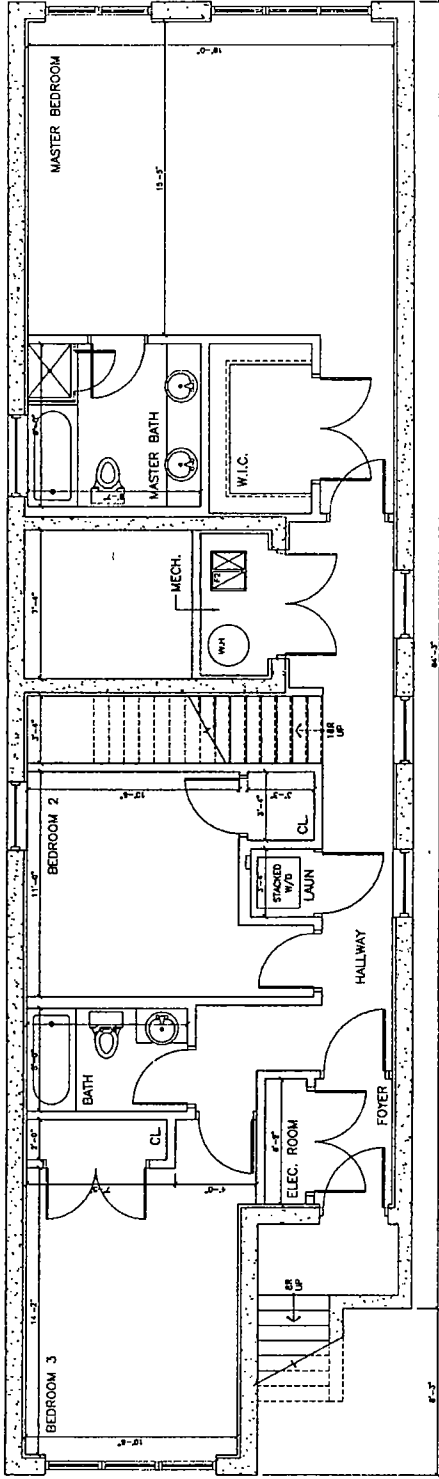
REVISIONS

NO.	DATE	DESCRIPTION
1	01/15/14	ISSUED FOR PERMITS
2	01/22/14	REVISIONS TO MECHANICAL/ELECTRICAL PLANS
3	01/29/14	REVISIONS TO STRUCTURAL PLANS
4	02/05/14	REVISIONS TO MECHANICAL/ELECTRICAL PLANS
5	02/12/14	REVISIONS TO STRUCTURAL PLANS
6	02/19/14	REVISIONS TO MECHANICAL/ELECTRICAL PLANS
7	02/26/14	REVISIONS TO STRUCTURAL PLANS
8	03/05/14	REVISIONS TO MECHANICAL/ELECTRICAL PLANS
9	03/12/14	REVISIONS TO STRUCTURAL PLANS
10	03/19/14	REVISIONS TO MECHANICAL/ELECTRICAL PLANS
11	03/26/14	REVISIONS TO STRUCTURAL PLANS
12	04/02/14	REVISIONS TO MECHANICAL/ELECTRICAL PLANS
13	04/09/14	REVISIONS TO STRUCTURAL PLANS
14	04/16/14	REVISIONS TO MECHANICAL/ELECTRICAL PLANS
15	04/23/14	REVISIONS TO STRUCTURAL PLANS
16	04/30/14	REVISIONS TO MECHANICAL/ELECTRICAL PLANS
17	05/07/14	REVISIONS TO STRUCTURAL PLANS
18	05/14/14	REVISIONS TO MECHANICAL/ELECTRICAL PLANS
19	05/21/14	REVISIONS TO STRUCTURAL PLANS
20	05/28/14	REVISIONS TO MECHANICAL/ELECTRICAL PLANS
21	06/04/14	REVISIONS TO STRUCTURAL PLANS
22	06/11/14	REVISIONS TO MECHANICAL/ELECTRICAL PLANS
23	06/18/14	REVISIONS TO STRUCTURAL PLANS
24	06/25/14	REVISIONS TO MECHANICAL/ELECTRICAL PLANS
25	07/02/14	REVISIONS TO STRUCTURAL PLANS
26	07/09/14	REVISIONS TO MECHANICAL/ELECTRICAL PLANS
27	07/16/14	REVISIONS TO STRUCTURAL PLANS
28	07/23/14	REVISIONS TO MECHANICAL/ELECTRICAL PLANS
29	07/30/14	REVISIONS TO STRUCTURAL PLANS
30	08/06/14	REVISIONS TO MECHANICAL/ELECTRICAL PLANS
31	08/13/14	REVISIONS TO STRUCTURAL PLANS
32	08/20/14	REVISIONS TO MECHANICAL/ELECTRICAL PLANS
33	08/27/14	REVISIONS TO STRUCTURAL PLANS
34	09/03/14	REVISIONS TO MECHANICAL/ELECTRICAL PLANS
35	09/10/14	REVISIONS TO STRUCTURAL PLANS
36	09/17/14	REVISIONS TO MECHANICAL/ELECTRICAL PLANS
37	09/24/14	REVISIONS TO STRUCTURAL PLANS
38	10/01/14	REVISIONS TO MECHANICAL/ELECTRICAL PLANS
39	10/08/14	REVISIONS TO STRUCTURAL PLANS
40	10/15/14	REVISIONS TO MECHANICAL/ELECTRICAL PLANS
41	10/22/14	REVISIONS TO STRUCTURAL PLANS
42	10/29/14	REVISIONS TO MECHANICAL/ELECTRICAL PLANS
43	11/05/14	REVISIONS TO STRUCTURAL PLANS
44	11/12/14	REVISIONS TO MECHANICAL/ELECTRICAL PLANS
45	11/19/14	REVISIONS TO STRUCTURAL PLANS
46	11/26/14	REVISIONS TO MECHANICAL/ELECTRICAL PLANS
47	12/03/14	REVISIONS TO STRUCTURAL PLANS
48	12/10/14	REVISIONS TO MECHANICAL/ELECTRICAL PLANS
49	12/17/14	REVISIONS TO STRUCTURAL PLANS
50	12/24/14	REVISIONS TO MECHANICAL/ELECTRICAL PLANS

ARCHITECTS

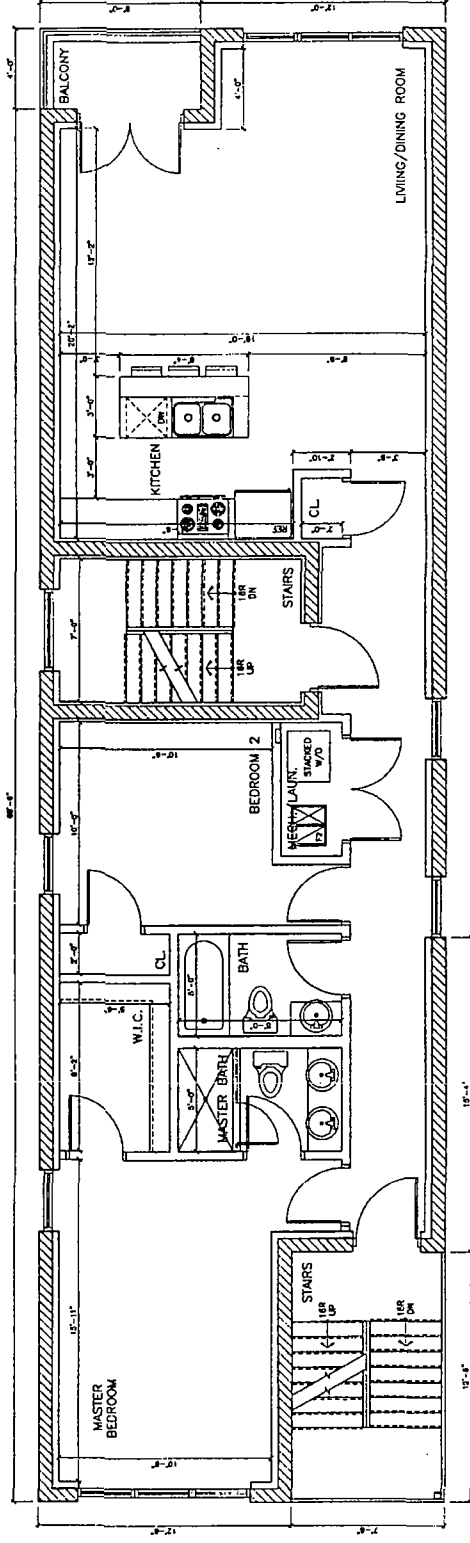
1514-18 W. DIVERSEY PKWY.
CHICAGO, IL 60614

PROJECT: 1514-18 W. DIVERSEY PKWY.
SHEET: T-1.0
DATE: 01/15/14

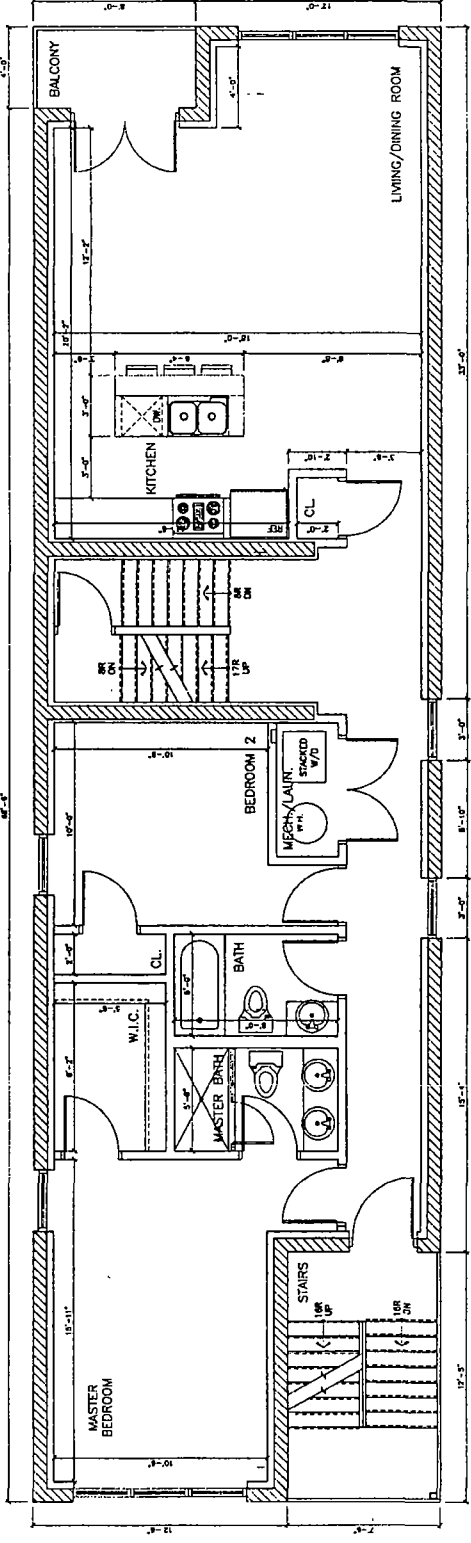


FINAL FOR PUBLICATION

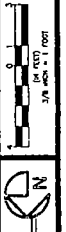
ARCHITECTS ARCHIT DCTS 172 N. DIVERSEY AVE CHICAGO, IL 60614 773.772.8844	ARCHITECTURAL ENGINEERING PLANNING SCALE: 1/8" = 1'-0" DATE: 11/11/11	1514 W. DIVERSEY PKWY. PROPOSED FLOOR PLANS	SYSTEMS CHECKED BY: J.E.A. DRAWN BY: J.E.A.	SHEET A1.1 OF 11



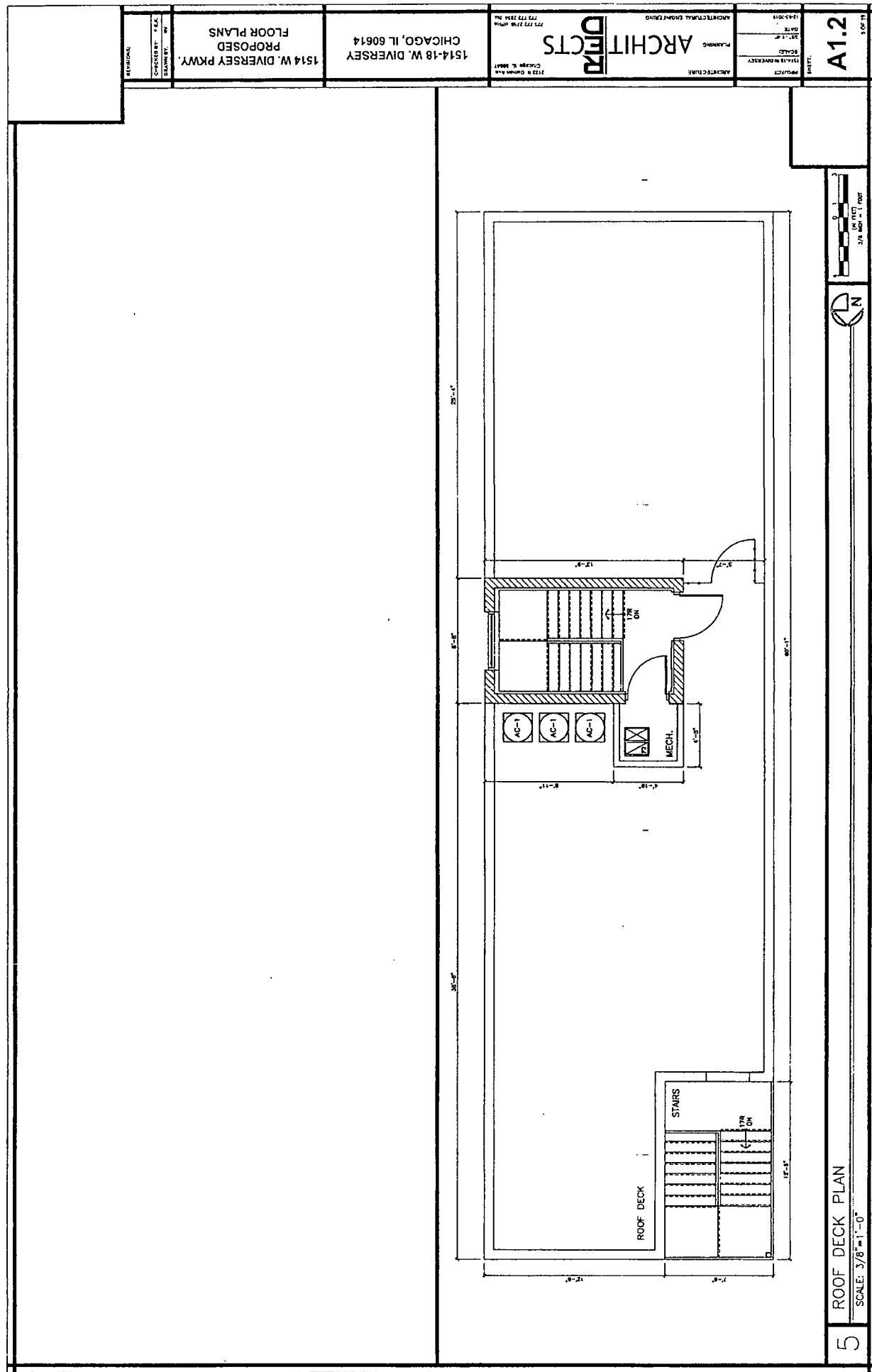
3 SECOND FLOOR PLAN
SCALE: 3/8" = 1'-0"



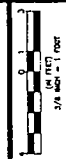
4 THIRD FLOOR PLAN
SCALE: 3/8" = 1'-0"



FINAL FOR PUBLICATION



5 ROOF DECK PLAN
SCALE: 3/8" = 1'-0"



SHEET: **A1.2**
1.06.12

PROJECT: 1514 W. DIVERSEY
DATE: 11-15-11
SCALE: 3/8" = 1'-0"

ARCHITECTURE: **ARCHITECTS**
2122 N. OLIVER AVE.
CHICAGO, IL 60614
ARCHITECTURAL GROUP, INC.
773.773.2344 FAX

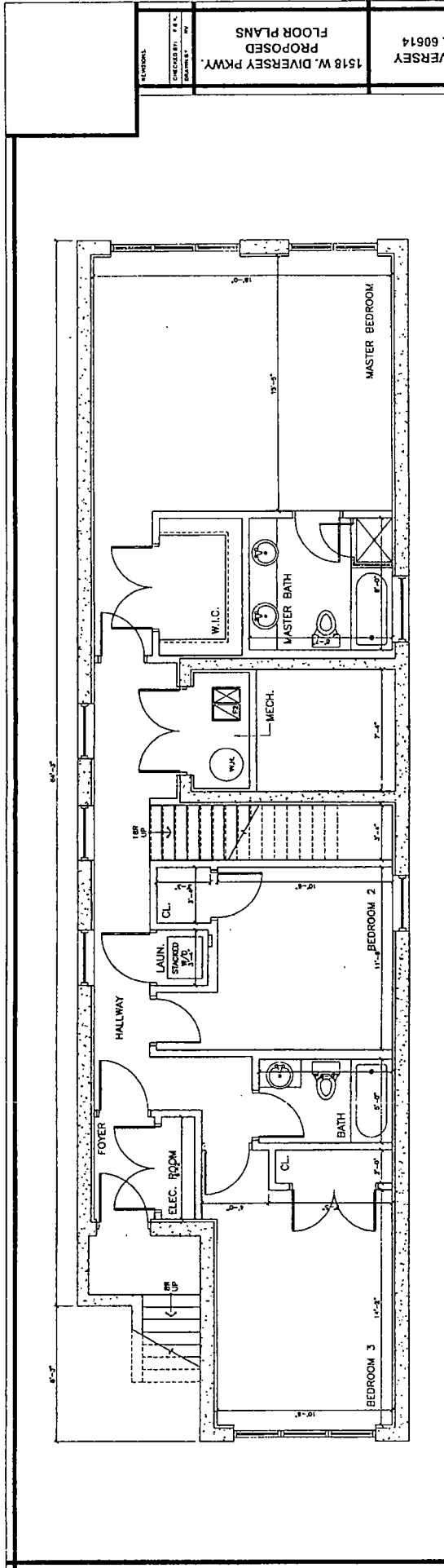
1514-18 W. DIVERSEY
CHICAGO, IL 60614

1514 W. DIVERSEY PKWY.
PROPOSED
FLOOR PLANS

CHECKED BY: T.E.C.
DRAWN BY: W.

DATE: 11-15-11

FINAL FOR PUBLICATION



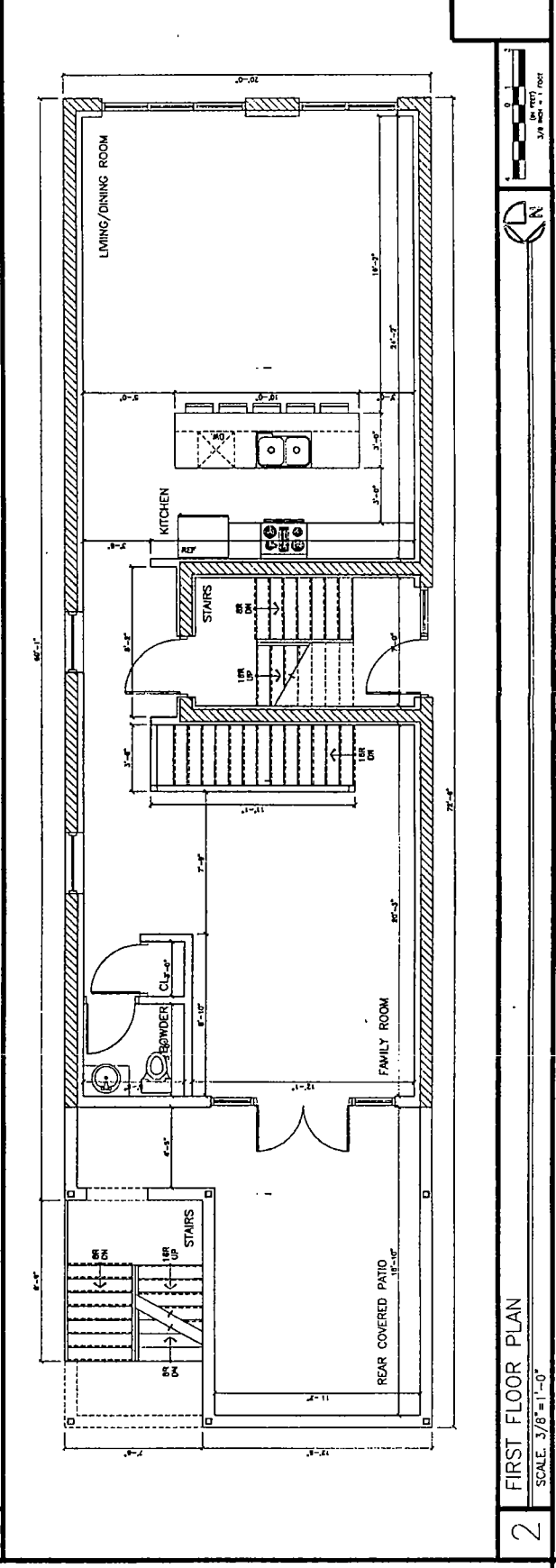
1 BASEMENT PLAN

SCALE: 3/8" = 1'-0"

1



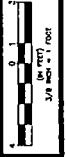
PROJECT:	1514-18 W. DIVERSEY
ARCHITECT:	ARCHITECTS
DATE:	12/22/10
SCALE:	AS SHOWN
PROJECT:	1514-18 W. DIVERSEY
ARCHITECT:	ARCHITECTS
DATE:	12/22/10
SCALE:	AS SHOWN
PROJECT:	1514-18 W. DIVERSEY
ARCHITECT:	ARCHITECTS
DATE:	12/22/10
SCALE:	AS SHOWN



2 FIRST FLOOR PLAN

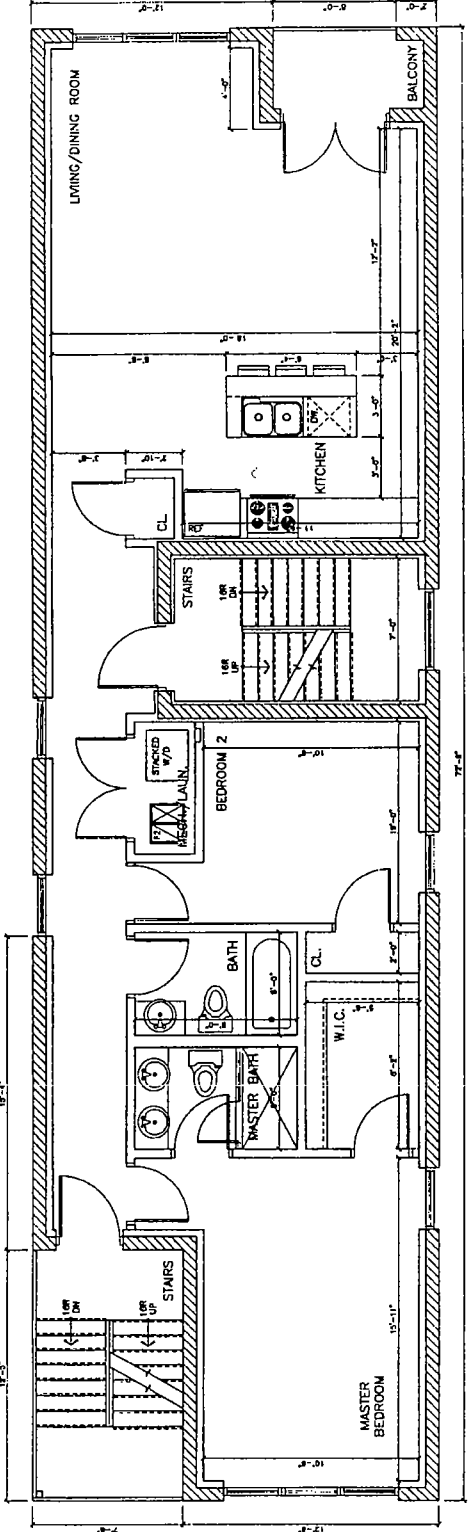
SCALE: 3/8" = 1'-0"

2

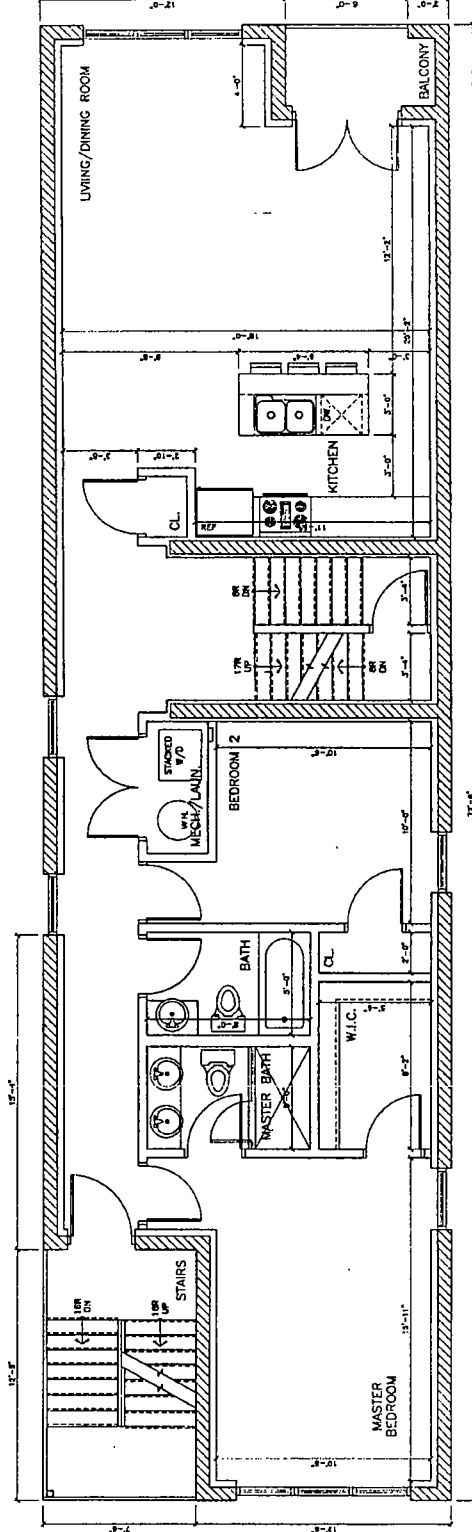


FINAL FOR PUBLICATION

PROJECT 1514-18 W. DIVERSEY PKWY. CHICAGO, IL 60614	ARCHITECTURE ARCHITECTS 712 N. KANAWA AVE. CHICAGO, IL 60649 773 736 6100 773 736 6101	PLANNING 1514-18 DIVERSEY CHICAGO, IL 60614	ARCHITECTURAL ENGINEERING 1514-18 DIVERSEY CHICAGO, IL 60614	SHEET A2.1 1 OF 2
DESIGNED BY F.L.N.	CHECKED BY F.L.N.	DRAWN BY F.L.N.	DIMENSIONS	

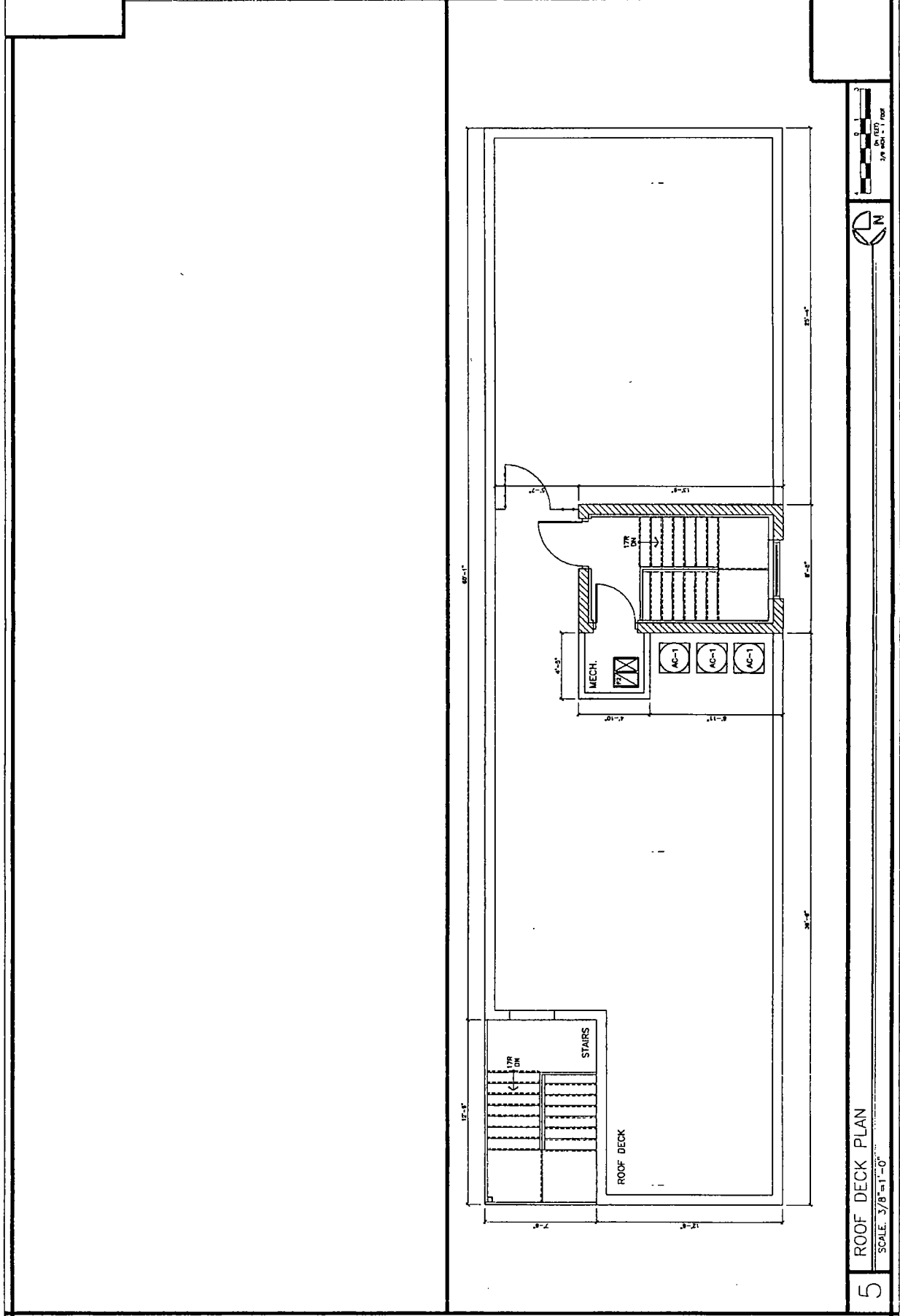


3 SECOND FLOOR PLAN
SCALE: 3/8" = 1'-0"

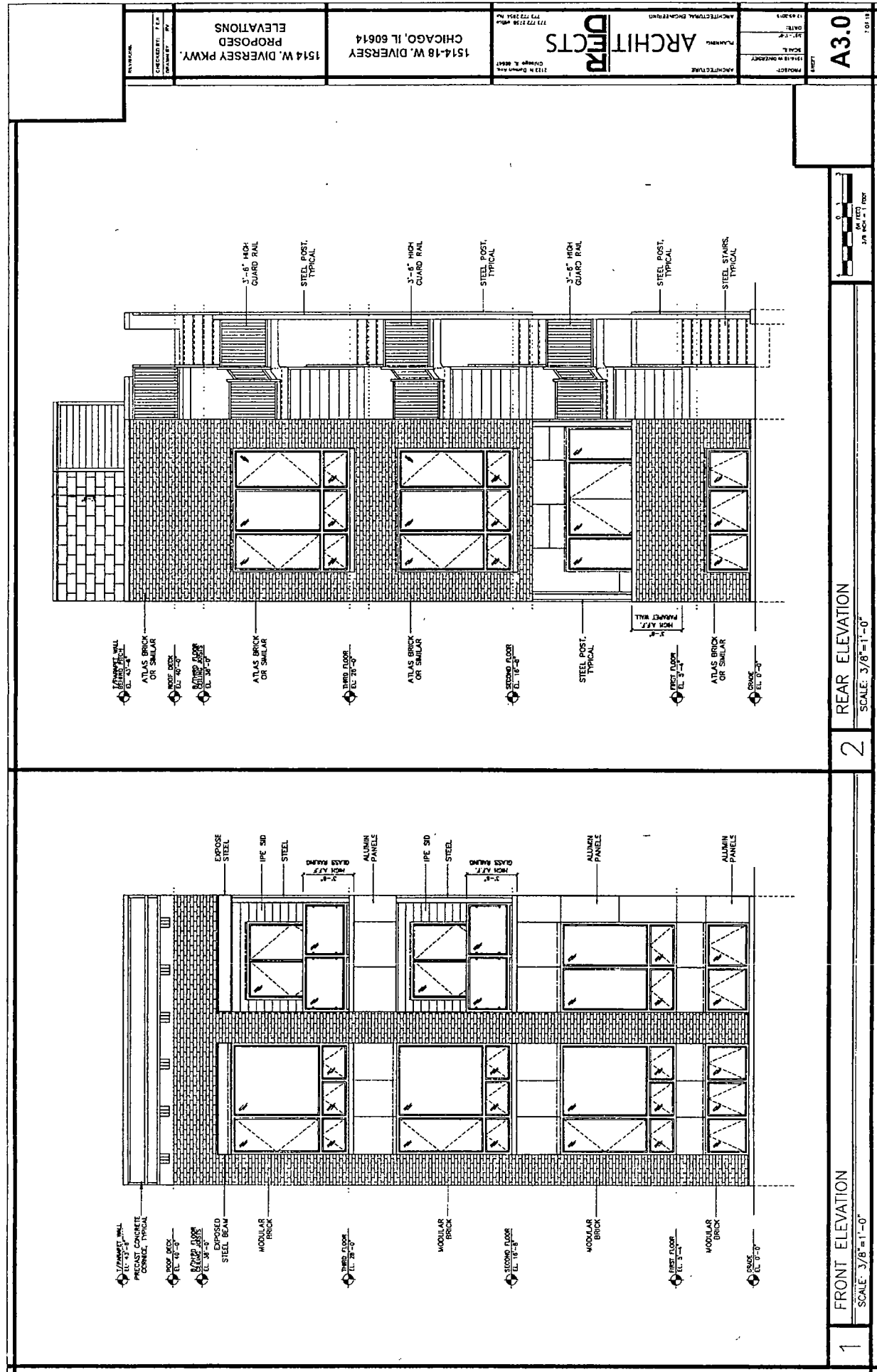


4 THIRD FLOOR PLAN
SCALE: 3/8" = 1'-0"

PROJECT 1514-18 W. DIVERSEY	DATE	14-1-2011
	SCALE	3/8" = 1'-0"
ARCHITECTURE	PLANNING	ARCHITECTURAL ENGINEERING
ARCHITECTS		
2112 N. DUNSMUIR CHICAGO, IL 60647 773.772.2200 773.772.2204 FAX		
1514-18 W. DIVERSEY CHICAGO, IL 60614		
1518 W. DIVERSEY PKWY. PROPOSED FLOOR PLANS		
REVISIONS	DATE	BY



5 ROOF DECK PLAN
SCALE: 3/8" = 1'-0"



1/4" PANEL WALL
 EL. 13'-0"
 PRECAST CONCRETE
 CORNER, TYPICAL
 ROOF DECK
 EL. 12'-0"
 SECOND FLOOR
 EL. 11'-0"
 EXPOSED
 STEEL BEAM
 MODULAR
 BRICK
 3'-6" HIGH GLASS RAIN
 ALUMIN
 PANELS
 IPE SID
 STEEL
 3'-6" HIGH GLASS RAIN
 ALUMIN
 PANELS
 IPE SID
 STEEL
 MODULAR
 BRICK
 SECOND FLOOR
 EL. 11'-0"
 MODULAR
 BRICK
 SECOND FLOOR
 EL. 11'-0"
 MODULAR
 BRICK
 SECOND FLOOR
 EL. 11'-0"
 MODULAR
 BRICK
 SECOND FLOOR
 EL. 11'-0"
 CRUISE
 EL. 10'-0"

1/4" PANEL WALL
 EL. 13'-0"
 ATLAS BRICK
 ON SIMILAR
 ROOF DECK
 EL. 12'-0"
 SECOND FLOOR
 EL. 11'-0"
 ATLAS BRICK
 ON SIMILAR
 3'-6" HIGH
 GUARD RAIL
 STEEL POST,
 TYPICAL
 3'-6" HIGH
 GUARD RAIL
 STEEL POST,
 TYPICAL
 3'-6" HIGH
 GUARD RAIL
 STEEL POST,
 TYPICAL
 3'-6" HIGH
 GUARD RAIL
 STEEL POST,
 TYPICAL
 3'-6" HIGH
 GUARD RAIL
 STEEL POST,
 TYPICAL
 STEEL STAIRS,
 TYPICAL
 SECOND FLOOR
 EL. 11'-0"
 STEEL POST,
 TYPICAL
 3'-6" HIGH
 GUARD RAIL
 STEEL POST,
 TYPICAL
 ATLAS BRICK
 ON SIMILAR
 CRUISE
 EL. 10'-0"

1 FRONT ELEVATION
SCALE: 3/8" = 1'-0"

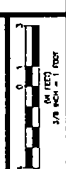
2 REAR ELEVATION
SCALE: 3/8" = 1'-0"

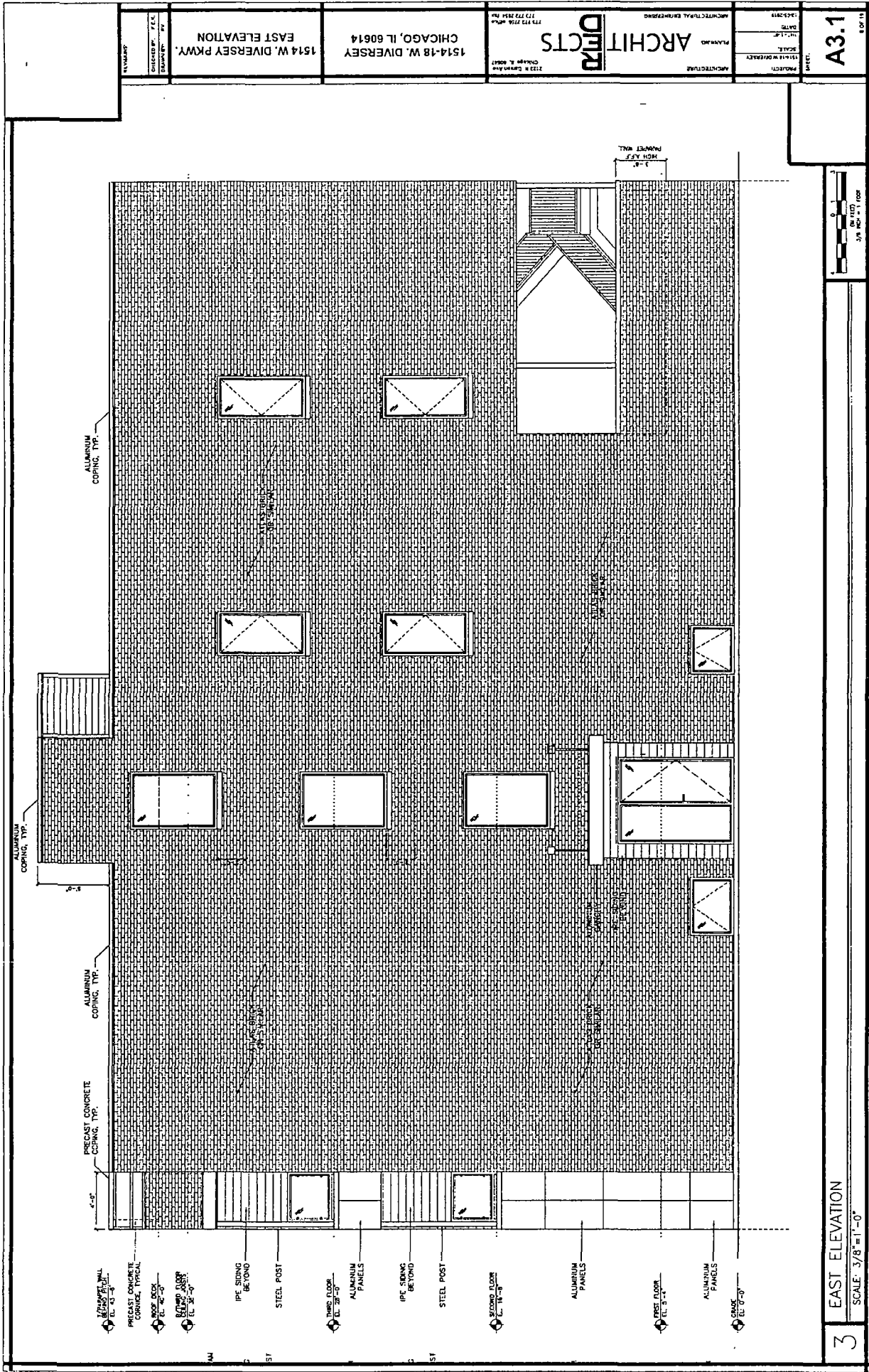
A3.0
1 OF 10

PROJECT
 1514-18 W. DIVERSEY
 ARCHITECTURE
 PLANNING
 ARCHITECTURAL ENGINEERING
 ARCHITECTS
 1128 N. OLIVER ST.
 CHICAGO, IL 60610
 773.772.3232 FAX
 773.772.3232 TEL

1514-18 W. DIVERSEY
 CHICAGO, IL 60614
 PROPOSED
 ELEVATIONS
 1514 W. DIVERSEY PKWY.

CHECKED BY: J.P.
 DRAWN BY: J.P.
 DATE: 11/11/11

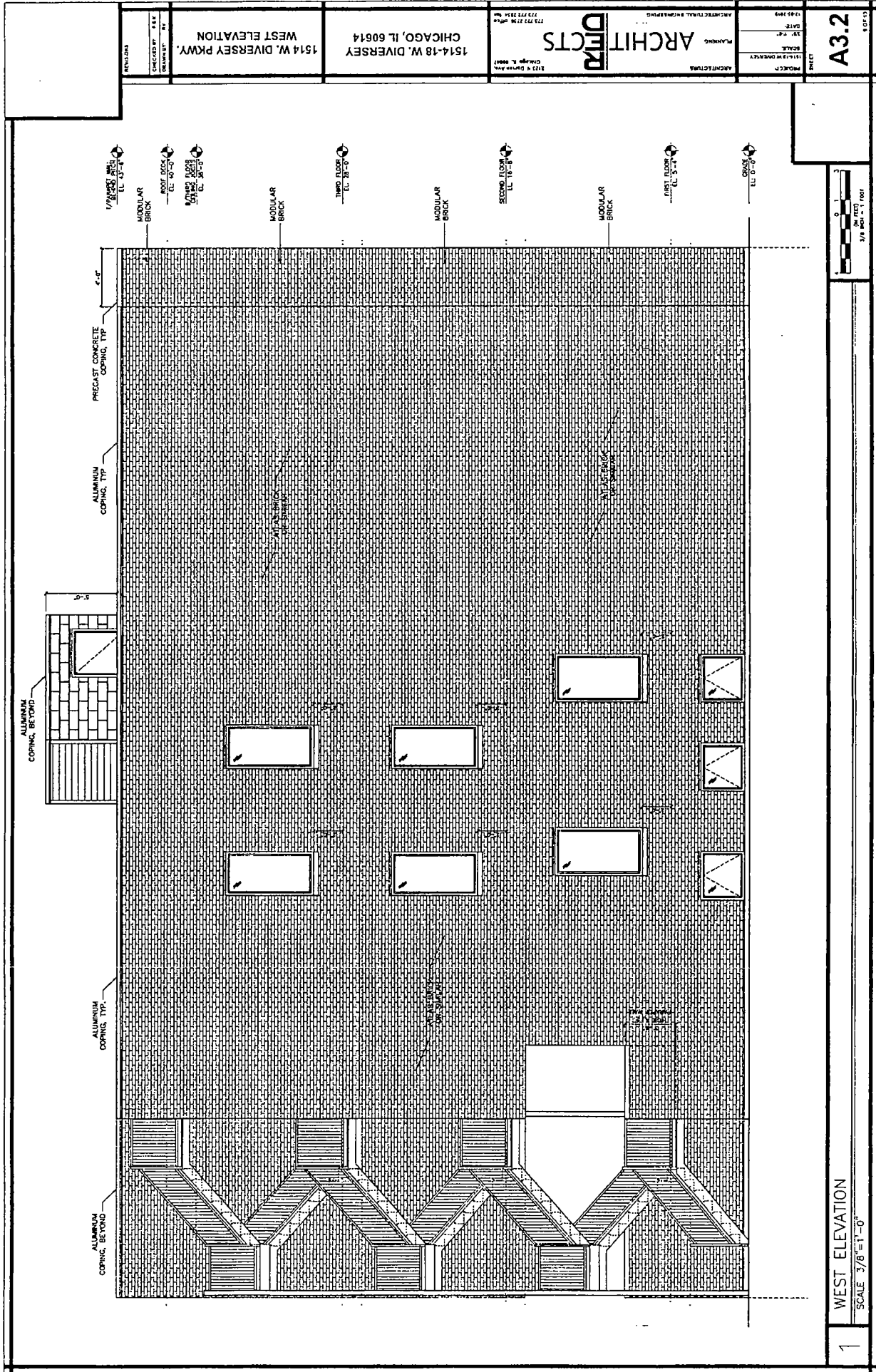




PROJECT: 1514 W DIVERSEY	ARCHITECT: ARCHITECTURAL EMPLOYERS	DATE: 7/13/10	SCALE: 3/8" = 1'-0"	SHEET: A3.1
CLIENT: 1514 W DIVERSEY PKWY, CHICAGO, IL 60614	ARCHITECT: DDM ARCHITECTS, 2122 N CANTON AVE, CHICAGO, IL 60614	DATE: 7/13/10		
DESIGNED BY: J.A.C.	DRAWN BY: J.A.C.	CHECKED BY: J.A.C.		

3 EAST ELEVATION
SCALE: 3/8" = 1'-0"

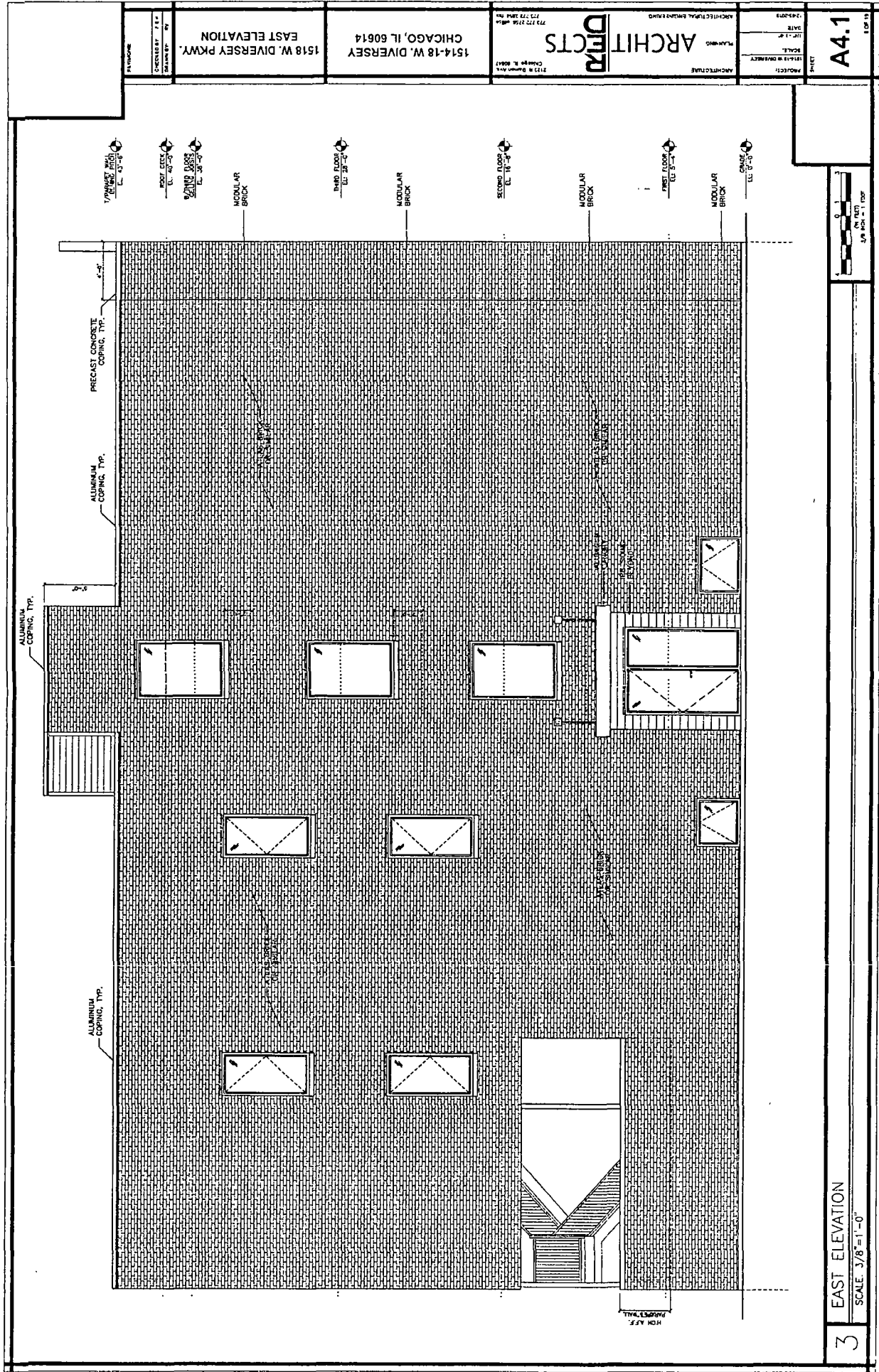
FINAL FOR PUBLICATION



PROJECT 1514 W. DIVERSEY	ARCHITECT ARCHITECTS	DATE 12-12-14	BRIEF A3.2
1514 W. DIVERSEY PKWY. CHICAGO, IL 60614	ARCHITECTURAL ENGINEERING 212 N. DUNN AVE. CHICAGO, IL 60610 773.773.2114	SCALE 3/8" = 1'-0"	10/10
DESIGNED BY CHECKED BY DRAWN BY			

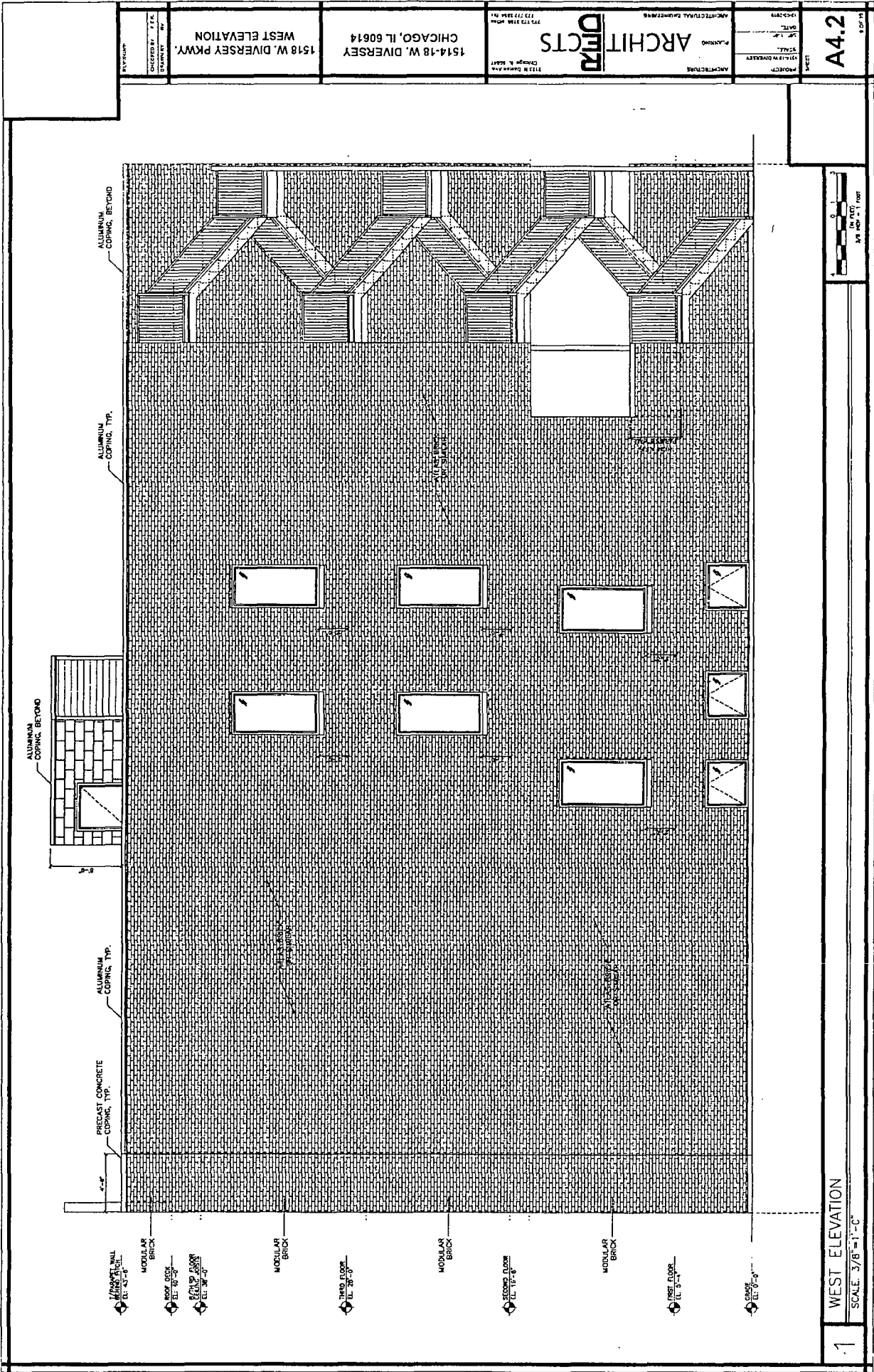
1 WEST ELEVATION
SCALE 3/8" = 1'-0"

DRAWING FOR PUBLICATION



PROJECT: 1518 W. DIVERSEY	ARCHITECT: ARCHITECTURAL ENGINEERING	DATE: 7-1-01	PROJECT: A4.1
1518 W. DIVERSEY PKWY. CHICAGO, IL 60614	715 N. BROADWAY CHICAGO, IL 60611	SCALE: 3/8"=1'-0"	1 OF 11
DESIGNED BY: [blank]	ARCHITECT: ARCHITECTS		
DRAWN BY: [blank]			

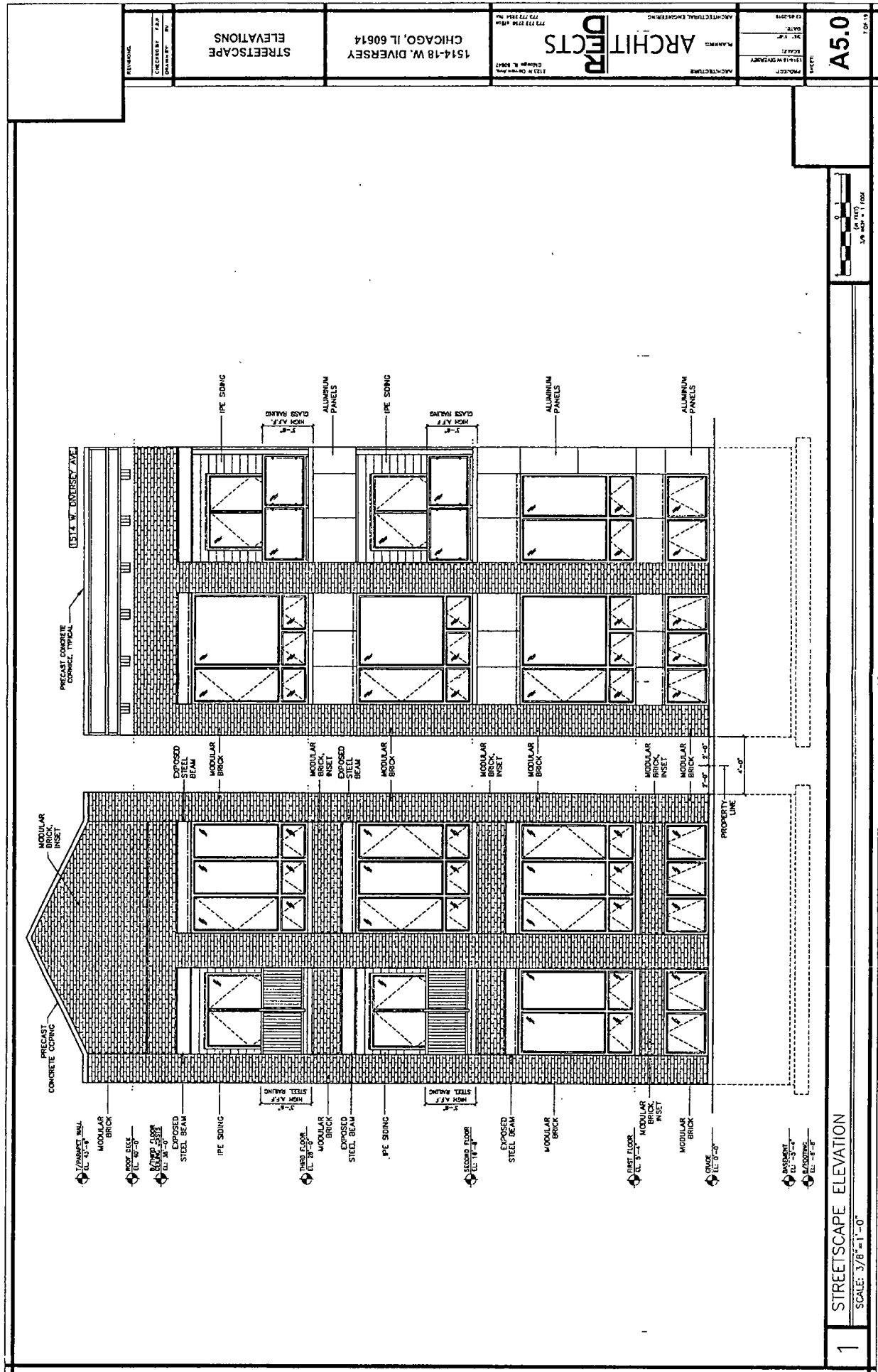
3 EAST ELEVATION
SCALE 3/8"=1'-0"



WEST ELEVATION
SCALE: 3/8"=1'-0"

1

PROJECT ARCHITECTURE 1514-18 W. DIVERSEY PKWY. CHICAGO, IL 60614	ARCHITECT ARCHITECTURAL ENGINEERS 1514-18 W. DIVERSEY PKWY. CHICAGO, IL 60614	DATE 11/21/18	SHEET A4.2



1 STREETScape ELEVATION
SCALE: 3/8" = 1'-0"