



# City of Chicago



Or2020-119

Office of the City Clerk

## Document Tracking Sheet

<b>Meeting Date:</b>	4/22/2020
<b>Sponsor(s):</b>	Napolitano (41)
<b>Type:</b>	Order
<b>Title:</b>	Issuance of permits for sign(s)/signboard(s) at 8755 W Higgins Rd
<b>Committee(s) Assignment:</b>	Committee on Zoning, Landmarks and Building Standards

CITY COUNCIL  
COMMITTEE ON ZONING, LANDMARKS AND BUILDING STANDARDS

COUNCIL ORDER

RE: Approval of sign over 100 square feet in area or over 24 feet above grade

ORDERED, that the City Council hereby approves the following sign application submitted by:

Applicant: Sedgwick

(\* The Applicant is the owner of the real property or the business tenant of the real property. Do not list the sign contractor, sign erector, sign company or advertising entity in the above space.)

This Order approves the following sign in accordance with Municipal Code of Chicago Section 13-20-680:

Address of Sign: 8755 W Higgins Road Chicago, IL 60631

Zoning District: PD340

DOB Sign Permit Application #: \_\_\_\_\_

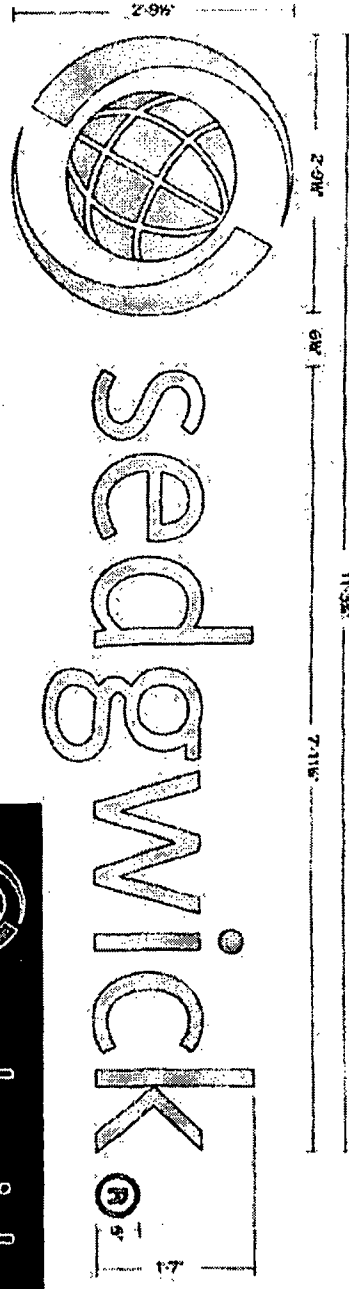
Sign Details:

1. On-premise  OR Off-premise \_\_\_\_\_
2. Static sign  OR Dynamic-Image display sign \_\_\_\_\_
3. Number of sign faces 1
4. Projecting over the public way No (Yes or No) If yes, Public Way Use #: \_\_\_\_\_
5. Dimensions: Length 11 feet 3 inches Height 2 feet 9 inches  
Total square feet in area: 31 feet \_\_\_\_\_ inches
6. Height above grade: 134 feet \_\_\_\_\_ inches
7. Elevation (side of building or lot where the sign will be erected): West
8. Name of Sign Contractor/Erector: Parvin-Clauss Sign Co

To be legal, such sign shall comply with all provisions of Title 17 of the Chicago Municipal Code ("Zoning Ordinance") and all other provisions of the Municipal Code governing the permitting, construction and maintenance and removal of signs and sign structures. Failure of the applicant and the applicant's successors to comply shall be grounds for invalidation or revocation of the sign permit.

  
Alderman

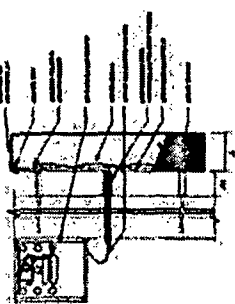
4/15/11  
Ward



Night View

- 1) 1/2" 3" Replicated Bronze Diamond Mesh & Logo Letters & Logo - Anodized Aluminum Painted w/ #1342 Brushed Aluminum - Single Sign Finish
- 2) White Polycarbonate
- 3) Back - White Polycarbonate
- 4) Mount - 1 1/2" x 1/2" x 1/2" Aluminum
- 5) Back - White Polycarbonate
- 6) Mount - 1 1/2" x 1/2" x 1/2" Aluminum
- 7) Back - White Polycarbonate
- 8) Mount - 1 1/2" x 1/2" x 1/2" Aluminum
- 9) Back - White Polycarbonate
- 10) Mount - 1 1/2" x 1/2" x 1/2" Aluminum
- 11) Back - White Polycarbonate
- 12) Mount - 1 1/2" x 1/2" x 1/2" Aluminum
- 13) Back - White Polycarbonate
- 14) Mount - 1 1/2" x 1/2" x 1/2" Aluminum
- 15) Back - White Polycarbonate
- 16) Mount - 1 1/2" x 1/2" x 1/2" Aluminum
- 17) Back - White Polycarbonate
- 18) Mount - 1 1/2" x 1/2" x 1/2" Aluminum
- 19) Back - White Polycarbonate
- 20) Mount - 1 1/2" x 1/2" x 1/2" Aluminum
- 21) Back - White Polycarbonate
- 22) Mount - 1 1/2" x 1/2" x 1/2" Aluminum
- 23) Back - White Polycarbonate
- 24) Mount - 1 1/2" x 1/2" x 1/2" Aluminum
- 25) Back - White Polycarbonate
- 26) Mount - 1 1/2" x 1/2" x 1/2" Aluminum
- 27) Back - White Polycarbonate
- 28) Mount - 1 1/2" x 1/2" x 1/2" Aluminum
- 29) Back - White Polycarbonate
- 30) Mount - 1 1/2" x 1/2" x 1/2" Aluminum
- 31) Back - White Polycarbonate
- 32) Mount - 1 1/2" x 1/2" x 1/2" Aluminum
- 33) Back - White Polycarbonate
- 34) Mount - 1 1/2" x 1/2" x 1/2" Aluminum
- 35) Back - White Polycarbonate
- 36) Mount - 1 1/2" x 1/2" x 1/2" Aluminum
- 37) Back - White Polycarbonate
- 38) Mount - 1 1/2" x 1/2" x 1/2" Aluminum
- 39) Back - White Polycarbonate
- 40) Mount - 1 1/2" x 1/2" x 1/2" Aluminum
- 41) Back - White Polycarbonate
- 42) Mount - 1 1/2" x 1/2" x 1/2" Aluminum
- 43) Back - White Polycarbonate
- 44) Mount - 1 1/2" x 1/2" x 1/2" Aluminum
- 45) Back - White Polycarbonate
- 46) Mount - 1 1/2" x 1/2" x 1/2" Aluminum
- 47) Back - White Polycarbonate
- 48) Mount - 1 1/2" x 1/2" x 1/2" Aluminum
- 49) Back - White Polycarbonate
- 50) Mount - 1 1/2" x 1/2" x 1/2" Aluminum
- 51) Back - White Polycarbonate
- 52) Mount - 1 1/2" x 1/2" x 1/2" Aluminum
- 53) Back - White Polycarbonate
- 54) Mount - 1 1/2" x 1/2" x 1/2" Aluminum
- 55) Back - White Polycarbonate
- 56) Mount - 1 1/2" x 1/2" x 1/2" Aluminum
- 57) Back - White Polycarbonate
- 58) Mount - 1 1/2" x 1/2" x 1/2" Aluminum
- 59) Back - White Polycarbonate
- 60) Mount - 1 1/2" x 1/2" x 1/2" Aluminum
- 61) Back - White Polycarbonate
- 62) Mount - 1 1/2" x 1/2" x 1/2" Aluminum
- 63) Back - White Polycarbonate
- 64) Mount - 1 1/2" x 1/2" x 1/2" Aluminum
- 65) Back - White Polycarbonate
- 66) Mount - 1 1/2" x 1/2" x 1/2" Aluminum
- 67) Back - White Polycarbonate
- 68) Mount - 1 1/2" x 1/2" x 1/2" Aluminum
- 69) Back - White Polycarbonate
- 70) Mount - 1 1/2" x 1/2" x 1/2" Aluminum
- 71) Back - White Polycarbonate
- 72) Mount - 1 1/2" x 1/2" x 1/2" Aluminum
- 73) Back - White Polycarbonate
- 74) Mount - 1 1/2" x 1/2" x 1/2" Aluminum
- 75) Back - White Polycarbonate
- 76) Mount - 1 1/2" x 1/2" x 1/2" Aluminum
- 77) Back - White Polycarbonate
- 78) Mount - 1 1/2" x 1/2" x 1/2" Aluminum
- 79) Back - White Polycarbonate
- 80) Mount - 1 1/2" x 1/2" x 1/2" Aluminum
- 81) Back - White Polycarbonate
- 82) Mount - 1 1/2" x 1/2" x 1/2" Aluminum
- 83) Back - White Polycarbonate
- 84) Mount - 1 1/2" x 1/2" x 1/2" Aluminum
- 85) Back - White Polycarbonate
- 86) Mount - 1 1/2" x 1/2" x 1/2" Aluminum
- 87) Back - White Polycarbonate
- 88) Mount - 1 1/2" x 1/2" x 1/2" Aluminum
- 89) Back - White Polycarbonate
- 90) Mount - 1 1/2" x 1/2" x 1/2" Aluminum
- 91) Back - White Polycarbonate
- 92) Mount - 1 1/2" x 1/2" x 1/2" Aluminum
- 93) Back - White Polycarbonate
- 94) Mount - 1 1/2" x 1/2" x 1/2" Aluminum
- 95) Back - White Polycarbonate
- 96) Mount - 1 1/2" x 1/2" x 1/2" Aluminum
- 97) Back - White Polycarbonate
- 98) Mount - 1 1/2" x 1/2" x 1/2" Aluminum
- 99) Back - White Polycarbonate
- 100) Mount - 1 1/2" x 1/2" x 1/2" Aluminum

NOTE: FIELD SURVEY REQUIRED PRIOR TO INSTALLATION



© Copyright 2018 by Parvix-Claus Sign Co.

**Parvix-Claus**  
SIGN COMPANY



8725 W. Higgins Road  
Chicago, IL

**CUSTOMER APPROVAL:**

**APPROVED MATERIAL:**

**INSTALLATION:**  
Matt Sedgwick / JB

**DATE:**  
7/22/19

**SCALE:**  
1" = 1'

**SHEET NO.:**  
1 of 1

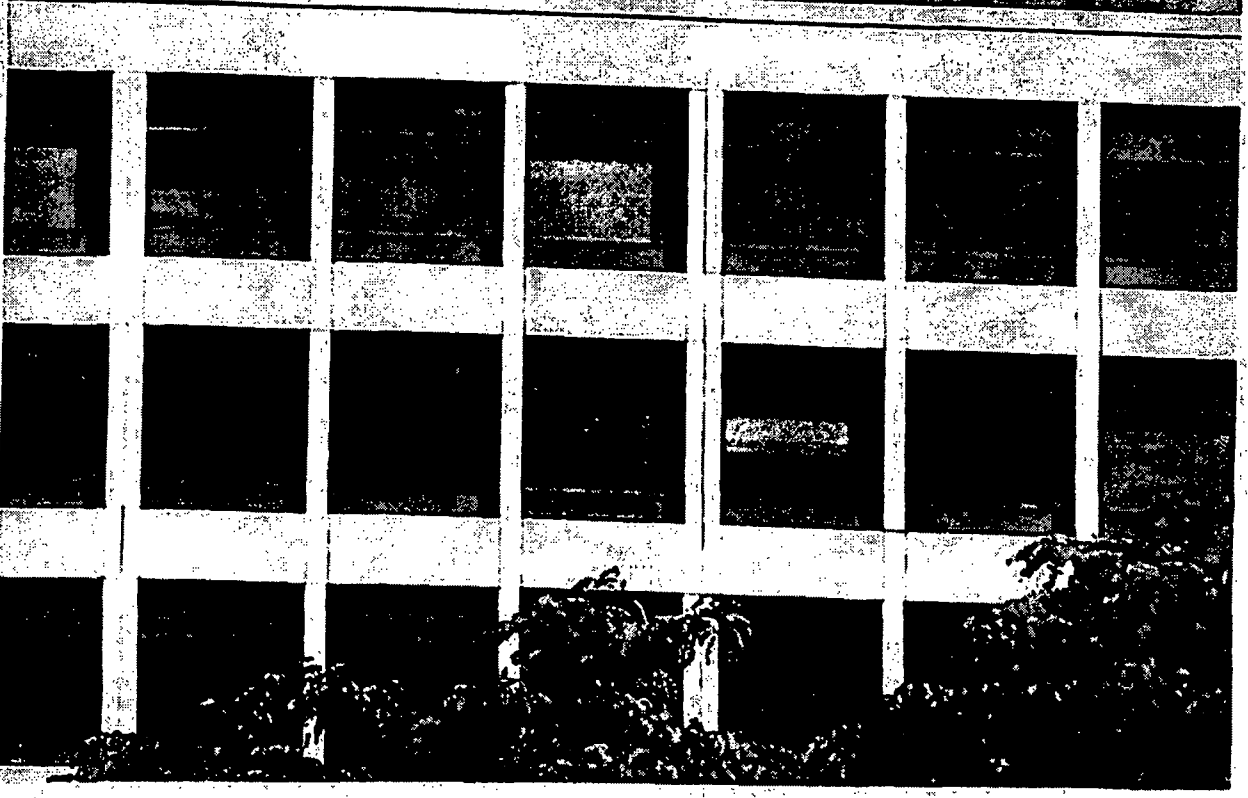
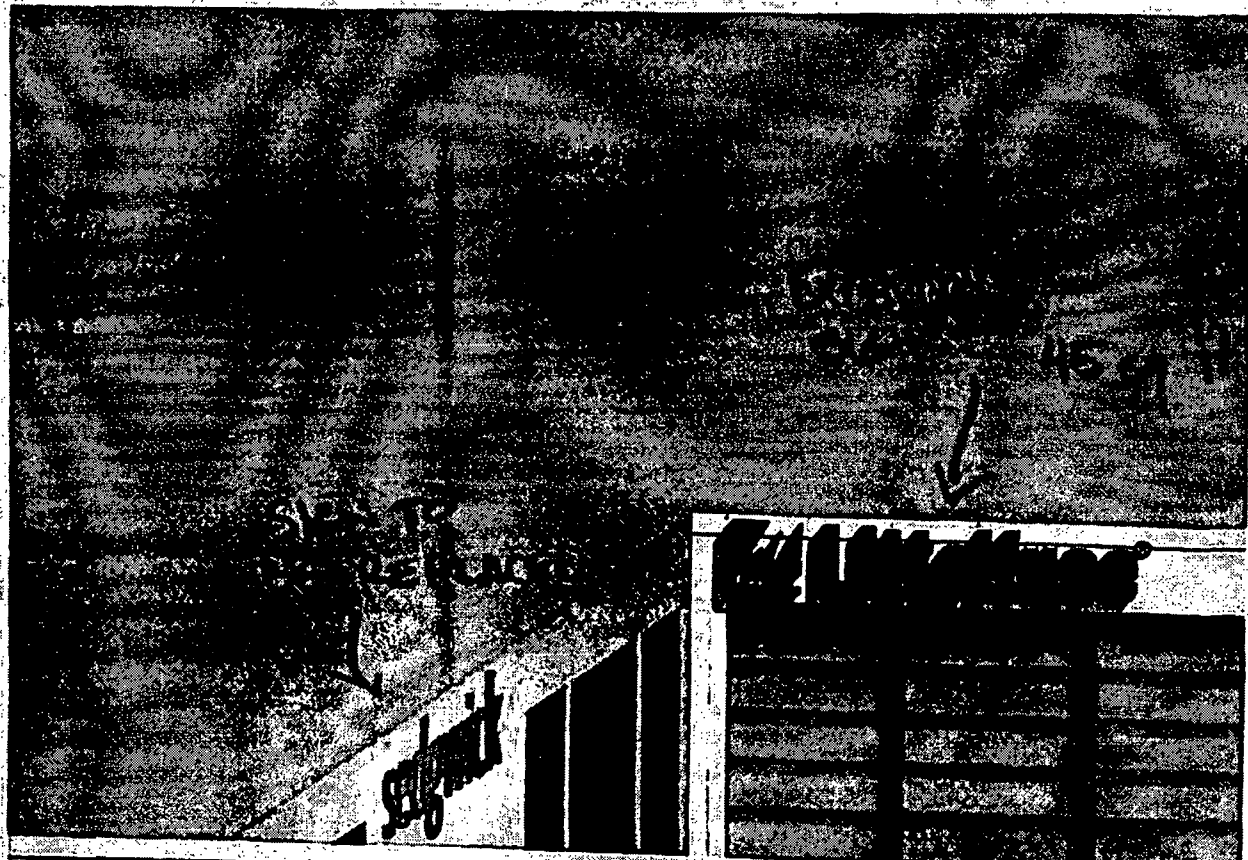
**WORK ORDER:**  
62219

**CALL NUMBER:**  
50422419

**REVISIONS:**

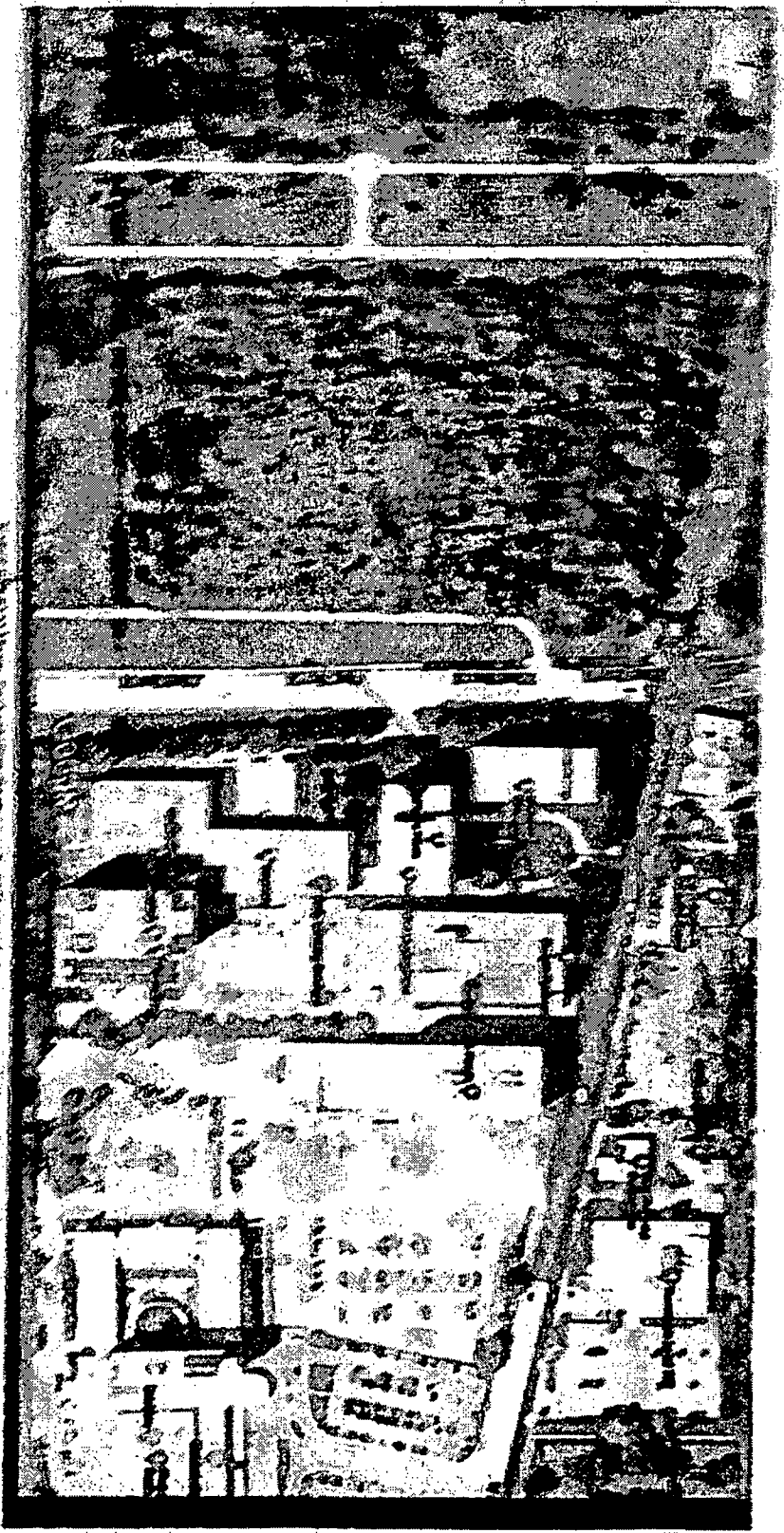
7/15/19 - add "W" mark

This sign is intended to be installed in accordance with the International Building Code and all applicable local codes and regulations. The sign company is not responsible for any structural or electrical issues that may arise during or after installation.



County Maps Early Working Section

Early Working Section - Georgia Maps



1972  
 Early Working Section - Georgia Maps  
 CANTON  
 COLUMBIA  
 1972

1972  
 Early Working Section - Georgia Maps  
 CANTON  
 COLUMBIA  
 1972