



# City of Chicago



O2019-903

Office of the City Clerk

## Document Tracking Sheet

<b>Meeting Date:</b>	1/23/2019
<b>Sponsor(s):</b>	Reilly (42)
<b>Type:</b>	Ordinance
<b>Title:</b>	Grant(s) of privilege in public way for Sixty West Erie Condo Assn. - caissons
<b>Committee(s) Assignment:</b>	Committee on Transportation and Public Way

ORDINANCE  
SIXTY WEST ERIE CONDOMINIUM ASSOCIATION  
Acct No. 332820 - 1  
Permit No. 1137175

*Be It Ordained by the City Council of the City of Chicago*

SECTION 1. Permission and authority are hereby given and granted to SIXTY WEST ERIE CONDOMINIUM ASSOCIATION, upon the terms and subject to the conditions of this ordinance to maintain and use, as now constructed, four (4) Caisson(s) under the public right-of-way adjacent to its premises known as 60 W. Erie St..

Said Caisson(s) at W Erie St. measure(s):

One (1) at one (1) foot in length, and seven (7) feet in width for a total of seven (7) square feet.

Said Caisson(s) at E. Public Alley measure(s).

One (1) at one (1) foot in length, and forty-eight point eight eight (48.88) feet in width for a total of forty-eight point eight eight (48.88) square feet.

Said Caisson(s) at W Public Alley measure(s):

One (1) at one (1) foot in length, and forty-eight point eight eight (48.88) feet in width for a total of forty-eight point eight eight (48.88) square feet.

Said Caisson(s) at N Public Alley measure(s).

One (1) at one (1) foot in length, and ten point five (10.5) feet in width for a total of ten point five (10.5) square feet

The location of said privilege shall be as shown on prints kept on file with the Department of Business Affairs and Consumer Protection and the Office of the City Clerk.

Said privilege shall be constructed in accordance with plans and specifications approved by the Department of Planning and Development and Department of Transportation (Office of Underground Coordination).

This grant of privilege in the public way shall be subject to the provisions of Section 10-28-015 and all other required provisions of the Municipal Code of Chicago.

The grantee shall pay to the City of Chicago as compensation for the privilege #1137175 herein granted the sum of four hundred (\$400.00) per annum in advance.

A 25% penalty will be added for payments received after due date.

The permit holder agrees to hold the City of Chicago harmless for any damage, relocation or replacement costs associated with damage, relocation or removal of private property caused by the City performing work in the public way.

Authority herein given and granted for a period of five (5) years from and after 10/08/2018

Alderman \_\_\_\_\_

Brendan Reilly 42nd Ward

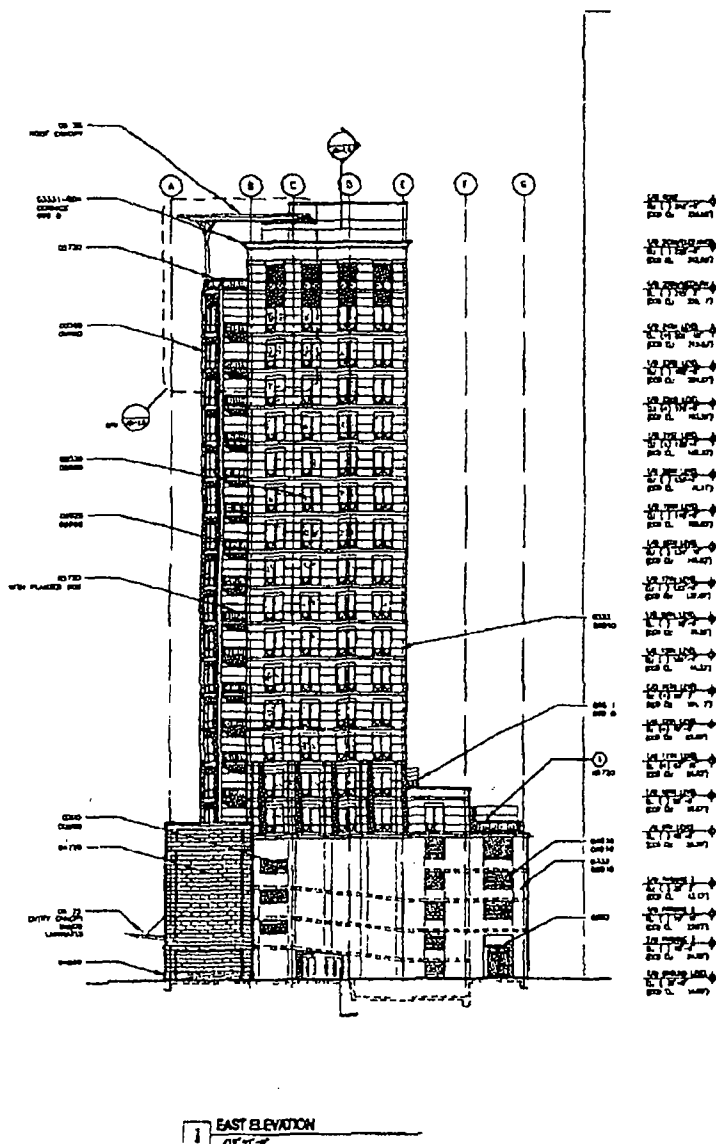


05/30/2008 14 16 FAX 312 745 2958

DBAL PUBLIC WAY USE

009/024

60 W ERIE CAISSON



### GENERAL SHEET NOTES

### REFERENCE KEYNOTES

- 0001 OVER LAY POWER AND CABLE
- 0002 OVER LAY POWER AND CABLE
- 0003 OVER LAY POWER AND CABLE
- 0004 OVER LAY POWER AND CABLE
- 0005 OVER LAY POWER AND CABLE
- 0006 OVER LAY POWER AND CABLE
- 0007 OVER LAY POWER AND CABLE
- 0008 OVER LAY POWER AND CABLE
- 0009 OVER LAY POWER AND CABLE
- 0010 OVER LAY POWER AND CABLE
- 0011 OVER LAY POWER AND CABLE
- 0012 OVER LAY POWER AND CABLE
- 0013 OVER LAY POWER AND CABLE
- 0014 OVER LAY POWER AND CABLE
- 0015 OVER LAY POWER AND CABLE
- 0016 OVER LAY POWER AND CABLE
- 0017 OVER LAY POWER AND CABLE
- 0018 OVER LAY POWER AND CABLE
- 0019 OVER LAY POWER AND CABLE
- 0020 OVER LAY POWER AND CABLE
- 0021 OVER LAY POWER AND CABLE
- 0022 OVER LAY POWER AND CABLE
- 0023 OVER LAY POWER AND CABLE
- 0024 OVER LAY POWER AND CABLE
- 0025 OVER LAY POWER AND CABLE
- 0026 OVER LAY POWER AND CABLE
- 0027 OVER LAY POWER AND CABLE
- 0028 OVER LAY POWER AND CABLE
- 0029 OVER LAY POWER AND CABLE
- 0030 OVER LAY POWER AND CABLE
- 0031 OVER LAY POWER AND CABLE
- 0032 OVER LAY POWER AND CABLE
- 0033 OVER LAY POWER AND CABLE
- 0034 OVER LAY POWER AND CABLE
- 0035 OVER LAY POWER AND CABLE
- 0036 OVER LAY POWER AND CABLE
- 0037 OVER LAY POWER AND CABLE
- 0038 OVER LAY POWER AND CABLE
- 0039 OVER LAY POWER AND CABLE
- 0040 OVER LAY POWER AND CABLE
- 0041 OVER LAY POWER AND CABLE
- 0042 OVER LAY POWER AND CABLE
- 0043 OVER LAY POWER AND CABLE
- 0044 OVER LAY POWER AND CABLE
- 0045 OVER LAY POWER AND CABLE
- 0046 OVER LAY POWER AND CABLE
- 0047 OVER LAY POWER AND CABLE
- 0048 OVER LAY POWER AND CABLE
- 0049 OVER LAY POWER AND CABLE
- 0050 OVER LAY POWER AND CABLE
- 0051 OVER LAY POWER AND CABLE
- 0052 OVER LAY POWER AND CABLE
- 0053 OVER LAY POWER AND CABLE
- 0054 OVER LAY POWER AND CABLE
- 0055 OVER LAY POWER AND CABLE
- 0056 OVER LAY POWER AND CABLE
- 0057 OVER LAY POWER AND CABLE
- 0058 OVER LAY POWER AND CABLE
- 0059 OVER LAY POWER AND CABLE
- 0060 OVER LAY POWER AND CABLE
- 0061 OVER LAY POWER AND CABLE
- 0062 OVER LAY POWER AND CABLE
- 0063 OVER LAY POWER AND CABLE
- 0064 OVER LAY POWER AND CABLE
- 0065 OVER LAY POWER AND CABLE
- 0066 OVER LAY POWER AND CABLE
- 0067 OVER LAY POWER AND CABLE
- 0068 OVER LAY POWER AND CABLE
- 0069 OVER LAY POWER AND CABLE
- 0070 OVER LAY POWER AND CABLE
- 0071 OVER LAY POWER AND CABLE
- 0072 OVER LAY POWER AND CABLE
- 0073 OVER LAY POWER AND CABLE
- 0074 OVER LAY POWER AND CABLE
- 0075 OVER LAY POWER AND CABLE
- 0076 OVER LAY POWER AND CABLE
- 0077 OVER LAY POWER AND CABLE
- 0078 OVER LAY POWER AND CABLE
- 0079 OVER LAY POWER AND CABLE
- 0080 OVER LAY POWER AND CABLE
- 0081 OVER LAY POWER AND CABLE
- 0082 OVER LAY POWER AND CABLE
- 0083 OVER LAY POWER AND CABLE
- 0084 OVER LAY POWER AND CABLE
- 0085 OVER LAY POWER AND CABLE
- 0086 OVER LAY POWER AND CABLE
- 0087 OVER LAY POWER AND CABLE
- 0088 OVER LAY POWER AND CABLE
- 0089 OVER LAY POWER AND CABLE
- 0090 OVER LAY POWER AND CABLE
- 0091 OVER LAY POWER AND CABLE
- 0092 OVER LAY POWER AND CABLE
- 0093 OVER LAY POWER AND CABLE
- 0094 OVER LAY POWER AND CABLE
- 0095 OVER LAY POWER AND CABLE
- 0096 OVER LAY POWER AND CABLE
- 0097 OVER LAY POWER AND CABLE
- 0098 OVER LAY POWER AND CABLE
- 0099 OVER LAY POWER AND CABLE
- 0100 OVER LAY POWER AND CABLE

### SHEET KEYNOTES

- BUILDING STRUCTURE AT NOMINATED TOWER

Belle Maison



EXTERIO  
EAST ELEVATION  
NORTH ELEV