



# City of Chicago



O2016-3203

Office of the City Clerk

## Document Tracking Sheet

<b>Meeting Date:</b>	4/13/2016
<b>Sponsor(s):</b>	Reilly (42)
<b>Type:</b>	Ordinance
<b>Title:</b>	Grant(s) of privilege in public way for RMW Streeterville LLC - window surrounds (sillis)
<b>Committee(s) Assignment:</b>	Committee on Transportation and Public Way

ORDINANCE  
RMW STREETERVILLE LLC  
Acct. No. 399254 - 2  
Permit No. 1122744

*Be It Ordained by the City Council of the City of Chicago:*

SECTION 1. Permission and authority are hereby given and granted to RMW STREETERVILLE LLC, upon the terms and subject to the conditions of this ordinance to construct, install, maintain and use fifty-eight (58) Window Surround(s) (Sillis) projecting over the public right-of-way adjacent to its premises known as 451 E. Grand Ave..

Said Window Surround(s) (Sillis) at E. Grand Avenue measure(s):

Four (4) at nine point eight three (9.83) feet in length, and five point seven five (5.75) feet in width for a total of two hundred twenty-six point zero nine (226.09) square feet. Said sillis shall be approximately forty-four (44) feet above grade level.

Four (4) at nine point eight three (9.83) feet in length, and five point seven five (5.75) feet in width for a total of two hundred twenty-six point zero nine (226.09) square feet. Said sillis shall be approximately one hundred eight (108) feet above grade level.

Four (4) at nine point eight three (9.83) feet in length, and five point seven five (5.75) feet in width for a total of two hundred twenty-six point zero nine (226.09) square feet. Said sillis shall be approximately one hundred seventy (170) feet above grade level.

Four (4) at nine point eight three (9.83) feet in length, and five point seven five (5.75) feet in width for a total of two hundred twenty-six point zero nine (226.09) square feet. Said sillis shall be approximately two hundred thirty-one (231) feet above grade level.

Four (4) at nine point eight three (9.83) feet in length, and five point seven five (5.75) feet in width for a total of two hundred twenty-six point zero nine (226.09) square feet. Said sillis shall be approximately two hundred ninety-two (292) feet above grade level.

Four (4) at nine point eight three (9.83) feet in length, and five point seven five (5.75) feet in width for a total of two hundred twenty-six point zero nine (226.09) square feet. Said sillis shall be approximately three hundred fifty-three (253) feet above grade level.

Two (2) at eleven point four two (11.42) feet in length, and four point two five (4.25) feet in width for a total of ninety-seven point zero seven (97.07) square feet. Said sillis shall be approximately forty-four (44) feet above grade level.

Three (3) at ten point eight three (10.83) feet in length, and five point seven five (5.75) feet in width for a total of one hundred eighty-six point eight two (186.82) square feet. Said sillis shall be approximately four hundred nine (409) feet above grade level.

Three (3) at ten point eight three (10.83) feet in length, and five point seven five (5.75) feet in width for a total of one hundred eighty-six point eight two (186.82) square feet. Said sillis shall be approximately six hundred seventy-three (673) feet above grade level.

Three (3) at ten point eight three (10.83) feet in length, and five point seven five (5.75) feet in width for a total of one hundred eighty-six point eight two (186.82) square feet. Said sillis shall be approximately six hundred eighty-five (685) feet above grade level.

Three (3) at ten point eight three (10.83) feet in length, and ten point eight three (10.83) feet in width for a total of three hundred fifty-one point eight seven (351.87) square feet. Said sillis shall be approximately six hundred ninety-eight (698) feet above grade level.

Two (2) at twelve point eight three (12.83) feet in length, and point five (.5) feet in width for a total of twelve point eight three (12.83) square feet. Said sillis shall be approximately four hundred fifty-two (452) feet above grade level.

Two (2) at twelve point eight three (12.83) feet in length, and point five (.5) feet in width for a total of twelve point eight three (12.83) square feet. Said sillis shall be approximately four hundred seventy-five (475) feet above grade level.

Two (2) at twelve point eight three (12.83) feet in length, and point five (.5) feet in width for a total of twelve point eight three (12.83) square feet. Said sillis shall be approximately four hundred ninety-nine (499) feet above grade level.

Two (2) at twelve point eight three (12.83) feet in length, and point five (.5) feet in width for a total of twelve point eight three (12.83) square feet. Said sillis shall be approximately five hundred twenty-three (523) feet above grade level.

Two (2) at twelve point eight three (12.83) feet in length, and point five (.5) feet in width for a total of twelve point eight three (12.83) square feet. Said sillis shall be approximately five hundred forty-six (546) feet above grade level.

Two (2) at twelve point eight three (12.83) feet in length, and point five (.5) feet in width for a total of twelve point eight three (12.83) square feet. Said sillis shall be approximately five hundred sixty-nine (569) feet above grade level.

Two (2) at twelve point eight three (12.83) feet in length, and point five (.5) feet in width for a total of twelve point eight three (12.83) square feet. Said sillis shall be approximately five hundred ninety-five (595) feet above grade level.

Two (2) at twelve point eight three (12.83) feet in length, and point five (.5) feet in width for a total of twelve point eight three (12.83) square feet. Said sillis shall be approximately six hundred twenty (620) feet above grade level.

One (1) at twelve point eight three (12.83) feet in length, and point five (.5) feet in width for a total of six point four two (6.42) square feet. Said sill shall be approximately six hundred eighty-five (685) feet above grade level.

Three (3) at eleven point four two (11.42) feet in length, and poit five (.5) feet in width for a total of seventeen point one three (17.13) square feet. Said sillis shall be approximately six hundred ninety-eight (698) feet above grade level.

The location of said privilege shall be as shown on prints kept on file with the Department of Business Affairs and Consumer Protection and the Office of the City Clerk.

Said privilege shall be constructed in accordance with plans and specifications approved by the Department of Planning and Development and Department of Transportation (Division of Project Development).

This grant of privilege in the public way shall be subject to the provisions of Section 10-28-015 and all other required provisions of the Municipal Code of Chicago.

The grantee shall pay to the City of Chicago as compensation for the privilege #1122744 herein granted the sum of two thousand five (\$2,005.00) per annum in advance.

A 25% penalty will be added for payments received after due date.

The permit holder agrees to hold the City of Chicago harmless for any damage, relocation or replacement costs associated with damage, relocation or removal of private property caused by the City performing work in the public way.

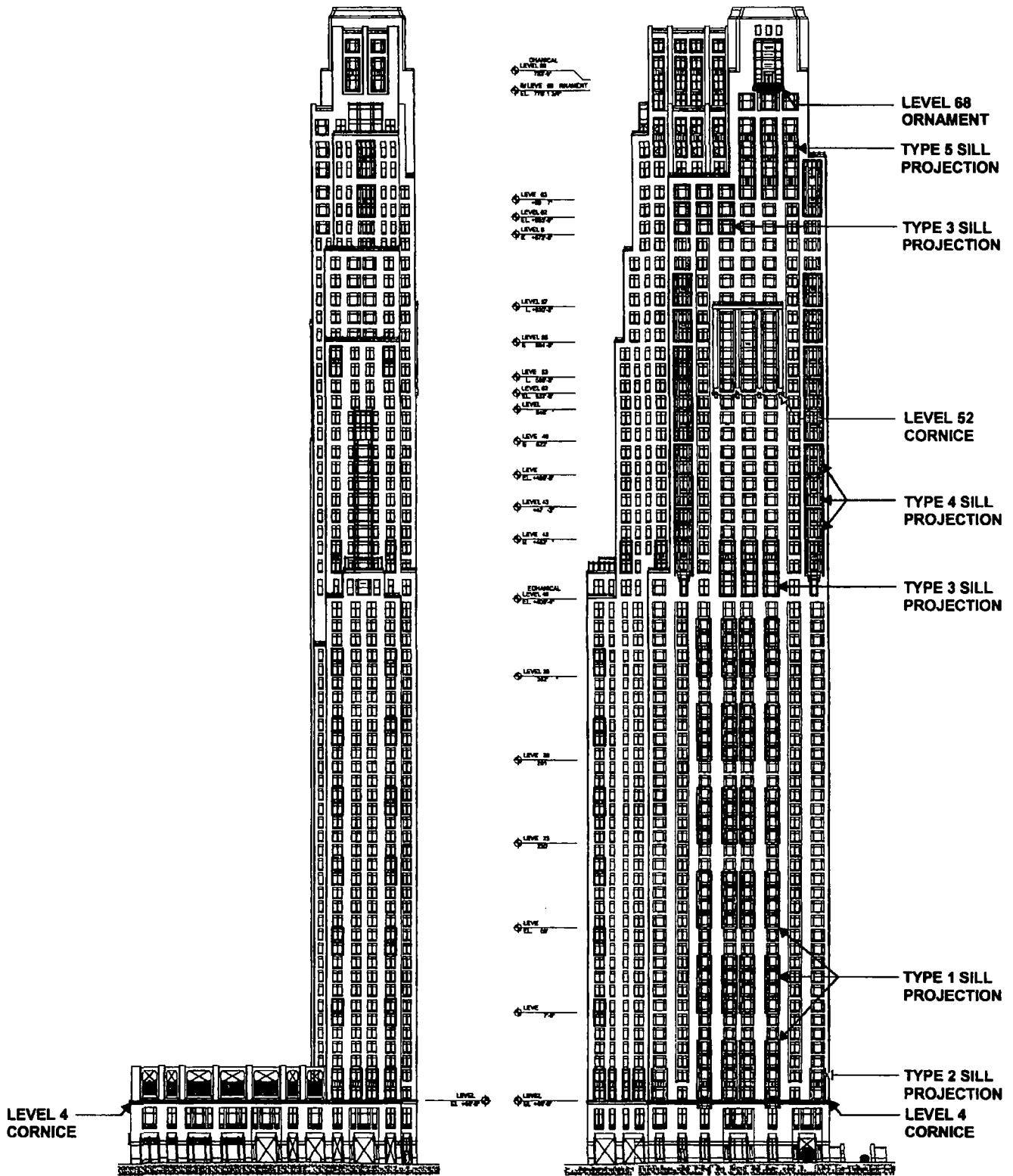
Authority herein given and granted for a period of five (5) years from and after Date of Passage.

Alderman \_\_\_\_\_

Brendan Reilly 42nd Ward

EAST

NORTH



# GOP-SK-005 NORTH & EAST ELEVATIONS

SCALE 1 = 100 0

© 2016 G|R|E|C Architects LLC

8 March 2016