



# City of Chicago



Or2015-92

Office of the City Clerk

## Document Tracking Sheet

<b>Meeting Date:</b>	3/12/2015
<b>Sponsor(s):</b>	Moreno (1)
<b>Type:</b>	Order
<b>Title:</b>	Issuance of permits for sign(s)/signboard(s) at 1360 N Ashland Ave
<b>Committee(s) Assignment:</b>	Committee on Zoning, Landmarks and Building Standards

ORDERED, That the Commissioner of the Building Department is hereby directed to issue a sign permit to: *(Contractor's name and address)*

Olympic Signs  
1130 N. Garfield Rd.  
Lombard, IL 60148

For the erection of a sign / signboard over twenty-four (24) feet in height and / or over one hundred (100) square feet (in area of one face) at:

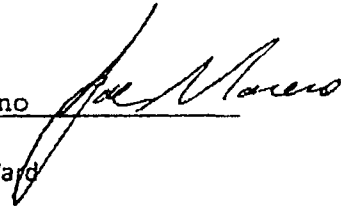
Lowe's  
1360 N. Ashland Ave.  
Chicago, IL

With the following Dimensions, height, and square foot area:

Dimensions: Length: 28'8" feet Height 7'0" feet  
Height Above Grade / Roof to top of Sign: 14 feet  
Total Square Foot Area: 201 Square Feet

Such signs shall comply with all provisions of Title 17 of the Chicago Zoning Ordinance and all other applicable provisions of the Municipal Code of the City of Chicago governing the construction and maintenance of outdoor signs, sign boards, and structures.

Joe Moreno  
Alderman,  
1st Ward



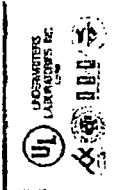


**CORPORATE HEADQUARTERS**  
 277 West 10th Street, Amesbury, MA 01921  
 Phone: 978-952-2200 Fax: 978-952-2201  
 www.atlasign.com

**NORTHEAST DIVISION**  
 1000 North Main Street, Suite 100  
 Amesbury, MA 01921  
 Phone: 978-952-2200 Fax: 978-952-2201  
 www.atlasign.com

Drawn No	540013
Sheet No	(1) OF (11)
Date	01/18/2011
Proj	Lowes (Lowes) (Lowes) (Lowes)
PL	Judy Skocz
Drawn By	J. Skocz
Scale	As Shown
Revision 1	
Revision 2	
Revision 3	
Revision 4	
Revision 5	

**LOWE'S**  
 CHICAGO



Approved By: \_\_\_\_\_  
 Date: \_\_\_\_\_

APPROVAL - OK  
 APPROVAL - NO  
 APPROVAL - COMMENT

# LOWE'S

SQUARE FOOTAGE  
 Channel Letters 200.00 sq ft



7'-0" Channel Letters

STURDIFRUIT RENDERING (BY OTHERS)

ITEM DESCRIPTION	
1	7'-0" Channel Letters
2	7'-0" Channel Letters
3	7'-0" Channel Letters
4	7'-0" Channel Letters
5	7'-0" Channel Letters
6	7'-0" Channel Letters
7	7'-0" Channel Letters
8	7'-0" Channel Letters
9	7'-0" Channel Letters
10	7'-0" Channel Letters
11	7'-0" Channel Letters
12	7'-0" Channel Letters
13	7'-0" Channel Letters
14	7'-0" Channel Letters
15	7'-0" Channel Letters
16	7'-0" Channel Letters
17	7'-0" Channel Letters
18	7'-0" Channel Letters
19	7'-0" Channel Letters
20	7'-0" Channel Letters
21	7'-0" Channel Letters
22	7'-0" Channel Letters
23	7'-0" Channel Letters
24	7'-0" Channel Letters
25	7'-0" Channel Letters
26	7'-0" Channel Letters
27	7'-0" Channel Letters
28	7'-0" Channel Letters
29	7'-0" Channel Letters
30	7'-0" Channel Letters
31	7'-0" Channel Letters
32	7'-0" Channel Letters
33	7'-0" Channel Letters
34	7'-0" Channel Letters
35	7'-0" Channel Letters
36	7'-0" Channel Letters
37	7'-0" Channel Letters
38	7'-0" Channel Letters
39	7'-0" Channel Letters
40	7'-0" Channel Letters
41	7'-0" Channel Letters
42	7'-0" Channel Letters
43	7'-0" Channel Letters
44	7'-0" Channel Letters
45	7'-0" Channel Letters
46	7'-0" Channel Letters
47	7'-0" Channel Letters
48	7'-0" Channel Letters
49	7'-0" Channel Letters
50	7'-0" Channel Letters
51	7'-0" Channel Letters
52	7'-0" Channel Letters
53	7'-0" Channel Letters
54	7'-0" Channel Letters
55	7'-0" Channel Letters
56	7'-0" Channel Letters
57	7'-0" Channel Letters
58	7'-0" Channel Letters
59	7'-0" Channel Letters
60	7'-0" Channel Letters
61	7'-0" Channel Letters
62	7'-0" Channel Letters
63	7'-0" Channel Letters
64	7'-0" Channel Letters
65	7'-0" Channel Letters
66	7'-0" Channel Letters
67	7'-0" Channel Letters
68	7'-0" Channel Letters
69	7'-0" Channel Letters
70	7'-0" Channel Letters
71	7'-0" Channel Letters
72	7'-0" Channel Letters
73	7'-0" Channel Letters
74	7'-0" Channel Letters
75	7'-0" Channel Letters
76	7'-0" Channel Letters
77	7'-0" Channel Letters
78	7'-0" Channel Letters
79	7'-0" Channel Letters
80	7'-0" Channel Letters
81	7'-0" Channel Letters
82	7'-0" Channel Letters
83	7'-0" Channel Letters
84	7'-0" Channel Letters
85	7'-0" Channel Letters
86	7'-0" Channel Letters
87	7'-0" Channel Letters
88	7'-0" Channel Letters
89	7'-0" Channel Letters
90	7'-0" Channel Letters
91	7'-0" Channel Letters
92	7'-0" Channel Letters
93	7'-0" Channel Letters
94	7'-0" Channel Letters
95	7'-0" Channel Letters
96	7'-0" Channel Letters
97	7'-0" Channel Letters
98	7'-0" Channel Letters
99	7'-0" Channel Letters
100	7'-0" Channel Letters

Lowes's 7'-0" Channel Letters on South Elevation

# LOWE'S

**LOWE'S** 1360 North Ashland Ave - CHICAGO, IL Channel Letters on South Elevation

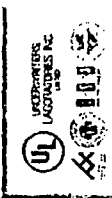


**CORPORATE HEADQUARTERS**  
 1700 West Loop West, Suite 1000, Houston, TX 77056  
 Phone: 281.465.1100  
 Fax: 281.465.1101  
 www.atlassignsystems.com

**NORTHEAST DIVISION**  
 11000 N. Central Expressway  
 Suite 100, Dallas, TX 75243  
 Phone: 972.465.1100  
 Fax: 972.465.1101  
 www.atlassignsystems.com

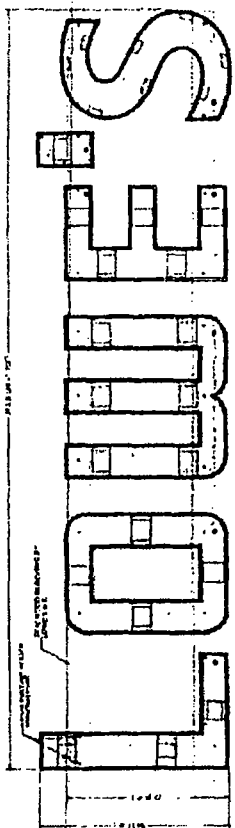
The design responsibility for this project shall remain with the client. Atlas Sign Systems is not responsible for the accuracy of the information provided in this drawing unless specifically stated otherwise. © 2008 Atlas Sign Systems

Drawing No.	540014
Sheet No.	M OF 110
Date	01/18/2013
Project	Home Improvement (Lowe's) - Chicago
Drawn By	J. Baggio
Scale	As Shown
Revision 1	
Revision 2	
Revision 3	
Revision 4	
Revision 5	



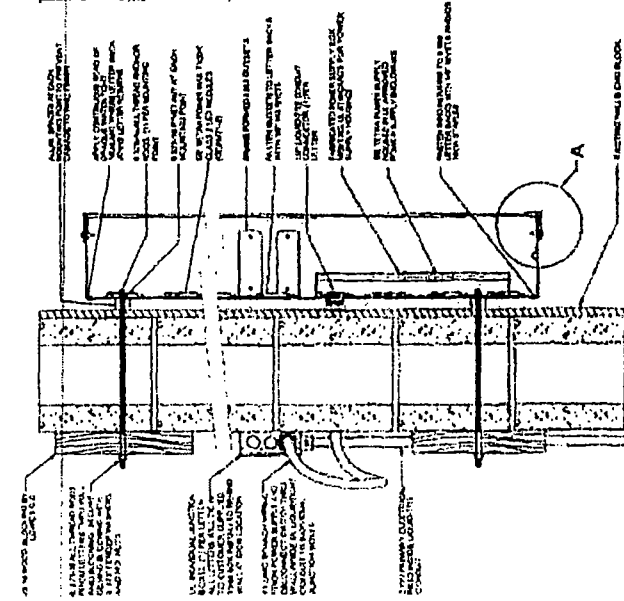
Approved: \_\_\_\_\_  
 Date: \_\_\_\_\_

APPROVED AS SHOWN  
 APPROVED AS NOTED  
 CONTACT A REVISION

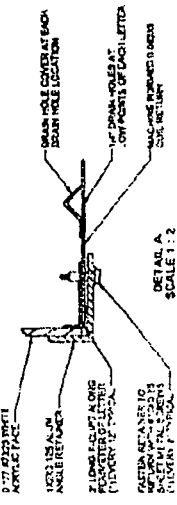


**MOUNTING SCHEDULE**  
 C = (4) ANCHOR RODS  
 W = (10) ANCHOR RODS  
 E = (10) ANCHOR RODS  
 S = (6) ANCHOR RODS

LETTER ELEVATION SHOWING MOUNTING POINTS



SECTION THRU WALL & LETTERS (FRONT ELEVATION)



DETAIL A SCALE 1/2

PART 1 LED SYSTEM		PART 2 MATERIAL ESTIMATE		PART 3 QUANTITY TAKE OFF		PART 4 MATERIAL ESTIMATE	
ITEM	DESCRIPTION	UNIT	QUANTITY	UNIT	QUANTITY	UNIT	QUANTITY
1	LED SYSTEM	EA	1	ANCHOR RODS	EA	10	10
2	ANCHOR RODS	EA	10	ANCHOR RODS	EA	10	10
3	ANCHOR RODS	EA	10	ANCHOR RODS	EA	10	10
4	ANCHOR RODS	EA	10	ANCHOR RODS	EA	10	10
5	ANCHOR RODS	EA	10	ANCHOR RODS	EA	10	10
6	ANCHOR RODS	EA	10	ANCHOR RODS	EA	10	10
7	ANCHOR RODS	EA	10	ANCHOR RODS	EA	10	10
8	ANCHOR RODS	EA	10	ANCHOR RODS	EA	10	10
9	ANCHOR RODS	EA	10	ANCHOR RODS	EA	10	10
10	ANCHOR RODS	EA	10	ANCHOR RODS	EA	10	10

Lighting Solutions  
 11000 N. Central Expressway, Suite 100, Dallas, TX 75243

Draw # 045541-03 Rev



CITY OF CHICAGO

# DEPARTMENT OF BUILDINGS

## Sign Permit Application

APPROVAL NUMBER 17726	APPLICATION NUMBER 100580464	ANNUAL FEE	WORK CODE	DRAWINGS ATTACHED <input type="checkbox"/> YES <input type="checkbox"/> NO
DATE OF APPLICATION 02/06/2015	ADDRESS OF SIGN 1360 N ASHLAND AVE, 60622-		TYPE OF SIGN FLAT OR BOX	
BUILDING	ORIGINAL PERMIT NUMBER	LENGTH 28	FT. 8	HEIGHT 7
TYPE OF PERMIT NEW CONSTRUCTION (SIGN)		AREA 201	SQ FT	WEIGHT 999
PAYER OF ANNUAL INSPECTION STURDIVANT, CHARLES 1605 CURTIS BRIDGE ROAD WILKESBORO, NC 28697 (336)658-4822		SIGN HEIGHT ABOVE GRADE-ROOF 14		FT.
SIGN MANUFACTURER ATLAS SIGN INDUSTRIES		SHAPE OF SIGN REGULAR		
ADDRESS WHERE SIGN CAN BE SEEN PRIOR TO ERECTION		SKIN WILL READ LOWE'S		
TICKET NUMBER 0	REINSPECTION CONTROL NUMBER	NO. OF LAMPS 244	TOTAL WATTAGE 366	
TYPE OF SUPPORT FOR SIGN BUILDING		TYPE OF LAMP OTHER		
SIGN BOARD SUPPORT MEMBERS OTHER		NO. OF BALLAST/TRANSFORMERS 9	INPUT OF TRANSFORMERS 120V	
ANNUAL FEE		CONTRACTOR WILL INSTALL <input checked="" type="checkbox"/> FEEDERS <input checked="" type="checkbox"/> CUSTOMER LEADS		
CONSTRUCTION FEE		TYPE OF SWITCH		
1017 B FEE		LOCATION OF SWITCH OUTSIDE SIGN		
TOTAL FEE		SIGN LOCATION INSTALL ONE SET OF LED ILLUMINATED CHANNEL LETTERS ON SOUTH ELEVATION OF BUILDING. "SWITCH IS PART OF UL SIGN."		
AMOUNT PAID				
BALANCE DUE				

The undersigned certify that the statements in this application are true and correct and that all work done under the non-work permit will conform to the requirements of the Chicago Municipal Code

REG NO. E69270	REQ NO. N91822
ELECT CONTR OLYMPIC SIGNS, INC. ADDRESS 1130 N. GARFIELD LOMBARD, IL 60148	SIGN ERECTOR OLYMPIC SIGNS INC. ADDRESS 1130 N. GARFIELD LOMBARD IL, 60148
SUPERVISOR SIGNATURE <i>Bill Fyter</i>	SIGNER

The permit issued on this application will authorize only signs here applied for. If other signs are to be erected they must be covered by additional permits

City of Chicago  
Rahm Emanuel, Mayor



Department of Buildings  
Felicia Davis, Commissioner

TYPE OF BUSINESS <u>COMMERCIAL</u> Other: _____		SIGN BOND REQUIRED? <input type="checkbox"/> YES	
Name <u>LOWE'S</u>		COUNCIL ORDER REQUIRED <input checked="" type="checkbox"/> YES	
LIC #: <u>2379660</u>		IS SPECIAL PERMISSION REQUIRED FROM CHIEF ELECTRICAL	
Renewal Date: _____		<input type="checkbox"/> YES	
Projects Over: <input checked="" type="checkbox"/> Private Property <input checked="" type="checkbox"/> Public Way Grant Permit #: _____		IF YES, ATTACH LETTER OF REQUEST	
<input checked="" type="checkbox"/> Planned Development/Manufacturing PMD/PD# <u>PD300</u>		TIME STAMP	
Zoning District <u>OTHER</u> Other: <u>PD300</u>			
TYPE OF SIGN:			
<input type="checkbox"/> ADVERTISING		<input checked="" type="checkbox"/> ILLUMINATE <input type="checkbox"/> MOVEABLE	
<input checked="" type="checkbox"/> BUSINESS		<input type="checkbox"/> FLASHING	
TOTAL STREET FRONTAGE OF LOT (IN FEET)		<u>535</u>	
TOTAL AREA OF NEW SIGN (SQ.FT.)		<u>201</u>	
TOTAL AREA OF ALL SIGNS ON LOT (SQ.FT.)		<u>3,025</u>	
HEIGHT OF SIGN ABOVE GRADE (TO TOP)		<u>21ft</u> 0in	
DISTANCE OF CURB LINE OUTER EDGE (ft)		<u>14</u>	SIGN CLERK
DISTANCE OF STRUCTURE INNER EDGE (ft)		<u>14</u>	APPROVED FOR PERMIT
DISTANCE FROM (ft):		REMARKS	
A. PUBLIC PARK (OVER 10 ACRES)		<u>575</u>	
B. EXPRESSWAY (IF LESS THAN 1,000 FT.)		<u>1,000</u>	
C. RESIDENCE DISTRICT (ADVERTISING SIGNS ONLY)		<u>180</u>	
IF REPLACEMENT SIGN OR CHANGE OF FACE, WHAT DOES THE EXISTING SIGN READ?			
Original Payee: _____			
Landmark Hold: <input type="checkbox"/>		Status: _____	
ZONING (OFFICE USE ONLY)			