



# City of Chicago



O2013-6198

Office of the City Clerk

## Document Tracking Sheet

<b>Meeting Date:</b>	9/11/2013
<b>Sponsor(s):</b>	Burns, William D. (4)
<b>Type:</b>	Ordinance
<b>Title:</b>	Issuance of permits for sign(s)/signboard(s) at 3445 S Martin Luther King Dr - 170 sq. ft.
<b>Committee(s) Assignment:</b>	Committee on Zoning, Landmarks and Building Standards

**ORDINANCE**

Be it ordained by the City Council of the City of Chicago:

Section 1. That the Commissioner of Buildings is hereby authorized and directed to issue a sign permit to Midwest Sign & Lighting, Inc., 4910 W. Wilshire Blvd, Country Club Hills, IL 60478 for the erection of a sign/signboard over 24 feet in height and/or over 100 square feet (in area of one face) at 3445 S. Martin Luther King Dr., Chicago, IL 60616 (West Elevation) with the dimensions, height and square foot area:

Dimensions: length: 32' - 4 1/2" Height: 5'3"

Height above grade/roof to the top of the sign: 25'

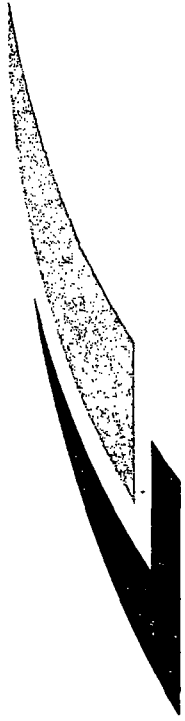
Total Square Foot Area 170 sq feet

Such signs (s) shall comply with all applicable provisions of Chapter 194A of the Chicago Zoning Ordinance and all other applicable provisions of the Municipal Code of the City of Chicago governing the construction and maintenance of outdoor signs, signboards and structures.

Section 2. This ordinance shall be in force and effect from and after its passage and due publication.



William D. Burns  
Alderman, 4<sup>th</sup> Ward  
City of Chicago



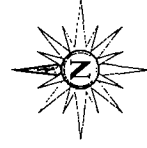
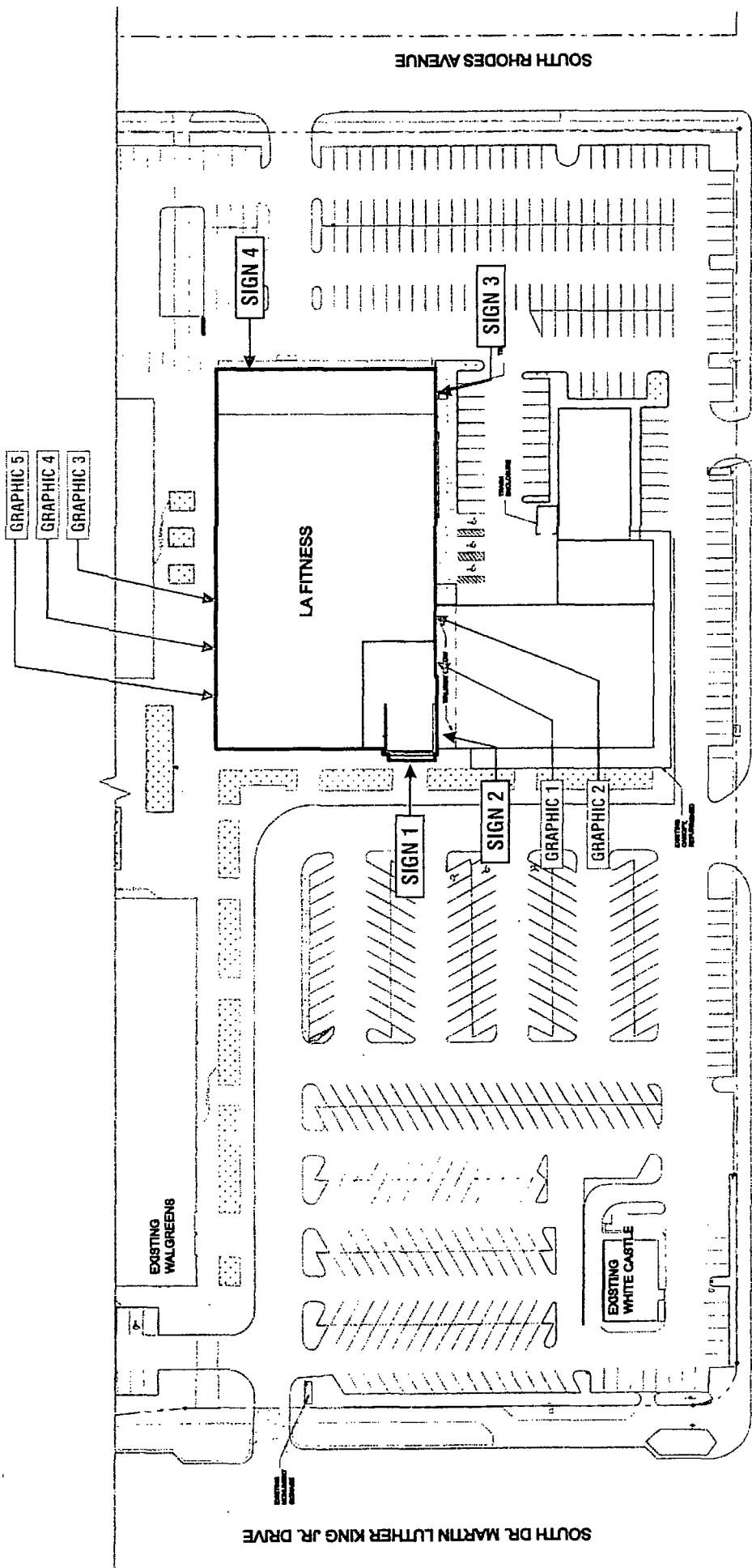
# LA|FITNESS

**Location: #1138**

**South Martin Luther King Drive  
Chicago, IL**

*The Icon Companies®*





DRAWINGS PREPARED BY:

Rev #	Rev #	Date	Reg	By	Drawn By	Revision Description
Rev 1	154653	08/08/13	DR	KWK	XXX	Added bkgd. panel to sign 4
Rev 2	000000	00/00/00	XXX	XXX	XXX	
Rev 3	000000	00/00/00	XXX	XXX	XXX	
Rev 4	000000	00/00/00	XXX	XXX	XXX	
Rev 5	000000	00/00/00	XXX	XXX	XXX	
Rev 6	000000	00/00/00	XXX	XXX	XXX	

FILE PATH: ActiveACCOUNTS\LA FITNESS\Locations\3101 - 1138 Chicago IL

**SITE PLAN**  
 Location: South Martin Luther King Drive  
 Chicago, IL  
 Proj #: 3101 Loc #: 1138 Date: 08/07/13  
 Req # 154171 Drawn By: KWK Page #: 2

5"

32'-4 1/2"

LA FITNESS

5'-3"  
1'-6"  
3'-6"

NON-ILLUMINATED

42" WHITE LED ILLUMINATED LETTERS - SELF CONTAINED (113 Sq. Ft.)

GRAY RETURNS, METAL RETAINERS - PAINTED GRAY

SIDE VIEW

SCALE: 1/8" = 1'-0"

151'-8"

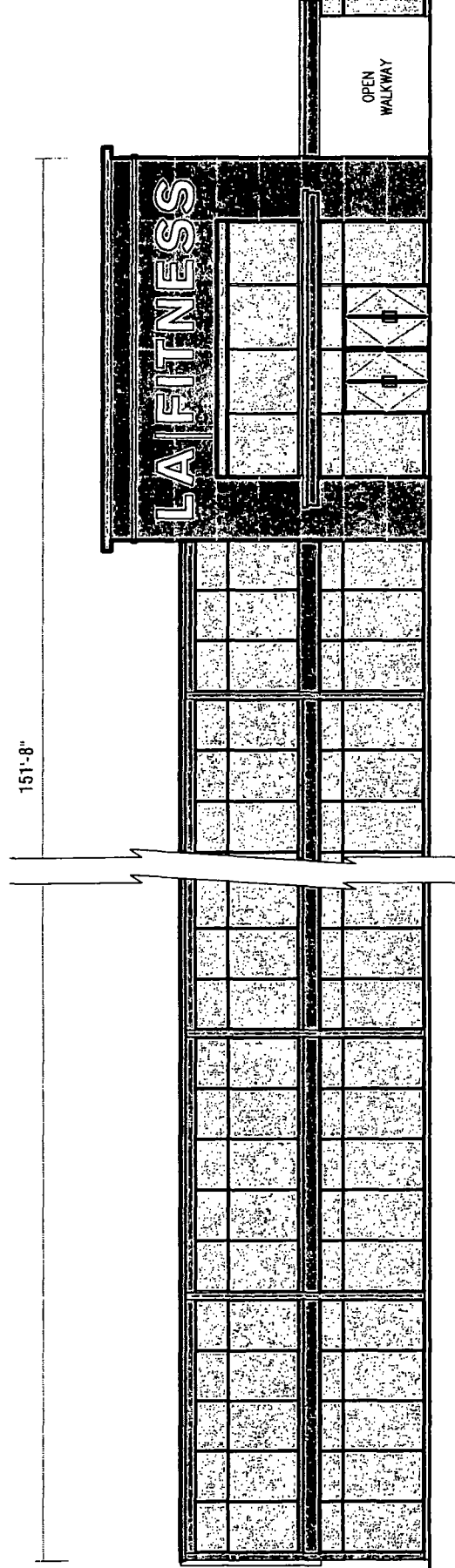
TI/ PARAPET  
EL: 30' - 10"

TI/ ROOF  
EL: 23' - 5-1/2"

TI/ CANOPY  
EL: 12' - 2-1/2"

GROUND FLOOR  
EL: 0'-0"

WEST ELEVATION

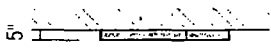


OPEN WALKWAY

SCALE: 1/16" = 1'-0"

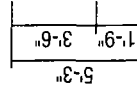
NOTE: WALL SECTION DETAILS TO BE VERIFIED

		<b>SIGN 1</b> Location: South Martin Luther King Drive Chicago, IL Proj #: 3101 Loc #: 1138 Date: 08/07/13 Req #: 154171 Drawn By: KWK Page #: 3		Rev #	Ren #	Date	Ren. By	Drawn By	Revision Description
				Rev 1	154653	08/08/13	DR	KWK	XXX
The Icon Companies Drawings are the exclusive property of Icon Identity Solutions Inc. Any unauthorized use or duplication is not permitted.									



32'-4 1/2"

LA | FITNESS



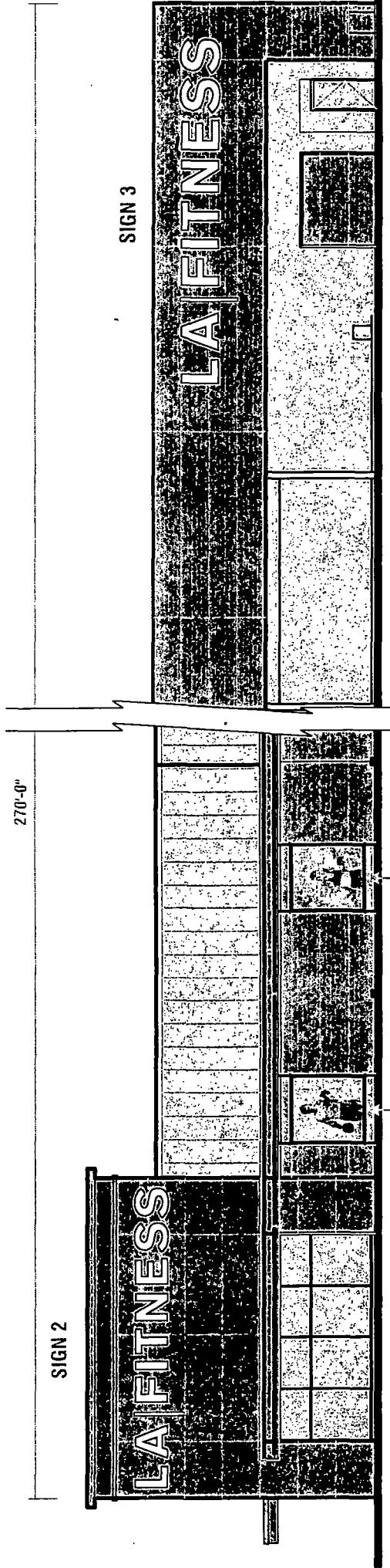
NON-ILLUMINATED

42" WHITE LED ILLUMINATED LETTERS - SELF CONTAINED (113 Sq. Ft.)

GRAY RETURNS, METAL RETAINERS - PAINTED GRAY

SIDE VIEW

SCALE: 1/8" = 1'-0"



SIGN 2

SIGN 3

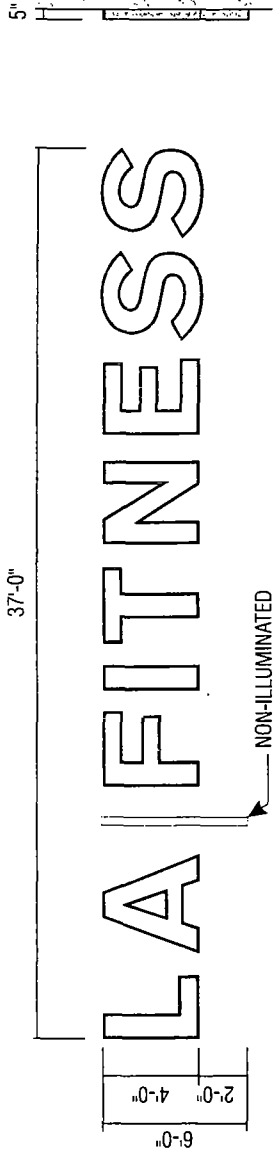
ILLUMINATED GRAPHIC BOXES

SOUTH ELEVATION

SCALE: 1/16" = 1'-0"

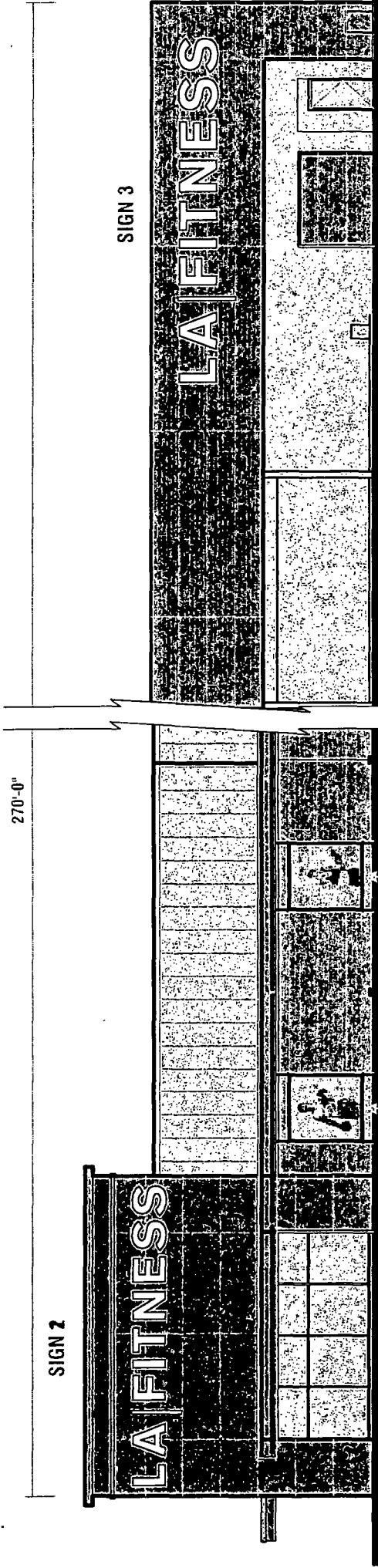
NOTE: WALL SECTION DETAILS TO BE VERIFIED

		<b>SIGN 2</b>		Rev. #	Rev. #	Date	Rev. By	Drawn By	Revision Description	
		Location: South Martin Luther King Drive Chicago, IL	Rev 1	154653	08/07/13	DR	KWK	XXX	Added Bkgd. panel to Sign 4	
		Proj #: 3101	Loc #: 1138	Date: 08/07/13	Rev 2	000000	00/00/00	XXX	XXX	
		Req #: 154171	Drawn By: KWK	Page #: 4	Rev 3	000000	00/00/00	XXX	XXX	
		FILE PATH: Active\ACCOUNTS\LA FITNESS\Locations\3101_1138_Chicago_IL		Rev 4	000000	00/00/00	XXX	XXX	XXX	XXX
		DRAWINGS PREPARED BY:		Rev 5	000000	00/00/00	XXX	XXX	XXX	XXX
		The Icon Companies®		Rev 6	000000	00/00/00	XXX	XXX	XXX	XXX
		icon   ims   ess		Drawings are the exclusive property of Icon Identity Solutions Inc. Any unauthorized use or duplication is not permitted.						



**48" WHITE LED ILLUMINATED LETTERS - SELF CONTAINED (148 Sq. Ft.)**  
 GRAY RETURNS, METAL RETAINERS - PAINTED GRAY

**SIDE VIEW**  
 SCALE: 1/8" = 1'-0"



ILLUMINATED GRAPHIC BOXES  
 96" X 88"

**SOUTH ELEVATION**

SCALE: 1/16" = 1'-0"

**NOTE: WALL SECTION DETAILS TO BE VERIFIED**

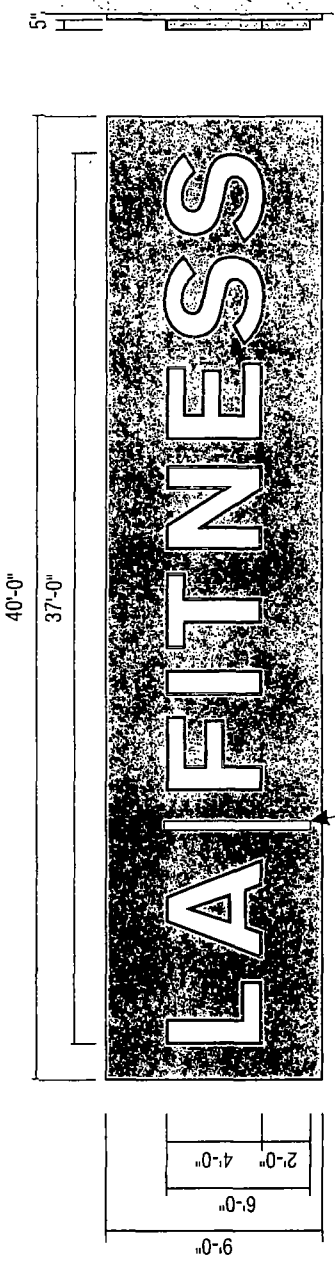
**SIGN 3**  
 Location: South Martin Luther King Drive  
 Chicago, IL  
 Proj #: 3101 Loc #: 1138 Date: 08/07/13  
 Reg #: 154171 Drawn By: KWK Page #: 5

Rev #	Rev #	Date	Rev. By	Drawn By	Revision Description
Rev 1	151653	08/08/13	DR	KWK	Added bkgrd. panel to sign 4
Rev 2	000000	00/00/00	XXX	XXX	
Rev 3	000000	00/00/00	XXX	XXX	
Rev 4	000000	00/00/00	XXX	XXX	
Rev 5	000000	00/00/00	XXX	XXX	
Rev 6	000000	00/00/00	XXX	XXX	

FILE PATH: Active\ACCOUNTS\LA FITNESS\Locations\3101\_1138\_Chicago\_IL

DRAWINGS PREPARED BY:

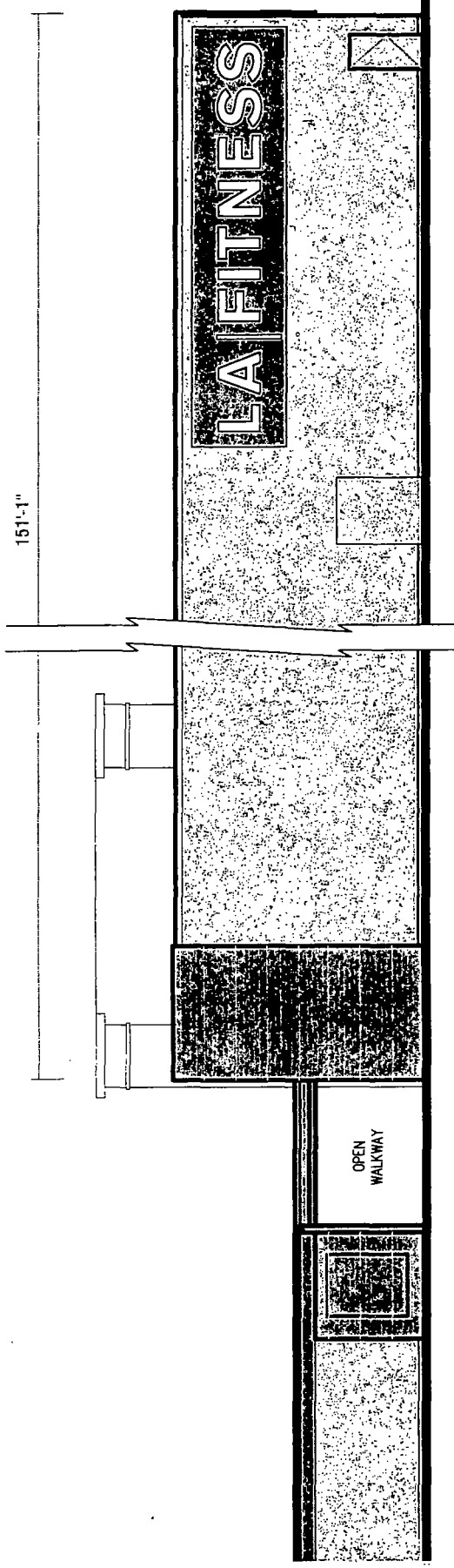
**icon** | **ims** | **ess**  
 The Icon Companies<sup>SM</sup>  
 icon | ims | ess  
 Drawings are the exclusive property of Icon Identity Solutions Inc. Any unauthorized use or duplication is not permitted.



**48" WHITE LED ILLUMINATED LETTERS W/ BACKGROUND PANEL - SELF CONTAINED (148 Sq. Ft.)**  
 GRAY RETURNS, METAL RETAINERS - PAINTED GRAY

SCALE: 1/8" = 1'-0"

SIDE VIEW



EAST ELEVATION

SCALE: 1/16" = 1'-0"

NOTE: WALL SECTION DETAILS TO BE VERIFIED

**SIGN 4**

Location: South Martin Luther King Drive  
Chicago, IL

Proj #: 3101 Loc #: 1138 Date: 08/07/13

Reg #: 154171 Drawn By: KWK Page #: 6

Rev #	Rev #	Date	Req. By	Drawn By	Revision Description
Rev 1	154653	08/08/13	DR	KWK	Added Bkgd. panel to sign 4
Rev 2	000000	00/00/00	XXX	XXX	
Rev 3	000000	00/00/00	XXX	XXX	
Rev 4	000000	00/00/00	XXX	XXX	
Rev 5	000000	00/00/00	XXX	XXX	
Rev 6	000000	00/00/00	XXX	XXX	

DRAWINGS PREPARED BY:

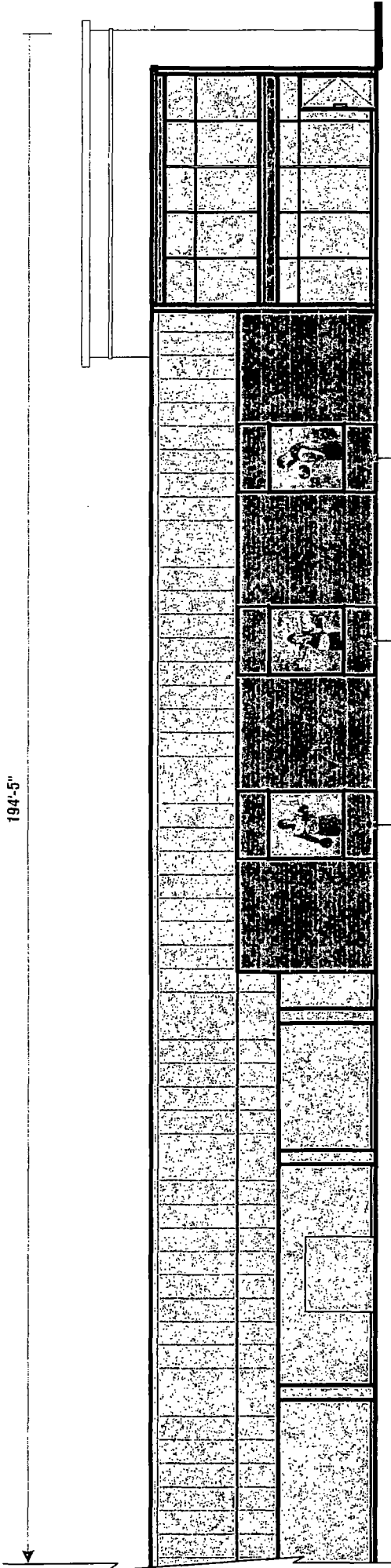
FILE PATH: Active\ACCOUNTS\LA FITNESS\Locations\3101\_1138\_Chicago\_IL

icon | ims | ess

Drawings are the exclusive property of Icon Identity Solutions Inc.  
Any unauthorized use or duplication is not permitted.



194'-5"



ILLUMINATED GRAPHIC BOXES

96' X 88"

5

4

3

NORTH ELEVATION

NOTE: WALL SECTION DETAILS TO BE VERIFIED

SCALE: 1/16" = 1'-0"



Location: South Martin Luther King Drive  
Chicago, IL

Proj #: 3101 Loc #: 1138 Date 08/07/13  
Req #: 154171 Drawn By: KWK Page #: 7

Rev #	Rev #	Date	Rev. By	Drawn By	Revision Description
Rev 1	154653	08/09/13	DIR	KWK	Added bldg. panel to sign 4
Rev 2	000000	00/00/00	XXX	XXX	
Rev 3	000000	00/00/00	XXX	XXX	
Rev 4	000000	00/00/00	XXX	XXX	
Rev 5	000000	00/00/00	XXX	XXX	
Rev 6	000000	00/00/00	XXX	XXX	

FILE PATH: Active\ACCOUNTS\LA FITNESS\Locations\3101\_1138\_Chicago\_IL

DRAWINGS PREPARED BY:

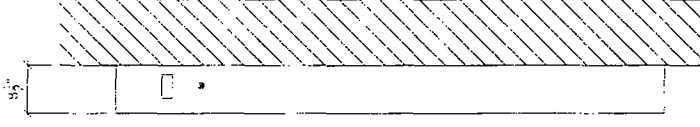
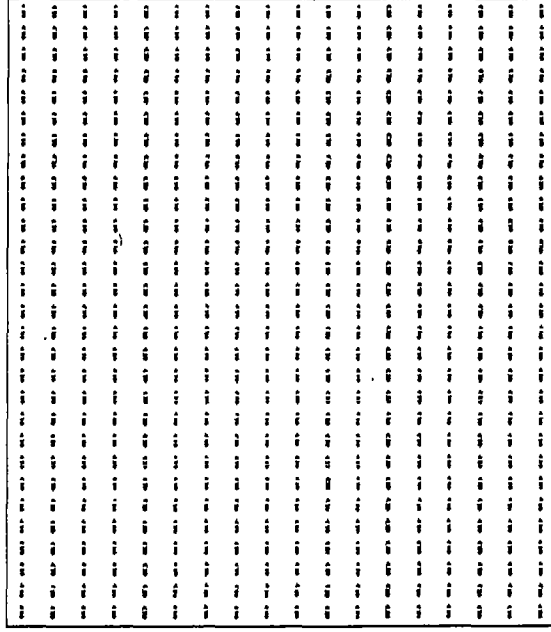
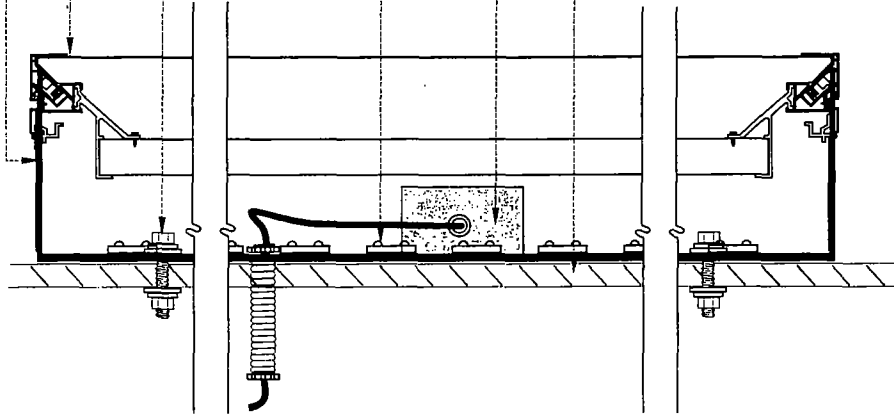
The Icon Companies<sup>®</sup>  
**icon** **ims** **ess**  
Icon Identity Solutions Inc. 11700 N. LA SALLE AVE. CHICAGO, IL 60631

Drawings are the exclusive property of Icon Identity Solutions Inc.  
 Any unauthorized use or duplication is not permitted.

8-1/2"

extruded alum. cabinet  
panaflex face/digital print  
(retainer painted silver met.)

3/8" lag-bolts



NOTE:  
FACES TO BE PROVIDED BY OTHERS  
AND SHIP TO ICON TO INSTALL IN BOX

PANAFLEX SIGNBOX DETAIL

N.T.S.

### TYPICAL CONSTRUCTION



**TYPICAL ILLUM. GRAPHIC BOX DETAIL**

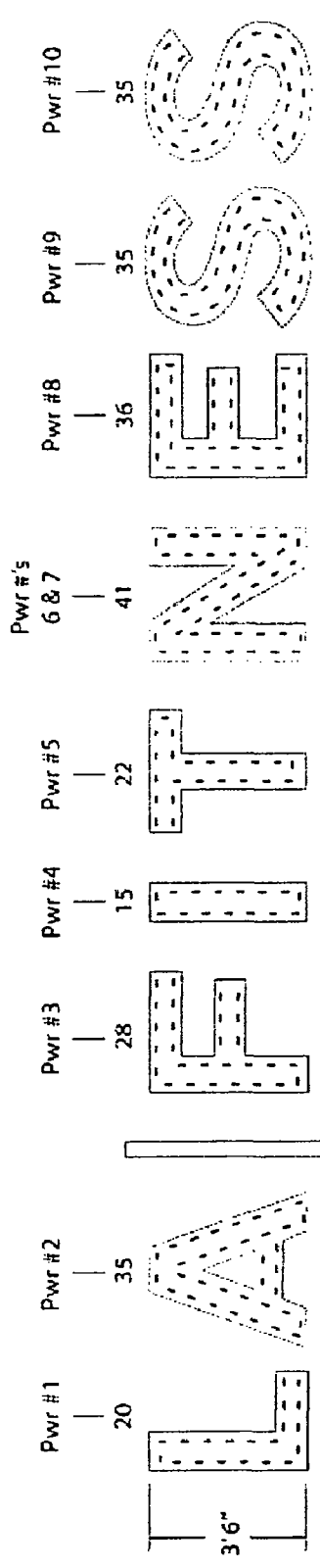
Location: South Martin Luther King Drive  
Chicago, IL

Proj # 3101 Loc # 1138 Date: 08/07/13  
Req # 154171 Drawn By: KWK Page # 8

Rev #	Rev #	Date	Reg. By	Drawn By	Revision Description
Rev 1	154653	08/08/13	DR	KWK	Added Bkgd panel to Sign 4
Rev 2	000000	00/00/00		XXX	XXX
Rev 3	000000	00/00/00		XXX	XXX
Rev 4	000000	00/00/00		XXX	XXX
Rev 5	000000	00/00/00		XXX	XXX
Rev 6	000000	00/00/00		XXX	XXX
FILE PATH: Active\ACCOUNTS\LA FITNESS\Locations\3101_1138_Chicago_IL					


DRAWINGS PREPARED BY:

If unless specified all quantities and layouts are for a single face sign on a single set of letters.  
 2) Quotations are based off the quality of artwork and amount of detailed information provided by the customer pertaining to font, letter height, can depth, face material, and any special instructions provided by the customer. Missing information may cause delays in the delivery of estimates as well as affect product selection, quantities, application and illumination.  
 3) LED module placement is an approximation. AgLight recommends the sign manufacturer verify the LED placement and quantity to ensure even illumination.  
 4) Final material estimates are the responsibility of the sign manufacturer to ensure the customer's expectations are met.  
 5) Unless otherwise stated on this drawing all face lit signs are assumed to be 5 inches deep and halo illuminated signs are assumed to be a minimum of 2 inches deep.  
 6) For detailed information on installation of AgLight LED modules and systems please refer to "Installation Guides" and "Product Specification Sheets" at [www.AgLight.com](http://www.AgLight.com) under the downloads section or contact a customer service representative toll free at 866.612.0203.



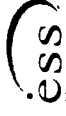


MH

134 feet White SignRayz™ Apex G2 7500K (LS-APEX-ASW-G2) - 267 Modules 10 - 60W Power Supplies		42" LA Fitness	<b>AGLIGHT</b> light ft up
December 7, 2011		1718 Arizon Parkway Ste 108, San Antonio, TX 78216 PH: (866) 482-0203 - Fax: (210) 360-1454 <a href="http://www.AgLight.com">www.AgLight.com</a>	



# LA|FITNESS

*The Icon Companies*  




Drawings are the exclusive property of Icon Identity Solutions Inc. Any unauthorized use or duplication is not permitted.

---

**42" LETTER LED LAYOUT**

Location: South Martin Luther King Drive  
Chicago, IL

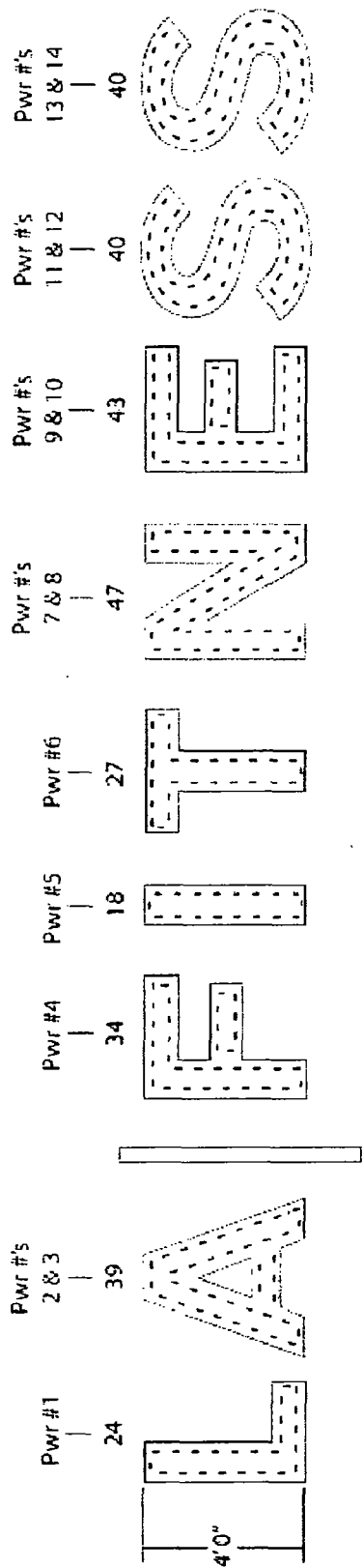
Proj #: 3101 | Loc #: 1138 | Date: 08/07/13

Req #: 154171 | Drawn By: KWK | Page #: 9

Rev #	Rev #	Date	Req. By	Drawn By	Revision Description
Rev 1	154653	08/08/13	DR	KWK	Added block, panel to sign 4
Rev 2	000000	00/00/00	XXX	XXX	
Rev 3	000000	00/00/00	XXX	XXX	
Rev 4	000000	00/00/00	XXX	XXX	
Rev 5	000000	00/00/00	XXX	XXX	
Rev 6	000000	00/00/00	XXX	XXX	
FILE PATH: Active\ACCOUNTS\LA FITNESS\Locations\3101_1138_Chicago_IL					


DRAWINGS PREPARED BY:

1) Unless specified all quotes and layouts are for a single face sign on a single set of letters.  
 2) Citations are based off the quality of art work and amount of detailed information provided by the customer pertaining to font, letter height, can depth, face material, and any special instructions provided by the customer.  
 3) Missing information may cause delays in the delivery of estimates as well as effect product selection, quantities, application, and illumination.  
 4) LED module placement is an approximation. Agilight recommends the sign manufacturer verify the LED placement and quantity to ensure even illumination.  
 5) Final materials/finishes are the responsibility of the sign manufacturer to ensure the customer's expectations are met.  
 6) Unless otherwise stated on this drawing, all face in signs are assumed to be 5 inches deep and into illuminated signs are assumed to be a minimum of 2 inches deep.  
 7) For detailed information on installation of Agilight LED modules and systems please refer to "Installation Guides" and "Product Specification Sheets" at [www.Agilight.com](http://www.Agilight.com) under the downloads section or contact a customer service representative toll free at: 866-882-0001.






MIH

156 feet White SignRayz™ Apex G2 7500K (LS-APEX-ASW-G2) - 312 Modules 14 - 60W Power Supplies		48" LA Fitness	<b>AGILIGHT</b> Light it Up
Proj #: 3101 Loc #: 1138 Date: 08/07/13 Req #: 154171 Drawn By: KWK Page #: 10		November 29, 2011	1218 Agilent Parkway Ste 108, San Antonio, TX 78216 PHE (866) 482-0203 - Fax: (210) 360-1454 <a href="http://www.Agilight.com">www.Agilight.com</a>



# LA FITNESS

*The Icon Companies®*

---

**48" LETTER LED LAYOUT**

Location: South Martin Luther King Drive  
Chicago, IL

Rev # | Rev # | Date | Rev. By | Drawn By | Revision Description

Rev 1	154653	08/08/13	DR	KWK	Added bldg panel to sign 4
Rev 2	000000	00/00/00	XXX	XXX	
Rev 3	000000	00/00/00	XXX	XXX	
Rev 4	000000	00/00/00	XXX	XXX	
Rev 5	000000	00/00/00	XXX	XXX	
Rev 6	000000	00/00/00	XXX	XXX	

---

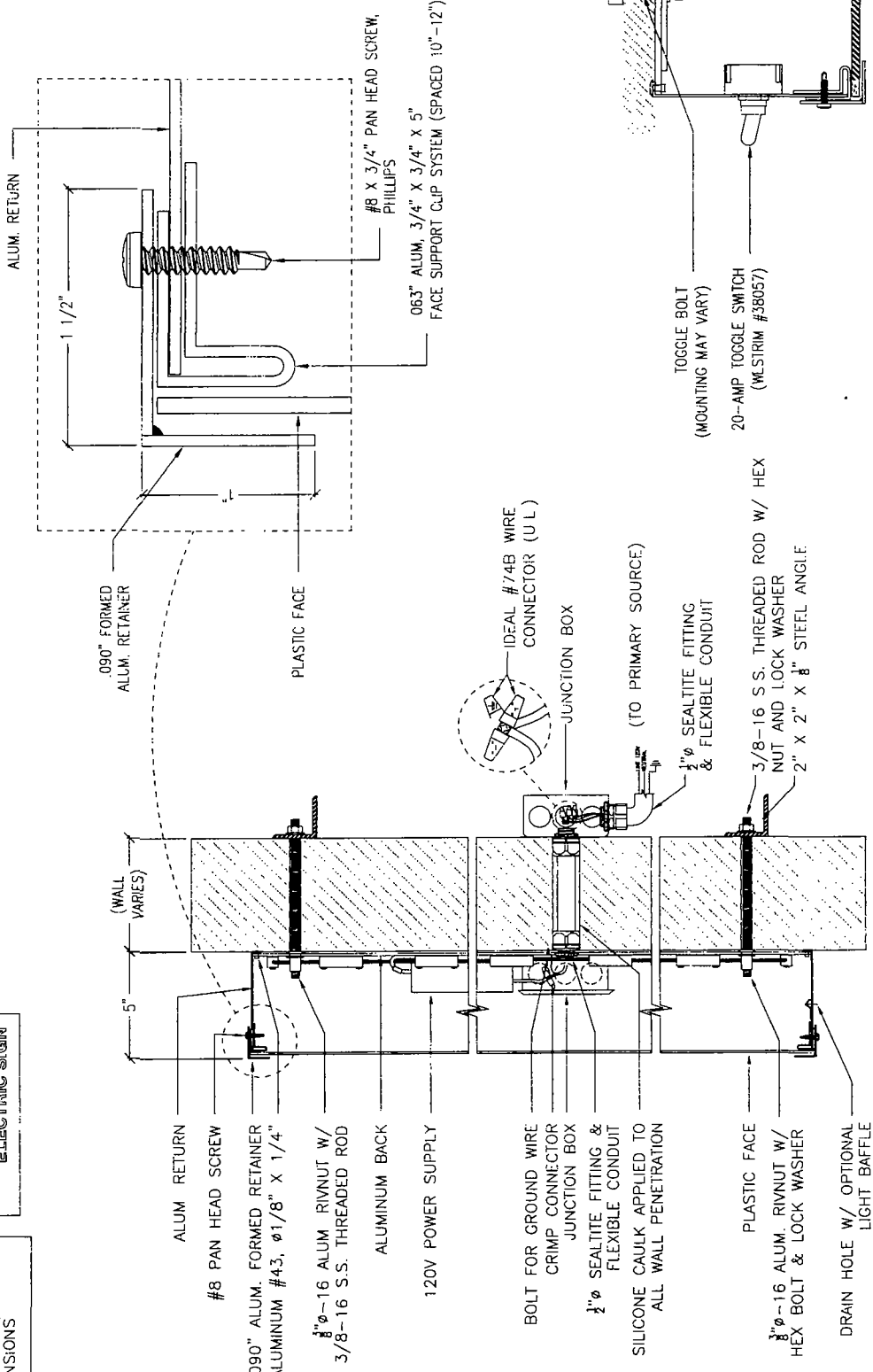
FILE PATH: Active\ACCOUNTS\LA FITNESS\Locations\3101\_1138\_Chicago\_IL

DRAWINGS PREPARED BY:

Drawings are the exclusive property of Icon Identity Solutions Inc.  
Any unauthorized use or duplication is not permitted.

USE WHITE SILICONE TO CONCEAL LIGHT LEAKS

TOLERANCE: ± 1/16" ON ALL DIMENSIONS



**SECTION: SELF-CONTAINED W/ RETAINER**

**SECTION: SWITCH**

A

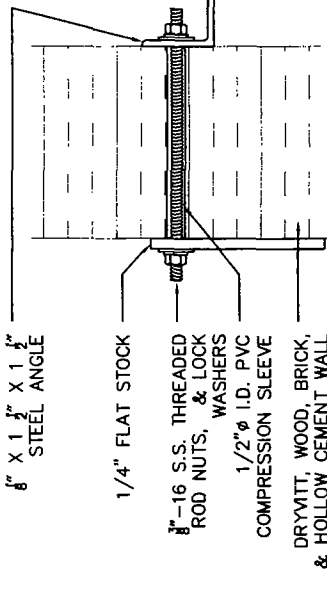
B

SCALE: 1-1/2"=1'-0"

SCALE: 3"=1'-0"

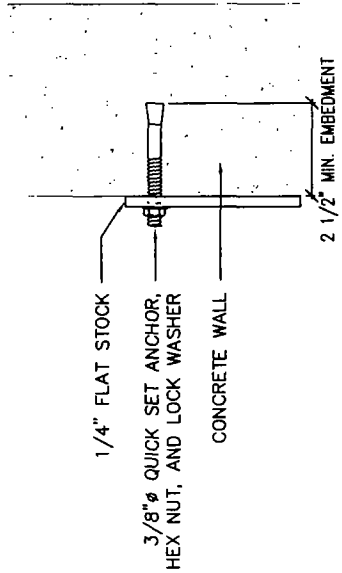
Rev #	Rev #	Date	Drawn By	Revision Description
Rev 1	154653	08/08/13	DR	Added detail panel to sign 4
Rev 2	000000	00/00/00	XXX	XXX
Rev 3	000000	00/00/00	XXX	XXX
Rev 4	000000	00/00/00	XXX	XXX
Rev 5	000000	00/00/00	XXX	XXX
Rev 6	000000	00/00/00	XXX	XXX

FILE PATH: Active\ACCOUNTS\LA FITNESS\Locations\3101\_1138\_Chicago\_IL



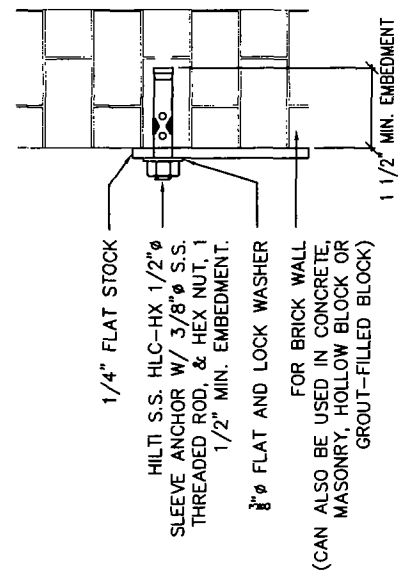
**A** **THREADED ROD W/ ALUM. ANGLE**

SCALE: N.T.S.



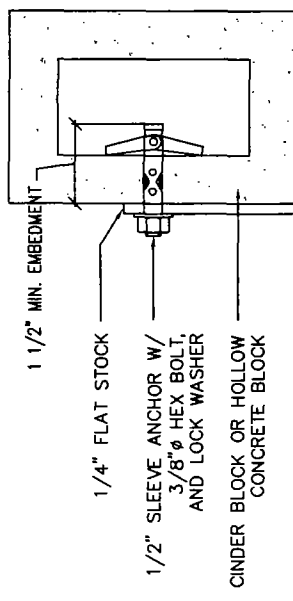
**C** **QUICK SETS**

SCALE: N.T.S.



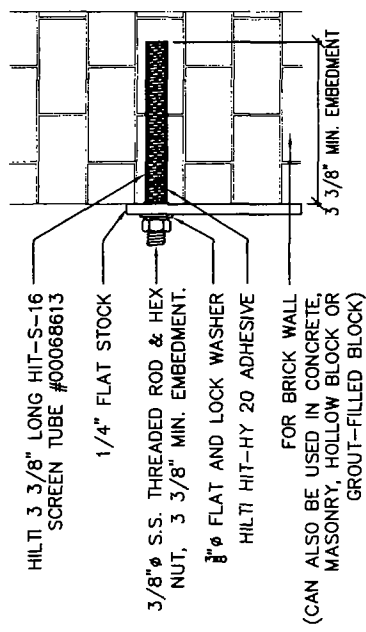
**E** **HILTI SLEEVE ANCHOR**

SCALE: N.T.S.



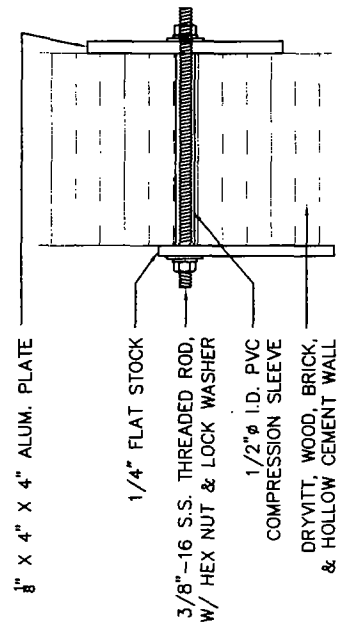
**B** **SLEEVE ANCHOR BOLT**

SCALE: N.T.S.



**D** **HILTI HIT-HY SYSTEM**

SCALE: N.T.S.



**F** **THRU WALL**

SCALE: N.T.S.

**LETTER MOUNTING OPTIONS**

Location: South Martin Luther King Drive, Chicago, IL

Proj #: 3101, Loc #: 1138, Date: 08/07/13  
 Rev #: 154171, Drawn By: KWK, Page #: 12

Rev #	Rev #	Date	Req. By	Drawn By	Revision Description
Rev 1	154653	08/08/13	DR	KWK	Added bkgrd. panel to sign 4
Rev 2	000000	00/00/00	XXX	XXX	XXX
Rev 3	000000	00/00/00	XXX	XXX	XXX
Rev 4	000000	00/00/00	XXX	XXX	XXX
Rev 5	000000	00/00/00	XXX	XXX	XXX
Rev 6	000000	00/00/00	XXX	XXX	XXX

FILE PATH: Active\ACCOUNTS\LA\FITNESS\Locations\3101\_1138\_Chicago\_IL