



City of Chicago



O2017-3205

Office of the City Clerk

Document Tracking Sheet

Meeting Date:	4/19/2017
Sponsor(s):	Misc. Transmittal
Type:	Ordinance
Title:	Zoning Reclassification Map No. 6-H at 2315 W 24th Pl - App No. 19195T1
Committee(s) Assignment:	Committee on Zoning, Landmarks and Building Standards

19195 T1
INTRO. DATE
APRIL 19, 2017

ORDINANCE

BE IT ORDAINED BY THE CITY COUNCIL OF THE CITY OF CHICAGO:

SECTION 1. Title 17 of the Municipal Code of Chicago, the Chicago Zoning Ordinance, is hereby amended by changing all of the RS-3 Residential Single-Unit (Detached House) District symbols and indications as shown on Map No. 6-H in the area bounded by

A line 168.08 feet West of and parallel to South Oakley Avenue, West 24th Place, the public alley next West of and parallel to South Oakley Avenue, the public alley next South of and parallel to West 24th Place

to those of a RM6 Residential Multi-Unit District.

SECTION 2. This ordinance takes effect after its passage and due publication.

Common Address of Property: 2315 West 24th Place, Chicago, IL 60608.

NARRATIVE
2315 West 24th Place
RS-3 to RM6

Applicant seeks to renovate an existing school in order construct 8 dwelling units in a 3 story building 32 feet in height with 3 interior parking spaces.

FAR	2.54
Lot Area	5,975.863 square feet
Building Area	15,224.11 square feet
No. of Units	8
Building Height	32 feet
Front Setback	Zero
Rear Setback	Zero
West Side Setback	Zero
East Side Setback	Zero
Parking	3 Interior Spaces

FINAL FOR PUBLICATION

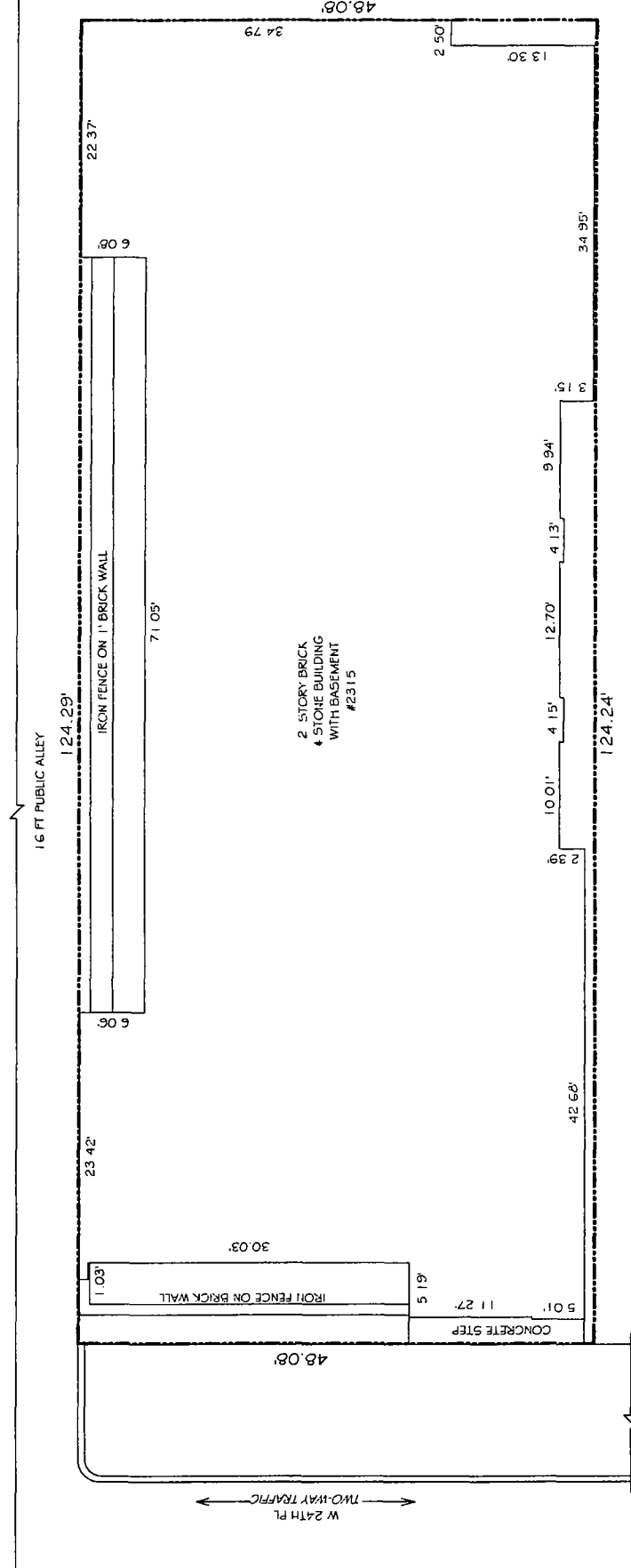
NEW 8 D.U. RESIDENCE WITH 3-CAR PARKING ON BASEMENT ON EXISTING SCHOOL

2315 W 24TH PL CHICAGO, I L 60608



ARCHITECTONIC SOLUTIONS, INC
 241 W Division St
 Chicago, IL 60622
 312.374.0094
 projects@architectonicsolutions.com

FINAL FOR APPLICATION
 16 FT PUBLIC ALLEY



① EXISTING SITE PLAN
 1" = 10'-0"

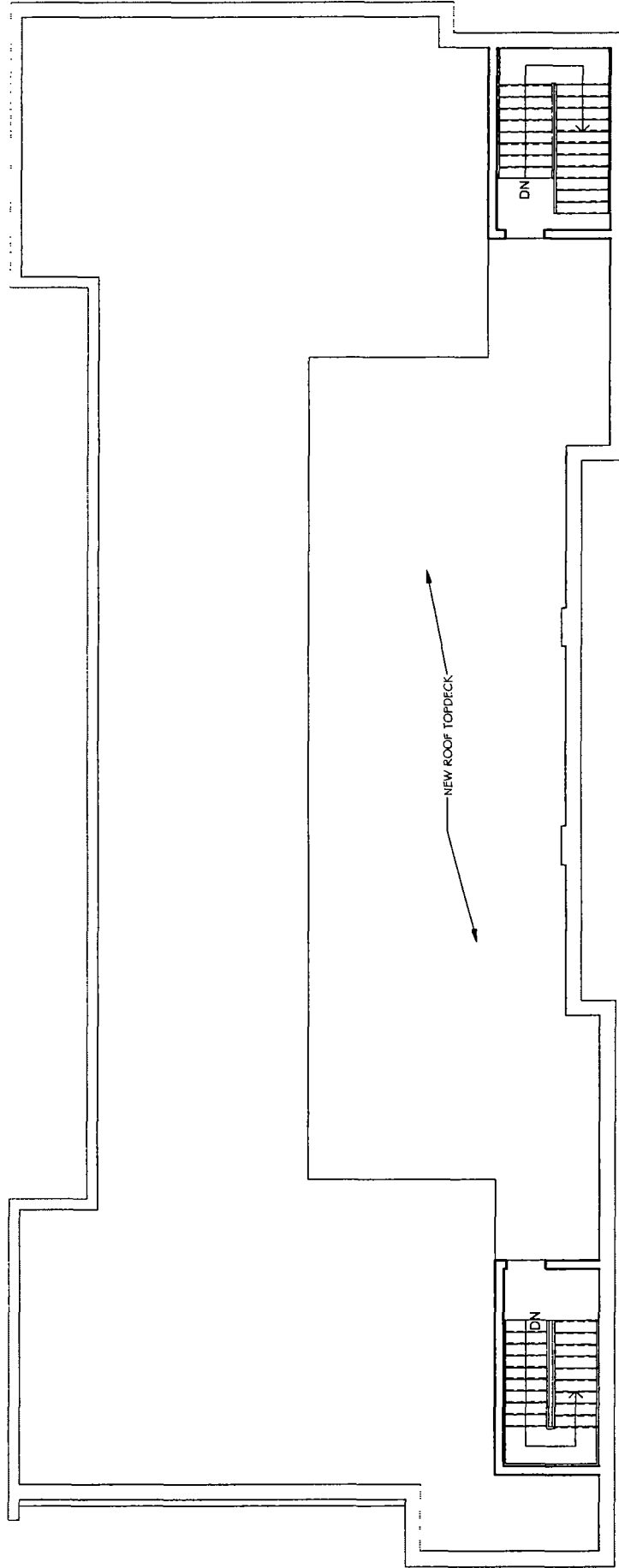
THE UNIVERSITY OF CHICAGO

1
2
3
4
5
6
7
8
9
10
11
12
13
14
15
16
17
18
19
20
21
22
23
24
25
26
27
28
29
30
31
32
33
34
35
36
37
38
39
40
41
42
43
44
45
46
47
48
49
50
51
52
53
54
55
56
57
58
59
60
61
62
63
64
65
66
67
68
69
70
71
72
73
74
75
76
77
78
79
80
81
82
83
84
85
86
87
88
89
90
91
92
93
94
95
96
97
98
99
100



ARCHITECTONIC SOLUTIONS INC.
2511 W. DuSable St.
Chicago, IL 60612
Tel: 312.467.8888
Program: www.asiinc.com

FINAL FOR PUBLICATION



① Roof Top Level
1/8" = 1'-0"

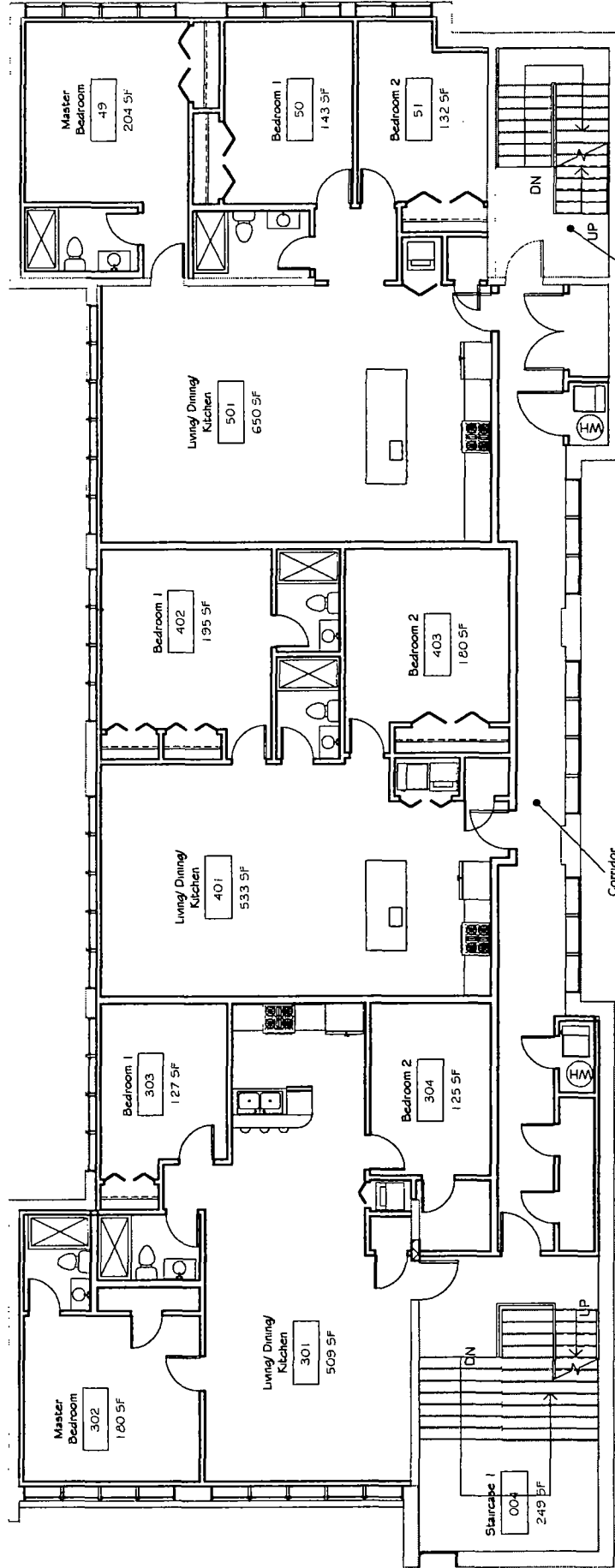
A101

CHINA UNIVERSITY OF PETROLEUM



ARCHITECTONIC SOLUTIONS INC
 2541 W Division St
 Chicago, IL 60622
 312.735.4878
 projects@architectonicsolutions.com

FINAL FOR PUBLICATION



TOTAL BLDG PER FLOOR- 5,036 SQFT
 UNIT 3 & 6- 1,275 SQFT
 UNIT 4 & 7- 1,175 SQFT
 UNIT 5 & 8- 1,485 SQFT

Staircase 2
 005
 94 SF

Corridor
 006
 331 SF

Staircase 1
 004
 249 SF

② Proposed 1st & 2nd Floor Level
 1/8" = 1'-0"

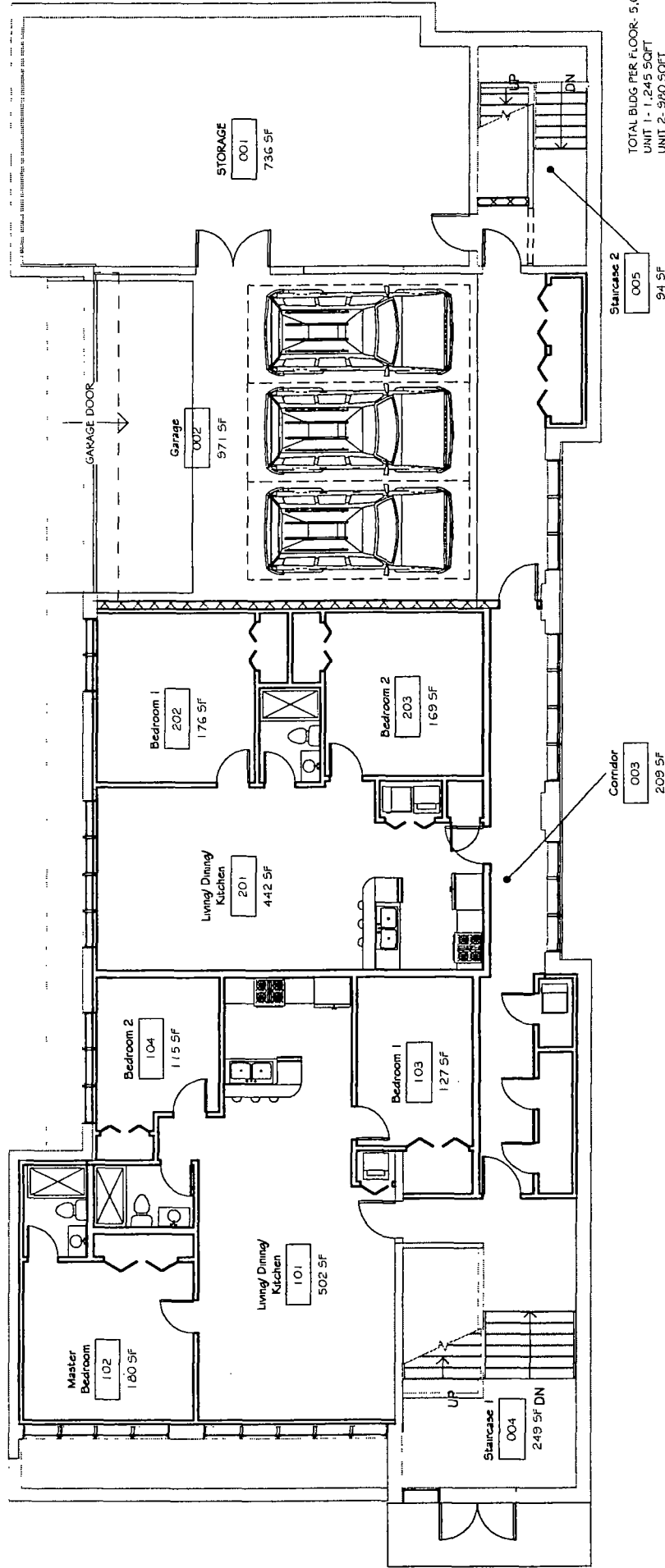
A102

EMERGENCY CONTACTS



ARCHITECTONIC SOLUTIONS INC
 2511 W Division St
 Chicago, IL 60622
 312.752.6072
 projects@architectonicsolutions.com

FINAL FOR PUBLICATION



TOTAL BLDG PER FLOOR- 5,036 SQFT
 UNIT 1 - 1,245 SQFT
 UNIT 2 - 980 SQFT



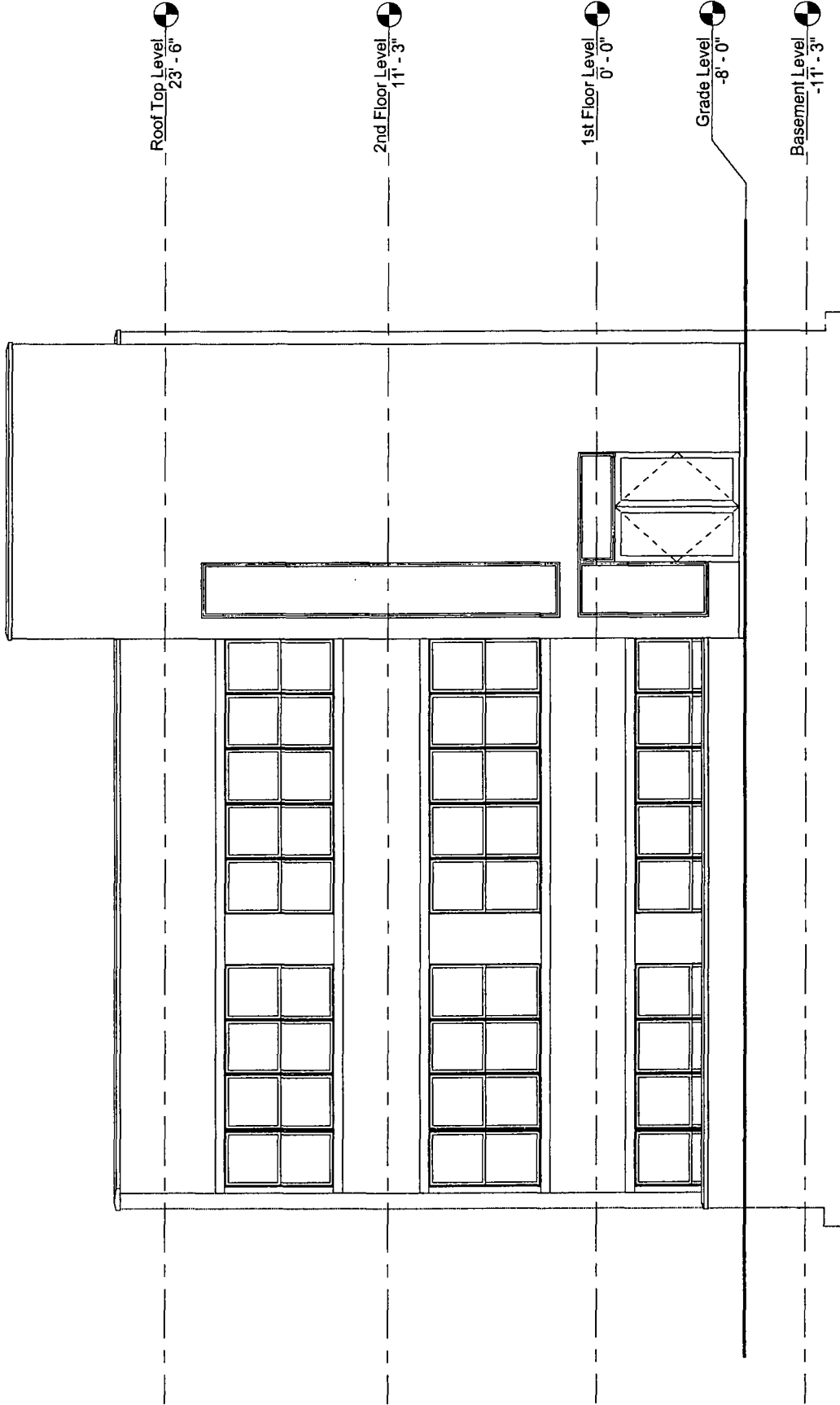
3 Proposed Basement Level
 1/8" = 1'-0"

A103



ARCHITECTONIC SOLUTIONS, INC.
 2541 W. Duane St.
 Chicago, IL 60622
 112.373.4078
 projectmanager@asi-llc.com

FINAL FOR PRODUCTION



① Proposed Front Elevation
 3/16" = 1'-0"

GRAPHIC SCALE

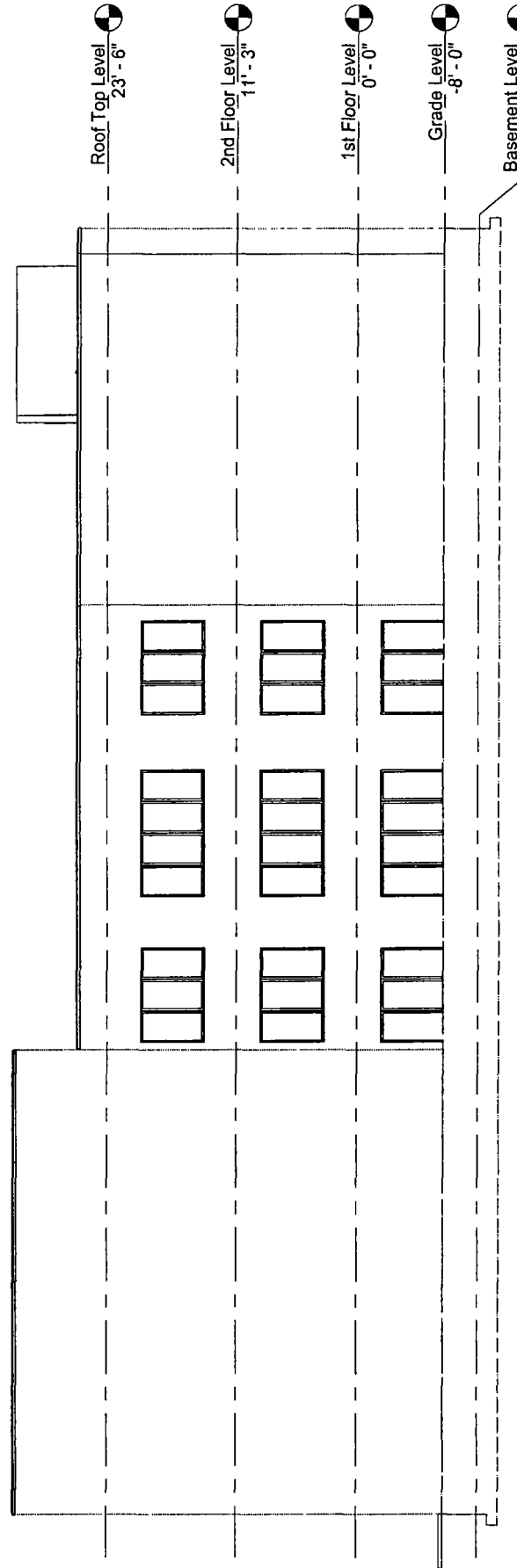
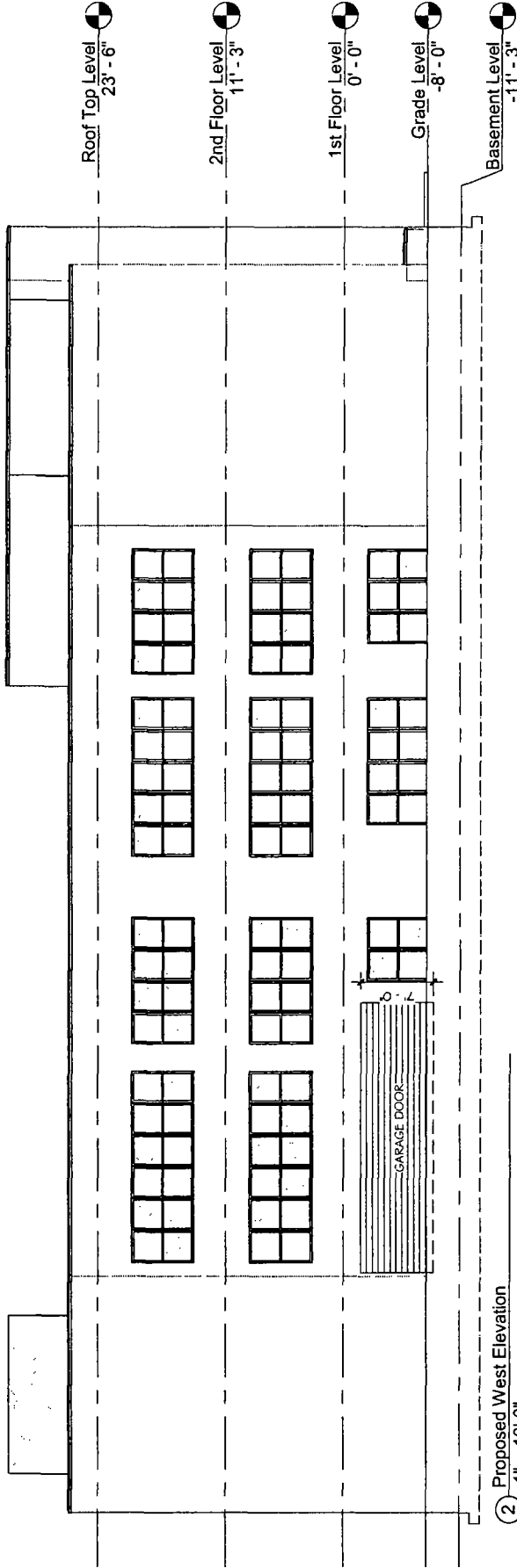


2010 10 10 10:10:10



ARCHITECTONIC SOLUTIONS, INC
 241 N. Duane St.
 Chicago, IL 06122
 112.733.6078
 projects@asiarch.com

FINAL FOR SUBMITTAL



GRAPHIC SCALE



FIG. 1. LOW TEMPERATURE