



City of Chicago



O2016-7271

Office of the City Clerk

Document Tracking Sheet

Meeting Date:	9/29/2016
Sponsor(s):	Reilly (42)
Type:	Ordinance
Title:	Grant(s) of privilege in public way for Celeste
Committee(s) Assignment:	Committee on Transportation and Public Way

ORDINANCE
CELESTE
Acct. No. 210821 - 2
Permit No. 1124109

Be It Ordained by the City Council of the City of Chicago:

SECTION 1. Permission and authority are hereby given and granted to CELESTE, upon the terms and subject to the conditions of this ordinance to maintain and use one (1) sign(s) projecting over the public right-of-way attached to its premises known as 111 W. Hubbard St..

Said sign structure(s) measures as follows; along W. Hubbard Street:

One (1) at two point five (2.5) feet in length, one point two five (1.25) feet in height and nine point three three (9.33) feet above grade level.

The location of said privilege shall be as shown on prints kept on file with the Department of Business Affairs and Consumer Protection and the Office of the City Clerk.

Said privilege shall be constructed in accordance with plans and specifications approved by the Department of Transportation (Division of Project Development) and Zoning Department - Signs.

This grant of privilege in the public way shall be subject to the provisions of Section 10-28-015 and all other required provisions of the Municipal Code of Chicago.

The grantee shall pay to the City of Chicago as compensation for the privilege #1124109 herein granted the sum of one hundred (\$100.00) per annum in advance.

A 25% penalty will be added for payments received after due date.

The permit holder agrees to hold the City of Chicago harmless for any damage, relocation or replacement costs associated with damage, relocation or removal of private property caused by the City performing work in the public way.

Authority herein given and granted for a period of five (5) years from and after Date of Passage.

Alderman _____

Brendan Reilly 42nd Ward

By signing the Customer Acceptance on this print, I understand that I am accepting all aspects of this drawing. This includes artwork, specifications, dimensions, spelling, and all other representations herein. I also understand that color reproductions on this print are approximate and may not match manufacturer's samples exactly.

Customer Acceptance SIGNATURE

DATE



IF REQUIRED: Landlord Acceptance SIGNATURE

DATE

L.S.G. SALES INITIALS

DATE

City of Chicago Permit Drawing

Landmark Sign Group

7424 Industrial Avenue
Chicago, IL 60634
phone 219 782 9577
fax 219 752 4259
www.landmarksign.com

PRINT #
ML-22926-3CP

MIKE LANOVICH
LSC SALES REPRESENTATIVE

06.07.16

DATE

CELESTE

CLIENT NAME

111 W HUBBARD ST
CHICAGO, IL

JOB LOCATION

J. 1 1/2 - 1-0

DRAWN BY SCALE

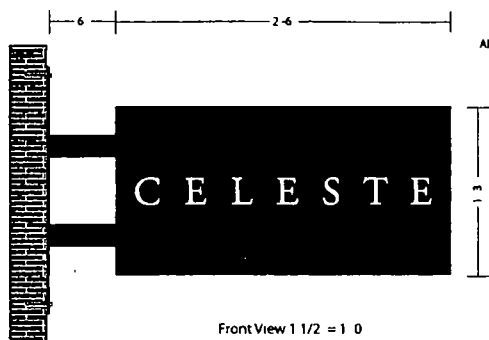
REVISIONS

NO.	DESCRIPTION
1	

Designed
for
110 Volts

Electrical Connection will be
Visible within 15 FT. of Line of
Intersection.
Second Trip will be Charged
at Time & Material.

THIS DRAWING IS THE PROPERTY OF
LANDMARK SIGN GROUP, INC.
NO REPRODUCTION OR COPIES MAY BE MADE
WITHOUT THE WRITTEN CONSENT OF
LANDMARK SIGN GROUP, INC.
REPRODUCTION OR COPIES WILL BE CHARGED
FOR ANY VIOLATION OF THIS DRAWING.

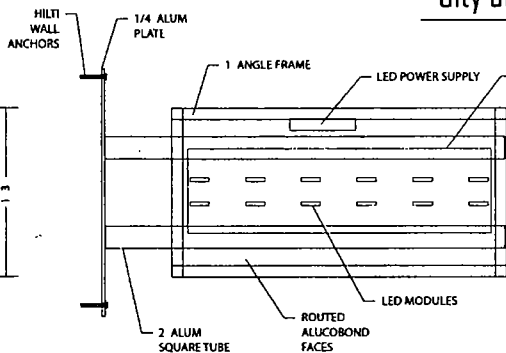


Front View 1 1/2 = 1 0

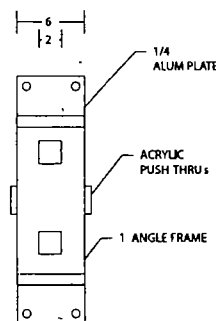
▶ ONE DOUBLE FACE SIGN/ INTERIOR ILLUMINATED WITH LED w/ ROUTED ALUCOBOND WITH 3/4" CLEAR ACRYLIC PUSH THRU COPY/ WITH TRANSLUCENT VINYL ON FACES/ MOUNTED TO FASCIA WITH TUBES AND PLATE

○ SIGNCASE and MOUNTING BRACKET - MATTHEWS MP59647 BLACK IS BACK COPY - 1 CLEAR ACRYLIC PUSHTHRU with 230-131 METALLIC GOLD TRANSLUCENT VINYL ON FACES ILLUMINATION = WHITE LED:

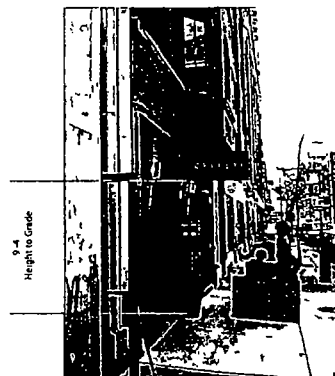
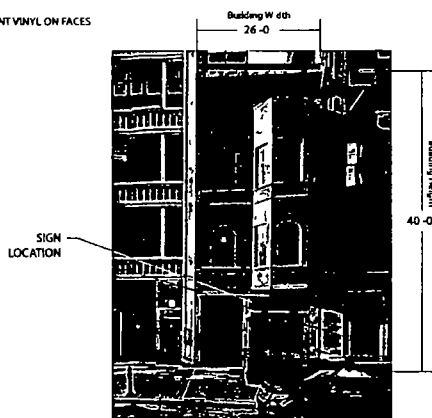
#69080	Landmark Sign Group
Sign Type	Blade
Overall Size	3'-0" x 1'-3"
Square Footage	3.75 SF
Approx Weight	40 lbs
Volt/Ampere Load	80A @120v AC
Branch Circuit(s) Required	1
Lamp	LED
Watts	88.00
Power Supplies	1



Construction View 1 1/2 = 1-0



Side View 1 1/2 = 1 0



Render NTS