



City of Chicago



Or2022-225

Office of the City Clerk

Document Tracking Sheet

Meeting Date:	9/21/2022
Sponsor(s):	Ramirez-Rosa (35)
Type:	Order
Title:	Issuance of permits for sign(s)/signboard(s) at 3390 N Avondale Ave
Committee(s) Assignment:	Committee on Zoning, Landmarks and Building Standards

CITY COUNCIL
COMMITTEE ON ZONING, LANDMARKS AND BUILDING STANDARDS

COUNCIL ORDER

RE: Approval of sign over 100 square feet in area or over 24 feet above grade

ORDERED, that the City Council hereby approves the following sign application submitted by:

Applicant*: NORTHEASTERN ILLINOIS UNIVERSITY

(* The Applicant is the owner of the real property or the business tenant of the real property. Do not list the sign contractor, sign erector, sign company or advertising entity in the above space.)

This Order approves the following sign in accordance with Municipal Code of Chicago Section 13-20-680:

Address of Sign: 3390 NORTH AVONDALE AVENUE Chicago, IL 60618

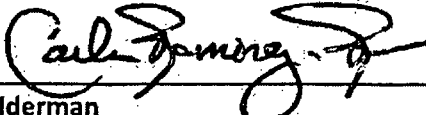
Zoning District: PD1200

DOB Sign Permit Application #: 100977411

Sign Details:

1. On-premise OR Off-premise
2. Static sign OR Dynamic-image display sign
3. Number of sign faces 1
4. Projecting over the public way NO (Yes or No) If yes, Public Way Use #: _____
5. Dimensions: Length 24 feet 0 inches Height 11 feet 3 inches
Total square feet in area: 270 feet 0 inches
6. Height above grade: 20 feet 3.75 inches
7. Elevation (side of building or lot where the sign will be erected): WEST LOT OF PROPERTY
8. Name of Sign Contractor/Erector: POBLOCKI SIGN COMPANY

To be legal, such sign shall comply with all provisions of Title 17 of the Chicago Municipal Code ("Zoning Ordinance") and all other provisions of the Municipal Code governing the permitting, construction and maintenance and removal of signs and sign structures. Failure of the applicant and the applicant's successors to comply shall be grounds for invalidation or revocation of the sign permit.


Alderman

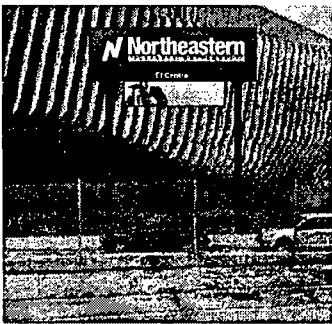
35
Ward

SIGN SPECIFICATIONS

[A] - CABINET
 Lighting: Lit
 Description: SignComp Bleed Frame Cover
 Material: Flex Face (Digital Print)
 Depth: 23 1/2"
 Cabinet Color: Paint Black (satin)

[B] - EDS
 Manufacturer: Daktronics
 Model: G56 Series (Full Color)
 Resolution: 15 85mm
 Matrix: 60 x 275
 Installation: Built into Pylon Structure

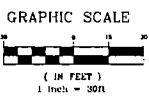
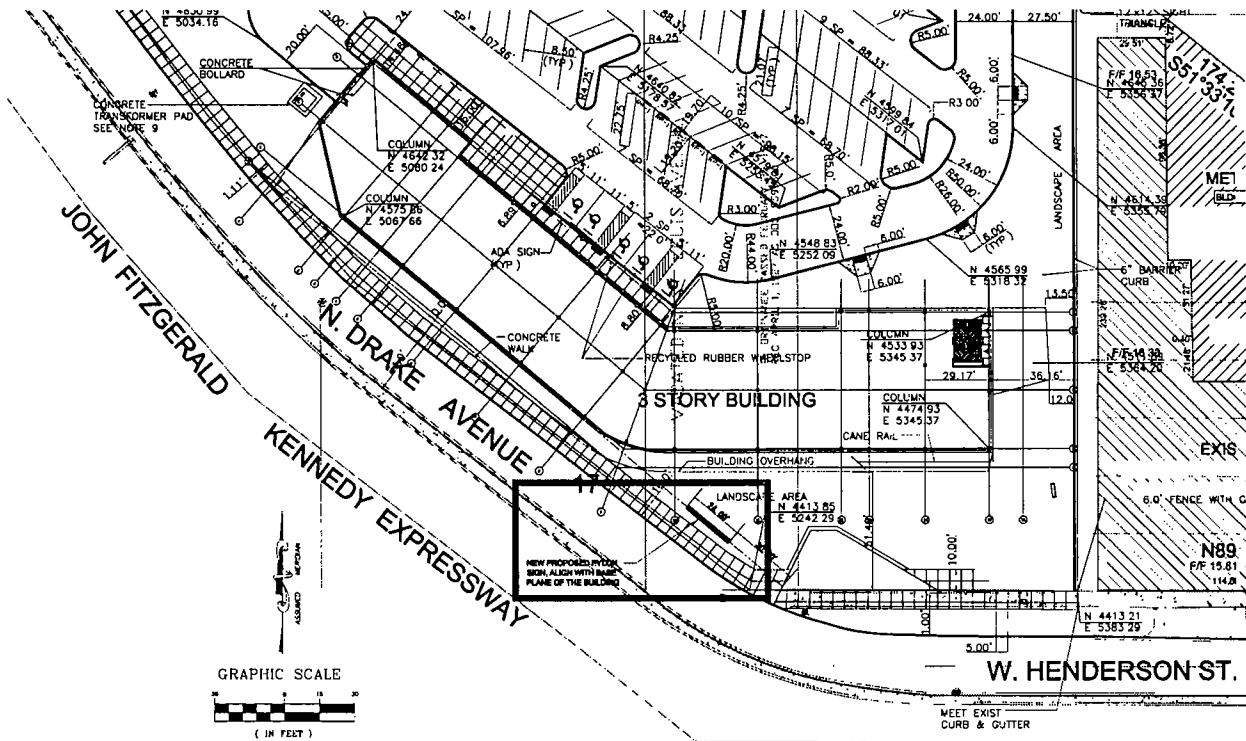
[C] - POLES
 Material: Steel Pipe
 Shape: Round
 Size: 12 75" O.D. x 3/8 THK
 Color: Black (satin)
 Installation: New Structure



Proposed Location



0.22, 1.43, 1.84, 2.44, 3.01, 3.58, 4.15, 4.72, 5.29, 5.86, 6.43, 7.00, 7.57, 8.14, 8.71, 9.28, 9.85, 10.42, 11.00, 11.57, 12.14, 12.71, 13.28, 13.85, 14.42, 15.00, 15.57, 16.14, 16.71, 17.28, 17.85, 18.42, 19.00, 19.57, 20.14, 20.71, 21.28, 21.85, 22.42, 23.00, 23.57, 24.14, 24.71, 25.28, 25.85, 26.42, 27.00, 27.57, 28.14, 28.71, 29.28, 29.85, 30.42, 31.00, 31.57, 32.14, 32.71, 33.28, 33.85, 34.42, 35.00, 35.57, 36.14, 36.71, 37.28, 37.85, 38.42, 39.00, 39.57, 40.14, 40.71, 41.28, 41.85, 42.42, 43.00, 43.57, 44.14, 44.71, 45.28, 45.85, 46.42, 47.00, 47.57, 48.14, 48.71, 49.28, 49.85, 50.42, 51.00, 51.57, 52.14, 52.71, 53.28, 53.85, 54.42, 55.00, 55.57, 56.14, 56.71, 57.28, 57.85, 58.42, 59.00, 59.57, 60.14, 60.71, 61.28, 61.85, 62.42, 63.00, 63.57, 64.14, 64.71, 65.28, 65.85, 66.42, 67.00, 67.57, 68.14, 68.71, 69.28, 69.85, 70.42, 71.00, 71.57, 72.14, 72.71, 73.28, 73.85, 74.42, 75.00, 75.57, 76.14, 76.71, 77.28, 77.85, 78.42, 79.00, 79.57, 80.14, 80.71, 81.28, 81.85, 82.42, 83.00, 83.57, 84.14, 84.71, 85.28, 85.85, 86.42, 87.00, 87.57, 88.14, 88.71, 89.28, 89.85, 90.42, 91.00, 91.57, 92.14, 92.71, 93.28, 93.85, 94.42, 95.00, 95.57, 96.14, 96.71, 97.28, 97.85, 98.42, 99.00, 99.57, 100.14, 100.71, 101.28, 101.85, 102.42, 103.00, 103.57, 104.14, 104.71, 105.28, 105.85, 106.42, 107.00, 107.57, 108.14, 108.71, 109.28, 109.85, 110.42, 111.00, 111.57, 112.14, 112.71, 113.28, 113.85, 114.42, 115.00, 115.57, 116.14, 116.71, 117.28, 117.85, 118.42, 119.00, 119.57, 120.14, 120.71, 121.28, 121.85, 122.42, 123.00, 123.57, 124.14, 124.71, 125.28, 125.85, 126.42, 127.00, 127.57, 128.14, 128.71, 129.28, 129.85, 130.42, 131.00, 131.57, 132.14, 132.71, 133.28, 133.85, 134.42, 135.00, 135.57, 136.14, 136.71, 137.28, 137.85, 138.42, 139.00, 139.57, 140.14, 140.71, 141.28, 141.85, 142.42, 143.00, 143.57, 144.14, 144.71, 145.28, 145.85, 146.42, 147.00, 147.57, 148.14, 148.71, 149.28, 149.85, 150.42, 151.00, 151.57, 152.14, 152.71, 153.28, 153.85, 154.42, 155.00, 155.57, 156.14, 156.71, 157.28, 157.85, 158.42, 159.00, 159.57, 160.14, 160.71, 161.28, 161.85, 162.42, 163.00, 163.57, 164.14, 164.71, 165.28, 165.85, 166.42, 167.00, 167.57, 168.14, 168.71, 169.28, 169.85, 170.42, 171.00, 171.57, 172.14, 172.71, 173.28, 173.85, 174.42, 175.00, 175.57, 176.14, 176.71, 177.28, 177.85, 178.42, 179.00, 179.57, 180.14, 180.71, 181.28, 181.85, 182.42, 183.00, 183.57, 184.14, 184.71, 185.28, 185.85, 186.42, 187.00, 187.57, 188.14, 188.71, 189.28, 189.85, 190.42, 191.00, 191.57, 192.14, 192.71, 193.28, 193.85, 194.42, 195.00, 195.57, 196.14, 196.71, 197.28, 197.85, 198.42, 199.00, 199.57, 200.14, 200.71, 201.28, 201.85, 202.42, 203.00, 203.57, 204.14, 204.71, 205.28, 205.85, 206.42, 207.00, 207.57, 208.14, 208.71, 209.28, 209.85, 210.42, 211.00, 211.57, 212.14, 212.71, 213.28, 213.85, 214.42, 215.00, 215.57, 216.14, 216.71, 217.28, 217.85, 218.42, 219.00, 219.57, 220.14, 220.71, 221.28, 221.85, 222.42, 223.00, 223.57, 224.14, 224.71, 225.28, 225.85, 226.42, 227.00, 227.57, 228.14, 228.71, 229.28, 229.85, 230.42, 231.00, 231.57, 232.14, 232.71, 233.28, 233.85, 234.42, 235.00, 235.57, 236.14, 236.71, 237.28, 237.85, 238.42, 239.00, 239.57, 240.14, 240.71, 241.28, 241.85, 242.42, 243.00, 243.57, 244.14, 244.71, 245.28, 245.85, 246.42, 247.00, 247.57, 248.14, 248.71, 249.28, 249.85, 250.42, 251.00, 251.57, 252.14, 252.71, 253.28, 253.85, 254.42, 255.00, 255.57, 256.14, 256.71, 257.28, 257.85, 258.42, 259.00, 259.57, 260.14, 260.71, 261.28, 261.85, 262.42, 263.00, 263.57, 264.14, 264.71, 265.28, 265.85, 266.42, 267.00, 267.57, 268.14, 268.71, 269.28, 269.85, 270.42, 271.00, 271.57, 272.14, 272.71, 273.28, 273.85, 274.42, 275.00, 275.57, 276.14, 276.71, 277.28, 277.85, 278.42, 279.00, 279.57, 280.14, 280.71, 281.28, 281.85, 282.42, 283.00, 283.57, 284.14, 284.71, 285.28, 285.85, 286.42, 287.00, 287.57, 288.14, 288.71, 289.28, 289.85, 290.42, 291.00, 291.57, 292.14, 292.71, 293.28, 293.85, 294.42, 295.00, 295.57, 296.14, 296.71, 297.28, 297.85, 298.42, 299.00, 299.57, 300.14, 300.71, 301.28, 301.85, 302.42, 303.00, 303.57, 304.14, 304.71, 305.28, 305.85, 306.42, 307.00, 307.57, 308.14, 308.71, 309.28, 309.85, 310.42, 311.00, 311.57, 312.14, 312.71, 313.28, 313.85, 314.42, 315.00, 315.57, 316.14, 316.71, 317.28, 317.85, 318.42, 319.00, 319.57, 320.14, 320.71, 321.28, 321.85, 322.42, 323.00, 323.57, 324.14, 324.71, 325.28, 325.85, 326.42, 327.00, 327.57, 328.14, 328.71, 329.28, 329.85, 330.42, 331.00, 331.57, 332.14, 332.71, 333.28, 333.85, 334.42, 335.00, 335.57, 336.14, 336.71, 337.28, 337.85, 338.42, 339.00, 339.57, 340.14, 340.71, 341.28, 341.85, 342.42, 343.00, 343.57, 344.14, 344.71, 345.28, 345.85, 346.42, 347.00, 347.57, 348.14, 348.71, 349.28, 349.85, 350.42, 351.00, 351.57, 352.14, 352.71, 353.28, 353.85, 354.42, 355.00, 355.57, 356.14, 356.71, 357.28, 357.85, 358.42, 359.00, 359.57, 360.14, 360.71, 361.28, 361.85, 362.42, 363.00, 363.57, 364.14, 364.71, 365.28, 365.85, 366.42, 367.00, 367.57, 368.14, 368.71, 369.28, 369.85, 370.42, 371.00, 371.57, 372.14, 372.71, 373.28, 373.85, 374.42, 375.00, 375.57, 376.14, 376.71, 377.28, 377.85, 378.42, 379.00, 379.57, 380.14, 380.71, 381.28, 381.85, 382.42, 383.00, 383.57, 384.14, 384.71, 385.28, 385.85, 386.42, 387.00, 387.57, 388.14, 388.71, 389.28, 389.85, 390.42, 391.00, 391.57, 392.14, 392.71, 393.28, 393.85, 394.42, 395.00, 395.57, 396.14, 396.71, 397.28, 397.85, 398.42, 399.00, 399.57, 400.14, 400.71, 401.28, 401.85, 402.42, 403.00, 403.57, 404.14, 404.71, 405.28, 405.85, 406.42, 407.00, 407.57, 408.14, 408.71, 409.28, 409.85, 410.42, 411.00, 411.57, 412.14, 412.71, 413.28, 413.85, 414.42, 415.00, 415.57, 416.14, 416.71, 417.28, 417.85, 418.42, 419.00, 419.57, 420.14, 420.71, 421.28, 421.85, 422.42, 423.00, 423.57, 424.14, 424.71, 425.28, 425.85, 426.42, 427.00, 427.57, 428.14, 428.71, 429.28, 429.85, 430.42, 431.00, 431.57, 432.14, 432.71, 433.28, 433.85, 434.42, 435.00, 435.57, 436.14, 436.71, 437.28, 437.85, 438.42, 439.00, 439.57, 440.14, 440.71, 441.28, 441.85, 442.42, 443.00, 443.57, 444.14, 444.71, 445.28, 445.85, 446.42, 447.00, 447.57, 448.14, 448.71, 449.28, 449.85, 450.42, 451.00, 451.57, 452.14, 452.71, 453.28, 453.85, 454.42, 455.00, 455.57, 456.14, 456.71, 457.28, 457.85, 458.42, 459.00, 459.57, 460.14, 460.71, 461.28, 461.85, 462.42, 463.00, 463.57, 464.14, 464.71, 465.28, 465.85, 466.42, 467.00, 467.57, 468.14, 468.71, 469.28, 469.85, 470.42, 471.00, 471.57, 472.14, 472.71, 473.28, 473.85, 474.42, 475.00, 475.57, 476.14, 476.71, 477.28, 477.85, 478.42, 479.00, 479.57, 480.14, 480.71, 481.28, 481.85, 482.42, 483.00, 483.57, 484.14, 484.71, 485.28, 485.85, 486.42, 487.00, 487.57, 488.14, 488.71, 489.28, 489.85, 490.42, 491.00, 491.57, 492.14, 492.71, 493.28, 493.85, 494.42, 495.00, 495.57, 496.14, 496.71, 497.28, 497.85, 498.42, 499.00, 499.57, 500.14, 500.71, 501.28, 501.85, 502.42, 503.00, 503.57, 504.14, 504.71, 505.28, 505.85, 506.42, 507.00, 507.57, 508.14, 508.71, 509.28, 509.85, 510.42, 511.00, 511.57, 512.14, 512.71, 513.28, 513.85, 514.42, 515.00, 515.57, 516.14, 516.71, 517.28, 517.85, 518.42, 519.00, 519.57, 520.14, 520.71, 521.28, 521.85, 522.42, 523.00, 523.57, 524.14, 524.71, 525.28, 525.85, 526.42, 527.00, 527.57, 528.14, 528.71, 529.28, 529.85, 530.42, 531.00, 531.57, 532.14, 532.71, 533.28, 533.85, 534.42, 535.00, 535.57, 536.14, 536.71, 537.28, 537.85, 538.42, 539.00, 539.57, 540.14, 540.71, 541.28, 541.85, 542.42, 543.00, 543.57, 544.14, 544.71, 545.28, 545.85, 546.42, 547.00, 547.57, 548.14, 548.71, 549.28, 549.85, 550.42, 551.00, 551.57, 552.14, 552.71, 553.28, 553.85, 554.42, 555.00, 555.57, 556.14, 556.71, 557.28, 557.85, 558.42, 559.00, 559.57, 560.14, 560.71, 561.28, 561.85, 562.42, 563.00, 563.57, 564.14, 564.71, 565.28, 565.85, 566.42, 567.00, 567.57, 568.14, 568.71, 569.28, 569.85, 570.42, 571.00, 571.57, 572.14, 572.71, 573.28, 573.85, 574.42, 575.00, 575.57, 576.14, 576.71, 577.28, 577.85, 578.42, 579.00, 579.57, 580.14, 580.71, 581.28, 581.85, 582.42, 583.00, 583.57, 584.14, 584.71, 585.28, 585.85, 586.42, 587.00, 587.57, 588.14, 588.71, 589.28, 589.85, 590.42, 591.00, 591.57, 592.14, 592.71, 593.28, 593.85, 594.42, 595.00, 595.57, 596.14, 596.71, 597.28, 597.85, 598.42, 599.00, 599.57, 600.14, 600.71, 601.28, 601.85, 602.42, 603.00, 603.57, 604.14, 604.71, 605.28, 605.85, 606.42, 607.00, 607.57, 608.14, 608.71, 609.28, 609.85, 610.42, 611.00, 611.57, 612.14, 612.71, 613.28, 613.85, 614.42, 615.00, 615.57, 616.14, 616.71, 617.28, 617.85, 618.42, 619.00, 619.57, 620.14, 620.71, 621.28, 621.85, 622.42, 623.00, 623.57, 624.14, 624.71, 625.28, 625.85, 626.42, 627.00, 627.57, 628.14, 628.71, 629.28, 629.85, 630.42, 631.00, 631.57, 632.14, 632.71, 633.28, 633.85, 634.42, 635.00, 635.57, 636.14, 636.71, 637.28, 637.85, 638.42, 639.00, 639.57, 640.14, 640.71, 641.28, 641.85, 642.42, 643.00, 643.57, 644.14, 644.71, 645.28, 645.85, 646.42, 647.00, 647.57, 648.14, 648.71, 649.28, 649.85, 650.42, 651.00, 651.57, 652.14, 652.71, 653.28, 653.85, 654.42, 655.00, 655.57, 656.14, 656.71, 657.28, 657.85, 658.42, 659.00, 659.57, 660.14, 660.71, 661.28, 661.85, 662.42, 663.00, 663.57, 664.14, 664.71, 665.28, 665.85, 666.42, 667.00, 667.57, 668.14, 668.71, 669.28, 669.85, 670.42, 671.00, 671.57, 672.14, 672.71, 673.28, 673.85, 674.42, 675.00, 675.57, 676.14, 676.71, 677.28, 677.85, 678.42, 679.00, 679.57, 680.14, 680.71, 681.28, 681.85, 682.42, 683.00, 683.57, 684.14, 684.71, 685.28, 685.85, 686.42, 687.00, 687.57, 688.14, 688.71, 689.28, 689.85, 690.42, 691.00, 691.57, 692.14, 692.71, 693.28, 693.85, 694.42, 695.00, 695.57, 696.14, 696.71, 697.28, 697.85, 698.42, 699.00, 699.57, 700.14, 700.71, 701.28, 701.85, 702.42, 703.00, 703.57, 704.14, 704.71, 705.28, 705.85, 706.42, 707.00, 707.57, 708.14, 708.71, 709.28, 709.85, 710.42, 711.00, 711.57, 712.14, 712.71, 713.28, 713.85, 714.42, 715.00, 715.57, 716.14, 716.71, 717.28, 717.85, 718.42, 719.00, 719.57, 720.14, 720.71, 721.28, 721.85, 722.42, 723.00, 723.57, 724.14, 724.71, 725.28, 725.85, 726.42, 727.00, 727.57, 728.14, 728.71, 729.28, 729.85, 730.42, 731.00, 731.57, 732.14, 732.71, 733.28, 733.85, 734.42, 735.00, 735.57, 736.14, 736.71, 737.28, 737.85, 738.42, 739.00, 739.57, 740.14, 740.71, 741.28, 741.85, 742.42, 743.00, 743.57, 744.14, 744.71, 745.28, 745.85, 746.42, 747.00, 747.57, 748.14, 748.71, 749.28, 749.85, 750.42, 751.00, 751.57, 752.14, 752.71, 753.28, 753.85, 754.42, 755.00, 755.57, 756.14, 756.71, 757.28, 757.85, 758.42, 759.00, 759.57, 760.14, 760.71, 761.28, 761.85, 762.42, 763.00, 763.57, 764.14, 764.71, 765.28, 765.85, 766.42, 767.00, 767.57, 768.14, 768.71, 769.28, 769.85, 770.42, 771.00, 771.57, 772.14, 772.71, 773.28, 773.85, 774.42, 775.00, 775.57, 776.14, 776.71, 777.28, 777.85, 778.42, 779.00, 779.57, 780.14, 780.71, 781.28, 781.85, 782.42, 783.00, 783.57, 784.14, 784.71, 785.28, 785.85, 786.42, 787.00, 787.57, 788.14, 788.71, 789.28, 789.85, 790.42, 791.00, 791.57, 792.14, 792.71, 793.28, 793.85, 794.42, 795.00, 795.57, 796.14, 796.71, 797.28, 797.85, 798.42, 799.00, 799.57, 800.14, 800.71, 801.28, 801.85, 802.42, 803.00, 803.57, 804.14, 804.71, 805.28, 805.85, 806.42, 807.00, 807.57, 808.14, 808.71, 809.28, 809.85, 810.42, 811.00, 811.57, 812.14, 812.71, 813.28, 813.85, 814.42, 815.00, 815.57, 816.14, 816.71, 817.28, 817.85, 818.42, 819.00, 819.57, 820.14, 820.71, 821.28, 821.85, 822.42, 823.00, 823.57, 824.14, 824.71, 825.28, 825.85, 826.42, 827.00, 827.57, 828.14, 828.71, 829.28, 829.85, 830.42, 831.00, 831.57, 832.14, 832.71, 833.28, 833.85, 834.42, 835.00, 835.57, 836.14, 836.71, 837.28, 837.85, 838.42, 839.00, 839.57, 840.14, 840.71, 841.28, 841.85, 842



MEET EXIST.
 CURB & GUTTER