



Office of the Chicago City  
Clerk



O2011-7792

Office of the City Clerk

City Council Document Tracking Sheet

<b>Meeting Date:</b>	9/8/2011
<b>Sponsor(s):</b>	Reilly, Brendan (42)
<b>Type:</b>	Ordinance
<b>Title:</b>	Canopy(s) for Fordham Condominium, The
<b>Committee(s) Assignment:</b>	Committee on Transportation and Public Way

ORDINANCE  
THE FORDHAM CONDOMINIUM  
Acct. No. 300373 - 1  
Permit No. 1098022

*Be It Ordained by the City Council of the City of Chicago:*

SECTION 1. Permission and authority are hereby given and granted to THE FORDHAM CONDOMINIUM, upon the terms and subject to the conditions of this ordinance to maintain and use, as now constructed, one (1) Canopy(s) projecting over the public right-of-way adjacent to its premises known as 25 E. Superior St..

Said Canopy(s) at E. SUPERIOR ST. measure(s):

One (1) at thirty-one (31) feet in length, and one point five (1.5) foot in width for a total of forty-six point five (46.5) square feet.

The location of said privilege shall be as shown on prints kept on file with the Department of Business Affairs and Consumer Protection and the Office of the City Clerk.

Said privilege shall be constructed in accordance with plans and specifications approved by the Zoning Department - Signs.

This grant of privilege in the public way shall be subject to the provisions of Section 10-28-015 and all other required provisions of the Municipal Code of Chicago.

The grantee shall pay to the City of Chicago as compensation for the privilege #1098022 herein granted the sum of fifty-six (\$56.00) per annum in advance.

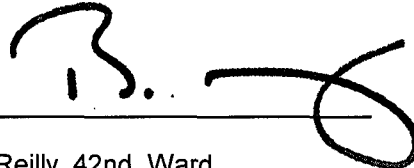
A 25% penalty will be added for payments received after due date.

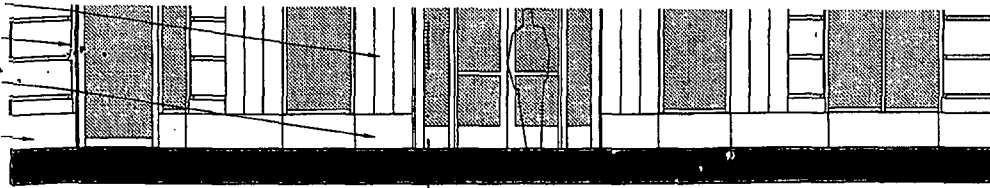
The permit holder agrees to hold the City of Chicago harmless for any damage, relocation or replacement costs associated with damage, relocation or removal of private property caused by the City performing work in the public way.

Authority herein given and granted for a period of five (5) years from and after 07/19/2008.

Alderman \_\_\_\_\_

Brendan Reilly 42nd Ward





FIRST FLOOR  
EL. 0'-0"

2

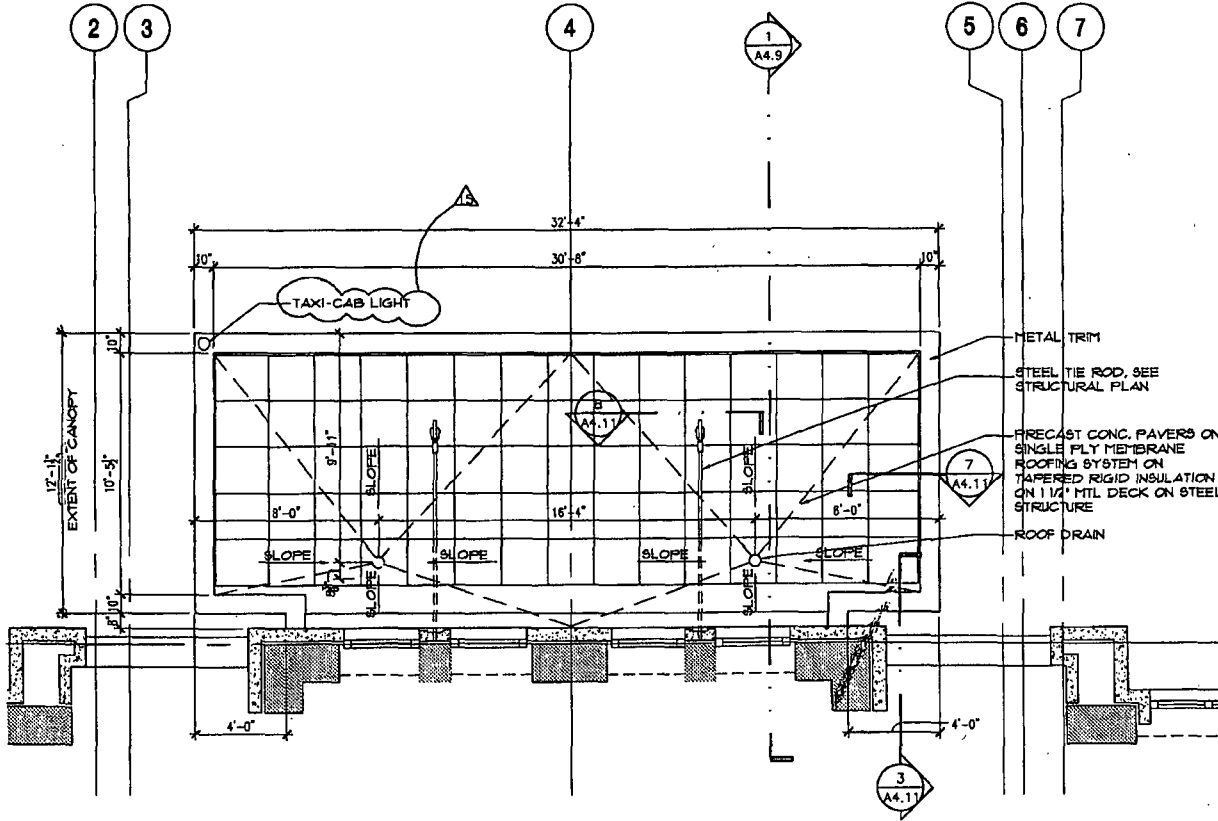
## NORTH CANOPY ELEVATION

SCALE: 1/4" = 1'-0"

3

## EAST C

SCALE: 1/4" = 1'-0"



FACE OF CONC.

LINE DENOTES CONC. PRECAS

LINE DENOTES CONC. PRECAS

SEALED JOINT PANEL AND ES

GALV. MTL. ESC SHIM PLATE AS

1/8" BASE BR TO GALV. STL. SMOOTH WELD

GALV. STL. CC EMBEDDED IN STRUCT. PAINTED ENTIRE ASSEMBLY

CL. OF CONNE

CL. OF ESCUT.

1/8" BASE BR TO GALV. STL. WELDED AFTER ERECTION

GALV. STL. FA TO MATCH EN

MTL. CLEVIS PAINTED TO MATCH ENTIRE ASSEMBLY

GALV. PTD. S (TYP.) PAINTED ENTIRE ASSEMBLY

5

## CANOPY PLAN

SCALE: 1/4" = 1'-0"

