



# City of Chicago



O2013-6192

Office of the City Clerk

## Document Tracking Sheet

<b>Meeting Date:</b>	9/11/2013
<b>Sponsor(s):</b>	Burns, William D. (4)
<b>Type:</b>	Ordinance
<b>Title:</b>	Issuance of permits for sign(s)/signboard(s) at 3445 S Martin Luther King Dr - 170 sq. ft.
<b>Committee(s) Assignment:</b>	Committee on Zoning, Landmarks and Building Standards

**ORDINANCE**

Be it ordained by the City Council of the City of Chicago:

Section 1. That the Commissioner of Buildings is hereby authorized and directed to issue a sign permit to Midwest Sign & Lighting, Inc., 4910 W. Wilshire Blvd, Country Club Hills, IL 60478 for the erection of a sign/signboard over 24 feet in height and/or over 100 square feet (in area of one face) at 3445 S. Martin Luther King Dr., Chicago, IL 60616 (South Elevation) with the dimensions, height and square foot area:

Dimensions: length: 32' - 4 1/2" Height: 5'3"

Height above grade/roof to the top of the sign: 25'

Total Square Foot Area 170 sq feet

Such signs (s) shall comply with all applicable provisions of Chapter 194A of the Chicago Zoning Ordinance and all other applicable provisions of the Municipal Code of the City of Chicago governing the construction and maintenance of outdoor signs, signboards and structures.

Section 2. This ordinance shall be in force and effect from and after its passage and due publication.



William D. Burns  
Alderman, 4<sup>th</sup> Ward  
City of Chicago



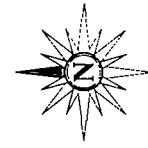
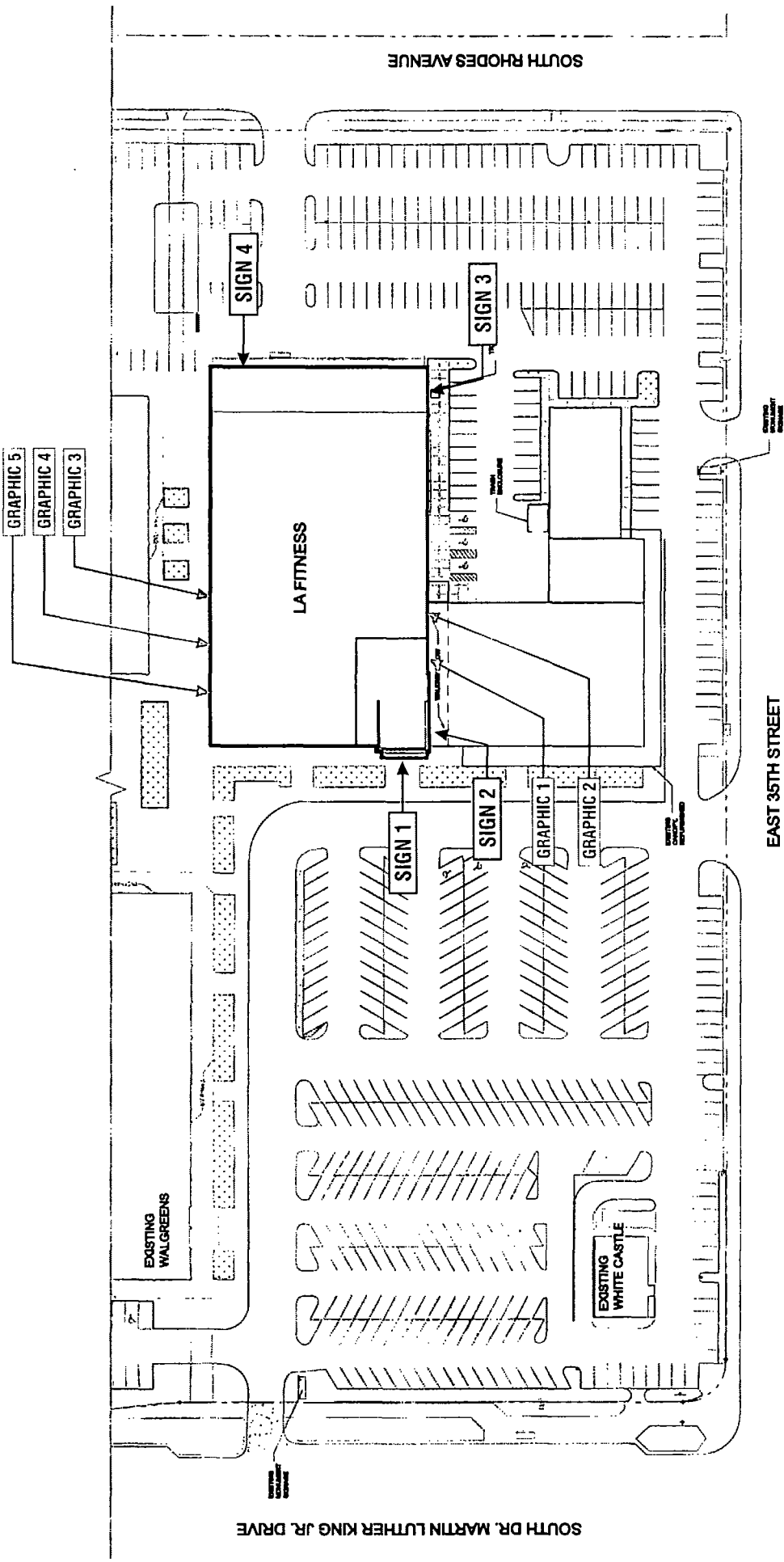
# LA|FITNESS

**Location: #1138**

**South Martin Luther King Drive  
Chicago, IL**

*The Icon Companies®*





DRAWINGS PREPARED BY:

Rev #	Req #	Date	Reg. By	Drawn By	Revision Description
Rev 1	154653	08/08/13	DR	KWK	Added bkqd. panel to sign 4
Rev 2	000000	00/00/00	XX	XX	
Rev 3	000000	00/00/00	XX	XX	
Rev 4	000000	00/00/00	XX	XX	
Rev 5	000000	00/00/00	XX	XX	
Rev 6	000000	00/00/00	XX	XX	

FILE PATH: Active\ACCOUNTS\LA FITNESS\Locations\3101 1138 Chicago IL

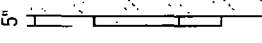
**SITE PLAN**

Location: South Martin Luther King Drive  
Chicago, IL

Proj #: 3101 | Loc #: 1138 | Date: 08/07/13

Req #: 154171 | Drawn By: KWK | Page #: 2

32'-4 1/2" **LA | FITNESS**



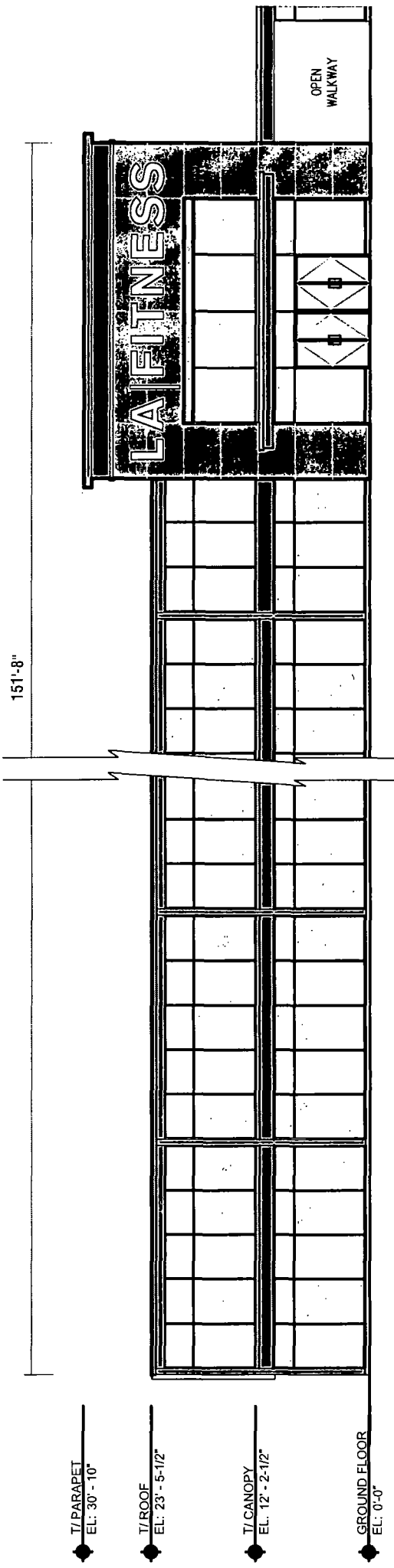
NON-ILLUMINATED

42" WHITE LED ILLUMINATED LETTERS - SELF CONTAINED (113 Sq. Ft.)

GRAY RETURNS, METAL RETAINERS - PAINTED GRAY

SIDE VIEW


SCALE: 1/8" = 1'-0"



WEST ELEVATION

SCALE: 1/16" = 1'-0"

NOTE: WALL SECTION DETAILS TO BE VERIFIED






**SIGN 1**

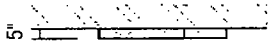
Location: South Martin Luther King Drive  
Chicago, IL

Proj #: 3101 Loc #: 1138 Date: 08/07/13

Req #: 154171 Drawn By: KWK Page #: 3

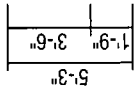
Rev #	Req #	Date	Req. By	Drawn By	Revision Description
Rev 1	154653	08/08/13	DR	KWK	Added bkqd. panel to sign 4
Rev 2	000000	00/00/00	XX	XX	
Rev 3	000000	00/00/00	XX	XX	
Rev 4	000000	00/00/00	XX	XX	
Rev 5	000000	00/00/00	XX	XX	
Rev 6	000000	00/00/00	XX	XX	

DRAWINGS PREPARED BY: **The Icon Companies**  
    
 icon | ims | ess  
 The Icon Companies  
 Drawings are the exclusive property of Icon Identity Solutions Inc.  
 Any unauthorized use or duplication is not permitted.



32'-4 1/2"

LA FITNESS



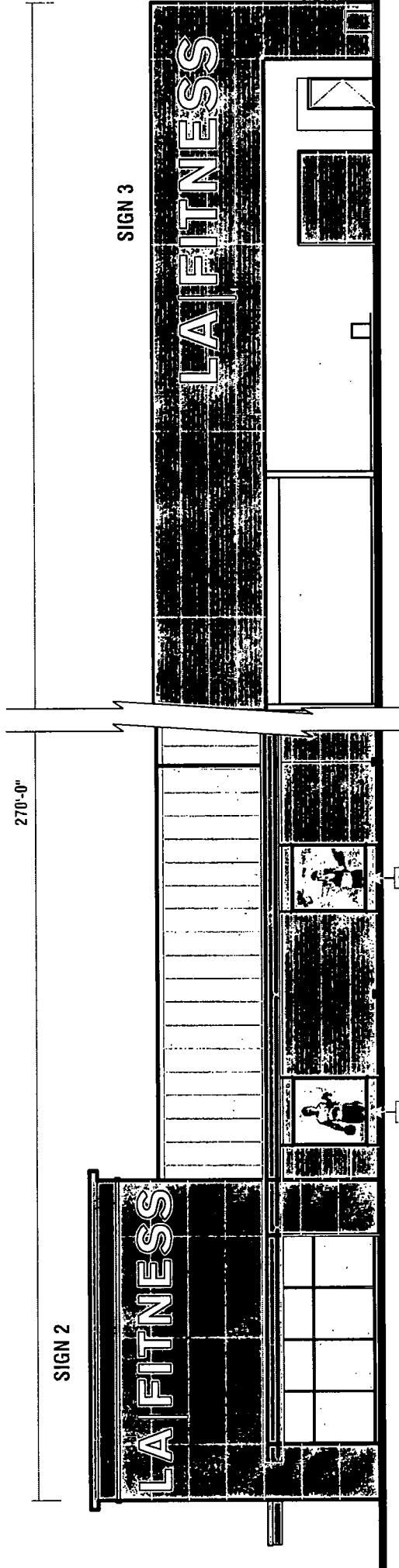
NON-ILLUMINATED

42" WHITE LED ILLUMINATED LETTERS - SELF CONTAINED (113 Sq. Ft.)

GRAY RETURNS, METAL RETAINERS - PAINTED GRAY

SIDE VIEW

SCALE: 1/8" = 1'-0"



SIGN 2

SIGN 3

ILLUMINATED GRAPHIC BOXES

96' X 88"

2

1

SOUTH ELEVATION

NOTE: WALL SECTION DETAILS TO BE VERIFIED

SCALE 1/16" = 1'-0"



SIGN 2

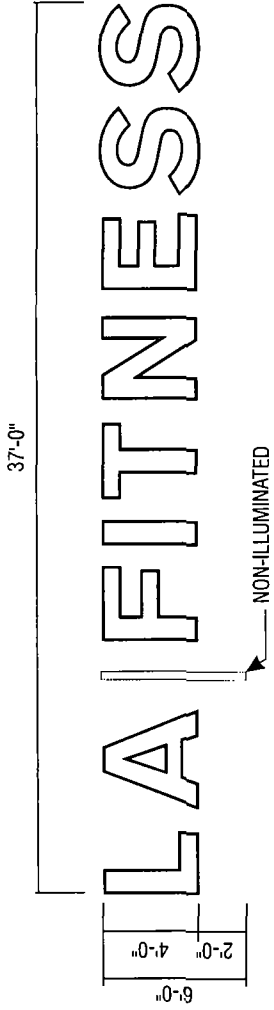
Location: South Martin Luther King Drive  
Chicago, IL

Proj #: 3101 Loc #: 1138 Date: 08/07/13  
Req #: 154171 Drawn By: KWK Page #: 4

Rev #	Req #	Date	Reg. By	Drawn By	Revision Description
Rev 1	154653	08/08/13	DR	RWK	Added bldg. panel to sign 4
Rev 2	000000	00/00/00	XXX	XXX	
Rev 3	000000	00/00/00	XXX	XXX	
Rev 4	000000	00/00/00	XXX	XXX	
Rev 5	000000	00/00/00	XXX	XXX	
Rev 6	000000	00/00/00	XXX	XXX	

DRAWINGS PREPARED BY:

The Icon Companies®  
 icon | ims | ess  
 icon Identity Solutions Inc.  
 Any unauthorized use or duplication is not permitted.

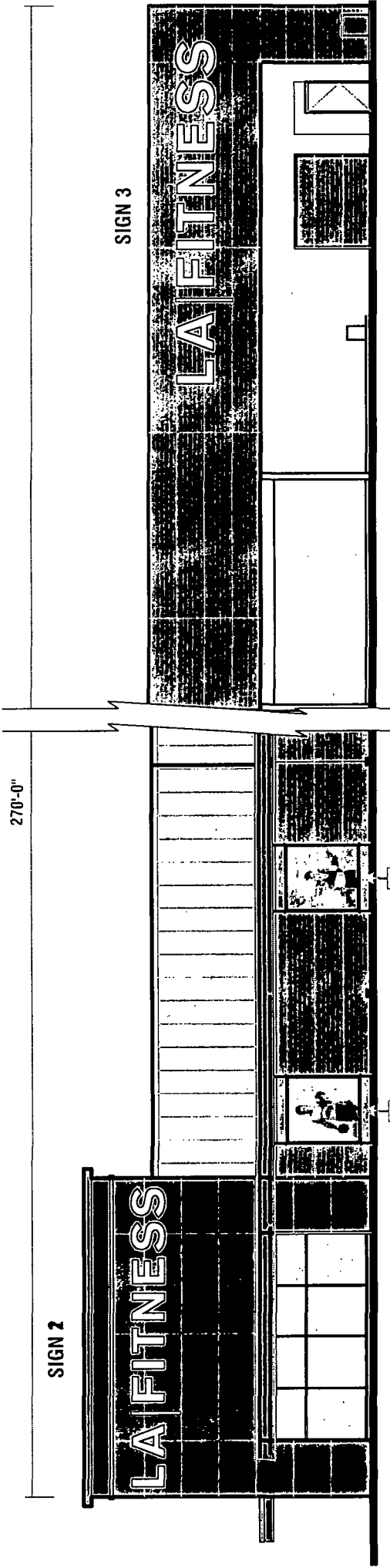


48" WHITE LED ILLUMINATED LETTERS - SELF CONTAINED (148 Sq. Ft.)

GRAY RETURNS, METAL RETAINERS - PAINTED GRAY

SIDE VIEW

SCALE: 1/8" = 1'-0"



SIGN 2

SIGN 3

ILLUMINATED GRAPHIC BOXES

SOUTH ELEVATION

SCALE: 1/16" = 1'-0"

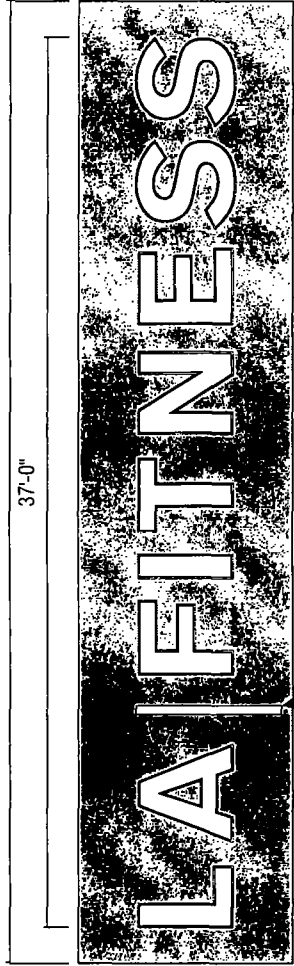
NOTE: WALL SECTION DETAILS TO BE VERIFIED

<b>LA FITNESS</b>		<b>SIGN 3</b>		Location: South Martin Luther King Drive Chicago, IL		Proj. #: 3101   Loc #: 1138   Date: 08/07/13		Req. #: 154171   Drawn By: KWK   Page #: 5		
DRAWINGS PREPARED BY:		Rev. #	Date	Req. By	Drawn By	Revision Description				
The Icon Companies®		Rev 1	154653 08/08/13	DR	KWK	XXX	XXX	Added bkgrd. panel to sign 4		
icon		Rev 2	000000 00/00/00	XXX	XXX	XXX	XXX			
ims		Rev 3	000000 00/00/00	XXX	XXX	XXX	XXX			
ess		Rev 4	000000 00/00/00	XXX	XXX	XXX	XXX			
LA FITNESS		Rev 5	000000 00/00/00	XXX	XXX	XXX	XXX			
LA FITNESS		Rev 6	000000 00/00/00	XXX	XXX	XXX	XXX			
FILE PATH: Active\ACCOUNTS\LA\FITNESS\Locations\3101_1138_Chicago_IL										

Drawings are the exclusive property of Icon Identity Solutions Inc. Any unauthorized use or duplication is not permitted.

40'-0"

37'-0"



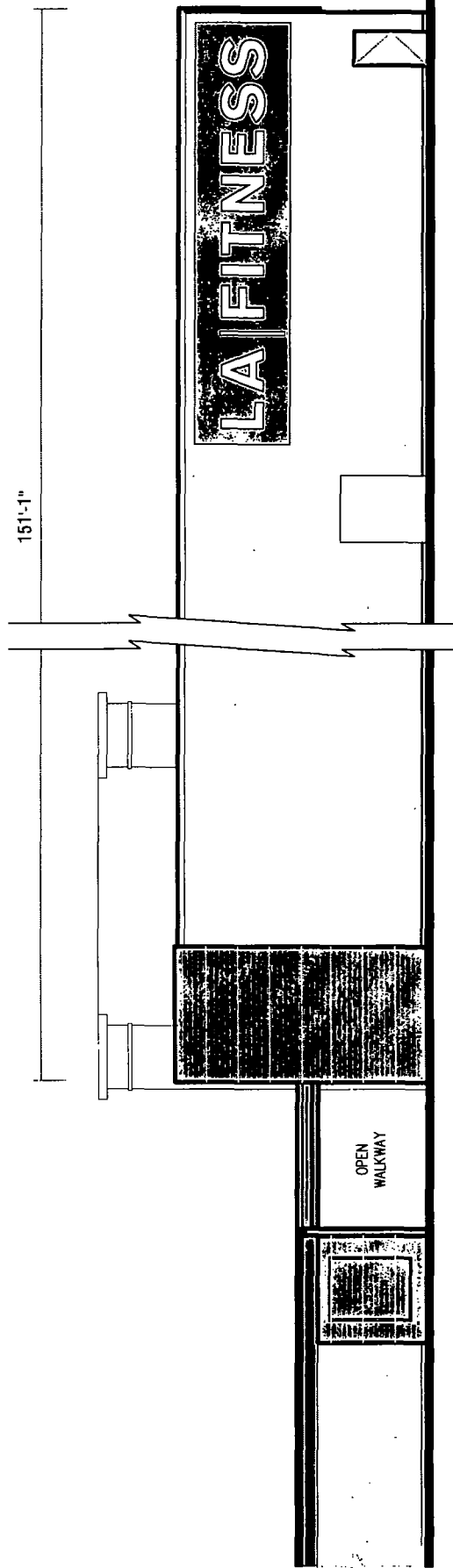
NON-ILLUMINATED

48" WHITE LED ILLUMINATED LETTERS W/ BACKGROUND PANEL - SELF CONTAINED (148 Sq. Ft.)

GRAY RETURNS, METAL RETAINERS - PAINTED GRAY

SIDE VIEW

SCALE: 1/8" = 1'-0"



T/ PARAPET  
EL: 30' - 10"

T/ ROOF  
EL: 23' - 5-1/2"

T/ CANOPY  
EL: 12' - 2-1/2"

GROUND FLOOR  
EL: 0'-0"

EAST ELEVATION

SCALE: 1/16" = 1'-0"

NOTE: WALL SECTION DETAILS TO BE VERIFIED

**SIGN 4**

Location: South Martin Luther King Drive  
Chicago, IL

Proj #: 3101 Loc #: 1138 Date: 08/07/13

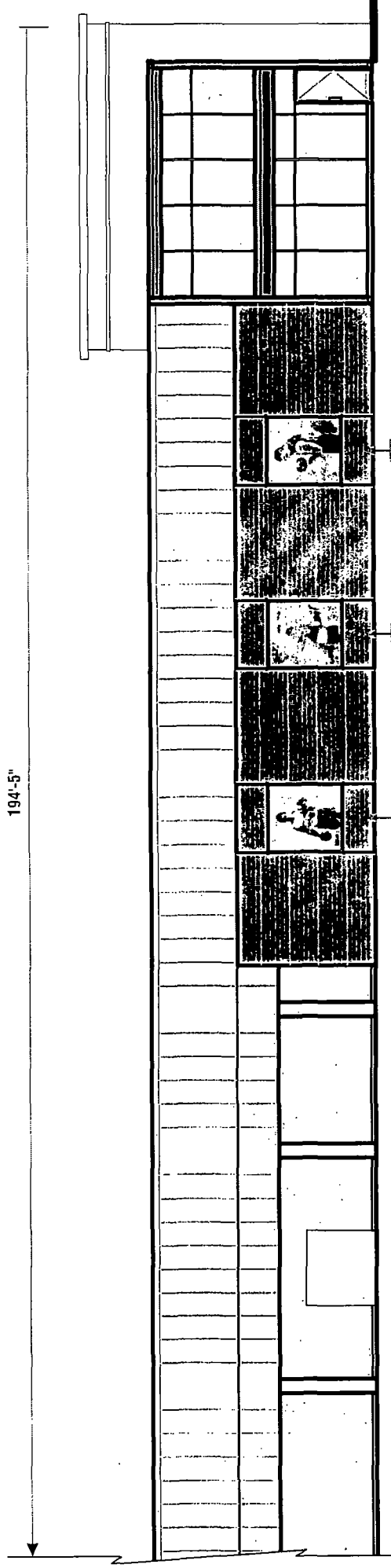
Req #: 154171 Drawn By: KWK Page #: 6

Rev #	Req #	Date	Req. By	Drawn By	Revision Description
Rev 1	154653	08/08/13	DR	KWK	Added bkqcd panel to sign 4
Rev 2	000000	00/00/00	XXX	XXX	
Rev 3	000000	00/00/00	XXX	XXX	
Rev 4	000000	00/00/00	XXX	XXX	
Rev 5	000000	00/00/00	XXX	XXX	
Rev 6	000000	00/00/00	XXX	XXX	

DRAWINGS PREPARED BY: **The Icon Companies**  
  
 icon | ims | ess  
 The Icon Companies  
 icon | ims | ess  
 Drawings are the exclusive property of Icon Identity Solutions Inc. Any unauthorized use or duplication is not permitted.



194'-5"



ILLUMINATED GRAPHIC BOXES

96" X 88"

3 4 5

NORTH ELEVATION

NOTE: WALL SECTION DETAILS TO BE VERIFIED

SCALE: 1/16" = 1'-0"

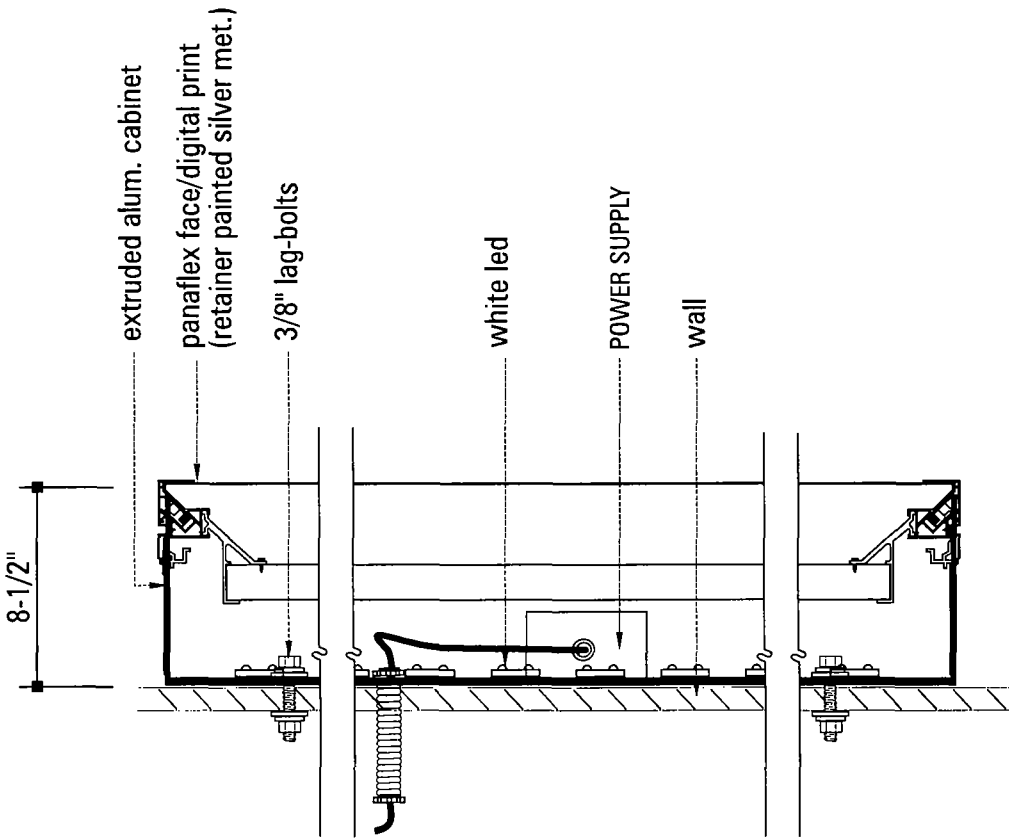
Location: South Martin Luther King Drive  
Chicago, IL  
Proj #: 3101 Loc #: 1138 Date: 08/07/13  
Req #: 154171 Drawn By: KWK Page #: 7

Rev #	Req #	Date	Reg. By	Drawn By	Revision Description
Rev 1	154653	08/08/13	DR	KWK	Added bkgd. panel to sup. 4
Rev 2	000000	00/00/00	XXX	XXX	
Rev 3	000000	00/00/00	XXX	XXX	
Rev 4	000000	00/00/00	XXX	XXX	
Rev 5	000000	00/00/00	XXX	XXX	
Rev 6	000000	00/00/00	XXX	XXX	

FILE PATH: Active\ACCO\UNITS\LA FITNESS\Locations\3101\_1138\_Chicago\_IL

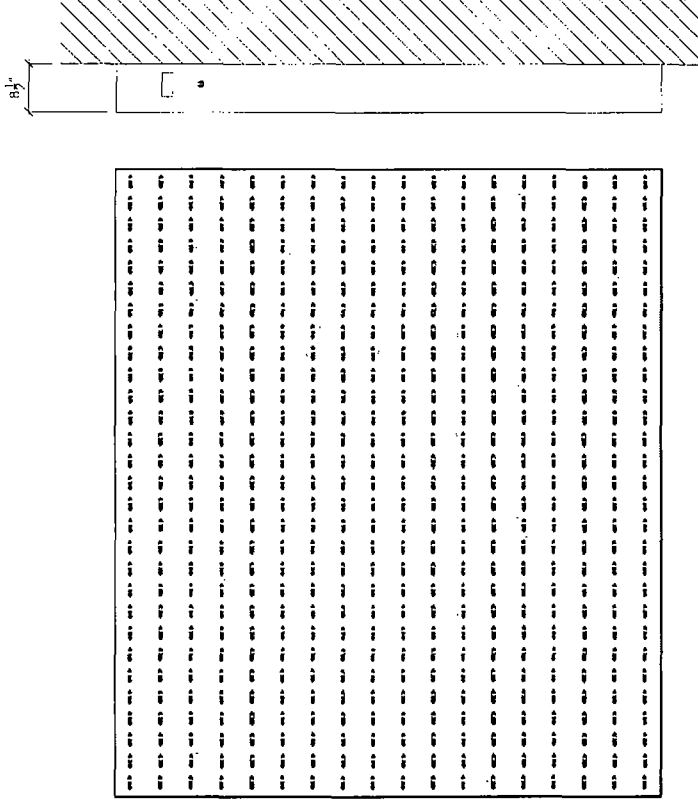
DRAWINGS PREPARED BY:

The Iron Companies<sup>®</sup>  
  
 icon im ess  
 Drawings are the exclusive property of Icon Identity Solutions Inc.  
 Any unauthorized use or duplication is not permitted.



PANAFLEX SIGNBOX DETAIL

N.T.S.



NOTE:  
 FACES TO BE PROVIDED BY OTHERS  
 AND SHIP TO ICON TO INSTALL IN BOX

TYPICAL CONSTRUCTION

TYPICAL ILLUM. GRAPHIC BOX DETAIL

Location: South Martin Luther King Drive  
 Chicago, IL

Proj #: 3101 Loc #: 1138 Date: 08/07/13  
 Req #: 154171 Drawn By: KWK Page #: 8

Rev #	Req #	Date	Req. By	Drawn By	Revision Description
Rev 1	154653	08/08/13	DR	KWK	Added bkgd. panel to sign 4
Rev 2	000000	00/00/00	XXX	XXX	
Rev 3	000000	00/00/00	XXX	XXX	
Rev 4	000000	00/00/00	XXX	XXX	
Rev 5	000000	00/00/00	XXX	XXX	
Rev 6	000000	00/00/00	XXX	XXX	

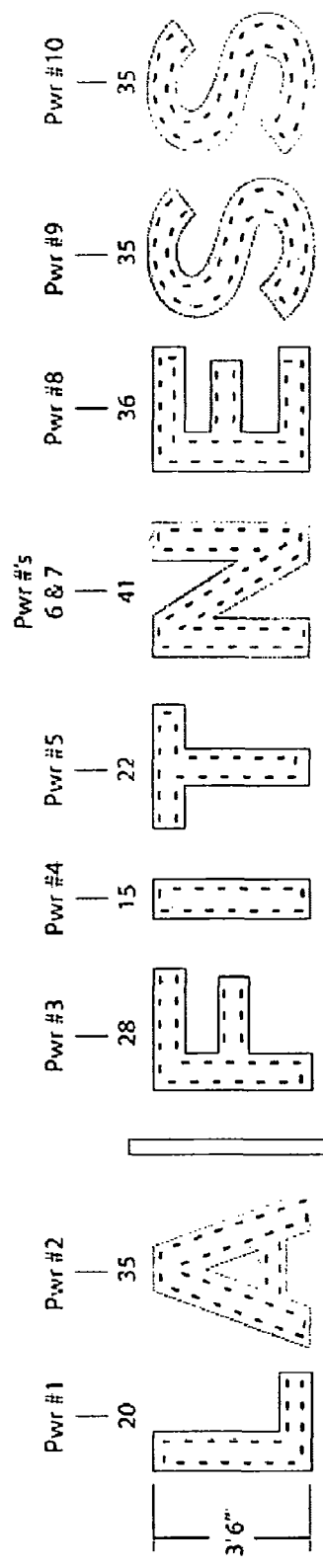
FILE PATH: Active\ACCOUNTS\LA FITNESS\Locations\3101\_1138\_Chicago\_IL

DRAWINGS PREPARED BY:

The Icon Companies®  
 icon | ims | ess  
 LA FITNESS  
 Drawings are the exclusive property of Icon Identity Solutions Inc.  
 Any unauthorized use or duplication is not permitted.

**LA FITNESS**

1) Unless specified all quotes and layouts are for a single face sign or a single set of letters.  
 2) Quotes are based off the quality of artwork and amount of detailed information provided by the customer pertaining to font, letter height, can depth, face material, and any special instructions provided by the customer. Missing information may cause delays in the delivery of estimates, as well as affect product selection, quantities, application, and illumination.  
 3) LED module placement is an approximation. AgLight recommends the sign manufacturer verify the LED placement and quantity to ensure even illumination.  
 4) Final material estimates are the responsibility of the sign manufacturer to ensure the customer's expectations are met.  
 5) Unless otherwise stated on this drawing, all face 1 1/2 signs are assumed to be 5 inches deep and fully illuminated signs are assumed to be a minimum of 2 inches deep.  
 6) For detailed information on installation of Ag Light LED modules and systems please refer to "Installation Guides" and "Product Specification Sheets" at [www.AgLight.com](http://www.AgLight.com) under the downloads section or contact a customer service representative toll free at 866.633.0203.



MH

134-foot White SignRayz™ Apex G2 7500K (LS-APEX-ASW-G2) - 267 Modules  
 10 - 60W Power Supplies

**AGILIGHT**  
Light It Up

1718 Arlon Parkway Ste 108, San Antonio, TX 78216  
 PH: (856) 482-0203 - Fax: (210) 360-1454  
[www.AgLight.com](http://www.AgLight.com)

42" LA|Fitness  
 December 7, 2011

REVIEWS PREPARED BY:

Rev #	Rev #	Date	Reg By	Drawn By	Revision Description
Rev 1	154653	08/08/13	DR	KWK	Added bkgrd. panel to sign 4
Rev 2	000000	00/00/00	XXX	XXX	
Rev 3	000000	00/00/00	XXX	XXX	
Rev 4	000000	00/00/00	XXX	XXX	
Rev 5	000000	00/00/00	XXX	XXX	
Rev 6	000000	00/00/00	XXX	XXX	

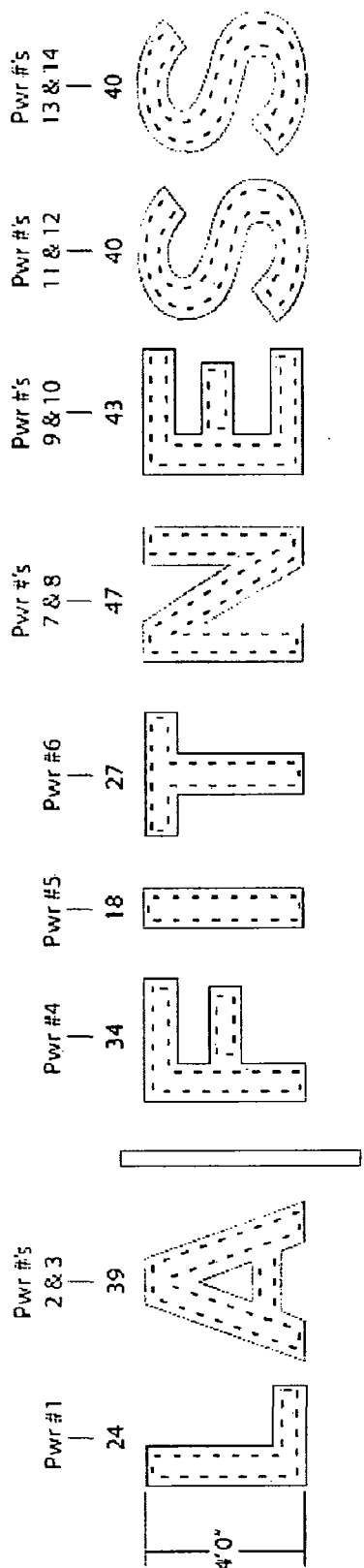
FILE PATH: ActiveACCOUNTS\LA FITNESS\Locations\3101 - 1138 Chicago IL

**42" LETTER LED LAYOUT**

Location: South Martin Luther King Drive  
Chicago, IL

Proj #: 3101 Loc #: 1138 Date: 08/07/13  
 Req #: 154171 Drawn By: KWK Page #: 9

1) Unless specified all quotes and layouts are for a single face sign on a single set of letters.  
 2) Quotes are based off the quality of art work and amount of detailed information provided by the customer pertaining to font, letter height, can depth, face material and any special instructions provided by the customer.  
 Missing information may cause delays in the delivery of estimates, as well as effect product selection, quantities, application and illumination.  
 3) LED module placement is an approximation. AgiLight recommends the sign manufacturer verify the LED placement and quantity to ensure even illumination.  
 4) Final material estimates are the responsibility of the sign manufacturer to ensure the customers expectations are met.  
 5) Unless otherwise stated on this drawing, all face lit signs are assumed to be 5 inches deep and halo illuminated signs are assumed to be a minimum of 2 inches deep.  
 6) For detailed information on installation of AgiLight LED modules and systems please refer to "Installation Guides" and "Product Specification Sheets" at [www.AgiLight.com](http://www.AgiLight.com) under the downloads section or contact a customer service representative toll free at 866.482.0203.



MH

156 feet White SignRayz™ Apex G2 7500K (LS-APEX-ASW-G2) - 312 Modules  
 14 - 60W Power Supplies

**AGILIGHT**  
Light It Up

48" LA|Fitness

November 29, 2011

1219 Arion Parkway Ste 108, San Antonio, TX 78216  
 PH: (866) 482-0203 - Fax: (210) 360-1454  
[www.AgiLight.com](http://www.AgiLight.com)

DRAWINGS PREPARED BY:

Rev #	Req #	Date	Req. By	Drawn By	Revision Description
Rev 1	154653	08/07/13	DR	KWK	Added bkqd, panel to sign 4
Rev 2	000000	00/00/00	XX	XX	
Rev 3	000000	00/00/00	XX	XX	
Rev 4	000000	00/00/00	XX	XX	
Rev 5	000000	00/00/00	XX	XX	
Rev 6	000000	00/00/00	XX	XX	

Location: South Martin Luther King Drive  
Chicago, IL

Proj #: 3101 Loc #: 1138 Date: 08/07/13

Req #: 154171 Drawn By: KWK Page #: 10

FILE PATH: Active\ACCOUNTS\LA|FITNESS\Locations\3101-1138 Chicago IL

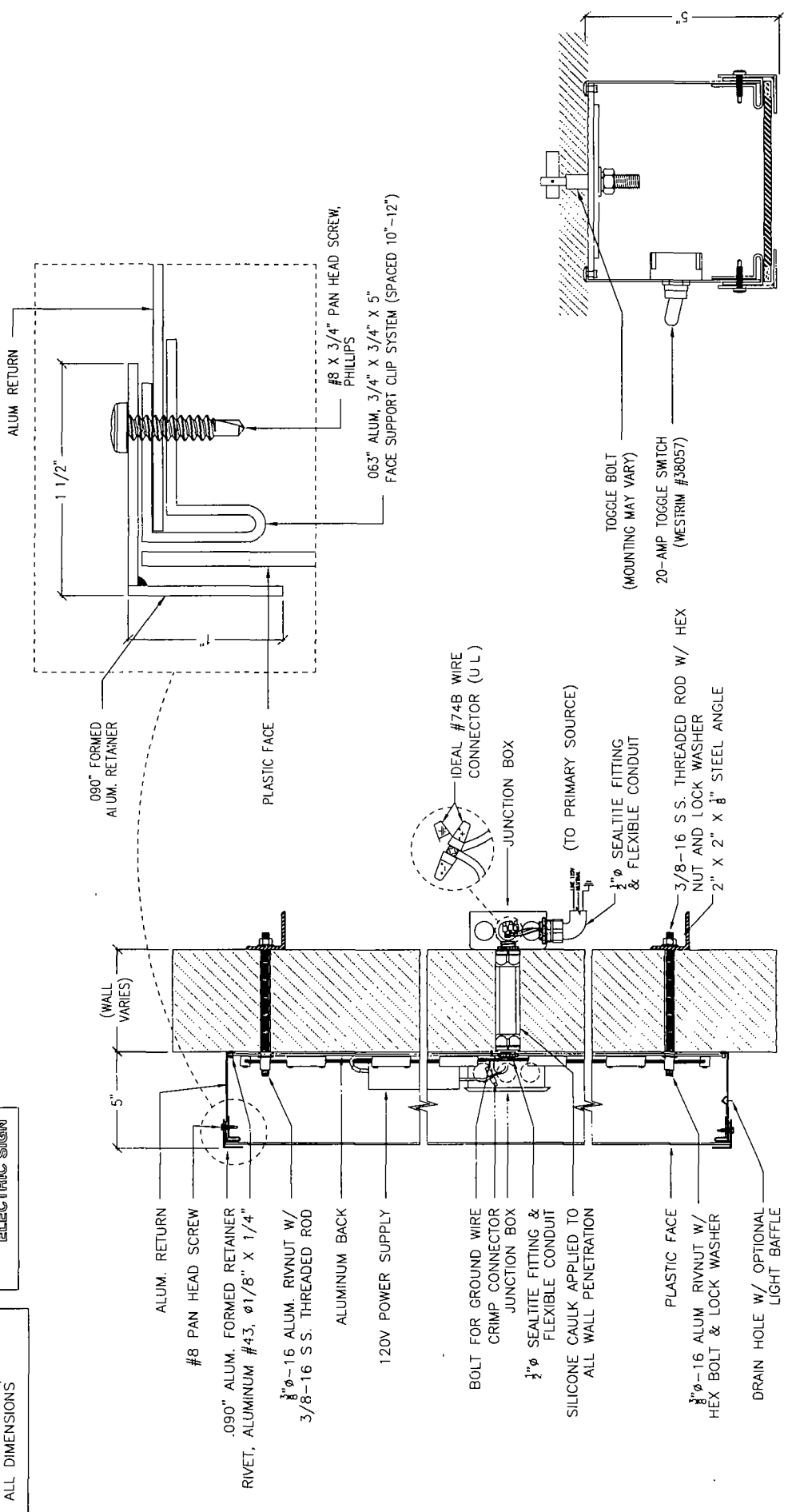
THIS SIGN TO BEAR THIS MARK



**Underwriters Laboratories Inc.**  
ELECTRIC SIGN

USE WHITE SILICONE TO CONCEAL LIGHT LEAKS

TOLERANCE: ± 1/16" ON ALL DIMENSIONS



**SECTION: SELF-CONTAINED w/ RETAINER**

(A)

SCALE 1-1/2"=1'-0"

**SECTION: SWITCH**

(B)

SCALE 3"=1'-0"

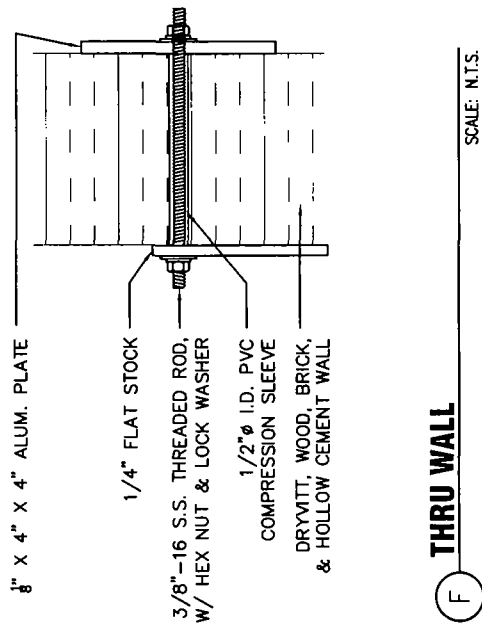
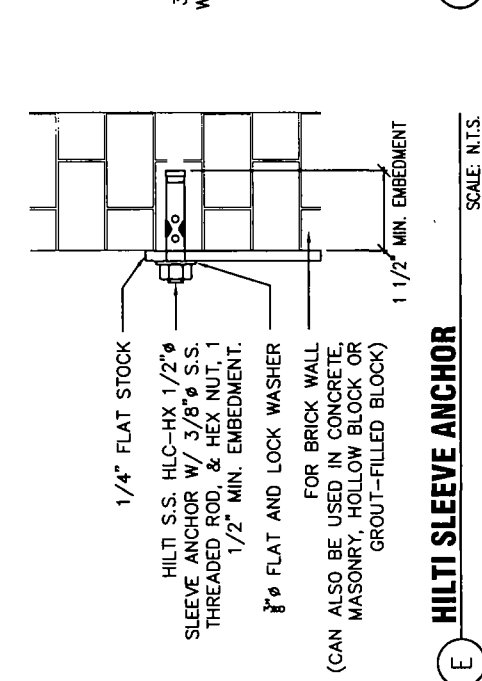
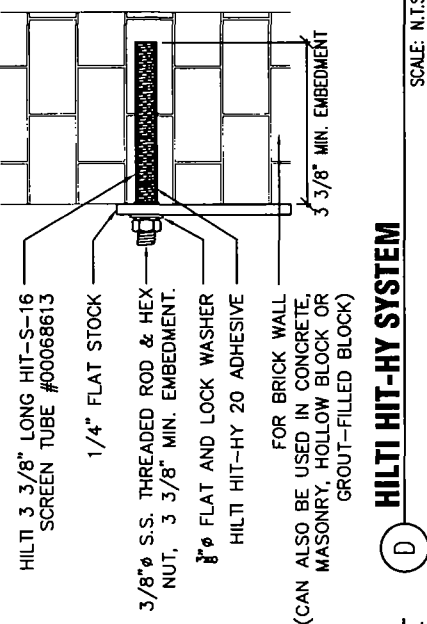
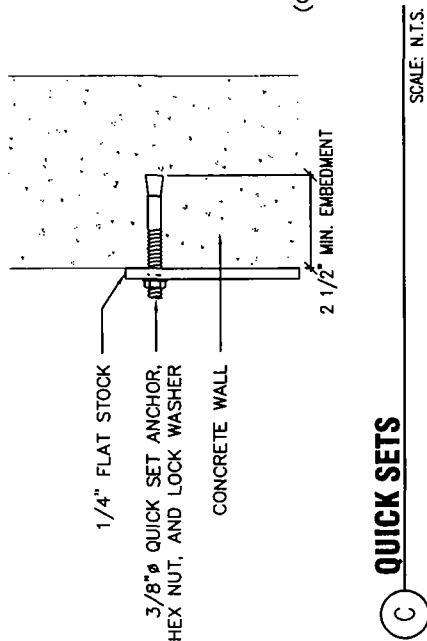
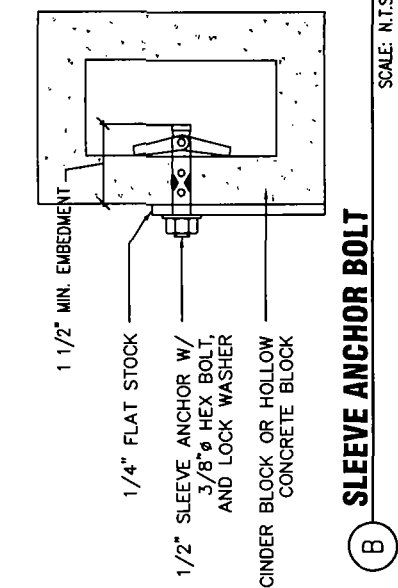
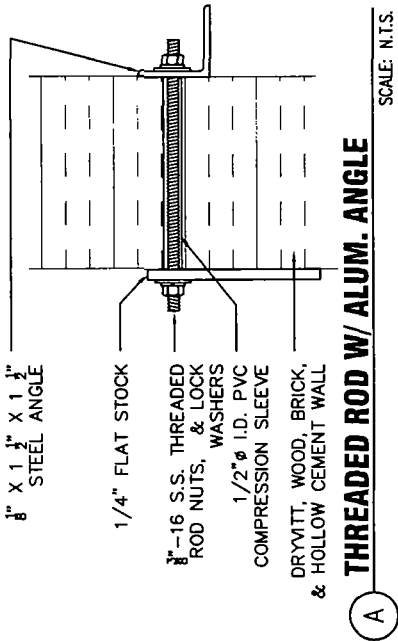
**LETTER SECTION DETAIL**

Location: South Martin Luther King Drive  
Chicago, IL

Proj #: 3101 Loc #: 1138 Date: 08/07/13  
Req #: 154171 Drawn By: KWK Page #: 11

Rev #	Req #	Date	Req. By	Drawn By	Revision Description
Rev 1	154653	08/08/13	DR	KWK	Added bkqd. panel to sign 4
Rev 2	000000	00/00/00	XXX	XXX	
Rev 3	000000	00/00/00	XXX	XXX	
Rev 4	000000	00/00/00	XXX	XXX	
Rev 5	000000	00/00/00	XXX	XXX	
Rev 6	000000	00/00/00	XXX	XXX	

FILE PATH: Active\ACCOUNTS\LA FITNESS\Locations\3101-1138 Chicago, IL



Rev #	Rev #	Date	Rev. By	Drawn By	Revision Description
Rev 1	154653	08/08/13	DR	KWK	Added block_panel to sign 4
Rev 2	000000	00/00/00	XXX	XXX	
Rev 3	000000	00/00/00	XXX	XXX	
Rev 4	000000	00/00/00	XXX	XXX	
Rev 5	000000	00/00/00	XXX	XXX	
Rev 6	000000	00/00/00	XXX	XXX	

Location: South Martin Luther King Drive Chicago, IL  
 Proj #: 3101 Loc #: 1138 Date: 08/07/13  
 Req #: 154171 Drawn By: KWK Page #: 12  
 FILE PATH: Active\ACCOUNTS\LA FITNESS\Locations\101-1138 Chicago IL

**LA | FITNESS**

**LETTER MOUNTING OPTIONS**

The Icon Companies  
 icon imss ess  
 icon imss ess  
 icon imss ess  
 icon imss ess

Drawings are the exclusive property of Icon Identity Solutions Inc. Any unauthorized use or duplication is not permitted.