



City of Chicago



Or2013-225

Office of the City Clerk

Document Tracking Sheet

Meeting Date:	5/8/2013
Sponsor(s):	Tunney, Thomas (44)
Type:	Order
Title:	Issuance of permits for sign(s)/signboard(s) at 3530 N Clark St
Committee(s) Assignment:	Committee on Zoning, Landmarks and Building Standards

COMMITTEE ON ZONING, LANDMARKS & BUILDING STANDARDS

(signs)

ORDERED, That the Commissioner of Buildings is hereby directed to issue a sign permit to:

**Parvin-Clauss Sign Company
165 Tubeway Drive
Carol Stream, IL 60188**

For the erection of a sign/signboard over 24 feet in height and/or 100 square feet (in area of one face) at:

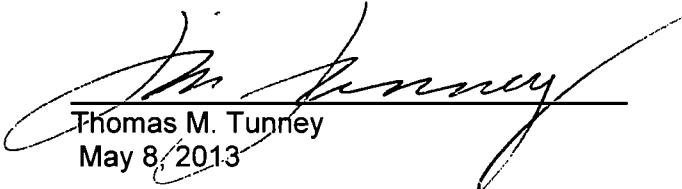
**Flaco's Tacos
3530 N. Clark Street
Chicago, IL 60657**

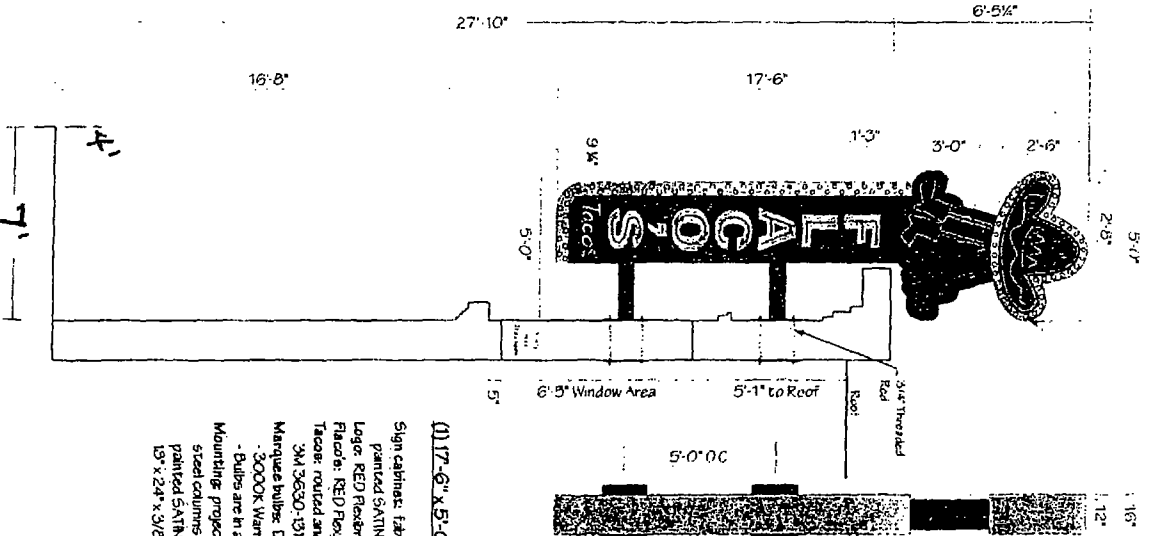
Dimensions: Length: 5 feet - 0 inches Height: 17 feet - 6 inches

Height above grade/roof to top of sign: 34 feet - 3 inches

TOTAL SQUARE FOOT AREA: 87.5 square feet

Such sign(s) shall comply with all applicable provisions of TITLE 17 of the Chicago Zoning Ordinance and all other applicable provisions of the Municipal Code of the CITY OF CHICAGO governing the construction and maintenance of outdoor sign, signboards and structures.


Thomas M. Tunney
May 8, 2013



(1) 17'-6" x 5'-0" x 16" deep double face LED illuminated sign

Sign cabinet: fabricated aluminum, painted SATIN BLACK w/ METALLIC GOLD channel

Layer: RED Resinrite LED flashers

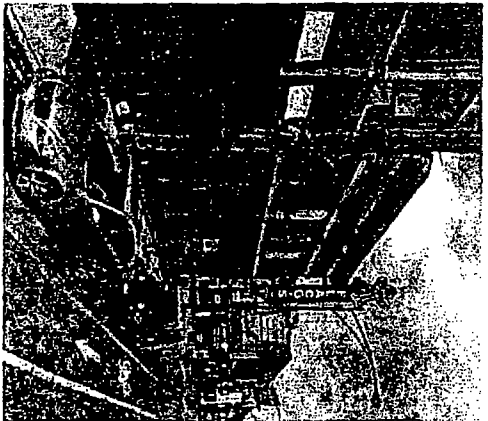
Face: RED Resinrite LEDs on METALLIC GOLD letters

Trace: routed and backed with WHITE acrylic w/ 3M 3630-131 METALLIC GOLD translucent vinyl applied

Manquee bulbs: Decora LED S41L/E26 Medium-Base Globe Bulbs

• 3000K Warm White Frosted Lens

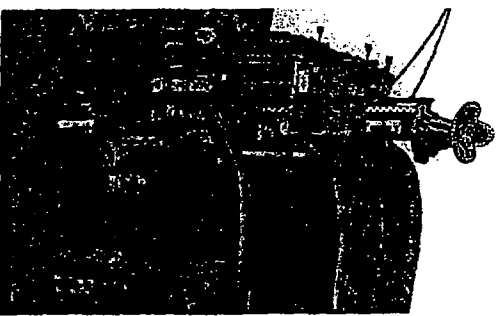
Mounting: projection mount, 6" x 6" square steel corners w/ 1/8" x 2 1/2" x 1/2" thick steel mounting plates, painted SATIN BLACK, thru-hole with 3/4" threaded rod & 1/2" x 2 1/2" x 3/8" thick steel washer plates



Looking North



Looking South



© Copyright 2012 by Parvin-Claus Sign Co

This Document is owned by, and the information contained in it is proprietary to, Parvin-Claus Sign Company. By receipt hereof the holder agrees not to use the information, disclose it to any third party, nor reproduce this document without the prior written consent of Parvin-Claus Sign Company. Holder also agrees to immediately return this document upon request of Parvin-Claus Sign Company.

Parvin-Claus SIGN COMPANY
 Design • Fabrication • Installation • Maintenance
 1875 Broadway • Chicago, IL 60612 • (773) 442-1333
 (773) 442-3100 • (773) 442-3100 • (773) 442-3100
 • Fax: (773) 442-3100 • Email: info@parvinclaus.com
 WWW.PARVINCCLAUS.COM

PROJECT:
 Flaco's Tacos
 3550 N. Clark St.
 CHICAGO

CUSTOMER APPROVAL:
 DATE

AUTHORIZED SIGNATURE

REPRESENTATIVE:
 Brian Newton / KZ
 DRAWN BY:
 Bill Goodwyn

DATE: 7.9.12

SCALE: 1/4" = 1'

SHEET NO.: 1 of 1

WORK ORDER: #06798

FILE NAME: Flaco798

PRINT INFO

REVISIONS:

1	7/6/12
2	7/20/12
3	7/23/12
4	8/28/12 (bmn)
5	9/05/12 (bmn)
6	9/11/12 (bmn)
7	9/12/12 (bmn)
8	9/14/12 (bmn)
9	12/20/12 (bmn)
10	12/4/13 (bmn)

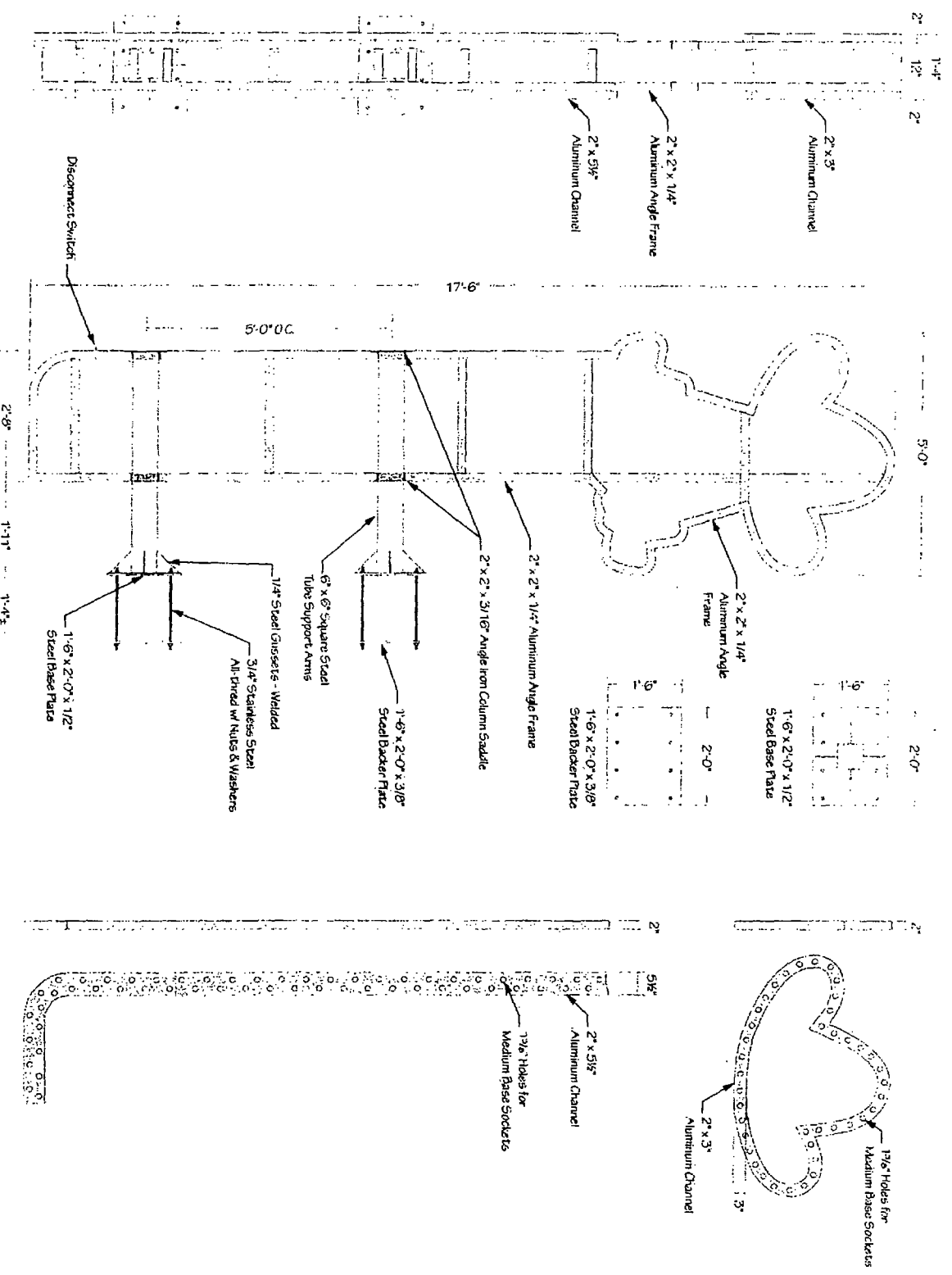




This Document is owned by, and the information contained in it is proprietary to, Parvin-Class Sign Company. By receipt hereof the holder agrees not to use the information, disclose it to any third party, nor reproduce this document without the prior written consent of Parvin-Class Sign Company. Holder also agrees to immediately return this document upon request of Parvin-Class Sign Company.

Copyright 2012 by Parvin-Class Sign Co.

Construction Details



PROJECT: Flaco's Tacos 3530 N. Clark St CHICAGO	
CUSTOMER APPROVAL: DATE: _____ AUTHORIZED SIGNATURE: _____	
REPRESENTATIVE: Ertan Newton / KZ DRAWN BY: Bill Marlow DATE: 1.24.13 SCALE: 1/2" = 1'	
SHEET NO.: Construction WORK ORDER #: 6079B FILE NAME: flac679b	
PRINT INFO	
REVISIONS:	
1	
2	
3	
4	
5	
6	
7	
8	
9	
10	

FLEXIBRITE

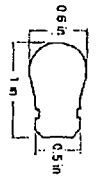
Flexible LED tubing



- Extremely flexible LED tubing
- Daytime color for red and neutral for other colors
- Optically modified silicone extrusion: UV stable, hydrocarbon insensitive, non-fading
- Convenient mounting clips and mounting tracks
- Can be cut in the field
- UL and cUL Recognized, CE Certified

Specifications:

Power per foot: 2.8 W
Operating temperature: -40° C to +70° C
Power supply: Shoal ED 12 VDC Power Supply
Packaging: 2 ft or 10 ft packaged with end caps and mounting clips



Mounting Track and Clip

Item Description	Part Number	Cut Increments
Red	701489-R-Size	2.0 in

Uses Shoal ED 12 VDC Power Supply

DecorLED S14L/E26 Medium Base Globe Bulbs

DEC-S14(E)-M-1204

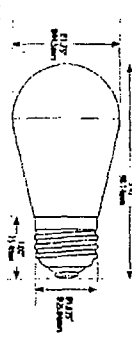
Direct replacement of incandescents up to 10 watts — Consumes only 1 watt — Up to 90% Energy Savings

FEATURES:

- Warranty: 3 Years
- Major Power Savings: Consumes Only 1 Watt. Compatible with 10W-12W Incandescents
- Sturdy Design: UV-Stabilized Acrylic Lens; UV-Stabilized Polycarbonate Shell; Heat-Flaked Brass Base
- Solid State: High Shock & High-Vibration Resistant
- Long Lifespan: White LED Lumen Maintenance Greater than 70% at 35,000 Hours of Operation (Based on average life based on engineering testing and probability analysis)
- Moisture Resistant: for Use Indoors or Outdoors
- Easy Installation: Bring Existing E26 Edison Screw-In Fixture



SPECIFICATIONS:



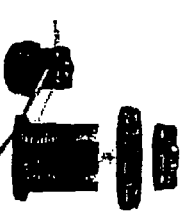
QUALITY

- Wide Ambient Oper. Temp. Range: -27° F to +127° F (-30° C to +50° C)
- Safety Assurance: ETL Listed
- Eco-Friendly: RoHS Compliant

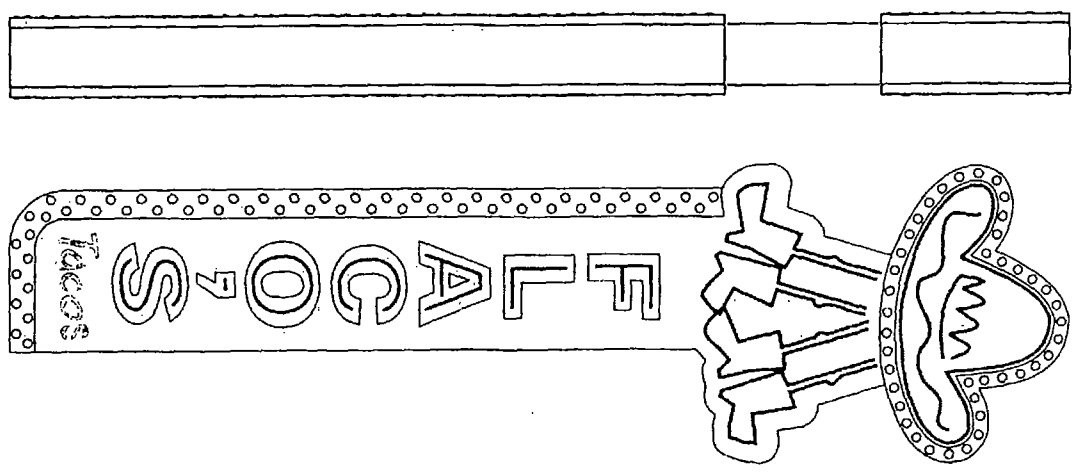
BENEFITS:

- Low Power Consumption / High Brightness
- Great Ambient Light Illumination to Greatly Lower Costs by Reducing Re-lamp Frequency
- Cool Operation: Doesn't Get Hot to the Touch — Minimizes Fire Hazard
- Eco-Friendly: No Mercury, No Lead Content
- No Hazardous Emissions: No UV or IR Radiation / No RF Interference
- Even Lighting: High Intensity / No Hotspots

Part No.	Part Description	Quantity	Unit Price	Total Price
DEC-S14(E)-M-1204	DecorLED S14L/E26 Medium Base Globe Bulb	1	\$1.20	\$1.20
DEC-S14(E)-M-1204	DecorLED S14L/E26 Medium Base Globe Bulb	10	\$1.20	\$12.00
DEC-S14(E)-M-1204	DecorLED S14L/E26 Medium Base Globe Bulb	50	\$1.20	\$60.00
DEC-S14(E)-M-1204	DecorLED S14L/E26 Medium Base Globe Bulb	100	\$1.20	\$120.00
DEC-S14(E)-M-1204	DecorLED S14L/E26 Medium Base Globe Bulb	500	\$1.20	\$600.00
DEC-S14(E)-M-1204	DecorLED S14L/E26 Medium Base Globe Bulb	1000	\$1.20	\$1200.00



Circle F Medium Base Socket with Screw Collar



Parvin-Class

SIGN COMPANY

1451 Taylor Drive, Chicago, IL 60618
 Tel: 414-510-7930 • Fax: 414-510-2074
 E-Mail: info@parvinsign.com
 www.parvinsign.com

PROJECT:

Flagco's Tacos
 3550 N. Clark St
 CHICAGO

CUSTOMER APPROVAL:

DATE: _____
 AUTHORIZED SIGNATURE: _____

REPRESENTATIVE:
 Brian Newton / K2

DRAWN BY:
 Bill Marlow

DATE:
 1.24.13

SCALE:
 1/2" = 1'

SHEET NO.:
 Construction #2

WORK ORDER:
 #66798

FILE NAME:
 Fla66798

PRINT INFO:

REVISIONS:

NO.	DESCRIPTION
1	
2	
3	
4	
5	
6	
7	
8	
9	
10	



This Document is owned by, and the information contained in it is proprietary to, Parvin-Class Sign Company. By receipt hereof, the holder agrees not to use the information, disclose it to any third party, nor reproduce this document without the prior written consent of Parvin-Class Sign Company. Holder also agrees to immediately return this document upon request of Parvin-Class Sign Company.

© Copyright 2012 by Parvin-Class Sign Co