

CITY COUNCIL
COMMITTEE ON ZONING, LANDMARKS AND BUILDING STANDARDS

COUNCIL ORDER

RE: Approval of sign over 100 square feet in area or over 24 feet above grade

ORDERED, that the City Council hereby approves the following sign application submitted by:

Applicant*: Lasik Plus

(* The Applicant is the owner of the real property or the business tenant of the real property. Do not list the sign contractor, sign erector, sign company or advertising entity in the above space.)

This Order approves the following sign in accordance with Municipal Code of Chicago Section 13-20-680:

Address of Sign: 405 N Wabash Ave Chicago, IL 60611

Zoning District: PD113

DOB Sign Permit Application #: 100877046

Sign Details:

1. On-premise OR Off-premise
2. Static sign OR Dynamic-image display sign
3. Number of sign faces 1
4. Projecting over the public way No (Yes or No) If yes, Public Way Use #: _____
5. Dimensions: Length 7 feet 4 inches Height 1 feet 0 inches
Total square feet in area: 7 feet _____ inches
6. Height above grade: 34 feet _____ inches
7. Elevation (side of building or lot where the sign will be erected): Southeast
8. Name of Sign Contractor/Erector: Parvin-Clauss Sign Co

To be legal, such sign shall comply with all provisions of Title 17 of the Chicago Municipal Code ("Zoning Ordinance") and all other provisions of the Municipal Code governing the permitting, construction and maintenance and removal of signs and sign structures. Failure of the applicant and the applicant's successors to comply shall be grounds for invalidation or revocation of the sign permit.



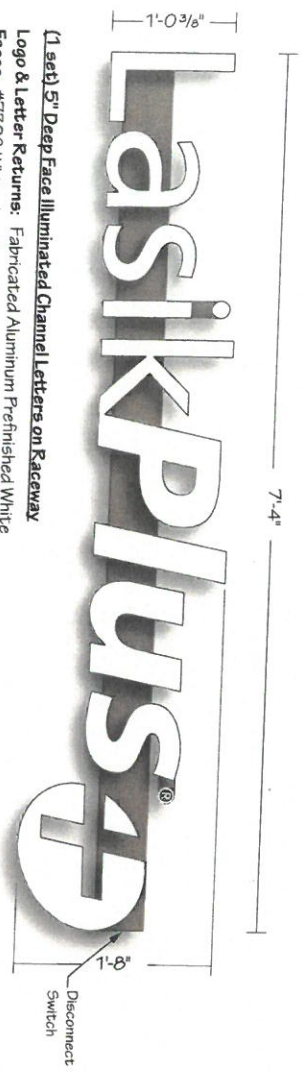
Alderman

42

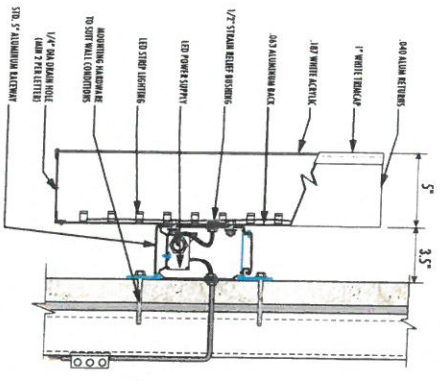
Ward



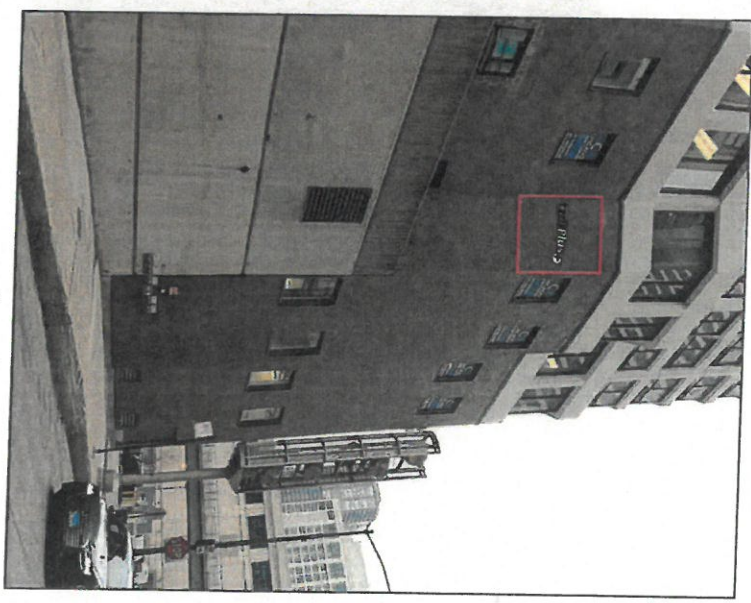
Rush & Kinzie



(1 set) 5" Deep Face Illuminated Channel Letters on Raceway
Logo & Letter Returns: Fabricated Aluminum Prefinished White
Faces: #7328 White Acrylic w/ White trincap
Raceways: Std Narrow 5" - Painted SW 2836 Quartersawn Oak
"@" Mark: White Vinyl on Flat Alum. - Painted SW 2836 Quartersawn Oak
Illumination: White LEDs w/ Remote Located 60 Watt Power Supplies
Power: Use Existing (1) 15Amp @ 120Volts Electrical Circuit Run to Site
Mounting: Raceways Flush to Building w/ Masonry Anchors



Existing



Proposed

This sign is built to UL Standards for operation in North America. This Document is owned by, and the information contained in it is proprietary to, Parvin-Clauss Sign Company. By receipt hereof the holder agrees not to use the information, disclose it to any third party, nor reproduce this document without the prior written consent of Parvin-Clauss Sign Company. Holder also agrees to immediately return this document upon request of Parvin-Clauss Sign Company. © Copyright 2020 by Parvin-Clauss Sign Co.

Parvin-Clauss
SIGN COMPANY

Design • Fabrication • Installation • Maintenance
 14510baw/Driver-Consult/Signs+Illum/00108
 Tel: 630-510-2020 • Fax: 630-510-2074
 e-mail: info@parvinclauss.com
 www.parvinclauss.com

PROJECT:

Lasik Plus
 405 N. Wabash Avenue
 Suite P-2E
 Chicago, IL

CUSTOMER APPROVAL:

DATE:

AUTHORIZED SIGNATURE:

REPRESENTATIVE:

Drawn by: Lisa Staszak / LS

DATE: 4.20.20

SCALE: 1" = 1'

SHEET NO. 2 of 2

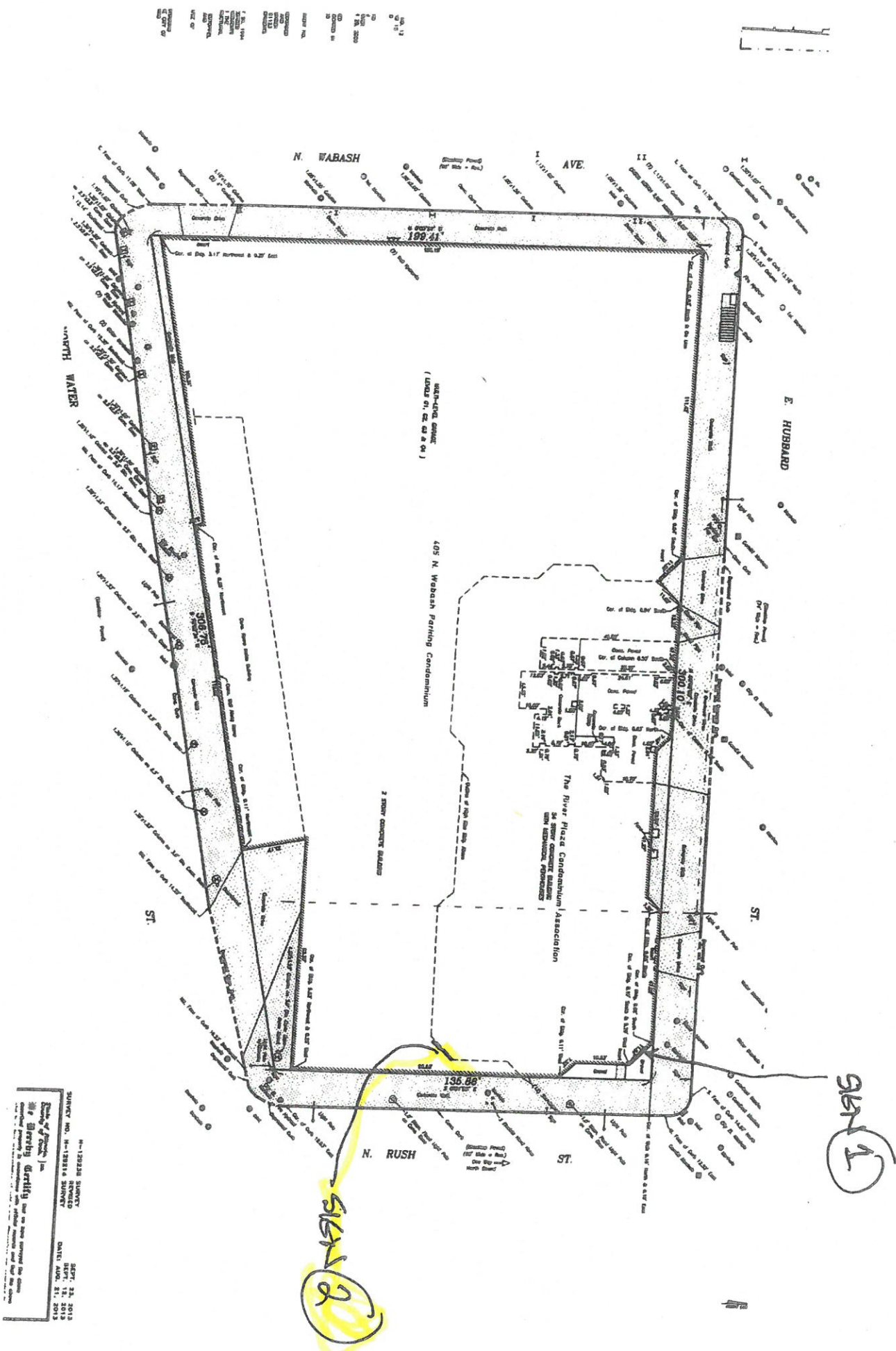
WORK ORDER 83884

FILE NAME LAS83884

REVISIONS:

1	
2	
3	
4	
5	
6	
7	
8	

This sign is intended to be installed in accordance with the requirements of Article 600 of the National Electrical Code and/or other applicable local codes. This includes proper grounding and bonding of the sign.



N-132328 SURVEY
 SURVEY NO. N-132328 SURVEY
 DATE: AUG. 31, 2012
 DEPT. 24 2012
 SURVEYED BY: [Name]
 CHECKED BY: [Name]
 DRAWN BY: [Name]

1. The Plat
 2. The Plat
 3. The Plat
 4. The Plat
 5. The Plat
 6. The Plat
 7. The Plat
 8. The Plat
 9. The Plat
 10. The Plat
 11. The Plat
 12. The Plat
 13. The Plat
 14. The Plat
 15. The Plat
 16. The Plat
 17. The Plat
 18. The Plat
 19. The Plat
 20. The Plat
 21. The Plat
 22. The Plat
 23. The Plat
 24. The Plat
 25. The Plat
 26. The Plat
 27. The Plat
 28. The Plat
 29. The Plat
 30. The Plat
 31. The Plat
 32. The Plat
 33. The Plat
 34. The Plat
 35. The Plat
 36. The Plat
 37. The Plat
 38. The Plat
 39. The Plat
 40. The Plat
 41. The Plat
 42. The Plat
 43. The Plat
 44. The Plat
 45. The Plat
 46. The Plat
 47. The Plat
 48. The Plat
 49. The Plat
 50. The Plat
 51. The Plat
 52. The Plat
 53. The Plat
 54. The Plat
 55. The Plat
 56. The Plat
 57. The Plat
 58. The Plat
 59. The Plat
 60. The Plat
 61. The Plat
 62. The Plat
 63. The Plat
 64. The Plat
 65. The Plat
 66. The Plat
 67. The Plat
 68. The Plat
 69. The Plat
 70. The Plat
 71. The Plat
 72. The Plat
 73. The Plat
 74. The Plat
 75. The Plat
 76. The Plat
 77. The Plat
 78. The Plat
 79. The Plat
 80. The Plat
 81. The Plat
 82. The Plat
 83. The Plat
 84. The Plat
 85. The Plat
 86. The Plat
 87. The Plat
 88. The Plat
 89. The Plat
 90. The Plat
 91. The Plat
 92. The Plat
 93. The Plat
 94. The Plat
 95. The Plat
 96. The Plat
 97. The Plat
 98. The Plat
 99. The Plat
 100. The Plat