



# City of Chicago



O2013-4731

Office of the City Clerk

## Document Tracking Sheet

<b>Meeting Date:</b>	6/5/2013
<b>Sponsor(s):</b>	Tunney, Thomas (44)
<b>Type:</b>	Ordinance
<b>Title:</b>	Grant(s) of privilege in public way for Whole Foods Market
<b>Committee(s) Assignment:</b>	Committee on Transportation and Public Way

ORDINANCE  
WHOLE FOODS MARKET  
Acct. No. 86298 - 4  
Permit No. 1105590

*Be It Ordained by the City Council of the City of Chicago:*

SECTION 1. Permission and authority are hereby given and granted to WHOLE FOODS MARKET, upon the terms and subject to the conditions of this ordinance to maintain and use three (3) sign(s) projecting over the public right-of-way attached to its premises known as 3300 N. Ashland Ave..

Said sign structure(s) measures as follows; along N ASHLAND AVE:

One (1) at fourteen point three three (14.33) feet in length, three point eight three (3.83) feet in height and thirteen (13) feet above grade level.

One (1) at twelve (12) feet in length, three point four two (3.42) feet in height and thirteen (13) feet above grade level.

One (1) at twenty-five (25) feet in length, one point six seven (1.67) feet in height and thirteen (13) feet above grade level.

The location of said privilege shall be as shown on prints kept on file with the Department of Business Affairs and Consumer Protection and the Office of the City Clerk.

Said privilege shall be constructed in accordance with plans and specifications approved by the Department of Transportation (Division of Project Development) and Zoning Department - Signs.

This grant of privilege in the public way shall be subject to the provisions of Section 10-28-015 and all other required provisions of the Municipal Code of Chicago.

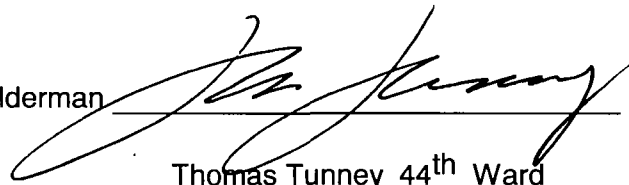
The grantee shall pay to the City of Chicago as compensation for the privilege #1105590 herein granted the sum of nine hundred (\$900.00) per annum in advance.

A 25% penalty will be added for payments received after due date.

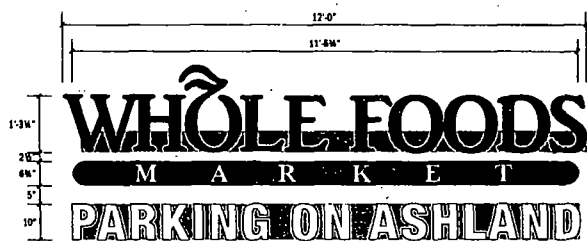
The permit holder agrees to hold the City of Chicago harmless for any damage, relocation or replacement costs associated with damage, relocation or removal of private property caused by the City performing work in the public way.

Authority herein given and granted for a period of five (5) years from and after Date of Passage.

Alderman



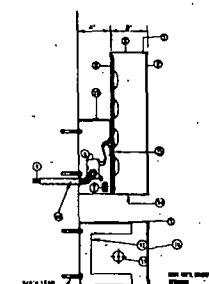
Thomas Tunney 44<sup>th</sup> Ward



**A** **Q0623** NEW INTERNALLY ILLUMINATED CHANNEL LETTER DISPLAYS  
SCALE: 1/2"=1"  
"WHOLE FOODS" USE WHITE PLEX FACED WITH APPLIED SW #8330-26 GREEN VINYL TRIM CAP AND RETURNS TO MATCH PWS #349. MOUNT TO RACEWAY ILLUMINATE WITH GREEN LED.  
"MARKET..." TO BE FABRICATED ALUMINUM CABINET WITH WHITE PLEX FACED W/ APPLIED SW #8330-26 GREEN VINYL. GREEN TRIM CAP AND RETURNS TO MATCH PWS #349. RETURN TO BE UNMOUNTED. WHITE AND GREEN LED ILLUMINATION.  
"PARING..." TO BE WHITE PLEX FACED CHANNEL LETTERS, WHITE TRIM CAP, BLACK RETURNS. RACEWAY MOUNT, ILLUMINATE WITH WHITE LED



**WEST ELEVATION / Sign Location**  
SCALE: 1/4" = 1'-0"

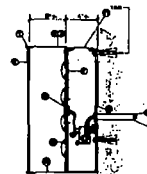


Doc. Section Type "TYPE-A" Display

- |    |   |    |  |
|----|---|----|--|
| 1  | 70% 2 1/2" X 3 1/2" PHOTO-PAK GREEN     | 10 | 10% FLEXIBLE 1/2" X 1/2" PHOTO-PAK COLORED |
| 2  | 10% WHITE ACTIFLEX RACE - RUST          | 11 | 10% LOCAL COLORED, BLACKISH GRAY           |
| 3  | SCARLET 2 1/2" X 3 1/2" GREEN 10% WHITE | 12 | ALL PERMUTATIONS - 10%                     |
| 4  | 10% 10% 10% 10% 10% 10% 10% 10% 10% 10% | 13 | 10% 10% 10% 10% 10% 10% 10% 10% 10% 10%    |
| 5  | 10% 10% 10% 10% 10% 10% 10% 10% 10% 10% | 14 | 10% 10% 10% 10% 10% 10% 10% 10% 10% 10%    |
| 6  | 10% 10% 10% 10% 10% 10% 10% 10% 10% 10% | 15 | 10% 10% 10% 10% 10% 10% 10% 10% 10% 10%    |
| 7  | 10% 10% 10% 10% 10% 10% 10% 10% 10% 10% | 16 | 10% 10% 10% 10% 10% 10% 10% 10% 10% 10%    |
| 8  | 10% 10% 10% 10% 10% 10% 10% 10% 10% 10% | 17 | 10% 10% 10% 10% 10% 10% 10% 10% 10% 10%    |
| 9  | 10% 10% 10% 10% 10% 10% 10% 10% 10% 10% | 18 | 10% 10% 10% 10% 10% 10% 10% 10% 10% 10%    |
| 10 | 10% 10% 10% 10% 10% 10% 10% 10% 10% 10% | 19 | 10% 10% 10% 10% 10% 10% 10% 10% 10% 10%    |
| 11 | 10% 10% 10% 10% 10% 10% 10% 10% 10% 10% | 20 | 10% 10% 10% 10% 10% 10% 10% 10% 10% 10%    |
| 12 | 10% 10% 10% 10% 10% 10% 10% 10% 10% 10% | 21 | 10% 10% 10% 10% 10% 10% 10% 10% 10% 10%    |
| 13 | 10% 10% 10% 10% 10% 10% 10% 10% 10% 10% | 22 | 10% 10% 10% 10% 10% 10% 10% 10% 10% 10%    |
| 14 | 10% 10% 10% 10% 10% 10% 10% 10% 10% 10% | 23 | 10% 10% 10% 10% 10% 10% 10% 10% 10% 10%    |
| 15 | 10% 10% 10% 10% 10% 10% 10% 10% 10% 10% | 24 | 10% 10% 10% 10% 10% 10% 10% 10% 10% 10%    |
| 16 | 10% 10% 10% 10% 10% 10% 10% 10% 10% 10% | 25 | 10% 10% 10% 10% 10% 10% 10% 10% 10% 10%    |
| 17 | 10% 10% 10% 10% 10% 10% 10% 10% 10% 10% | 26 | 10% 10% 10% 10% 10% 10% 10% 10% 10% 10%    |
| 18 | 10% 10% 10% 10% 10% 10% 10% 10% 10% 10% | 27 | 10% 10% 10% 10% 10% 10% 10% 10% 10% 10%    |
| 19 | 10% 10% 10% 10% 10% 10% 10% 10% 10% 10% | 28 | 10% 10% 10% 10% 10% 10% 10% 10% 10% 10%    |
| 20 | 10% 10% 10% 10% 10% 10% 10% 10% 10% 10% | 29 | 10% 10% 10% 10% 10% 10% 10% 10% 10% 10%    |
| 21 | 10% 10% 10% 10% 10% 10% 10% 10% 10% 10% | 30 | 10% 10% 10% 10% 10% 10% 10% 10% 10% 10%    |
| 22 | 10% 10% 10% 10% 10% 10% 10% 10% 10% 10% | 31 | 10% 10% 10% 10% 10% 10% 10% 10% 10% 10%    |
| 23 | 10% 10% 10% 10% 10% 10% 10% 10% 10% 10% | 32 | 10% 10% 10% 10% 10% 10% 10% 10% 10% 10%    |
| 24 | 10% 10% 10% 10% 10% 10% 10% 10% 10% 10% | 33 | 10% 10% 10% 10% 10% 10% 10% 10% 10% 10%    |
| 25 | 10% 10% 10% 10% 10% 10% 10% 10% 10% 10% | 34 | 10% 10% 10% 10% 10% 10% 10% 10% 10% 10%    |
| 26 | 10% 10% 10% 10% 10% 10% 10% 10% 10% 10% | 35 | 10% 10% 10% 10% 10% 10% 10% 10% 10% 10%    |
| 27 | 10% 10% 10% 10% 10% 10% 10% 10% 10% 10% | 36 | 10% 10% 10% 10% 10% 10% 10% 10% 10% 10%    |
| 28 | 10% 10% 10% 10% 10% 10% 10% 10% 10% 10% | 37 | 10% 10% 10% 10% 10% 10% 10% 10% 10% 10%    |
| 29 | 10% 10% 10% 10% 10% 10% 10% 10% 10% 10% | 38 | 10% 10% 10% 10% 10% 10% 10% 10% 10% 10%    |
| 30 | 10% 10% 10% 10% 10% 10% 10% 10% 10% 10% | 39 | 10% 10% 10% 10% 10% 10% 10% 10% 10% 10%    |
| 31 | 10% 10% 10% 10% 10% 10% 10% 10% 10% 10% | 40 | 10% 10% 10% 10% 10% 10% 10% 10% 10% 10%    |
| 32 | 10% 10% 10% 10% 10% 10% 10% 10% 10% 10% | 41 | 10% 10% 10% 10% 10% 10% 10% 10% 10% 10%    |
| 33 | 10% 10% 10% 10% 10% 10% 10% 10% 10% 10% | 42 | 10% 10% 10% 10% 10% 10% 10% 10% 10% 10%    |
| 34 | 10% 10% 10% 10% 10% 10% 10% 10% 10% 10% | 43 | 10% 10% 10% 10% 10% 10% 10% 10% 10% 10%    |
| 35 | 10% 10% 10% 10% 10% 10% 10% 10% 10% 10% | 44 | 10% 10% 10% 10% 10% 10% 10% 10% 10% 10%    |
| 36 | 10% 10% 10% 10% 10% 10% 10% 10% 10% 10% | 45 | 10% 10% 10% 10% 10% 10% 10% 10% 10% 10%    |
| 37 | 10% 10% 10% 10% 10% 10% 10% 10% 10% 10% | 46 | 10% 10% 10% 10% 10% 10% 10% 10% 10% 10%    |
| 38 | 10% 10% 10% 10% 10% 10% 10% 10% 10% 10% | 47 | 10% 10% 10% 10% 10% 10% 10% 10% 10% 10%    |
|    |   |    |  |

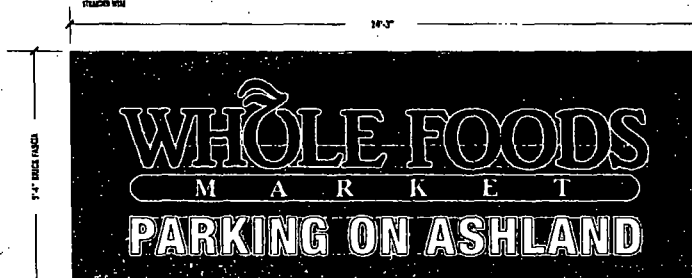
### Position thru Letters

- 1 1" TRIM CAP - WHITE  
2 2447-177 ACQUYLE FACE - WHITE  
3 400 ALLUMINUM RETURN - BLACK  
4 TRANSFORMER CLASS 8 12V  
5 SAFETY SWITCH  
6 400 ALLUMINUM BRASS  
7 120V PRIMARY, 1N 12 TRIM  
8 STRAPPED WIRE - 1-20 AMP CIRCUIT  
9 FLEXIBLE WEATHERPROOF  
10 CORNER PER LOCAL CODE  
11 MILDSTEEL BEAL ALL PENETRATIONS  
12 UP APPROVED STANDARD BUSHING  
13 ALUM. FIB D. RACKERY w/ ACCESS LK  
14 1/2" DRAIN HOLE  
15  
16 RACKERY FINISH TO SEASON  
17 MILDSTEEL COLOR



Section / M.A.L.D. / Mrs. Chagard Lette

**Sign components to**



**ELEVATION / New L.E.D. Illum'd. Race Mount Letters**  
ONE (1) SET REQ'D. SCALE: 1/2"=1'-0"

[illegible]

**CUSTOMER APPROVAL** \_\_\_\_\_ **DATE** \_\_\_\_\_

This design is the original and unpublished work of DOYLE SKOBS, INC. and may not be reproduced, copied or simulated in any fashion without the expressed written consent from an authorized officer of The Company.

CLIENT	WHOLE FOODS MARKET	INVOICE#	DF	SALES	TD
ADDRESS	SCHOOL ST. & LINCOLN AVE. LAKEVIEW, IL.	SCALE:	NOTED	DATE:	2-10-10
		SHIPPING No.	#11961	CHECK No.	1 of 5



**06/05/2013**

Alderman **Thomas Tunney**  
Ward # **44**  
City of Chicago  
City Hall, Room **203**  
121 North LaSalle Street  
Chicago, Illinois 60602

Re: An ordinance to use and maintain a portion of the public right-of-way for **three (3) sign(s)** for  
**WHOLE FOODS MARKET**, adjacent to the premises known as **3300 N. Ashland Ave..**

Dear Alderman **Thomas Tunney**:

The applicant referenced above has requested the use of the public right-of-way for a **sign(s)**. An ordinance has been prepared by the Department of Business Affairs and Consumer Protection – Business Assistance Center - Public Way Use Unit for presentation to the City Council. Because this request was made for properties located in your ward, as approved by you as per the attached, I respectfully request that you introduce the attached ordinance at the next City Council meeting.

If you have any questions regarding this ordinance, please contact Anthony Bertuca at (312) 744-5506.

**Department of Business Affairs and Consumer Protection**