



City of Chicago



Or2019-483

Office of the City Clerk

Document Tracking Sheet

Meeting Date:	11/13/2019
Sponsor(s):	Burnett (27)
Type:	Order
Title:	Issuance of permits for sign(s)/signboard(s) at 333 N Green St
Committee(s) Assignment:	Committee on Zoning, Landmarks and Building Standards

CITY COUNCIL
COMMITTEE ON ZONING, LANDMARKS AND BUILDING STANDARDS

COUNCIL ORDER

RE: Approval of sign over 100 square feet in area or over 24 feet above grade

ORDERED, that the City Council hereby approves the following sign application submitted by:

Applicant*: 333 N. Green LLC, Randy Grueb

(* The Applicant is the owner of the real property or the business tenant of the real property. Do not list the sign contractor, sign erector, sign company or advertising entity in the above space.)

This Order approves the following sign in accordance with Municipal Code of Chicago Section 13-20-680:

Address of Sign: 333 N. Green Street Chicago, IL 60607

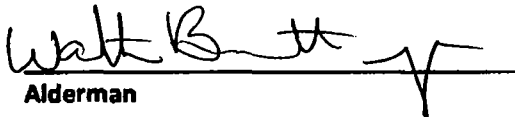
Zoning District: PD-1403

DOB Sign Permit Application #: 100824124

Sign Details:

1. On-premise OR Off-premise
2. Static sign OR Dynamic-image display sign
3. Number of sign faces 1
4. Projecting over the public way No (Yes or No) If yes, Public Way Use #: N/A
5. Dimensions: Length 28 feet 0 inches Height 12 feet 0 inches
Total square feet in area: 333 feet 0 inches
6. Height above grade: 50 feet 0 inches
7. Elevation (side of building or lot where the sign will be erected): West
8. Name of Sign Contractor/Erector: Landmark Signs, Inc.

To be legal, such sign shall comply with all provisions of Title 17 of the Chicago Municipal Code ("Zoning Ordinance") and all other provisions of the Municipal Code governing the permitting, construction and maintenance and removal of signs and sign structures. Failure of the applicant and the applicant's successors to comply shall be grounds for invalidation or revocation of the sign permit.


Alderman

27
Ward

By signing the LICENSE RECEIVED on this print, I understand that I am accepting all aspects of this drawing. X
 This includes artwork, specifications, dimensions, spacing, and all other representations herein.
 I also understand that color reproduction on this print are approximate, and may not match manufacturer's standard exactly.

DATE: 10/22/19
 DATE: 10/22/19
 DATE: 10/22/19



7424 Industrial Avenue
 Chesterton, IN 46304
 Phone 219.762.8577
 Fax 219.762.4259
 www.landmarksign.com

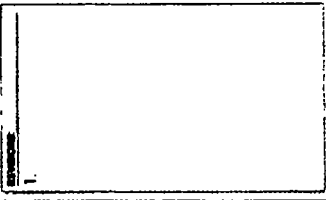
PRINT #
SE-25176-1NEWOP2
 SHAUN ENSIGN
 LEAD SALES REPRESENTATIVE

10.22.19
 DATE

333 N. GREEN
 CLIENT NAME

333 N. GREEN
 CHICAGO, IL
 JOB LOCATION

AS NOTED
 SCALE



THIS DRAWING IS THE PROPERTY OF
 LANDMARK SIGN GROUP. IT IS
 TO BE USED ONLY FOR THE PROJECT
 SPECIFICALLY IDENTIFIED HEREON.
 IT IS NOT TO BE REPRODUCED,
 COPIED, OR TRANSMITTED IN ANY
 FORM OR BY ANY MEANS, WITHOUT
 THE WRITTEN PERMISSION OF
 LANDMARK SIGN GROUP.

City of Chicago Permit Drawing

#69080	Landmark Sign Group
Sign Type:	Channel Letters
Overall Size:	12'-0" x 28'-0"
Square Footage:	336 S.F.
Approx Weight:	930 lbs
Volt/Ampere Load:	4.2A @ 110v AC
Branch Circuit(s) Required:	1
Lamp:	LED
Watts:	504
Power Supplies:	6

2018 ELECTRICAL CODE

12'-0" 28'-0 1/4"

Front View 3/16" = 1'-0"

▶ ONE SET OF FABRICATED ALUMINUM ADDRESS NUMBERS/ INTERNALLY ILLUMINATED WITH LED's/ EXT. PAINTED/ MOUNTED TO EXISTING BUILDING STRUCTURE WITH FABRICATED STEEL MOUNTING BRACKETS/ EXT. PAINTED

- LETTER FACES = MAP TO MATCH VALSPAR 399C9323 GRAPHITE GREY
- LETTER RETURNS = MATTHEWS PAINT MP13915 NEPTUNIAN GREY
- MOUNTING BRACKETS AND SUPPORTS = MATTHEWS PAINT MP13915 NEPTUNIAN GREY
- ILLUMINATED RETURN PORTION = TRANS WHITE LEXAN with BLACK PERF VINYL
- ILLUMINATION = WHITE LED's

STERLING BAY
1400 Westwood
Chicago, IL 60607

Gensler

WSP

GLD

CCLD

CCLD

CCLD

CCLD

CCLD

CCLD

CCLD

CCLD

CCLD

CCLD

CCLD

CCLD

CCLD

CCLD

CCLD

CCLD

CCLD

CCLD

CCLD

CCLD

CCLD

CCLD

CCLD

CCLD

CCLD

CCLD

CCLD

CCLD

CCLD

CCLD

CCLD

CCLD

CCLD

CCLD

CCLD

CCLD

CCLD

CCLD

CCLD

CCLD

CCLD

CCLD

CCLD

CCLD

CCLD

CCLD

CCLD

CCLD

CCLD

CCLD

CCLD

CCLD

CCLD

CCLD

CCLD

CCLD

CCLD

CCLD

CCLD

CCLD

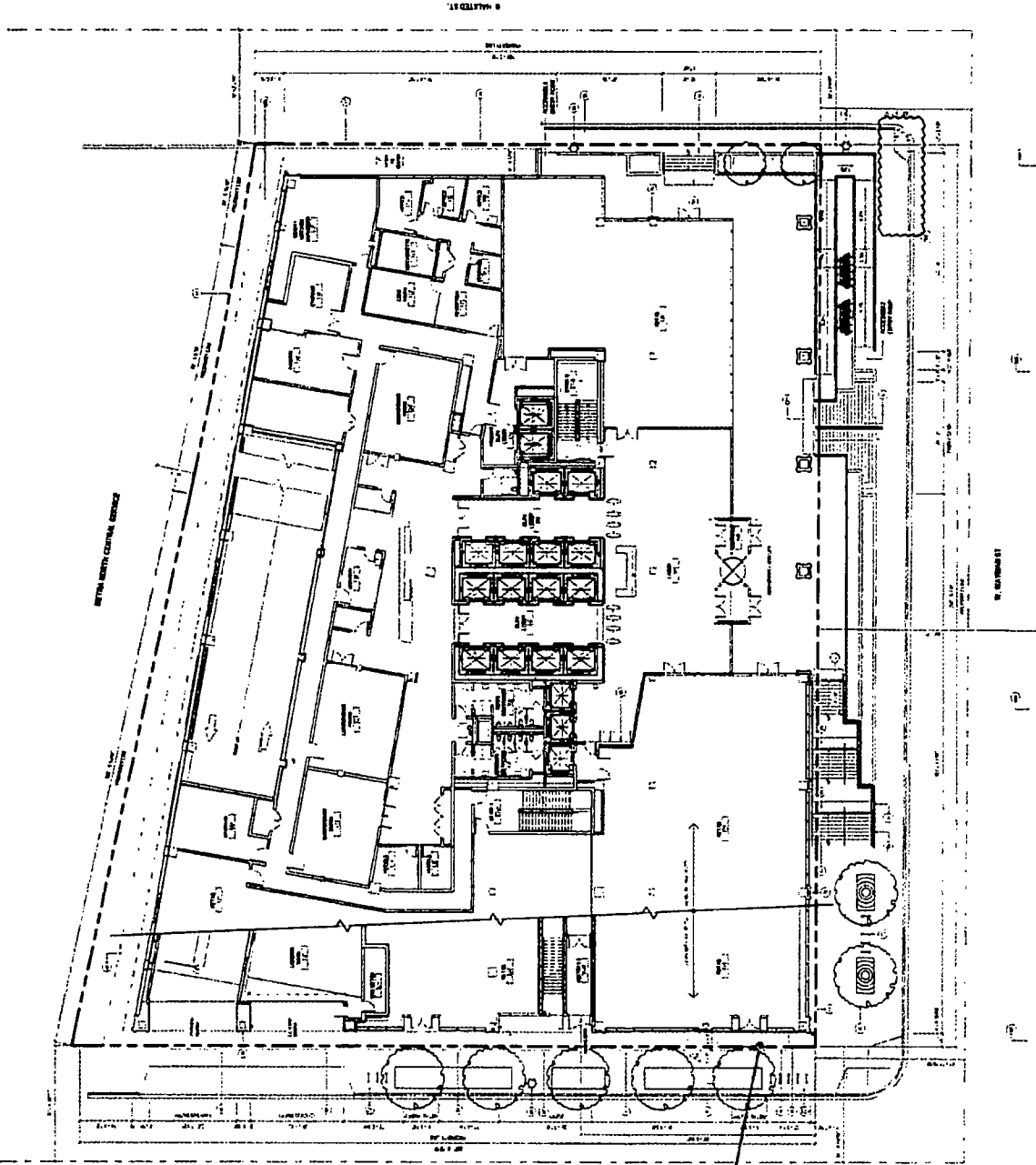
CCLD

SHEET NOTES

- 1. SEE GENERAL NOTES FOR ALL NOTES.
- 2. SEE GENERAL NOTES FOR ALL NOTES.
- 3. SEE GENERAL NOTES FOR ALL NOTES.
- 4. SEE GENERAL NOTES FOR ALL NOTES.
- 5. SEE GENERAL NOTES FOR ALL NOTES.
- 6. SEE GENERAL NOTES FOR ALL NOTES.
- 7. SEE GENERAL NOTES FOR ALL NOTES.
- 8. SEE GENERAL NOTES FOR ALL NOTES.
- 9. SEE GENERAL NOTES FOR ALL NOTES.
- 10. SEE GENERAL NOTES FOR ALL NOTES.

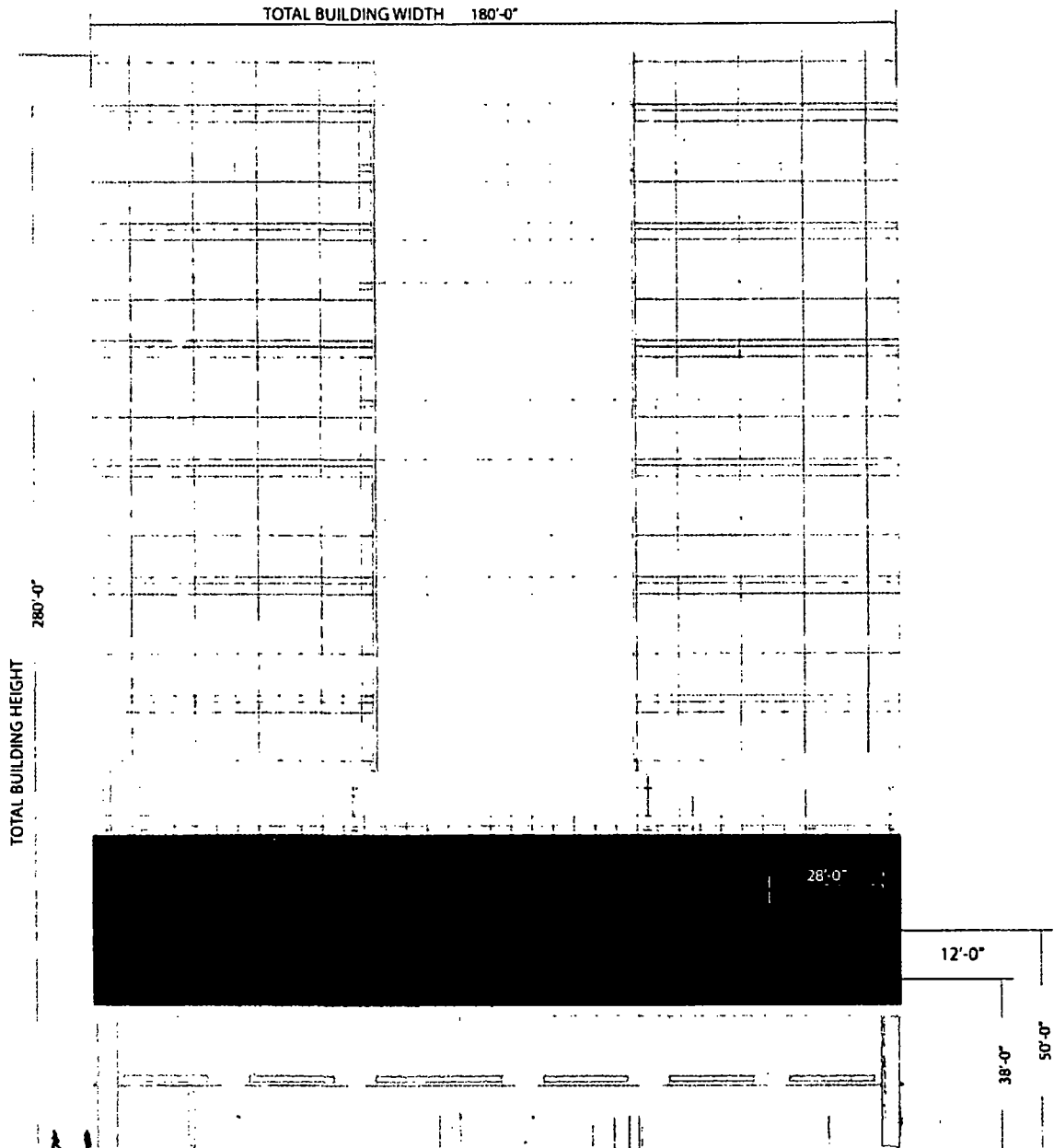
GENERAL NOTES

- 1. SEE GENERAL NOTES FOR ALL NOTES.
- 2. SEE GENERAL NOTES FOR ALL NOTES.
- 3. SEE GENERAL NOTES FOR ALL NOTES.
- 4. SEE GENERAL NOTES FOR ALL NOTES.
- 5. SEE GENERAL NOTES FOR ALL NOTES.
- 6. SEE GENERAL NOTES FOR ALL NOTES.
- 7. SEE GENERAL NOTES FOR ALL NOTES.
- 8. SEE GENERAL NOTES FOR ALL NOTES.
- 9. SEE GENERAL NOTES FOR ALL NOTES.
- 10. SEE GENERAL NOTES FOR ALL NOTES.



Project No. 21.0003.000
Project Name PROTECTION SYSTEM
Date 11/11/03

City of Chicago Permit Drawing



Placement Render West Elevation - Green Street N.T.S.

Ⓜ #69080	Landmark Sign Group
Sign Type:	Channel Letters
Overall Size:	12'-0" x 28'-0"
Square Footage:	336.5 F.
Approx Weight:	930 lbs
Volt/Ampere Load:	4.2A @ 110v AC
Branch Circuit(s) Required:	1
Lamp:	LED
Watts:	504
Power Supplies:	6

2018 ELECTRICAL CODE

Designed
for
110/277 Volts
Electrical Connections may be
Vehicle unless S.P. at time of
Installation. Second Trip will
be Charged at Time & Materials



Landmark
Sign Group
www.landmarksign.com



7424 Industrial Avenue
Chesterton, IN 46304
phone 319.762.9377
fax 319.762.4239

SE-25178-1NEWCP
PRINT #

333 N. GREEN
CLIENT NAME
10.22.19
DATE

SHAUGH ENSIGN
LSG SALES REP.

533 N. GREEN
CHICAGO, IL
JOB LOCATION
JL
DRAWN BY

N.T.S.
SCALE

REVISIONS:

1.

<input checked="" type="checkbox"/>	Customer Acceptance SIGNATURE	DATE
<input checked="" type="checkbox"/>	IF REQUIRED: Landlord Acceptance SIGNATURE	DATE
	LSG SALES INITIALS	DATE

THIS DRAWING IS THE PROPERTY OF LANDMARK SIGN GROUP, INC. NO REPRODUCTIONS OR COPIES ARE PERMITTED WITHOUT THE EXPRESS WRITTEN CONSENT OF LANDMARK SIGN GROUP, INC. AN ASSESSMENT OF UP TO \$250.00 WILL BE CHARGED FOR ANY REUSE OF THIS DRAWING. By signing the Customer Acceptance on this print, I understand that I am accepting all aspects of this drawing. This includes Artwork, Specifications, Dimensions, Spelling, and all other representations herein. I also understand that color reproductions on this print are approximate, and may not match manufacturer's samples exactly.

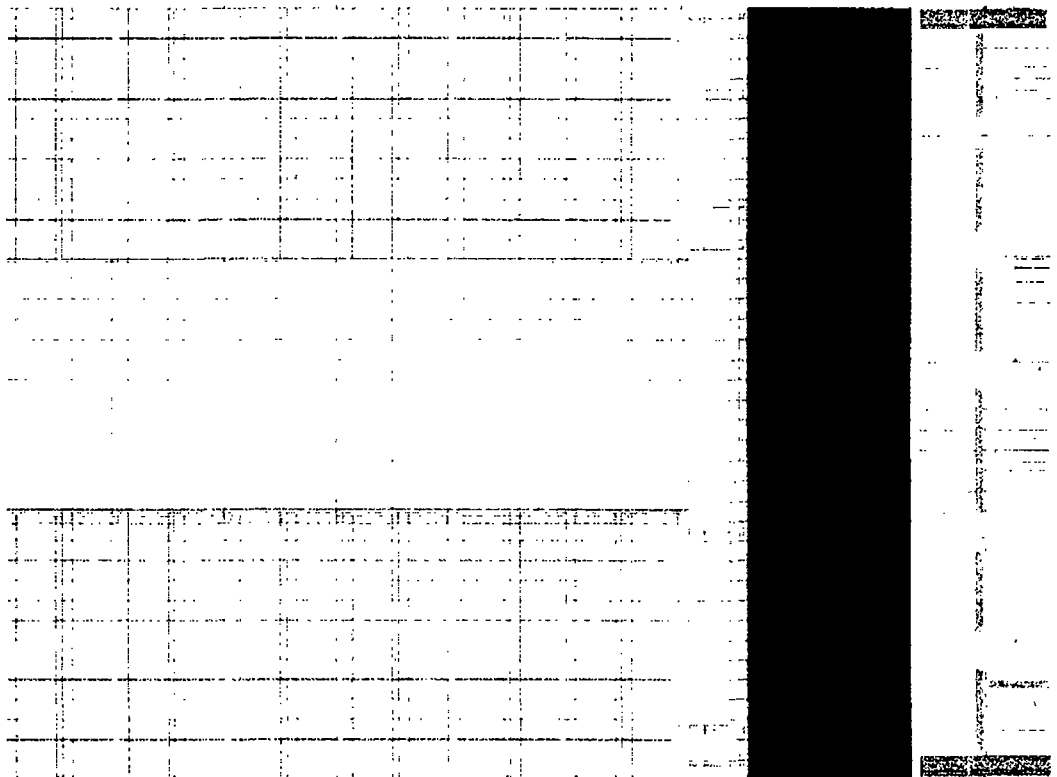
EXTERIOR BRAND SIGNAGE 333 SHOWN
BELOW SCALED TO 12' HEIGHT

333

12'-0"

8'-0" 2'-1" 8'-0" 2'-4" 8'-0"

2 SIGNAGE ELEVATION - 333
SCALE 1/8" = 1'-0"



12'-0"

1 EXTERIOR ELEVATION - WEST - GREEN STREET
SCALE 1/8" = 1'-0"