



Office of the City Clerk



O2013-1171

Office of the City Clerk

City Council Document Tracking Sheet

Meeting Date: 2/13/2013

Sponsor(s): Reilly, Brendan (42)

Type: Ordinance

Title: Grant(s) of privilege in public way for Corner Bakery Cafe - sign

Committee(s) Assignment: Committee on Transportation and Public Way

ORDINANCE
CORNER BAKERY CAFE
Acct. No. 298727 - 14
Permit No. 1104342

Be It Ordained by the City Council of the City of Chicago:

SECTION 1. Permission and authority are hereby given and granted to CORNER BAKERY CAFE, upon the terms and subject to the conditions of this ordinance to maintain and use two (2) sign(s) projecting over the public right-of-way attached to its premises known as 35 E. Monroe St..

Said sign structure(s) measures as follows; along E. Monroe Street:

One (1) at eighteen point eight three (18.83) feet in length, four point eight three (4.83) feet in height and twelve (12) feet above grade level.

Said sign structure(s) measures as follows; along S. Wabash Avenue:

One (1) at eighteen point eight three (18.83) feet in length, four point eight three (4.83) feet in height and twelve point nine two (12.92) feet above grade level.

The location of said privilege shall be as shown on prints kept on file with the Department of Business Affairs and Consumer Protection and the Office of the City Clerk.

Said privilege shall be constructed in accordance with plans and specifications approved by the Department of Transportation (Division of Project Development) and Zoning Department - Signs.

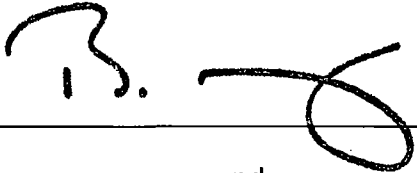
This grant of privilege in the public way shall be subject to the provisions of Section 10-28-015 and all other required provisions of the Municipal Code of Chicago.

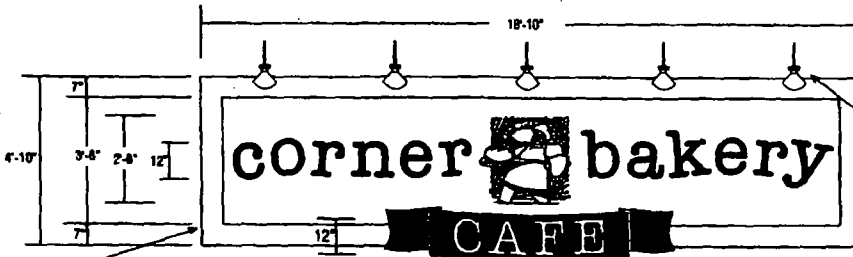
The grantee shall pay to the City of Chicago as compensation for the privilege #1104342 herein granted the sum of six hundred (\$600.00) per annum in advance.

A 25% penalty will be added for payments received after due date.

The permit holder agrees to hold the City of Chicago harmless for any damage, relocation or replacement costs associated with damage, relocation or removal of private property caused by the City performing work in the public way.

Authority herein given and granted for a period of five (5) years from and after 01/09/2013.

Alderman 
Brendan Reilly 42nd Ward



WOOD FRAME PAINTED ICI DULUX #355 FLAT "KAYAK BROWN".

5" DEEP ALUMINUM BKGD. PANEL PAINTED MATTHEWS #33A-2P WHIPPED CREAM YELLOW W/ MATTE FINISH.

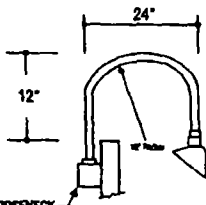
MEDIUM SIZE FORMED LEXAN DOUGHBOY W/ HAND PAINTED MULTI-COLOR FINISH.

2" DEEP ALUMINUM REVERSE CHANNEL LETTERS W/ MATTE BLACK RETURNS & FACES. LETTERS ARE NON-ILLUMINATED & ARE PIN-MOUNTED 2" OFF BKGD.

ROLLED .090 ALUMINUM MATTE BLACK RIBBON W/ E.C.O. WHITE ACRYLIC "CAFE" LETTERS W/ 1" BRUSHED ALUMINUM TRIM CAP RETURNS. MOUNT TO RIBBON W/ CLIPS.

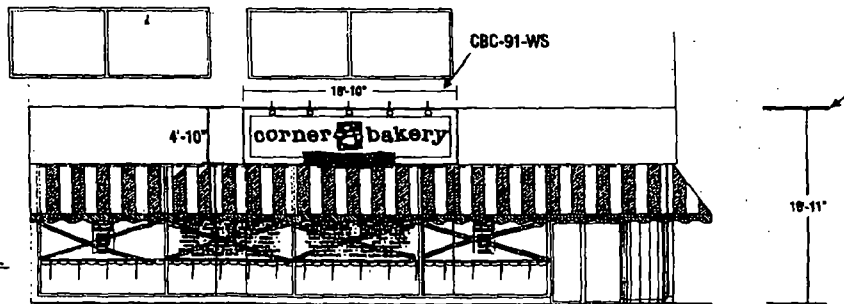
CBC-101-WS
WALL SIGN ELEVATION
 3/8" = 1'-0" (2) REVD

NOTE: GOOSENECK LIGHT FIXTURES MOUNTED TO TOP OF SIGNS TO BE PURCHASED BY HEATH. GOOSENECK FIXTURE IS "ABOLITE AD2200-42PL-BLK-WL-P63-WTRB". LAMP IS GE F420BK15P27.



3/4" SINGLE REFLECTOR GOOSENECK WALL BRACKET W/ PIPED CONDUIT & CAST WALL PLATE - MOUNTS TO RACEWAY BOX MOUNTED TO BACK OF SIGN (BY HEATH)

GOOSENECK MOUNTING DETAIL
 N.T.S.



EXTERIOR ELEVATION
 1/8" = 1'-0"

Wabash Ave.