

# Final for Publication

## Ordinance

BE IT ORDAINED BY THE CITY COUNCIL OF THE CITY OF CHICAGO:

SECTION 1. Title 17 of the Municipal Code of Chicago, the Chicago Zoning Ordinance, is hereby amended by changing all the M1-3 Limited Manufacturing/Business Park District symbols and indications as shown on Map No. 6-E in the area bounded by

Stevenson Expressway; a line 105.8 feet east of and parallel to South Wabash Avenue; a line 486.54 feet north of and parallel to West 26<sup>th</sup> Street; the alley next east of and parallel to South Wabash Avenue; a line 400.86 feet north of and parallel to West 26<sup>th</sup> Street; and South Wabash Street.

to those of a C1-3 Neighborhood Commercial District.

SECTION 2. This ordinance be in force and effect from and after its passage and due publication.

Common Address of Property: 2513-2517 S. Wabash Avenue, Chicago, Illinois

# Final for Publication

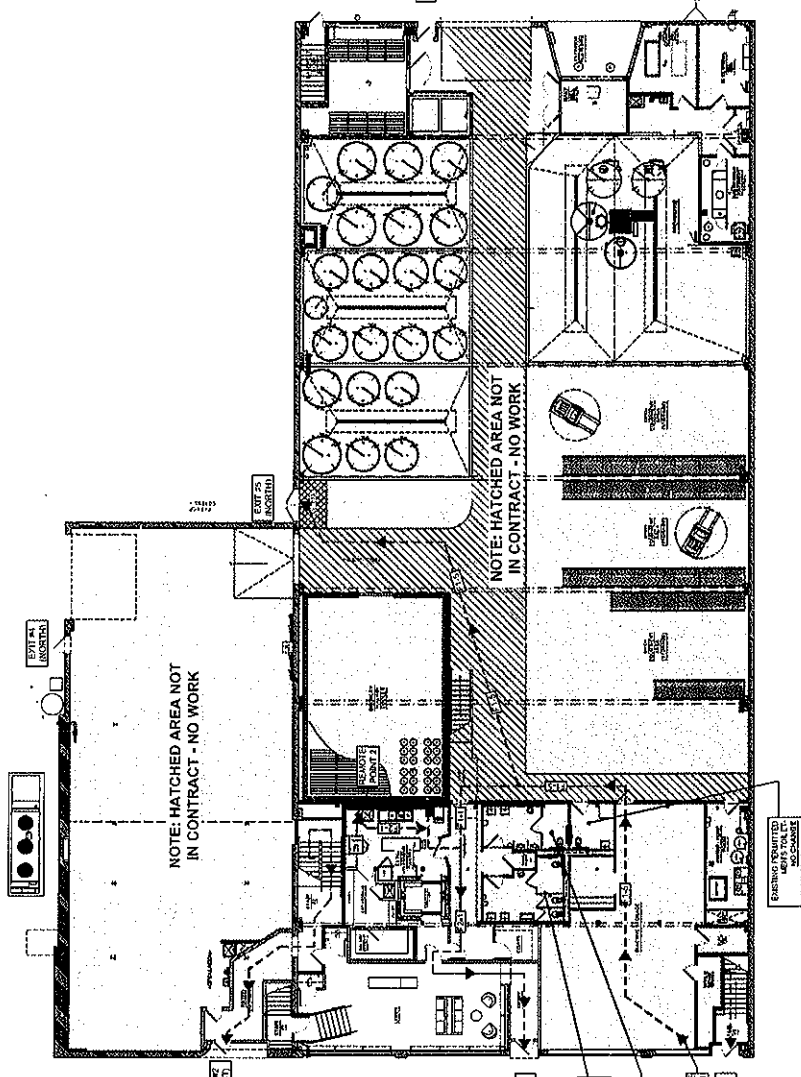
## Type 1 ZONING MAP AMENDMENT: NARRATIVE & PLANS

### 2513-2517 S. Wabash Avenue-M1-3 to C1-3

Applicant seeks to rezone the subject property to allow for the establishment of a Brew Pub and General Restaurant with Event Space in excess of the 4,000 square feet gross floor area that is currently not permitted in an M1-3 Zoning District.

FAR	1.16
Building Area	26,944 square feet
Density	N/A-No dwelling units
Lot Area	23,227 square feet
Building Height	26 feet 9 ¼ inches
Front Setback	0 feet
Rear Setback	0 feet
North Side Setback	0 feet
South Side Setback	0 feet
Parking	No Parking.





GROUND LEVEL OCCUPANCY PLAN  
SCALE: 1/8" = 1'-0"  
DATE: 01.25.2019

**K2 STUDIO**  
349 W. 181st STREET  
SUNNYVALE, CA 94088  
PHONE: 650-215-9988  
E: STUDIO@ARCHCL.COM

**MOODY TONGUE BREWING CO.**  
2915 S. WADSWORTH CIRCLE  
SUNNYVALE, CA 94088

#	DATE	REMARKS
1	01/25/2019	PERMIT SET

PHILIP KUPRITZ  
LAWYER REG. NO. 00468  
EMP. NUMBER 2949

NO. 14-004  
STATE OF CALIFORNIA

SHEET NUMBER **A011**

**OCCUPANCY MATRIX - MOODY TONGUE BREWERY**

OCCUPANCY CALCULATED FROM MOST TRAVEL DISTANCE BETWEEN 400-408 A WALKWAY AND 400-408 B WALKWAY

FLOOR	AREA	USE	AREA (SQ FT)	TYPE	AREA (SQ FT)	TOTAL AREA (SQ FT)
GROUND FLOOR	BAR	1	10,000	1	10,000	10,000
	KITCHEN	2	5,000	2	5,000	5,000
	RESTROOMS	3	1,000	3	1,000	1,000
	STAIRS	4	500	4	500	500
TOTAL						17,000

**MEASUREMENT OF TRAVEL DISTANCE: 10113-160-100**

MEASUREMENT OF TRAVEL DISTANCE: 10113-160-160

MAXIMUM DISTANCE FROM END OF CORRIDOR: 10113-160-160

**TRAVEL DISTANCE**

AREA	TRAVEL DISTANCE (FT)	TRAVEL DISTANCE (M)
10113-160-100	100	30.48
10113-160-160	160	48.77

**DESIGNATED TRAVEL DISTANCE**

AREA	TRAVEL DISTANCE (FT)	TRAVEL DISTANCE (M)
10113-160-100	100	30.48
10113-160-160	160	48.77

**EGRESS WIDTH CALCULATIONS - HORIZONTAL - 2ND FLOOR**

AREA	AREA (SQ FT)	MINIMUM WIDTH (FT)	MINIMUM WIDTH (M)
10113-160-200	10,000	44	13.41
10113-160-210	5,000	22	6.71
10113-160-220	1,000	4	1.22
10113-160-230	500	2	0.61
TOTAL	16,500	72	21.95

**EGRESS WIDTH CALCULATIONS - HORIZONTAL - 1ST FLOOR**

AREA	AREA (SQ FT)	MINIMUM WIDTH (FT)	MINIMUM WIDTH (M)
10113-160-100	10,000	44	13.41
10113-160-110	5,000	22	6.71
10113-160-120	1,000	4	1.22
10113-160-130	500	2	0.61
TOTAL	16,500	72	21.95

**CAPACITY OF EXITS INCREASE**

AREA: 10113-160-100

AREA: 10113-160-160

AREA: 10113-160-200

**CAPACITY OF EXITS - RHT13-160-210**

**SWING OF DOORS - 10113-160-230**

**EGRESS WIDTH CALCULATIONS - VERTICAL - 2ND FLOOR**

AREA	AREA (SQ FT)	MINIMUM WIDTH (FT)	MINIMUM WIDTH (M)
10113-160-200	10,000	44	13.41
10113-160-210	5,000	22	6.71
10113-160-220	1,000	4	1.22
10113-160-230	500	2	0.61
TOTAL	16,500	72	21.95

**CAPACITY OF EXITS INCREASE**

AREA: 10113-160-100


AREA: 10113-160-160

AREA: 10113-160-200

**MINIMUM WIDTH OF EXIT - 10113-160-210**

**MINIMUM WIDTH OF EXIT - 10113-160-230**


# Final for Publication



**K2 STUDIO**  
325 W. 18TH STREET  
SUNBELT BUILDING  
CHICAGO, IL 60608  
PH: 312.278.8600  
E: STUDIO@K2ARCH.COM

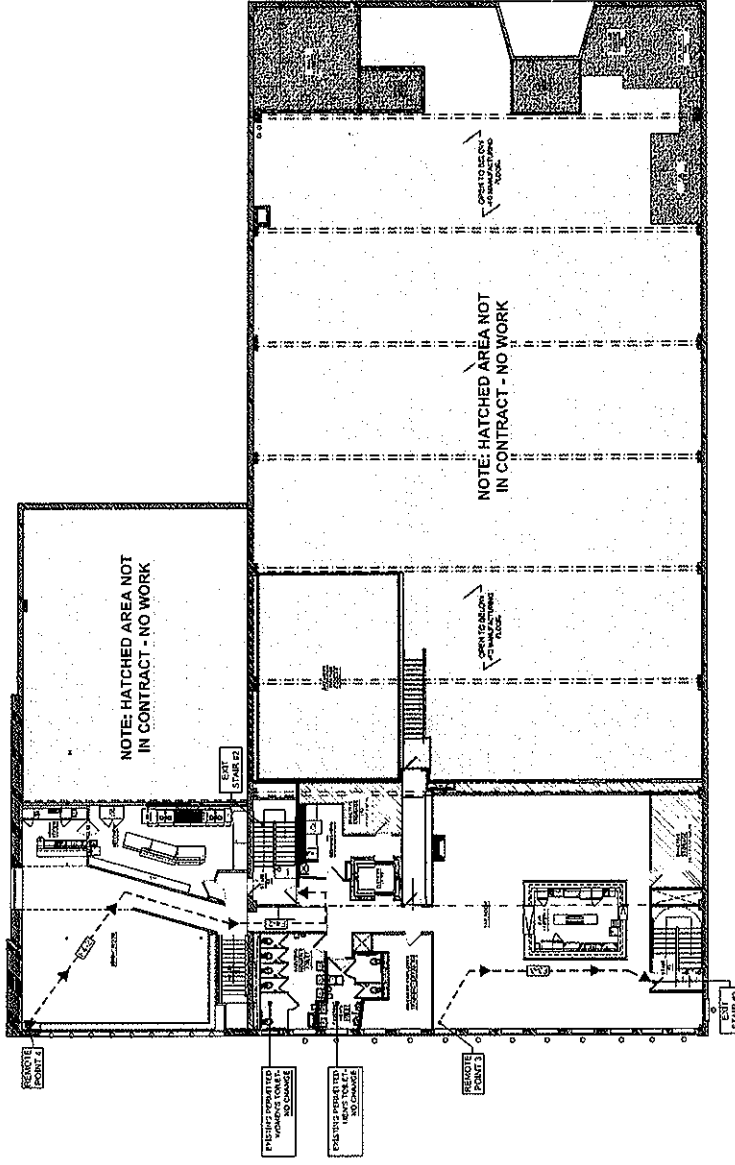
**MOODY TONGUE**  
DESIGN CO.  
2815 S. WILSON AVENUE, #11  
CHICAGO, IL 60608

**PERMIT SET**  
01.25.2019



**PHILLIP KUZMA**  
REGISTERED PROFESSIONAL ENGINEER  
NO. 614898  
STATE OF ILLINOIS  
EXPIRES NOVEMBER 2019

**SHEET NUMBER**  
**A012**



### SECOND LEVEL OCCUPANCY PLAN



**SCALE: 1/8" = 1'-0"**

**DATE:** 01.25.2019

**REVISIONS:**

#	DATE	REVISIONS
1	01.25.2019	PERMIT SET

SUBTOTAL	NO. OF PERSONS	CAPACITY
1	25	25
2	25	25
3	25	25
4	25	25
5	25	25
6	25	25
7	25	25
8	25	25
9	25	25
10	25	25
11	25	25
12	25	25
13	25	25
14	25	25
15	25	25
16	25	25
17	25	25
18	25	25
19	25	25
20	25	25
21	25	25
22	25	25
23	25	25
24	25	25
25	25	25

**MEASUREMENT OF TRAVEL DISTANCE: 1013-101-130**

**MAXIMUM DISTANCE FROM END OF CORRIDOR: 1013-101-160**

NO.	TRAVEL DISTANCE	START POINT	END POINT	SIZE	LEVEL
1	1013-101-130	1013-101-130	1013-101-130	1013-101-130	1013-101-130
2	1013-101-160	1013-101-160	1013-101-160	1013-101-160	1013-101-160

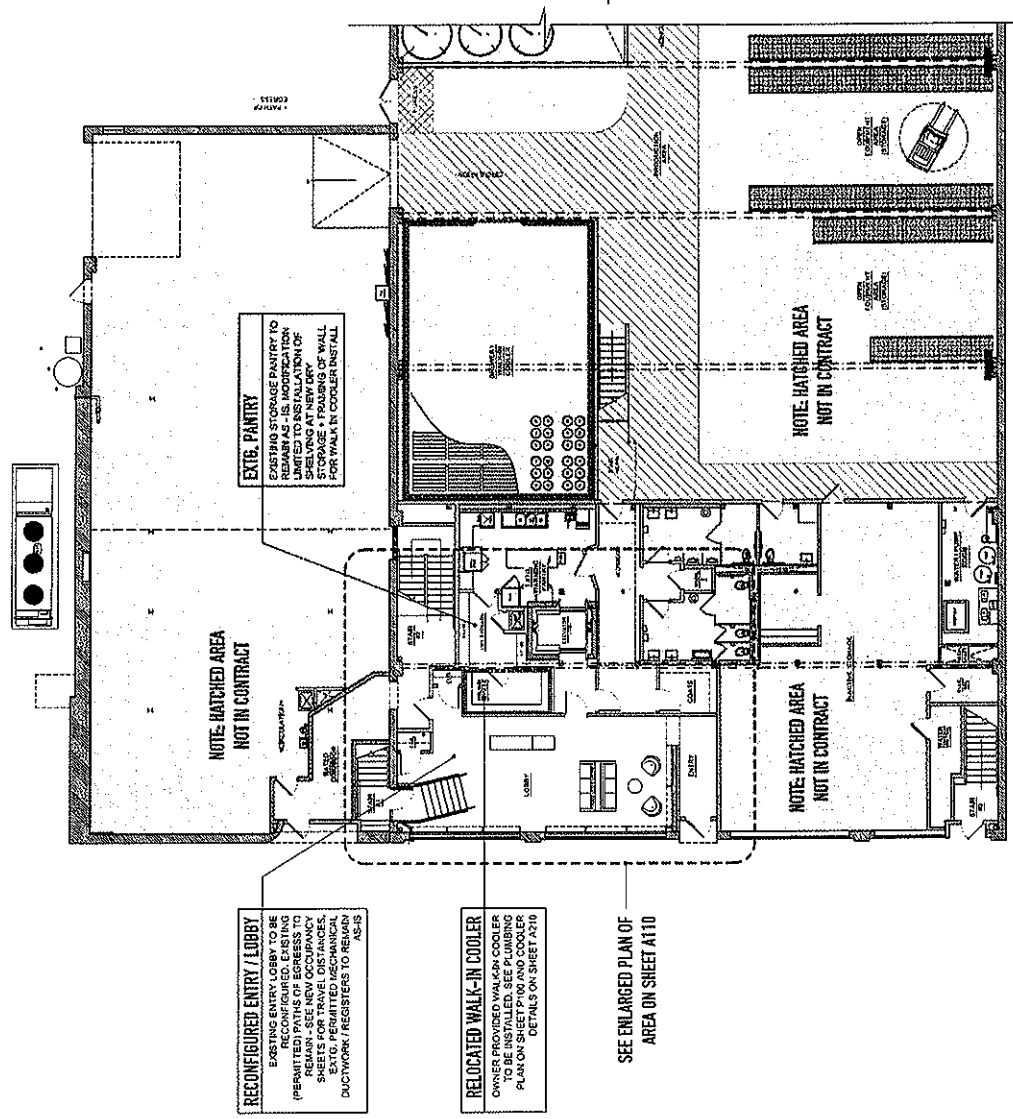
NO.	EXGRESS WIDTH	START POINT	END POINT	SIZE	LEVEL
1	1013-101-130	1013-101-130	1013-101-130	1013-101-130	1013-101-130
2	1013-101-160	1013-101-160	1013-101-160	1013-101-160	1013-101-160

NO.	EXGRESS WIDTH	START POINT	END POINT	SIZE	LEVEL
1	1013-101-130	1013-101-130	1013-101-130	1013-101-130	1013-101-130
2	1013-101-160	1013-101-160	1013-101-160	1013-101-160	1013-101-160

NO.	EXGRESS WIDTH	START POINT	END POINT	SIZE	LEVEL
1	1013-101-130	1013-101-130	1013-101-130	1013-101-130	1013-101-130
2	1013-101-160	1013-101-160	1013-101-160	1013-101-160	1013-101-160

Copyright © 2019, K2 Studio, Inc. All Rights Reserved. All Rights Reserved. No part of this document may be reproduced without permission.

Final for Publication



**RECONFIGURED ENTRY / LOBBY**  
 EXISTING ENTRY LOBBY TO BE RECONFIGURED TO ACCOMMODATE PERMITTED PATHS OF EGRESS TO REMAIN - SEE NEW OCCUPANCY SHEETS FOR TRAVEL DISTANCES, EGRESS TIMES, AND REGISTER TO REMAIN DUCTWORK / REGISTERS TO REMAIN AS-IS

**EXIST. PANTRY**  
 EXISTING STORAGE PANTRY TO BE RELOCATED TO ACCOMMODATE LIMITED TO INSTALLATION OF SHELVING + FRUITS OF WALL STORAGE + FRUITS OF WALL FOR WALK-IN COOLER INSTALL.

**RELOCATED WALK-IN COOLER**  
 OWNER PROVIDED WALK-IN COOLER TO BE RELOCATED TO THIS AREA. SEE PLAN ON SHEET P100 AND COOLER DETAILS ON SHEET A210

SEE ENLARGED PLAN OF AREA ON SHEET A110

NOTE: HATCHED AREA NOT IN CONTRACT

NOTE: HATCHED AREA NOT IN CONTRACT

NOTE: HATCHED AREA NOT IN CONTRACT

NEW OVERALL GROUND FL PLAN  
 1/8" = 1'-0"

**K2 STUDIO**  
 319 W. 18TH STREET  
 CHICAGO, IL 60611  
 PH: 312.275.5880  
 E: STUDIO@K2ARCH.COM

**MOODY TONGUE BREWING CO.**  
 2815 S. WABASH CHICAGO, IL

#	DATE	REMARKS
1	01.25.2019	PERMIT SET

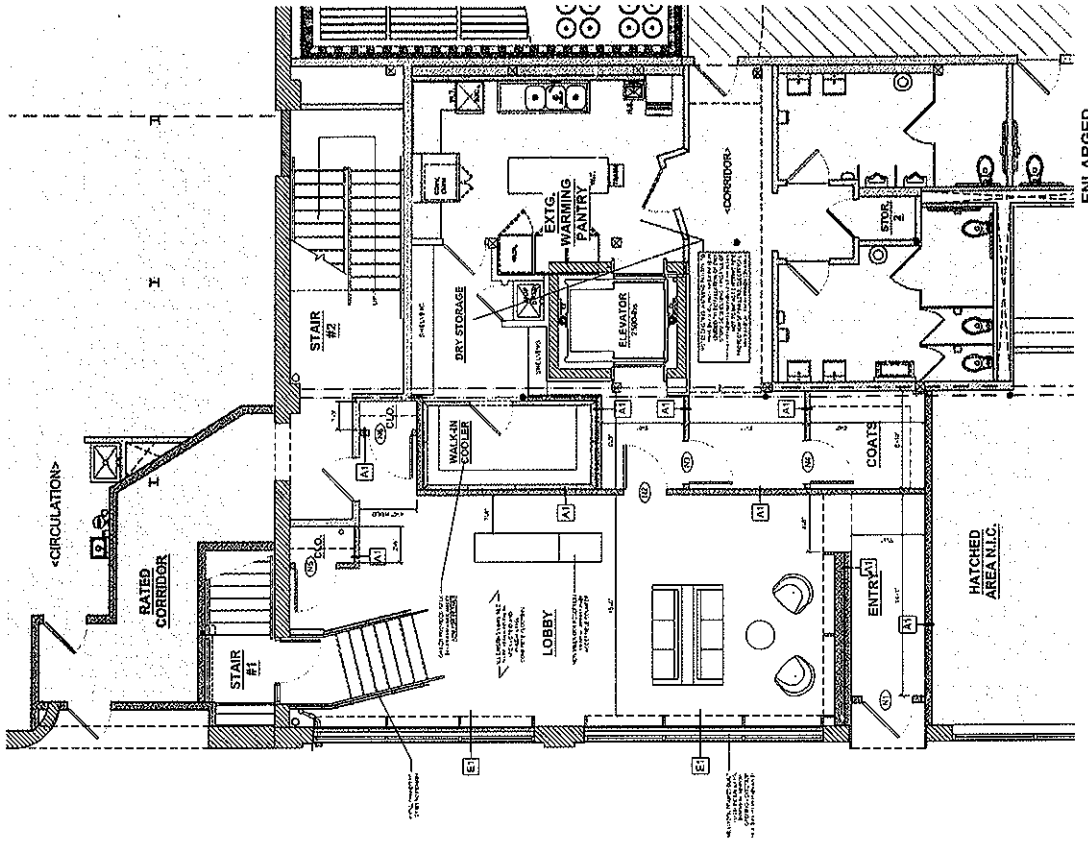
PHILIP KUPRITZ  
 ARCHITECT #042080  
 LICENSE #042080  
 EXP. NOVEMBER 2019

STATE OF ILLINOIS

**A100**  
 SHEET NUMBER

# Final for Publication

NO.	DESCRIPTION	AREA	FLOOR		WALL		CEILING		DOOR	WINDOW	GLASS	PARTITION	TOILET	AREA
			FIN.	CONC.	FIN.	CONC.	FIN.	CONC.						
11	RECEPTION	100	100	100	100	100	100	100	100	100	100	100	100	100
12	ENTRANCE	100	100	100	100	100	100	100	100	100	100	100	100	100
13	LOBBY	100	100	100	100	100	100	100	100	100	100	100	100	100
14	STAIR #1	100	100	100	100	100	100	100	100	100	100	100	100	100
15	STAIR #2	100	100	100	100	100	100	100	100	100	100	100	100	100
16	LOBBY	100	100	100	100	100	100	100	100	100	100	100	100	100
17	LOBBY	100	100	100	100	100	100	100	100	100	100	100	100	100
18	LOBBY	100	100	100	100	100	100	100	100	100	100	100	100	100
19	LOBBY	100	100	100	100	100	100	100	100	100	100	100	100	100
20	LOBBY	100	100	100	100	100	100	100	100	100	100	100	100	100
21	LOBBY	100	100	100	100	100	100	100	100	100	100	100	100	100
22	LOBBY	100	100	100	100	100	100	100	100	100	100	100	100	100
23	LOBBY	100	100	100	100	100	100	100	100	100	100	100	100	100
24	LOBBY	100	100	100	100	100	100	100	100	100	100	100	100	100
25	LOBBY	100	100	100	100	100	100	100	100	100	100	100	100	100
26	LOBBY	100	100	100	100	100	100	100	100	100	100	100	100	100
27	LOBBY	100	100	100	100	100	100	100	100	100	100	100	100	100
28	LOBBY	100	100	100	100	100	100	100	100	100	100	100	100	100
29	LOBBY	100	100	100	100	100	100	100	100	100	100	100	100	100
30	LOBBY	100	100	100	100	100	100	100	100	100	100	100	100	100
31	LOBBY	100	100	100	100	100	100	100	100	100	100	100	100	100
32	LOBBY	100	100	100	100	100	100	100	100	100	100	100	100	100
33	LOBBY	100	100	100	100	100	100	100	100	100	100	100	100	100
34	LOBBY	100	100	100	100	100	100	100	100	100	100	100	100	100
35	LOBBY	100	100	100	100	100	100	100	100	100	100	100	100	100
36	LOBBY	100	100	100	100	100	100	100	100	100	100	100	100	100
37	LOBBY	100	100	100	100	100	100	100	100	100	100	100	100	100
38	LOBBY	100	100	100	100	100	100	100	100	100	100	100	100	100
39	LOBBY	100	100	100	100	100	100	100	100	100	100	100	100	100
40	LOBBY	100	100	100	100	100	100	100	100	100	100	100	100	100
41	LOBBY	100	100	100	100	100	100	100	100	100	100	100	100	100
42	LOBBY	100	100	100	100	100	100	100	100	100	100	100	100	100
43	LOBBY	100	100	100	100	100	100	100	100	100	100	100	100	100
44	LOBBY	100	100	100	100	100	100	100	100	100	100	100	100	100
45	LOBBY	100	100	100	100	100	100	100	100	100	100	100	100	100
46	LOBBY	100	100	100	100	100	100	100	100	100	100	100	100	100
47	LOBBY	100	100	100	100	100	100	100	100	100	100	100	100	100
48	LOBBY	100	100	100	100	100	100	100	100	100	100	100	100	100
49	LOBBY	100	100	100	100	100	100	100	100	100	100	100	100	100
50	LOBBY	100	100	100	100	100	100	100	100	100	100	100	100	100



ENLARGED GROUND FL. PLAN  
SCALE: 1/8" = 1'-0"

**K2 STUDIO**  
325 W. 11th STREET  
CHICAGO, IL 60611  
P: 312.278.6000  
F: 312.278.6000  
E: STUDIO@K2ARCH.COM

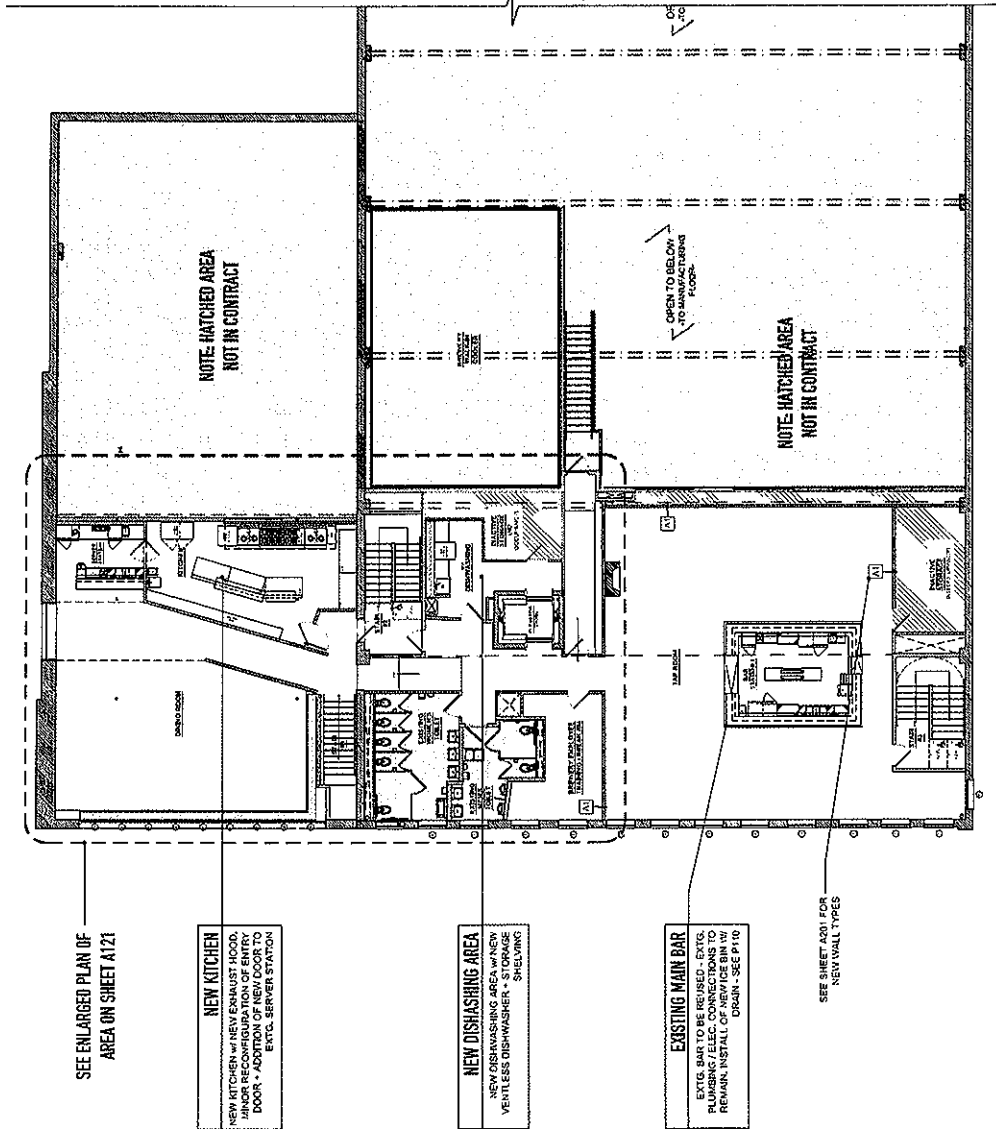
**MOODY TONGUE BREWING CO.**  
2515 S. WABASH CHICAGO, IL  
ARCHITECT: K2 STUDIO

DATE	REMARKS
01.25.2019	PERMIT SET


PHILIP WUPRITZ  
ARCHITECT OF RECORD  
LICENSE NO. 061622  
EXP. NOVEMBER 2019  
STATE OF ILLINOIS

**A110**  
SHEET NUMBER

# Final for Publication



NEW OVERALL SECOND FL. PLAN  
SCALE: 1/4" = 1'-0"


 **K2 STUDIO**  
378 W. 18<sup>TH</sup> STREET  
SUITE 201  
NILES, IL 60067  
P: 708.512.2775  
E: STUDIO@K2ARCH.COM

**PROJECT:**  
**MOODY TONGUE BREWING CO.**  
2518 S. WABASH CHICAGO, IL

© 2018 K2 ARCHITECTURE, INC.

#	DATE	REMARKS
1	01.25.2019	PERMIT SET

PERMIT SET 01.25.2019

	<b>PHILIP KURIPTZ</b> ENGINEER NO. 049590 ILLINOIS REG. NO. 049590
--	--

**A120**  
SHEET NUMBER









**K2 STUDIO**  
 329 W. 18th STREET  
 SUITE 501  
 CHICAGO, IL 60616  
 PH: 312-275-5000  
 E: STUDIO@K2ARCH.COM

PROJECT:  
**MOODY TONGUE BREWING CO.**  
 2515 S. WABASH CHICAGO, IL

OWNER'S CONSULTANTS / ENGINEERS:

Final for publication

OCCUPANCY MATRIX MOODY TONGUE BREWERY				
OCCUPANCY CALCULATION FLOOR: MOODY TONGUE BREWERY - 2509-19 S. WABASH				
OCCUPANCY CLASSIFICATION: INDUSTRIAL UNIT / SMALL ASSEMBLY OCCUPANCY COUNT AS PER 312-65-223				
ROOM / SECTION	AREA - SF	OCCUPANCY	SF PER PERSON	OCCUPANCY
<b>SECOND FLOOR</b>				
KITCHEN	402		100	4
CORING AREA	916		15	61
SERVER STATION	167		100	1
DISHWASHING AREA	103		100	1
CIRCULATION	45	CIRCULATION	NA	-
<b>SECOND FLOOR TOTAL 67 PERSONS</b>				
<b>GROUND FLOOR</b>				
ENTRY VESTIBULE	72	CIRCULATION	NA	-
LOBBY	524	CIRCULATION	NA	-
<b>GROUND FLOOR TOTAL -</b>				

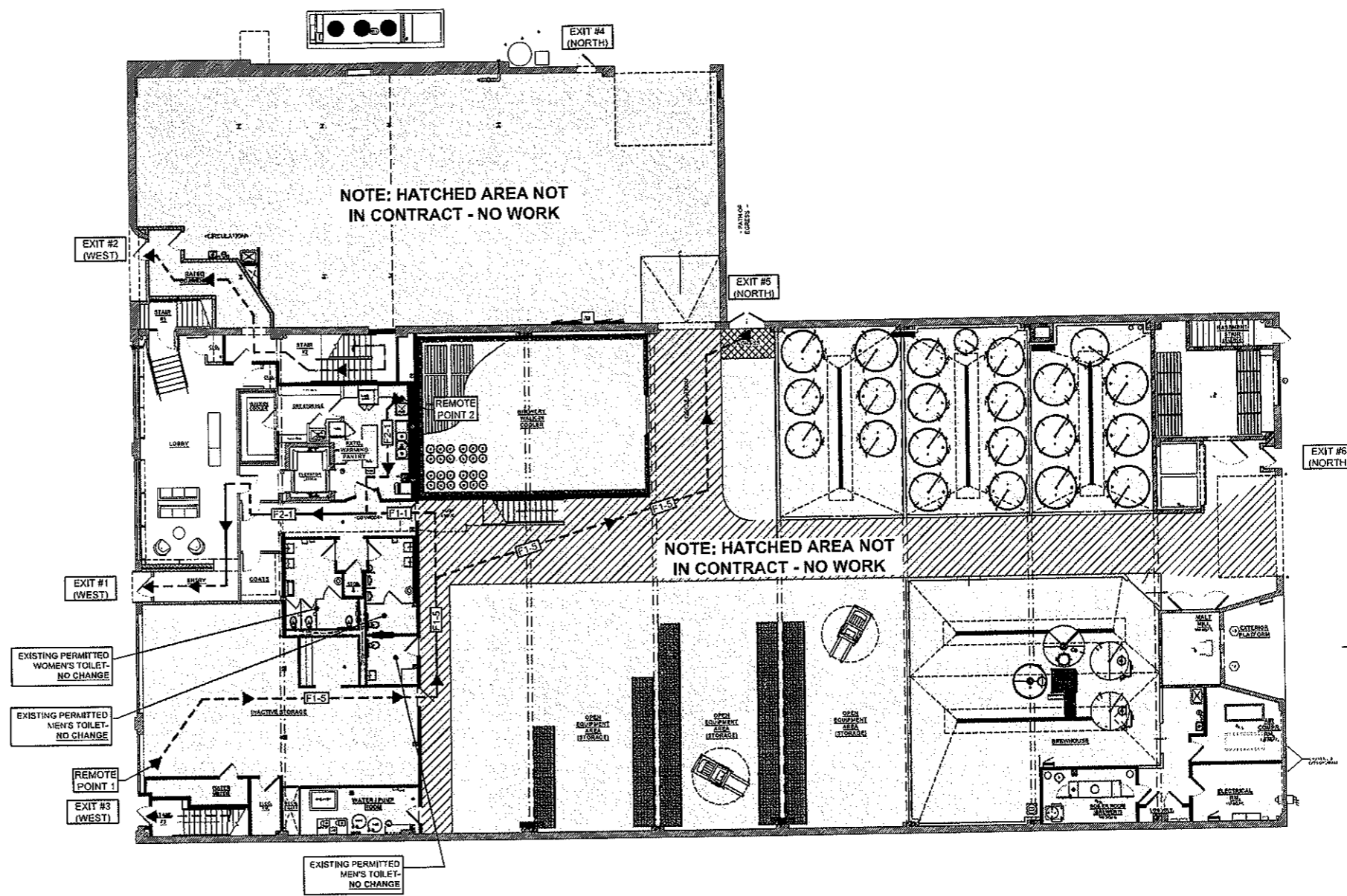
**MEASUREMENT OF TRAVEL DISTANCE: 10(13-160-130)**  
 MEASURED FROM MOST REMOTE POINT IN ANY FLOOR, WHEN FLOOR OF RESIDENTIAL OR BUSINESS UNIT IS SURROUNDED AND CONTAINS THE HATCHED CORRIDOR. TRAVEL DISTANCE IS MEASURED FROM A DOOR LEADING FROM A ROOM/SPACE TO SUCH CORRIDOR OR TRAVEL DISTANCE FROM MOST REMOTE POINT IN FLOOR NOT TO EXCEED 150% OF MINIMUM DISTANCE.

**MAXIMUM DISTANCE FROM END OF CORRIDOR: 10(13-160-160)**  
 MAXIMUM TRAVEL DISTANCE TO EXIT FROM END OF CORRIDOR DOES NOT EXCEED 50% OF TRAVEL DISTANCE PERMITTED OR 50' OF RESIDENTIAL USE LISTED.

TRAVEL DISTANCE	
1 ASSEMBLY USE BASE TRAVEL DISTANCE = 150'-0" AS PER 13-160-130	150'-0" BASE T.D.
2 HAVE PUBLIC CORRIDOR PROVIDED WITH 12" LABEL DOORS WITH DOOR CLOSERS. TRAVEL MEASURED FROM DOOR LEADING FROM A ROOM OR SPACE TO SUCH CORRIDOR. TRAVEL DISTANCE FROM MOST REMOTE POINT IN FLOOR NOT TO EXCEED 150% OF MINIMUM DISTANCE. FROM MOST REMOTE POINT TRAVEL DISTANCE = 150' X 1.5 = 225' TOTAL TRAVEL DIST. FOR BUSINESS USE.	225'-0" MAX W/ BORDS

DESIGNATED TRAVEL DISTANCE						
FLOOR	TAG	TRAVEL DISTANCE ROUTE	REMOTE POINT	EXIT POINT	DISTANCE	NOTE
1ST LEVEL	F1-1	TOTAL TRAVEL DISTANCE OF ROUTE F1-1	REMOTE PT. 1	EXIT #1	152'-8"	REQ'D TRAVEL DISTANCE TO EXIT SATISFIED
	F2-1	TOTAL TRAVEL DISTANCE OF ROUTE F2-1	REMOTE PT. 2	EXIT #1	81'-0"	REQ'D TRAVEL DISTANCE TO EXIT SATISFIED
	F1-5	TOTAL TRAVEL DISTANCE OF ROUTE F1-5	REMOTE PT. 1	EXIT #5	87'-0"	REQ'D TRAVEL DISTANCE TO EXIT SATISFIED
2ND LEVEL	F4-2	TOTAL TRAVEL DISTANCE OF ROUTE F4-2	REMOTE PT. 4	EXIST STAIR #2	72'-0"	REQ'D TRAVEL DISTANCE TO EXIT SATISFIED
	F3-2	TOTAL TRAVEL DISTANCE OF ROUTE F3-2	REMOTE PT. 3	EXIST STAIR #3	44'-3"	REQ'D TRAVEL DISTANCE TO EXIT SATISFIED

**NOTE: TRAVEL DISTANCES FROM ALL REMOTE POINTS IN THE BREWERY SPACE ARE SATISFIED FOR DISTANCE TO FOUR OF TOTAL EXITS LOCATED. ADDITIONAL EXITS PROVIDED WITHIN BUILDING. SEE PLAN FOR ADDITIONAL EXITS PROVIDED BEYOND CODE REQUIREMENTS.**



**GROUND LEVEL OCCUPANCY PLAN**  
 SCALE: 3/32" = 1'-0"  
 0 1 2 3 4 5 FEET  
 3/12" = 1'-0"

EGRESS WIDTH CALCULATIONS - HORIZONTAL - 2ND FLOOR			
CALCULATION FLOOR: MOODY TONGUE BREWERY - 2515 S. WABASH			
REFERENCE	PEOPLE PER EGRESS UNIT	MIN. CODE REQUIRED	ACTUAL PROVISION
1	EGRESS DOOR WIDTH HORIZONTAL EXITS EXIST CONNECTIONS (13-160-130)	237 P/30 = 2.33	(1) EXIT STAIR 1: 36" OPHO. TTL. = 1.5 UNITS (2) EXIT STAIR 2: 36" OPHO. TTL. = 1.5 UNITS
		2.7 EGRESS UNITS TOTAL 2.7 UNITS = 82' MIN. DOOR WIDTH TOTAL REQ'D.	TOTAL: 3.0 UNITS 3.0 ACTUAL UNITS: 127' ACTUAL DOOR WIDTH PROVIDED

EGRESS WIDTH CALCULATIONS - HORIZONTAL - 1ST FLOOR			
CALCULATION FLOOR: MOODY TONGUE BREWERY - 2515 S. WABASH			
REFERENCE	PEOPLE PER EGRESS UNIT	MIN. CODE REQUIRED	ACTUAL PROVISION
1	EGRESS DOOR WIDTH HORIZONTAL EXITS EXIST CONNECTIONS (13-160-130)	173 P/30 = 1.9	(1) EXIT #1 (WEST): 36" OPHO. TTL. = 1.5 UNITS (2) EXIT #2 (WEST): 36" OPHO. TTL. = 1.5 UNITS (3) EXIT #3 (WEST): 36" OPHO. TTL. = 1.5 UNITS (4) EXIT #4 (NORTH): 36" OPHO. TTL. = 1.5 UNITS
		1.9 EGRESS UNITS TOTAL 1.9 UNITS = 47' MIN. DOOR WIDTH TOTAL REQ'D.	TOTAL: 2.5 UNITS 19 ACTUAL UNITS = 107' ACTUAL DOOR WIDTH PROVIDED

CAPACITY OF EXITS: 10(13-160-210)	
(A) STAIRS AND OTHER VERTICAL EXITS AT 60 PERSONS PER UNIT OF EGRESS WIDTH. DOORWAYS / OUTSIDE EXITS, HORIZONTAL EXITS AND EXIT CONNECTIONS AT 20 PERSONS PER UNIT OF EGRESS WIDTH.	
(B) VERTICAL EXITS: TOTAL WIDTH OF VERTICAL EXITS AT ANY POINT SHALL BE BASED ON REQUIREMENTS OF THE FLOOR HAVING THE LARGEST OCCUPANCY COMPLY.	
(C) GRADE FLOOR EXITS: WIDTH OF OUTSIDE EXITS AT GRADE DETERMINED BY REQUIRED WIDTH OF VERTICAL EXITS DISCHARGING ON GRADE FLOOR PLUS THE REQUIRED GRADE FLOOR OCCUPANCY.	

SWING OF DOORS: 10(13-160-250)	
(A) ALL DOORS REQUIRED AS EXITS SWING IN THE DIRECTION OF EGRESS EXCEPT: (1) BUSINESS UNIT DOORS TO CORRIDOR CAN SWING IN IF CAPACITY NOT EXCEEDING 100 PERSONS. (2) DOORS TO CORRIDORS OR OUTSIDE FROM ROOMS HAVING CAPACITY NOT EXCEEDING 50 PERSONS - DOORS WHEN DO NOT PROJECT INTO PUBLIC WAY.	
GENERAL NOTES: - P.P. DOOR SWINGS NOT TO ENCRUSH ON MIN. EGRESS WIDTH OF CORRIDORS WHEN OPEN. - THE MANUAL PUSH OR PULL ON A DOOR IN ROUTE OF TRAVEL SHALL NOT EXCEED 15 LBS. TO OPERATE DOOR. - ALL DOORS IN PATH OF EGRESS MUST BE IN DIRECTION OF EGRESS. - DOORS IN PUBLIC SPACES TO HAVE RAUBLED HARDWARE IF OPEN INTO MECH OR ELECT. RMS.	

EGRESS WIDTH CALCULATIONS - VERTICAL - 2ND FLOOR			
CALCULATION FLOOR: MOODY TONGUE BREWERY - 2515 S. WABASH			
REFERENCE	PEOPLE PER EGRESS UNIT	MIN. CODE REQUIRED	ACTUAL PROVISION
1	STAIRS & OTHER VERTICAL EXITS (13-160-130)	237 P/30 = 2.33	(1) EXIT STAIR 1: 48" OPHO. TTL. = 2 UNITS (2) EXIT STAIR 2: 60" OPHO. TTL. = 2 UNITS
		3.0 EGRESS UNITS TOTAL 3.0 UNITS = 82' MIN. VERT. EXIT WIDTH TOTAL REQ'D.	TOTAL: 4.5 UNITS 4.5 ACTUAL UNITS: 105' ACTUAL DOOR WIDTH PROVIDED

CAPACITY OF EXITS INCREASE	
(A) INCREASE OF ASSEMBLY USE CAPACITY OF EXITS AS PER 200-13-160-130 IN BUILDINGS EQUIPPED WITH AN APPROVED SYSTEM OF AUTOMATIC SPRINKLERS THE CAPACITY OF EXITS AS ESTABLISHED MAY BE INCREASED BY 50%.	EGRESS UNIT

MINIMUM WIDTH OF EXIT: 10(13-160-220)	
(A) ALL DOORS REQUIRED AS EXITS ARE NOT TO BE LESS THAN 36".	
(B) ALL STAIRS AND CORRIDORS REQUIRED AS EXITS ARE NOT LESS THAN 36" WIDE. (1) EXCEPTION IN ALL OCCUPANCIES EXCEPT NURSING HOMES, HOSPITALS AND SHELTERED CARE FACILITIES, STAIRS & CORRIDORS IN BUILDINGS TO A TOTAL OF 50 PERSONS OR LESS ABOVE THE GRADE LEVEL AS DEFINED IN SECTION 213-4-010, SHALL NOT BE LESS THAN 36" WIDE.	

#	DATE	REMARKS

PHILIP KUPRITZ  
 PLUMBING REG. NO. 01-6058  
 ARCHITECT OF RECORD  
 EXP. NOVEMBER 2019



SHEET NUMBER **A011**



**K2 STUDIO**  
 329 W. 18th STREET  
 SUITE 501  
 CHICAGO, IL 60616  
 PH: 312-275-5000  
 E: STUDIO@K2ARCH.COM

PROJECT:  
**MOODY TONGUE BREWING CO.**  
 2515 S. WABASH CHICAGO, IL

OWNERS / CONSULTANTS / ENGINEERS:

Final for Publication

OCCUPANCY MATRIX MOODY TONGUE BREWERY				
OCCUPANCY CALCULATION FLOOR: MOODY TONGUE BREWERY - 2515 S. WABASH				
OCCUPANCY CLASSIFICATION: INDUSTRIAL UNIT / SMALL ASSEMBLY OCCUPANCY COUNT AS PER 312-66-310				
ROOM / SECTION	AREA - SF	OCCUPANCY	SF PER PERSON	OCCUPANCY
SECOND FLOOR				
KITCHEN	102		100	4
DINING AREA	919		15	61
SERVER STATION	167		100	1
DISHWASHING AREA	105		100	1
CIRCULATION	45	CIRCULATION	NA	-
SECOND FLOOR TOTAL 67 PERSONS				
GROUND FLOOR				
ENTRY VESTIBULE	72	CIRCULATION	NA	-
LOBBY	524	CIRCULATION	NA	-
GROUND FLOOR TOTAL -				

MEASUREMENT OF TRAVEL DISTANCE: 10(13-160-130)

MEASURED FROM MOST REMOTE POINT IN ANY FLOOR. WHEN FLOOR OF RESIDENTIAL OR BUSINESS UNIT IS SUBDIVIDED AND CONTAINS 118R RATED CORRIDOR, TRAVEL DISTANCE IS MEASURED FROM A DOOR LEADING FROM A ROOMSPACE TO SUCH CORRIDOR SUCH THAT THE MOST REMOTE POINT IN THE FLOOR EXCEEDS 150% OF MAX DISTANCE REQUIRED BY SECTION 13-160-140 - 150

MAXIMUM DISTANCE FROM END OF CORRIDOR: 10(13-160-160)

MAXIMUM TRAVEL DISTANCE TO EXIT FROM END OF CORRIDOR DOES NOT EXCEED 50% OF TRAVEL DISTANCE PERMITTED ON 50' OF RESIDENTIAL USE LISTED.

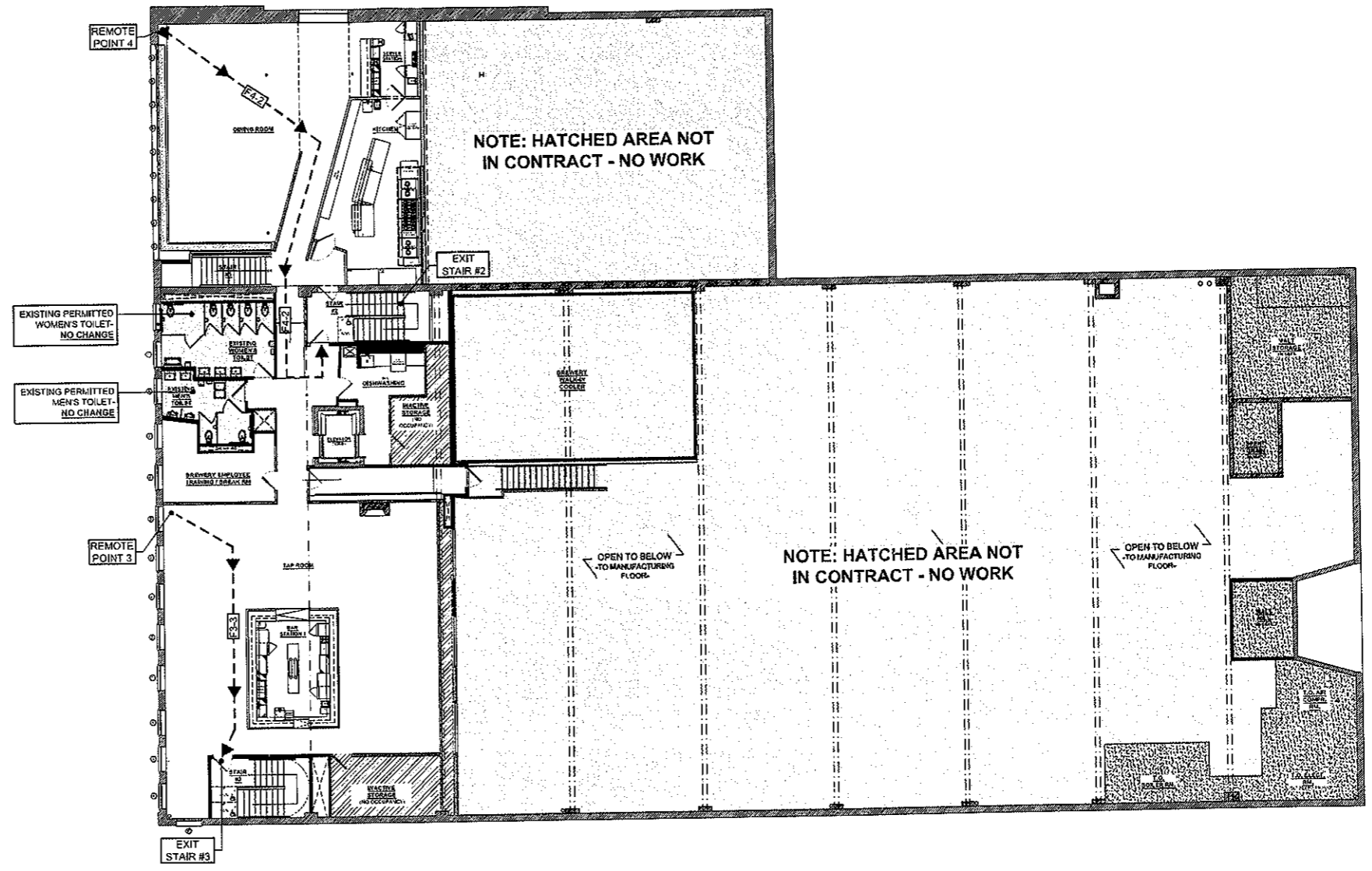
TRAVEL DISTANCE

1 ASSEMBLY / USE BASE TRAVEL DISTANCE = 150'-0" AS PER 6.1.3.1(160-130)	150'-0" BASE T.D.
2 HAVE PUBLIC CORRIDOR PROVIDED WITH "C" LABEL DOORS WITH DOOR CLOSERS. TRAVEL MEASURED FROM DOOR LEADING FROM A ROOM OR SPACE TO SUCH CORRIDOR. TRAVEL DISTANCE FROM MOST REMOTE POINT IN FLOOR NOT TO EXCEED 150% OF MAXIMUM DISTANCE. FROM MOST REMOTE POINT TRAVEL DISTANCE = 150' X 1.5 = 225' TOTAL TRAVEL DIST. FOR BUSINESS USE.	225'-0" MAX W/ BONUS

DESIGNATED TRAVEL DISTANCE

TAG	TRAVEL DISTANCE ROUTE	REMOTE POINT	EXIT POINT	DISTANCE	NOTE
1ST LEVEL					
F1-1	TOTAL TRAVEL DISTANCE OF ROUTE F1-1	REMOTE PT. 1	EXIT #1	132'-8"	REQ'D TRAVEL DISTANCE TO EXIT SATISFIED
F2-1	TOTAL TRAVEL DISTANCE OF ROUTE F2-1	REMOTE PT. 2	EXIT #1	81'-4"	REQ'D TRAVEL DISTANCE TO EXIT SATISFIED
F1-3	TOTAL TRAVEL DISTANCE OF ROUTE F1-3	REMOTE PT. 1	EXIT #3	87'-0"	REQ'D TRAVEL DISTANCE TO EXIT SATISFIED
2ND LEVEL					
F2-2	TOTAL TRAVEL DISTANCE OF ROUTE F2-2	REMOTE PT. 4	EXIST STAIR #2	79'-3"	REQ'D TRAVEL DISTANCE TO EXIT SATISFIED
F3-1	TOTAL TRAVEL DISTANCE OF ROUTE F3-1	REMOTE PT. 3	EXIST STAIR #3	41'-4"	REQ'D TRAVEL DISTANCE TO EXIT SATISFIED

NOTE: TRAVEL DISTANCES FROM ALL REMOTE POINTS IN THE BREWERY SPACE ARE SATISFIED FOR DISTANCE TO FOUR OF TOTAL EXITS LOCATED. ADDITIONAL EXITS PROVIDED WITHIN BUILDING. SEE PLAN FOR ADDITIONAL EXITS PROVIDED BEYOND CODE REQUIREMENTS.



**SECOND LEVEL OCCUPANCY PLAN**  
 SCALE: 3/32" = 1'-0"  
 1/8" = 1'-0"

EGRESS WIDTH CALCULATIONS - HORIZONTAL - 2ND FLOOR			
CALCULATION FLOOR: MOODY TONGUE BREWERY - 2515 S. WABASH			
REFERENCE	PEOPLE PER EGRESS UNIT	MIN. CODE REQUIRED	ACTUAL PROVISION
EGRESS DOOR WIDTH	50 PERSONS BASE	237 P / 50 = 4.74	(1) EXIT STAIR #1: 30' OPHG. TTL. = 1.5 UNITS (2) EXIT STAIR #2: 30' OPHG. TTL. = 1.5 UNITS
HORIZONTAL EXITS			
EXIT CONNECTIONS			
13-84-1906(a)(2)		2.7 EGRESS UNITS TOTAL	2.7 UNITS = 87' MIN. DOOR WIDTH TOTAL REQ'D.
			TOTAL: 3.0 UNITS
			3.0 ACTUAL UNITS = 100' ACTUAL DOOR WIDTH PROVIDED

EGRESS WIDTH CALCULATIONS - HORIZONTAL - 1ST FLOOR			
CALCULATION FLOOR: MOODY TONGUE BREWERY - 2515 S. WABASH			
REFERENCE	PEOPLE PER EGRESS UNIT	MIN. CODE REQUIRED	ACTUAL PROVISION
EGRESS DOOR WIDTH	50 PERSONS BASE	173 P / 50 = 3.46	(1) EXIT #1 (WEST): 30' OPHG. TTL. = 1.5 UNITS (2) EXIT #2 (WEST): 30' OPHG. TTL. = 1.5 UNITS (3) EXIT #3 (WEST): 30' OPHG. TTL. = 1.5 UNITS (4) EXIT #4 (WEST): 30' OPHG. TTL. = 1.5 UNITS
HORIZONTAL EXITS			
EXIT CONNECTIONS			
13-84-1906(a)(2)		1.3 EGRESS UNITS TOTAL	1.3 UNITS = 42' MIN. DOOR WIDTH TOTAL REQ'D.
			TOTAL: 7.5 UNITS
			10 ACTUAL UNITS = 100' ACTUAL DOOR WIDTH PROVIDED

CAPACITY OF EXITS: 10(13-160-210)	
(A) STAIRS AND OTHER VERTICAL EXITS AT 90 PERSONS PER UNIT OF EGRESS WIDTH DOORWAYS, OUTSIDE EXITS, HORIZONTAL EXITS AND EXIT CONNECTIONS BY 25 PERSONS PER UNIT OF EGRESS WIDTH.	
(B) VERTICAL EXITS: TOTAL WIDTH OF VERTICAL EXITS AT ANY POINT SHALL BE BASED ON REQUIREMENTS OF THE FLOOR HAVING THE LARGEST OCCUPANCY.	
(C) GRADE FLOOR EXITS: WIDTH OF OUTSIDE EXITS AT GRADE DETERMINED BY REQUIRED WIDTH OF VERTICAL EXITS DISCHARGING ON GRADE FLOOR PLUS THE REQUIRED GRADE FLOOR OCCUPANCY.	
GENERAL NOTES:	
- TYP. DOOR SWINGS NOT TO ENCRUSH ON MIN. EGRESS WIDTH OF CORRIDORS WHEN OPEN.	
- THE MANUAL PUSH OR PULL ON A DOOR IN ROUTE OF TRAVEL SHALL NOT EXCEED 10 LBS. TO OPERATE DOOR.	
- ALL DOORS IN PATH OF EGRESS KEYLESS IN DIRECTION OF EGRESS.	
- DOORS IN PUBLIC SPACES TO HAVE KNURLED HANDWARE IF OPHG. INTO MECH OR ELEC. RMS.	

SWING OF DOORS: 10(13-160-250)	
ALL DOORS REQUIRED AS EXITS SWING IN THE DIRECTION OF EGRESS EXCEPT:	
(A) BUSINESS UNIT DOORS TO CORRIDOR CAN SWING IN IF CAPACITY NOT EXCEEDING 100 PERSONS.	
(B) DOORS TO CORRIDORS OR OUTSIDE FROM ROOMS HAVING CAPACITY NOT EXCEEDING 99 PERSONS - DOORS WHEN DO NOT PROJECT INTO PUBLIC WAY.	

EGRESS WIDTH CALCULATIONS - VERTICAL - 2ND FLOOR			
CALCULATION FLOOR: MOODY TONGUE BREWERY - 2515 S. WABASH			
REFERENCE	PEOPLE PER EGRESS UNIT	MIN. CODE REQUIRED	ACTUAL PROVISION
STAIRS & OTHER VERTICAL EXITS	60 PERSONS BASE	237 P / 60 = 3.95	(1) EXIT STAIR #1: 45' OPHG. TTL. = 2 UNITS (2) EXIT STAIR #2: 60' OPHG. TTL. = 2 UNITS
13-84-1906(a)(1)		4.0 EGRESS UNITS TOTAL	4.0 UNITS = 80' MIN. VERT. EXIT WIDTH TOTAL REQ'D.
			TOTAL: 5.5 UNITS
			4.5 ACTUAL UNITS = 100' ACTUAL DOOR WIDTH PROVIDED

CAPACITY OF EXITS INCREASE	
1 INCREASE OF "ASSEMBLY USE" CAPACITY OF EXITS AS PER CBC 13-160-210(c)	EGRESS UNIT
IN BUILDINGS EQUIPPED WITH AN APPROVED SYSTEM OF AUTOMATIC SPRINKLERS, THE CAPACITY OF EXITS AS ESTABLISHED MAY BE INCREASED BY 50%.	

#	DATE	REMARKS
1	01.25.2019	PERMIT SET

PHILLIP KUPRITZ  
 ILLINOIS REG. NO. 01-04508  
 ARCHITECT OF RECORD  
 EXP. NOVEMBER 2019

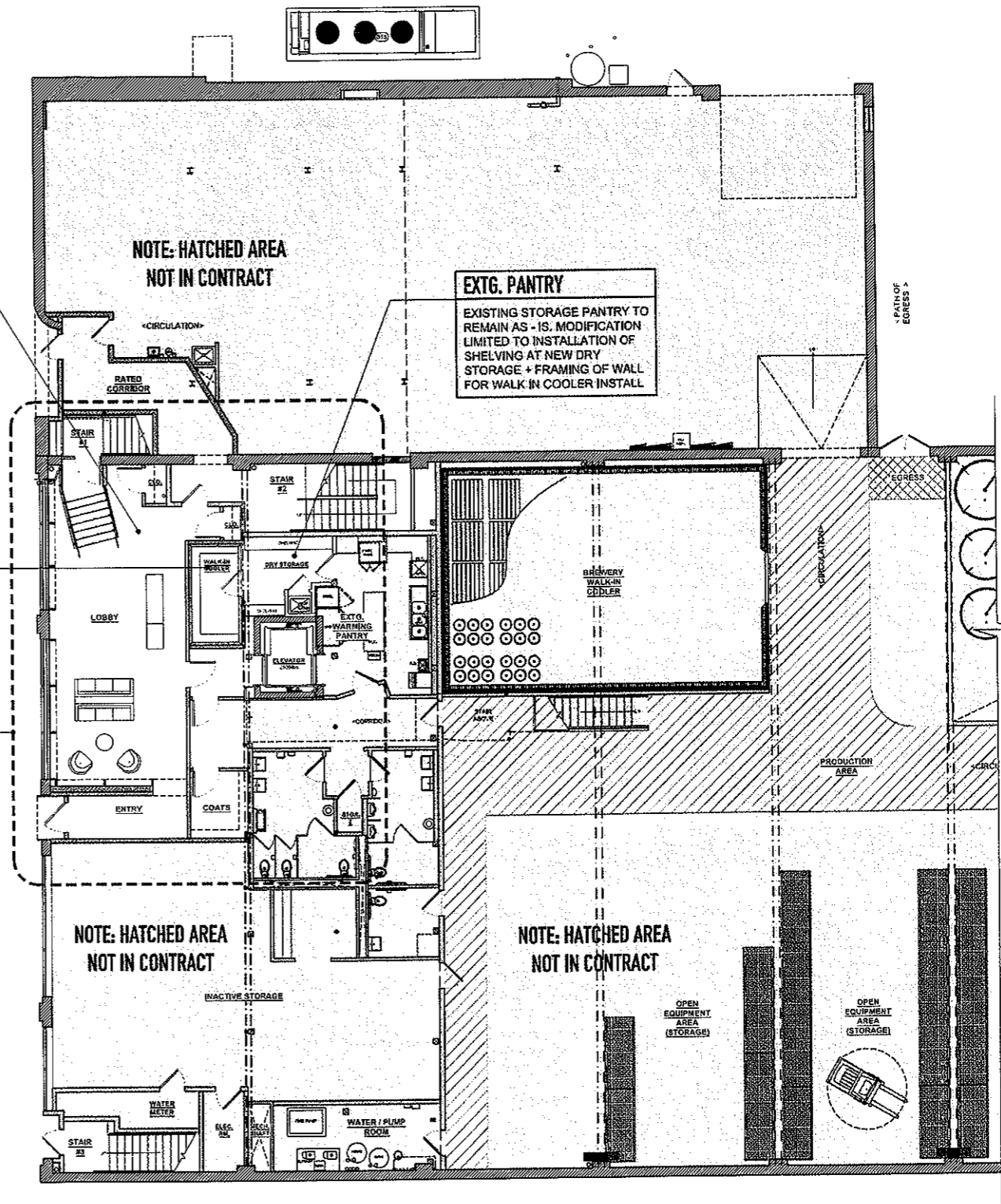
PHILLIP A. KUPRITZ  
 ARCHITECT  
 No. 01-6058  
 STATE OF ILLINOIS

SHEET NUMBER **A012**

**RECONFIGURED ENTRY / LOBBY**  
 EXISTING ENTRY LOBBY TO BE RECONFIGURED. EXISTING (PERMITTED) PATHS OF EGRESSES TO REMAIN - SEE NEW OCCUPANCY SHEETS FOR TRAVEL DISTANCES. EXTG. PERMITTED MECHANICAL DUCTWORK / REGISTERS TO REMAIN AS-IS

**RELOCATED WALK-IN COOLER**  
 OWNER PROVIDED WALK-IN COOLER TO BE INSTALLED. SEE PLUMBING PLAN ON SHEET P100 AND COOLER DETAILS ON SHEET A210

SEE ENLARGED PLAN OF AREA ON SHEET A110



**NOTE: HATCHED AREA NOT IN CONTRACT**

**EXTG. PANTRY**  
 EXISTING STORAGE PANTRY TO REMAIN AS - IS. MODIFICATION LIMITED TO INSTALLATION OF SHELVING AT NEW DRY STORAGE + FRAMING OF WALL FOR WALK IN COOLER INSTALL

**NOTE: HATCHED AREA NOT IN CONTRACT**

**NOTE: HATCHED AREA NOT IN CONTRACT**

**NEW OVERALL GROUND FL PLAN**  
 SCALE: 1/8" = 1'-0"

**K2 STUDIO**  
 329 W. 18th STREET  
 SUITE 501  
 CHICAGO, IL 60616  
 PH: 312-275-5000  
 E: STUDIO@K2ARCH.COM

PROJECT:  
**MOODY TONGUE BREWING CO.**  
 2515 S. WABASH CHICAGO, IL

OWNERS / CONSULTANTS / ENGINEERS:  
 -

01.25.2019		
#	DATE	REMARKS
1	01.25.2019	PERMIT SET

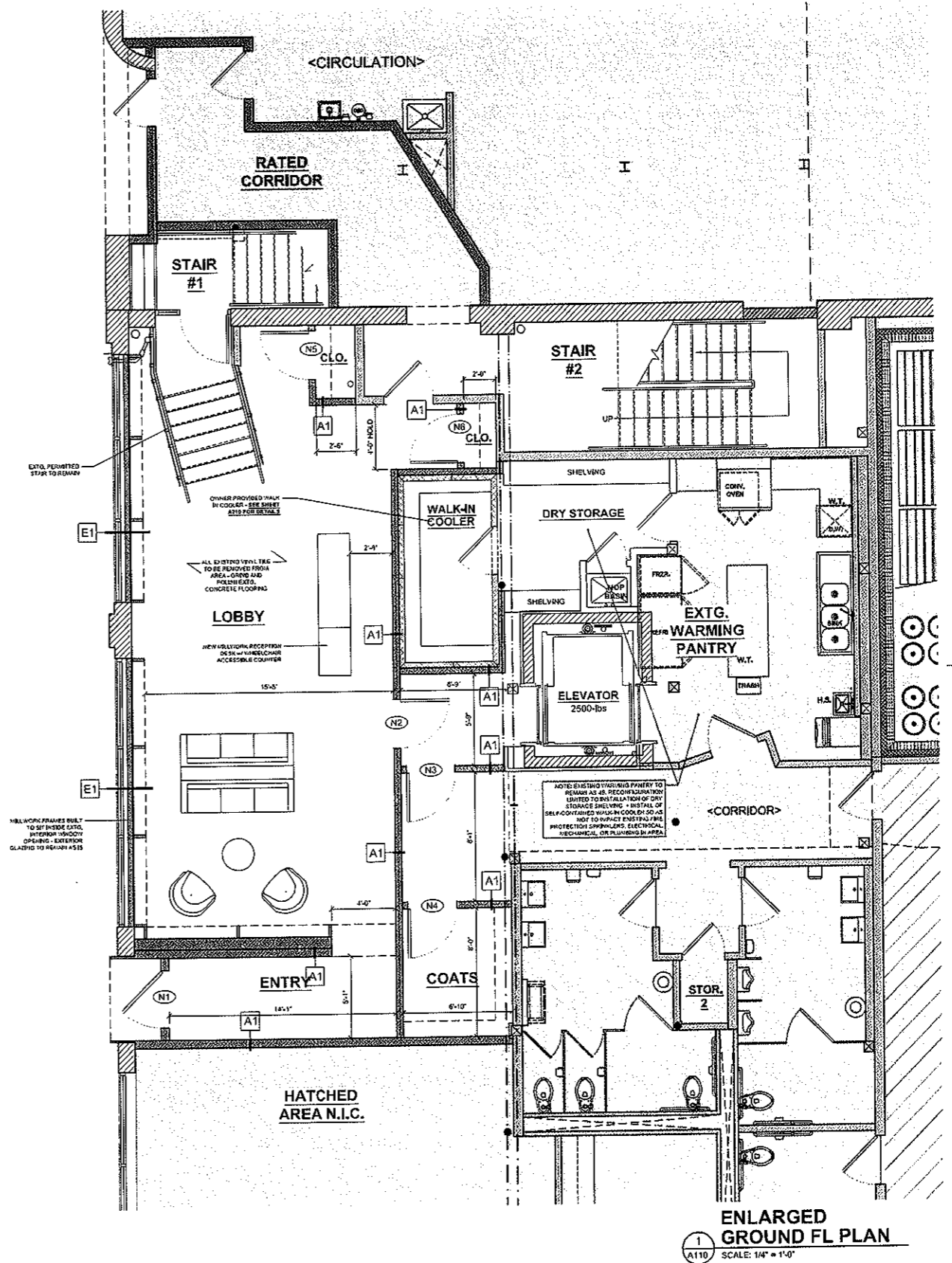
PHILLIP KUPRITZ  
 ILLINOIS REG. NO. 01-6058  
 ARCHITECT OF RECORD  
 EXP. NOVEMBER 2019

PHILLIP A. KUPRITZ  
 REGISTERED  
 No. 01-6058  
 STATE OF ILLINOIS  
 ARCHITECT

**SHEET NUMBER A100**

Material Publication

DOOR SCHEDULE																
TAG	DESCRIPTION	NEW OR EXISTING	TYPE	MATL	WIDTH	HEIGHT	THICK	FIN	MATL	FIN	CLOSER	RATING	LABEL	PANIC HDWR, PUSH BHR	LOCKSET	NOTES
N1	EXTERIOR DR.	NEW	A	MTL	3'-0"	7'-0"	1-3/4"	PTD.	MTL	PTD.	YES	90 MIN.	B - LABEL	YES	A	
N2	INTERIOR DR.	NEW	B	WD.	3'-0"	7'-0"	1-3/4"	PTD.	MTL	PTD.	YES	180 MIN.	A - LABEL	YES	C	RATED CIRCULATION DOORS
N3	INTERIOR DR.	NEW	B	MTL	3'-0"	7'-0"	1-3/4"	PTD.	MTL	PTD.	YES	180 MIN.	A - LABEL	YES	C	RATED CIRCULATION DOORS
N4	INTERIOR DR.	NEW	C	WD.	3'-0"	7'-0"	1-3/4"	PTD.	MTL	PTD.	-	-	-	-	-	RATED CIRCULATION DOORS
N5	INTERIOR DR.	NEW	C	WD.	3'-0"	7'-0"	1-3/4"	PTD.	MTL	PTD.	-	-	-	-	-	RATED CIRCULATION DOORS
N6	INTERIOR DR.	NEW	C	MTL	3'-0"	7'-0"	1-3/4"	PTD.	MTL	PTD.	-	-	-	-	-	RATED CIRCULATION DOORS
SECOND FLOOR																
N7	KITCHEN TRAFFIC DOOR	NEW	E	MTL	3'-0"	7'-0"	1-3/4"	MTL	MTL	PTD.	-	-	-	-	-	STAINLESS STEEL 'GRANGER SUPPLY' RESTAURANT TRAFFIC DOOR
N8	KITCHEN TRAFFIC DOOR	NEW	E	MTL	3'-0"	7'-0"	1-3/4"	MTL	MTL	PTD.	-	-	-	-	-	STAINLESS STEEL 'GRANGER SUPPLY' RESTAURANT TRAFFIC DOOR
N9	INTERIOR DR.	NEW	C	MTL	3'-0"	7'-0"	1-3/4"	PTD.	MTL	PTD.	-	-	-	-	-	
N10	INTERIOR DR.	NEW	C	MTL	3'-0"	7'-0"	1-3/4"	PTD.	MTL	PTD.	-	-	-	-	-	
N11	INTERIOR DR.	NEW	C	MTL	3'-0"	7'-0"	1-3/4"	PTD.	MTL	PTD.	-	-	-	-	-	
N12	INTERIOR DR.	NEW	C	MTL	3'-0"	7'-0"	1-3/4"	PTD.	MTL	PTD.	-	-	-	-	-	



ENLARGED GROUND FL PLAN  
SCALE: 1/4" = 1'-0"

**K2 STUDIO**  
 329 W. 18th STREET  
 SUITE 501  
 CHICAGO, IL 60616  
 PH: 312-275-5000  
 E: STUDIO@K2ARCH.COM

**MOODY TONGUE BREWING CO.**  
 2515 S. WABASH CHICAGO, IL

OWNERS / CONSULTANTS / ENGINEERS

#	DATE	REMARKS
1	01.25.2019	PERMIT SET

PHILLIP KUPRITZ  
 ILLINOIS REG. NO. 01-6058  
 ARCHITECT OF RECORD  
 EXP. NOVEMBER 2019

PHILLIP A. KUPRITZ  
 REGISTERED ARCHITECT  
 No. 01-6058  
 STATE OF ILLINOIS  
 ARCHITECT

SHEET NUMBER **A110**

Final for Publication

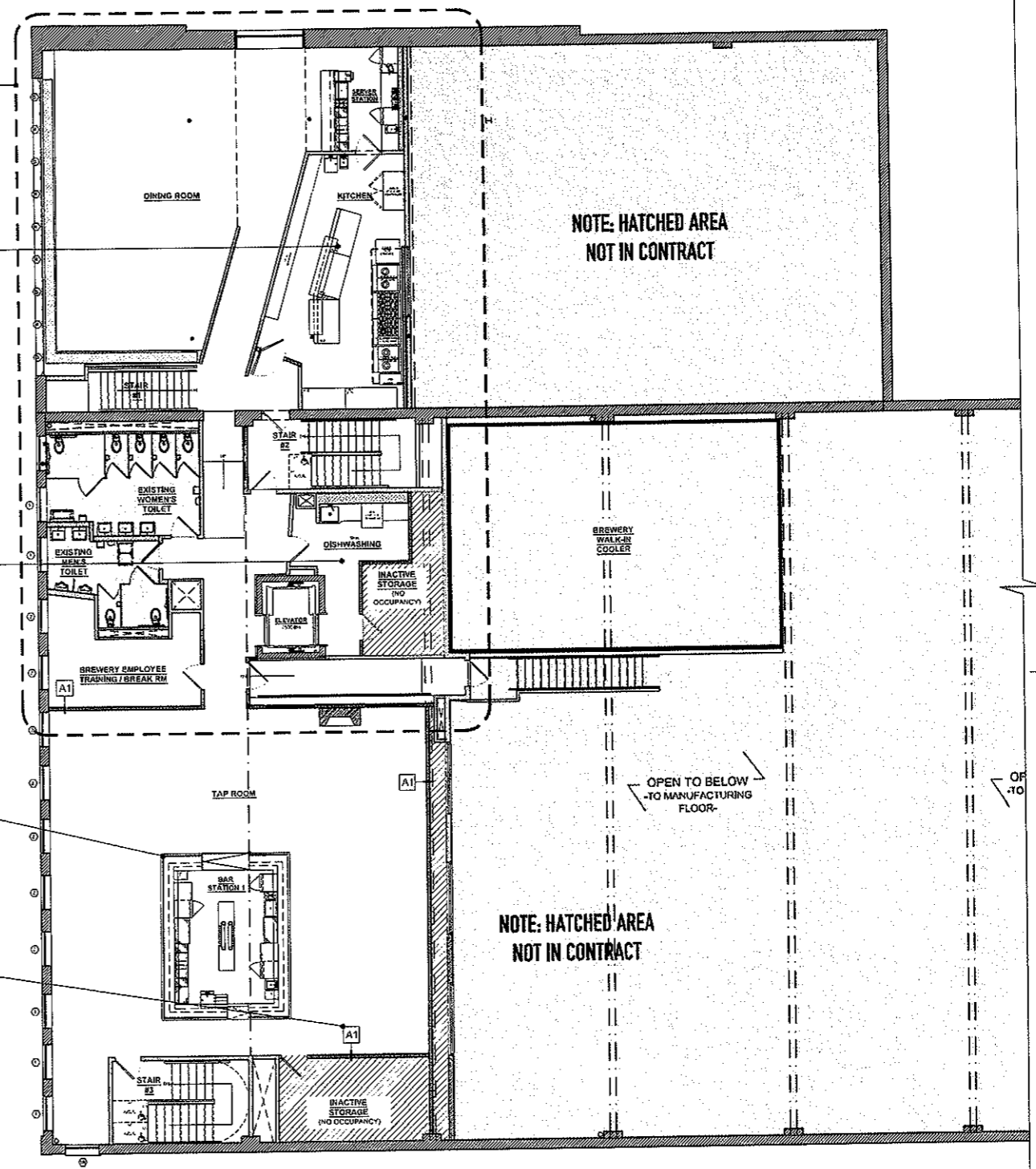
SEE ENLARGED PLAN OF AREA ON SHEET A121

**NEW KITCHEN**  
NEW KITCHEN w/ NEW EXHAUST HOOD. MINOR RECONFIGURATION OF ENTRY DOOR + ADDITION OF NEW DOOR TO EXTG. SERVER STATION

**NEW DISHWASHING AREA**  
NEW DISHWASHING AREA w/ NEW VENTLESS DISHWASHER + STORAGE SHELVING

**EXISTING MAIN BAR**  
EXTG. BAR TO BE REUSED - EXTG. PLUMBING / ELEC. CONNECTIONS TO REMAIN. INSTALL OF NEW ICE BIN w/ DRAIN - SEE P110

SEE SHEET A201 FOR NEW WALL TYPES



**NEW OVERALL SECOND FL PLAN**  
SCALE: 1/8" = 1'-0"



**K2 STUDIO**  
329 W. 18th STREET  
SUITE 501  
CHICAGO, IL 60616  
PH: 312-275-5000  
E: STUDIO@K2ARCH.COM

**MOODY TONGUE BREWING CO.**  
2515 S. WABASH CHICAGO, IL

OWNERS / CONSULTANTS / ENGINEERS:

#	DATE	REMARKS
1	01.25.2019	PERMIT SET

PERMIT SET 01.25.2019

PHILLIP KUPRITZ  
ILLINOIS REG. NO. 01-6058  
ARCHITECT OF RECORD  
EXP. NOVEMBER 2019



SHEET NUMBER **A120**

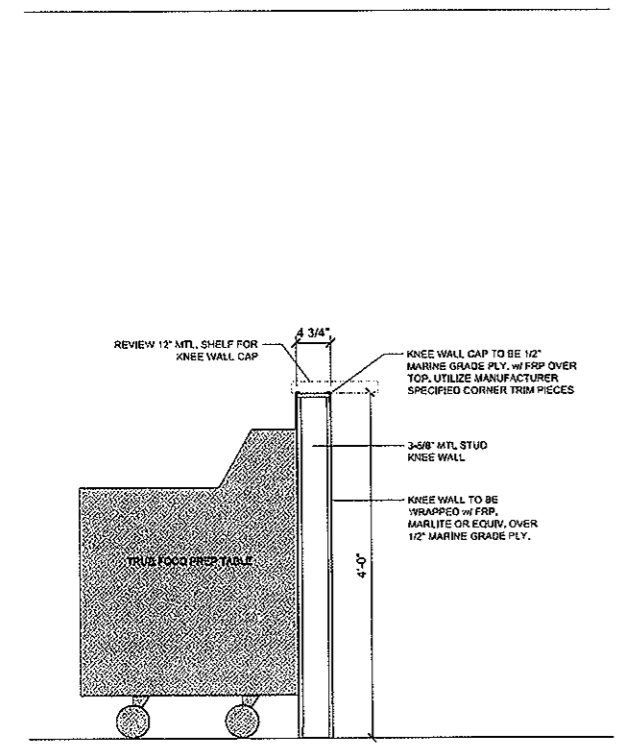
Final for Publication



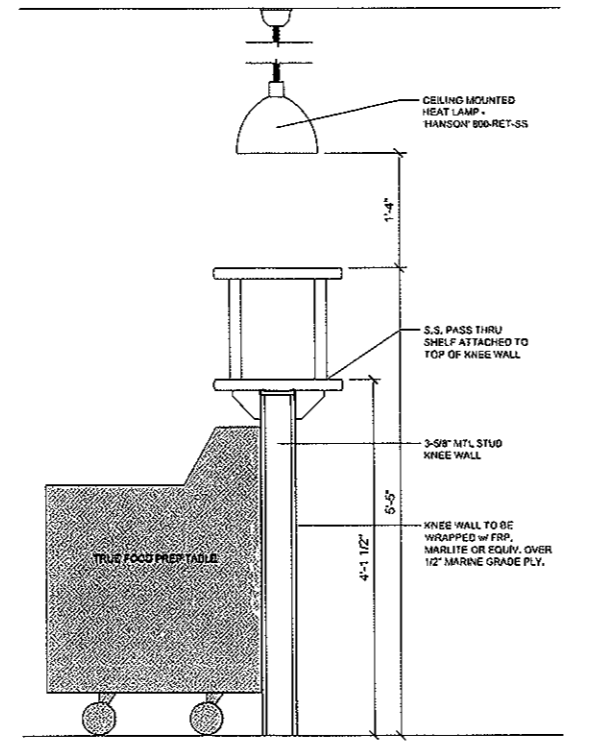
**K2 STUDIO**  
329 W. 18th STREET  
SUITE 501  
CHICAGO, IL 60616  
PH: 312-275-5000  
E: STUDIO@K2ARCH.COM

**PROJECT:**  
**MOODY TONGUE BREWING CO.**  
2515 S. WABASH CHICAGO, IL

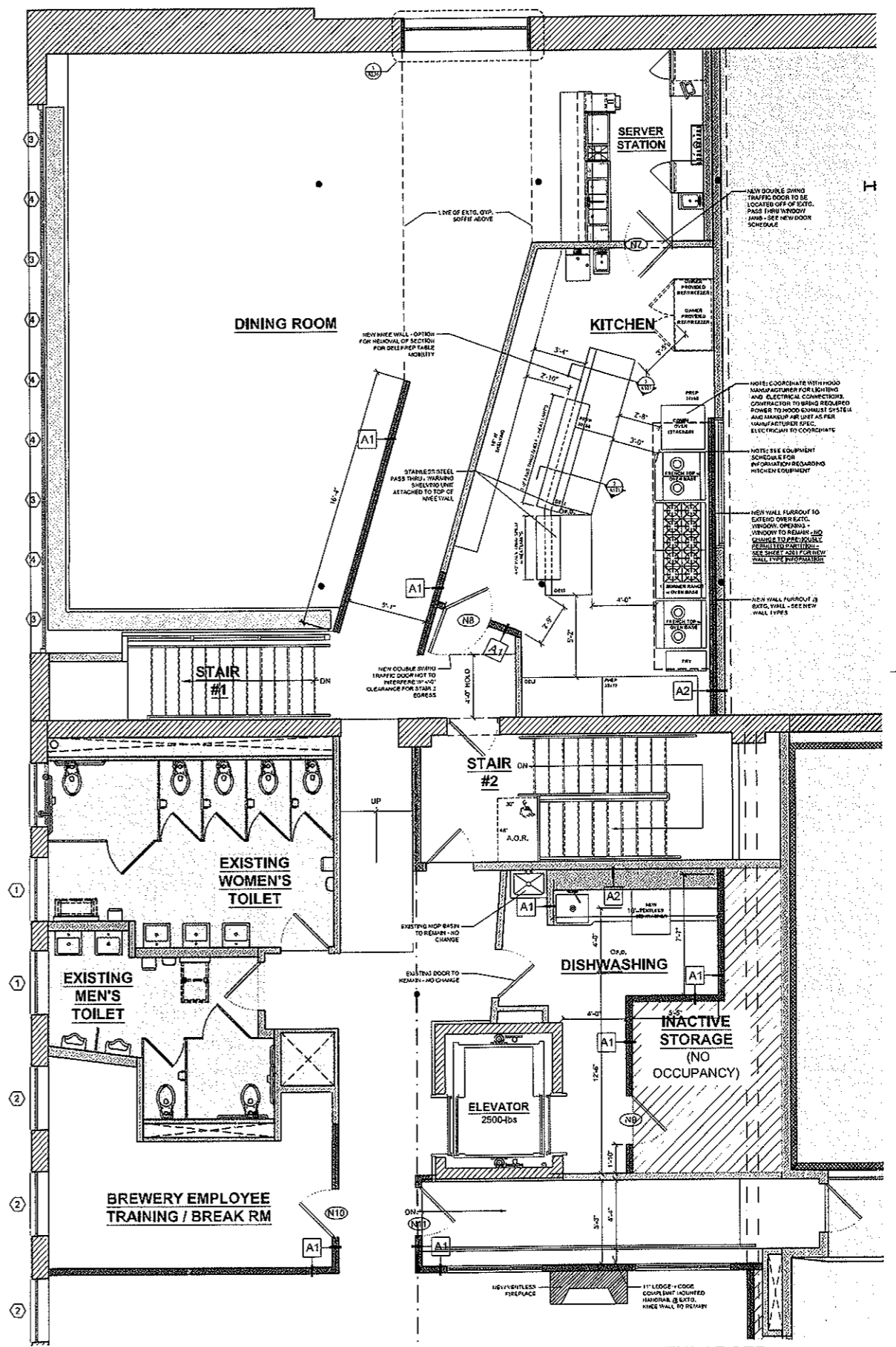
**OWNERS / CONSULTANTS / ENGINEERS:**



**SECTION @ KITCHEN KNEE WALL**  
SCALE: 1" = 1'-0"



**SECTION @ KITCHEN KNEE WALL / PASS THRU**  
SCALE: 1" = 1'-0"



**ENLARGED SECOND FL PLAN**  
SCALE: 1/4" = 1'-0"

DOOR SCHEDULE																
TAG	DESCRIPTION	NEW OR EXISTING	TYPE	MATL	WIDTH	HEIGHT	THICK	FIN	MATL	FIN	CLOSER	RATING	LABEL	PANIC HORIZ. PUSH BAR	LOCKSET	NOTES
N1	EXTERIOR DR.	NEW	A	MTL	3'-0"	7'-0"	1-3/4"	PTD.	MTL	PTD.	YES	90 MIN.	B-LABEL	YES	A	
N2	INTERIOR DR.	NEW	B	WD.	3'-0"	7'-0"	1-3/4"	PTD.	MTL	PTD.	YES	180 MIN.	A-LABEL	YES	C	RATED CIRCULATION DOORS
N3	INTERIOR DR.	NEW	B	MTL	3'-0"	7'-0"	1-3/4"	PTD.	MTL	PTD.	YES	180 MIN.	A-LABEL	YES	C	RATED CIRCULATION DOORS
N4	INTERIOR DR.	NEW	C	WD.	3'-0"	7'-0"	1-3/4"	PTD.	MTL	PTD.	-	-	-	-	-	RATED CIRCULATION DOORS
N5	INTERIOR DR.	NEW	C	WD.	3'-0"	7'-0"	1-3/4"	PTD.	MTL	PTD.	-	-	-	-	-	RATED CIRCULATION DOORS
N8	INTERIOR DR.	NEW	C	MTL	3'-0"	7'-0"	1-3/4"	PTD.	MTL	PTD.	-	-	-	-	-	RATED CIRCULATION DOORS
SECOND FLOOR																
N7	KITCHEN TRAFFIC DOOR	NEW	E	MTL	3'-0"	7'-0"	1-3/4"	MTL	MTL	PTD.	-	-	-	-	-	STAINLESS STEEL 'GRANDER SUPPLY' RESTAURANT TRAFFIC DOOR
N8	KITCHEN TRAFFIC DOOR	NEW	E	MTL	3'-0"	7'-0"	1-3/4"	MTL	MTL	PTD.	-	-	-	-	-	STAINLESS STEEL 'GRANDER SUPPLY' RESTAURANT TRAFFIC DOOR
N9	INTERIOR DR.	NEW	C	MTL	3'-0"	7'-0"	1-3/4"	PTD.	MTL	PTD.	-	-	-	-	-	
N10	INTERIOR DR.	NEW	C	MTL	3'-0"	7'-0"	1-3/4"	PTD.	MTL	PTD.	-	-	-	-	-	
N11	INTERIOR DR.	NEW	C	MTL	3'-0"	7'-0"	1-3/4"	PTD.	MTL	PTD.	-	-	-	-	-	
N12	INTERIOR DR.	NEW	C	MTL	3'-0"	7'-0"	1-3/4"	PTD.	MTL	PTD.	-	-	-	-	-	

01.25.2019

#	DATE	REMARKS
1	01.25.2019	PERMIT SET

**PERMIT SET**

PHILLIP KUPRITZ  
ILLINOIS REG. NO. 01-6058  
ARCHITECT OF RECORD  
EXP. NOVEMBER 2019

PHILLIP A. KUPRITZ  
REGISTERED  
No. 01-6058  
STATE OF ILLINOIS  
ARCHITECT

**SHEET NUMBER**  
**A121**