



Office of Chicago City Clerk



O2011-5227

Office of the City Clerk

City Council Document Tracking Sheet

Meeting Date:	6/8/2011
Sponsor(s):	Reilly, Brendan (42)
Type:	Ordinance
Title:	Grant(s) of Privilege in Public Way for Peninsula Chicago, LLC
Committee(s) Assignment:	Committee on Transportation and Public Way

ORDINANCE
PENINSULA CHICAGO,LLC
AccL No. 206313 - 1
Permit No. 1096381

Be It Ordained by the City Council of the City of Chicago:

SECTION 1. Permission and authority are hereby given and granted to PENINSULA CHICAGO,LLC, upon the terms and subject to the conditions of this ordinance to maintain and use, as now constructed, one (1) Cornicé(s) projecting over the public right-of-way adjacent to its premises known as 108 E. Superior St..

Said Cornice(s) at E. Superior St. measure(s):

One (1) at eight hundred ninety-eight (898) feet in length, and one (1) foot in width for a total of eight hundred ninety-eight (898) square feet.

The location of said privilege shall be as shown on prints kept on file with the Department of Business Affairs and Consumer Protection and the Office of the City Clerk.

Said privilege shall be constructed in accordance with plans and specifications approved by the Department of Transportation (Division of Project Development).

This grant of privilege in the public way shall be subject to the provisions of Section 10-28-015 and all other required provisions of the Municipal Code of Chicago.

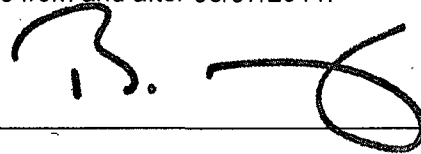
The grantee shall pay to the City of Chicago as compensation for the privilege #1096381 herein granted the sum of seven hundred sixty-two (\$762.00) per annum in advance.

A 25% penalty will be added for payments received after due date.

The permit holder agrees to hold the City of Chicago harmless for any damage, relocation or replacement costs associated with damage, relocation or removal of private property caused by the City performing work in the public way.

Authority herein given and granted for a period of five (5) years from and after 03/07/2011.

Alderman _____

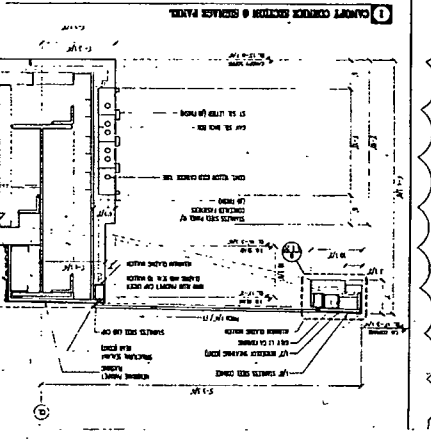
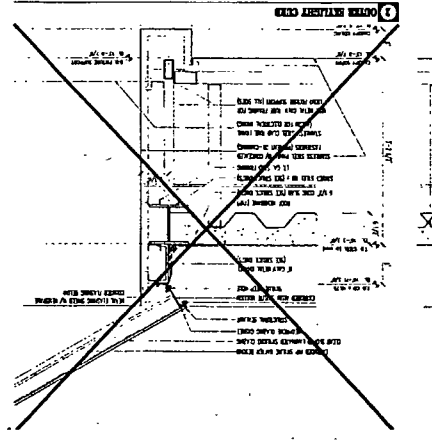
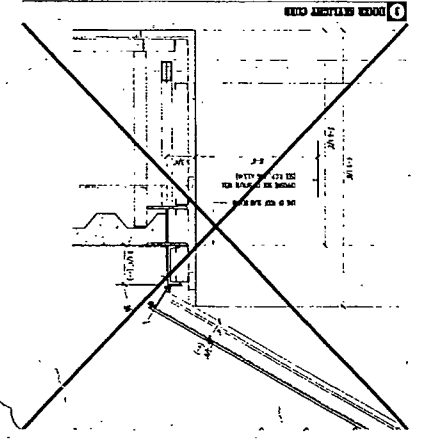
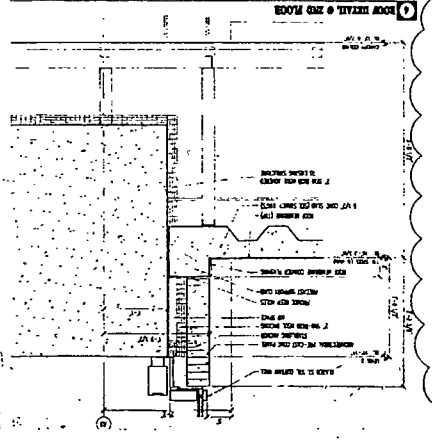
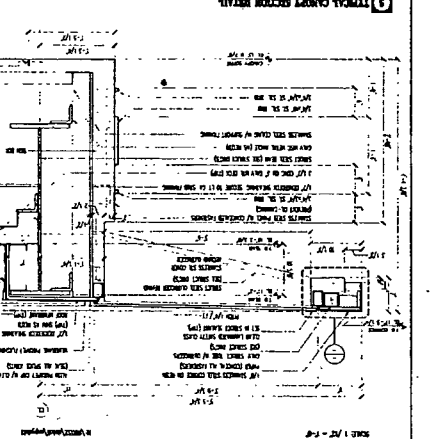
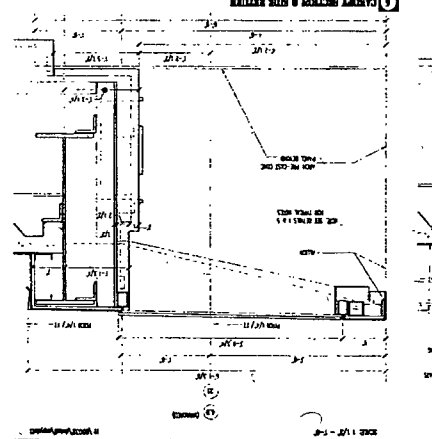
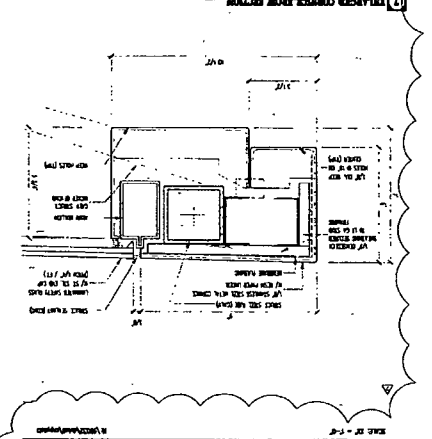
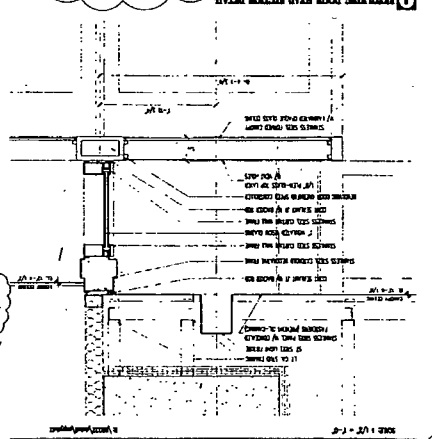
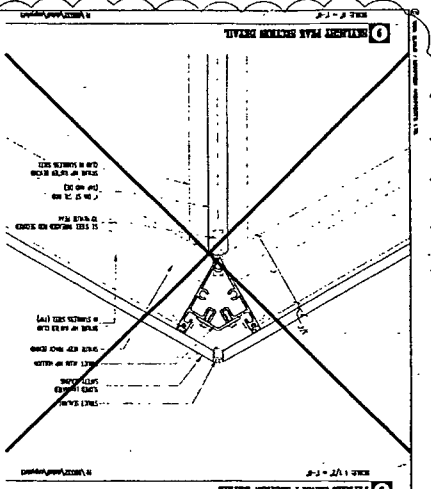
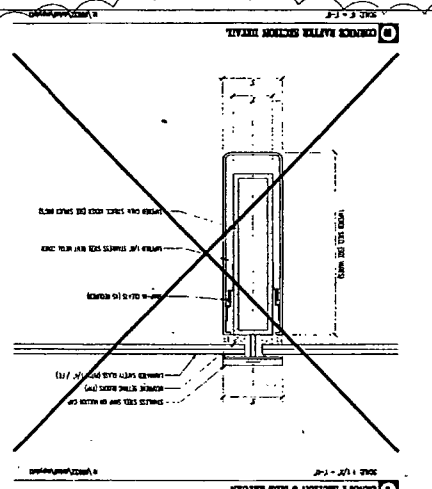
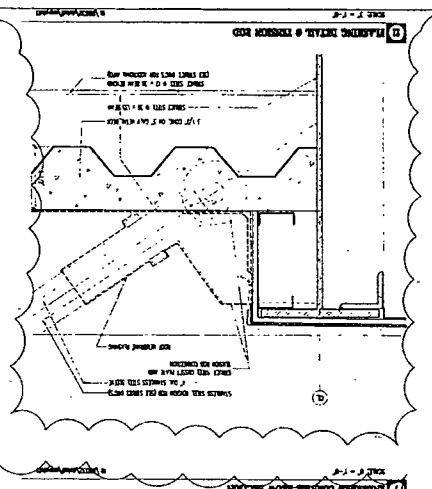
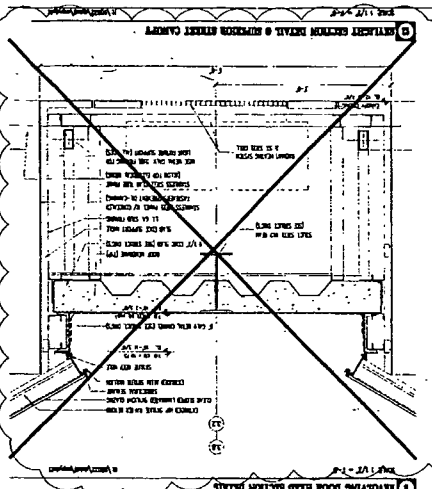


Brendan Reilly 42nd Ward

A4.118

SUBURBAN STREET
ENTRANCE
CANOPY
SECTION DETAILS

NO.	DESCRIPTION	QUANTITY
1	1/2" x 1/2" x 1/2" ALUMINUM ANGLE	100
2	1/2" x 1/2" x 1/2" ALUMINUM ANGLE	100
3	1/2" x 1/2" x 1/2" ALUMINUM ANGLE	100
4	1/2" x 1/2" x 1/2" ALUMINUM ANGLE	100
5	1/2" x 1/2" x 1/2" ALUMINUM ANGLE	100
6	1/2" x 1/2" x 1/2" ALUMINUM ANGLE	100
7	1/2" x 1/2" x 1/2" ALUMINUM ANGLE	100
8	1/2" x 1/2" x 1/2" ALUMINUM ANGLE	100
9	1/2" x 1/2" x 1/2" ALUMINUM ANGLE	100
10	1/2" x 1/2" x 1/2" ALUMINUM ANGLE	100
11	1/2" x 1/2" x 1/2" ALUMINUM ANGLE	100
12	1/2" x 1/2" x 1/2" ALUMINUM ANGLE	100
13	1/2" x 1/2" x 1/2" ALUMINUM ANGLE	100
14	1/2" x 1/2" x 1/2" ALUMINUM ANGLE	100
15	1/2" x 1/2" x 1/2" ALUMINUM ANGLE	100
16	1/2" x 1/2" x 1/2" ALUMINUM ANGLE	100
17	1/2" x 1/2" x 1/2" ALUMINUM ANGLE	100
18	1/2" x 1/2" x 1/2" ALUMINUM ANGLE	100
19	1/2" x 1/2" x 1/2" ALUMINUM ANGLE	100
20	1/2" x 1/2" x 1/2" ALUMINUM ANGLE	100
21	1/2" x 1/2" x 1/2" ALUMINUM ANGLE	100
22	1/2" x 1/2" x 1/2" ALUMINUM ANGLE	100
23	1/2" x 1/2" x 1/2" ALUMINUM ANGLE	100
24	1/2" x 1/2" x 1/2" ALUMINUM ANGLE	100
25	1/2" x 1/2" x 1/2" ALUMINUM ANGLE	100
26	1/2" x 1/2" x 1/2" ALUMINUM ANGLE	100
27	1/2" x 1/2" x 1/2" ALUMINUM ANGLE	100
28	1/2" x 1/2" x 1/2" ALUMINUM ANGLE	100
29	1/2" x 1/2" x 1/2" ALUMINUM ANGLE	100
30	1/2" x 1/2" x 1/2" ALUMINUM ANGLE	100
31	1/2" x 1/2" x 1/2" ALUMINUM ANGLE	100
32	1/2" x 1/2" x 1/2" ALUMINUM ANGLE	100
33	1/2" x 1/2" x 1/2" ALUMINUM ANGLE	100
34	1/2" x 1/2" x 1/2" ALUMINUM ANGLE	100
35	1/2" x 1/2" x 1/2" ALUMINUM ANGLE	100
36	1/2" x 1/2" x 1/2" ALUMINUM ANGLE	100
37	1/2" x 1/2" x 1/2" ALUMINUM ANGLE	100
38	1/2" x 1/2" x 1/2" ALUMINUM ANGLE	100
39	1/2" x 1/2" x 1/2" ALUMINUM ANGLE	100
40	1/2" x 1/2" x 1/2" ALUMINUM ANGLE	100
41	1/2" x 1/2" x 1/2" ALUMINUM ANGLE	100
42	1/2" x 1/2" x 1/2" ALUMINUM ANGLE	100
43	1/2" x 1/2" x 1/2" ALUMINUM ANGLE	100
44	1/2" x 1/2" x 1/2" ALUMINUM ANGLE	100
45	1/2" x 1/2" x 1/2" ALUMINUM ANGLE	100
46	1/2" x 1/2" x 1/2" ALUMINUM ANGLE	100
47	1/2" x 1/2" x 1/2" ALUMINUM ANGLE	100
48	1/2" x 1/2" x 1/2" ALUMINUM ANGLE	100
49	1/2" x 1/2" x 1/2" ALUMINUM ANGLE	100
50	1/2" x 1/2" x 1/2" ALUMINUM ANGLE	100



THE PENINSULA
CHICAGO

CHICAGO
ILLINOIS

CHICAGO
ILLINOIS

CHICAGO
ILLINOIS

CHICAGO
ILLINOIS

CHICAGO
ILLINOIS

CHICAGO
ILLINOIS

CHICAGO
ILLINOIS

APPLICATION TO USE THE PUBLIC RIGHT OF WAY

RECEIVED
MAR 11 2011

APPLICANT INFORMATION:

NAME: Peninsula Chicago, LLC

BY:

ACCT#: 206313 RENEWAL SITE#: 1

PERMIT#: 1049216

ADDRESS: 108 E. Superior St.

ZIP CODE: 60611

CONTACT PERSON: David F. Quigley

TITLE: PHONE: (312)573-6640

Check box for change of mailing address. Provide information below

New Mailing Address: _____

Phone: _____

Contact: _____

Note: Any changes to ownership requires a new application.

If no changes, complete applicant certification, obtain Alderman's signature, include photo(s) and sketch as described below. Return to:

City of Chicago
Department of Business Affairs and Consumer Protection
Business Assistance Center - Public Way Use Unit
City Hall - 121 N. LaSalle Street, Room 800
Chicago, IL 60602
(312)-74-GOBIZ (312-744-6249)

USE OF THE PUBLIC WAY

Type How Many? Building Address

Cornice	1	108 E. SUPERIOR ST.
---------	---	---------------------

ALDERMAN'S SIGNATURE: *D. Quigley* WARD: 42 DATE: 3-17-11