



Office of the Chicago City  
Clerk



Or2012-191

Office of the City Clerk

City Council Document Tracking Sheet

<b>Meeting Date:</b>	4/24/2012
<b>Sponsor(s):</b>	Reilly, Brendan (42)
<b>Type:</b>	Order
<b>Title:</b>	Issuance of permits for sign(s)/signboard(s) at 74 E Jackson Blvd/224 S Michigan Ave
<b>Committee(s) Assignment:</b>	Committee on Zoning, Landmarks and Building Standards

Committee on Zoning, Landmarks  
and Building Standards  
City Council Meeting, April 18, 2012  
Alderman Brendan Reilly, 42<sup>nd</sup> Ward  
Sign Order

ORDERED, That the Commissioner of Buildings is hereby directed to issue a sign permit to:

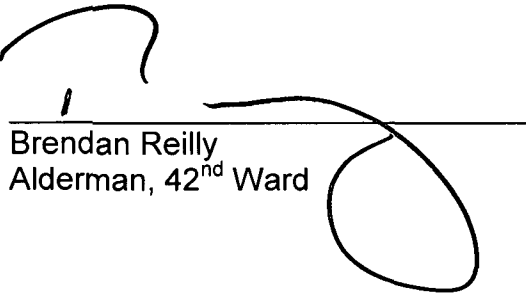
Icon Identity Solutions  
1418 Elmhurst Road  
Elk Grove Village, IL 60007

For the erection of a sign/signboard over 24 feet in height and/or over 100 square feet (in area of one face) at:

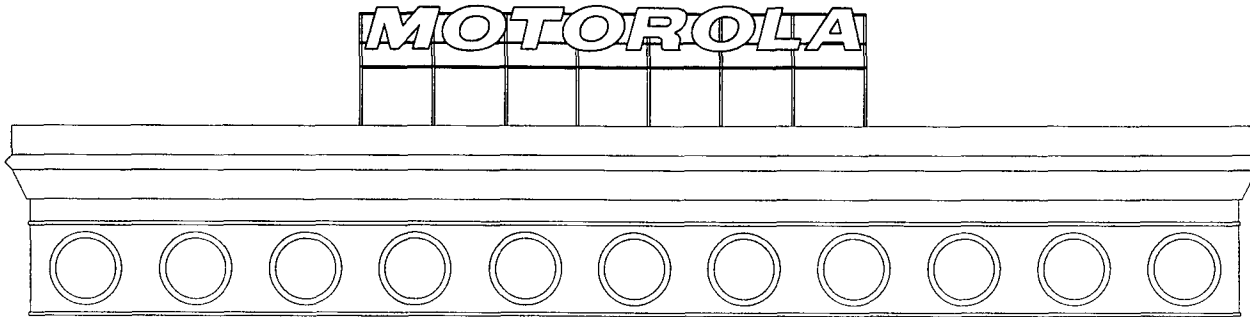
74 E. Jackson Boulevard/ 224 South Michigan Avenue  
Chicago, IL 60604

Dimensions: length 69' height 5'9"  
Height above grade/roof to top of sign 19 feet  
Total Square Foot Area 397 square feet  
Elevation East

Such sign shall comply with all applicable provisions of TITLE 17 of the Chicago Zoning Ordinance and all other applicable provisions of the Municipal Code of the City of Chicago governing the construction and maintenance of outdoor signs, signboards and structures.

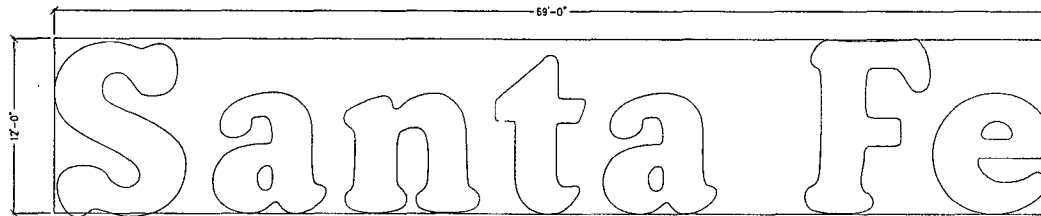


Brendan Reilly  
Alderman, 42<sup>nd</sup> Ward

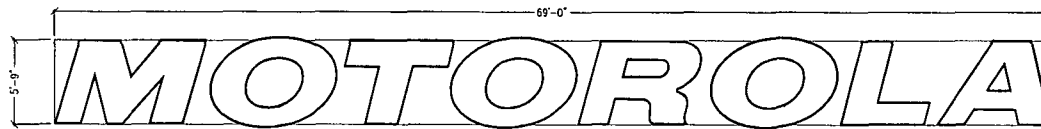


○ FRONT BUILDING ELEVATION

SCALE: 1/16"=1'-0"



ORIGINAL SIGN: 828 SQ. FT. TOTAL



PROPOSED SIGN: 397 SQ. FT. TOTAL

○ EXISTING SIGN/NEW SIGN SQUARE FOOTAGE COMPARISON

SCALE: 1/8"=1'-0"

**icon**  
Identity Solutions


1416 ELMHURST RD.  
ELK GROVE VILLAGE  
ILLINOIS 60007

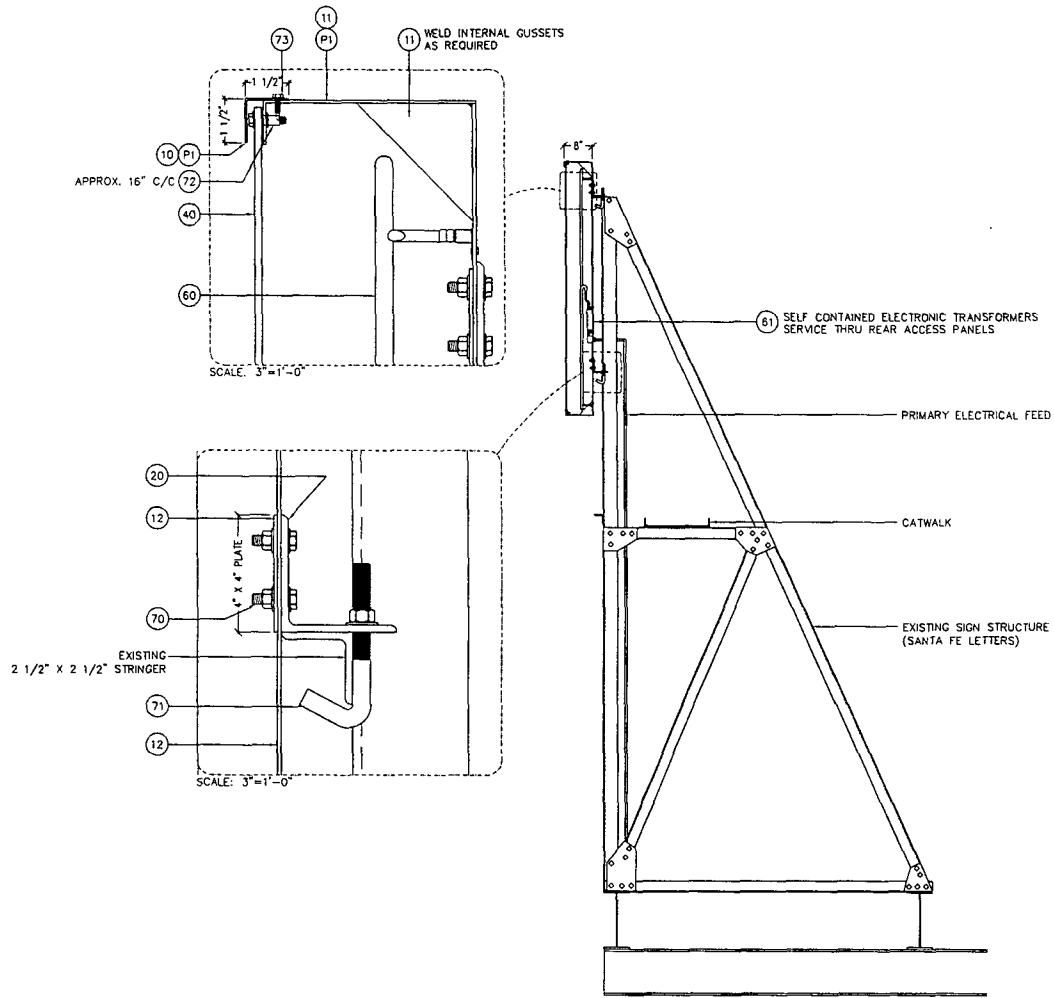
SIGN ID: -

**FILE** 5'-9" X 69'-0" NEON ILLUMINATED MOTOROLA CHANNEL LETTERSET

DRAWINGS ARE THE EXCLUSIVE PROPERTY OF ICON IDENTITY SOLUTIONS INC. ANY UNAUTHORIZED USE OR DUPLICATION IS NOT PERMITTED. THIS DESIGN IS INTENDED FOR USE BY THE ICON COMPANIES AND THEIR APPROVED VENDORS IN FABRICATION, ASSEMBLY AND INSTALLATION. ICON MAKES NO CLAIM TO ANY STRUCTURAL, ELECTRICAL, MECHANICAL OR FOUNDATION REQUIREMENTS IF THIS DESIGN IS USED OUTSIDE OF THE ICON COMPANIES AND THE APPROVED VENDORS.

LOCATION:	CHICAGO, IL
LOCATION No.:	--
REQUEST No.:	--
DRAWN BY:	JOHN B ERICKSEN
DATE DRAWN:	03/07/2012
DRAWING SCALE:	AS NOTED

 <b>MOTOROLA</b>	
CHECKED BY:	CLAY SPANJER
DATE CHECKED:	03/12/2012
FILE:	MOT0002D SHEET: 1/5



(A) SECTION @ LETTERS  
SCALE: 3/8"=1'-0"

**icon**  
Identity Solutions


1418 ELMHURST RD.  
ELK GROVE VILLAGE  
ILLINOIS 60007

SIGN ID: -

**5'-8" X 69'-0" NEON ILLUMINATED MOTOROLA CHANNEL LETTERSET**

DRAWINGS ARE THE EXCLUSIVE PROPERTY OF ICON IDENTITY SOLUTIONS INC. ANY UNAUTHORIZED USE OR REPLICATION IS NOT PERMITTED. THIS DESIGN IS INTENDED FOR USE BY THE ICON COMPANIES AND THEIR APPROVED VENDORS IN FABRICATION, ASSEMBLY AND INSTALLATION. ICON MAKES NO CLAIM TO ANY STRUCTURAL, ELECTRICAL, MECHANICAL OR FOUNDATION ENGINEERING IF THIS DESIGN IS USED OUTSIDE OF THE ICON COMPANIES AND THE APPROVED VENDORS

LOCATION:	CHICAGO, IL
LOCATION No.:	-
REQUEST No.:	-
DRAWN BY:	JOHN B ERICKSEN
DATE DRAWN:	03/07/2012
DRAWING SCALE:	AS NOTED

 <b>MOTOROLA</b>	
CHECKED BY:	CLAY SPANJER
DATE CHECKED:	03/12/2012
FILE:	MOT0002D
SHEET:	3/5

REV.	REQUEST No.	REVISION DESCRIPTION	DRAWN BY:	DATE	CHECKED BY:	DATE
B	121608	REVISED LETTER HEIGHT FROM 4'-4" TO 8'-3 5/8"; REMOVED LOGO. ADDED ADDITIONAL STEEL SUPPORT STRUCTURE.	JOHN B. ERICKSEN	03/20/2012	CLAY SPANJER	03/21/2012
C	122453	REVISED SIZE FROM 8'-3 5/8" X 99'-9" TO 5'-9" X 69'-0". REMOVED ADDITIONAL STEEL SUPPORT STRUCTURE	JOHN B. ERICKSEN	04/10/2012	CLAY SPANJER	04/11/2012
D	122816	REVISED RETURNS AND RETAINERS FROM PAINTED WHITE TO PAINTED BLUE (PMS 3000)	JOHN B. ERICKSEN	04/12/2012	EVAN WOLLAK	04/12/2012
-	-	-	-	-	-	-
-	-	-	-	-	-	-
-	-	-	-	-	-	-
-	-	-	-	-	-	-
-	-	-	-	-	-	-
-	-	-	-	-	-	-
-	-	-	-	-	-	-
-	-	-	-	-	-	-



1418 ELMHURST RD.  
ELK GROVE VILLAGE  
ILLINOIS 60007


icon  
Identity Solutions

SIGN ID: -

**TITLE**  
5'-9" X 69'-0" NEON ILLUMINATED MOTOROLA  
CHANNEL LETTERSET

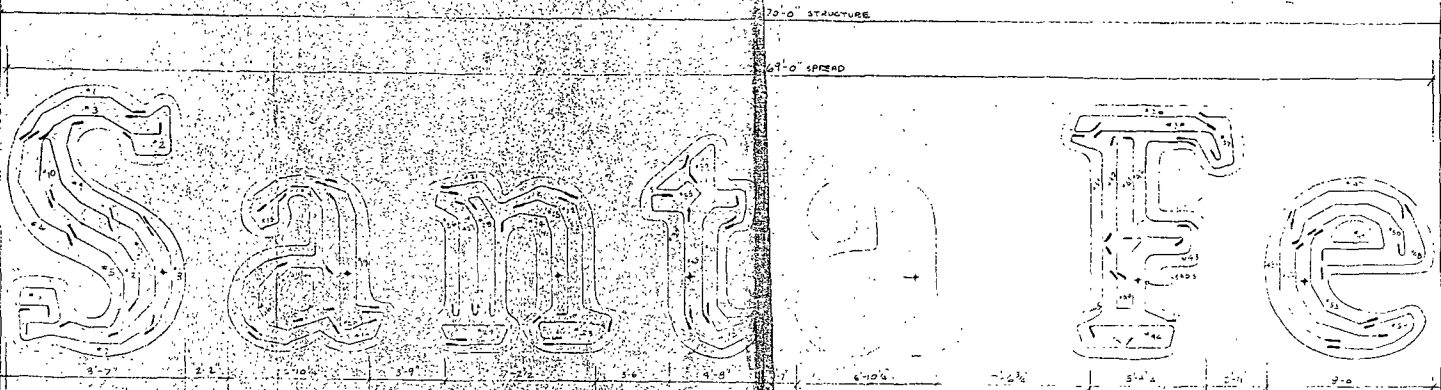
DRAWINGS ARE THE EXCLUSIVE PROPERTY OF ICON IDENTITY SOLUTIONS INC. ANY  
UNAUTHORIZED USE OR DUPLICATION IS NOT PERMITTED. THIS DESIGN IS INTENDED FOR USE  
BY THE ICON COMPANIES AND THEIR APPROVED VENDORS IN FABRICATION, ASSEMBLY AND  
INSTALLATION. ICON MAKES NO CLAIM TO ANY STRUCTURAL, ELECTRICAL, MECHANICAL OR  
FOUNDATION ENGINEERING IF THIS DESIGN IS USED OUTSIDE OF THE ICON COMPANIES AND  
THE APPROVED VENDORS

LOCATION: CHICAGO, IL  
LOCATION No.: -  
REQUEST No.: -  
DRAWN BY: JOHN B ERICKSEN  
DATE DRAWN: 03/07/2012  
DRAWING SCALE: AS NOTED



**MOTOROLA**

CHECKED BY: CLAY SPANJER  
DATE CHECKED: 03/12/2012  
FILE: MOT0002D SHEET: 5/5



1/8" THICKNESS  
4" MIN. EXTER. RACES  
25 MIL. WIRE (FED. SPEC.)  
DEEP GASKET METAL STRAPS  
FOR MOUNTING TUBES

REQUIREMENTS FOR MATERIALS ONLY

ITEM NO.	DESCRIPTION	QTY.	UNIT
1	...	...	...
2	...	...	...
3	...	...	...
4	...	...	...
5	...	...	...
6	...	...	...
7	...	...	...
8	...	...	...
9	...	...	...
10	...	...	...
11	...	...	...
12	...	...	...
13	...	...	...
14	...	...	...
15	...	...	...
16	...	...	...
17	...	...	...
18	...	...	...
19	...	...	...
20	...	...	...
21	...	...	...
22	...	...	...
23	...	...	...
24	...	...	...
25	...	...	...
26	...	...	...
27	...	...	...
28	...	...	...
29	...	...	...
30	...	...	...

REQUIREMENTS FOR MATERIALS ONLY

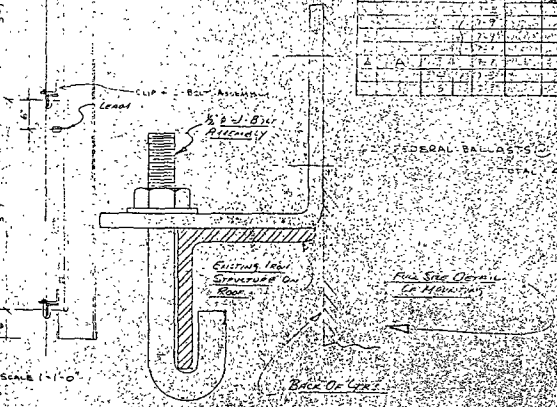
ITEM NO.	DESCRIPTION	QTY.	UNIT
31	...	...	...
32	...	...	...
33	...	...	...
34	...	...	...
35	...	...	...
36	...	...	...
37	...	...	...
38	...	...	...
39	...	...	...
40	...	...	...
41	...	...	...
42	...	...	...
43	...	...	...
44	...	...	...
45	...	...	...
46	...	...	...
47	...	...	...
48	...	...	...
49	...	...	...
50	...	...	...
51	...	...	...
52	...	...	...
53	...	...	...
54	...	...	...
55	...	...	...
56	...	...	...
57	...	...	...
58	...	...	...
59	...	...	...
60	...	...	...

REQUIREMENTS FOR MATERIALS ONLY

ITEM NO.	DESCRIPTION	QTY.	UNIT
61	...	...	...
62	...	...	...
63	...	...	...
64	...	...	...
65	...	...	...
66	...	...	...
67	...	...	...
68	...	...	...
69	...	...	...
70	...	...	...
71	...	...	...
72	...	...	...
73	...	...	...
74	...	...	...
75	...	...	...
76	...	...	...
77	...	...	...
78	...	...	...
79	...	...	...
80	...	...	...

REQUIREMENTS FOR MATERIALS ONLY

ITEM NO.	DESCRIPTION	QTY.	UNIT
81	...	...	...
82	...	...	...
83	...	...	...
84	...	...	...
85	...	...	...
86	...	...	...
87	...	...	...
88	...	...	...
89	...	...	...
90	...	...	...
91	...	...	...
92	...	...	...
93	...	...	...
94	...	...	...
95	...	...	...
96	...	...	...
97	...	...	...
98	...	...	...
99	...	...	...
100	...	...	...



**FEDERAL SIGN**  
Division Federal Signal Corporation

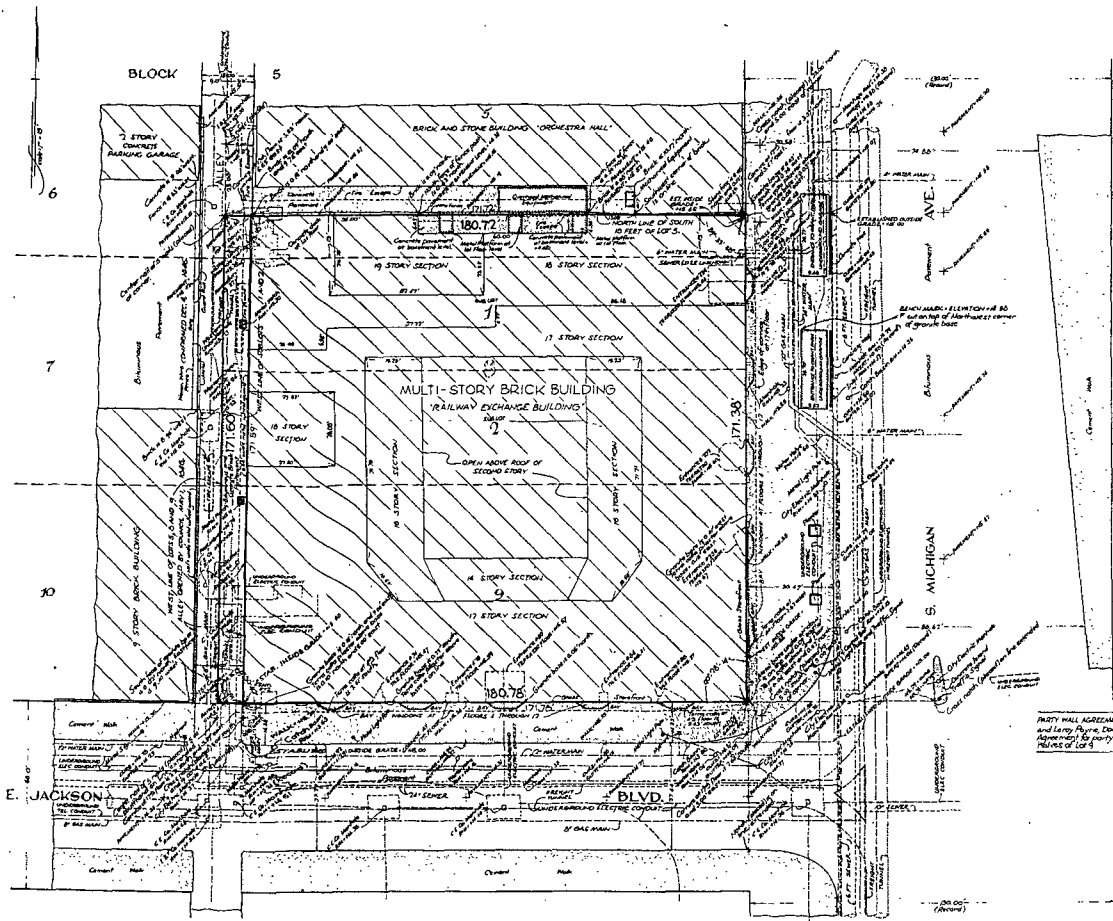
THIS IS AN ORIGINAL UNPUBLISHED DRAWING, SUBMITTED FOR YOUR PERSONAL USE, IN CONNECTION WITH A PROJECT BEING PLANNED FOR YOU BY FEDERAL SIGN. IT IS NOT TO BE REPRODUCED, COPIED OR EXHIBITED IN ANY FASHION WITHOUT WRITTEN PERMISSION OF FEDERAL SIGN.

CUSTOMER	SANTA FE	CUSTOMER PROJECT NO.	8-16-B-2
DRAWING NO.	27-236500	DATE	3/8/70
DESIGNED BY	OSK	ENGINEER	KALBY
CHECKED BY		DATE	
SCALE	1/4" = 1'-0"		

CHICAGO GUARANTEE SURVEY COMPANY  
PLAT of SURVEY

105 W. MADISON ST., CHICAGO, ILLINOIS 60602  
74 PA. 6-6340 SA. 504

THE SOUTH 15 FEET OF LOT 5, SUB-LOTS 1 AND 2 OF LOT 8, AND ALL OF LOT 9, BLOCK 5, A FRACTIONAL SECTION IN ADDITION TO CHICAGO, THE WEST HALF OF THE NORTHWEST QUARTER OF SECTION 15, TOWNSHIP 39 NORTH, RANGE 14 EAST OF THE THIRD PRINCIPAL MERIDIAN, COOK COUNTY, ILLINOIS, CONTAINING 30,996 SQUARE FEET OF LAND, MORE OR LESS



PARTY WALL AGREEMENT OF RECORD between the Chicago Guaranty and Larry Meyer, Dec. 14th 1921. Agreement recorded October 20, 1925. Agreement to party wall on the dividing line between the North and South halves of Lot 5.

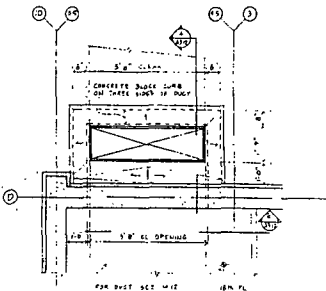
**APPROVED**  
I, **John R. Anderson**, City Engineer,  
do hereby certify that the above is a true and correct copy of the original as shown to me by the Chicago Guaranty Survey Company.  
WITNESSED my hand and the seal of the City of Chicago, Illinois, this 15th day of October, 1925.  
JOHN R. ANDERSON  
City Engineer

Dimensions are shown in feet and decimal parts thereof.  
Changes of points before building by stone and of once  
refer to any reference.  
For building lines and other restrictions not shown hereon, refer  
to abstracts, deed, contract and local building law regulations.  
Scale in Feet  
0 10 20 30 40

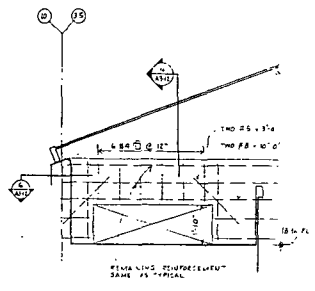
**NOTES**  
Elevations are shown in feet on the Chicago City Datum.  
Utilities are shown hereon according to official records, plat and  
visible improvements. Location of underground facilities should  
be verified with the local municipalities and utility companies  
before digging.  
Zone 86-7 (Restricted Central Business District)

ORDERED BY SAVERS LAND IMPROVEMENT  
ORDER No. 8110021

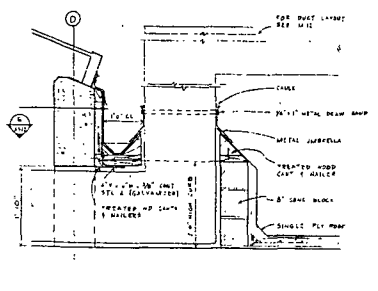
CHICAGO GUARANTEE SURVEY COMPANY  
By **John R. Anderson**, President  
and **John J. Anderson**, Secretary



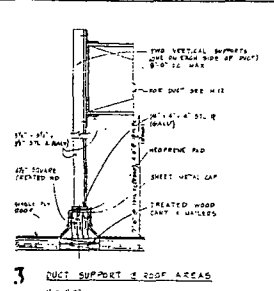
6 PARTIAL PLAN DETAIL  
1/2" = 1'-0"



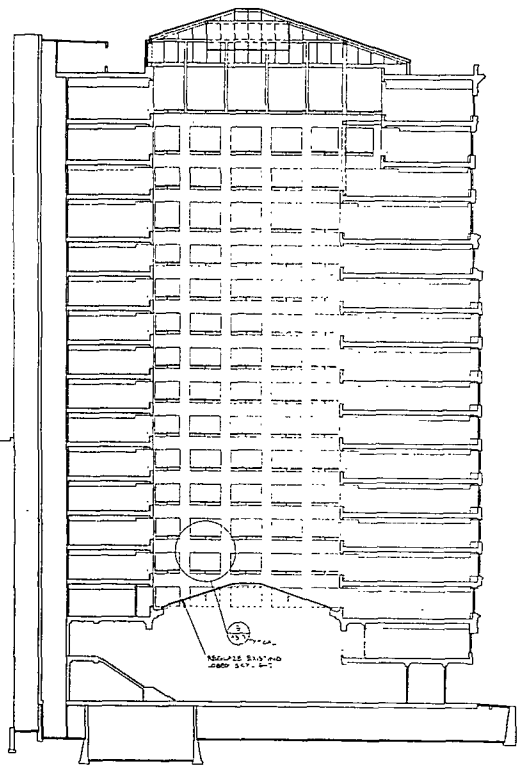
5 EXTERIOR OPENING FOR LOOP DUCT  
1/2" = 1'-0"



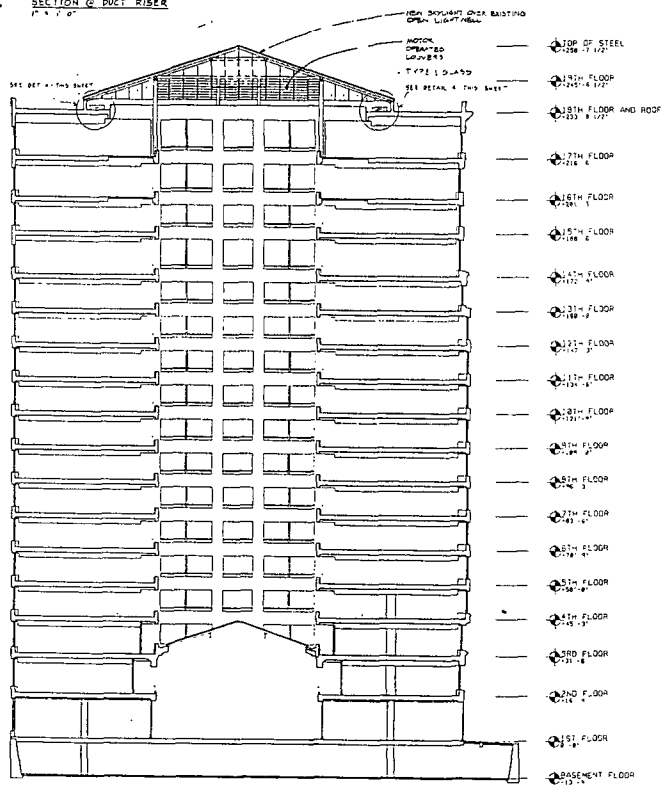
4 SECTION OF DUCT RISER  
1" = 1'-0"



3 DUCT SUPPORT AT ROOF AREAS  
1" = 1'-0"



2 NORTH-SOUTH SECTION  
SCALE: 1/16" = 1'-0"



1 EAST-WEST SECTION  
SCALE: 1/16" = 1'-0"

NO. _____ DESCRIPTION OF REVISION _____	

### Metz Train Youngren

### RAILWAY EXCHANGE BUILDING RENOVATION

FOR  
SAVI & FE INDUSTRIES  
224 S. WICKHAM ST. SUITE  
CHICAGO, ILLINOIS 60604

### BUILDING SECTIONS

RECEIVED  
JAN 26 1984  
PEPPER CONSTRUCTION CO.

NO. _____	NO. _____
1132188	MJM
DATE _____	DATE _____
1-22-82	JG
SCALE _____	SCALE _____
1/16" = 1'-0"	JRG/255

## A3-12