



City of Chicago



Or2015-723

Office of the City Clerk

Document Tracking Sheet

Meeting Date:	11/18/2015
Sponsor(s):	Napolitano (41)
Type:	Order
Title:	Issuance of permits for sign(s)/signboard(s) at American Airlines O'Hare International Airport Hangar - 1,378.5 sq. ft.
Committee(s) Assignment:	Committee on Zoning, Landmarks and Building Standards

Committee on Zoning, Landmarks
and Building Standards
City Council Meeting
Alderman Anthony Napolitano 41st Ward
Sign Order

ORDERED, That the Commissioner of Buildings is hereby directed to issue a sign permit to:


Midwest Sign & Lighting, Inc.
4910 W Wilshire BLVD
Country Club Hills, IL. 60478

For the erection of a sign/signboard over 24 feet in height and/or over 100 square feet (in area of one face) at:

American Airlines ORD Hanger

Dimensions: length	<u>76' 6 3/8"</u>	height	<u>18' 0"</u>
Height above grade/roof to top of sign	<u>67 feet</u>		
Total Square Foot Area	<u>1378.5 square feet</u>		
Elevation	<u>49 feet</u>		

Such sign shall comply with all applicable provisions of TITLE 17 of the Chicago Zoning Ordinance and all other applicable provisions of the Municipal Code of the City of Chicago governing the construction and maintenance of outdoor signs, signboards and structures.



Anthony Napolitano
Alderman, 41st Ward

colite

5 TECHNOLOGY CIRCLE
COLUMBIA, SC 29203
P 803 926 7926

THIS IS AN ORIGINAL UNPUBLISHED DESIGN CREATED BY COLITE IT IS SUBMITTED FOR YOUR PERSONAL USE IN CONNECTION WITH THE PROJECT PLANNED FOR YOU BY COLITE IT IS NOT TO BE SHOWN TO ANYONE OUTSIDE YOUR ORGANIZATION NOR IS IT TO BE REPRODUCED, COPIED, OR EXHIBITED IN ANY FASHION WHATSOEVER, ON ANY PART OF THIS DESIGN (EXCEPTING REGISTERED TRADEMARKS) REMAIN THE PROPERTY OF COLITE.

DRAWING NUMBER
AMA-150553

TITLE
CST ILL 216m CHAN

SIGN TYPE

CUSTOMER
AMERICAN AIRLINES

LOCATION
CHICAGO, IL

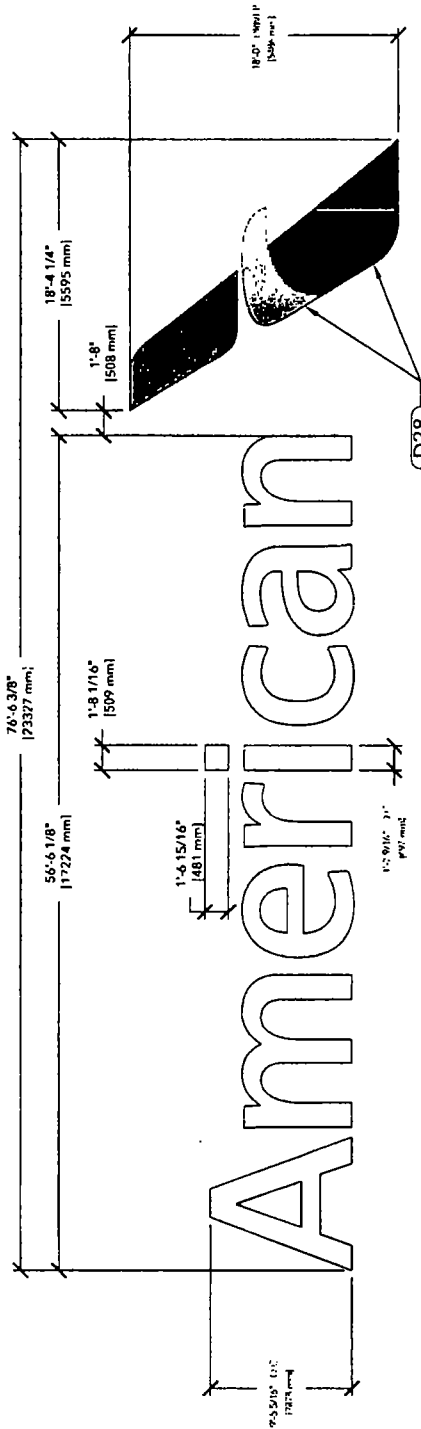
DATE
09-30-15

PHASE
PH 11X17

REVISIONS

NO.	DATE	DESCRIPTION
1	09-30-15	CREATED DRAWING

SHEET **1** OF **3**



ELEVATION
SCALE 1/8" = 1'-0"

SPECIFICATIONS

DESCRIPTION	MATERIAL
PAIN	VINYL
(P2) IMPASSABLE FINANCE AA DARK GRAY	DIGITAL PRINT
(P7) MATTE WHITE	(D7) COLOR DIGITAL PRINT ON 2 LAYER ORACAL 2850
	WHITE TRANSPARENT w/ 7.5M MATTE LAMINATE

THIS SIGN TO BEAR UNDERWRITERS LABEL

NOTE: THIS SIGN IS INTENDED TO BE INSTALLED IN ACCORDANCE WITH THE NATIONAL ELECTRICAL CODE AND/OR OTHER APPLICABLE LOCAL CODES. THIS INCLUDES PROPER WIRING AND BONDING OF THE SIGN.

100-277 VOLTS

NOTICE TO SIGN INSTALLER:
THE VOLTAGE AT THIS SIGN MUST BE BETWEEN 100 & 277 VOLTS FOR THIS SIGN TO OPERATE PROPERLY.

NOTE: SPLICE CONNECTION BOX AND TRANSFORMER MUST NOT BE EXPOSED TO OUTSIDE WEATHER CONDITIONS.

colite

5 TCI INNOLOGY CIRCLE
COLUMBIA SC 29203
P 803 926 7926

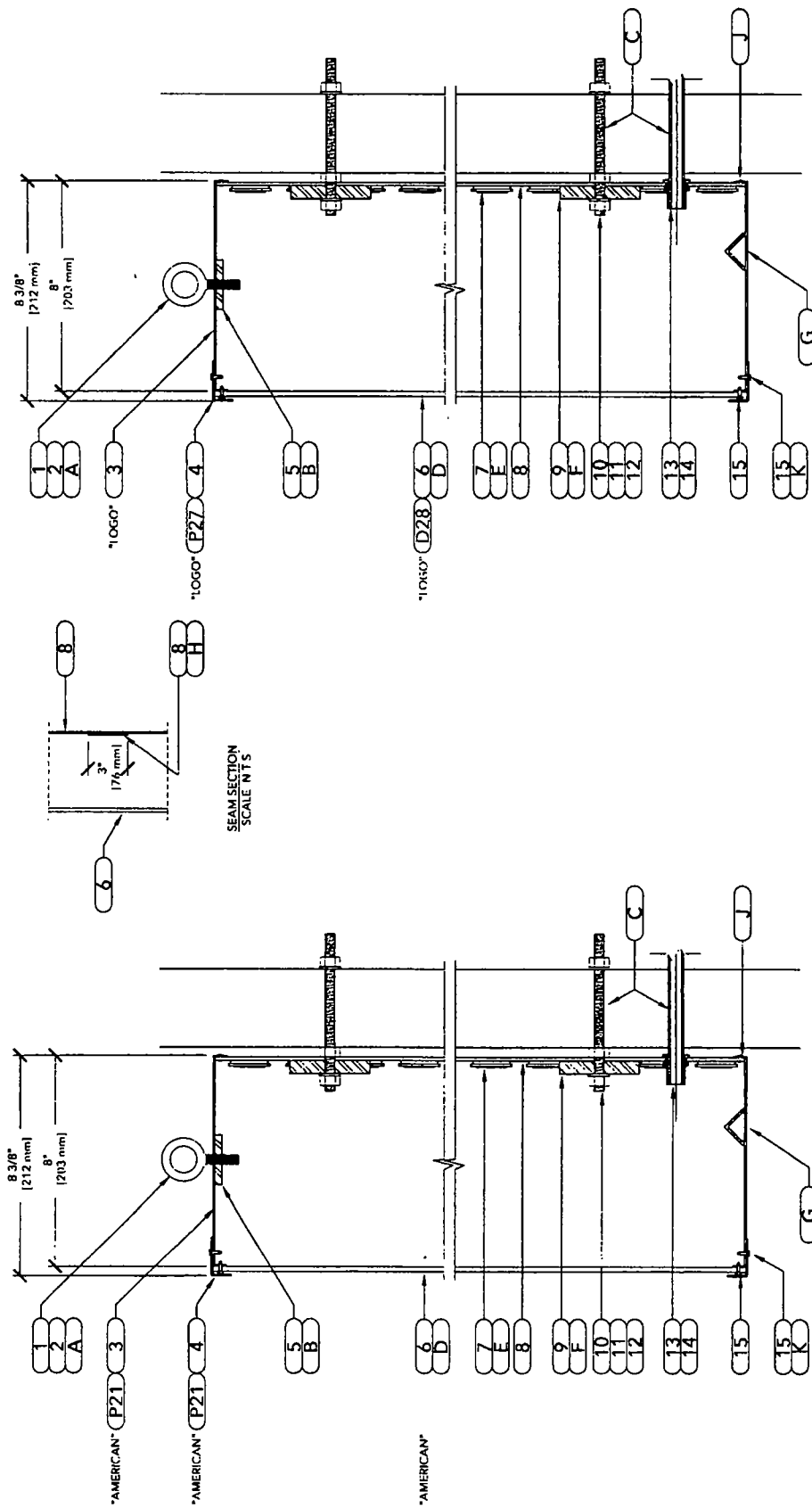
THIS IS AN ORIGINAL UNPUBLISHED DESIGN CREATED BY COLITE. IT IS SUBMITTED FOR YOUR PERSONAL USE IN CONNECTION WITH THE PROJECT PLANNED FOR YOU BY COLITE. IT IS NOT TO BE SHOWN TO ANYONE OUTSIDE YOUR ORGANIZATION WITHOUT YOUR WRITTEN PERMISSION. NO REPRODUCTION, COPIES, OR EXHIBITS IN ANY FASHION WHATSOEVER, OR ANY PART OR WHATSOEVER, AL OR ANY PART OF THIS DESIGN (ACCEPTING REGISTERED TRADEMARKS) REMAIN THE PROPERTY OF COLITE.

DRAWING NUMBER AMA-150553
TITLE CST ILL 216m CHAN
SIGN INTY

CUSTOMER AMERICAN AIRLINES
LOCATION CHICAGO, IL
DATE 09-30-15
PH PH 11X17

REV	DATE	BY	DESCRIPTION
1	09-30-15	DAVID	CREATED DRAWING

SHEET
2 OF **3**



8 3/8"
[212 mm]
8"
[203 mm]

SEAM SECTION
SCALE: 1" = 1"

LETTERS SECTION DETAIL
SCALE: 3" = 1"

LOGO SECTION DETAIL
SCALE: 3" = 1"

SPECIFICATIONS	
PAINT	VINYL
(P21) MPM5260P NUANCE AA DARK GRAY	
(P27) MATTICONS N2207 WHITE	
(P28) DDI OR DIGITAL PRINT ON 2 LAYERS GRACIA 3850 WHITE TRANSLUCENT w/ 215M MATTE LAMINATE	

THIS SIGN TO BEAR UNDERWRITERS LABEL
NOTE: THIS SIGN IS DESIGNED TO BE INSTALLED IN ACCORDANCE WITH THE REQUIREMENTS OF ARTICLE 600 OF THE NATIONAL ELECTRICAL CODE AND/OR OTHER APPLICABLE LOCAL CODES. THIS INCLUDES PROPER GROUNDING AND BONDING OF THE SIGN.

100-277 VOLTS
NOTICE TO SIGN INSTALLER:
THE VOLTAGE AT THIS SIGN MUST BE BETWEEN 100 & 277 VOLTS FOR THIS SIGN TO OPERATE PROPERLY.
NOTE: SPLICE CONNECTION BOX AND TRANSFORMER MUST NOT BE EXPOSED TO OUTSIDE WEATHER CONDITIONS.

MANUFACTURING BILL OF MATERIALS

ITEM #	PART #	DESCRIPTION	QTY
1	1000-147	3/8" X 1 1/4" EYEBOLT	10 EA
3	300-106	.063" X 60" X 120" PRE-PAINTED WHITE ALUMINUM SHEET	6 SHT
4	300-31	3/4" X 1 1/2" X .060" ALUMINUM SOFT ANGLE	411 LF
5	300-49	1/4" X 6" X 12'-0" ALUMINUM FLAT BAR	3 LF
6	100-97	177" X 76" REEL STOCK B54 MARROLON POLYCARBONATE (42447 EQUIVALENT)	115 LF
7	600-58	PL-F54-WH3-N PRINCIPLE FUSION 4 LED	TBD
8	300-9	1/8" X 60" X 120" ALUMINUM SHEET	10 SHT
9	300-48	1/2" X 3" X 12'-0" ALUMINUM FLAT BAR	3 LF
13	1400-72	1/2" DIA PAIGE ELECTRIC 18" L WALL BUSTER	11 EA
14	1000-167	1/2" LOCK NUT	11 EA
15	1000-156	#8 X 1/2" SS FPH TCS SCREW	A/R
17	1400-1	16-2 STR N SHIELD CMP TAPPEN WIRE	110 LF

INSTALLATION BILL OF MATERIALS

ITEM #	PART #	DESCRIPTION	QTY
2	1000-3	3/8"-16 X 1" HEX CAP SCREW SS	10 EA
10	1000-65	3/8"-16 X 6" ALL THREAD	50 EA
11	1000-23	3/8" SS F/W	100 EA
12	1000-15	3/8"-16 SS FHN	150 EA
16	600-81	FRANCE FAST-PAK 1260FS LED POWER SUPPLY	TBD
18	PATTERN	MOUNTING PATTERN	1 FA
19	PAINT	TOUCH UP PAINT (P21) (P27)	1 EA
20	600-3	TRANSCO TRANSFORMER BOX 18" X 7" X 7"	TBD

- A AFTER INSTALLATION, REPLACE (ITEM 1) WITH (ITEM 2), PAINT TO MATCH RETURNS
- B DRILL & TAP 1/4" ALUMINUM FLAT BAR TO RECEIVE (ITEM 1)
- C INSTALLER TO ENSURE THAT ALL PENETRATIONS ARE TO BE WATER TIGHT IN EXTERNAL APPLICATIONS
- D FACES TO BE MECHANICALLY FASTENED TO RETAINERS
- E LETTERS POWERED BY A REMOTE CLASS (2) POWER SUPPLY, TO HAVE 12 INCH GROUND /TAIL WHIP
- F DRILL & TAP TO RECEIVE (ITEM 10)
- G (MIN 2) 1/4" WEEP HOLES PER LETTER. LOCATE AT EACH LOW POINT w/ LIGHT SHIELD COVER
- H VERSLOK 3" WIDE FISH PLATE TO EACH SIDE @ INTERIOR PANEL BACKER SEAM
- J SECURE RETURNS AND BACKS VIA RIVETS AS REQ'D. SEAMS BETWEEN RETURNS AND BACKS ARE TO CAULKED
- K PAINTED TO MATCH RETURN

colite
 TECHNOLOGY CIRCLE
 COLUMBIA, SC 29203
 P 803 926 7926

THIS IS AN ORIGINAL UNPUBLISHED DESIGN CREATED BY COLITE. IT IS SUBMITTED FOR YOUR PERSONAL USE IN CONNECTION WITH THE PROJECT PLANNED FOR YOU BY COLITE. IT IS NOT TO BE SHOWN TO ANYONE OUTSIDE YOUR ORGANIZATION NOR IS IT TO BE USED, REPRODUCED, COPIED, OR ALTERED IN ANY MANNER WITHOUT THE WRITTEN PERMISSION OF COLITE. DESIGN (EXCEPTING REGISTERED TRADEMARKS) REMAIN THE PROPERTY OF COLITE.

PROJECT NUMBER
AMA-150553

TITLE
 CST ILL 216th CHAN

SIGN DATE

CUSTOMER
AMERICAN AIRLINES

LOCATION
CHICAGO, IL

DATE
09-30-15

PH
11X17

REVISIONS

REV #	DATE	DESCRIPTION
1	09-30-15	GRAPHS/DRAWING

THIS SIGN TO BEAR UNDERWRITERS LABEL

NOTE: THIS SIGN IS INTENDED TO BE INSTALLED IN ACCORDANCE WITH THE REQUIREMENTS OF CODES AND/OR OTHER APPLICABLE LOCAL ORDINANCES. THIS INCLUDES PROPER GROUNDING AND BONDING OF THE SIGN.

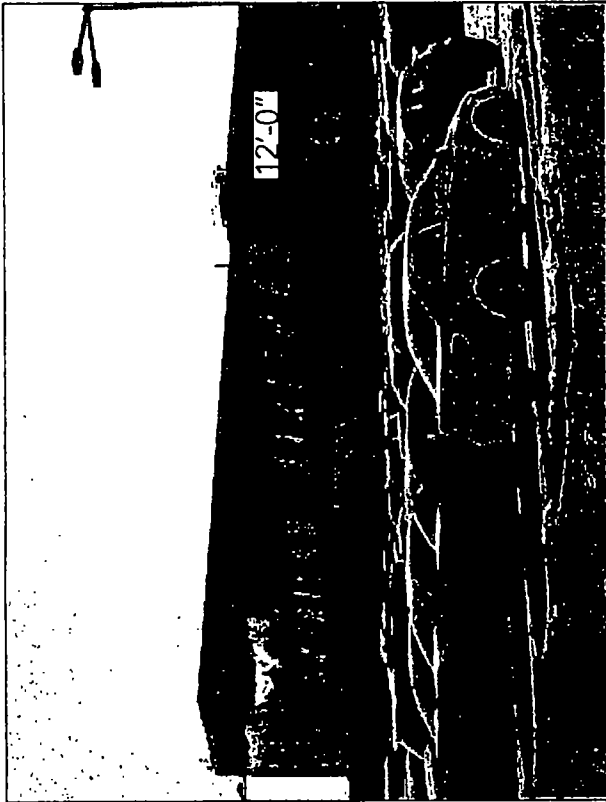
SPECIFICATIONS

PAINT	VINYL
(P21) MPF5200 FINANCE AA DARK GRAY	
(P22) MANTHEMS NT03 WHITE	
DIGITAL PRINT	
(D) P1) C01 OR DIGITAL PRINT ON 2 LAYERS ORACAL 3550	
(P23) MANTHEMS NT03 WHITE	
WHITE TRANSLUCENT # 2332A MATTE LAMINATE	

100-277 VOLTS

NOTICE TO SIGN INSTALLER:
 THE VOLTAGE AT THIS SIGN MUST BE BETWEEN 100 & 277 VOLTS FOR THIS SIGN TO OPERATE PROPERLY.
 NOTE: SPLICE CONNECTION BOX AND TRANSFORMER MUST NOT BE EXPOSED TO OUTSIDE WEATHER CONDITIONS.

Sign #6 [Hangar 2]



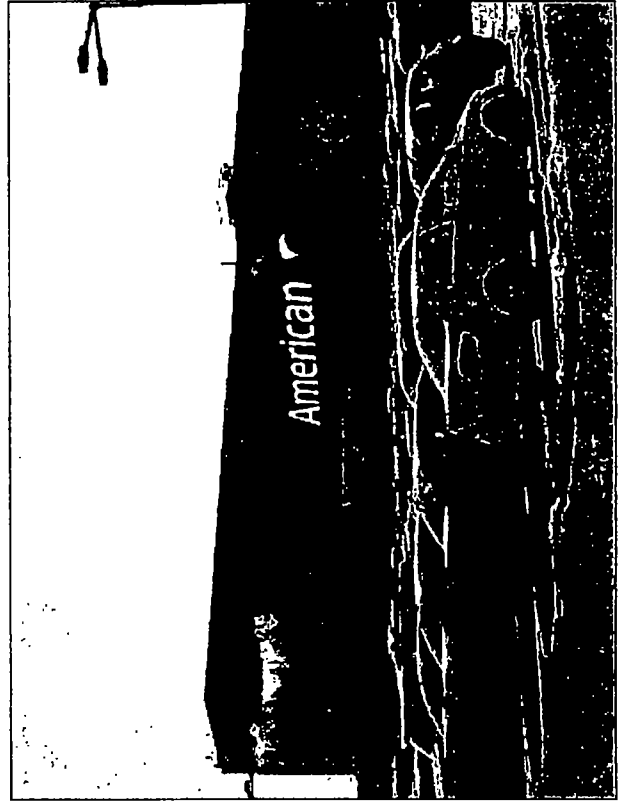
Existing: Letterset

- Pylon/Monument
- Directional
- Panel
- Letterset
- Illuminated
- Non-Illuminated
- Vinyl
- Single Face
- Double Face
- Wall Sign
- Other

Height: 12'-0"

Width: TBD

Comments:



Recommended: Custom Letterset

- Pylon/Monument
- Directional
- Panel
- Letterset
- Illuminated
- Non-Illuminated
- Vinyl
- Single Face
- Double Face
- Wall Sign
- Other

Height: 18'-0"

Width: 76'-4.6"

Comments:



Installer Notes:

Remove existing letterset. Install new letterset in its place.

Restoration Requirements:

Patch/paint/repair as required.

Site Map

