



City of Chicago



Or2018-303

Office of the City Clerk

Document Tracking Sheet

Meeting Date:	6/27/2018
Sponsor(s):	Dowell (3)
Type:	Order
Title:	Issuance of permits for sign(s)/signboard(s) at 123 E Cermak Rd
Committee(s) Assignment:	Committee on Zoning, Landmarks and Building Standards

CITY COUNCIL
COMMITTEE ON ZONING, LANDMARKS AND BUILDING STANDARDS

COUNCIL ORDER

RE: Approval of sign over 100 square feet in area or over 24 feet above grade

ORDERED, that the City Council hereby approves the following sign application submitted by:

Applicant*: Hampton Inn, Home 2 Suites by Hilton, Hilton Garden Inn

(* The Applicant is the owner of the real property or the business tenant of the real property. Do not list the sign contractor, sign erector, sign company or advertising entity in the above space.)

This Order approves the following sign in accordance with Municipal Code of Chicago Section 13-20-680:

Address of Sign: 123 E. Cermak Road Chicago, IL 60616

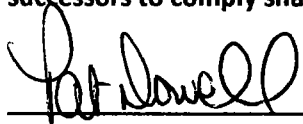
Zoning District: PD-1153

DOB Sign Permit Application #: 100765737

Sign Details:

1. On-premise OR Off-premise
2. Static sign OR Dynamic-image display sign
3. Number of sign faces 1
4. Projecting over the public way No (Yes or No) If yes, Public Way Use #: N/A
5. Dimensions: Length 113 feet 2 inches Height 13 feet 4 inches
Total square feet in area: 1508 feet 0 inches
6. Height above grade: 230 feet 11 inches
7. Elevation (side of building or lot where the sign will be erected): South
8. Name of Sign Contractor/Erector: Identity Services, LLC

To be legal, such sign shall comply with all provisions of Title 17 of the Chicago Municipal Code ("Zoning Ordinance") and all other provisions of the Municipal Code governing the permitting, construction and maintenance and removal of signs and sign structures. Failure of the applicant and the applicant's successors to comply shall be grounds for invalidation or revocation of the sign permit.


Alderman

03
Ward

DESIGN # 038833413
 Sheet 2 of 9
 Client HILTON
 ADDRESS 123 EAST CERMAK ROAD
 CHICAGO, ILLINOIS
 Account Rep. MSW / MAW
 Designer MAB
 Date 3/7/16

Revision/Date
11-15-15 LEVEL 18
11-15-15 LEVEL 17
11-15-15 LEVEL 16
11-15-15 LEVEL 15
11-15-15 LEVEL 14
11-15-15 LEVEL 13
11-15-15 LEVEL 12
11-15-15 LEVEL 11
11-15-15 LEVEL 10
11-15-15 LEVEL 09
11-15-15 LEVEL 08
11-15-15 LEVEL 07
11-15-15 LEVEL 06
11-15-15 LEVEL 05
11-15-15 LEVEL 04
11-15-15 LEVEL 03
11-15-15 LEVEL 02
11-15-15 LEVEL 01
11-15-15 LEVEL 00
11-15-15 LEVEL -01
11-15-15 LEVEL -02
11-15-15 LEVEL -03
11-15-15 LEVEL -04
11-15-15 LEVEL -05
11-15-15 LEVEL -06
11-15-15 LEVEL -07
11-15-15 LEVEL -08
11-15-15 LEVEL -09
11-15-15 LEVEL -10
11-15-15 LEVEL -11
11-15-15 LEVEL -12
11-15-15 LEVEL -13
11-15-15 LEVEL -14
11-15-15 LEVEL -15
11-15-15 LEVEL -16
11-15-15 LEVEL -17
11-15-15 LEVEL -18
11-15-15 LEVEL -19
11-15-15 LEVEL -20
11-15-15 LEVEL -21
11-15-15 LEVEL -22
11-15-15 LEVEL -23
11-15-15 LEVEL -24
11-15-15 LEVEL -25
11-15-15 LEVEL -26
11-15-15 LEVEL -27
11-15-15 LEVEL -28
11-15-15 LEVEL -29
11-15-15 LEVEL -30
11-15-15 LEVEL -31
11-15-15 LEVEL -32
11-15-15 LEVEL -33
11-15-15 LEVEL -34
11-15-15 LEVEL -35
11-15-15 LEVEL -36
11-15-15 LEVEL -37
11-15-15 LEVEL -38
11-15-15 LEVEL -39
11-15-15 LEVEL -40
11-15-15 LEVEL -41
11-15-15 LEVEL -42
11-15-15 LEVEL -43
11-15-15 LEVEL -44
11-15-15 LEVEL -45
11-15-15 LEVEL -46
11-15-15 LEVEL -47
11-15-15 LEVEL -48
11-15-15 LEVEL -49
11-15-15 LEVEL -50
11-15-15 LEVEL -51
11-15-15 LEVEL -52
11-15-15 LEVEL -53
11-15-15 LEVEL -54
11-15-15 LEVEL -55
11-15-15 LEVEL -56
11-15-15 LEVEL -57
11-15-15 LEVEL -58
11-15-15 LEVEL -59
11-15-15 LEVEL -60
11-15-15 LEVEL -61
11-15-15 LEVEL -62
11-15-15 LEVEL -63
11-15-15 LEVEL -64
11-15-15 LEVEL -65
11-15-15 LEVEL -66
11-15-15 LEVEL -67
11-15-15 LEVEL -68
11-15-15 LEVEL -69
11-15-15 LEVEL -70
11-15-15 LEVEL -71
11-15-15 LEVEL -72
11-15-15 LEVEL -73
11-15-15 LEVEL -74
11-15-15 LEVEL -75
11-15-15 LEVEL -76
11-15-15 LEVEL -77
11-15-15 LEVEL -78
11-15-15 LEVEL -79
11-15-15 LEVEL -80
11-15-15 LEVEL -81
11-15-15 LEVEL -82
11-15-15 LEVEL -83
11-15-15 LEVEL -84
11-15-15 LEVEL -85
11-15-15 LEVEL -86
11-15-15 LEVEL -87
11-15-15 LEVEL -88
11-15-15 LEVEL -89
11-15-15 LEVEL -90
11-15-15 LEVEL -91
11-15-15 LEVEL -92
11-15-15 LEVEL -93
11-15-15 LEVEL -94
11-15-15 LEVEL -95
11-15-15 LEVEL -96
11-15-15 LEVEL -97
11-15-15 LEVEL -98
11-15-15 LEVEL -99
11-15-15 LEVEL -100

CHANDLER
 14501 Sycamore Blvd
 Houston, TX 77057
 San Antonio, TX 78232
 West Coast, CA 90404
 Midwest, IL 60631
 Florida, FL 33157
 Georgia, GA 30328
 South Texas, TX 77057

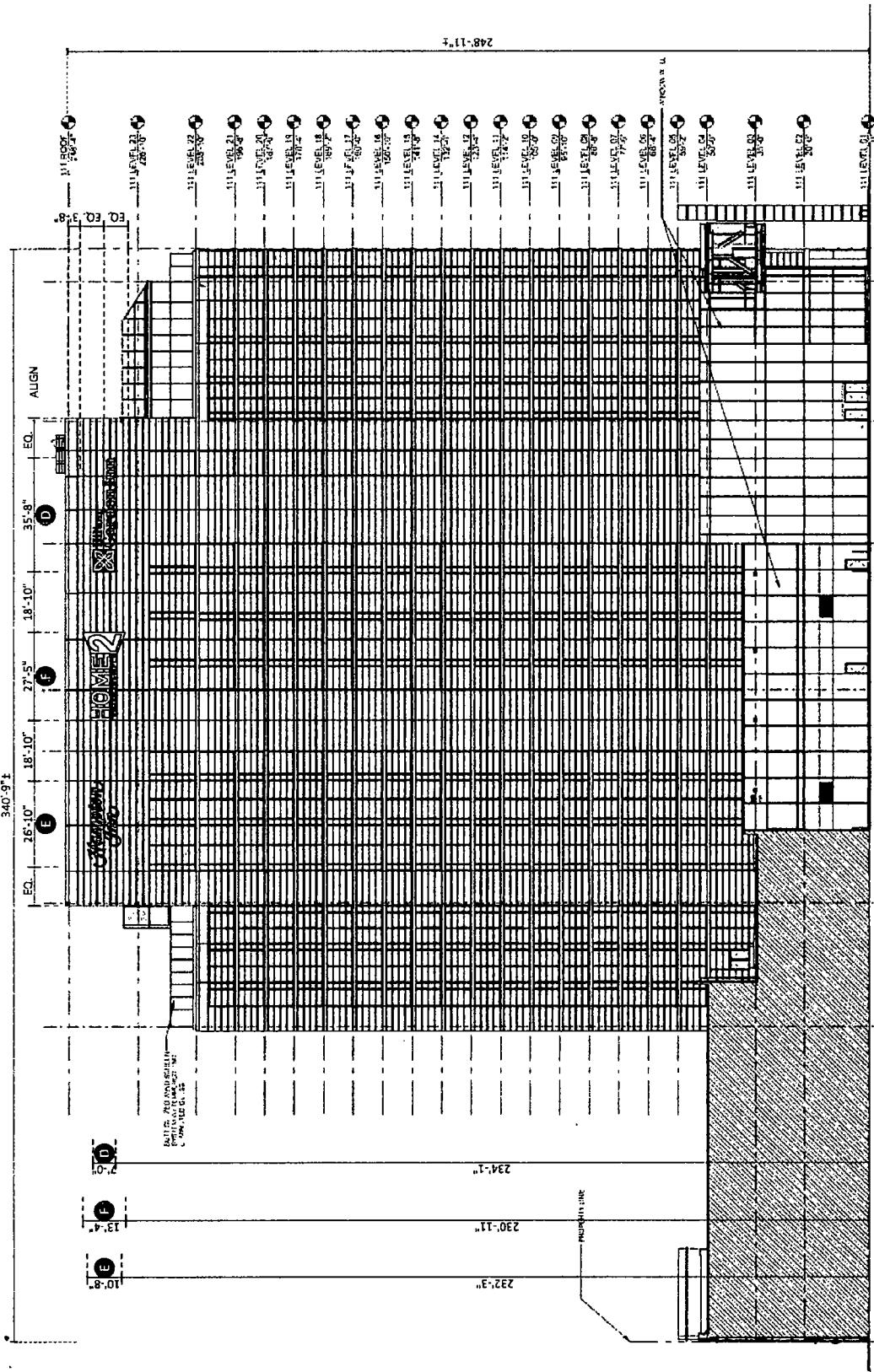
CHANDLER
 14501 Sycamore Blvd
 Houston, TX 77057
 San Antonio, TX 78232
 West Coast, CA 90404
 Midwest, IL 60631
 Florida, FL 33157
 Georgia, GA 30328
 South Texas, TX 77057

CHANDLER
 14501 Sycamore Blvd
 Houston, TX 77057
 San Antonio, TX 78232
 West Coast, CA 90404
 Midwest, IL 60631
 Florida, FL 33157
 Georgia, GA 30328
 South Texas, TX 77057

CHANDLER
 14501 Sycamore Blvd
 Houston, TX 77057
 San Antonio, TX 78232
 West Coast, CA 90404
 Midwest, IL 60631
 Florida, FL 33157
 Georgia, GA 30328
 South Texas, TX 77057

CHANDLER
 14501 Sycamore Blvd
 Houston, TX 77057
 San Antonio, TX 78232
 West Coast, CA 90404
 Midwest, IL 60631
 Florida, FL 33157
 Georgia, GA 30328
 South Texas, TX 77057

CHANDLER
 14501 Sycamore Blvd
 Houston, TX 77057
 San Antonio, TX 78232
 West Coast, CA 90404
 Midwest, IL 60631
 Florida, FL 33157
 Georgia, GA 30328
 South Texas, TX 77057



SCALE: 1/32"=1'-0"

SOUTH ELEVATION

248-117

Hilton

Design # 088835A/13

Sheet 5 of 9

Client: HILTON

Address: 123 EAST CERMAK ROAD CHICAGO, ILLINOIS

Account Rep: MSW / MAW

Designer: NAB

Date: 3/7/16

Approval / Date:

Client:

Sales:

Estimating:

Art:

Engineering:

Landed:

REVISION/DISC:

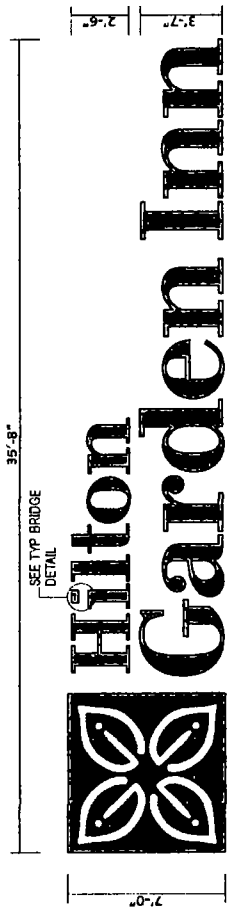
11-08-13-13 10:48:59 AM
 12-08-13-13 10:48:59 AM
 13-08-13-13 10:48:59 AM
 14-08-13-13 10:48:59 AM
 15-08-13-13 10:48:59 AM
 16-08-13-13 10:48:59 AM
 17-08-13-13 10:48:59 AM
 18-08-13-13 10:48:59 AM
 19-08-13-13 10:48:59 AM
 20-08-13-13 10:48:59 AM
 21-08-13-13 10:48:59 AM
 22-08-13-13 10:48:59 AM
 23-08-13-13 10:48:59 AM
 24-08-13-13 10:48:59 AM
 25-08-13-13 10:48:59 AM
 26-08-13-13 10:48:59 AM
 27-08-13-13 10:48:59 AM
 28-08-13-13 10:48:59 AM
 29-08-13-13 10:48:59 AM
 30-08-13-13 10:48:59 AM
 31-08-13-13 10:48:59 AM
 01-09-13-13 10:48:59 AM
 02-09-13-13 10:48:59 AM
 03-09-13-13 10:48:59 AM
 04-09-13-13 10:48:59 AM
 05-09-13-13 10:48:59 AM
 06-09-13-13 10:48:59 AM
 07-09-13-13 10:48:59 AM
 08-09-13-13 10:48:59 AM
 09-09-13-13 10:48:59 AM
 10-09-13-13 10:48:59 AM
 11-09-13-13 10:48:59 AM
 12-09-13-13 10:48:59 AM
 13-09-13-13 10:48:59 AM
 14-09-13-13 10:48:59 AM
 15-09-13-13 10:48:59 AM
 16-09-13-13 10:48:59 AM
 17-09-13-13 10:48:59 AM
 18-09-13-13 10:48:59 AM
 19-09-13-13 10:48:59 AM
 20-09-13-13 10:48:59 AM
 21-09-13-13 10:48:59 AM
 22-09-13-13 10:48:59 AM
 23-09-13-13 10:48:59 AM
 24-09-13-13 10:48:59 AM
 25-09-13-13 10:48:59 AM
 26-09-13-13 10:48:59 AM
 27-09-13-13 10:48:59 AM
 28-09-13-13 10:48:59 AM
 29-09-13-13 10:48:59 AM
 30-09-13-13 10:48:59 AM
 01-10-13-13 10:48:59 AM
 02-10-13-13 10:48:59 AM
 03-10-13-13 10:48:59 AM
 04-10-13-13 10:48:59 AM
 05-10-13-13 10:48:59 AM
 06-10-13-13 10:48:59 AM
 07-10-13-13 10:48:59 AM
 08-10-13-13 10:48:59 AM
 09-10-13-13 10:48:59 AM
 10-10-13-13 10:48:59 AM
 11-10-13-13 10:48:59 AM
 12-10-13-13 10:48:59 AM
 13-10-13-13 10:48:59 AM
 14-10-13-13 10:48:59 AM
 15-10-13-13 10:48:59 AM
 16-10-13-13 10:48:59 AM
 17-10-13-13 10:48:59 AM
 18-10-13-13 10:48:59 AM
 19-10-13-13 10:48:59 AM
 20-10-13-13 10:48:59 AM
 21-10-13-13 10:48:59 AM
 22-10-13-13 10:48:59 AM
 23-10-13-13 10:48:59 AM
 24-10-13-13 10:48:59 AM
 25-10-13-13 10:48:59 AM
 26-10-13-13 10:48:59 AM
 27-10-13-13 10:48:59 AM
 28-10-13-13 10:48:59 AM
 29-10-13-13 10:48:59 AM
 30-10-13-13 10:48:59 AM
 31-10-13-13 10:48:59 AM
 01-11-13-13 10:48:59 AM
 02-11-13-13 10:48:59 AM
 03-11-13-13 10:48:59 AM
 04-11-13-13 10:48:59 AM
 05-11-13-13 10:48:59 AM
 06-11-13-13 10:48:59 AM
 07-11-13-13 10:48:59 AM
 08-11-13-13 10:48:59 AM
 09-11-13-13 10:48:59 AM
 10-11-13-13 10:48:59 AM
 11-11-13-13 10:48:59 AM
 12-11-13-13 10:48:59 AM
 13-11-13-13 10:48:59 AM
 14-11-13-13 10:48:59 AM
 15-11-13-13 10:48:59 AM
 16-11-13-13 10:48:59 AM
 17-11-13-13 10:48:59 AM
 18-11-13-13 10:48:59 AM
 19-11-13-13 10:48:59 AM
 20-11-13-13 10:48:59 AM
 21-11-13-13 10:48:59 AM
 22-11-13-13 10:48:59 AM
 23-11-13-13 10:48:59 AM
 24-11-13-13 10:48:59 AM
 25-11-13-13 10:48:59 AM
 26-11-13-13 10:48:59 AM
 27-11-13-13 10:48:59 AM
 28-11-13-13 10:48:59 AM
 29-11-13-13 10:48:59 AM
 30-11-13-13 10:48:59 AM
 01-12-13-13 10:48:59 AM
 02-12-13-13 10:48:59 AM
 03-12-13-13 10:48:59 AM
 04-12-13-13 10:48:59 AM
 05-12-13-13 10:48:59 AM
 06-12-13-13 10:48:59 AM
 07-12-13-13 10:48:59 AM
 08-12-13-13 10:48:59 AM
 09-12-13-13 10:48:59 AM
 10-12-13-13 10:48:59 AM
 11-12-13-13 10:48:59 AM
 12-12-13-13 10:48:59 AM
 13-12-13-13 10:48:59 AM
 14-12-13-13 10:48:59 AM
 15-12-13-13 10:48:59 AM
 16-12-13-13 10:48:59 AM
 17-12-13-13 10:48:59 AM
 18-12-13-13 10:48:59 AM
 19-12-13-13 10:48:59 AM
 20-12-13-13 10:48:59 AM
 21-12-13-13 10:48:59 AM
 22-12-13-13 10:48:59 AM
 23-12-13-13 10:48:59 AM
 24-12-13-13 10:48:59 AM
 25-12-13-13 10:48:59 AM
 26-12-13-13 10:48:59 AM
 27-12-13-13 10:48:59 AM
 28-12-13-13 10:48:59 AM
 29-12-13-13 10:48:59 AM
 30-12-13-13 10:48:59 AM
 31-12-13-13 10:48:59 AM

CHANDLER SIGNS

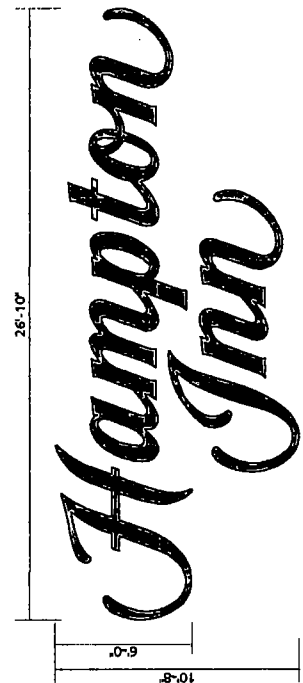
chandlerSigns.com

San Antonio 2101 S. W. Loop, Suite 100, San Antonio, TX 78228
 San Diego 1155 La Jolla Village Drive, San Diego, CA 92161
 West Coast 10000 Wilshire Blvd, Suite 100, Beverly Hills, CA 90210
 Midwest US 200 N. LaSalle St., Suite 200, Chicago, IL 60601
 Florida 11111 W. Broward Blvd., Suite 100, Fort Lauderdale, FL 33304
 Georgia 1000 Peachtree St., Suite 100, Atlanta, GA 30309
 South Texas 10000 Wilshire Blvd, Suite 100, Houston, TX 77056
 This drawing is the property of Chandler Signs, Inc. and is not to be reproduced or used in any way without the written permission of Chandler Signs, Inc.

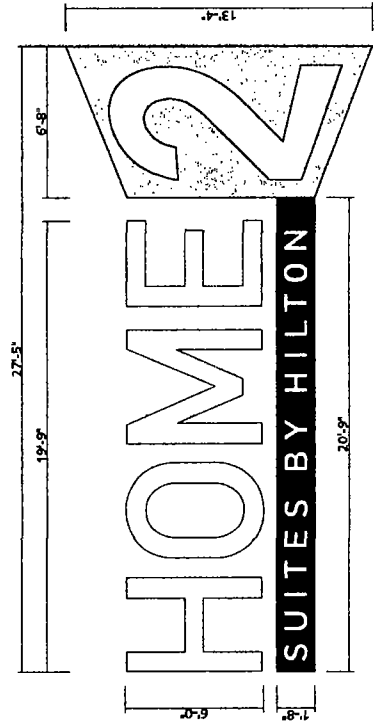
FINAL ELECTRICAL CONNECTION BY CUSTOMER



D FACE-LIT CHANNEL LETTERS
 (1) SET REQUIRED - MANUFACTURE & INSTALL
 SCALE: 3/16" = 1'-0"
 248 SQ FT



E CHANNEL LETTER DISPLAY
 (1) SET REQUIRED - MANUFACTURE & INSTALL
 SCALE: 3/16" = 1'-0"
 285 SQ FT



F LETTER/LOGO DETAILS
 (1) SET REQUIRED - MANUFACTURE & INSTALL
 SCALE: 3/16" = 1'-0"
 367 SQ FT