



# City of Chicago



O2015-503

Office of the City Clerk

## Document Tracking Sheet

<b>Meeting Date:</b>	1/21/2015
<b>Sponsor(s):</b>	Reilly (42)
<b>Type:</b>	Ordinance
<b>Title:</b>	Awning(s) for Delaware Place Bank
<b>Committee(s) Assignment:</b>	Committee on Transportation and Public Way

ORDINANCE  
DELAWARE PLACE BANK  
Acct. No. 7391 - 1  
Permit No. 1116267

*Be It Ordained by the City Council of the City of Chicago:*

SECTION 1. Permission and authority are hereby given and granted to DELAWARE PLACE BANK, upon the terms and subject to the conditions of this ordinance to maintain and use, as now constructed, one (1) Awning(s) projecting over the public right-of-way adjacent to its premises known as 190 E. Delaware Pl..

Said Awning(s) at E.Delaware measure(s):

One (1) at thirteen point one (13.1) feet in length, and sixteen point six (16.6) feet in width for a total of two hundred seventeen point four six (217.46) square feet.

The location of said privilege shall be as shown on prints kept on file with the Department of Business Affairs and Consumer Protection and the Office of the City Clerk.

Said privilege shall be constructed in accordance with plans and specifications approved by the Zoning Department - Signs.

This grant of privilege in the public way shall be subject to the provisions of Section 10-28-015 and all other required provisions of the Municipal Code of Chicago.

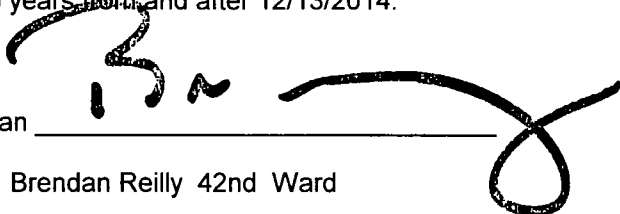
The grantee shall pay to the City of Chicago as compensation for the privilege #1116267 herein granted the sum of fifty (\$50.00) per annum in advance.

A 25% penalty will be added for payments received after due date.

The permit holder agrees to hold the City of Chicago harmless for any damage, relocation or replacement costs associated with damage, relocation or removal of private property caused by the City performing work in the public way.

Authority herein given and granted for a period of five (5) years from and after 12/13/2014.

Alderman \_\_\_\_\_



Brendan Reilly 42nd Ward



Delaware Place Bank  
 180 East Delaware Place  
 Chicago, IL 60611  
 Studio 185 - 107  
 July 28, 2000

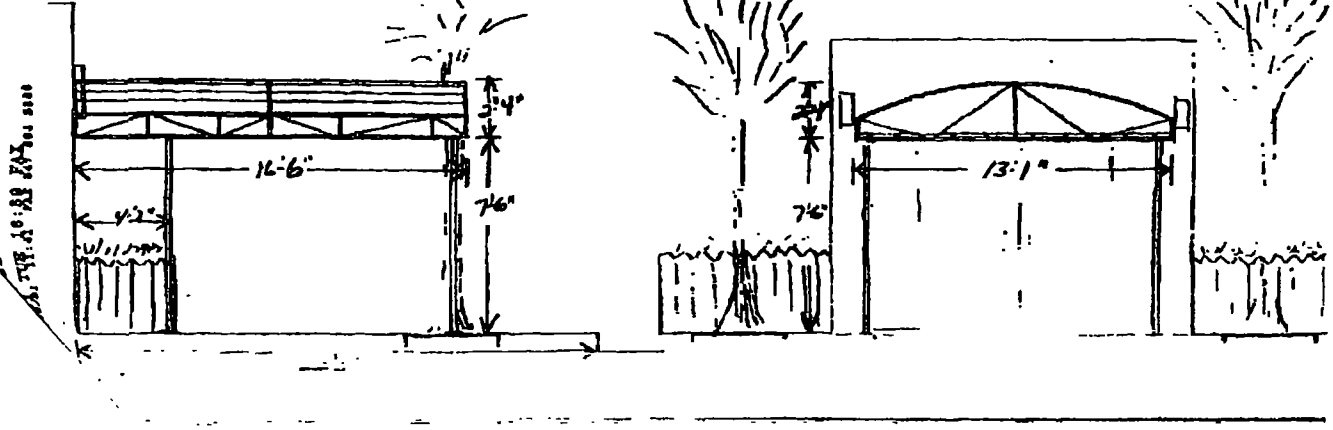
Frame made in sections of welded 1"x2" square tubing, 1"x1" square and 3/4" round galvanized steel tubing with welds ground primed and painted to match the tubing. Mounted to the building and the cement walk with 2"x5/8" lag bolts and 4"x3/8" lag bolts. Using Corbulara material in a color not yet determined. Unhappy to articulate entire cavity of canopy. Support posts to have stainless steel sleeves and flanges to cover all posts.

*James W. Aldrich* 7/20/01  
 Approved as Designed Date

EVANSION AWNING

End View

Front View



180 EAST DELAWARE PLACE  
 CHICAGO, ILL. 60611