



# Office of the City Clerk



O2013-1169

Office of the City Clerk

## City Council Document Tracking Sheet

<b>Meeting Date:</b>	2/13/2013
<b>Sponsor(s):</b>	Reilly, Brendan (42)
<b>Type:</b>	Ordinance
<b>Title:</b>	Grant(s) of privilege in public way for Corner Bakery Cafe - light fixture
<b>Committee(s) Assignment:</b>	Committee on Transportation and Public Way

ORDINANCE  
CORNER BAKERY CAFE  
Acct. No. 298727 - 14  
Permit No. 1104341

*Be It Ordained by the City Council of the City of Chicago:*

SECTION 1. Permission and authority are hereby given and granted to CORNER BAKERY CAFE, upon the terms and subject to the conditions of this ordinance to maintain and use, as now constructed, ten (10) Light Fixture(s) projecting over the public right-of-way adjacent to its premises known as 35 E. Monroe St..

Said Light Fixture(s) at E. Monroe Street measure(s):

Five (5) at one (1) foot in length, two (2) feet in width and sixteen point nine two (16.92) feet above grade level.

Said Light Fixture(s) at S. Wabash Avenue measure(s):

Five (5) at one (1) foot in length, two (2) feet in width and sixteen point eight three (16.83) feet above grade level.

The location of said privilege shall be as shown on prints kept on file with the Department of Business Affairs and Consumer Protection and the Office of the City Clerk.

Said privilege shall be constructed in accordance with plans and specifications approved by the Department of Transportation (Division of Project Development).

This grant of privilege in the public way shall be subject to the provisions of Section 10-28-015 and all other required provisions of the Municipal Code of Chicago.

The grantee shall pay to the City of Chicago as compensation for the privilege #1104341 herein granted the sum of one hundred twenty (\$120.00) per annum in advance.

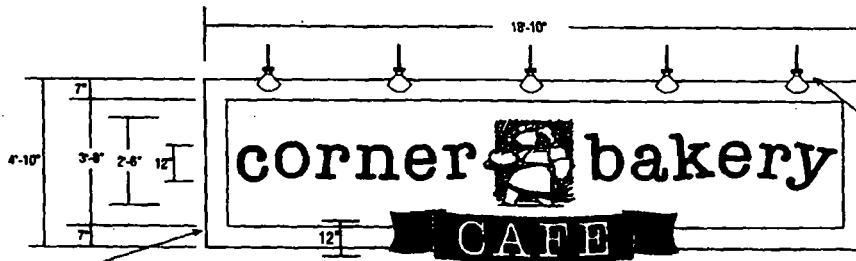
A 25% penalty will be added for payments received after due date.

The permit holder agrees to hold the City of Chicago harmless for any damage, relocation or replacement costs associated with damage, relocation or removal of private property caused by the City performing work in the public way.

Authority herein given and granted for a period of five (5) years from and after 01/09/2013.

Alderman

  
Brendan Reilly 42nd Ward

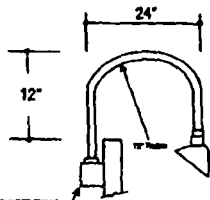


WOOD FRAME PAINTED ICI DULLX #365 FLAT "KAYAK BROWN".  
 5" DEEP ALUMINUM BKGD. PANEL PAINTED MATTHEWS #33A-2P  
 WHIPPED CREAM YELLOW W/ MATTE FINISH.  
 MEDIUM SIZE FORMED LEXAN DOUGHBOY W/ HAND  
 PAINTED MULTI-COLOR FINISH.

CBC-101-WS  
**WALL SIGN ELEVATION**  
 3/8" = 1'-0" (2) REQD

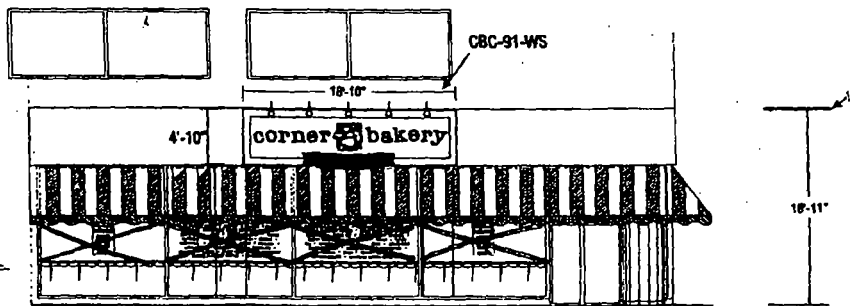
NOTE: GOOSENECK LIGHT FIXTURES MOUNTED TO TOP OF  
 SIGNS TO BE PURCHASED BY HEATH: GOOSENECK FIXTURE IS  
 "ABSOLUTE AD200-42PL-BLK-WL-P63-WTRB".  
 LAMP IS GE F420BX15PX27.

2" DEEP ALUMINUM REVERSE CHANNEL LETTERS W/ MATTE BLACK RETURNS  
 & FACES. LETTERS ARE NON-ILLUMINATED & ARE PIN-MOUNTED 2" OFF BKGD.  
 ROLLED .060 ALUMINUM MATTE BLACK RIBBON W/ F.C.O. WHITE ACRYLIC "CAFE"  
 LETTERS W/ 1" BRUSHED ALUMINUM TRIM CAP RETURNS. MOUNT TO RIBBON W/ CLIPS.



3/4" SINGLE REFLECTOR GOOSENECK  
 WALL BRACKET W/ RIGID CONDUIT  
 & CAST WALL PLATE - MOUNTS TO  
 RACENRY BOX MOUNTED TO BACK  
 OF SIGN (BY HEATH)

**GOOSENECK MOUNTING DETAIL**  
 N.T.S.



**EXTERIOR ELEVATION**  
 1/8" = 1'-0"

Wabash Ave.