



# City of Chicago



Or2016-456

Office of the City Clerk

## Document Tracking Sheet

<b>Meeting Date:</b>	9/14/2016
<b>Sponsor(s):</b>	Reboyra (30)
<b>Type:</b>	Order
<b>Title:</b>	Issuance of permits for sign(s)/signboard(s) at 3934 W Diversey Ave - south elevation
<b>Committee(s) Assignment:</b>	Committee on Zoning, Landmarks and Building Standards

Committee on Zoning, Landmarks  
and Building Standards  
City Council Meeting  
Alderman Ariel Reboyras  
Sign Order

ORDERED, that the Commissioner of Buildings is hereby directed to issue a sign permit to:

REAL NEON INC.  
113 W. OFFICIAL  
ADDISON, IL 60101

For the erection of a sign/signboard over 24 feet in height and/or over 100 square feet (in area of one face) at:

BINNY'S BEVERAGE DEPOT  
3934 W. DIVERSEY AVE.  
CHICAGO, IL 60647

Dimensions: length 22'-4" height 8'-4"

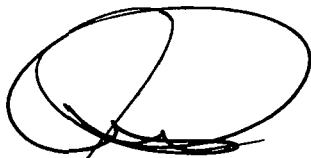
Height above grade/roof to top of sign 16'

Total Square Foot Area 186

Elevation: SOUTH

Permit #100652125

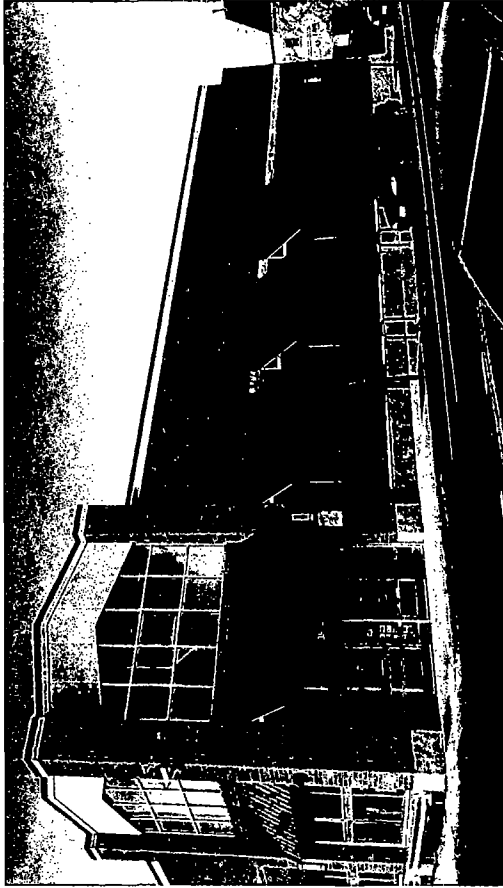
Such sign shall comply with all applicable provisions of TITLE 17 of the Chicago Zoning Ordinance and all other applicable provisions of the Municipal Code of the City of Chicago governing the construction and maintenance of outdoor signs, signboards and structures.



Alderman Ariel Reboyras  
Ward 30

1 of 3

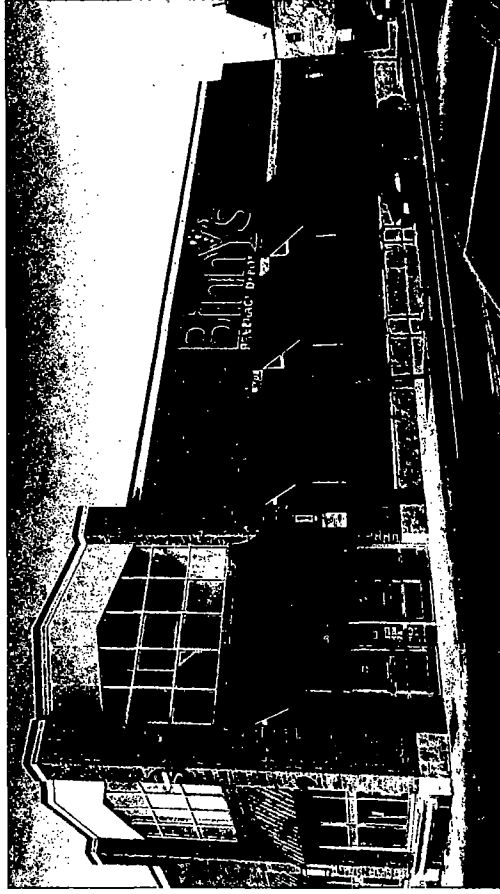
9/12/16



## Existing


### Southern sign location:

- 16ft from grade to the bottom of sign.
- 24.25ft to top of sign.
- Directly mounted to facade.
- 59' - Distance from left edge of sign to Southwest corner.
- Centered in signable area.



## Proposed

Southern frontage: 95ft

Binny's Beverage Depot 3954 W Diversey Ave, Chicago, IL 60647		APPROVED BY
SCALE	NTS	 352 LEXINGTON DR, BUFFALO GROVE, ILLINOIS 60089 PHONE: 847-215-1535 FAX: 847-215-1574
DATE	April 8, 2016	
DRAWING #	4014C	

B = 77.5"  
Y = 80.5"  
Beverage Depot = 12.5"

267.75 in



184 sq. ft. Channel letter sign. Directly mounted to  
Southern facade of building.

### Colors

Acrylic Faces S&G 3RK 32 Red  
5" Returns Black  
Trim Caps Black  
LED Red/White  
Bubbles Digital Print

Sign hooked up to existing dedicated 20amp line  
All letters to display U.L labels

Binny's Beverage Depot

3934 W Diversy Ave, Chicago, IL 60647

APPROVED BY

SCALE  
NTS

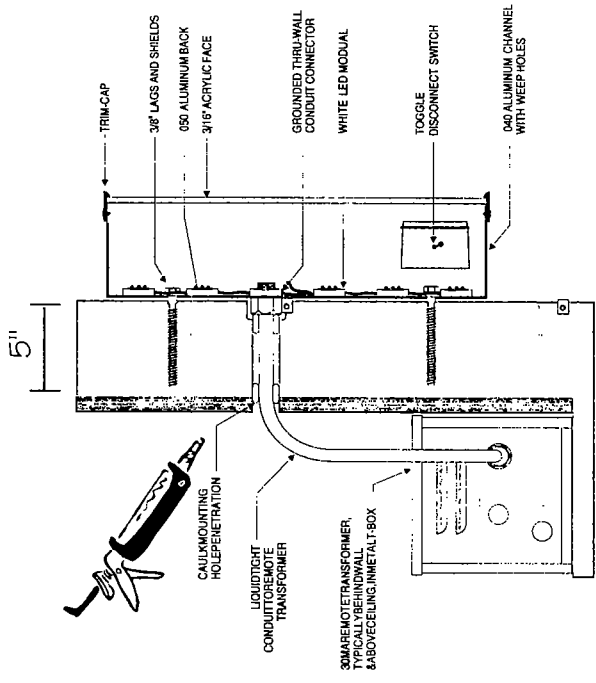
DATE  
April 8, 2016

DRAWING #  
4014B

 **Signarama**  
The way to grow your business.

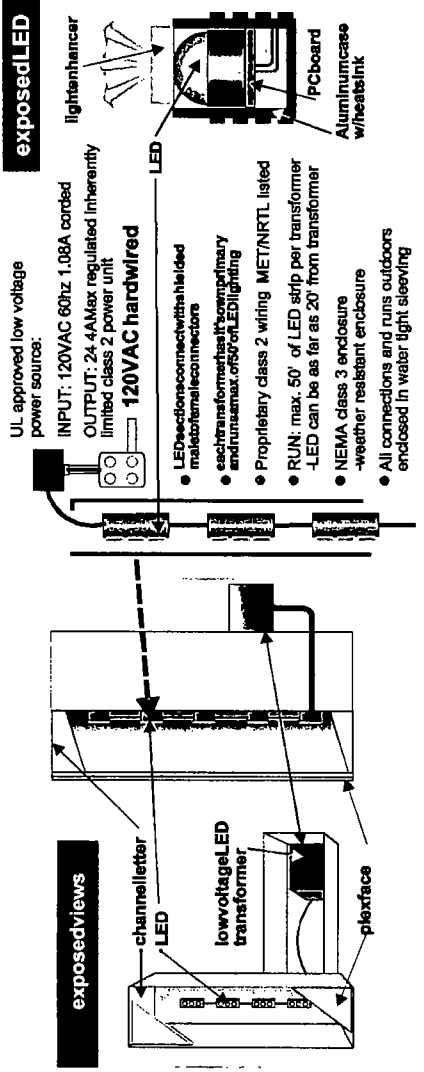
352 LEXINGTON DR, BUFFALO GROVE, ILLINOIS 60089

PHONE: 847-215-1535 FAX: 847-215-1574



Typical U.L. Channel Letters with LED Illumination

Not to scale



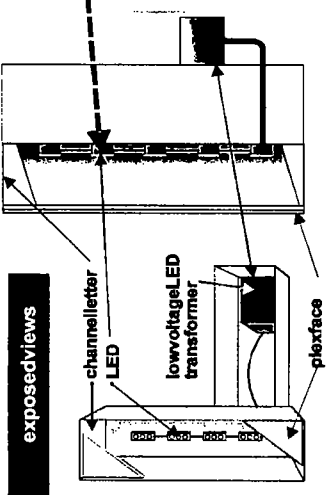
TYPICAL LED DETAIL - CHANNEL LETTER APPLICATION

not to scale

**exposed LED**

- UL approved low voltage power source:
- INPUT: 120VAC 60hz 1.08A corded
- OUTPUT: 24.4A Max regulated inherently limited class 2 power unit
- 120VAC hardwired**
- LEDs are connected with shielded multi-conductor cables
- each transformer has its own primary and runs max. of 50' of LED lighting
- Proprietary class 2 wiring MET/NRTL listed
- RUN: max. 50' of LED strip per transformer -LED can be as far as 20' from transformer
- NEMA class 3 enclosure -weather resistant enclosure
- All connections and runs outdoors enclosed in water tight sleeving

**exposed views**



Sign hooked up to existing dedicated 20amp line  
All letters to display U.L labels

Birny's Beverage Depot 3934 W Diversey Ave, Chicago, IL 60647		APPROVED BY
SCALE	NTS	
DATE	April 8, 2016	
DRAWING #	4014A	
<b>Signarama</b> The way to grow your business.		
352 LEXINGTON DR. BUFFALO GROVE, ILLINOIS 60089		
PHONE: 847-215-1535		FAX: 847-215-1574