



# City of Chicago



O2018-802

Office of the City Clerk

## Document Tracking Sheet

<b>Meeting Date:</b>	2/21/2018
<b>Sponsor(s):</b>	Reilly (42)
<b>Type:</b>	Ordinance
<b>Title:</b>	Grant(s) of privilege in public way for Corner Bakery Cafe - sign
<b>Committee(s) Assignment:</b>	Committee on Transportation and Public Way

Direct Intro

#42

ORDINANCE  
CORNER BAKERY CAFE  
Acct. No 298727 - 14  
Permit No. 1131127

*Be It Ordained by the City Council of the City of Chicago:*

SECTION 1. Permission and authority are hereby given and granted to CORNER BAKERY CAFE, upon the terms and subject to the conditions of this ordinance to maintain and use two (2) sign(s) projecting over the public right-of-way attached to its premises known as 35 E. Monroe St..

Said sign structure(s) measures as follows; along E. Monroe Street:

One (1) at eighteen point eight three (18.83) feet in length, four point eight three (4.83) feet in height and twelve (12) feet above grade level.

Said sign structure(s) measures as follows; along S. Wabash Avenue:

One (1) at eighteen point eight three (18.83) feet in length, four point eight three (4.83) feet in height and twelve point nine two (12.92) feet above grade level.

The location of said privilege shall be as shown on prints kept on file with the Department of Business Affairs and Consumer Protection and the Office of the City Clerk.

Said privilege shall be constructed in accordance with plans and specifications approved by the Department of Transportation (Division of Project Development) and Zoning Department - Signs.

This grant of privilege in the public way shall be subject to the provisions of Section 10-28-015 and all other required provisions of the Municipal Code of Chicago.

The grantee shall pay to the City of Chicago as compensation for the privilege #1131127 herein granted the sum of six hundred (\$600.00) per annum in advance.

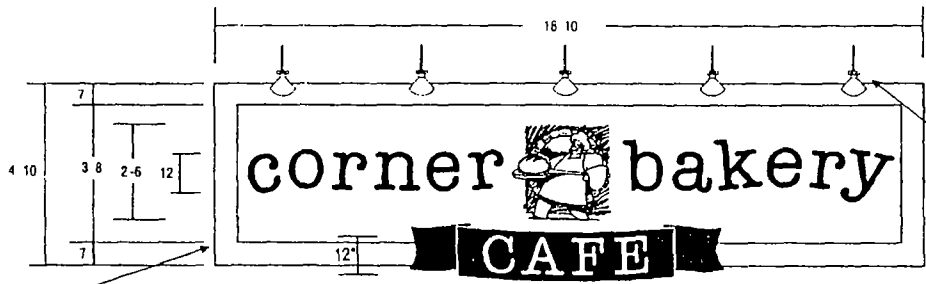
A 25% penalty will be added for payments received after due date.

The permit holder agrees to hold the City of Chicago harmless for any damage, relocation or replacement costs associated with damage, relocation or removal of private property caused by the City performing work in the public way.

Authority herein given and granted for a period of five (5) years from and after 01/09/2018.

Alderman \_\_\_\_\_

Brendan Reilly 42<sup>nd</sup> Ward



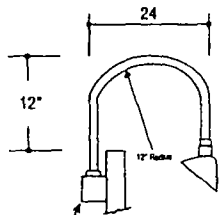
WOOD FRAME PAINTED ICI DULUX #355 FLAT "KAYAK BROWN"  
5 DEEP ALUMINUM BKGD. PANEL PAINTED MATTHEWS #33A 2P  
WHIPPED CREAM YELLOW W/ MATTE FINISH  
MEDIUM SIZE FORMED LEXAN DOUGHBOY W/ HAND  
PAINTED MULTI-COLOR FINISH

2 DEEP ALUMINUM REVERSE CHANNEL LETTERS W/ MATTE BLACK RETURNS  
& FACES. LETTERS ARE NON-ILLUMINATED & ARE PIN MOUNTED 2" OFF BKGD

ROLLED .090 ALUMINUM MATTE BLACK RIBBON W/ FC O WHITE ACRYLIC. CAFE  
LETTERS W/ 1" BRUSHED ALUMINUM TRIM CAP RETURNS, MOUNT TO RIBBON W/ CLIPS

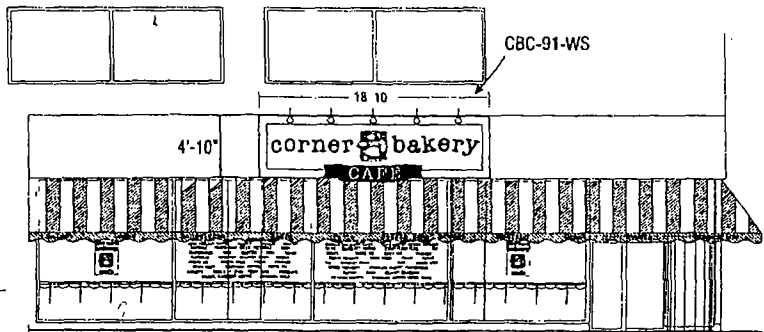
CBC 101 WS  
WALL SIGN ELEVATION  
3/8" = 1'-0" (2) REQ'D

NOTE: GOOSENECK LIGHT FIXTURES MOUNTED TO TOP OF  
SIGNS TO BE PURCHASED BY HEATH. GOOSENECK FIXTURE IS  
ABSOLUTE AD200-42PL BLK-WL-PG3-WTRB  
LAMP IS GE F42QBX15PX27 PER MEMO FROM  
BRINKER



3/4" SINGLE REFLECTOR GOOSENECK  
WALL BRACKET W/ RIGID CONDUIT  
& CAST WALL PLATE. MOUNTS TO  
RACEWAY BOX MOUNTED TO BACK  
OF SIGN (BY HEATH)

GOOSENECK MOUNTING DETAIL  
NTS



EXTERIOR ELEVATION  
1/8" = 1'-0"

WABASH AVE.