



City of Chicago



O2016-2071

Office of the City Clerk

Document Tracking Sheet

Meeting Date:	3/16/2016
Sponsor(s):	Burnett (27)
Type:	Ordinance
Title:	Grant(s) of privilege in public way for Express
Committee(s) Assignment:	Committee on Transportation and Public Way

ORDINANCE
Express
Acct. No. 374616 - 3
Permit No. 1120543

Be It Ordained by the City Council of the City of Chicago:

SECTION 1. Permission and authority are hereby given and granted to Express, upon the terms and subject to the conditions of this ordinance to maintain and use two (2) sign(s) projecting over the public right-of-way attached to its premises known as 913 W. North Ave..

Said sign structure(s) measures as follows; along W. North Avenue:
Two (2) at two point five (2.5) feet in length, one point two five (1.25) feet in height and seven (7) feet above grade level.

The location of said privilege shall be as shown on prints kept on file with the Department of Business Affairs and Consumer Protection and the Office of the City Clerk.

Said privilege shall be constructed in accordance with plans and specifications approved by the Department of Transportation (Division of Project Development) and Zoning Department - Signs.


This grant of privilege in the public way shall be subject to the provisions of Section 10-28-015 and all other required provisions of the Municipal Code of Chicago.

The grantee shall pay to the City of Chicago as compensation for the privilege #1120543 herein granted the sum of one hundred seventy-five (\$175.00) per annum in advance.

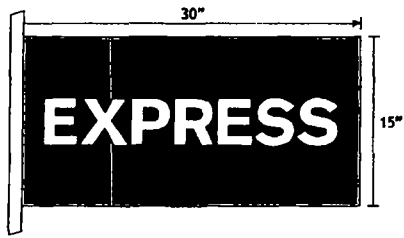
A 25% penalty will be added for payments received after due date.

The permit holder agrees to hold the City of Chicago harmless for any damage, relocation or replacement costs associated with damage, relocation or removal of private property caused by the City performing work in the public way.

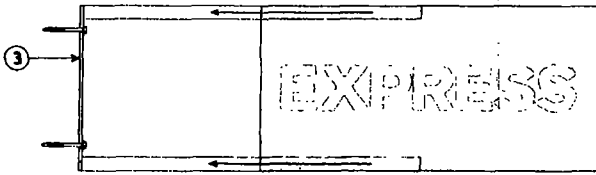
Authority herein given and granted for a period of five (5) years from and after Date of Passage.

Alderman 
Walter Burnett Jr. 27th Ward (

B BLADE SIGN - ELEVATION
Scale: 1 1/2" = 1' - 0"



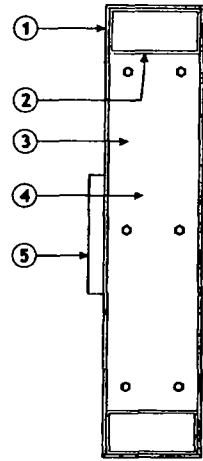
BLADE SIGN - INTERNAL DETAILS
Scale: N.T.S.



SIGN - DETAILS

- 1 15" x 30" x 3" FABRICATED ALUMINUM SIGN BOX PAINTED (T.B.D.)
- 2 FABRICATED ALUMINUM INTERNAL TUBE FRAME, SIGN BOX WILL SLIDE OVER FRAME AND SECURE WITH COUNTERSUNK SCREWS ALONG TOP RETURN
- 3 1/4" ALUMINUM MOUNTING PLATE WELDED TO END OF FRAME. FRAME MOUNTS FLUSH TO WALL WITH REQUIRED FASTENERS G.C. TO PROVIDE ADEQUATE BLOCKING
- 4 3/4" THICK ROUTED ACRYLIC LETTERS PAINTED MATTE WHITE AND APPLIED TO BOTH SIDES OF SIGN WITH TAPE AND SILICONE

BLADE SIGN - END VIEW
Scale: N.T.S.



COPY - DETAILS



**Ruggles
SIGN**

101 Kuhlman Blvd
PO Box 349
Versailles, KY 40383
859 879 1199



EXPRESS

Store
Space

NORTH AVENUE
CHICAGO, IL

CUSTOMER APPROVAL

Customer Signature	Date
Comp, Colors and Size	
RUGGLES SIGN COMPANY DOES NOT PROVIDE PRIMARY ELECTRICAL TO SIGN LOCATION RESPONSIBILITY OF OTHERS!	
This design is the exclusive property of Ruggles Sign Company and cannot be reproduced in whole or in part without their prior written approval.	
Submitted Date:	03/18/14
Plan Issue / Rev Date:	
Acct Rep:	Todd Johnson
Designer:	Jaye Williams

REVISIONS

r1:	r6:
r2:	r7:
r3:	r8:
r4:	r9:
r5:	r10:

EXP BLD30 cust

PAGE: 4