



Office of the Chicago City  
Clerk



O2011-5685

Office of the City Clerk

City Council Document Tracking Sheet

<b>Meeting Date:</b>	7/6/2011
<b>Sponsor(s):</b>	Burns, William D. (4)
<b>Type:</b>	Ordinance
<b>Title:</b>	Zoning Reclassification <b>Map</b> No. 10-D
<b>Committee(s) Assignment:</b>	<b>Committee</b> on Zoning, Landmarks and Building Standards

ORDINANCE

***BE IT ORDAINED BY THE CITY COUNCIL OF THE CITY OF CHICAGO:***

***SECTION 1.*** Title 17 of the Municipal Code of Chicago, the Chicago Zoning Ordinance, is hereby amended by changing all the B3-3 Community Shopping District and RM-5 Multi- Unit District symbols and indications as shown on Map No. 10-D in the area bounded by


South Lake Park Avenue; East 42<sup>nd</sup> Street; South Oakenwald Avenue; and East 43<sup>rd</sup> Street

to those of an RM-5 Multi-Unit **D**istrict and a corresponding use district is hereby established in the area above described.

***SECTION 2.*** This ordinance shall be in force and effect from and after its passage and due publication.

Common address of property: 4225 South Lake Park Avenue (4201-39 South Lake Park Avenue; 1101-29 East 42<sup>nd</sup> Street; 4200-40 South Oakenwald Avenue; and 1112-40 East 43<sup>rd</sup> Street)

Robinson Elementary School



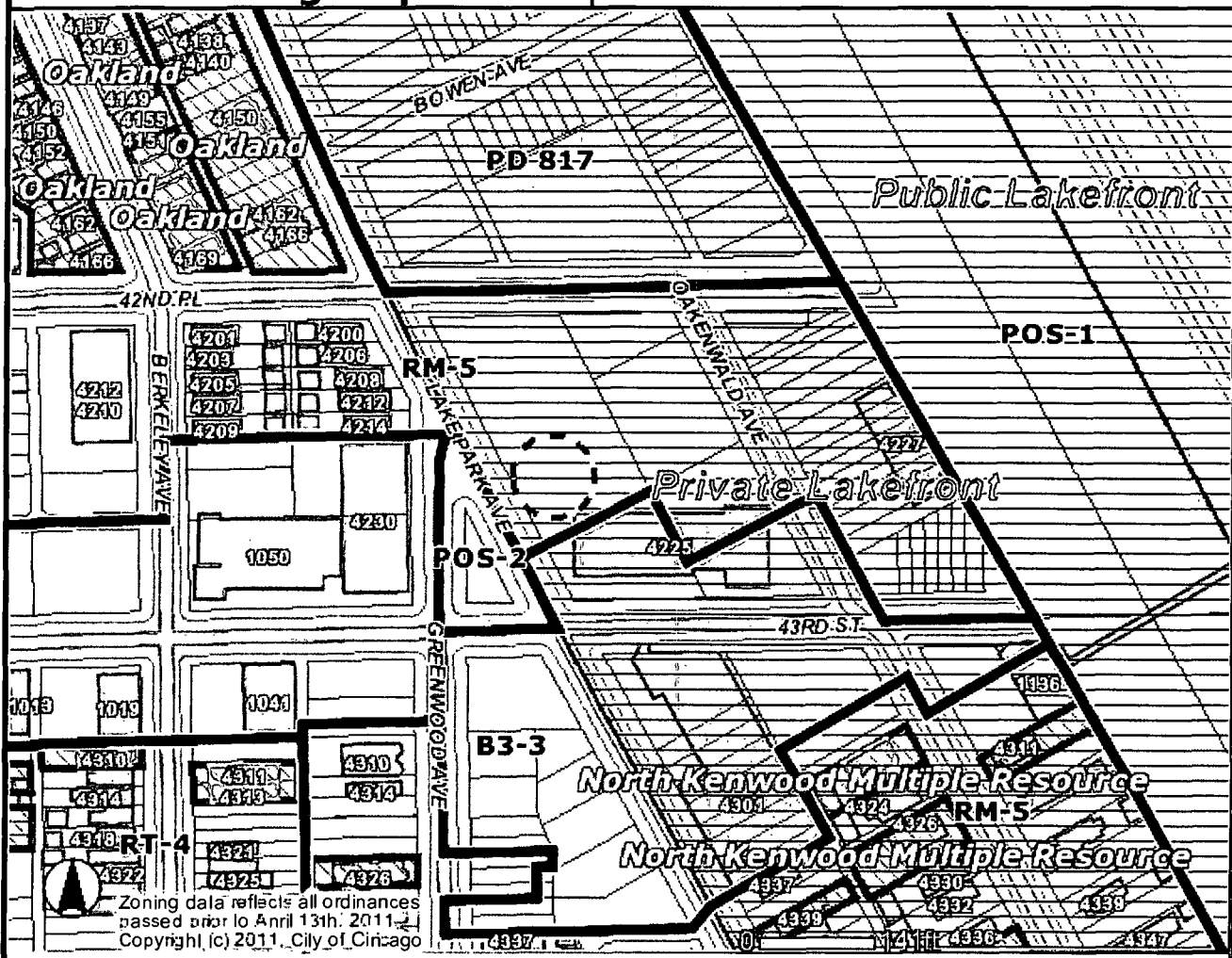
---

William Burns  
Alderman, 4<sup>th</sup> Ward

Robinson School

# Zoning Map

Created on: 6/8/2011 4:35 P.M.



Zoning data reflects all ordinances passed prior to April 13th, 2011.  
Copyright (c) 2011, City of Chicago

## Address

4225 S LAKE PARK AVE

### Zoning

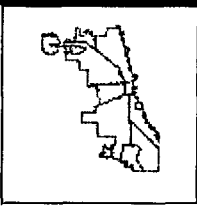
- Business
- Commercial
- Manufacturing
- Residential
- Planned Development
- Planned Manufacturing
- Downtown Core
- Downtown Service
- Downtown Mixed
- Downtown Residential
- Transportation
- Parks & Open Space
- Zoning Boundaries

### Historic Preservation

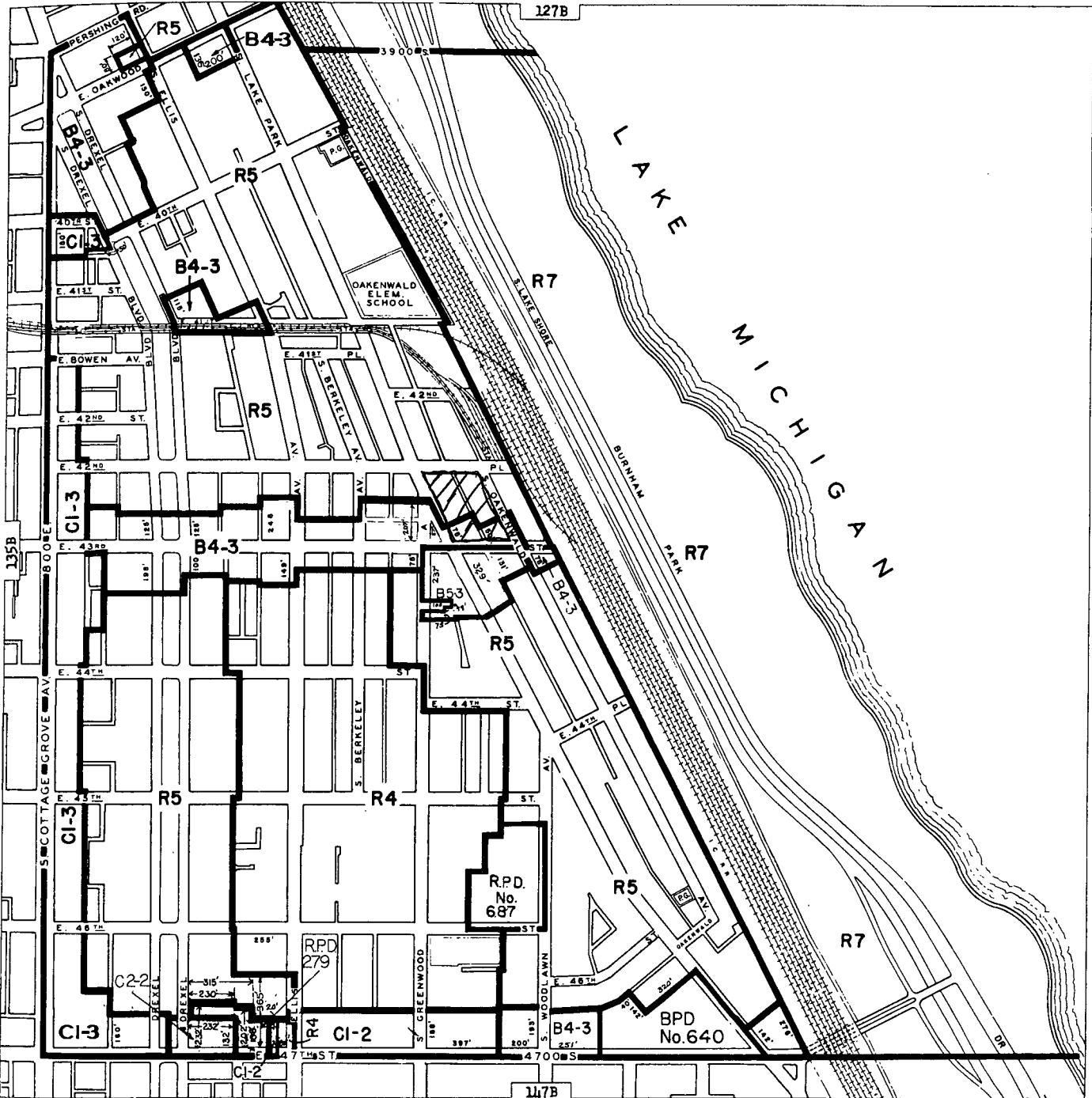
- CHICAGO LANDMARKS
- Chicago Landmarks
  - Landmark Districts
- Chicago Historic Resources Survey - Buildings subject to Demolition-Delay Ordinance
- Red
  - Orange
  - Forest Preserve
  - City Boundary

### Lakefront

- Lakefront
- Pedestrian Streets
- Buildings
- Parcels
- Streets
- Water
- Cemetery
- Municipalities



Information provided on the City of Chicago web site should not be used as a substitute for legal, accounting, real estate, business, tax, or other professional advice. The City of Chicago assumes no liability for any damages or loss of any kind that might arise from the use of, misuse of, or the inability to use the City web site and/or the materials contained on the web site. The City of Chicago also assumes no liability for improper or incorrect use of materials or information contained on its web site. All materials that appear on the City of Chicago web site are distributed and transmitted as is, without warranties of any kind, either express or implied, and subject to the terms and conditions stated in this disclaimer.



**RESIDENCE DISTRICTS**

- R1 SINGLE-FAMILY RESIDENCE DISTRICT
- R2 SINGLE-FAMILY RESIDENCE DISTRICT
- R3 GENERAL RESIDENCE DISTRICT
- R4 GENERAL RESIDENCE DISTRICT
- R5 GENERAL RESIDENCE DISTRICT
- R6 GENERAL RESIDENCE DISTRICT
- R7 GENERAL RESIDENCE DISTRICT
- R8 GENERAL RESIDENCE DISTRICT

**BUSINESS DISTRICTS**

- B1-1 TO B1-5 LOCAL RETAIL DISTRICTS
- B2-1 TO B2-5 RESTRICTED RETAIL DISTRICTS
- B3-1 TO B3-5 GENERAL RETAIL DISTRICTS
- B4-1 TO B4-5 RESTRICTED SERVICE DISTRICTS
- B5-1 TO B5-5 GENERAL SERVICE DISTRICTS
- B6-6 AND B6-7 RESTRICTED CENTRAL BUSINESS DISTRICTS
- B7-5 TO B7-7 GENERAL CENTRAL BUSINESS DISTRICTS

**COMMERCIAL DISTRICTS**

- CI-1 TO CI-5 RESTRICTED COMMERCIAL DISTRICTS
- C2-1 TO C2-5 GENERAL COMMERCIAL DISTRICTS
- C3-5 TO C3-7 COMMERCIAL-MANUFACTURING DISTRICTS
- C4 MOTOR FREIGHT TERMINAL DISTRICT

**MANUFACTURING DISTRICTS**

- M1-1 TO M1-5 RESTRICTED MANUFACTURING DISTRICTS
- M2-1 TO M2-5 GENERAL MANUFACTURING DISTRICTS
- M3-1 TO M3-5 HEAVY MANUFACTURING DISTRICT

FOR USE AND BULK REGULATIONS, RESIDENCE DISTRICTS, SEE ARTICLE 7.  
 FOR USE AND BULK REGULATIONS, BUSINESS DISTRICTS, SEE ARTICLE 8.  
 FOR USE AND BULK REGULATIONS, COMMERCIAL DISTRICTS, SEE ARTICLE 9.  
 FOR USE AND BULK REGULATIONS, MANUFACTURING DISTRICTS, SEE ARTICLE 10.

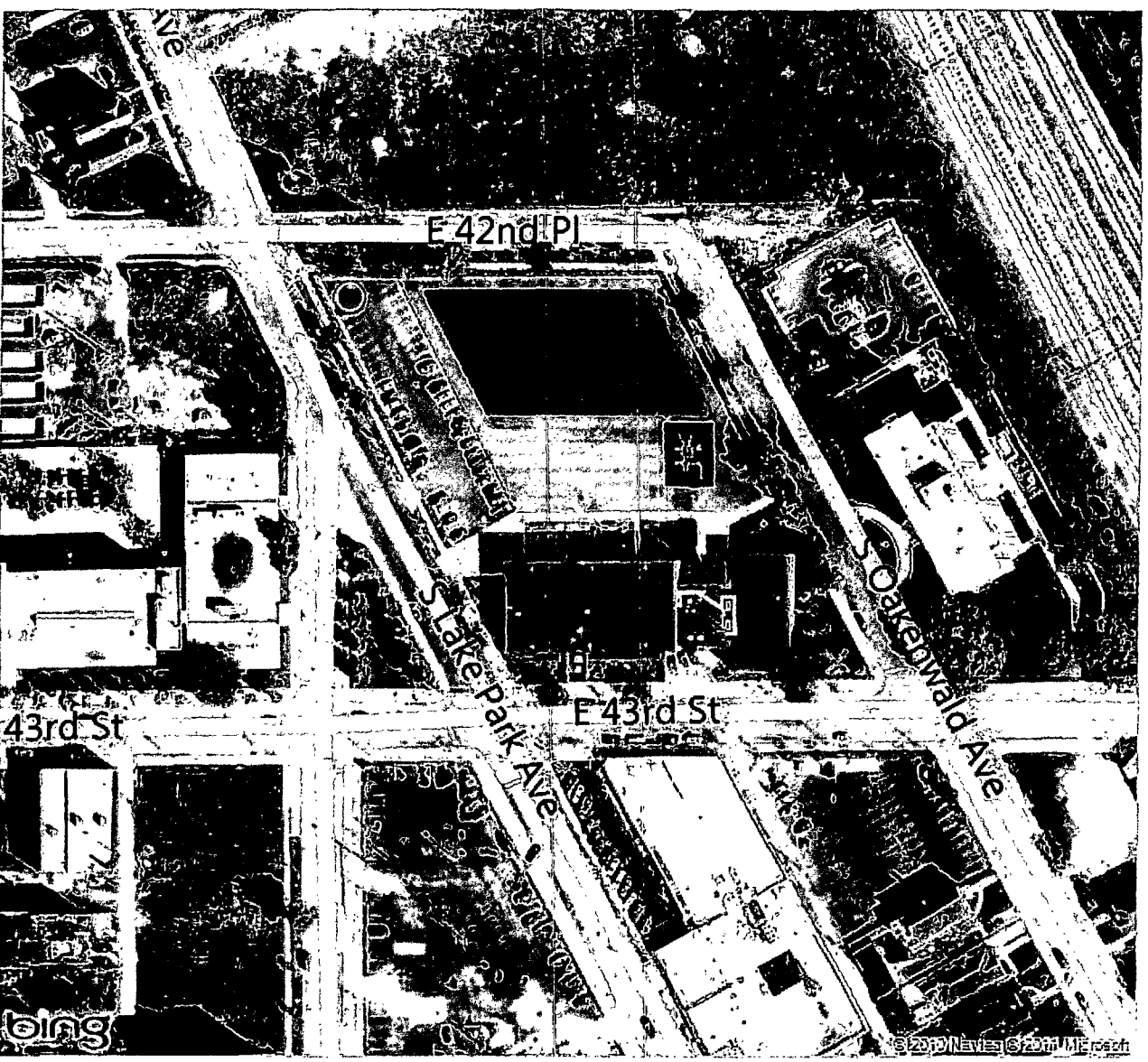



Bing Maps

4225 S Lake Park Ave, Chicago, IL 60653-3064

My Notes  
*Robinson*

FREE! Use Bing 411 to find movies, businesses & more: 800-BING-411



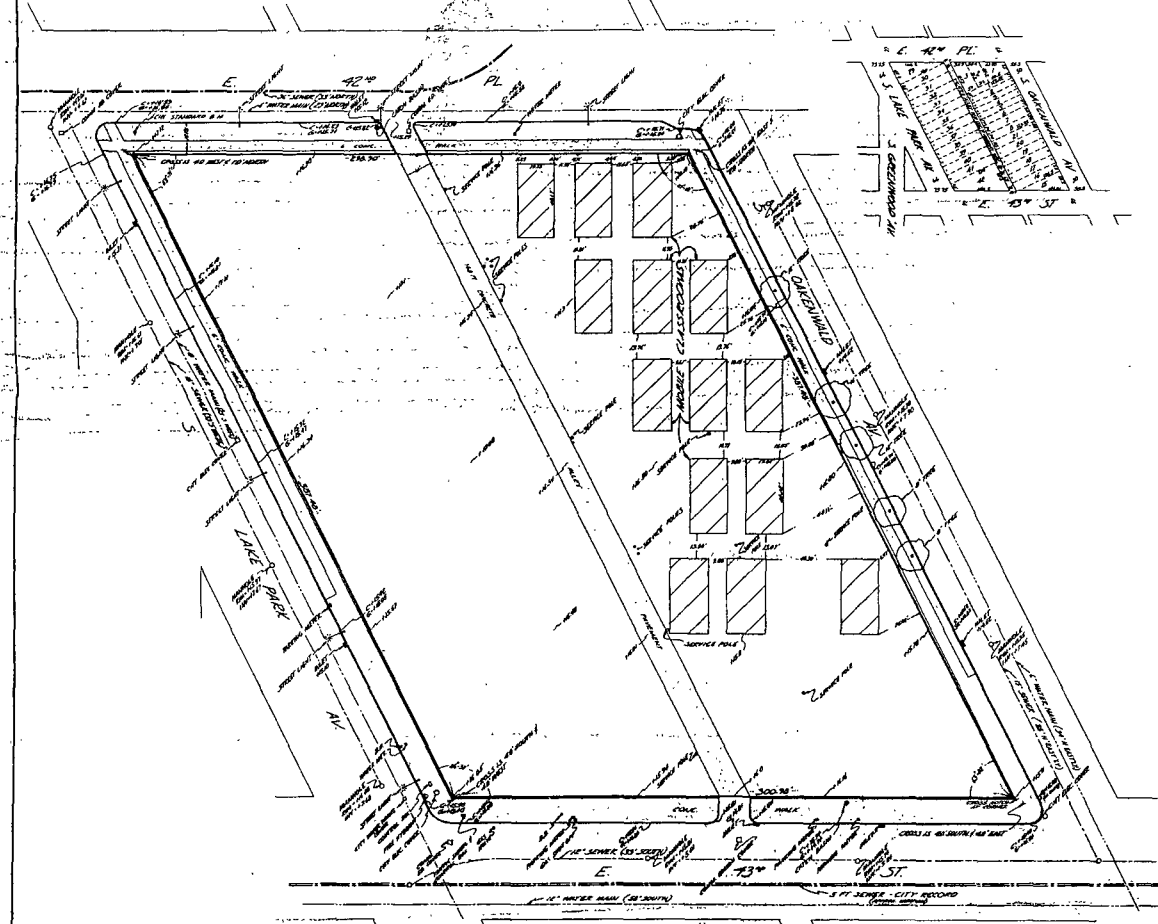
 Bird's eye view maps can't be printed, so another map view has been substituted.

ROBINSON

# PLAT OF SURVEY EMMET KENNEDY & CO.

113 LEXINGTON STREET CHICAGO, ILLINOIS 60602  
Telephone FE 2-2065

LOTS 15 TO 21, BOTH INCLUSIVE, AND LOTS 27 TO 40, BOTH INCLUSIVE, IN BLOCK F IN REBUNDION OF BLOCKS 1 AND 2 IN REFORM SCHOOL PROPERTY, BEING THE SOUTH 25 ACRES OF THE NORTHWEST QUARTER OF SECTION 2, TOWNSHIP 38 NORTH, RANGE 14, EAST OF THE THIRD PRINCIPAL MERIDIAN, IN COOK COUNTY, ILLINOIS.  
ALSO  
LOTS 1 TO 8, BOTH INCLUSIVE, IN PORTER'S REBUNDION OF LOTS 22 TO 27, BOTH INCLUSIVE, IN BLOCK 1 IN REBUNDION OF BLOCKS 1 AND 2 IN REFORM SCHOOL PROPERTY, BEING THE SOUTH 25 ACRES OF THE NORTHWEST QUARTER OF SECTION 2, TOWNSHIP 38 NORTH, RANGE 14, EAST OF THE THIRD PRINCIPAL MERIDIAN, IN COOK COUNTY, ILLINOIS.  
ALSO  
LOTS 1 TO 3, BOTH INCLUSIVE, IN FRENCH'S SUBDIVISION OF LOT 28 IN BLOCK 1 IN REBUNDION OF BLOCKS 1 AND 2 IN REFORM SCHOOL PROPERTY, BEING THE SOUTH 25 ACRES OF THE NORTHWEST QUARTER OF SECTION 2, TOWNSHIP 38 NORTH, RANGE 14, EAST OF THE THIRD PRINCIPAL MERIDIAN, IN COOK COUNTY, ILLINOIS AND INDICATED ALLEY.



Surveyed by James Kennedy  
for Emmet Kennedy & Co.

NOTE: HALF INCHES AND CURVES RADIUS

STATE OF ILLINOIS  
COUNTY OF COOK  
EMMET KENNEDY & CO. HEREBY CERTIFY THAT  
A SURVEY HAS BEEN MADE BY AND UNDER THE SUPERVISION OF AN  
ILLINOIS LAND SURVEYOR OF THE PROPERTY DESCRIBED ABOVE  
AND THAT THE PLAT HEREBY SUBMITTED IS A CORRECT REPRESENTATION  
OF SAID SURVEY.

CHICAGO August 19th A.D. 1923  
EMMET KENNEDY & CO.  
James Kennedy  
Surveyor