



# City of Chicago



Or2018-363

Office of the City Clerk

## Document Tracking Sheet

<b>Meeting Date:</b>	7/25/2018
<b>Sponsor(s):</b>	Burnett (27)
<b>Type:</b>	Order
<b>Title:</b>	Issuance of permits for sign(s)/signboard(s) at 1950 W Polk St - north elevation
<b>Committee(s) Assignment:</b>	Committee on Zoning, Landmarks and Building Standards

CITY COUNCIL  
COMMITTEE ON ZONING, LANDMARKS AND BUILDING STANDARDS

COUNCIL ORDER

RE: Approval of sign over 100 square feet in area or over 24 feet above grade

ORDERED, that the City Council hereby approves the following sign application submitted by:

Applicant\*: Cook County Bureau of Asset Management

(\* The Applicant is the owner of the real property or the business tenant of the real property. Do not list the sign contractor, sign erector, sign company or advertising entity in the above space.)

This Order approves the following sign in accordance with Municipal Code of Chicago Section 13-20-680:

Address of Sign: 1950 W Polk St Chicago, IL 60612

Zoning District: PD-30

DOB Sign Permit Application #: 100753167

Sign Details:

1. On-premise  OR Off-premise
2. Static sign  OR Dynamic-image display sign
3. Number of sign faces 1
4. Projecting over the public way No (Yes or No) If yes, Public Way Use #: \_\_\_\_\_
5. Dimensions: Length 52 feet 8 inches Height 17 feet 4 inches  
Total square feet in area: 913 feet \_\_\_\_\_ inches
6. Height above grade: 130 feet 4 inches
7. Elevation (side of building or lot where the sign will be erected): North
8. Name of Sign Contractor/Erector: South Water Signs / Adrian Mois

To be legal, such sign shall comply with all provisions of Title 17 of the Chicago Municipal Code ("Zoning Ordinance") and all other provisions of the Municipal Code governing the permitting, construction and maintenance and removal of signs and sign structures. Failure of the applicant and the applicant's successors to comply shall be grounds for invalidation or revocation of the sign permit.

Walter Buttz  
Alderman

27th  
Ward

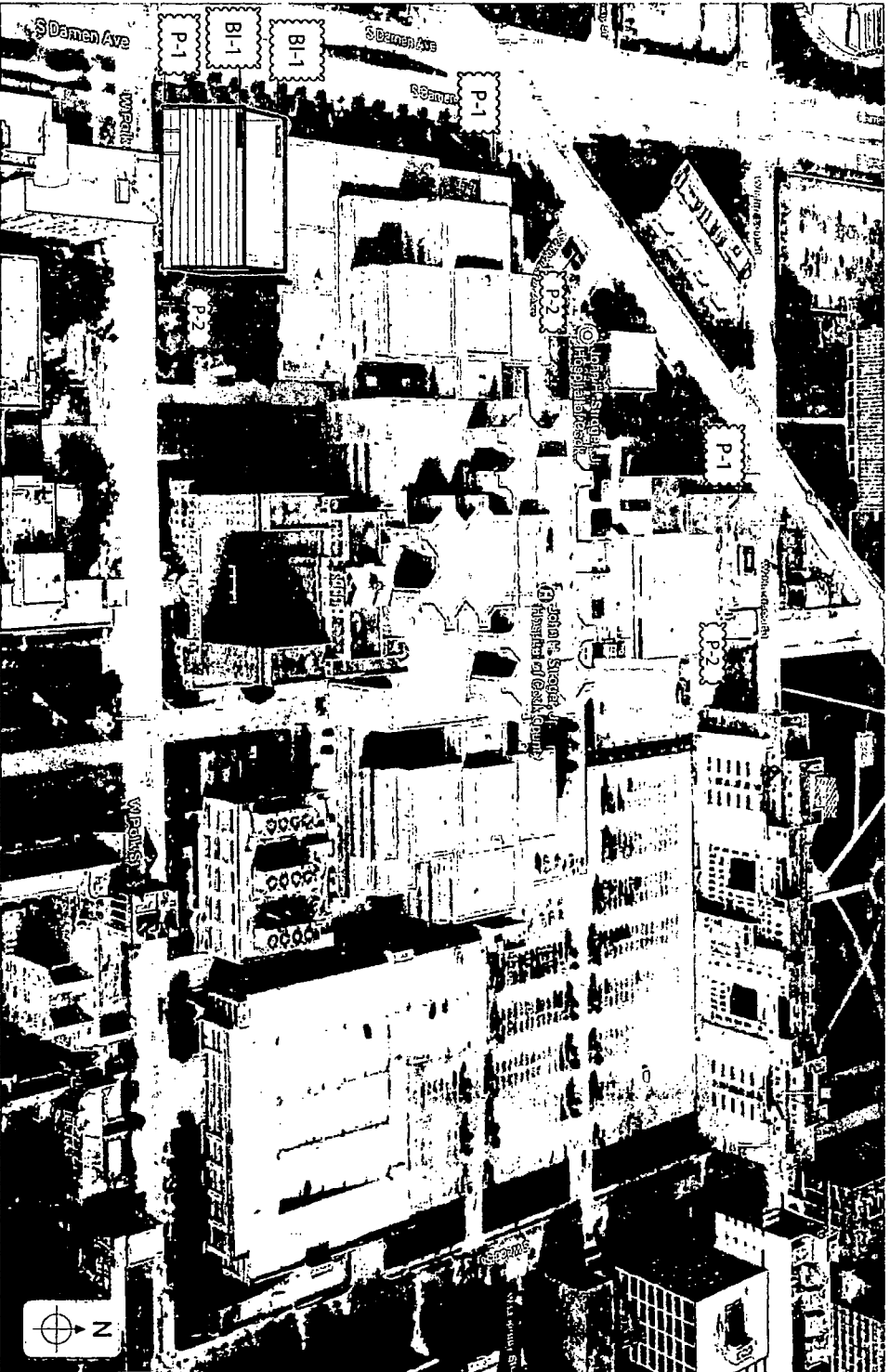
**COOK COUNTY  
HEALTH**

**Channel Lettering  
Option 2  
1950 W. Polk  
Chicago, IL  
#7026285**






07.20.18

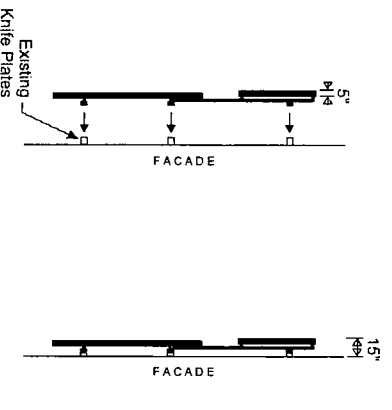
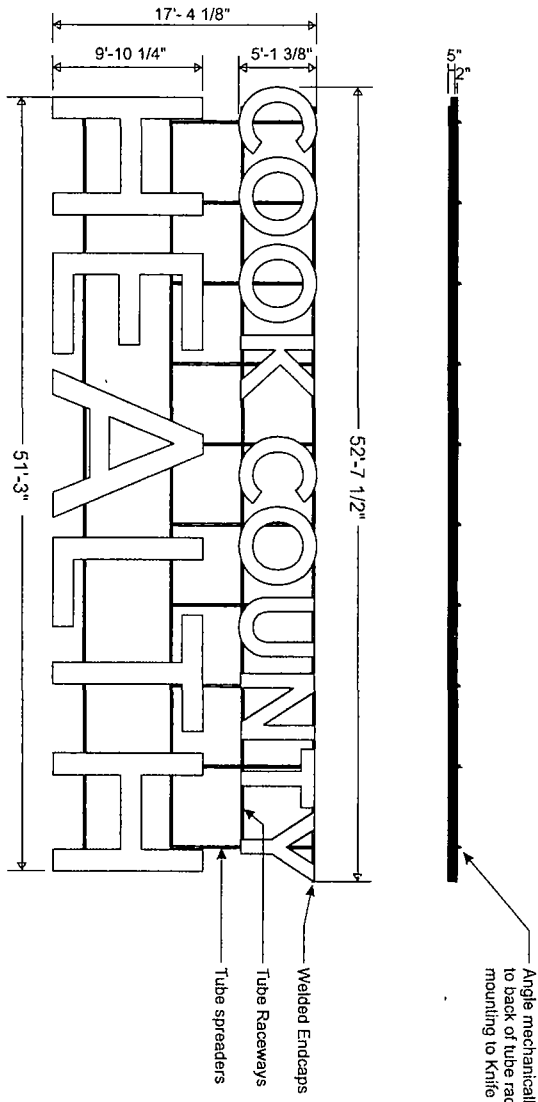
# Site Map | Sign Location Plan



## Key

- 
 Sign Type BI-1  
 Building  
 Identification Letters
- 
 Sign Type P-1  
 Directional Pylon
- 
 Sign Type P-2  
 Identification Pylon

**Sign Type BI-1 | Overview**  
912.78 SqFt



**Face-Lit Illuminated Channel Lettering on Raceway Frame - Qty: (2)**  
1/8" = 1'

- 5"D Fabricated Aluminum Channel Lettering w/ STD Black Trimcap, .063 Coil, and .090 Backs, unit painted Black
- 3/16" Translucent White Polycarb Faces
- Internal White LED Illumination; power supplies remote, electrical brought to within 5' of sign by others; access behind wall required; see raceway frame details
- Lettering secured to Raceway Frame 2"x2" aluminum tube raceways on top and bottom of each line of copy w/ vertical 2" tube spacers on top half of sign mechanically fastened to back of tubing, raceway frame painted as specified
- Raceway frame secured to existing knife plates on facade w/ angle clips and necessary hardware as needed; refer to engineering drawing for specifications

Raceway Frame  
Dark Grey to match building  
Color TBD

Letter Returns  
Black



934 N. Church,  
Elmhurst, IL 60126  
Tel. 630.333.4900  
Fax 630.333.4915

Client  
**CCHC - Cook County Hospital**

Customer Approval

Project Name  
**Exterior Signage  
1980 W. Polk, Chicago, IL**

Tracker Number  
**7026285**

Date  
**03.15.18**

Drawn By  
**VM**

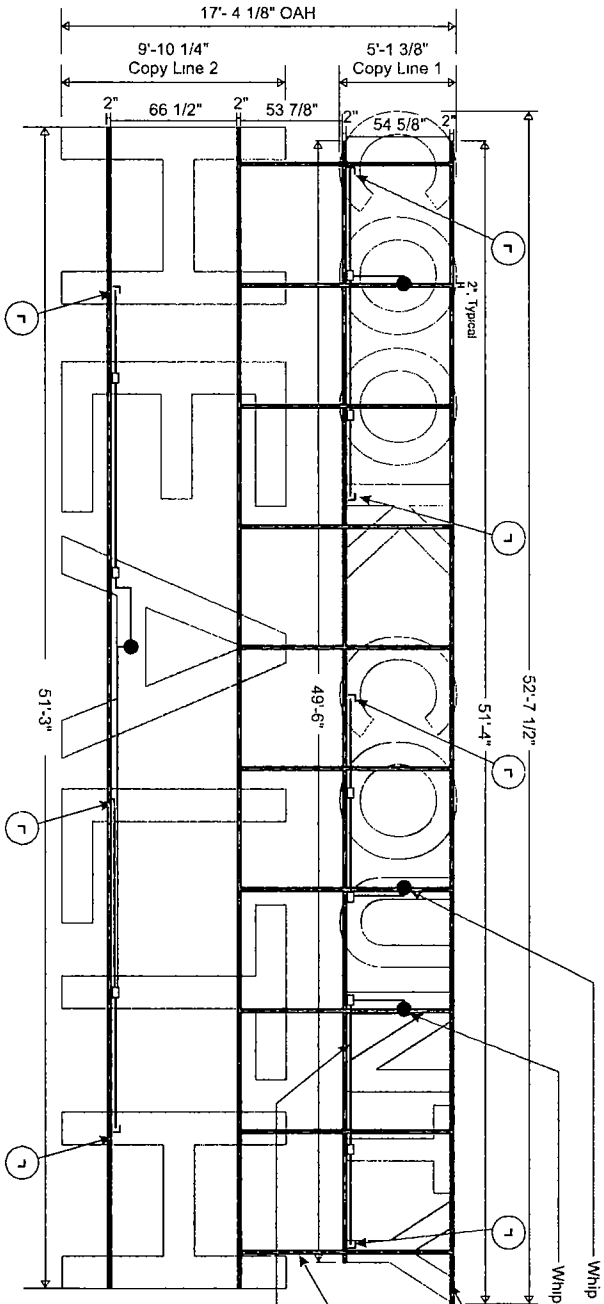
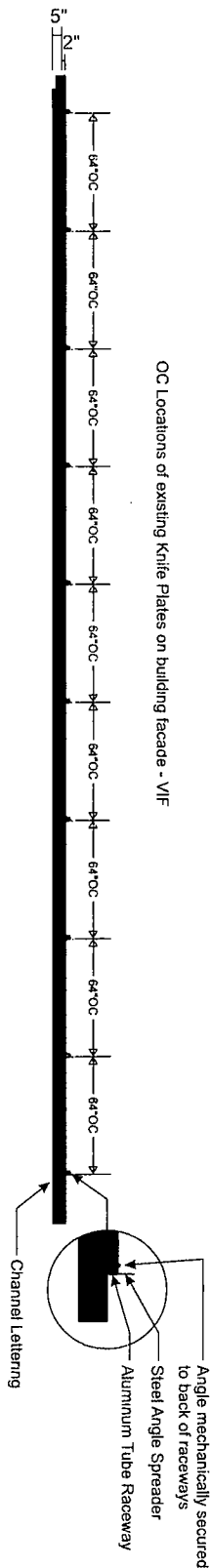
Revisions
03.26.18
06.20.18
07.20.18

\* COPYRIGHT 2018 BY SOUTH WATER SIGNS. ALL RIGHTS RESERVED. NO PART OF THIS DOCUMENT MAY BE REPRODUCED OR TRANSMITTED IN ANY FORM OR BY ANY MEANS WITHOUT PERMISSION FROM SOUTH WATER SIGNS.

# Sign Type BI-1 | Raceway Frame Details

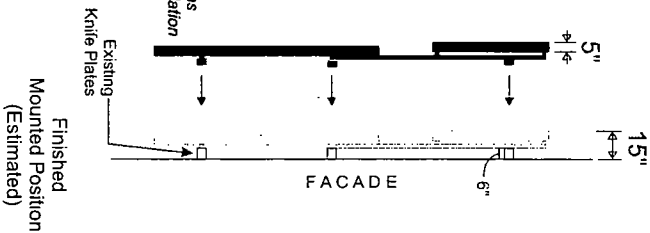
3/16" = 1'

OC Locations of existing Knife Plates on building facade - VIF



- Red Dot indicates location of electrical penetrations above existing knife plates; whips from lettersets to meet at these points  
\*Shown for intent only, confirm actual locations of penetrations for each facade prior to installation
- Junction Box (mount to back of letter can)
- ┌ Elbow Connection (Conduit)
- Conduit

**-REFER TO ENGINEERING DRAWINGS FOR ADDITIONAL INFO-**



South Water Signs

934 N. Church  
Elmhurst, IL 60126  
tel. 630.333.4900  
fax. 630.333.4915

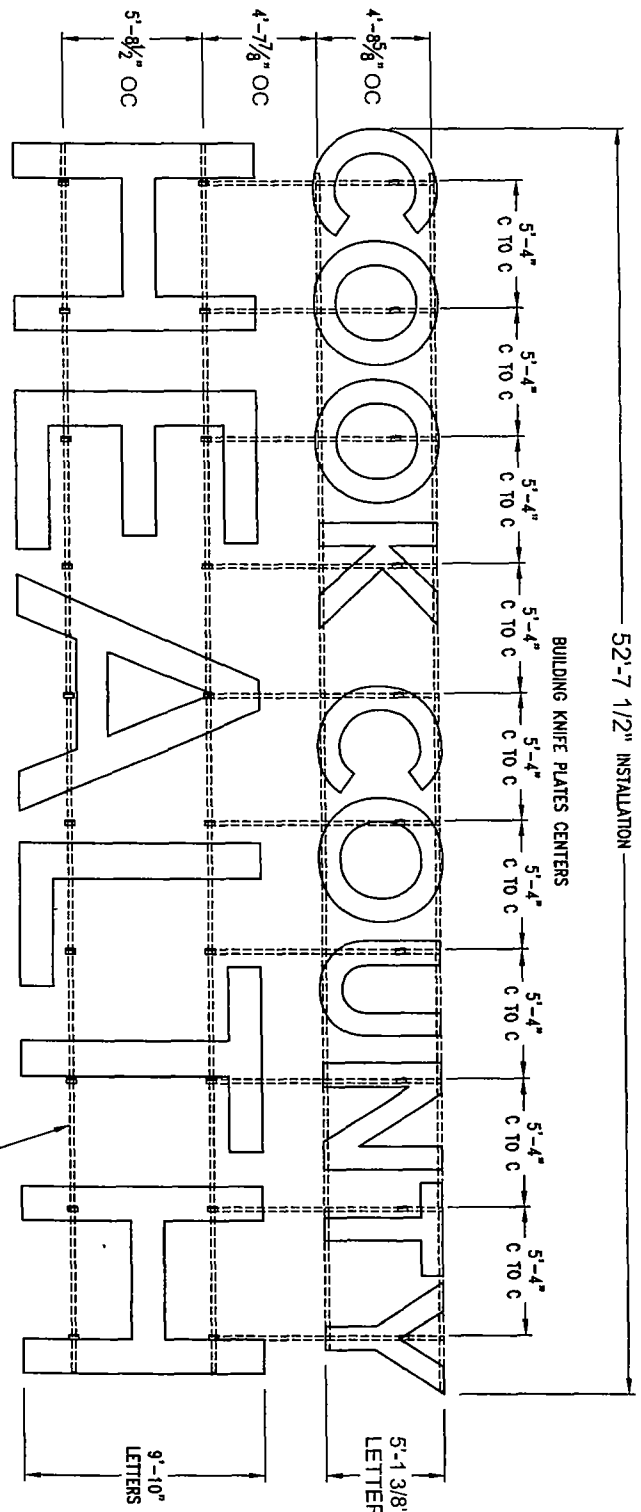
Client:  
CCHC - Cook County Hospital  
Customer Approval

Project Name:  
Exterior Signage  
1950 W. Polk, Chicago, IL  
Tracker Number  
7026285

Date  
03.15.18  
Drawn By  
VM

REVISIONS  
03.26.18  
07.20.18

© COPYRIGHT 2018 BY SOUTH WATER SIGNS  
ALL RIGHTS RESERVED. THE SOLE PROPERTY  
OF SOUTH WATER SIGNS. NO PART MAY BE  
REPRODUCED OR TRANSMITTED IN ANY FORM  
WITHOUT WRITTEN PERMISSION  
FROM SOUTH WATER SIGNS



52'-7 1/2" INSTALLATION

BUILDING KNIFE PLATES CENTERS

**ELEVATION VIEW**

TWO (2) OF THESE LETTERSETS WILL BE INSTALLED ON THE BUILDING ONE ON THE NORTH ELEVATION AND ONE ON THE SOUTH ELEVATION

**DESIGN WIND LOAD:** 41.0 PSF

Based on the Chicago Building Code Table 16 (13-52-310) of a maximum elevation of 130' and 1/3 increase for open signs.

**DESIGN SNOW LOAD:** 25.0 PSF

Based on the Chicago Building Code 16 (13-52-280) (c) for flat roofs.

**WEIGHT OF SIGN:** 925 LBS. Total

**NOTE:**

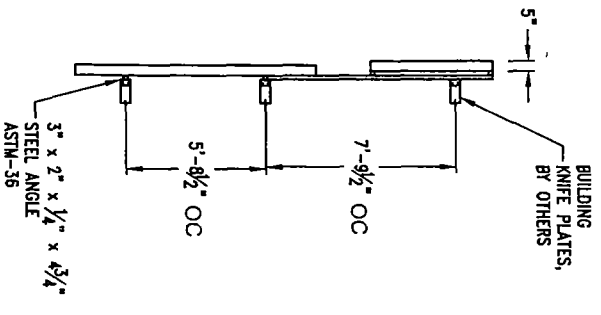
All electrical to be in accordance with UL, the NEC and local code.

ALL TUBE:  
HSS 2" x 2" x 1/8"  
ASTM A-500 Gr. B

9'-10"  
LETTERS

5'-1 3/8"  
LETTERS

**SIDE VIEW**

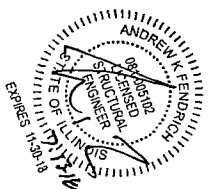


BUILDING KNIFE PLATES, BR OTHERS

7'-9 1/2" OC

5'-8 1/2" OC

3" x 2" x 1/4" x 3/4"  
STEEL ANGLE  
ASTM-36

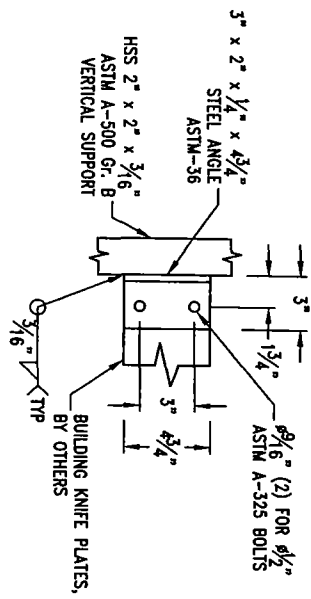
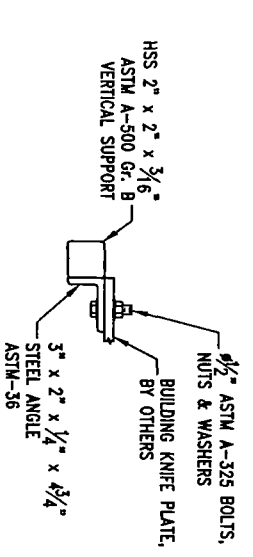
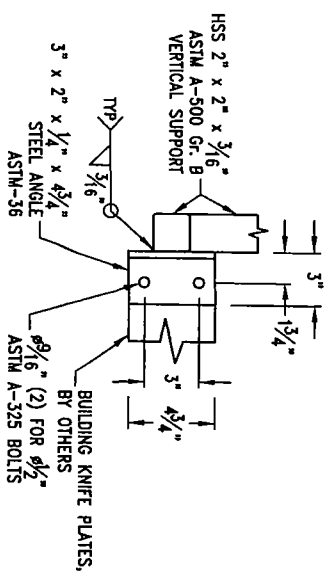
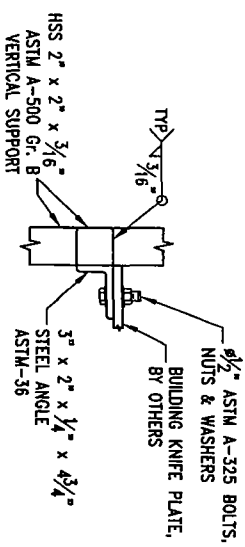
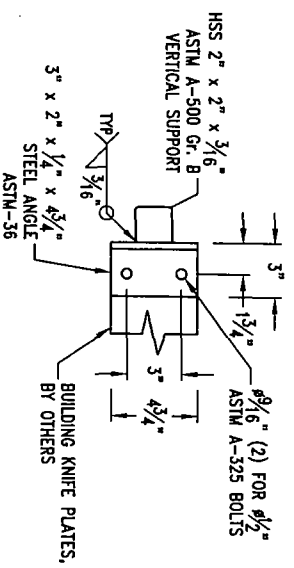
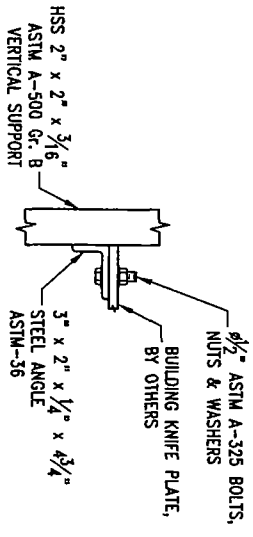


**SITE:**  
Cook County Hospital  
Central Campus Health Center  
Chicago, Illinois

**Robert-James & Associates, Inc.**  
12255 West 187th Street, Mokena Illinois 60448-9737  
phone: 708-479-8395 fax: 708-479-8395 email: rj@rjacomcast.net

**LED CHANNEL LETTERS MOUNTED TO HORIZONTAL STRINGERS AND FIN PLATES**

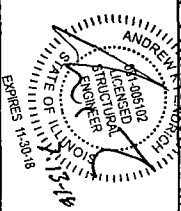
DATE	11 Jul 18	SCALE	DRAWING NUMBER	SHEET	REV.
DESIGNED BY	J. HOOGAN	DATE	11 Jul 18	1807035	1 OF 2
APPROVED BY	J. HOOGAN	DATE	11 Jul 18		A



LOWER KNIFE PLATE CONNECTION DETAIL

MIDDLE KNIFE PLATE CONNECTION DETAIL

UPPER KNIFE PLATE CONNECTION DETAIL



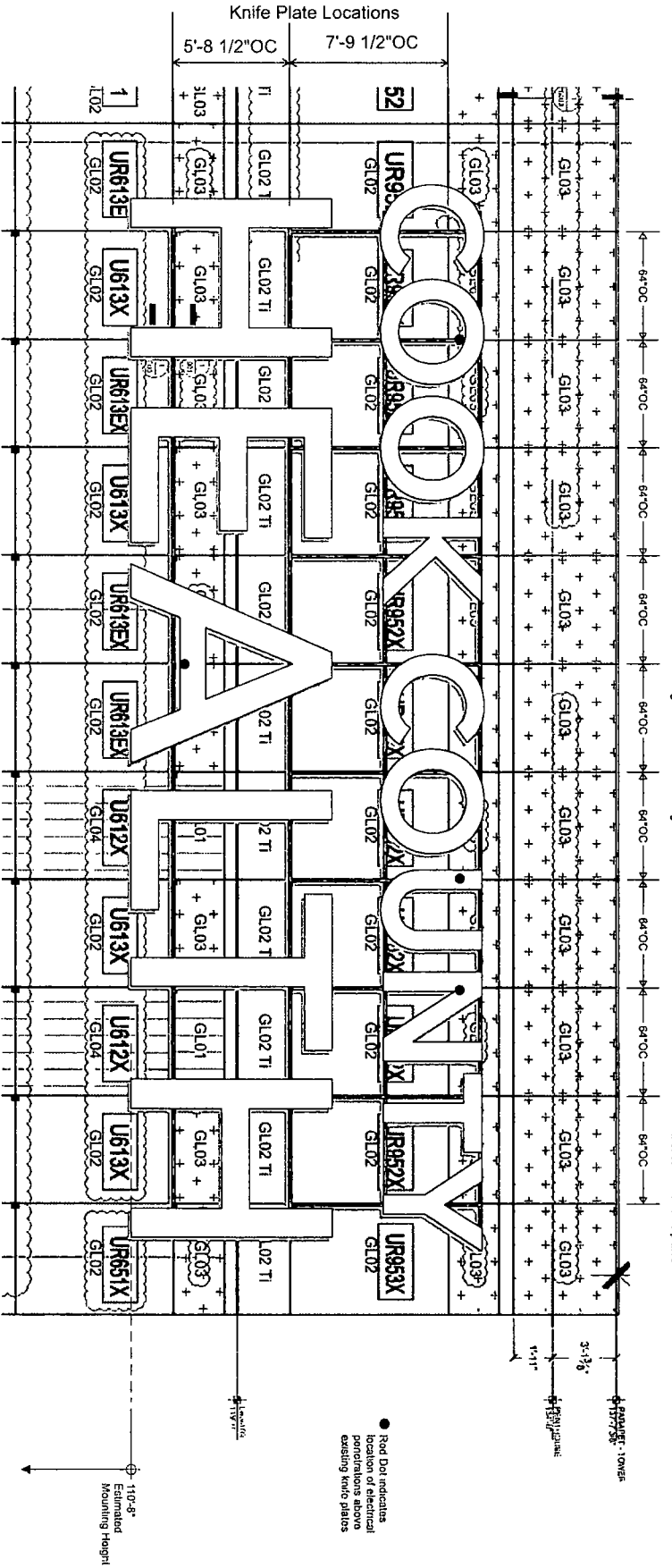
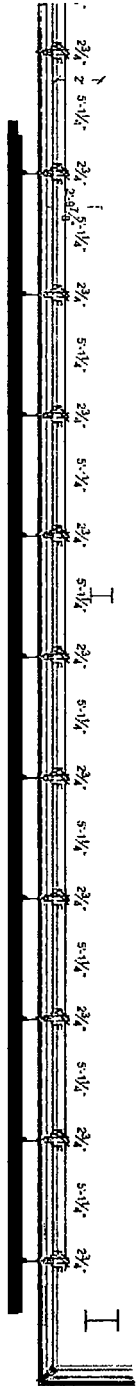
**Robert-James & Associates, Inc.**  
 12255 West 187th Street, Mokena Illinois 60448-9737  
 phone: 708-479-8385 fax: 708-479-8385 email: rja37@comcast.net

**LED CHANNEL LETTERS MOUNTED TO HORIZONTAL STRINGERS AND FIN PLATES**

DESIGNED BY	J. HOGAN	DATE	11 Jul 18	SCALE	DRAWING NUMBER	SHEET	REV.
					1807035	2	OF 2

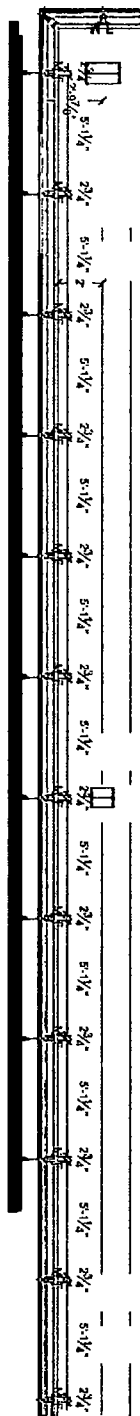


**Sign Type BI-1 | Mounting Details | North Facade**  
 3/16" = 1'



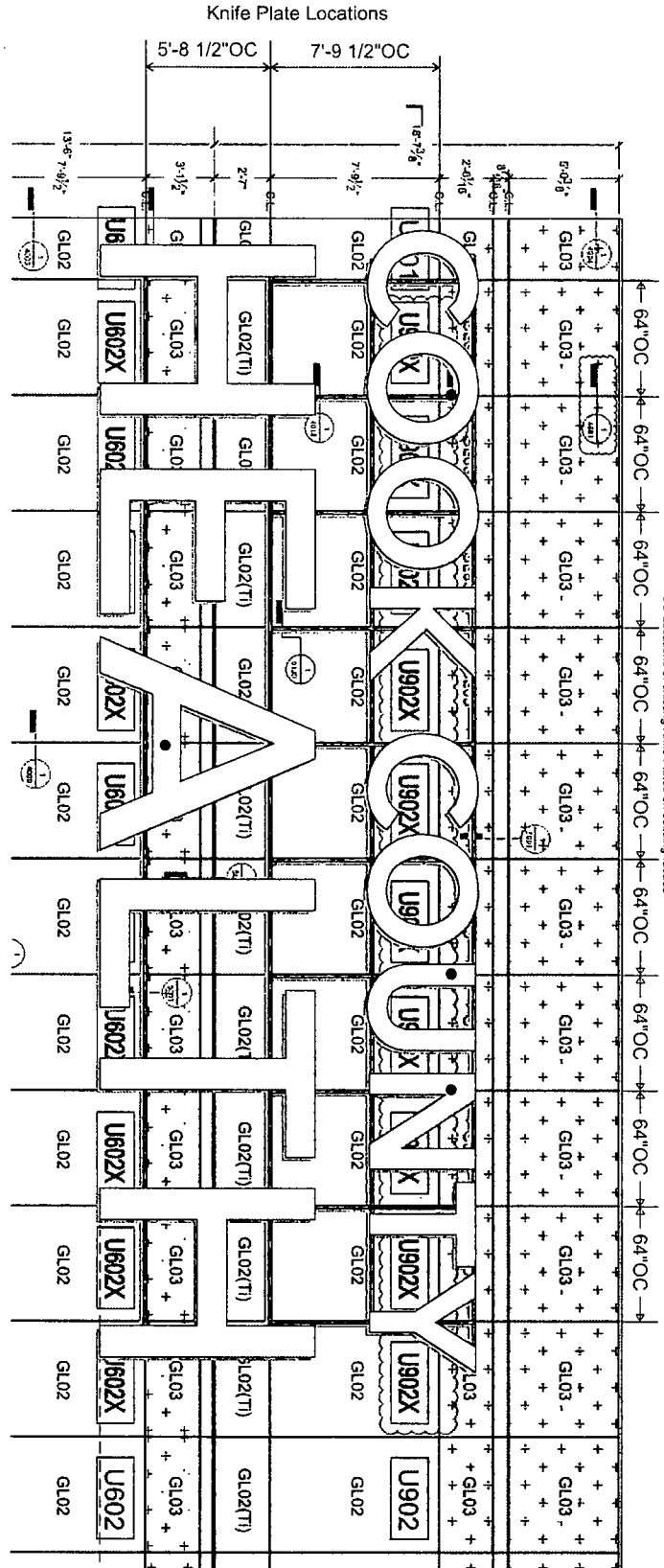
# Sign Type BI-1 | Mounting Details | South Facade

1/4" = 1'



\*Lateral mounting begins at first column of knife plates

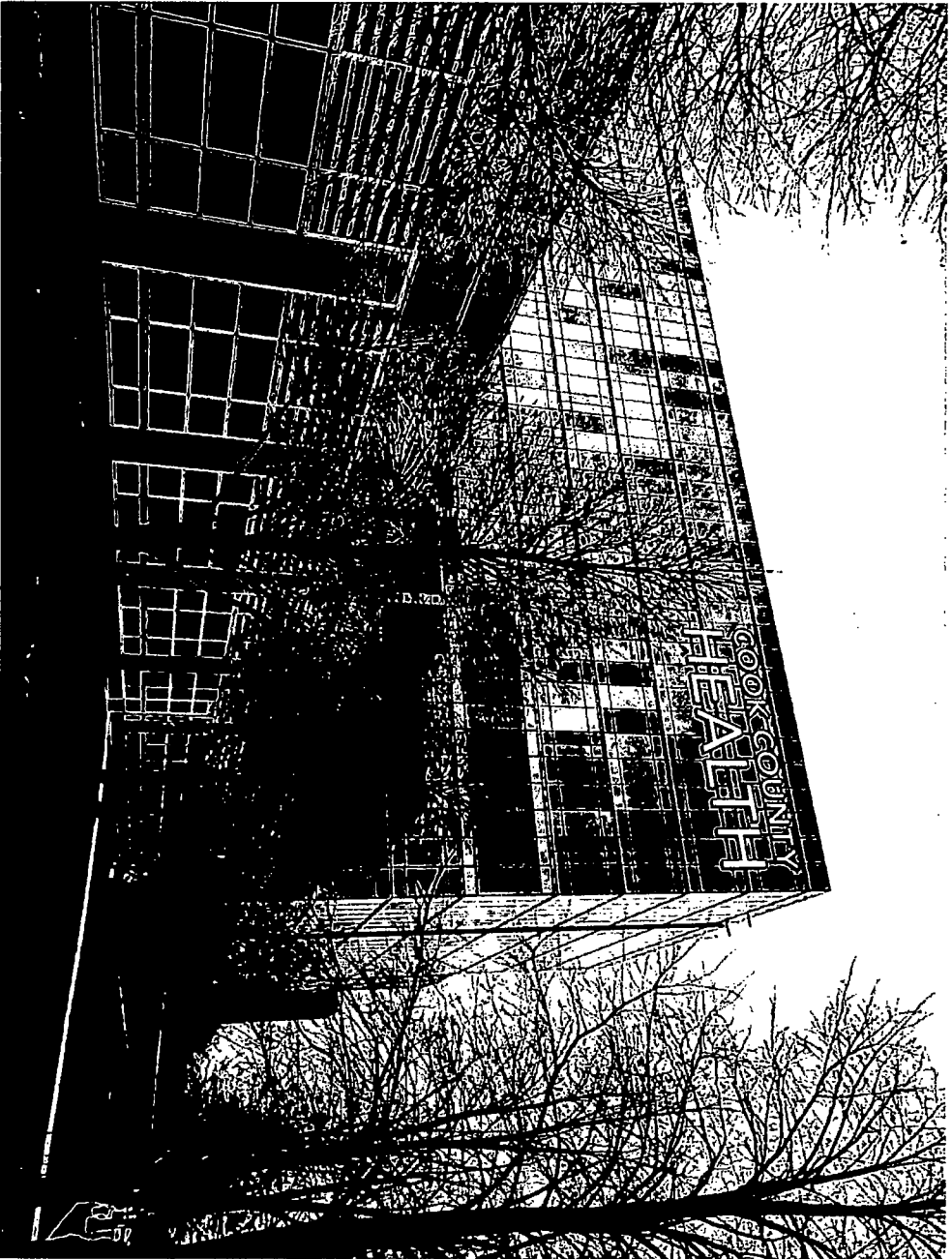
OC Locations of existing Knife Plates on building facade



● Red Dot indicates location of electrical penetrations above existing knife plates

110'-0"  
Estimated Mounting Height

Sign Type BI-1 | North Facade



Sign Type BI-1 | South Facade

