



Office of Chicago City Clerk



O2011-3215

Office of the City Clerk

City Council Document Tracking Sheet

Meeting Date:	4/13/2011
Sponsor(s):	Reilly, Brendan (42)
Type:	Ordinance
Title:	Grant(s) of Privilege in Public Way for Union Sushi & Bareque Bar
Committee(s) Assignment:	Committee on Transportation and Public Way

ORDINANCE
UNION SUSHI & BARBEQUE BAR
Acct. No. 356964 - 1
Permit No. 1094451

Be It Ordained by the City Council of the City of Chicago:

SECTION 1. Permission and authority are hereby given and granted to UNION SUSHI & BARBEQUE BAR, upon the terms and subject to the conditions of this ordinance to maintain and use three (3) sign(s) projecting over the public right-of-way attached to its premises known as 230 W. Erie St..

Said sign structure(s) measures as follows; along W Erie St:

- One (1) at six (6) feet in length, six (6) feet in height and thirty-one (31) feet above grade level.
- One (1) at ten point two five (10.25) feet in length, two point five (2.5) feet in height and nine (9) feet above grade level.
- One (1) at seven point three three (7.33) feet in length, two (2) feet in height and nine (9) feet above grade level.

The location of said privilege shall be as shown on prints kept on file with the Department of Business Affairs and Consumer Protection and the Office of the City Clerk.

Said privilege shall be constructed in accordance with plans and specifications approved by the Department of Transportation (Division of Project Development) and Zoning Department - Signs.

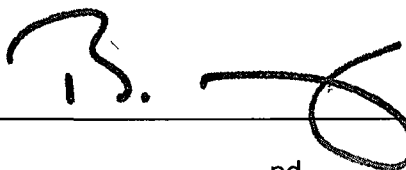
This grant of privilege in the public way shall be subject to the provisions of Section 10-28-015 and all other required provisions of the Municipal Code of Chicago.

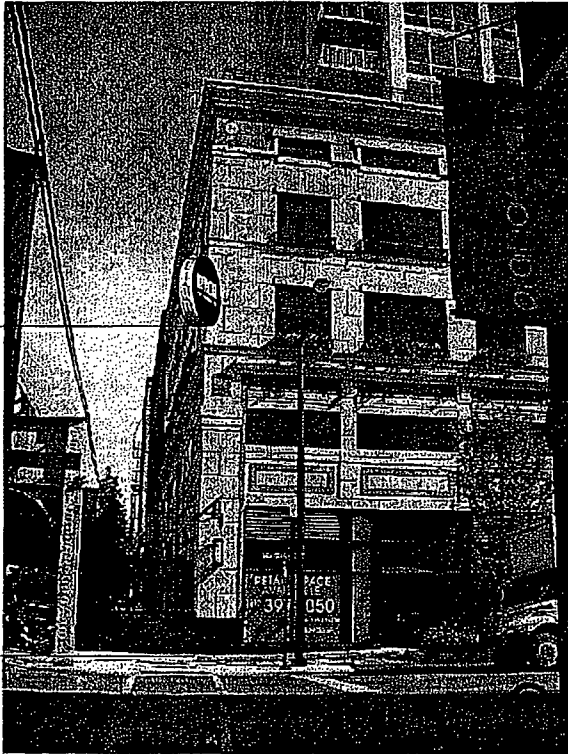
The grantee shall pay to the City of Chicago as compensation for the privilege #1094451 herein granted the sum of seven hundred (\$700.00) per annum in advance.

A 25% penalty will be added for payments received after due date.

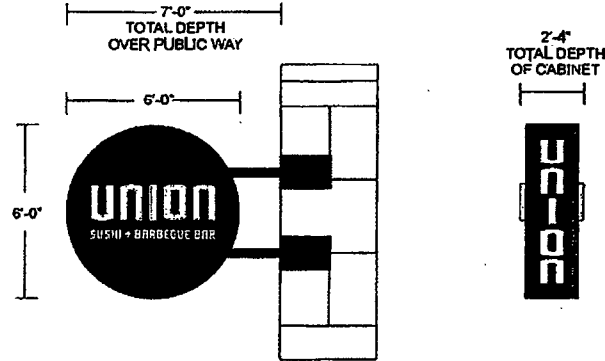
The permit holder agrees to hold the City of Chicago harmless for any damage, relocation or replacement costs associated with damage, relocation or removal of private property caused by the City performing work in the public way.

Authority herein given and granted for a period of five (5) years from and after Date of Passage.

Alderman 
Brendan Reilly 42nd Ward



31'-0"
TO GRADE



1/2"=1'-0"

Fab & Install

D/F H.O. InL Illuminated Display

Open Face Channel Letters for Copy Reading "Union"

Painted Brush Aluminum Finish Channel Letters

w/ Amber Gold Neon Illumination

Sign Cab Painted 80% Flat Black Per Sample

Push Thru Acrylic Letters for Copy Reading "SUSHI + BARBEQUE"

w/ White Trans Vinyl applied to 1st Surface.

White Diffuser Applied to 2nd Surface.

Copy on Side of Cabinet:

Routed Copy Reading "UNION" to be 1" Acrylic Push Thru Letters

w/ White Trans Vinyl applied to 1st Surface.

White Diffuser Applied to 2nd Surface.

Rigid mount 45 Angle From Corner of Building.

PHOTO RENDERINGS MAY NOT
REFLECT SCALE ACCURATELY.
REFER TO SPECIFIED DIMENSIONS
FOR CORRECT SIZES

COLOR PRINTS MAY NOT ACCURATELY REPRESENT
SPECIFIED COLORS.
FOR ACCURATE COLOR ASSESSMENT REFER TO
COLOR SPECIFICATIONS AND UTILIZE STANDARD
VINYL AND PANTONE COLOR CHARTS.

REVISION	DATE	DESIGNED BY	CHECKED BY	DATE	PROJECT	LOCATION	SCALE	DATE
1	11-13-10	DR			UNION SUSHI	CHICAGO		10/28/10
2								NOTED
3								COLLINS
4								4
5								3

WHITE WAY SIGN COMPANY
230 WHEAT BRIDGE STREET
CHICAGO, IL 60610
TEL: 312.467.1234

FRANKLIN STREET



9'-0"
TO GRADE

1/2"=1'-0"

Single Face Individual Letter Display
Open Face Channel Letters Reading "UNION"
Letters Painted White
Amber Gold - Neon Single Tube Neon
Interior Illuminated Metal Raceway Painted 80% Flat Black Per Sample
w/ White Plasto Push Thru Copy Reading "SUSHI+BARBEQUE BAR"
Square Tube Supports Painted 80% Flat Black Per Sample

Sideview

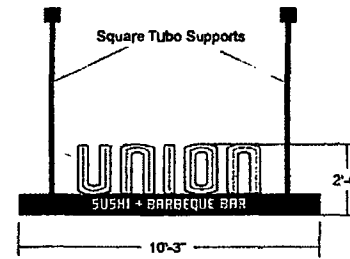
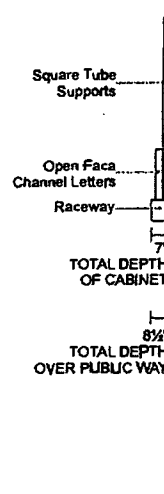
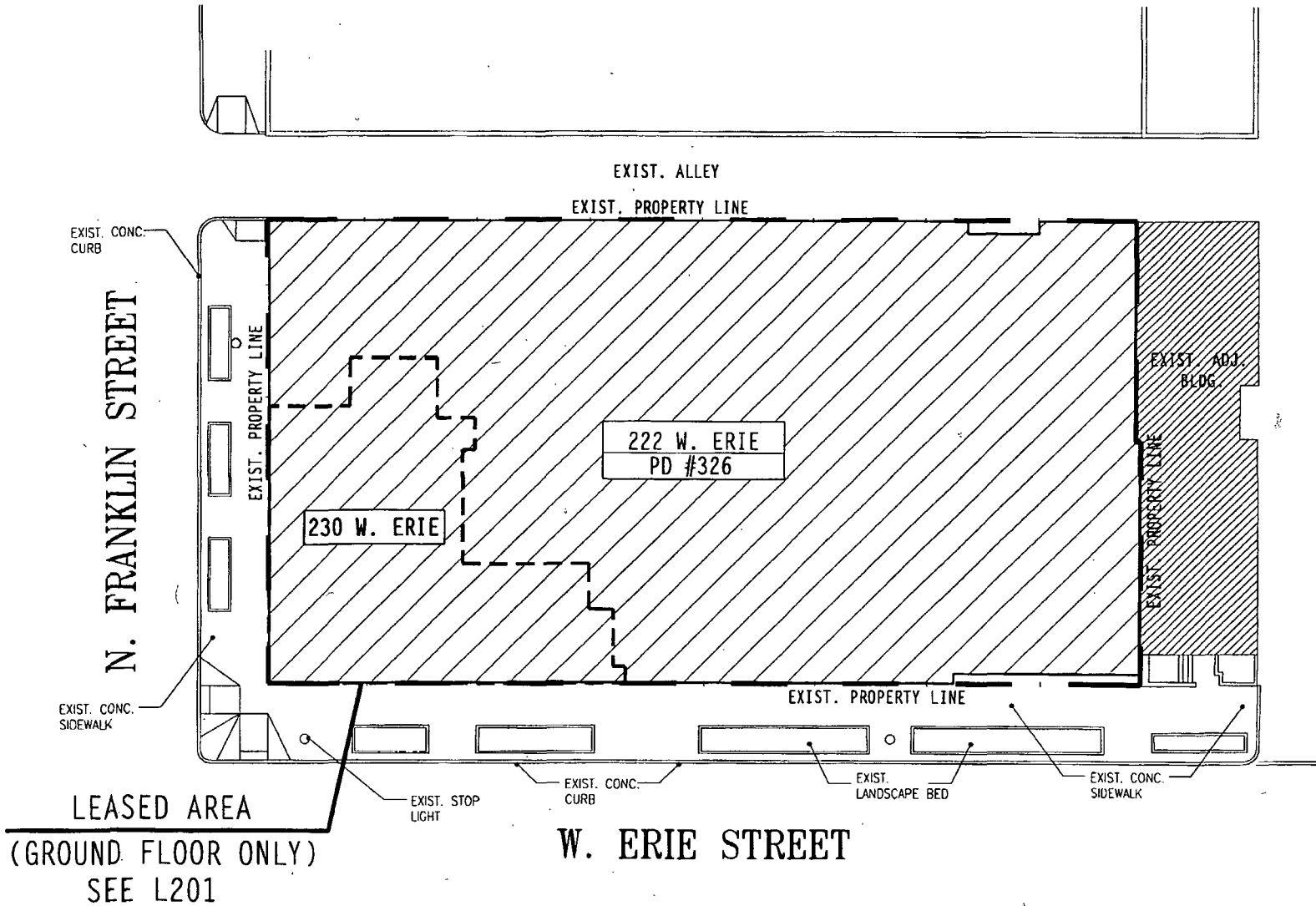


PHOTO RENDERINGS MAY NOT REFLECT SCALE ACCURATELY. REFER TO SPECIFIED DIMENSIONS FOR CORRECT SIZES.

COLOR PRINTS MAY NOT ACCURATELY REPRESENT SPECIFIED COLORS. FOR ACCURATE COLOR ASSESSMENT REFER TO COLOR SPECIFICATION AND UNLESS STANDARD VENDOR PANTONE COLOR CHARTS.

REVISION	DATE	REVISION	BY	CHKD BY	DATE
E	11-18-08	ADD SURVEY MEASUREMENTS	CS	CONROY	10-27-08
D	11-18-08	CONVERT FROM METRIC TO US UNITS	CS	CONROY	10-27-08
C	11-18-08	ADJUST LETTER HEIGHTS TO FIT SIGN	CS	CONROY	10-27-08
B	11-18-08	REVISE DIMENSIONS TO FIT SIGN	CS	CONROY	10-27-08
A	11-18-08	REVISE SIGN AND ADD NEW DISPLAYS	CS	CONROY	10-27-08

WHITE WAY SIGN COMPANY
220 WEST ERB STREET
CHICAGO, IL 60606
TEL: 312.467.1111
WWW.WHITEWAYSIGN.COM



L101 SITE PLAN

SCALE:

1/32" = 1'-0"



PROPOSED DEVELOPMENT FOR:

RESTAURANT & BAR

230 W. ERIE STREET
CHICAGO, ILLINOIS 60654

+ barker / nestor +

A R C H I T E C T U R E + D E S I G N
8135 MONTICELLO AVE. SKOKIE, IL 60076 USA
TEL: 847-763-1692 FAX: 847-763-1697

PROJECT NUMBER	NO023
DRAWING NAME	SRBG-L1.DWG
ISSUE DATE	16 NOVEMBER 10