



Office of the City Clerk



O2012-5380

Office of the City Clerk

City Council Document Tracking Sheet

Meeting Date:	7/25/2012
Sponsor(s):	Smith, Michele (43)
Type:	Ordinance
Title:	Grant(s) of privilege in public way for Francis W. Parker School
Committee(s) Assignment:	Committee on Transportation and Public Way

ORDINANCE
FRANCIS W. PARKER SCHOOL
Acct. No. 23903 - 1
Permit No. 1102036

Be It Ordained by the City Council of the City of Chicago:

SECTION 1. Permission and authority are hereby given and granted to FRANCIS W. PARKER SCHOOL, upon the terms and subject to the conditions of this ordinance to construct, install, maintain and use one (1) Lawn Sprinkler System(s) under the public right-of-way adjacent to its premises known as 330 W. Webster Ave..

Said Lawn Sprinkler System(s) at W. Webster measure(s):

One (1) at four hundred (400) feet in length, and one (1) foot in width for a total of four hundred (400) square feet.

The location of said privilege shall be as shown on prints kept on file with the Department of Business Affairs and Consumer Protection and the Office of the City Clerk.

Said privilege shall be constructed in accordance with plans and specifications approved by the Department of Transportation (Office of Underground Coordination).

This grant of privilege in the public way shall be subject to the provisions of Section 10-28-015 and all other required provisions of the Municipal Code of Chicago.

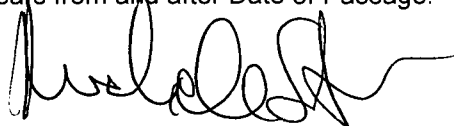
The grantee shall pay to the City of Chicago as compensation for the privilege #1102036 herein granted the sum of four hundred (\$400.00) per annum in advance.

A 25% penalty will be added for payments received after due date.

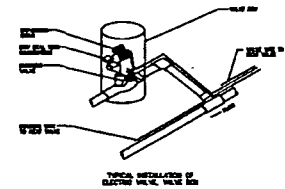
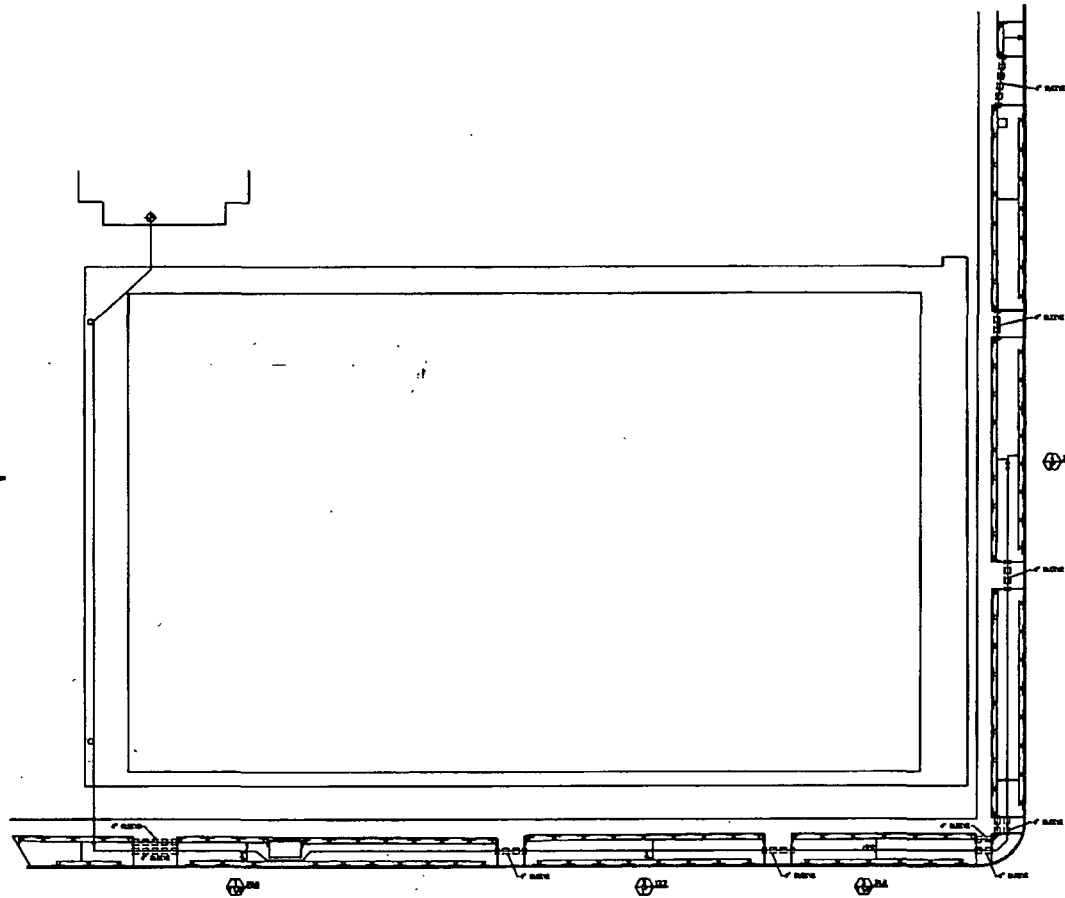
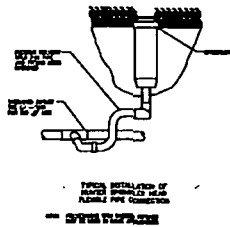
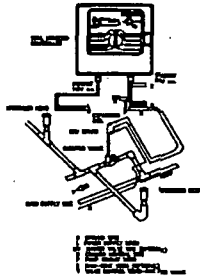
The permit holder agrees to hold the City of Chicago harmless for any damage, relocation or replacement costs associated with damage, relocation or removal of private property caused by the City performing work in the public way.

Authority herein given and granted for a period of five (5) years from and after Date of Passage.

Alderman



Michele Smith 43rd Ward



SPRINKLER HEAD LEGEND			
1	NOZZLE	1/2"	1/2"
2	NOZZLE	3/4"	3/4"
3	NOZZLE	1"	1"
4	NOZZLE	1 1/4"	1 1/4"
5	NOZZLE	1 1/2"	1 1/2"
6	NOZZLE	2"	2"
7	NOZZLE	2 1/2"	2 1/2"
8	NOZZLE	3"	3"
9	NOZZLE	3 1/2"	3 1/2"
10	NOZZLE	4"	4"
11	NOZZLE	4 1/2"	4 1/2"
12	NOZZLE	5"	5"
13	NOZZLE	5 1/2"	5 1/2"
14	NOZZLE	6"	6"
15	NOZZLE	6 1/2"	6 1/2"
16	NOZZLE	7"	7"
17	NOZZLE	7 1/2"	7 1/2"
18	NOZZLE	8"	8"
19	NOZZLE	8 1/2"	8 1/2"
20	NOZZLE	9"	9"
21	NOZZLE	9 1/2"	9 1/2"
22	NOZZLE	10"	10"
23	NOZZLE	10 1/2"	10 1/2"
24	NOZZLE	11"	11"
25	NOZZLE	11 1/2"	11 1/2"
26	NOZZLE	12"	12"
27	NOZZLE	12 1/2"	12 1/2"
28	NOZZLE	13"	13"
29	NOZZLE	13 1/2"	13 1/2"
30	NOZZLE	14"	14"
31	NOZZLE	14 1/2"	14 1/2"
32	NOZZLE	15"	15"
33	NOZZLE	15 1/2"	15 1/2"
34	NOZZLE	16"	16"
35	NOZZLE	16 1/2"	16 1/2"
36	NOZZLE	17"	17"
37	NOZZLE	17 1/2"	17 1/2"
38	NOZZLE	18"	18"
39	NOZZLE	18 1/2"	18 1/2"
40	NOZZLE	19"	19"
41	NOZZLE	19 1/2"	19 1/2"
42	NOZZLE	20"	20"
43	NOZZLE	20 1/2"	20 1/2"
44	NOZZLE	21"	21"
45	NOZZLE	21 1/2"	21 1/2"
46	NOZZLE	22"	22"
47	NOZZLE	22 1/2"	22 1/2"
48	NOZZLE	23"	23"
49	NOZZLE	23 1/2"	23 1/2"
50	NOZZLE	24"	24"
51	NOZZLE	24 1/2"	24 1/2"
52	NOZZLE	25"	25"
53	NOZZLE	25 1/2"	25 1/2"
54	NOZZLE	26"	26"
55	NOZZLE	26 1/2"	26 1/2"
56	NOZZLE	27"	27"
57	NOZZLE	27 1/2"	27 1/2"
58	NOZZLE	28"	28"
59	NOZZLE	28 1/2"	28 1/2"
60	NOZZLE	29"	29"
61	NOZZLE	29 1/2"	29 1/2"
62	NOZZLE	30"	30"
63	NOZZLE	30 1/2"	30 1/2"
64	NOZZLE	31"	31"
65	NOZZLE	31 1/2"	31 1/2"
66	NOZZLE	32"	32"
67	NOZZLE	32 1/2"	32 1/2"
68	NOZZLE	33"	33"
69	NOZZLE	33 1/2"	33 1/2"
70	NOZZLE	34"	34"
71	NOZZLE	34 1/2"	34 1/2"
72	NOZZLE	35"	35"
73	NOZZLE	35 1/2"	35 1/2"
74	NOZZLE	36"	36"
75	NOZZLE	36 1/2"	36 1/2"
76	NOZZLE	37"	37"
77	NOZZLE	37 1/2"	37 1/2"
78	NOZZLE	38"	38"
79	NOZZLE	38 1/2"	38 1/2"
80	NOZZLE	39"	39"
81	NOZZLE	39 1/2"	39 1/2"
82	NOZZLE	40"	40"
83	NOZZLE	40 1/2"	40 1/2"
84	NOZZLE	41"	41"
85	NOZZLE	41 1/2"	41 1/2"
86	NOZZLE	42"	42"
87	NOZZLE	42 1/2"	42 1/2"
88	NOZZLE	43"	43"
89	NOZZLE	43 1/2"	43 1/2"
90	NOZZLE	44"	44"
91	NOZZLE	44 1/2"	44 1/2"
92	NOZZLE	45"	45"
93	NOZZLE	45 1/2"	45 1/2"
94	NOZZLE	46"	46"
95	NOZZLE	46 1/2"	46 1/2"
96	NOZZLE	47"	47"
97	NOZZLE	47 1/2"	47 1/2"
98	NOZZLE	48"	48"
99	NOZZLE	48 1/2"	48 1/2"
100	NOZZLE	49"	49"
101	NOZZLE	49 1/2"	49 1/2"
102	NOZZLE	50"	50"
103	NOZZLE	50 1/2"	50 1/2"
104	NOZZLE	51"	51"
105	NOZZLE	51 1/2"	51 1/2"
106	NOZZLE	52"	52"
107	NOZZLE	52 1/2"	52 1/2"
108	NOZZLE	53"	53"
109	NOZZLE	53 1/2"	53 1/2"
110	NOZZLE	54"	54"
111	NOZZLE	54 1/2"	54 1/2"
112	NOZZLE	55"	55"
113	NOZZLE	55 1/2"	55 1/2"
114	NOZZLE	56"	56"
115	NOZZLE	56 1/2"	56 1/2"
116	NOZZLE	57"	57"
117	NOZZLE	57 1/2"	57 1/2"
118	NOZZLE	58"	58"
119	NOZZLE	58 1/2"	58 1/2"
120	NOZZLE	59"	59"
121	NOZZLE	59 1/2"	59 1/2"
122	NOZZLE	60"	60"
123	NOZZLE	60 1/2"	60 1/2"
124	NOZZLE	61"	61"
125	NOZZLE	61 1/2"	61 1/2"
126	NOZZLE	62"	62"
127	NOZZLE	62 1/2"	62 1/2"
128	NOZZLE	63"	63"
129	NOZZLE	63 1/2"	63 1/2"
130	NOZZLE	64"	64"
131	NOZZLE	64 1/2"	64 1/2"
132	NOZZLE	65"	65"
133	NOZZLE	65 1/2"	65 1/2"
134	NOZZLE	66"	66"
135	NOZZLE	66 1/2"	66 1/2"
136	NOZZLE	67"	67"
137	NOZZLE	67 1/2"	67 1/2"
138	NOZZLE	68"	68"
139	NOZZLE	68 1/2"	68 1/2"
140	NOZZLE	69"	69"
141	NOZZLE	69 1/2"	69 1/2"
142	NOZZLE	70"	70"
143	NOZZLE	70 1/2"	70 1/2"
144	NOZZLE	71"	71"
145	NOZZLE	71 1/2"	71 1/2"
146	NOZZLE	72"	72"
147	NOZZLE	72 1/2"	72 1/2"
148	NOZZLE	73"	73"
149	NOZZLE	73 1/2"	73 1/2"
150	NOZZLE	74"	74"
151	NOZZLE	74 1/2"	74 1/2"
152	NOZZLE	75"	75"
153	NOZZLE	75 1/2"	75 1/2"
154	NOZZLE	76"	76"
155	NOZZLE	76 1/2"	76 1/2"
156	NOZZLE	77"	77"
157	NOZZLE	77 1/2"	77 1/2"
158	NOZZLE	78"	78"
159	NOZZLE	78 1/2"	78 1/2"
160	NOZZLE	79"	79"
161	NOZZLE	79 1/2"	79 1/2"
162	NOZZLE	80"	80"
163	NOZZLE	80 1/2"	80 1/2"
164	NOZZLE	81"	81"
165	NOZZLE	81 1/2"	81 1/2"
166	NOZZLE	82"	82"
167	NOZZLE	82 1/2"	82 1/2"
168	NOZZLE	83"	83"
169	NOZZLE	83 1/2"	83 1/2"
170	NOZZLE	84"	84"
171	NOZZLE	84 1/2"	84 1/2"
172	NOZZLE	85"	85"
173	NOZZLE	85 1/2"	85 1/2"
174	NOZZLE	86"	86"
175	NOZZLE	86 1/2"	86 1/2"
176	NOZZLE	87"	87"
177	NOZZLE	87 1/2"	87 1/2"
178	NOZZLE	88"	88"
179	NOZZLE	88 1/2"	88 1/2"
180	NOZZLE	89"	89"
181	NOZZLE	89 1/2"	89 1/2"
182	NOZZLE	90"	90"
183	NOZZLE	90 1/2"	90 1/2"
184	NOZZLE	91"	91"
185	NOZZLE	91 1/2"	91 1/2"
186	NOZZLE	92"	92"
187	NOZZLE	92 1/2"	92 1/2"
188	NOZZLE	93"	93"
189	NOZZLE	93 1/2"	93 1/2"
190	NOZZLE	94"	94"
191	NOZZLE	94 1/2"	94 1/2"
192	NOZZLE	95"	95"
193	NOZZLE	95 1/2"	95 1/2"
194	NOZZLE	96"	96"
195	NOZZLE	96 1/2"	96 1/2"
196	NOZZLE	97"	97"
197	NOZZLE	97 1/2"	97 1/2"
198	NOZZLE	98"	98"
199	NOZZLE	98 1/2"	98 1/2"
200	NOZZLE	99"	99"
201	NOZZLE	99 1/2"	99 1/2"
202	NOZZLE	100"	100"
203	NOZZLE	100 1/2"	100 1/2"
204	NOZZLE	101"	101"
205	NOZZLE	101 1/2"	101 1/2"
206	NOZZLE	102"	102"
207	NOZZLE	102 1/2"	102 1/2"
208	NOZZLE	103"	103"
209	NOZZLE	103 1/2"	103 1/2"
210	NOZZLE	104"	104"
211	NOZZLE	104 1/2"	104 1/2"
212	NOZZLE	105"	105"
213	NOZZLE	105 1/2"	105 1/2"
214	NOZZLE	106"	106"
215	NOZZLE	106 1/2"	106 1/2"
216	NOZZLE	107"	107"
217	NOZZLE	107 1/2"	107 1/2"
218	NOZZLE	108"	108"
219	NOZZLE	108 1/2"	108 1/2"
220	NOZZLE	109"	109"
221	NOZZLE	109 1/2"	109 1/2"
222	NOZZLE	110"	110"
223	NOZZLE	110 1/2"	110 1/2"
224	NOZZLE	111"	111"
225	NOZZLE	111 1/2"	111 1/2"
226	NOZZLE	112"	112"
227	NOZZLE	112 1/2"	112 1/2"
228	NOZZLE	113"	113"
229	NOZZLE	113 1/2"	113 1/2"
230	NOZZLE	114"	114"
231	NOZZLE	114 1/2"	114 1/2"
232	NOZZLE	115"	115"
233	NOZZLE	115 1/2"	115 1/2"
234	NOZZLE	116"	116"
235	NOZZLE	116 1/2"	116 1/2"
236	NOZZLE	117"	117"
237	NOZZLE	117 1/2"	117 1/2"
238	NOZZLE	118"	118"
239	NOZZLE	118 1/2"	118 1/2"
240	NOZZLE	119"	119"
241	NOZZLE	119 1/2"	119 1/2"
242	NOZZLE	120"	120"
243	NOZZLE	120 1/2"	120 1/2"
244	NOZZLE	121"	121"
245	NOZZLE	121 1/2"	121 1/2"
246	NOZZLE	122"	122"
247	NOZZLE	122 1/2"	122 1/2"
248	NOZZLE	123"	123"
249	NOZZLE	123 1/2"	123 1/2"
250	NOZZLE	124"	124"
251	NOZZLE	124 1/2"	124 1/2"
252	NOZZLE	125"	125"
253	NOZZLE	125 1/2"	125 1/2"
254	NOZZLE	126"	126"
255	NOZZLE	126 1/2"	126 1/2"
256	NOZZLE	127"	127"
257	NOZZLE	127 1/2"	127 1/2"
258	NOZZLE	128"	128"
259	NOZZLE	128 1/2"	128 1/2"
260	NOZZLE	129"	129"
261	NOZZLE	129 1/2"	129 1/2"
262	NOZZLE	130"	130"
263	NOZZLE	130 1/2"	130 1/2"
264	NOZZLE	131"	131"
265	NOZZLE	131 1/2"	131 1/2"
266	NOZZLE	132"	132"
267	NOZZLE	132 1/2"	132 1/2"
268			