



# City of Chicago



O2014-8893

Office of the City Clerk

## Document Tracking Sheet

**Meeting Date:** 11/5/2014

**Sponsor(s):** Ervin (28)

**Type:** Ordinance

**Title:** Zoning Reclassification Map No. 2-H at 2300-2340 W Harrison St, 500-514 S Oakley Blvd, 500-514 S Claremont Ave and 501-515 S Claremont Ave

**Committee(s) Assignment:** Committee on Zoning, Landmarks and Building Standards

**ORDINANCE**

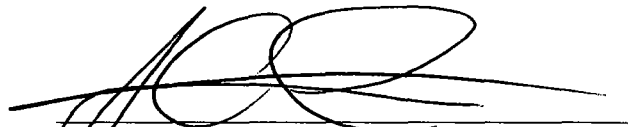
BE IT ORDAINED BY THE CITY COUNCIL OF THE CITY OF CHICAGO:

SECTION 1. Title 17 of the Municipal Code of Chicago, the Chicago Zoning Ordinance, is hereby amended by changing all of the C1-3 Neighborhood Commercial District and RM5 Residential Multi-Unit District symbols and indications as shown on Map No. 2-H in the area bounded by

West Congress Parkway; South Oakley Boulevard; West Harrison Street; and the public alley next west of and parallel to South Claremont Avenue,

to those of an RT4 Residential Two-Flat Townhouse and Multi-Unit District.

SECTION 2. This ordinance shall be in force and effect from and after its passage and due publication.



Jason Ervin  
Alderman, 28<sup>th</sup> Ward

Common Address of Property: 2300-40 West Harrison Street  
500-14 South Oakley Boulevard  
500-14 South Claremont Avenue  
501-15 South Claremont Avenue

33  
(731)

17

W. VAN BUREN

DWIGHT D. EISENHOWER EXPY. S.S. (W. CONGRESS EXPY.) (DEPRESSED) EISENHOWER EXPY.  
C.T.A. RAPID TRANSIT GARFIELD PARK BRANCH

RM-5  
1-C1-B  
1-0

RTA

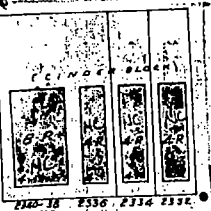
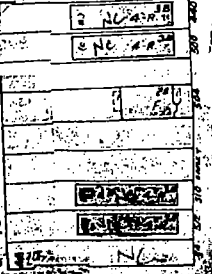
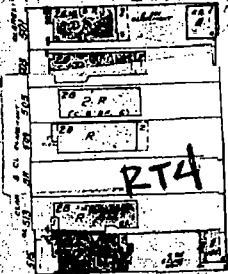
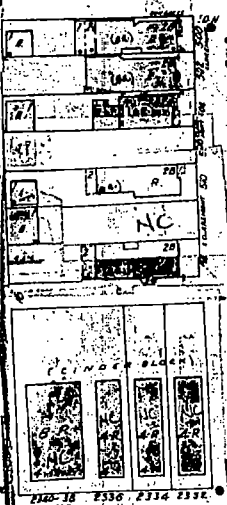
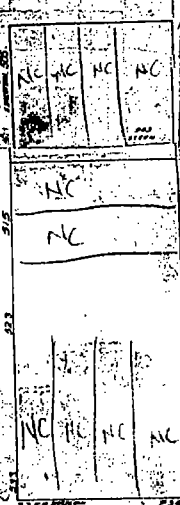
CONGRESS

P.W.Y.

WESTERN

S. CLAREMONT

S. OAKLEY



W. HARRISON

49

Scale of Feet  
0 25 50 75 100

39-14-18C  
17-18

# W 1/2 NW 1/4 SEC 18-39-14 WEST

"A"  
ROCKWELL'S ADD TO CHICAGO, in the N. E. 1/4 of Sec. 18-39-14 and the W 1/2 of the N. W. 1/4 of Sec. 18-39-14 Ante-Fire Rec. Jul 18, 1854

"B"  
SUB of the E. 211 ft. of the N. W. 1/4 of Sec. 18-39-14 Ante-Fire

"C"  
SUB of Lots 7, 8, & 9 of Blk. 9 of Rockwell's Add to Chicago (see "A") Ante-Fire

"D"  
BOWEN'S SUB of Lot 18 in Blk. 10 in Rockwell's Add to Chicago (see "A") Ante-Fire

"E"  
SUB of the W 1/2 of Lot 19 in Blk. 10 in Rockwell's Add to Chicago (see "A") Ante-Fire

"F"  
MURRAY'S SUB of Lots 2 & 3 of Blk. 10 in Rockwell's Add to Chicago (see "A") Ante-Fire

"G"  
POWINS'S SUB of the N. 449 ft. of Lot 1 of Blk. 9 in Rockwell's Add to Chicago (see "A") Ante-Fire

"H"  
M. SHROUPS SUB of Lot 1 in Blk. 10 in Rockwell's Add to Chicago (see "A") Ante-Fire

"I"  
FREEMAN & OTHERS'S SUB of Lots 14, 15, 16, & 17 in Blk. 10 of Rockwell's Add to Chicago (see "A") Ante-Fire

"J"  
E. H. SHELDON'S SUB of Lots 1 & 2 of Blk. 11 of Rockwell's Add to Chicago (see "A") Ante-Fire

"K"  
JOHN E. STEPHANS'S SUB of Lot 9-1/2 in Blk. 9 in Rockwell's Add to Chicago (see "A") Ante-Fire Rec. Feb 11, 1871

"L"  
ASSESSORS DIV of Lots 11, 12, & 13 of Blk. 10 of Rockwell's Add to Chicago (see "A") Rec. Dec 1, 1871 Dec 4841

"M"  
SUB of Sublots 10, 11, 12, & 13 of Lot 9-1/2 of Blk. 9 of Rockwell's Add to Chicago (see "A") Rec. Feb 12, 1872 Dec 12004

"N"  
JAMESON'S RESUB. of Lots 1 to 10 in Bowen's Sub of Lot 18 and so much of Lots 17 & 18 in E. Smith's & Others Sub of Lots 14, 15, 16, & 17 in Blk. 10 of Rockwell's Add to Chicago as lies N. of Adams St. (see "A") Rec. Jun 17, 1872 Dec 37684

"O"  
SUB of Lots 8, 9, & 10 in Blk. 10 in Rockwell's Add to Chicago (see "A") Rec. Jun 27, 1873 Dec 100494

"P"  
SUB of sublots 6 & 7 of the W part of Lot 19 of Blk. 10 of Rockwell's Add to Chicago (see "A") Rec. Dec 18, 1873 Dec 141321

"Q"  
SUB of Lots 1 to 12 incl. of Blk. 12 in Rockwell's Add to Chicago (see "A") Rec. Aug 8, 1874 Dec 172614

"R"  
BANK'S SUB of the W part of the S 1/2 of the S 1/2 of Lot 13 of Blk. 12 of Rockwell's Add to Chicago (see "A") Rec. Aug 6, 1873 Dec 113220

"S"  
SUB of Lot 13 of Blk. 12 of Rockwell's Add to Chicago (see "A"), including the former Sub of the 18 sublots in the S.W. corner of said Lot 13 to Resub. of sublots 10 to 14 of the said 18 sublots Rec. Sep 6, 1875 Dec 47639

"T"  
BANK'S SUB of Lot 9 of Blk. 11 of Rockwell's Add to Chicago (see "A") Rec. Oct 9, 1875 Dec 52842

"U"  
J. M. BANK'S RESUB of the W 1/2 of Lot 13 of Blk. 12 (see "S") Rec. Oct 12, 1875 Dec 53101

"V"  
SUB of Lots 1, 2, 3, 11, 32, 33, 34, & 35 of Blk. 1 of Bank's Sub of Lot 9 (see "U") Rec. Oct 12, 1875 Dec 53102

"W"  
HEARD & POWINS'S SUB of all that part lying N. of Monroe St. of Lot 6 and the E 1/2 of Lot 5 of Blk. 9 of Rockwell's Add to Chicago (see "A") Rec. Jun 23, 1876 Dec 91740

"X"  
POWINS'S SUB of all that part lying S. of Monroe St. of Lot 4 and the E 1/2 of Lot 3 of Blk. 9 of Rockwell's Add to Chicago (see "A") Rec. Jul 1, 1876 Dec 92706

"Y"  
SUB of the W 1/2 of Sublots 17 to 24 incl. in Sub of Lots 7, 8, & 9 incl. in Blk. 9 of Rockwell's Add to Chicago (see "A") Rec. Jul 12, 1876 Dec 94069

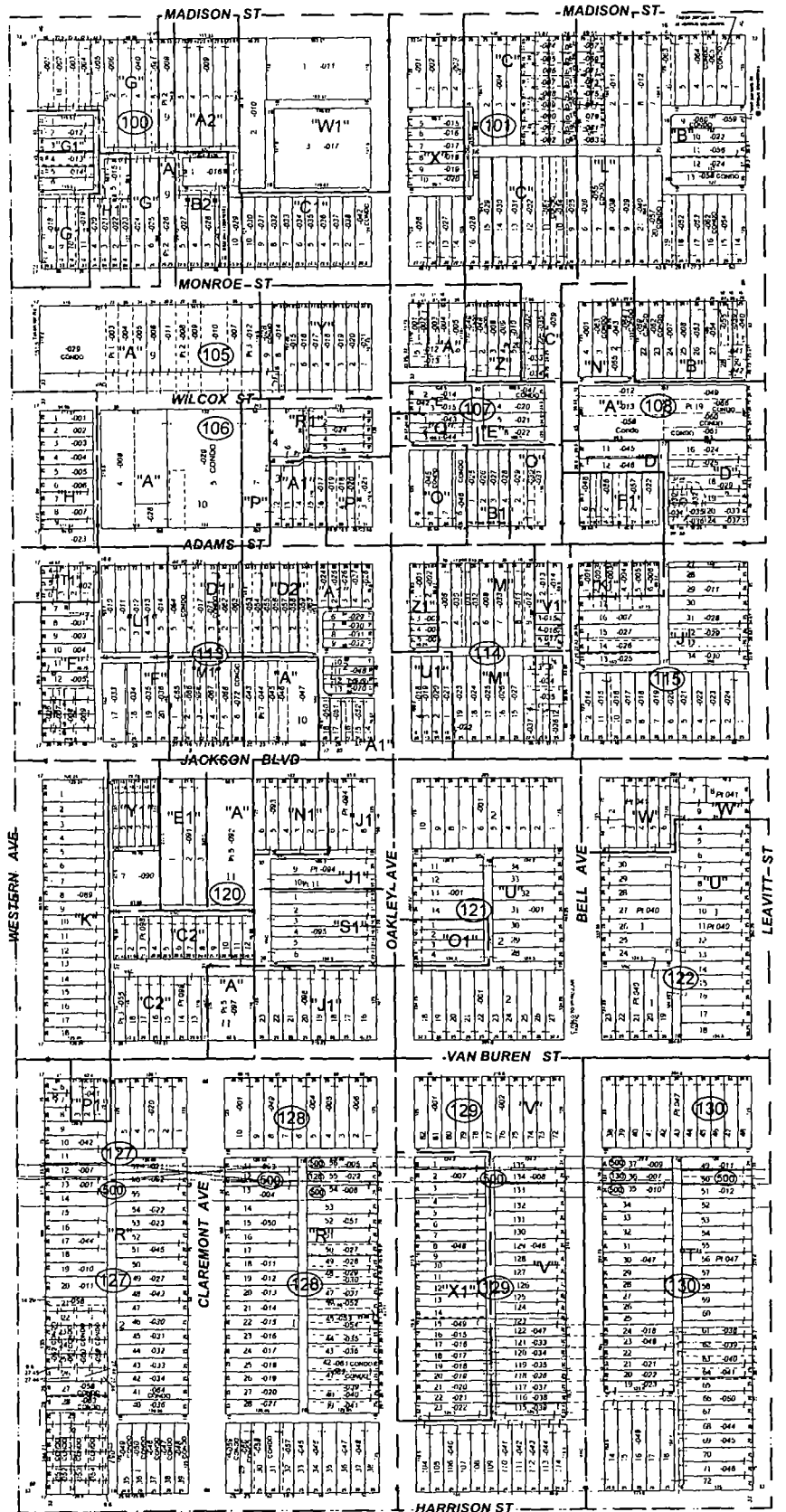
"Z"  
TRAVERS'S SUB of Sublots 1, 2, 5, 6, 10, 11, 12, & 13 of Lots 8, 9, & 10 of Blk. 10 of Rockwell's Add to Chicago (see "A") Rec. Aug 23, 1876 Dec 100007

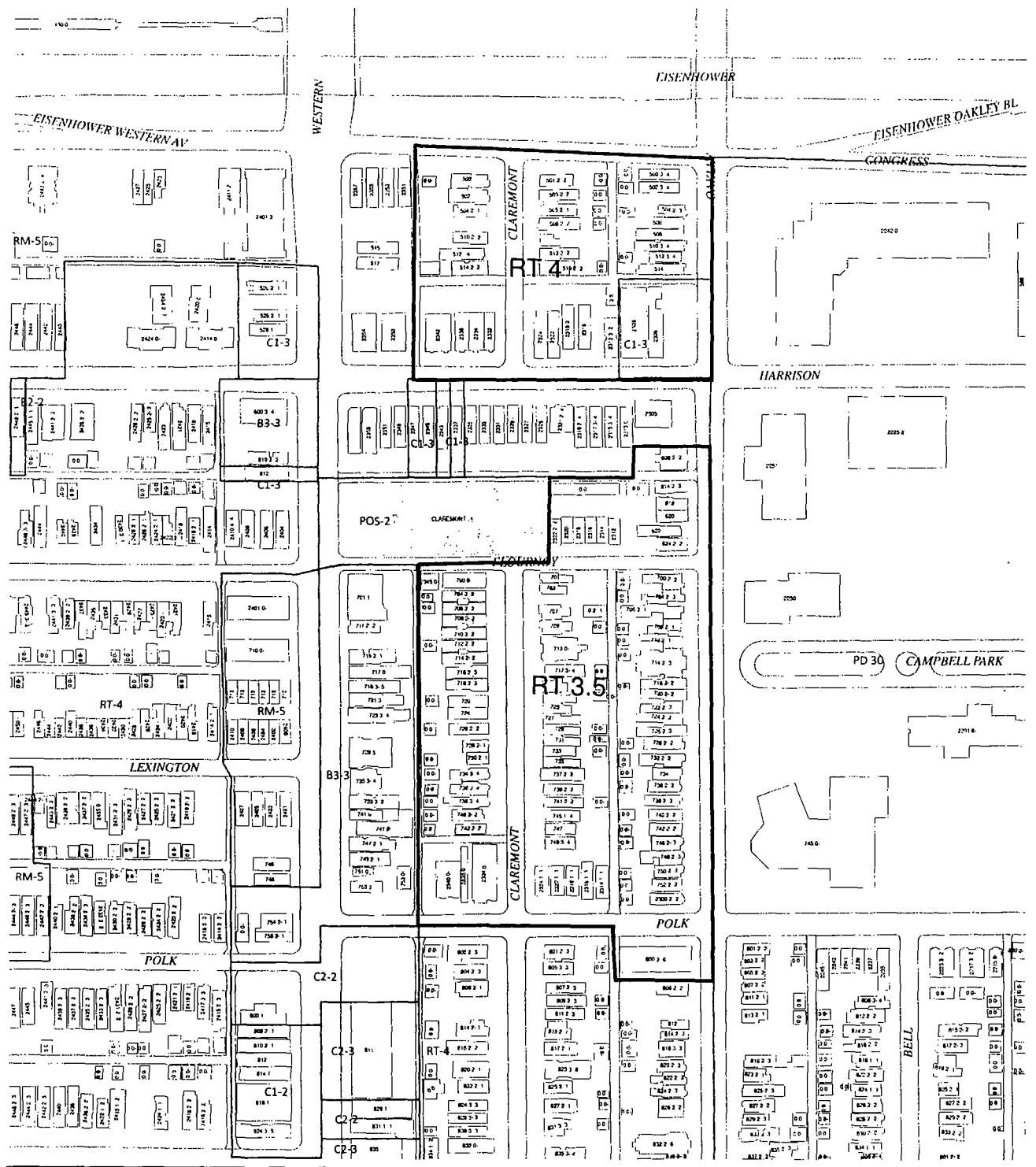
"A1"  
JOHNSTON'S SUB of Lots 3, 4, & 5 in Jameson's Sub of Lots 1 to 10 in Bowen's Sub of Lot 18 of Blk. 10 in Rockwell's Add to Chicago (see "A") Rec. Dec 14, 1876 Dec 114519

"A2"  
POWINS'S SUB of the S 141 ft. of that part N. of Monroe St. of Lots 3 & 4 in Blk. 9 of Rockwell's Add to Chicago (see "A") Rec. Jun 26, 1877 Dec 140355

"A3"  
SUB of Lot 6 and that part of Lot 5 lying S. of the S line of Adams St., all in Blk. 10 of Rockwell's Add to Chicago (see "A") Rec. Dec 19, 1879 Dec 240617

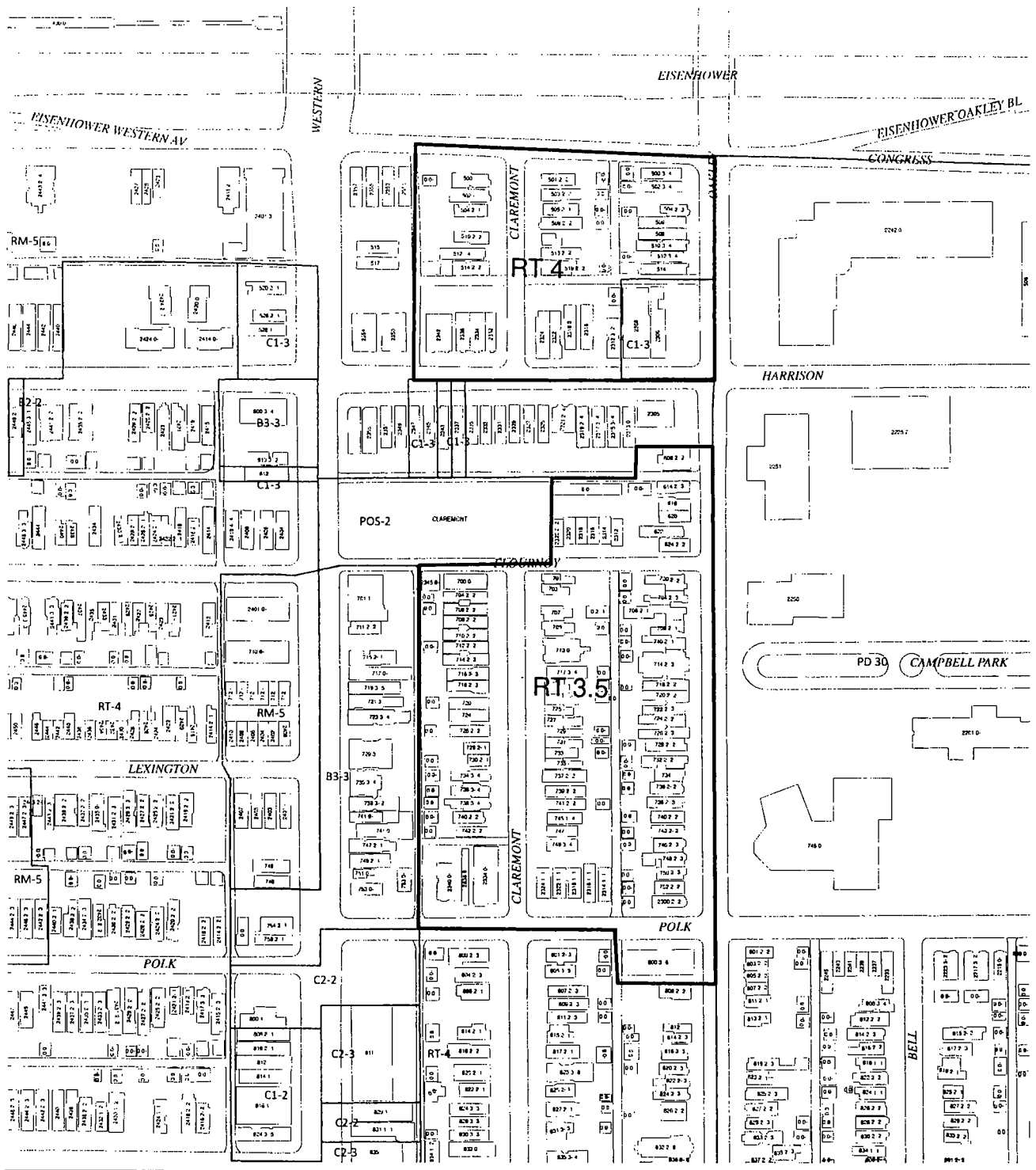
"A4"  
SUB of the N 1/2 of Lot 1 of Blk. 11 of Rockwell's Add to Chicago (see "A") Rec. Apr 29, 1881 Dec 121500





Proposed Zoning Changes





Proposed Zoning Changes

