



City of Chicago



Or2018-21

Office of the City Clerk

Document Tracking Sheet

Meeting Date:	1/17/2018
Sponsor(s):	Burnett (27)
Type:	Order
Title:	Issuance of permits for sign(s)/signboard(s) at 1330 W Fulton St
Committee(s) Assignment:	Committee on Zoning, Landmarks and Building Standards

CITY COUNCIL
COMMITTEE ON ZONING, LANDMARKS AND BUILDING STANDARDS

COUNCIL ORDER

RE: Approval of sign over 100 square feet in area or over 24 feet above grade

ORDERED, that the City Council hereby approves the following sign application submitted by:

Applicant*: 1330 W Fulton LLC

(* The Applicant is the owner of the real property or the business tenant of the real property. Do not list the sign contractor, sign erector, sign company or advertising entity in the above space.)

This Order approves the following sign in accordance with Municipal Code of Chicago Section 13-20-680:

Address of Sign: 1330 W Fulton Street, Chicago, IL 60607


Zoning District: PD 1306

DOB Sign Permit Application #: 100728916

Sign Details:

1. On-premise OR Off-premise
2. Static sign OR Dynamic-image display sign
3. Number of sign faces 1
4. Projecting over the public way No (Yes or No) If yes, Public Way Use #: _____
5. Dimensions: Length 5 feet 4 inches Height 11 feet 0 inches
Total square feet in area: 59 feet _____ inches
6. Height above grade: 24 feet 6 inches
7. Elevation (side of building or lot where the sign will be erected): West
8. Name of Sign Contractor/Erector: Poblocki Sign Company

To be legal, such sign shall comply with all provisions of Title 17 of the Chicago Municipal Code ("Zoning Ordinance") and all other provisions of the Municipal Code governing the permitting, construction and maintenance and removal of signs and sign structures. Failure of the applicant and the applicant's successors to comply shall be grounds for invalidation or revocation of the sign permit.

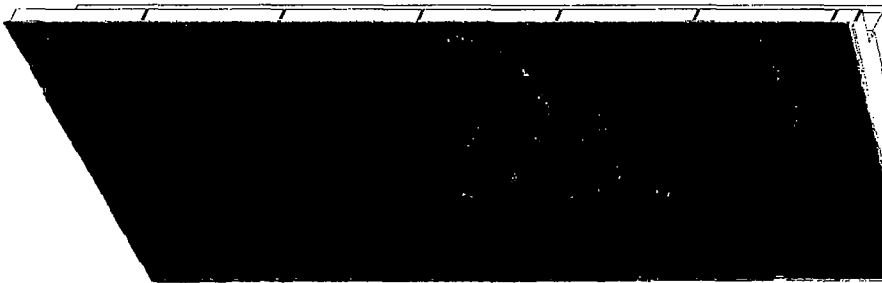
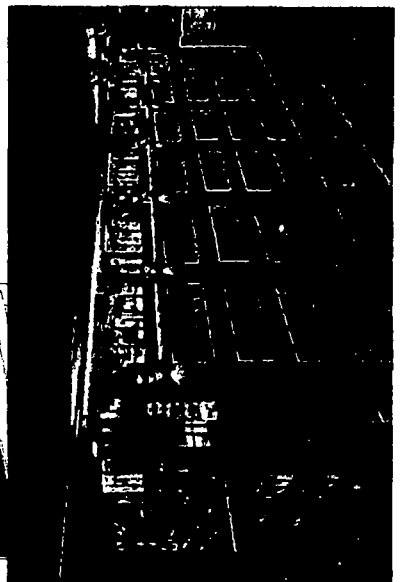
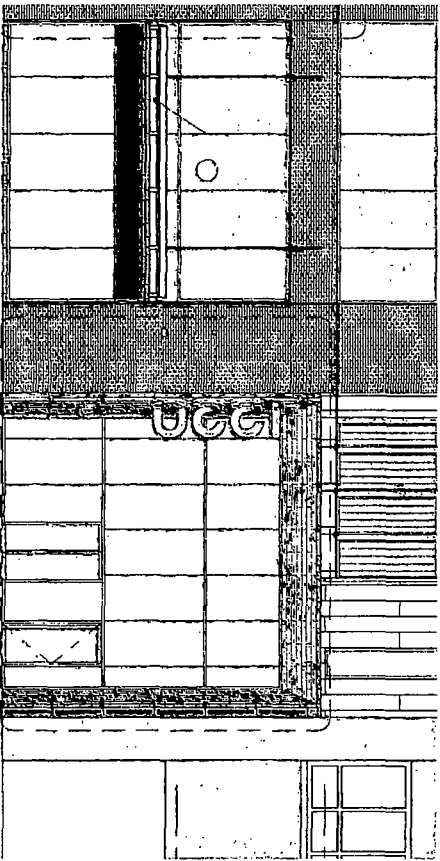
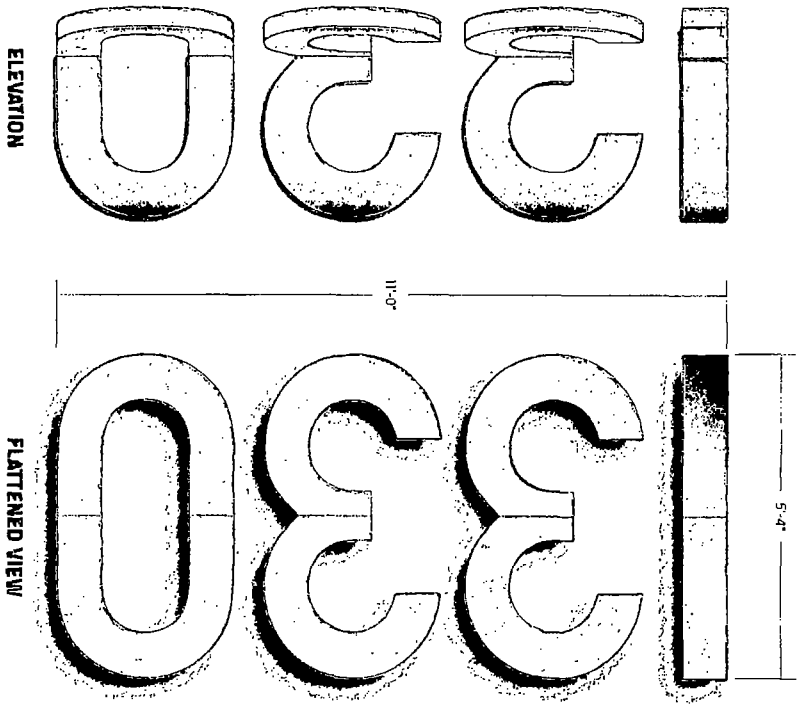

Alderman

27
Ward

Handwritten text, likely bleed-through from the reverse side of the page. The text is extremely faint and illegible due to the quality of the scan and the nature of the bleed-through. It appears to be several lines of text, possibly a list or a series of notes, but no specific words or numbers can be discerned.

SIGN SPECIFICATIONS

(A) - NON-ILLUMINATED LETTERS
 Description: Fabricated
 Material: 12 GA. Stainless Steel (316 alloy)
 Finish: Horizontal grain on face & returns
 Depth: 3 1/2"
 Installation: Flush to wall (-Mount)



P.O. Box 3901 • Milwaukee, WI 53234
 414.467.4800 • www.poblocki.com

This document is awarded by and for the exclusive use of the client. It is the property of Poblocki Sign Company and its employees. It is to be used only for the project and location specified. It is not to be reproduced, stored in a retrieval system, or transmitted in any form or by any means, electronic, mechanical, photocopying, recording, or by any information storage and retrieval system, without the prior written consent of Poblocki Sign Company. The client agrees to indemnify and hold Poblocki Sign Company harmless from and against all claims, damages, and expenses, including reasonable attorneys' fees, that may be incurred by Poblocki Sign Company, its employees, agents, or subcontractors, arising out of or from the use of this document, whether or not such claims, damages, or expenses are caused in whole or in part by the negligence of Poblocki Sign Company.

Project
 1330 West Fulton

Chicago, IL

Scale 1/2"=1'
 Original Page Size: 11" x 17"

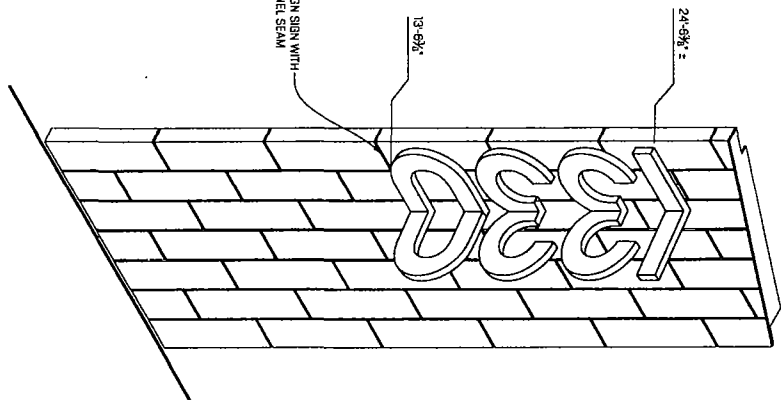
Notes

REVISIONS	BY	DATE
REV. DESCRIPTION		

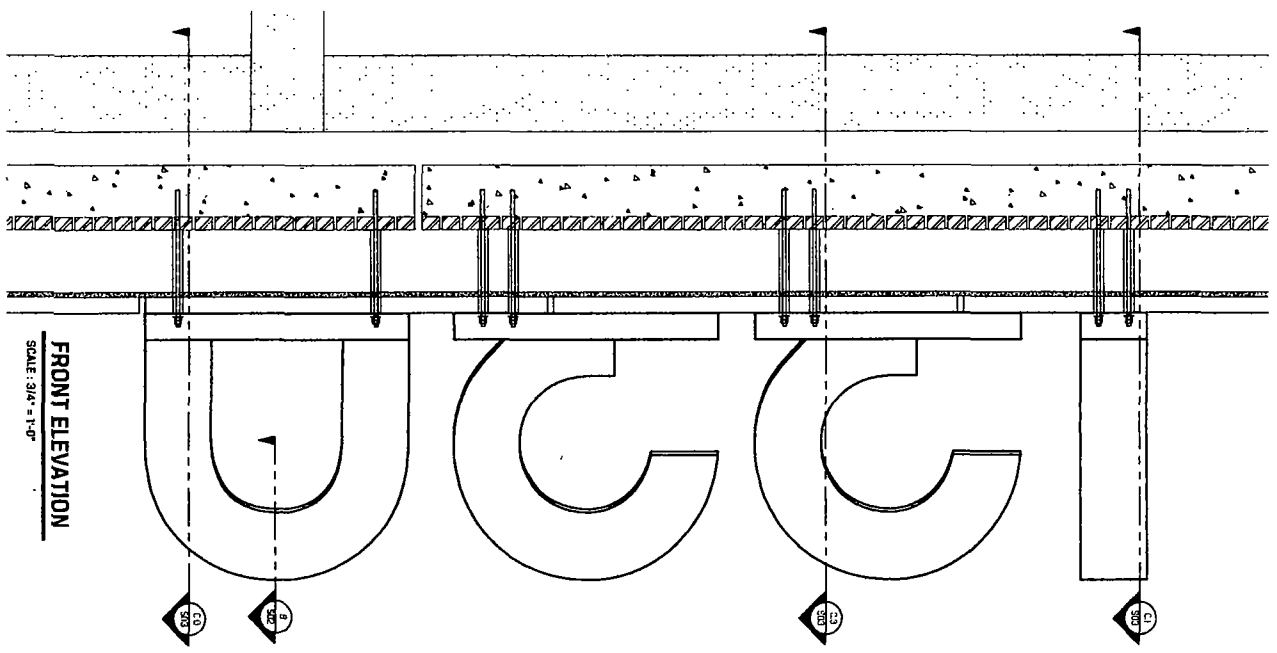
Rep: Dan Schumann
 Drawn By: J. Bouda
 Date: 08/21/17
 Sign Loc. No.:

NL-01
 Non-Ilc Letters
 Sign Type
74775 **CO1**
 Design
 Date: 11/17/17, Job No.

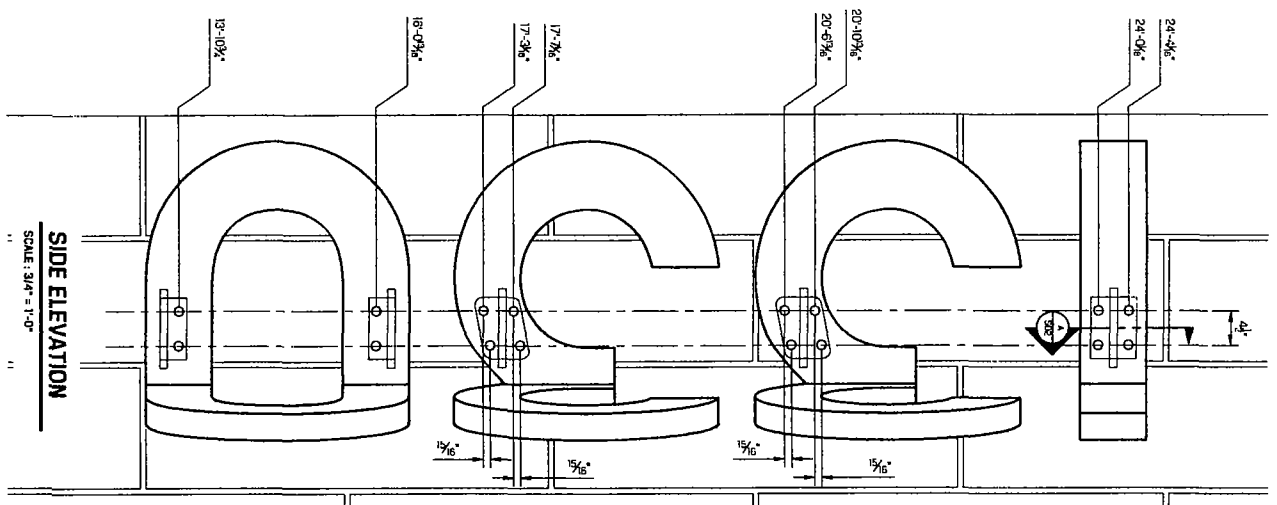
*NOTE: SEE DESIGN SKETCH FOR COLOR & COPY LAYOUTS
 DESIGNED PER CAB
 FINISH: 303
 SIGN TYPE: NL-01
 WEIGHT: 420 LBS



NW ELEVATION
 SCALE: 1/4" = 1'-0"



FRONT ELEVATION
 SCALE: 3/4" = 1'-0"



SIDE ELEVATION
 SCALE: 3/4" = 1'-0"



522 S. 70TH ST., MILWAUKEE, WI 53224
 414.453.4100 • www.poblogki.com

This document is created by using the information provided in the design sketch. The manufacturer is not responsible for any errors or omissions in this document. The manufacturer is not responsible for any damage to property or injury to persons caused by the use of this document. The manufacturer is not responsible for any damage to property or injury to persons caused by the use of this document. The manufacturer is not responsible for any damage to property or injury to persons caused by the use of this document.

Project
 1330 W. FULTON
 CHICAGO, IL

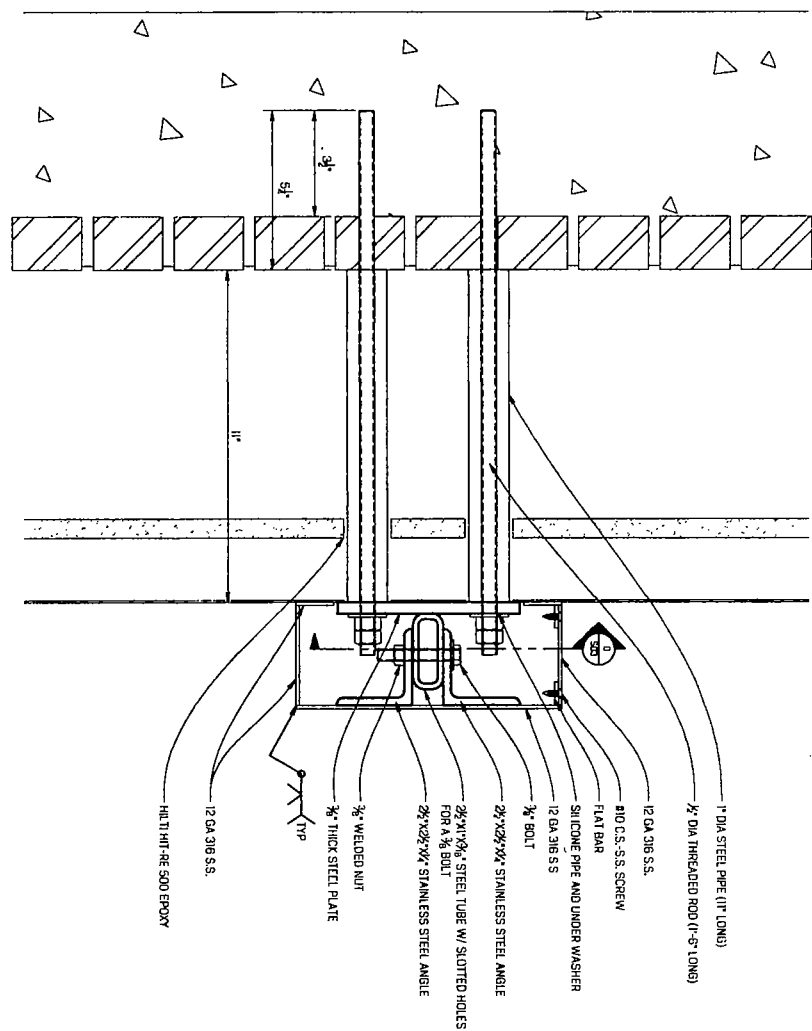
Scale: AS NOTED
 Original Page Size: 11" x 17"

Notes

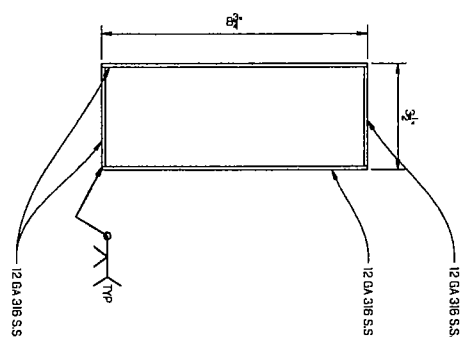
REVISIONS	BY	DATE
REV DESCRIPTION	X	X
X X	X	X

Rev. DATE S. Date Date 8.20.17
 Drawn By: KALEB JOHNSON
 Sign Log. No. NL-01
 Sign Type
 74775
 000-Project: 100 No
 S01
 Sheet

A SECTION DETAIL
SCALE: 3" = 1'-0"



B SECTION DETAIL
SCALE: 3" = 1'-0"



5275 S. 70th St., Milwaukee, WI 53224
414 433 4010 • www.pdrblocki.com

This document is owned by and the information contained herein is the property of PDRBLOCKI, Inc. It is to be used only for the project and location specified. It is to be returned to PDRBLOCKI, Inc. upon completion of the project. No part of this document may be reproduced or transmitted in any form or by any means, electronic, mechanical, photocopying, recording, or by any information storage and retrieval system, without the prior written permission of PDRBLOCKI, Inc. PDRBLOCKI, Inc. shall not be held responsible for any errors or omissions in this document. Actual product colors may vary from the print or digital image.

Project
1330 W. FULTON

CHICAGO, IL

Scale: AS NOTED
Original Page Size: 11" x 17"

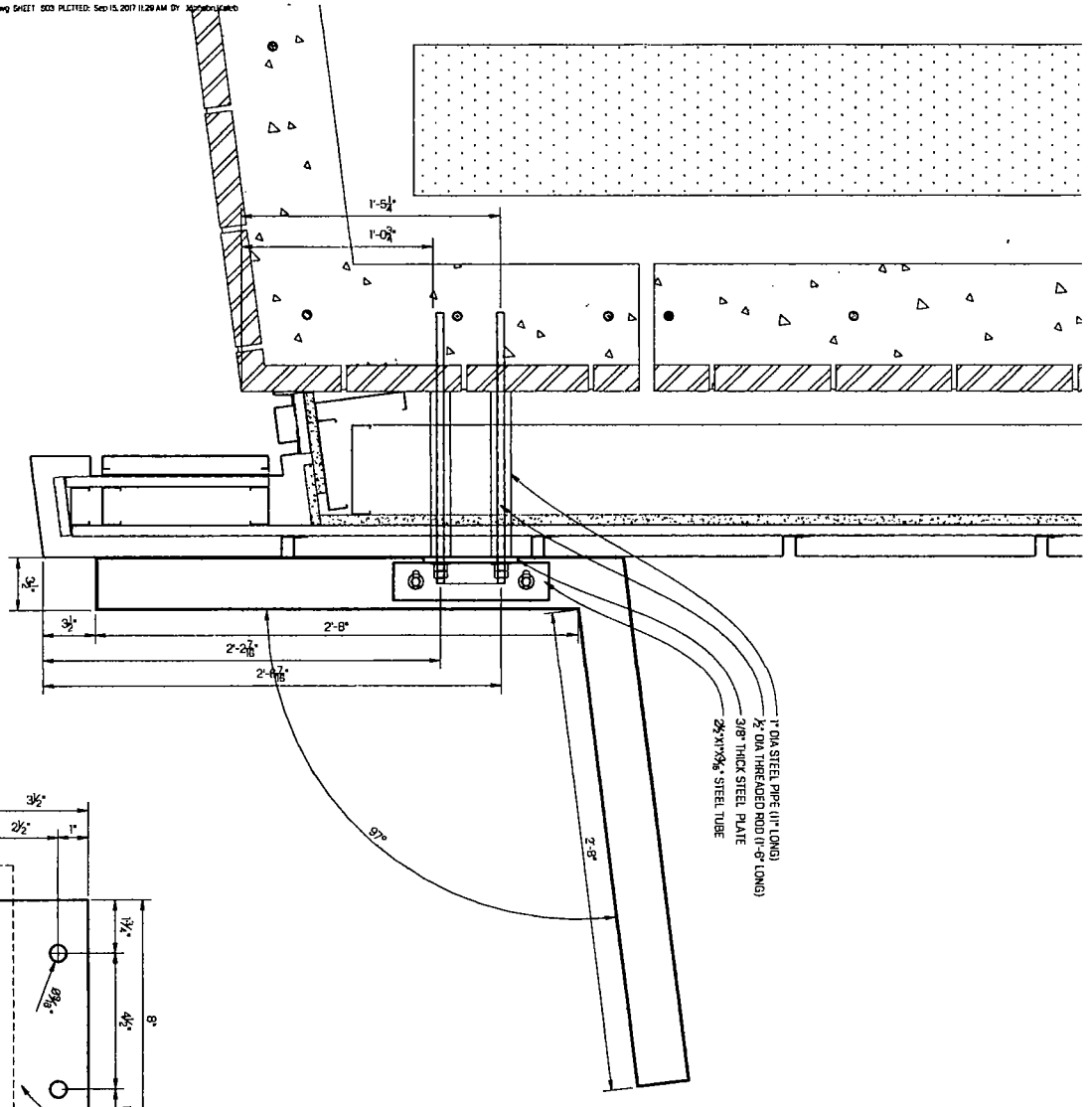
Notes

Revisions	BY	DATE
REV DESCRIPTION	X	X
X	X	X

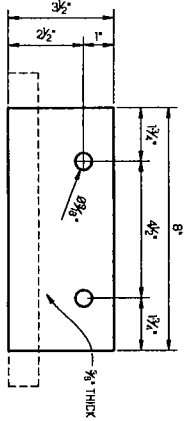
Des. By: **KALEB JOHNSON**
Dwg Date: **8.20.17**
Sheet Loc. No. **NL-01**

Sign Type
74775 **S02**
DPP-Project-322-NL-01 Sheet

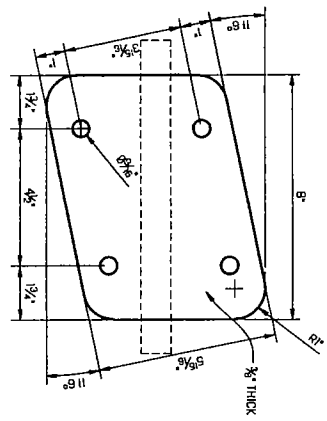
C SECTION DETAIL
SCALE: 1/2" = 1'-0"



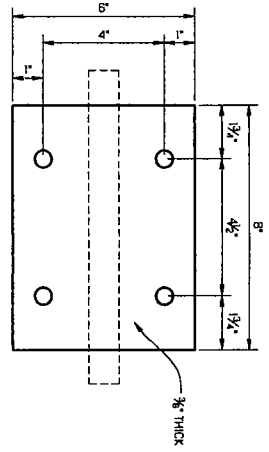
D.0 PLATE DETAIL
SCALE: 3" = 1'-0"
QTY (2)



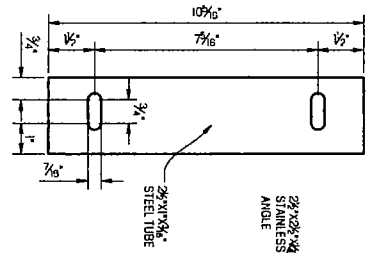
D.3 PLATE DETAIL
SCALE: 3" = 1'-0"
QTY (2)



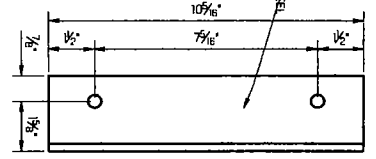
D.1 PLATE DETAIL
SCALE: 3" = 1'-0"
QTY (1)



C.1 STEEL TUBE DETAIL
SCALE: 3" = 1'-0"



C.2 STEEL ANGLE DETAIL
SCALE: 3" = 1'-0"



522 S. 70TH ST., WAUWATONA, WI 53214
414.453.0300 • www.pdblocki.com

This document is owned by and the information contained herein is the property of PDBLOCKI, LLC. It is to be used only for the project and location identified on the drawing. No part of this document may be reproduced, stored in a retrieval system, or transmitted in any form or by any means, electronic, mechanical, photocopying, recording, or by any information storage and retrieval system, without the prior written permission of PDBLOCKI, LLC. The user agrees to indemnify and hold PDBLOCKI, LLC harmless from and against all claims, damages, and expenses, including reasonable attorneys' fees, that may be incurred by PDBLOCKI, LLC as a result of the use of this document. Actual colors may vary from the printed color.

Project
1330 W. FULTON

CHICAGO, IL

Scale: AS NOTED
Original Page Size: 11" x 17"

Notes

Revisions	BY	DATE
REV. DESCRIPTION	X	X
X X	X	X

Rev. DATE: 09/15/17
Drawn by: PALEB JOHNSON
Sign/Doc. No.: NL-01

Sign Type: 74775
S03
QTY: 1
Sheet