



# City of Chicago



Or2015-403

Office of the City Clerk

## Document Tracking Sheet

<b>Meeting Date:</b>	7/29/2015
<b>Sponsor(s):</b>	Hairston (5)
<b>Type:</b>	Order
<b>Title:</b>	Issuance of permits for sign(s)/signboard(s) at 6700 S Jeffery Blvd
<b>Committee(s) Assignment:</b>	Committee on Zoning, Landmarks and Building Standards

Committee on Zoning, Landmarks and Building Standards

(signs)

ORDERED, That the Commissioner of Buildings is hereby directed to issue 1 sign permit to

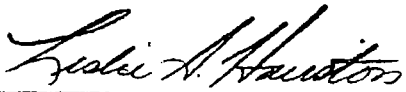
Corporate Identification Solutions  
5563 N Elston  
Chicago IL 60630

For the erection of one (1) freestanding sign over 24 feet in height and/or over 100 square feet (in area of one face) at:

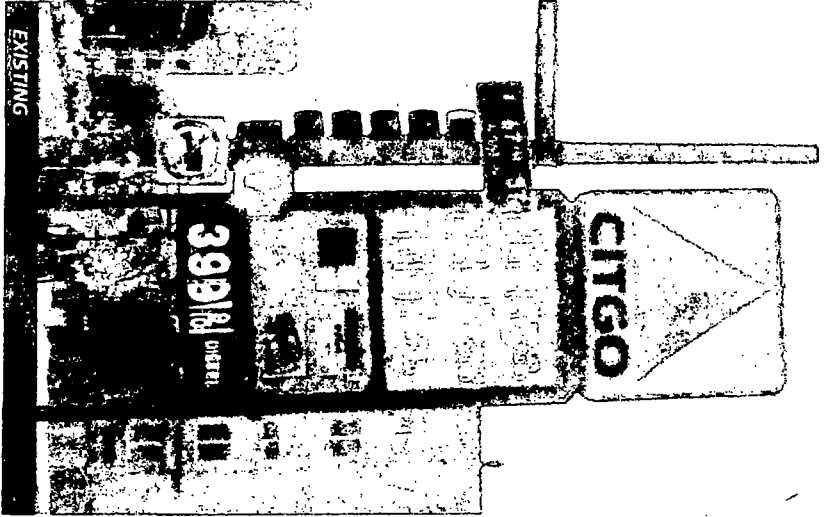
6700 S Jeffery Blvd.  
Chicago, IL 60649

#1	Dimensions	length	7 feet	height	15 feet 3 inches
		Height above grade/roof to top of sign			27 feet 0 inches
		Total Square Foot Area			107 square feet
		Elevation			North and South

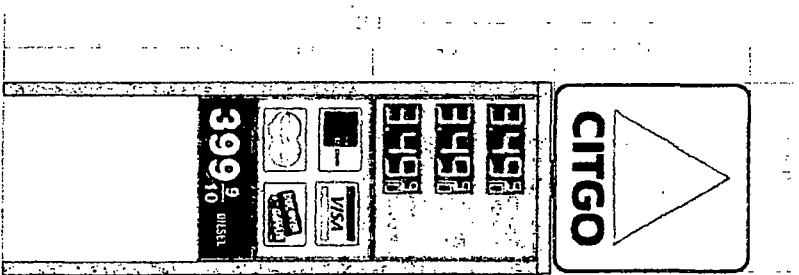
Such sign shall comply with all applicable provisions of TITLE 17 of the Chicago Zoning Ordinance and all other applicable provisions of the Municipal Code of the City of Chicago governing the construction and maintenance of outdoor signs, signboards and structures



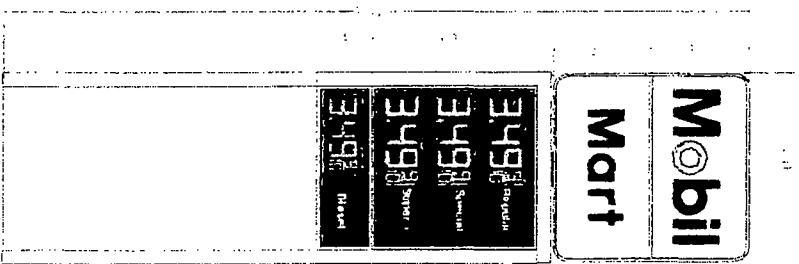
Leslie Hairston  
Alderman, 5th Ward



EXISTING

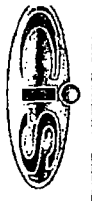


EXISTING SIGN  
136.66 SF



PROPOSED SIGN  
106.29 SF

- Re-use existing cabinet with new Mobil & Mart faces
- New divider bar
- Re-use cabinet and LED prices with new inserts
- Paint poles white
- New cabinet with 17" LED diesel prices



**CORPORATE IDENTIFICATION SOLUTIONS**

CONTACT: 312.460.1100  
WWW.CIS-SOLUTIONS.COM

PROJECT: CITGO  
LOCATION: CHICAGO, IL

DATE: 08/11  
SCALE: 1/8" = 1'-0"

CORPORATE IDENTIFICATION SOLUTIONS  
200 N. LAUREL ST. SUITE 200  
CHICAGO, IL 60610

THIS DRAWING IS THE PROPERTY OF CORPORATE IDENTIFICATION SOLUTIONS. IT IS TO BE USED ONLY FOR THE PROJECT AND LOCATION SPECIFICALLY IDENTIFIED HEREON. ANY REUSE OR MODIFICATION OF THIS DRAWING WITHOUT THE WRITTEN PERMISSION OF CORPORATE IDENTIFICATION SOLUTIONS IS STRICTLY PROHIBITED. THE CLIENT ASSUMES ALL RESPONSIBILITY FOR THE ACCURACY OF THE INFORMATION PROVIDED HEREON. CORPORATE IDENTIFICATION SOLUTIONS SHALL NOT BE RESPONSIBLE FOR ANY ERRORS OR OMISSIONS IN THIS DRAWING. © 2011 CORPORATE IDENTIFICATION SOLUTIONS. ALL RIGHTS RESERVED.