



# City of Chicago



O2015-3091

Office of the City Clerk

## Document Tracking Sheet

<b>Meeting Date:</b>	4/15/2015
<b>Sponsor(s):</b>	Smith (43)
<b>Type:</b>	Ordinance
<b>Title:</b>	Grant(s) of privilege in public way for Starbucks Coffee No. 22423
<b>Committee(s) Assignment:</b>	Committee on Transportation and Public Way

ORDINANCE  
Starbucks Coffee #22423  
Acct. No. 63414 - 167  
Permit No. 1115139

*Be It Ordained by the City Council of the City of Chicago:*

SECTION 1. Permission and authority are hereby given and granted to Starbucks Coffee #22423, upon the terms and subject to the conditions of this ordinance to maintain and use three (3) sign(s) projecting over the public right-of-way attached to its premises known as 211 W. Scott St..

Said sign structure(s) measures as follows; along W Scott:

Two (2) at six point five (6.5) feet in length, one point six seven (1.67) feet in height and thirteen point six seven (13.67) feet above grade level.

One (1) at five point two five (5.25) feet in length, two (2) feet in height and sixteen point five eight (16.58) feet above grade level.

The location of said privilege shall be as shown on prints kept on file with the Department of Business Affairs and Consumer Protection and the Office of the City Clerk.

Said privilege shall be constructed in accordance with plans and specifications approved by the Department of Transportation (Division of Project Development) and Zoning Department - Signs.

This grant of privilege in the public way shall be subject to the provisions of Section 10-28-015 and all other required provisions of the Municipal Code of Chicago.

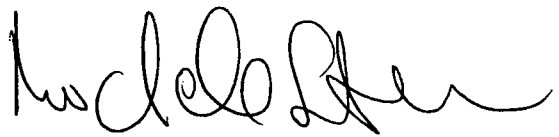
The grantee shall pay to the City of Chicago as compensation for the privilege #1115139 herein granted the sum of one hundred seventy-five (\$175.00) per annum in advance.

A 25% penalty will be added for payments received after due date.

The permit holder agrees to hold the City of Chicago harmless for any damage, relocation or replacement costs associated with damage, relocation or removal of private property caused by the City performing work in the public way.

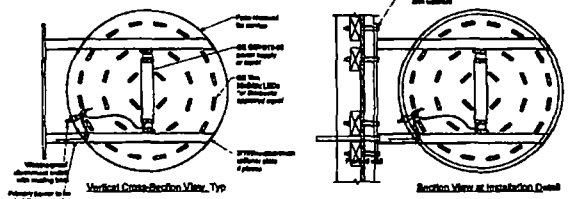
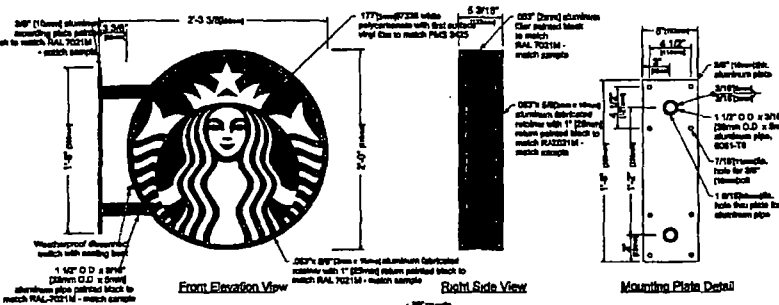
Authority herein given and granted for a period of five (5) years from and after Date of Passage.

Alderman



Michele Smith 43<sup>rd</sup> Ward

**24" DIA. BLADE SIGN**  
QTY-1



Size	Qty	Sq Ft	Vol	Wt	App
24" dia	1	4.50	120	0.85	

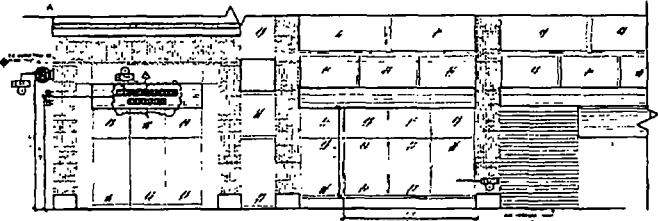
1. Based on Starbucks master art  
2. Based on contractor approval

**Sign Specifications**

- Cabinet:**
- 2024 aluminum filler with painted black to match RAL7021M.
  - 2024 x 6" aluminum fabricated register with 1" (25mm) return painted black to match RAL7021M
  - 177 97202 white polycarbonate with first surface vinyl to match PMS 3425
  - Interior aluminum surfaces of sign cabinet to be painted white Lazy Blue/White
  - All fasteners used in the assembly of internal components are coated to prevent corrosion
  - Internal structure of cabinet shall be per approved shop drawing
  - Graphic elements are internally illuminated using GE Tetra MiniLED LED system or Starbucks approved equal. LED's to be mounted on back panel with self-contained power supply. All electrical components are removable for service
- Support:**
- Support structure will be all welded aluminum pipe and plate construction painted black to match RAL7021M as per approved shop drawings and shall be integral to the sign cabinet.
- Regulatory:**
- Sign must meet all regulations in the National Electric Code as any local or state electrical codes
  - As per NEC 800.6, sign is equipped with a service disconnect switch.
  - Sign must be listed as an Electric Sign per Underwriters Laboratories UL48 and/or CMA and bear the appropriate UL, CUL or CE/Equivalent certification marks.
  - Primary power per NEC

These Drawings and Specifications are confidential and shall be the sole property of Starbucks Corporation, which is the owner of copyright in this work. They shall not be reproduced (in whole or part), shared with third parties or used in any manner on other projects or extensions to this project without the prior written consent of Starbucks Corporation.

This drawing is a Design Development Document. Site specific modifications made under the responsible charge of the Architect and/or Engineer-of-Record will be required prior to using this document for Bidding, Permitting, or Construction.



**NORTH ELEVATION**

**HILTON DISPLAYS**  
125 MILLER AVE. - GROUNDWELL BE BLDG  
P.O. BOX 253142 - # 846 243 2284  
www.hiltondisplays.com

OID 14-24445

JOB NAME:

Starbucks #22423

LOCATION:

211 West Scott  
Chicago, IL

CUSTOMER CONTACT:

Susan Arnold

SALES/TEAM / PM

Wayne Rhodes

DESIGNER:

Mark R

DWG. DATE:

5-14-14

REV. DATES:

6-12-14 CW

SCALE:

Not To Scale

FILE

2014\Starbucks\Chicago IL\14-24445\SB Chicago IL

DESIGN SPECIFICATIONS ACCEPTED BY:

BY CLIENT

SIGNED / DATE

BY ARCHITECT

BY ENGINEER

BY CONTRACTOR

BY MANUFACTURER

BY OTHER

BY DATE

BY DATE

BY DATE

BY DATE

BY DATE

BY DATE

BY DATE

BY DATE

BY DATE

BY DATE