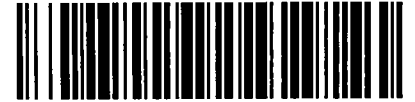




# City of Chicago

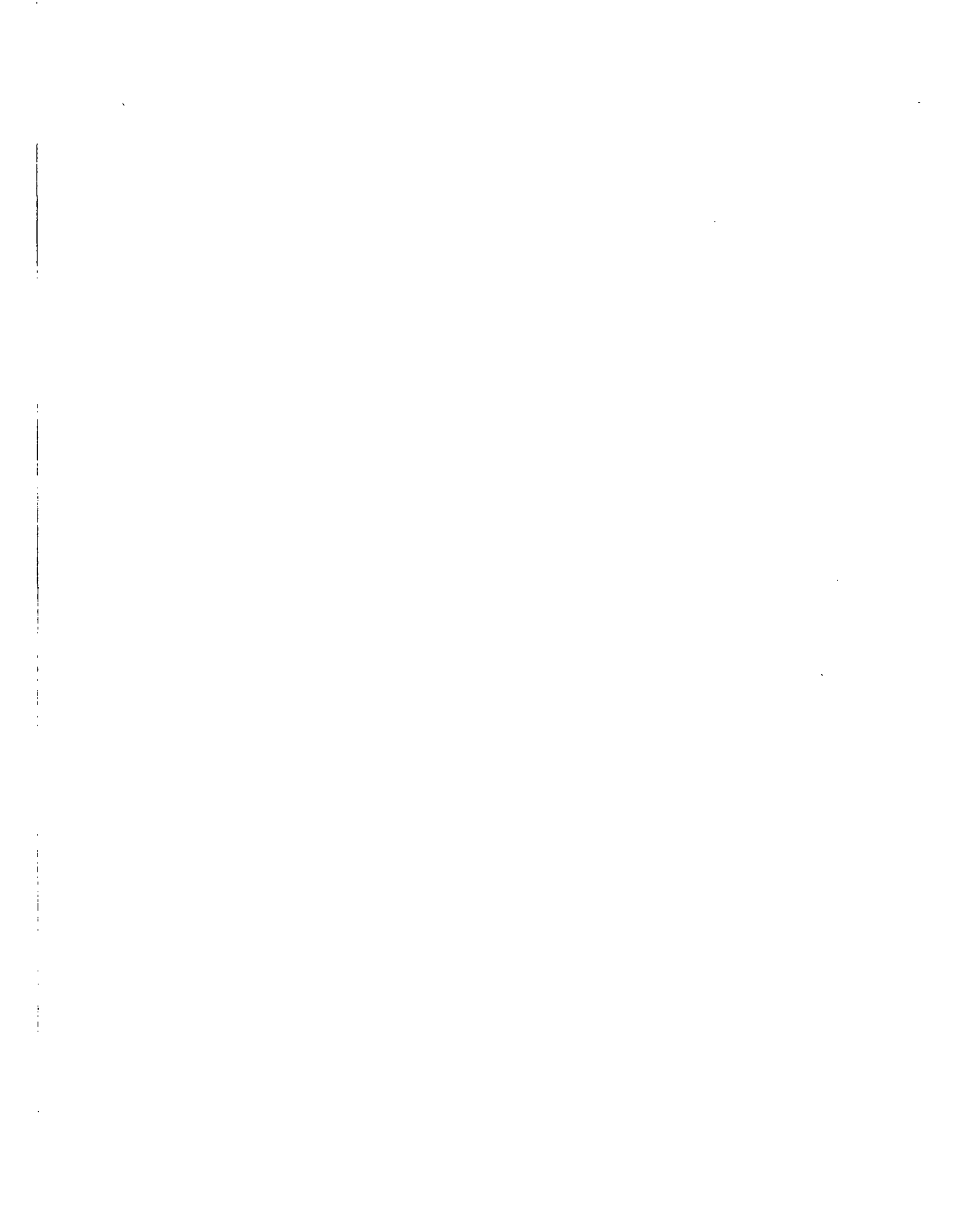


O2016-4486

Office of the City Clerk

## Document Tracking Sheet

<b>Meeting Date:</b>	5/18/2016
<b>Sponsor(s):</b>	Reilly (42)
<b>Type:</b>	Ordinance
<b>Title:</b>	Grant(s) of privilege in public way for Target Store T-3207
<b>Committee(s) Assignment:</b>	Committee on Transportation and Public Way



ORDINANCE  
TARGET STORE T-3207  
Acct. No. 15538 - 24  
Permit No. 1119977

*Be It Ordained by the City Council of the City of Chicago:*

SECTION 1. Permission and authority are hereby given and granted to TARGET STORE T-3207, upon the terms and subject to the conditions of this ordinance to maintain and use three (3) sign(s) projecting over the public right-of-way attached to its premises known as 401 E. Illinois St..

Said sign structure(s) measures as follows; along ILLINOIS (BLADE):

One (1) at three point two five (3.25) feet in length, two point five (2.5) feet in height and twelve (12) feet above grade level.

Said sign structure(s) measures as follows; along ILLINOIS:

One (1) at six (6) feet in length, six (6) feet in height and twenty-two (22) feet above grade level.

Said sign structure(s) measures as follows; along MCCLURG:

One (1) at six (6) feet in length, six (6) feet in height and twenty-two (22) feet above grade level.

The location of said privilege shall be as shown on prints kept on file with the Department of Business Affairs and Consumer Protection and the Office of the City Clerk.

Said privilege shall be constructed in accordance with plans and specifications approved by the Department of Transportation (Division of Project Development) and Zoning Department - Signs.

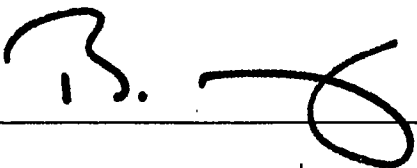
This grant of privilege in the public way shall be subject to the provisions of Section 10-28-015 and all other required provisions of the Municipal Code of Chicago.

The grantee shall pay to the City of Chicago as compensation for the privilege #1119977 herein granted the sum of seven hundred (\$700.00) per annum in advance.

A 25% penalty will be added for payments received after due date.

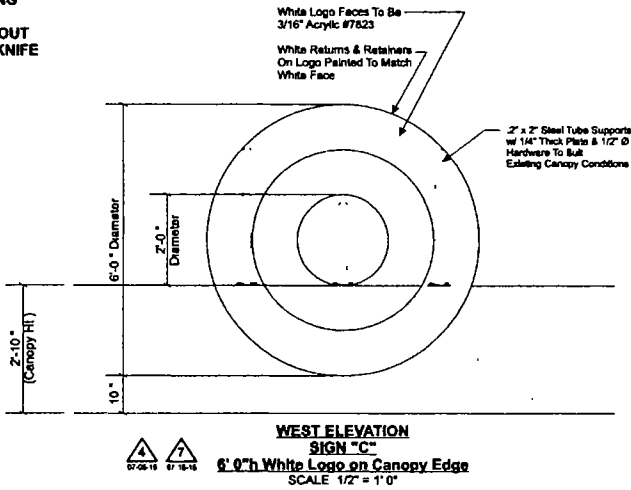
The permit holder agrees to hold the City of Chicago harmless for any damage, relocation or replacement costs associated with damage, relocation or removal of private property caused by the City performing work in the public way.

Authority herein given and granted for a period of five (5) years from and after Date of Passage.

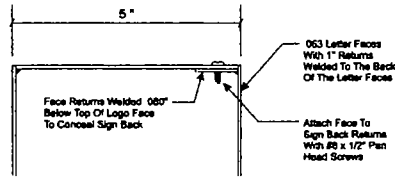
Alderman  \_\_\_\_\_  
Brendan Reilly 42<sup>nd</sup> Ward

Handwritten scribbles or marks at the bottom of the page.

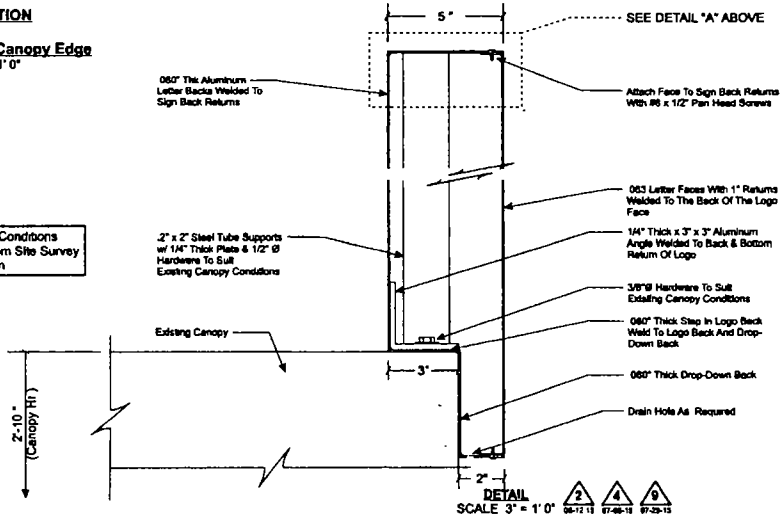
ENGINEERING  
SHOP  
VINYL / LAYOUT  
ROUTING / KNIFE



SQUARE FOOTAGE- 36.0



DETAIL "A"  
HALF SCALE



NOTE All Dimensions And Field Conditions To Be Verified And Confirmed From Site Survey Prior To Releasing For Fabrication

PERMITS  
ONLY

**ELECTRICAL LOAD**  
6' LOGO  
(5) Amps @ 120 Volts  
**ELECTRICAL SYMBOLS**  
(1) 20 Amp/120 Volt Circuits

- STANDARD WALL SIGN NOTES.**
- 1 Sufficient Primary Circuit in Vicinity Of Sign By Others
  - 2 Final Primary Hook-Up To The Power Distribution Board By Others
  - 3 Sign Shall Be U.L. Listed
  - 4 Mounting Hardware By Sign Installer
  - 5 This Sign has been Designed with the Criteria as set forth in the IBC 2003 & IBC 2006 The Design Meets or Exceeds those Requirements for the Geographical Location in Which it is to be Erected

Note: This sign is intended to be installed in accordance with the requirements of Article 600 of the National Electrical Code and/or other applicable local codes. This includes proper grounding and bonding of the sign.

PHILADELPHIASIGN  
ADVANCED PERMANENT SIGNAGE SOLUTIONS

707 West Spring Garden Street  
Philadelphia, New Jersey 08106

Phone: 610.229.1460  
Fax: 610.229.8898  
www.philadelphiaesign.com

---

CUSTOMER  
**TARGET**

JOB NUMBER  
**T3207**

---

SIGN TYPE  
**Various**

---

LOCATION  
401 E. Illinois Street  
Chicago, IL 60611

---

DATE  
**04/23/2015**

---

DRAWN BY  
**JTR**

---

REVISION  
Number 9 Date 07/29/2015 By JTR

---

SHEET  
**6 OF 14**

---

DWG NUMBER  
**B60071**

---

ENGINEER SEAL

---

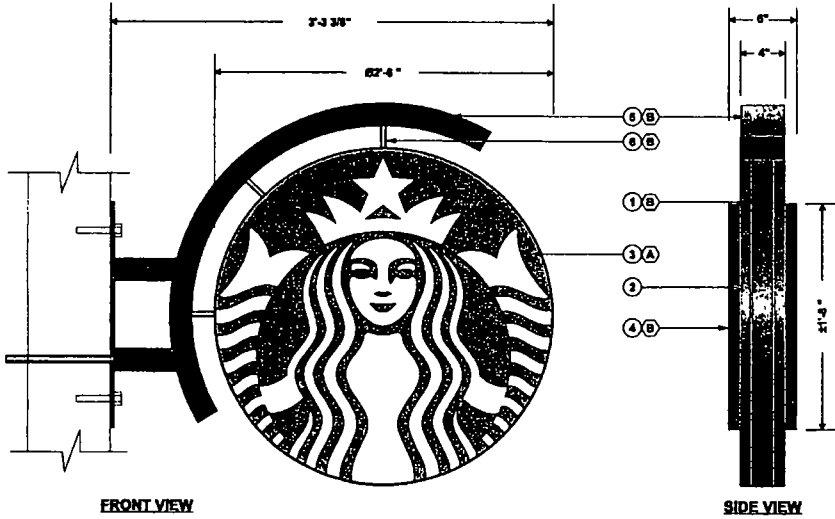
MAX DESIGN WIND SPEED 90 MPH  
EXPOSURE C

---

THIS IS AN ORIGINAL UNREPRODUCED DRAWING CREATED BY PHIC. IT IS IDENTIFIED FOR YOUR PROTECTION. USE IN CONJUNCTION WITH A PROJECT SET. BE PLANNED FOR YOU BY PHIC. IT IS NOT TO BE REPRODUCED OR COPIED WITHOUT THE WRITTEN PERMISSION OF PHIC. IT IS NOT TO BE USED, COPIED, REPRODUCED, OR EXHIBITED IN ANY MANNER.



ENGINEERING  
SHOP  
VINYL / LAYOUT  
ROUTING / KNIFE



1	FABRICATED ALUMINUM CABINET
2	1" BLACK TRIM
3	3/16" THK WHITE 7328 POLYCARBONATE FACE WITH VINYL APPLIED ON FIRST SURFACE
4	SUPPORT ARMS WITH MOUNTING PLATE
5	FABRICATED ALUMINUM CHANNEL
6	RIGID CONDUIT WITH ALUMINUM PIPE
*	ILLUMINATED WITH LEDS

1A	COLORED
A	HOLLY GREEN VINYL #3630-76
B	PAINTED BLACK



**PHILADELPHIASIGN**  
CREATING THE WORLD'S BEST SIGNS TO LIVE

707 West Spring Garden Street  
Philadelphia, New Jersey 19107  
Phone: 215.222.1422  
Fax: 215.222.2249  
www.philadelphiasign.com

<b>CUSTOMER</b>	TARGET
<b>JOB NUMBER</b>	T3207
<b>SIGN TYPE</b>	Various
<b>LOCATION</b>	435 E Illinois Street Chicago, IL 60611
<b>DATE</b>	04/23/2015
<b>DRAWN BY</b>	JTR
<b>REVISION</b>	Number 0 Date 07/21/2015 By JTR
<b>SHEET</b>	13 OF 14
<b>DWG NUMBER</b>	B60071
<b>ENGINEER SEAL</b>	

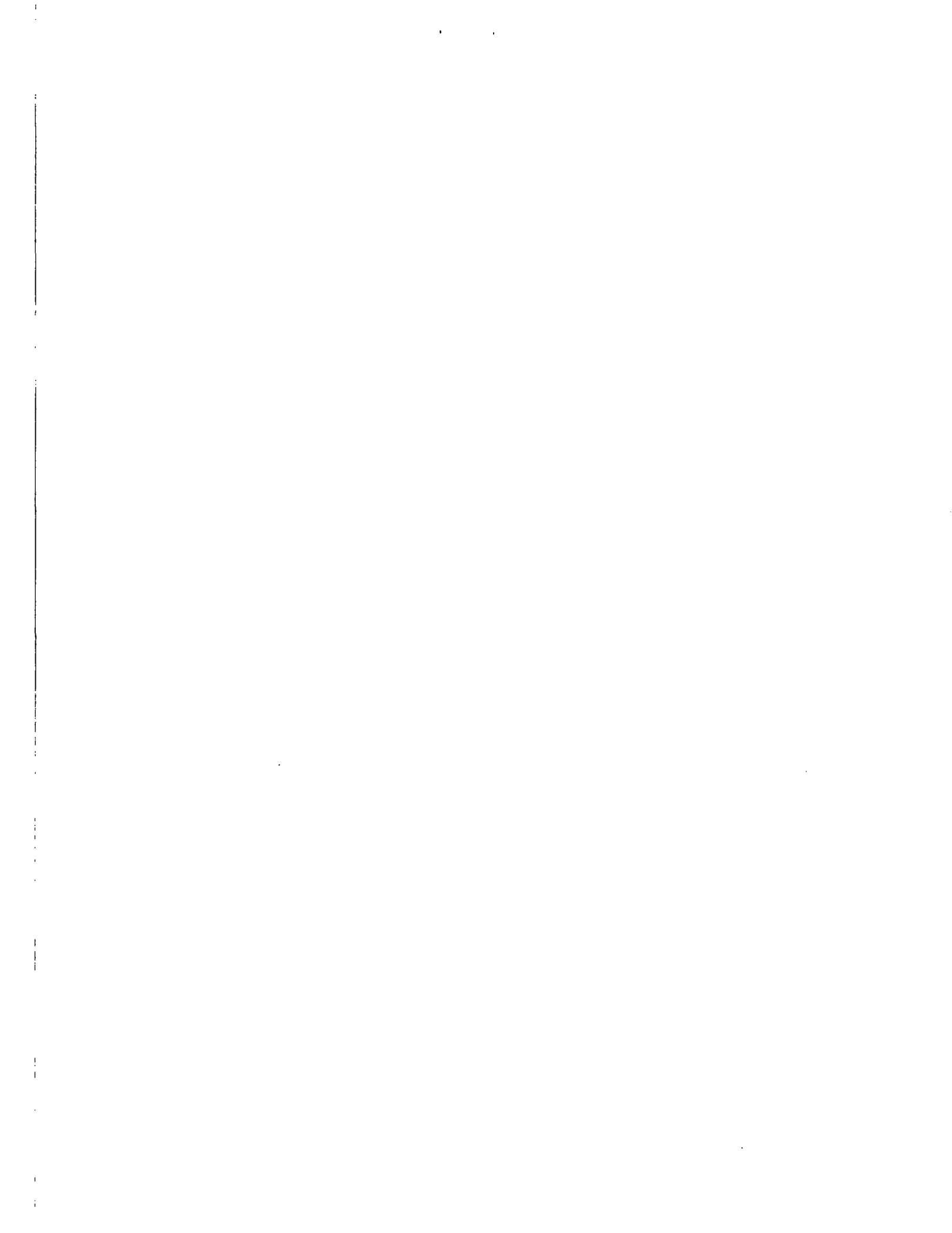
MAX DESIGN WIND SPEED 90 MPH  
EXPOSURE C

THIS IS AN UNPUBLISHED ENGINEERING DRAWING. IT IS CREATED FOR YOUR PROJECT. USE OR REPRODUCTION OF THIS PRODUCT IS PROHIBITED FOR YOU BY PHIL. IT IS NOT TO BE REPRODUCED OR TRANSMITTED IN ANY FORM OR BY ANY MEANS, ELECTRONIC OR MECHANICAL, INCLUDING PHOTOCOPYING, RECORDING, OR BY ANY INFORMATION STORAGE AND RETRIEVAL SYSTEM.

PERMITS  
ONLY

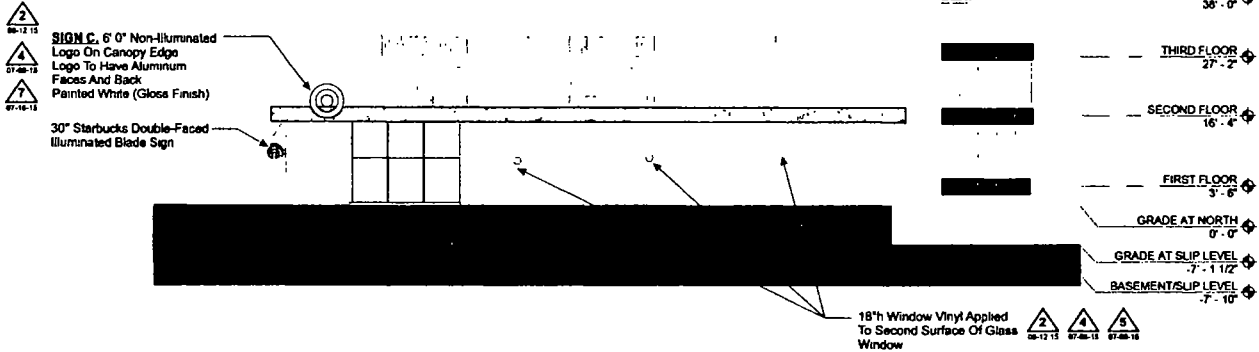
Note: This sign is intended to be installed in accordance with the requirements of Article 600 of the National Electrical Code and/or other applicable local codes. This includes proper grounding and bonding of the sign.







ENGINEERING  
SHOP  
VINYL / LAYOUT  
ROUTING / KNIFE



Note: This sign is intended to be installed in accordance with the requirements of Article 600 of the National Electrical Code and/or other applicable local codes. This includes proper grounding and bonding of the sign.

PERMITS  
ONLY

NOTE: All Dimensions And Field Conditions To Be Verified And Confirmed From Site Survey Prior To Releasing For Fabrication



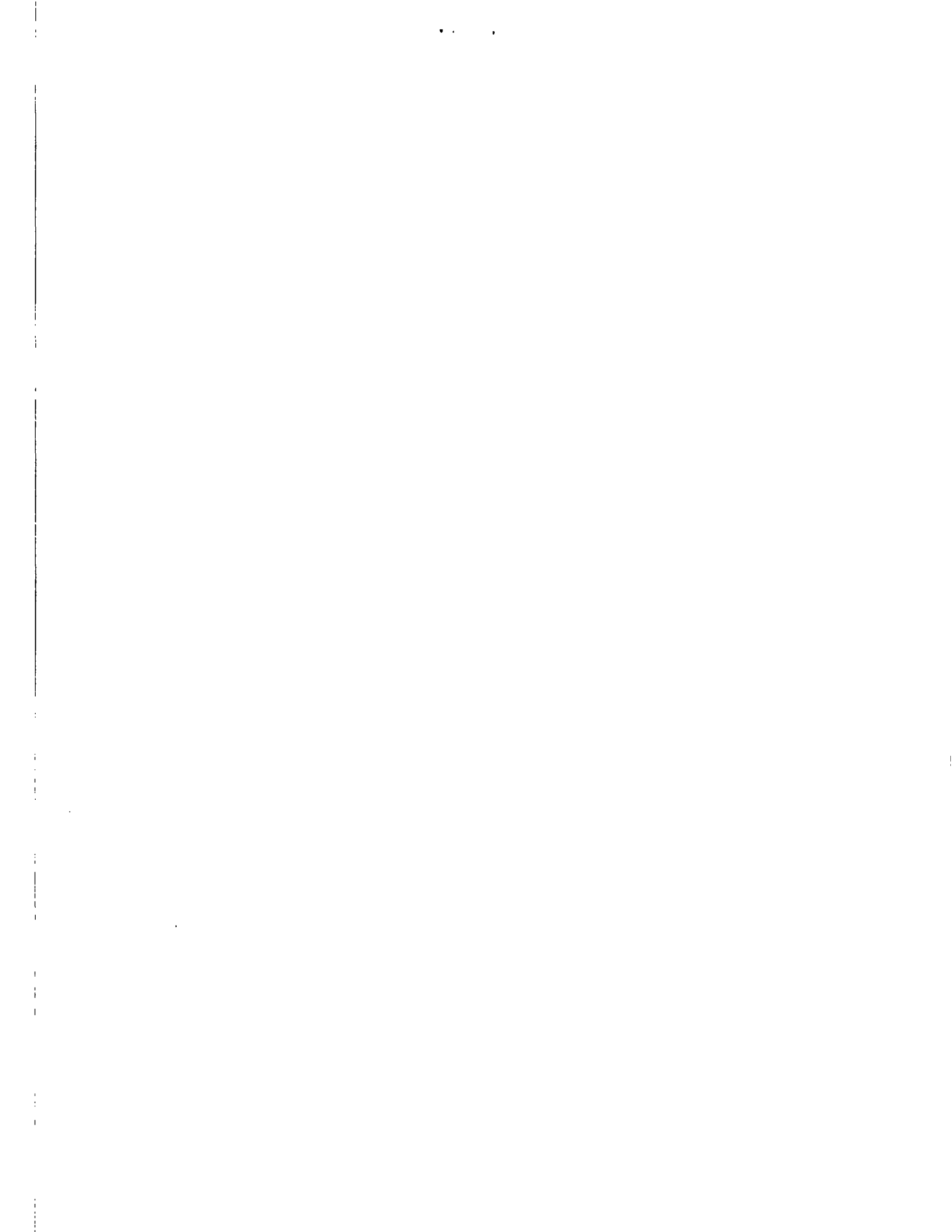
PHILADELPHIASIGN  
ADVANCING THE WORLD'S LEADING SIGNS

787 West Spring Garden Street  
Philadelphia, New Jersey 08105  
Phone: 215.229.1400  
Fax: 215.229.6500  
www.philadelphiasign.com

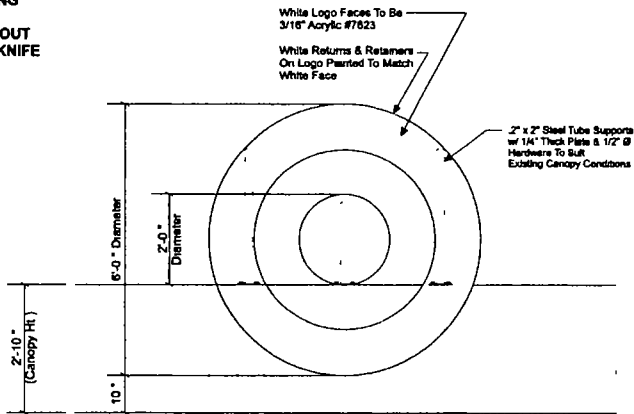
CUSTOMER	
TARGET	
JOB NUMBER	
T3207	
SIGN TYPE	
Various	
LOCATION	
435 E Illinois Street Chicago, IL 60611	
DATE	
04/23/2015	
DRAWN BY	
JTR	
REVISION	By
Number	Date
8	07/21/2015
SHEET	
2 OF 14	
DWG NUMBER	
B60071	
ENGINEER SEAL	

MAX DESIGN WIND SPEED 90 MPH  
EXPOSURE C

THIS IS AN ORIGINAL, UNAPPROVED DRAWING  
CREATED BY PHCI. IT IS IDENTIFIED FOR YOUR  
PERSONAL USE IN CONNECTION WITH A PROJECT.  
IT IS NOT TO BE SHOWN TO ANYONE OUTSIDE YOUR  
ORGANIZATION NOR IS IT TO BE COPIED, REPRODUCED,  
OR EXHIBITED IN ANY MANNER.



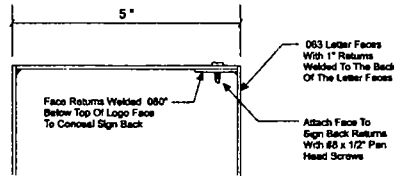
**ENGINEERING  
SHOP  
VINYL / LAYOUT  
ROUTING / KNIFE**



**NORTH ELEVATION  
SIGN "B"  
6' 0" h White Logo on Canopy Edge  
SCALE 1/2" = 1' 0"**



SQUARE FOOTAGE: 36.0



**DETAIL "A"  
HALF SCALE**

**PERMITS  
ONLY**

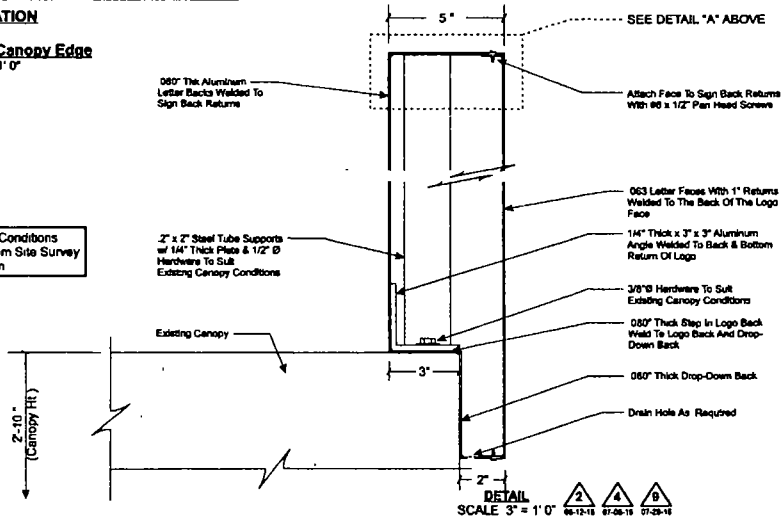
**ELECTRICAL LOAD  
6' LOGO  
(5) Amps @ 120 Volts  
ELECTRICAL REQMTS  
(1) 20 Amp/120 Volt Circuits**

**NOTE: All Dimensions And Field Conditions  
To Be Verified And Confirmed From Site Survey  
Prior To Releasing For Fabrication**

**STANDARD WALL SIGN NOTES:**

- 1 Sufficient Primary Circuit In Vicinity Of Sign By Others
- 2 Final Primary Hook-Up To The Power Distribution Board By Others
- 3 Sign Shall Be U.L. Listed
- 4 Mounting Hardware By Sign Installer
- 5 This Sign has been Designed with the Criteria as set forth in the IBC 2003 & IBC 2006 The Design Meets or Exceeds those Requirements for the Geographical Location in Which it is to be Erected

Note: This sign is intended to be installed in accordance with the requirements of Article 600 of the National Electrical Code and/or other applicable local codes. This includes proper grounding and bonding of the sign.



**DETAIL  
SCALE 3" = 1' 0"**



**PHILADELPHIASIGN**  
BRINGING THE WORLD'S BEST TO LIFE

787 West Spring Garden Street  
Philadelphia, New Jersey 08103  
Phone: 610.829.1480  
Fax: 610.829.2540  
www.philadelphiasign.com

**CUSTOMER**

**TARGET**

**JOB NUMBER**

**T3207**

**SIGN TYPE**

**Various**

**LOCATION**

401 E. Illinois Street  
Chicago, IL 60611

**DATE**

**04/23/2015**

**DRAWN BY**

**JTR**

**REVISION**

Number	Date	By
0	07/20/2015	JTR

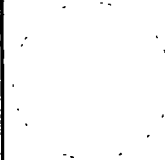
**SHEET**

**5 OF 14**

**DWG NUMBER**

**B60071**

**ENGINEER SEAL**



**MAX DESIGN WIND SPEED 80 MPH  
EXPOSURE C**

THIS IS AN ENGINEER DEVELOPED DESIGN. CREATION BY PHOENIX. IT IS SUBMITTED FOR YOUR PERUSAL AND IN CONNECTION WITH A PROJECT. YOUR PLANS FOR THIS PROJECT IS NOT TO BE CONSIDERED AS ANY OTHER OFFICIAL. THESE CONSTRUCTION NOT TO BE USED FOR ANY OTHER PROJECT, REPRODUCTION, OR DISTRIBUTION IN ANY MANNER.

