



City of Chicago



O2016-1092

Office of the City Clerk

Document Tracking Sheet

Meeting Date:	2/10/2016
Sponsor(s):	Tunney (44)
Type:	Ordinance
Title:	Grant(s) of privilege in public way for J. Crew
Committee(s) Assignment:	Committee on Transportation and Public Way

ORDINANCE
J.Crew
Acct. No. 8673 - 4
Permit No. 1120950

Be It Ordained by the City Council of the City of Chicago:

SECTION 1. Permission and authority are hereby given and granted to J.Crew, upon the terms and subject to the conditions of this ordinance to maintain and use one (1) sign(s) projecting over the public right-of-way attached to its premises known as 3423 N. Southport Ave..

Said sign structure(s) measures as follows; along W. Newport Avenue:
One (1) at two point five (2.5) feet in length, one point two five (1.25) feet in height and nine point five eight (9.58) feet above grade level.

The location of said privilege shall be as shown on prints kept on file with the Department of Business Affairs and Consumer Protection and the Office of the City Clerk.

Said privilege shall be constructed in accordance with plans and specifications approved by the Department of Transportation (Division of Project Development) and Zoning Department - Signs.

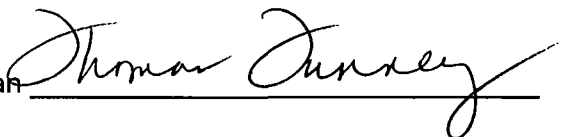
This grant of privilege in the public way shall be subject to the provisions of Section 10-28-015 and all other required provisions of the Municipal Code of Chicago.

The grantee shall pay to the City of Chicago as compensation for the privilege #1120950 herein granted the sum of one hundred (\$100.00) per annum in advance.

A 25% penalty will be added for payments received after due date.

The permit holder agrees to hold the City of Chicago harmless for any damage, relocation or replacement costs associated with damage, relocation or removal of private property caused by the City performing work in the public way.

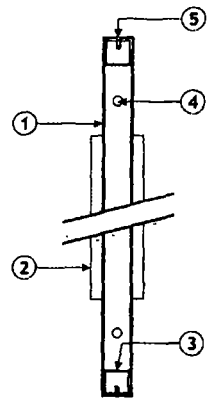
Authority herein given and granted for a period of five (5) years from and after Date of Passage.

Alderman 
Thomas Tunney 44th Ward

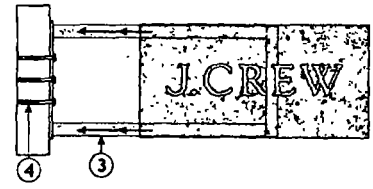
D BLADE SIGN - ELEVATION
Scale: 1" = 1'-0"



BLADE SIGN - MOUNTING FRAME DETAIL
Scale: N.T.S.



BLADE SIGN - MOUNTING FRAME DETAIL
Scale: N.T.S.



SIGN DETAILS

- 1 15" x 30" x 3" DEEP, FABRICATED ALUMINUM SIGN BOX PAINTED MATTE BLACK BOX WILL SLIDE OVER MOUNTING FRAME
- 2 1/2" THICK, ROUTED ACRYLIC LETTERS PAINTED WHITE AND SECURED TO BOTH SIDES OF BOX WITH TAPE AND SILICONE
- 3 1 3/4" SQUARE ALUMINUM FRAMING WITH MOUNTING PLATE WELDED TO END
- 4 FRAME MOUNTS FLUSH TO BRICK STOREFRONT WITH TAPCON SCREWS IN MOUNTING PLATE
- 5 BOX TO SLIDE OVER FRAMING AND SECURE ON TOP AND BOTTOM RETURNS WITH COUNTERSUNK SCREWS PAINTED TO MATCH BOX

Ruggles
SIGN

101 Kuhlman Blvd
PO Box 349
Versailles, KY 40383
859 879 1199

J.CREW

Store 820
Space

3423 N. SOUTHPORT AVENUE
CHICAGO, IL 60637

This sign is intended to be installed in accordance with the requirements of Article 602 of the National Electrical Code and/or other applicable local codes. This includes proper grounding and bonding of the sign.

RUGGLES SIGN DOES NOT PROVIDE PRIMARY ELECTRICAL TO SIGN LOCATION



Submittal Date: 09/01/15
Plan Issue/Rev Date:
Acct Rep: Remal Subramaniam
Designer: Jason Williams

REVISIONS		
r1	09/14/15	r6
r2	10/13/15	r7
r3	11/20/15	r8
r4		r9
r5		r10