



# City of Chicago



O2019-4914

Office of the City Clerk

## Document Tracking Sheet

<b>Meeting Date:</b>	6/12/2019
<b>Sponsor(s):</b>	Smith (43)
<b>Type:</b>	Ordinance
<b>Title:</b>	Grant(s) of privilege in public way for Bare Tattoo & Hair Removal
<b>Committee(s) Assignment:</b>	Committee on Transportation and Public Way

ORDINANCE  
BARE TATTOO & HAIR REMOVAL  
Acct. No. 454773 - 1  
Permit No. 1137139

*Be It Ordained by the City Council of the City of Chicago:*

SECTION 1. Permission and authority are hereby given and granted to BARE TATTOO & HAIR REMOVAL, upon the terms and subject to the conditions of this ordinance to maintain and use one (1) sign(s) projecting over the public right-of-way attached to its premises known as 2719 N. Halsted St..

Said sign structure(s) measures as follows; along N. HALSTED STREET:

One (1) at three point five (3.5) feet in length, three point five (3.5) feet in height and nine (9) feet above grade level.

The location of said privilege shall be as shown on prints kept on file with the Department of Business Affairs and Consumer Protection and the Office of the City Clerk.

Said privilege shall be constructed in accordance with plans and specifications approved by the Department of Transportation (Division of Project Development) and Zoning Department - Signs.

This grant of privilege in the public way shall be subject to the provisions of Section 10-28-015 and all other required provisions of the Municipal Code of Chicago.

The grantee shall pay to the City of Chicago as compensation for the privilege #1137139 herein granted the sum of one hundred (\$100.00) per annum in advance.

A 25% penalty will be added for payments received after due date.

The permit holder agrees to hold the City of Chicago harmless for any damage, relocation or replacement costs associated with damage, relocation or removal of private property caused by the City performing work in the public way.

Authority herein given and granted for a period of five (5) years from and after Date of Passage.

Alderman

A handwritten signature in black ink, appearing to read 'Michele Smith', written over a horizontal line.

Michele Smith 43<sup>rd</sup> Ward

By signing the Customer Acceptance on this print, I understand that I am accepting all aspects of this drawing. This includes, but is not limited to, dimensions, spelling, and all other representations herein. I also understand that color reproductions on this print are approximate and may not match manufacturer's samples exactly.

X

Customer Acceptance SIGNATURE DATE

LSG SALES INITIALS

IF REQUIRED, Landlord Acceptance SIGNATURE DATE

DATE

DATE

**Landmark Sign group**

7424 Industrial Avenue  
Chesterton, IN 46304  
Phone 219 763 9577  
Fax 219 763 4259  
www.landmarksign.com

PRINTED  
SE-24872.1  
SHAUN ENSIGN  
LSG SALES REPRESENTATIVE

10.17.18  
DATE

BARE TATTOO &  
HAIR REMOVAL  
CLIENT NAME

2719 N HALSTED  
CHICAGO, IL  
JOB LOCATION

JL 1 = 1'-0"

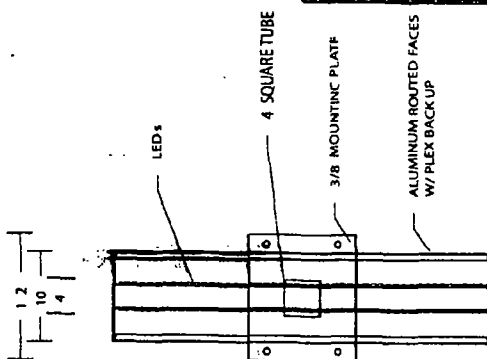
DRAWN BY SCALE

- REVISIONS:
- 1 CHANGE SIZE
  - 10.24.18 JL
  - 2 CHANGE COPY
  - LAYOUT
  - 11.06.18 JL
  - 3 CHANGE COLOR
  - 11.07.18 JL
  - 4 MOVE SIGN UP TO
  - BRICK FASCIA
  - 11.13.18 JL
  - 5 CENTER MOUNTING
  - BRACKET AND CHANGE
  - RENDER TO 9'-0" TO GRADE
  - 11.16.18 JL

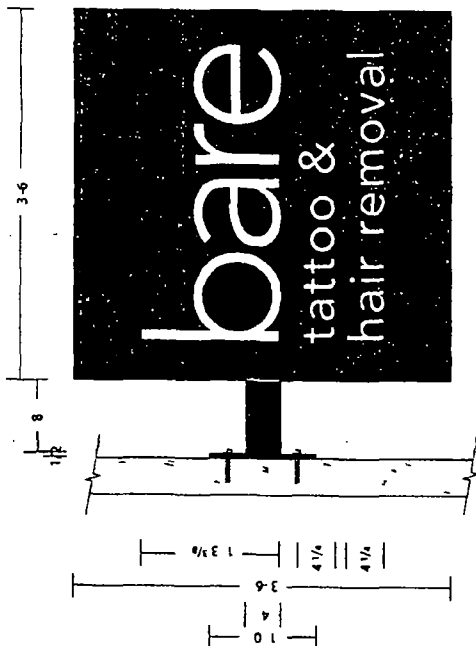
Designed  
110 VAC

Elect. code Convention will be  
Visible with 5 ft. at time of  
Installation  
Second trip will be charged  
1 Time & Material

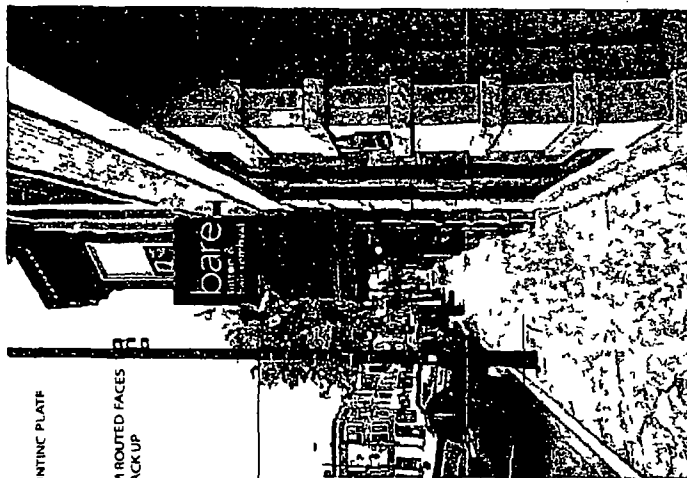
THIS DRAWING IS THE PROPERTY OF  
LANDMARK SIGN GROUP INC.  
IT IS TO BE USED FOR THE PROJECT  
AND NOT BE REPRODUCED OR  
TRANSMITTED IN ANY FORM OR  
BY ANY MEANS, ELECTRONIC OR  
MECHANICAL, WITHOUT THE  
WRITTEN PERMISSION OF THE  
LANDMARK SIGN GROUP INC.



End View 1/2 = 1'-0"



Front View 1 = 1'-0"



Proposed NTS

ONE DOUBLE FACE BLADE SIGN/ INTERNALLY ILLUMINATED WITH LED's/ EXT PAINTED/  
ROUTED ACM BACKED WITH PLEX/ FLAG MOUNT TO STONE BUILDING FASCIA WITH  
TUBE AND PLATE/ EXT PAINTED

○ SIGNCASE = MATTHEWS PAINT TO MATCH PANTONE 647 C BLUE

COPY = WHITE PLEX

ILLUMINATION = WHITE LED's

MOUNTING TUBE AND PLATE = MAP BLACK

Sign Type	Blade
Overall Size	3'-6" x 3'-6"
Square Footage	12.25 SF
Approx Weight	120 lbs
Volt/Ampere Load	4A @ 110V AC
Branch Circuit(s) Required	1
Lamp	LED
Watts	440
Power Supplies	2

2018 ELECTRICAL CODE

Material Aluminum