



# City of Chicago



Or2015-133

Office of the City Clerk

## Document Tracking Sheet

<b>Meeting Date:</b>	3/18/2015
<b>Sponsor(s):</b>	Burnett (27)
<b>Type:</b>	Order
<b>Title:</b>	Issuance of permits for sign(s)/signboard(s) at 922 W Washington Blvd
<b>Committee(s) Assignment:</b>	Committee on Zoning, Landmarks and Building Standards

ORDERED, That the Commissioner of the Building Department is hereby directed to issue a sign permit to:

**MIDWEST SIGN & LIGHTING, INC.  
4910 WILSHIRE BLVD.  
ORLAND PARK, IL 60462**

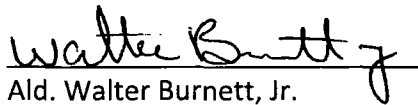
For the erection of a sign / signboard over twenty-four (24) feet in height and / or over one hundred (100) square feet (in area of one face) at:

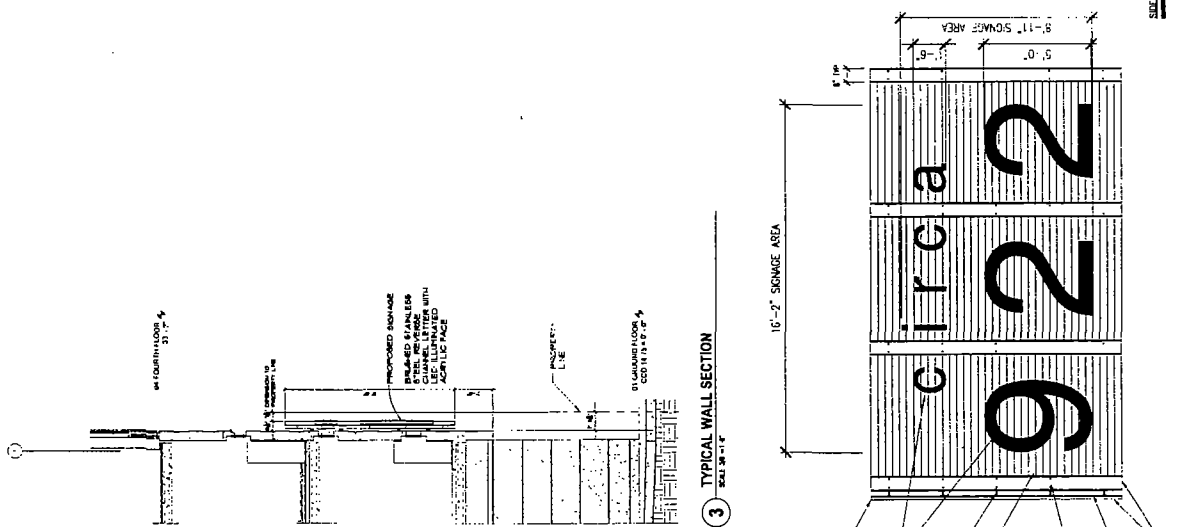
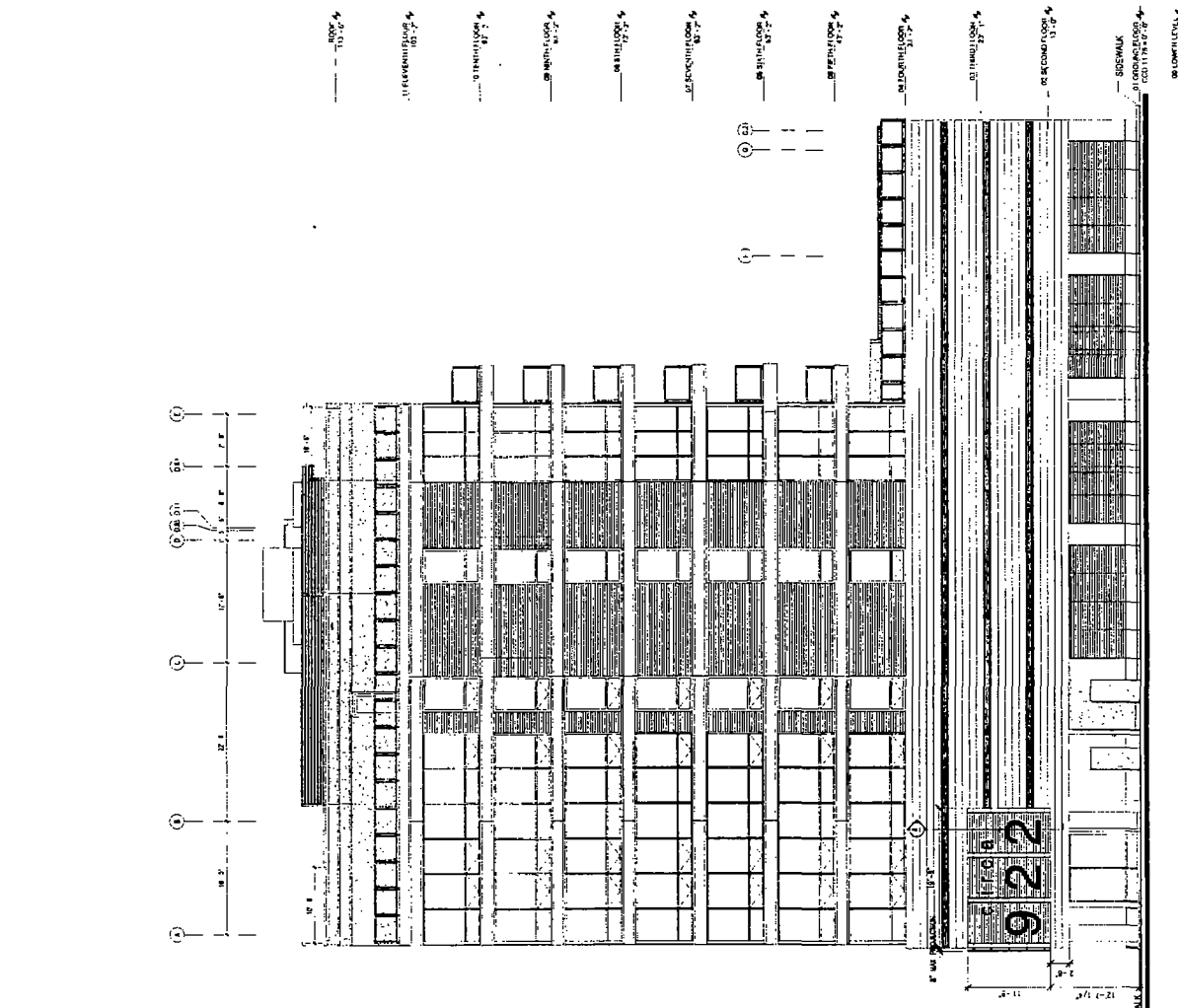
**922 W. WASHINGTON BLVD.  
CHICAGO, IL 60607**

With the following Dimensions, height, and square foot area:

Dimensions: **Length: 19'-9" Height: 11' - 8"**  
Height Above Grade / Roof to top of Sign: **12' - 7 1/4"**  
Total Square Foot Area: **230 Square Feet**

Such signs shall comply with all provisions of Title 17 of the Chicago Zoning Ordinance and all other applicable provisions of the Municipal Code of the City of Chicago governing the construction and maintenance of outdoor signs, sign boards, and structures.

  
Ald. Walter Burnett, Jr.  
Alderman, 27<sup>th</sup> Ward



1 EXTERIOR SIGNAGE ELEVATION - SOUTH  
SCALE 1/8" = 1'-0"

2 EXTERIOR SIGNAGE ELEVATION - SOUTH  
SCALE 1/8" = 1'-0"

3 TYPICAL WALL SECTION  
SCALE 3/8" = 1'-0"

NOT FOR CONSTRUCTION

Sheet Number: **ID6.00**

Date: **02/03/14**

Project Name: **555 WASHINGTON**

Project Location: **WASHINGTON**

Project Description: **ELEVATIONS DETAILS**

Drawn By: **AF**

Checked By: **AF**

Approved By: **AF**

DESIGN: **555 DESIGN PARTNERS ARCHITECTS INC.**  
 1201 F STREET, N.W.  
 SUITE 1000  
 WASHINGTON, DC 20004  
 TEL: 202.462.5555  
 WWW.555DESIGN.COM

© DIVISION OF 555 INFORMATION INC.

555 DESIGN PARTNERS ARCHITECTS INC.  
 1201 F STREET, N.W.  
 SUITE 1000  
 WASHINGTON, DC 20004  
 TEL: 202.462.5555  
 WWW.555DESIGN.COM

555 DESIGN PARTNERS ARCHITECTS INC.  
 1201 F STREET, N.W.  
 SUITE 1000  
 WASHINGTON, DC 20004  
 TEL: 202.462.5555  
 WWW.555DESIGN.COM

555 DESIGN PARTNERS ARCHITECTS INC.  
 1201 F STREET, N.W.  
 SUITE 1000  
 WASHINGTON, DC 20004  
 TEL: 202.462.5555  
 WWW.555DESIGN.COM

555 DESIGN PARTNERS ARCHITECTS INC.  
 1201 F STREET, N.W.  
 SUITE 1000  
 WASHINGTON, DC 20004  
 TEL: 202.462.5555  
 WWW.555DESIGN.COM

555 DESIGN PARTNERS ARCHITECTS INC.  
 1201 F STREET, N.W.  
 SUITE 1000  
 WASHINGTON, DC 20004  
 TEL: 202.462.5555  
 WWW.555DESIGN.COM

555 DESIGN PARTNERS ARCHITECTS INC.  
 1201 F STREET, N.W.  
 SUITE 1000  
 WASHINGTON, DC 20004  
 TEL: 202.462.5555  
 WWW.555DESIGN.COM

555 DESIGN PARTNERS ARCHITECTS INC.  
 1201 F STREET, N.W.  
 SUITE 1000  
 WASHINGTON, DC 20004  
 TEL: 202.462.5555  
 WWW.555DESIGN.COM

555 DESIGN PARTNERS ARCHITECTS INC.  
 1201 F STREET, N.W.  
 SUITE 1000  
 WASHINGTON, DC 20004  
 TEL: 202.462.5555  
 WWW.555DESIGN.COM

