



# City of Chicago



Or2019-33

Office of the City Clerk

## Document Tracking Sheet

<b>Meeting Date:</b>	1/23/2019
<b>Sponsor(s):</b>	Reboyas (30)
<b>Type:</b>	Order
<b>Title:</b>	Issuance of permits for sign(s)/signboard(s) at 2973 N Milwaukee Ave
<b>Committee(s) Assignment:</b>	Committee on Zoning, Landmarks and Building Standards

CITY COUNCIL  
COMMITTEE ON ZONING, LANDMARKS AND BUILDING STANDARDS

COUNCIL ORDER

RE: Approval of sign over 100 square feet in area or over 24 feet above grade

ORDERED, that the City Council hereby approves the following sign application submitted by:

Applicant\*: Fifth Third Bank

(\* The Applicant is the owner of the real property or the business tenant of the real property. Do not list the sign contractor, sign erector, sign company or advertising entity in the above space.)

This Order approves the following sign in accordance with Municipal Code of Chicago Section 13-20-680:

Address of Sign: 2973 N. Milwaukee Chicago, IL 60618

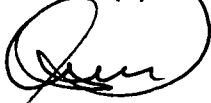
Zoning District: B3-2

DOB Sign Permit Application #: #100799504

Sign Details:

1. On-premise  OR Off-premise
2. Static sign  OR Dynamic-image display sign
3. Number of sign faces 2
4. Projecting over the public way N (Yes or No) If yes, Public Way Use #: \_\_\_\_\_
5. Dimensions: Length 7 feet 7 inches Height 23 feet 9 inches  
Total square feet in area: 180 feet 0 inches
6. Height above grade: 23 feet 9 inches
7. Elevation (side of building or lot where the sign will be erected): Southeast
8. Name of Sign Contractor/Erector: South Water Signs

To be legal, such sign shall comply with all provisions of Title 17 of the Chicago Municipal Code ("Zoning Ordinance") and all other provisions of the Municipal Code governing the permitting, construction and maintenance and removal of signs and sign structures. Failure of the applicant and the applicant's successors to comply shall be grounds for invalidation or revocation of the sign permit.

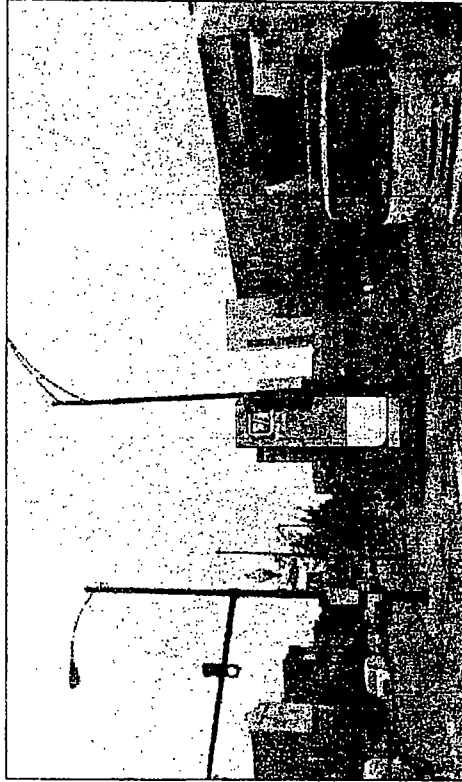
  
\_\_\_\_\_  
Alderman

30  
\_\_\_\_\_  
Ward

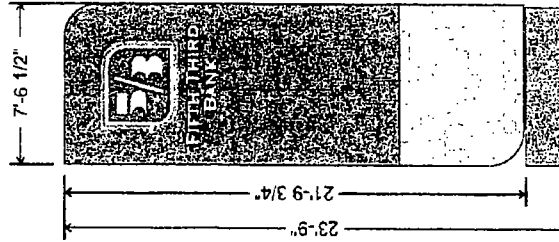
**Sign-04 - Illuminated Monument - New Pylon**



Existing Sign



Proposed Sign



**Illuminated Pylon Sign - P-23**  
3/16" = 1'

- Fabricated double-sided aluminum pylon sign with curved face and single-pole concrete foundation
- Internally illuminated with white LED lighting
- Routed and pushed thru graphics decorated with respective color graphics
- Top & returns illuminated with green LED lighting
- Single-pole mounting in concrete spread foundation

- Electrical Requirements**
- (9) 60W 12V LED power supply
  - 120-277V Variable Input
  - (1) 20amp dedicated 3-wire circuit

<p>FIFTH THIRD BANK MEMBER N.A.A.B. 2008 N.A.A.B. 2009 N.A.A.B. 2010 N.A.A.B. 2011 N.A.A.B. 2012 N.A.A.B. 2013 N.A.A.B. 2014 N.A.A.B. 2015 N.A.A.B. 2016 N.A.A.B. 2017 N.A.A.B. 2018 N.A.A.B. 2019 N.A.A.B. 2020 N.A.A.B. 2021 N.A.A.B. 2022 N.A.A.B. 2023 N.A.A.B. 2024</p>	<p>ALL ITEMS FABRICATED ARE THE SOLE PROPERTY OF SOUTH WATER SIGNS AND MAY NOT BE REPRODUCED IN PART OR WHOLE WITHOUT WRITTEN PERMISSION FROM SOUTH WATER SIGNS</p>	<p>South Water Signs 10000 South Water Signs Blvd Suite 100 Charlotte, NC 28215 704.541.1111 www.southwatersigns.com</p>
--	---	--