



# City of Chicago



Or2015-400

Office of the City Clerk

## Document Tracking Sheet

<b>Meeting Date:</b>	7/29/2015
<b>Sponsor(s):</b>	Burke (14)
<b>Type:</b>	Order
<b>Title:</b>	Issuance of permits for sign(s)/signboard(s) at 1525 W Homer St
<b>Committee(s) Assignment:</b>	Committee on Zoning, Landmarks and Building Standards

Committee on Zoning, Landmarks  
and Building Standards  
City Council Meeting  
Alderman Edward M. Burke, Ward 14  
Sign Order

ORDERED, That the Commissioner of Buildings is hereby directed to issue a sign permit to:

MIDWEST SIGNS  
4910 WILSHIRE BLVD.  
COUNTRY CLUB HILLS, IL 60478

For the erection of a sign/signboard over 24 feet in height and/or over 100 square feet (in area of one face) at:

5501 S. KEDZIE, LLC (Sedgwick Properties)  
1525 W. HOMER STREET, Ste. 401  
CHICAGO, IL 60642-1296

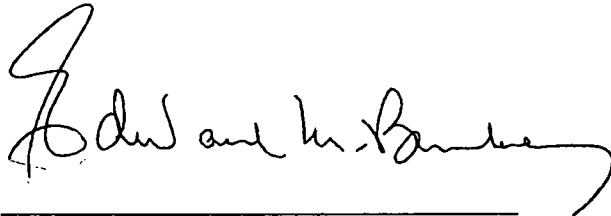
Dimensions: length 13' - 10" height 15'

Height above grade/roof to top of sign 24 Feet

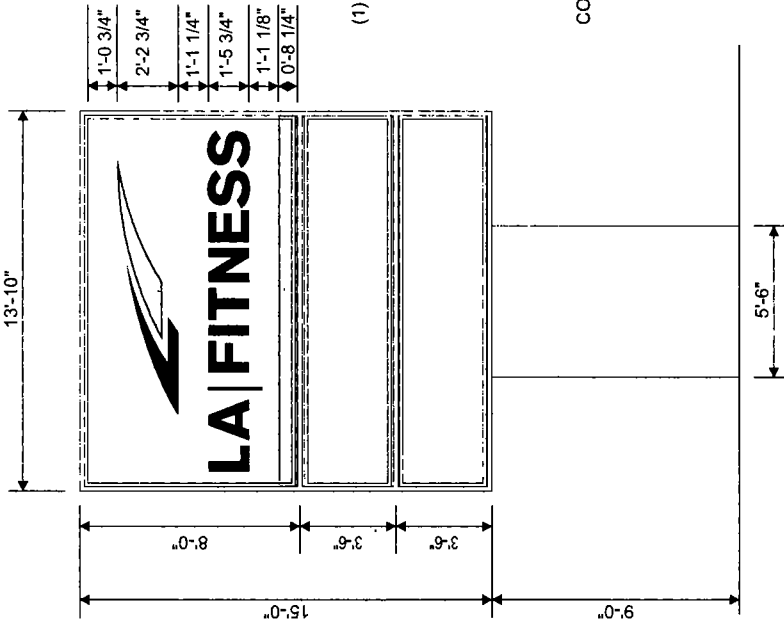
Total Square Foot Area 208 Square Feet

Elevation Northwest Corner of Property

Such sign shall comply with all applicable provisions of TITLE 17 of the Chicago Zoning Ordinance and all other applicable provisions of the Municipal Code of the City of Chicago governing the construction and maintenance of outdoor signs, signboards and structures.

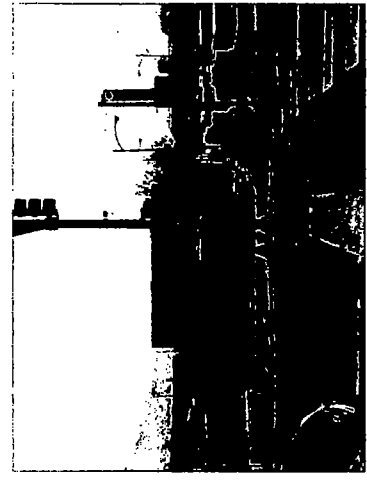


Alderman Edward M. Burke  
Ward 14



(1) COMPLETE DIF INTERNALLY ILLUMINATED CABINET SIGN WITH STANDARD POLYCARBONATE PAN FACES. THE SIGN IS TO HAVE (3) PAN FACES PER SIDE. FIRST SURFACE VINYL DECORATION. THE LOWER 2 FACES ARE TO BE STD WHITE OPAQUE PAN FACES, FOR FUTURE TENANTS. THE RETAINER IS FIGURED FOR 2". THE FACES ARE TO BE SEPARATED USING DIVIDER BARS. THE CABINET DEPTH IS TO BE 2'-0". THE SIGN IS TO BE CENTER POLE MOUNTED. THE SIGN IS TO HAVE AN ALUMINUM POLE COVER. THE SIGN IS TO BE UL LISTED WITH A SERVICE SWITCH INSTALLED.

**COLORS:**  
 CABINET WHITE  
 POLE COVER: WHITE  
 LA FITNESS  
 BACKGROUND: WHITE  
 COPY: 7725-197 LIGHT NAVY  
 LOGO: 7725-197 LIGHT NAVY, 3630-75 MARIGOLD



**EXISTING**



**PROPOSED**

**LA FITNESS**  
 5501 S KEDZIE AVE  
 CHICAGO, IL  
 ORDER#:

ACCEPTED BY: \_\_\_\_\_ DATE: \_\_\_\_\_

ALL INFORMATION CONTAINED ON THIS DRAWING IS CONFIDENTIAL AND PROPRIETARY. IT IS THE SOLE PROPERTY OF ADAMS SIGNS AND IS NOT TO BE REPRODUCED BY ANYONE WITHOUT WRITTEN CONSENT FROM ADAMS SIGNS. THIS SIGN SHALL REMAIN THE PROPERTY OF ADAMS SIGNS UNTIL FULLY PAID FOR. THE INTENT OF THIS DRAWING IS TO SHOW A CONCEPTUAL REPRESENTATION OF THE PROPOSED SIGNAGE. DUE TO VARIATIONS IN PRINTING DEVICES AND SUBSTRATES, THE FINISHED PRODUCT MAY DIFFER SLIGHTLY FROM DRAWING.

SCALE: 3/16" = 1'-0"  
 SALES: DARRYL  
 ART: RS  
 DATE: 2-11-15 / 4-15-15 / 4-27-15 / 5-1-15 / 6-5-15  
 DWG. #: 0215022  
 CKD.



AS BUILT: CABINET TRIM SIZE: \_\_\_\_\_  
 FACE TRIM SIZE: \_\_\_\_\_

**TYPICAL DOUBLE FACED POLE SIGN**

U.L. 48 AND N.E.C. 600 COMPLIANT  
(NOT TO SCALE)

1. 2" X 2" X 1/4" ANGLE FRAME, WELDED CORNER SEAMS, .080 ALUM SKIN
2. 8 5/8" DIAMETER X .500 WALL, INTERNAL POLE SLEEVED INTO 1'-0" POLE
3. LIFTING POINT, (REMOVED AFTER INSTALLATION AND REPLACED WITH HEX BOLT)
4. STEEL PLATE BOLTED TO CABINET AND WELDED TO SIGN POLE.
5. 12 3/4" DIAMETER X .500 WALL, PIPE DESIGNED TO WITHSTAND 90 MPH WINDS.
6. RECESSED HIGH OUTPUT, DEAD FRONT LAMP SOCKETS
7. DAYLIGHT HIGH OUTPUT LAMPS
8. WHITE TRANSLUCENT POLYCARBONATE SIGN FACE.
9. LISTED SIGN BALLAST (SEE ALSO DETAIL A)
10. 20 AMP SERVICE DISCONNECT SWITCH
11. #12 THHN CONTINUE FROM SIGN, IN CONDUIT AT A DEPTH NO LESS THAN 24" TO A DEDICATED 20 AMP CIRCUIT BREAKER, EXTENDED TO LANDLORD, COMMON ELECTRICAL SERVICE BY LANDLORD.
12. MANUFACTURERS LABEL AND U.L. LISTING
13. JUNCTION BOX
14. FUTURE TENANT FACES WHITE OPAQUE POLYCARBONATE SIGN FACE, UNTIL OCCUPIED

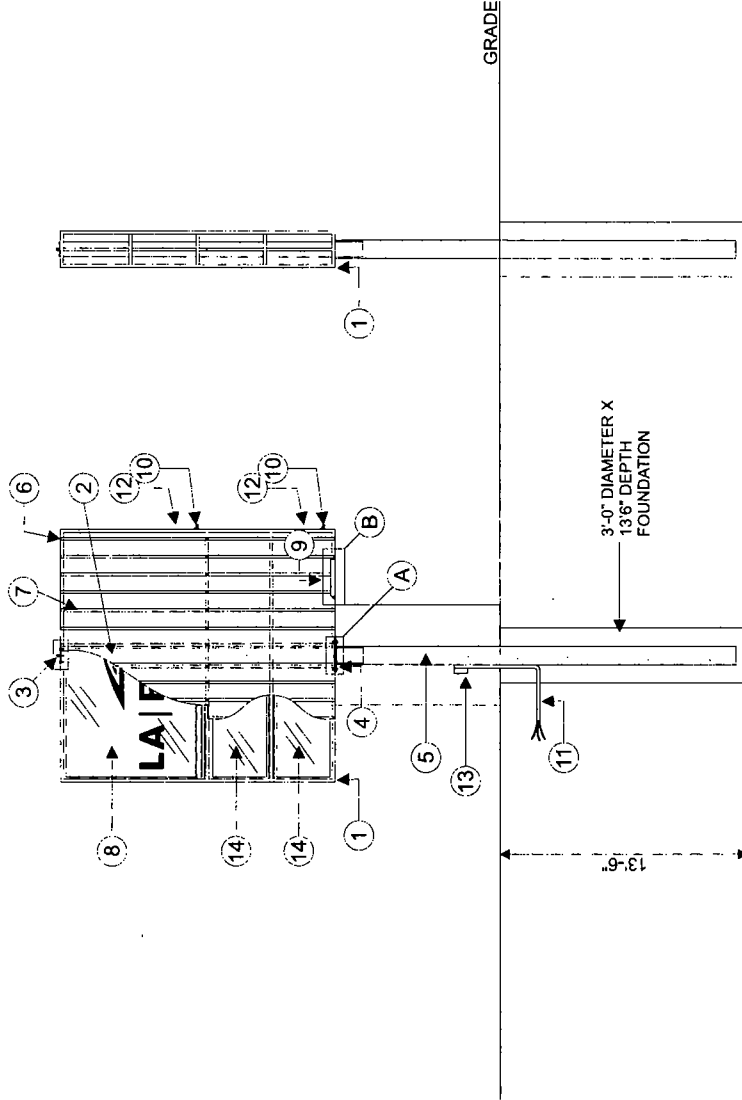
(2) 20 AMP CIRCUITS  
120 V / 18.7 A OR 240 V / 9.35A

LAMPS:  
(14) F96 T12 DHO  
(14) F84 T12 DHO

BALLASTS  
(4) EESB 848-46 BALLASTS  
(2) EESB 432-14 BALLASTS

UL# B73374817  
UL# B73374818

APPROXIMATE WEIGHT: 1,800 LBS



GRADE

3'-0" DIAMETER X  
13'6" DEPTH  
FOUNDATION

LA FITNESS  
5501 S KEDZIE AVE  
CHICAGO, IL  
ORDER#:

ACCEPTED BY: \_\_\_\_\_ DATE: \_\_\_\_\_

ALL INFORMATION CONTAINED ON THIS DRAWING IS CONFIDENTIAL AND PROPRIETARY. IT IS THE SOLE PROPERTY OF ADAMS SIGNS AND IS NOT TO BE REPRODUCED BY ANYONE WITHOUT WRITTEN CONSENT FROM ADAMS SIGNS. THIS SIGN SHALL REMAIN THE PROPERTY OF ADAMS SIGNS UNTIL FULLY PAID FOR.

THE INTENT OF THIS DRAWING IS TO SHOW A CONCEPTUAL REPRESENTATION OF THE PROPOSED SIGNAGE. DUE TO VARIATIONS IN PRINTING DEVICES AND SUBSTRATES, THE FINISHED PRODUCT MAY DIFFER SLIGHTLY FROM DRAWING.

SCALE: 1/8" = 1'-0"

DATE: 2-11-15 / 4-15-15 / 4-27-15 / 5-1-15 / 6-5-15

SALES: DARRYL

ART: RS

DWG. #: 0215022

CKD.:

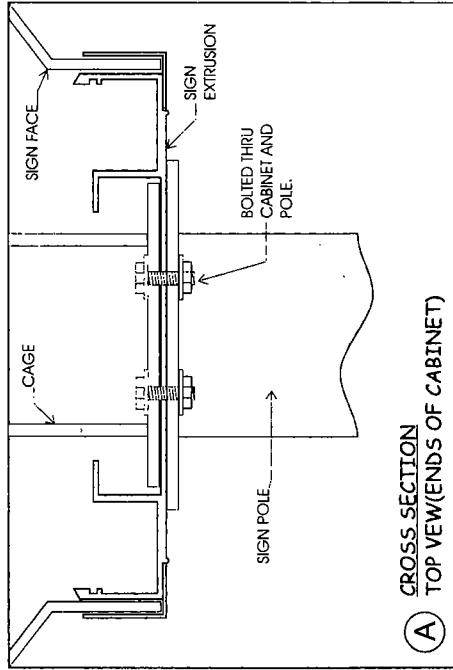


**ADAMS ELECTRIC SIGNS**  
**CHICAGO, IL**

AS BUILT: CABINET TRIM SIZE:

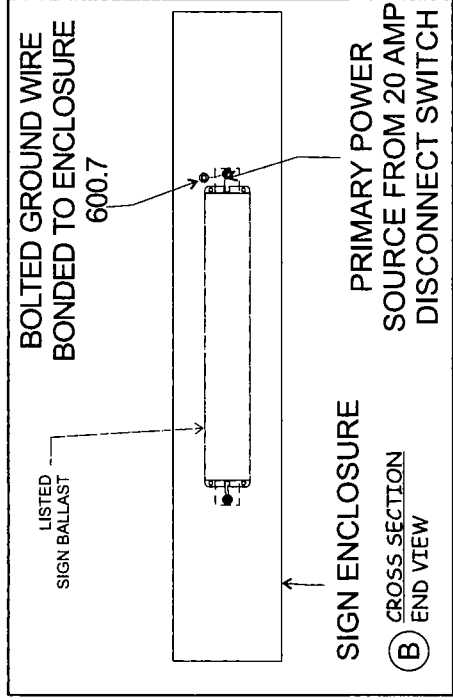
FACE TRIM SIZE:

TYPICAL EXTRUSION WITH CENTER POLE AND STEEL CAGE SUPPORT.



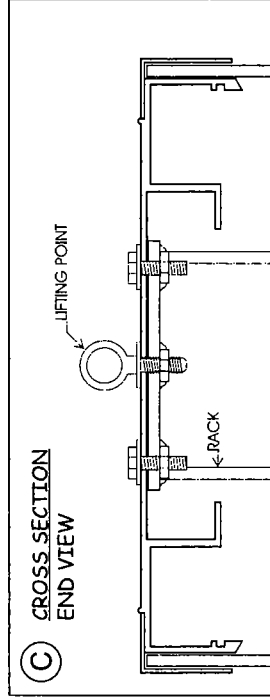
(A) CROSS SECTION TOP VIEW (ENDS OF CABINET)

TYPICAL BALLAST INSTALLATION WITH MECHANICALLY BONDED GROUNDING.



(B) CROSS SECTION END VIEW

TYPICAL EXTRUSION



(C) CROSS SECTION END VIEW

LA FITNESS  
5501 S KEDZIE AVE  
CHICAGO, IL  
ORDER#:

ACCEPTED BY: \_\_\_\_\_ DATE: \_\_\_\_\_

THE INTENT OF THIS DRAWING IS TO SHOW A CONCEPTUAL REPRESENTATION OF THE PROPOSED SIGNAGE. DUE TO VARIATIONS IN PRINTING DEVICES AND SUBSTRATES, THE FINISHED PRODUCT MAY DIFFER SLIGHTLY FROM DRAWING.

SCALE: NTS

DATE: 2-11-15 / 4-15-15 / 4-27-15 / 5-1-15 / 6-5-15

SALES: DARRYL

ART: RS

DWG. #: 0215022

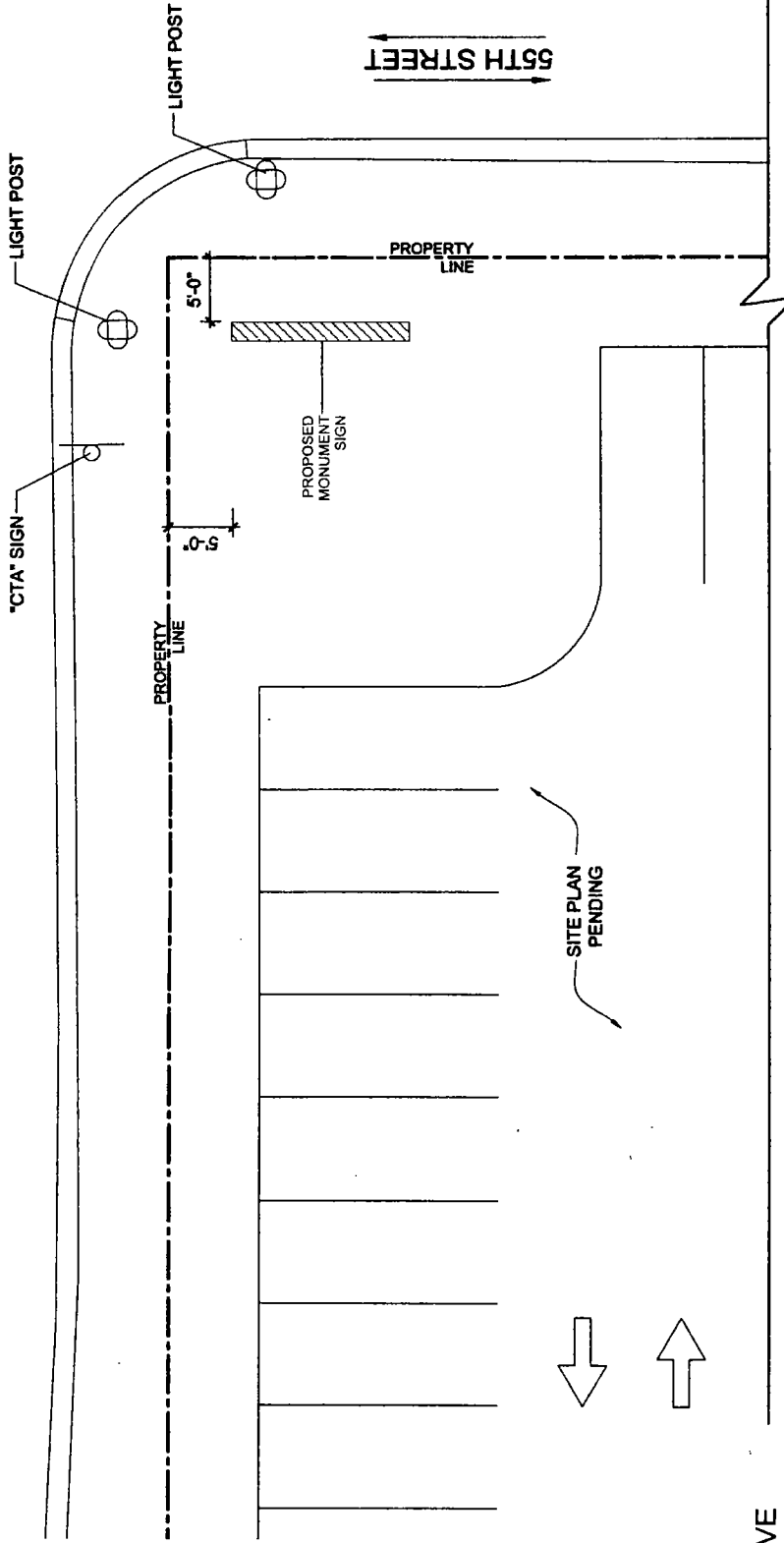
CKD.:



AS BUILT: CABINET TRIM SIZE:

FACE TRIM SIZE:

**KEDZIE AVE.**



LA FITNESS  
 5501 S KEDZIE AVE  
 CHICAGO, IL  
 ORDER#:

ACCEPTED BY: \_\_\_\_\_ DATE: \_\_\_\_\_

ALL INFORMATION CONTAINED ON THIS DRAWING IS CONFIDENTIAL AND PROPRIETARY. IT IS THE SOLE PROPERTY OF ADAMS SIGNS AND IS NOT TO BE REPRODUCED BY ANYONE WITHOUT WRITTEN CONSENT FROM ADAMS SIGNS. THIS SIGN SHALL REMAIN THE PROPERTY OF ADAMS SIGNS UNTIL FULLY PAID FOR. THE INTENT OF THIS DRAWING IS TO SHOW A CONCEPTUAL REPRESENTATION OF THE PROPOSED SIGNAGE. DUE TO VARIATIONS IN PRINTING DEVICES AND SUBSTRATES, THE FINISHED PRODUCT MAY DIFFER SLIGHTLY FROM DRAWING.

SCALE: 3/32" = 1'-0"  
 SALES: DARRYL  
 ART: RS  
 DWG. #: 0215022  
 DATE: 2-11-15 / 4-15-15 / 4-27-15 / 5-1-15 / 6-5-15  
 CKD.:



AS BUILT: \_\_\_\_\_ CABINET TRIM SIZE: \_\_\_\_\_  
 FACE TRIM SIZE: \_\_\_\_\_