



# City of Chicago



Or2016-398

Office of the City Clerk

## Document Tracking Sheet

<b>Meeting Date:</b>	7/20/2016
<b>Sponsor(s):</b>	Burnett (27)
<b>Type:</b>	Order
<b>Title:</b>	Issuance of permits for sign(s)/signboard(s) at 347 W Chestnut St
<b>Committee(s) Assignment:</b>	Committee on Zoning, Landmarks and Building Standards

COMMITTEE ON ZONING, LANDMARKS & BUILDING STANDARDS

(signs)

ORDERED, That the Commissioner of Buildings is hereby directed to issue a sign permit to:

Poblocki Sign Company  
922 S. 70th St.  
West Allis, WI 53214  
414-453-4010

For the erection of a sign/signboard over 24 feet in height and/or 100 square feet (in area of one face) at:

Sign Location 347 W. Chestnut St. NEXT

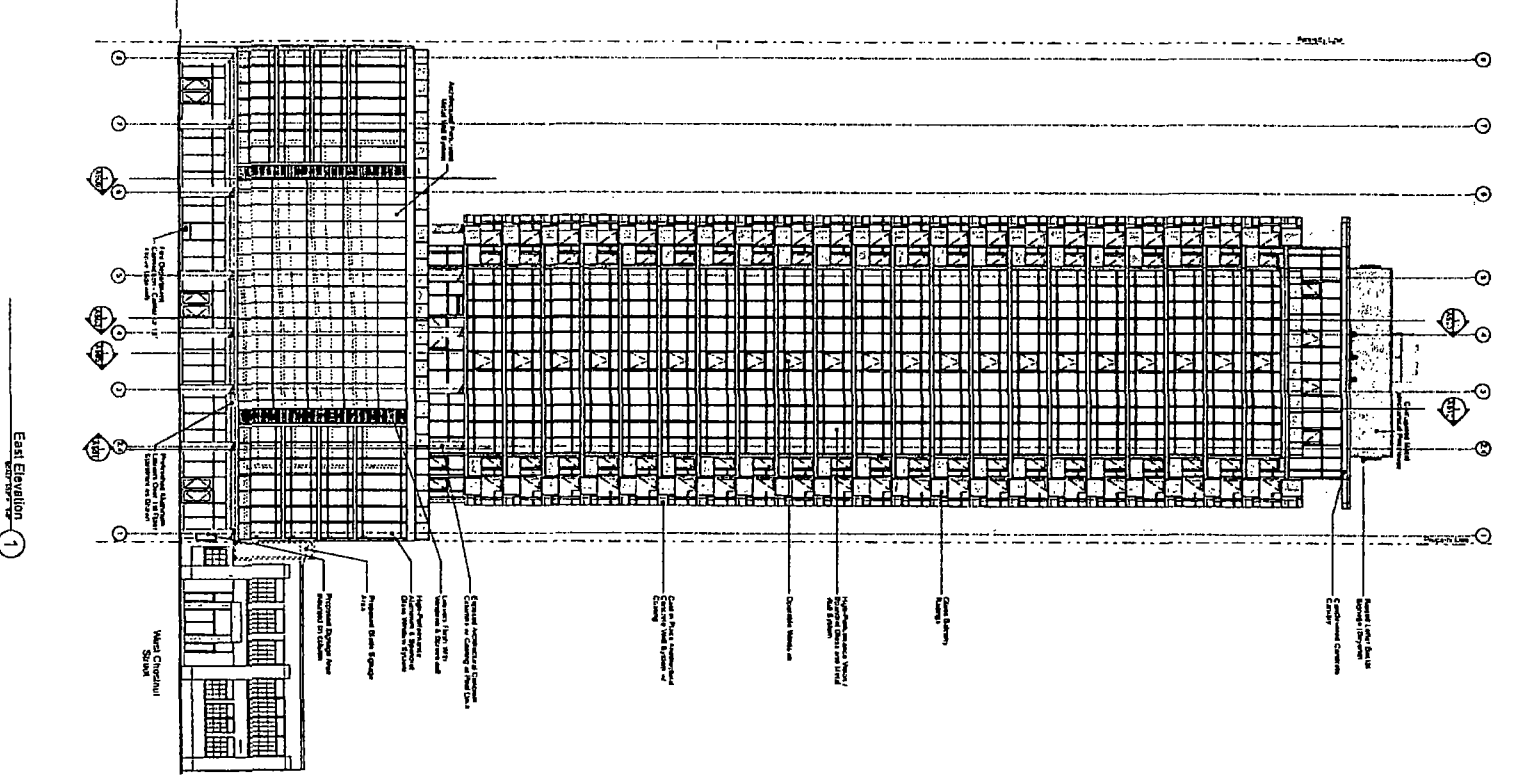
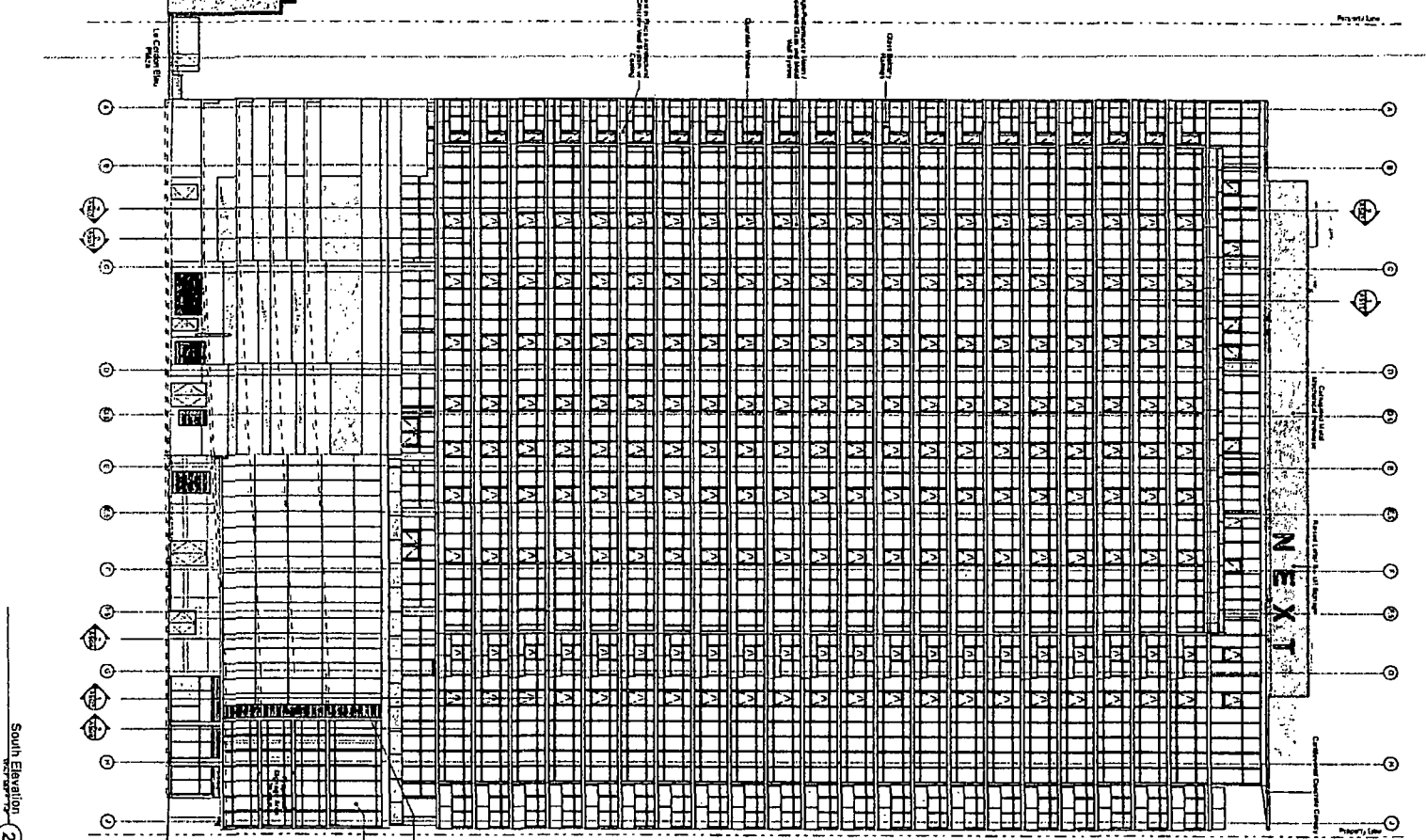
**Dimensions:** 6'6" x 39' 4 5/16" - two sets of letters (North & South) **Height:** 298' to top of letters

**Height above grade/roof to top of sign:** Both = 298'

**TOTAL SQUARE FOOT AREA:** 255.83 each

Such sign(s) shall comply with all applicable provisions of TITLE 17 of the Chicago Zoning Ordinance and all other applicable provisions of the Municipal Code of the CITY OF CHICAGO governing the construction and maintenance of outdoor sign, signboards and structures.

A handwritten signature in black ink, appearing to read "Walter...", with a stylized flourish at the end.



**GENERAL NOTES**

1. Structural Steel: AISC Steel Erection Manual, 13th Edition.
2. Structural Steel: AISC Steel Erection Manual, 13th Edition.
3. Structural Steel: AISC Steel Erection Manual, 13th Edition.
4. Structural Steel: AISC Steel Erection Manual, 13th Edition.
5. Structural Steel: AISC Steel Erection Manual, 13th Edition.
6. Structural Steel: AISC Steel Erection Manual, 13th Edition.
7. Structural Steel: AISC Steel Erection Manual, 13th Edition.
8. Structural Steel: AISC Steel Erection Manual, 13th Edition.
9. Structural Steel: AISC Steel Erection Manual, 13th Edition.
10. Structural Steel: AISC Steel Erection Manual, 13th Edition.

**REVISIONS**

NO.	DATE	DESCRIPTION
1	11/11/11	Issue for Construction
2	11/11/11	Issue for Construction
3	11/11/11	Issue for Construction
4	11/11/11	Issue for Construction
5	11/11/11	Issue for Construction
6	11/11/11	Issue for Construction
7	11/11/11	Issue for Construction
8	11/11/11	Issue for Construction
9	11/11/11	Issue for Construction
10	11/11/11	Issue for Construction

**PROJECT INFORMATION**

Project Name: NEXT  
 Project No.: 11111  
 Date: 11/11/11  
 Designer: [Name]  
 Checker: [Name]  
 Title: [Title]

**LEGEND**

Symbol	Description
[Symbol]	Structural Steel
[Symbol]	Concrete
[Symbol]	Glazing
[Symbol]	Other

**APPENDIX**

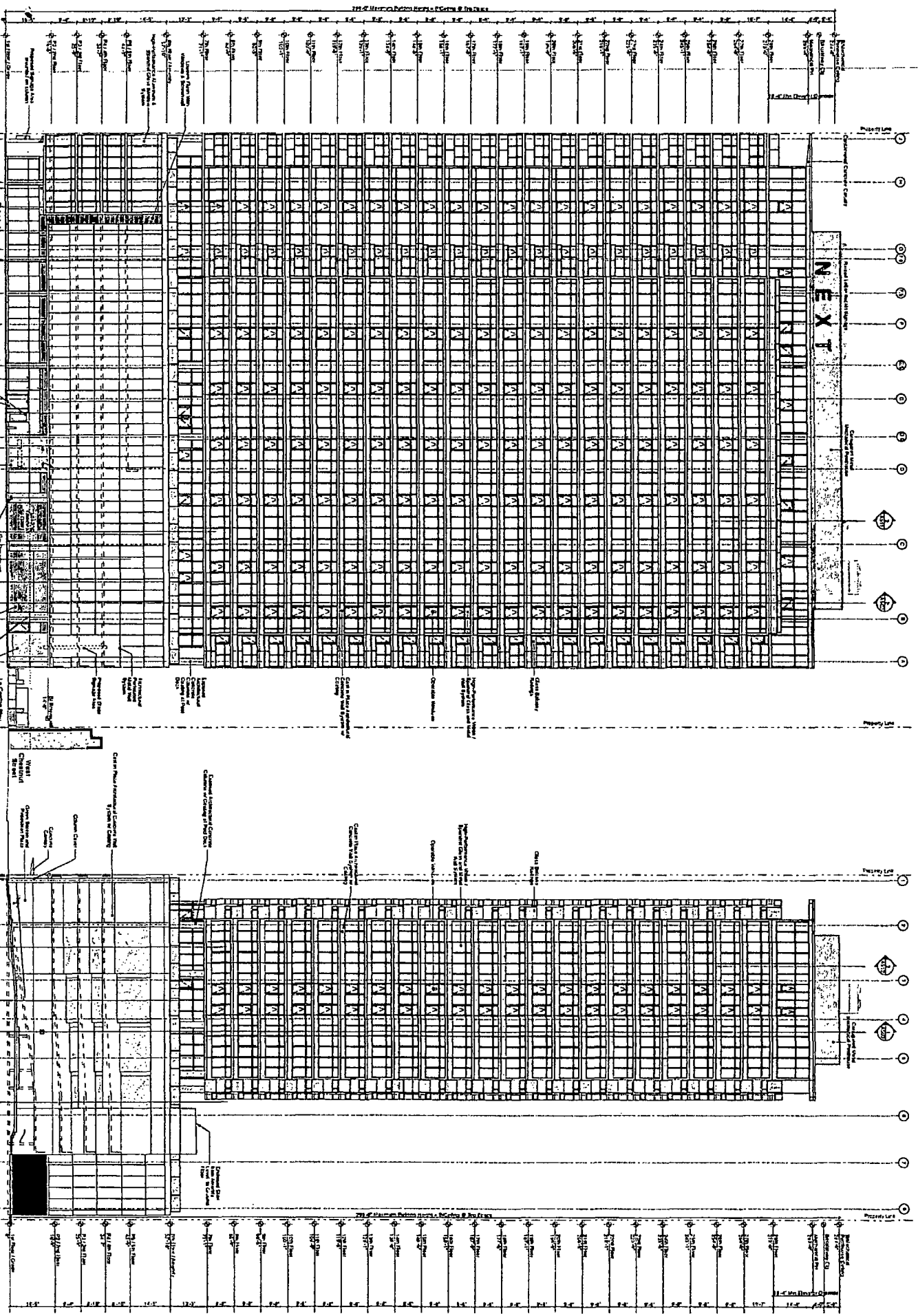
Appendix A: Structural Steel Details  
 Appendix B: Concrete Details  
 Appendix C: Glazing Details  
 Appendix D: Other Details

**NOTES**

1. All dimensions are in feet and inches.  
 2. All materials shall be as specified in the contract documents.  
 3. All work shall be in accordance with the contract documents.  
 4. All work shall be completed by the specified date.  
 5. All work shall be subject to inspection and approval by the architect.

**GENERAL NOTES**

1. Structural Steel: AISC Steel Erection Manual, 13th Edition.  
 2. Structural Steel: AISC Steel Erection Manual, 13th Edition.  
 3. Structural Steel: AISC Steel Erection Manual, 13th Edition.  
 4. Structural Steel: AISC Steel Erection Manual, 13th Edition.  
 5. Structural Steel: AISC Steel Erection Manual, 13th Edition.  
 6. Structural Steel: AISC Steel Erection Manual, 13th Edition.  
 7. Structural Steel: AISC Steel Erection Manual, 13th Edition.  
 8. Structural Steel: AISC Steel Erection Manual, 13th Edition.  
 9. Structural Steel: AISC Steel Erection Manual, 13th Edition.  
 10. Structural Steel: AISC Steel Erection Manual, 13th Edition.



North Elevation 2

West Elevation 1

NO.	DESCRIPTION	DATE
1	Issue for Construction	10/15/11
2	Issue for Construction	10/15/11
3	Issue for Construction	10/15/11
4	Issue for Construction	10/15/11
5	Issue for Construction	10/15/11
6	Issue for Construction	10/15/11
7	Issue for Construction	10/15/11
8	Issue for Construction	10/15/11
9	Issue for Construction	10/15/11
10	Issue for Construction	10/15/11

**NEXT**



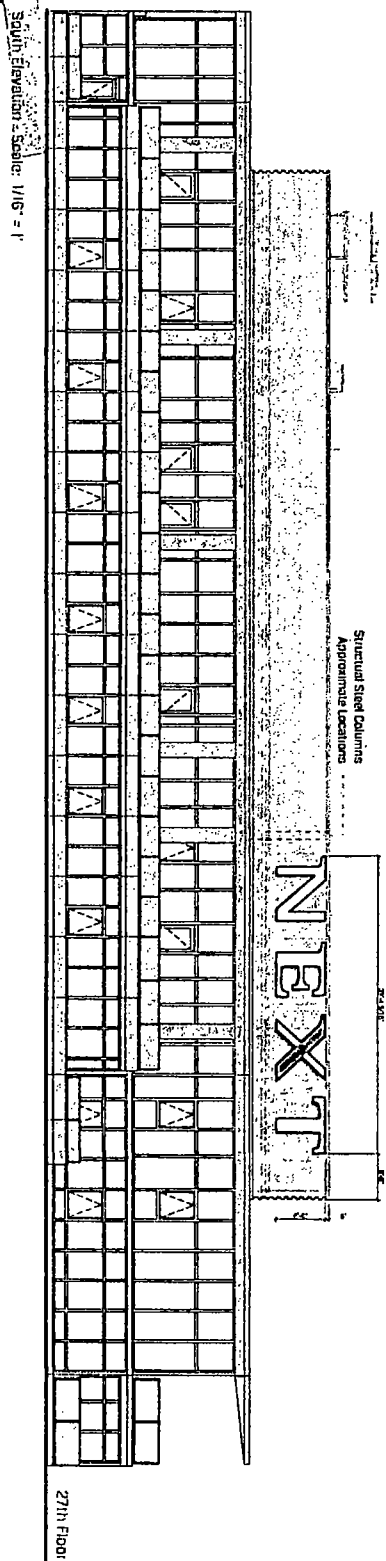
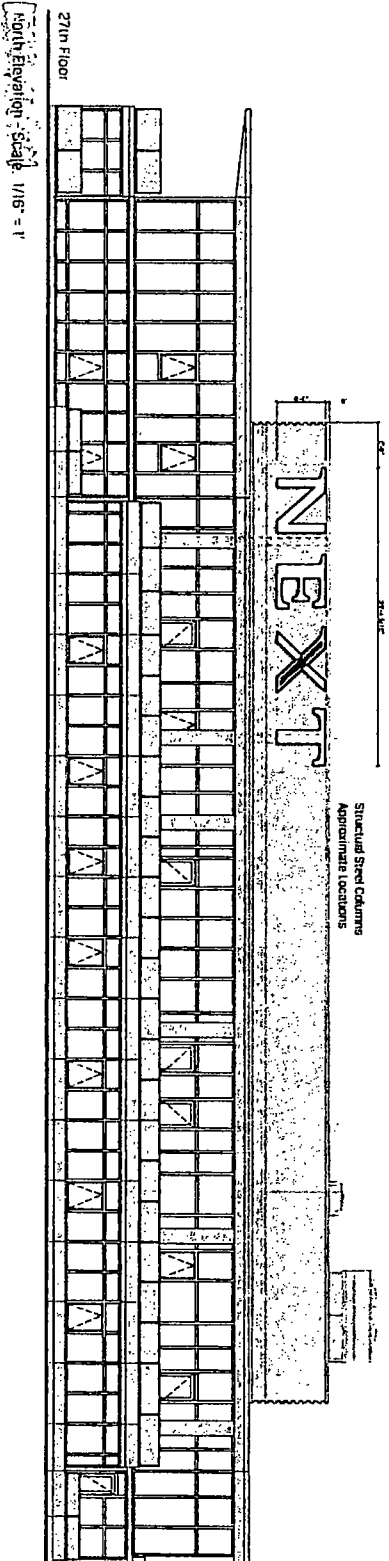
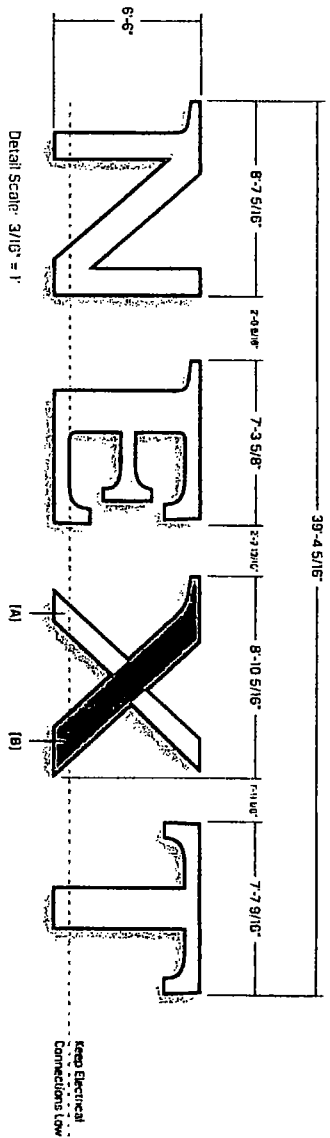
1. Computer Aided Design  
 2. Building Information Modeling  
 3. Project Collaboration  
 4. Quality Management  
 5. Risk Management  
 6. Sustainability  
 7. Safety Management  
 8. Security Management  
 9. Compliance Management  
 10. Performance Management



**SIGN SPECIFICATIONS**

- (A) - ILLUMINATED LETTERS
- Lighting: LED
- Voltage: 120v - 277v
- Description: Face-Up
- Letter Depth: 8"
- Face Material: 177 White Polycarbonate
- Return Color: Paint to match PMS Cool Grey 9C (satin)
- Face Retainer Color: Paint to match PMS Cool Grey 9C (satin)
- Installation: Flush to corrugated roof-top curtain wall
- (B) - GRAPHICS
- Material: Vinyl
- Color: 383D-06 Brilliant Green

255.83  
EACH



1007 S. 17th St., 6th Floor, Chicago, IL 60616  
Phone: 312.467.4600 Fax: 312.467.4601

The information contained in this document is the property of PBBLOCK. It is to be used only for the project and location specified. The manufacturer assumes no liability for any errors or omissions. The manufacturer reserves the right to change specifications without notice. The manufacturer is not responsible for any damage or injury caused by the use of this product. The manufacturer is not responsible for any damage or injury caused by the use of this product.

**BUILDING**  
347 West Chestnut  
NEXT Signage

Chicago, IL

Scale:  
Unprinted: 3/8" = 1'-0"  
Title: 1/8" = 1'-0"

REVISIONS  
REV 05/20/2011 01 2511

By: Dan Schumann  
Project: James Lechstein Engineering DESIGN  
SIGNED: JLB

**LL-01**

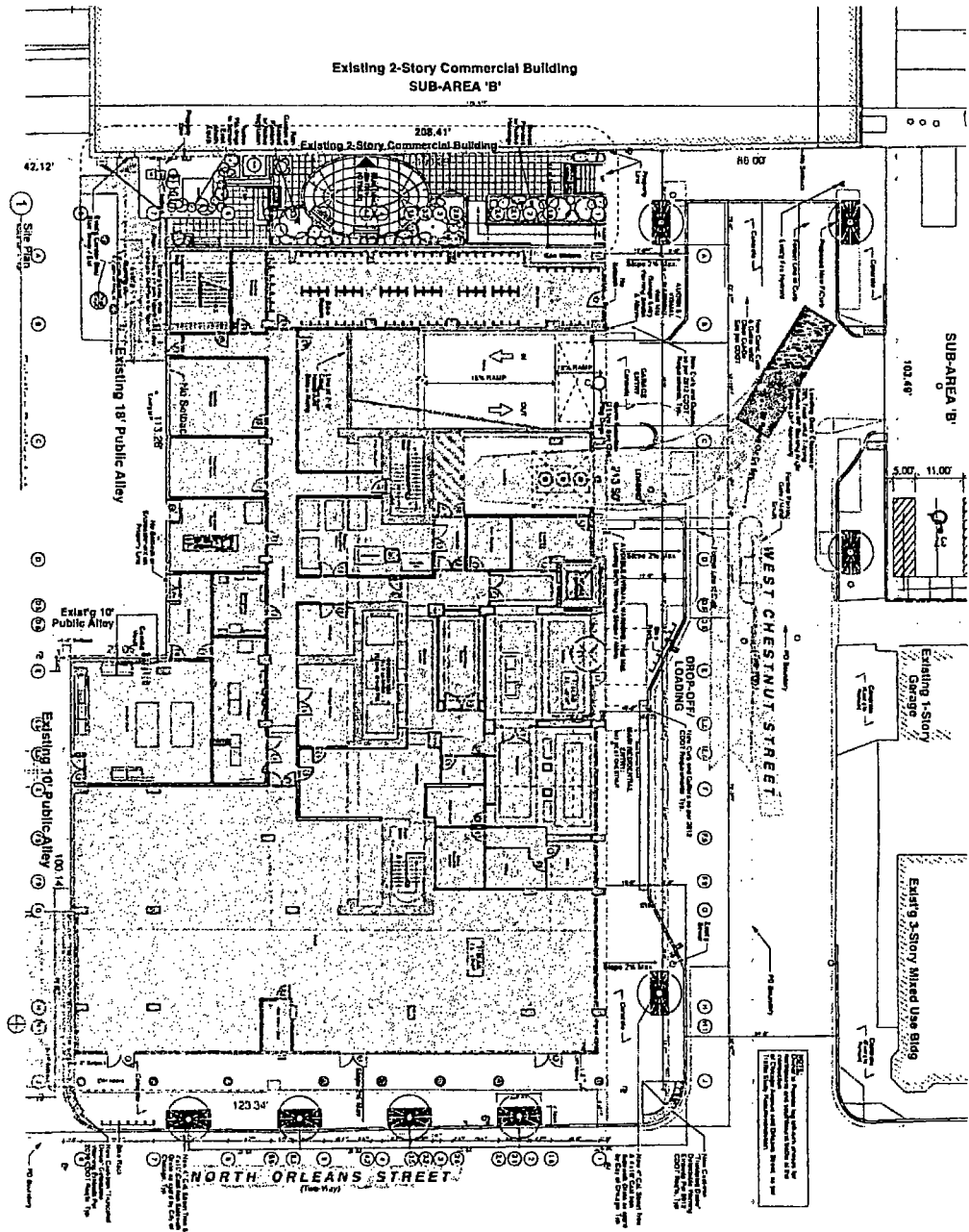
Ut Letters

30th Sep

73627 101

DPP - Project - 10171

Design



AVANT

NO.	DESCRIPTION	DATE
1	...	...
2	...	...
3	...	...
4	...	...
5	...	...
6	...	...
7	...	...
8	...	...
9	...	...
10	...	...

A100



NO.	DESCRIPTION	DATE
1	...	...
2	...	...
3	...	...
4	...	...
5	...	...
6	...	...
7	...	...
8	...	...
9	...	...
10	...	...