



City of Chicago



O2018-7686

Office of the City Clerk Document Tracking Sheet

Meeting Date:	9/20/2018
Sponsor(s):	Reilly (42)
Type:	Ordinance
Title:	Grant(s) of privilege in public way for Qdoba Mexican Eats No. 2447
Committee(s) Assignment:	Committee on Transportation and Public Way

ORDINANCE

Qdoba Mexican Eats #2447

Acct. No. 269555 - 3

Permit No. 1135428

Be It Ordained by the City Council of the City of Chicago:

SECTION 1. Permission and authority are hereby given and granted to Qdoba Mexican Eats #2447, upon the terms and subject to the conditions of this ordinance to maintain and use, as now constructed, four (4) Light Fixture(s) projecting over the public right-of-way adjacent to its premises known as 58 E. Randolph St..

Said Light Fixture(s) at E. Randolph Street measure(s):

Four (4) at three (3) feet in length, point one (.1) feet in width and seventeen point seven five (17.75) feet above grade level.

The location of said privilege shall be as shown on prints kept on file with the Department of Business Affairs and Consumer Protection and the Office of the City Clerk.

Said privilege shall be constructed in accordance with plans and specifications approved by the Department of Transportation (Division of Project Development).

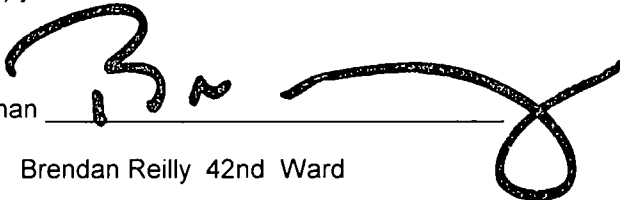
This grant of privilege in the public way shall be subject to the provisions of Section 10-28-015 and all other required provisions of the Municipal Code of Chicago.

The grantee shall pay to the City of Chicago as compensation for the privilege #1135428 herein granted the sum of ninety (\$90.00) per annum in advance

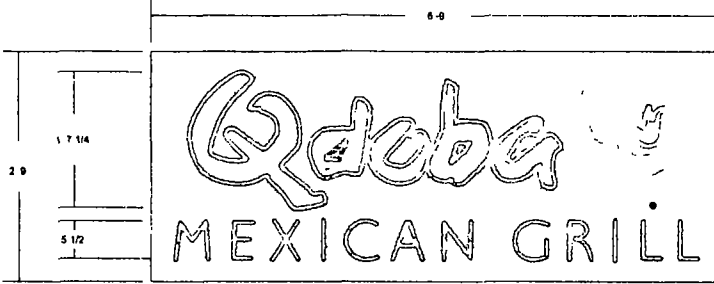
A 25% penalty will be added for payments received after due date.

The permit holder agrees to hold the City of Chicago harmless for any damage, relocation or replacement costs associated with damage, relocation or removal of private property caused by the City performing work in the public way.

Authority herein given and granted for a period of five (5) years from and after 06/11/2018.

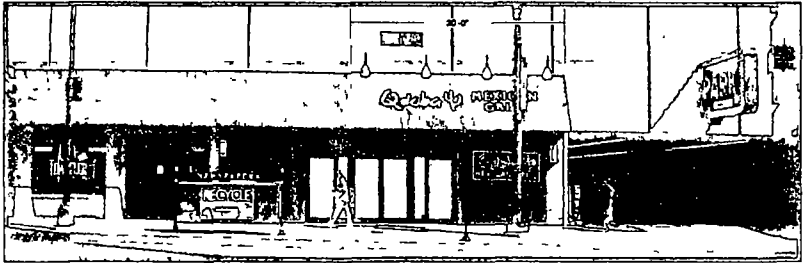
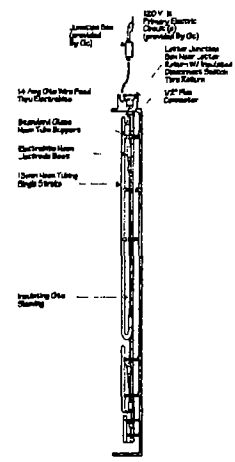
Alderman  _____
Brendan Reilly 42nd Ward

Approved By *[Signature]*
Date 12/6/06



Open Face Hanging Neon Signs
QTY (1) UI Approved And Labeled 3/4 = 1.0

13mm Single Tube Neon 30 Ma Transformer (copy Clear Red Flower Ruby Red, Cactus Voltarc Green)
Neon Mounted To 3/16" Clear Plex W/ Top & Bottom S
Katzman Transformer Mounted On Top Of Top Katman
Sign Suspended By Chain



Conceptual View Of Signage

AD LIGHTS WILL OPERATE TO CLOSEST MATCH CO. ORS INCLUDING PMS, WHERE SPECIFIED. WE CANNOT GUARANTEE MATCHES DUE TO VARYING COMPLEXITY OF SERIALS, MATERIALS AND FINISHES. ALL ILLUSTRATED COLORS MUST BE USED UNLESS OTHERWISE SPECIFIED. 120 VAC PRIMARY POWER IS REQUIRED AND FINAL HOODS BY OTHER SIGN CONTRACTORS REQUIRE DEDICATED HOV, NEUTRAL AND GROUND TERMINATING AT PANEL.

<p>ad light o sign Ph: 303-399-3334 Fax: 303-399-3365</p>	<p>SCALE 3/4" = 1'-0"</p> <p>THIS DESIGN IS THE PROPERTY OF AD LIGHT O SIGN AND IS SUBMITTED FOR YOUR USE IN CONNECTION WITH A PROJECT BEING PLANNED FOR YOU BY AD LIGHT. IT CANNOT BE REPRODUCED EITHER IN WHOLE OR IN PART WITHOUT THEIR WRITTEN CONSENT.</p>	<p>CLIENT Qdoba MEXICAN GRILL</p> <p>LOCATION 58 E Randolph Chicago IL</p> <p>DATE 9-30-06</p> <p>SALESPERSON Catherine Allen</p>	<p>ARTWORK PHASE</p> <p><input type="checkbox"/> CONCEPTUAL</p> <p><input type="checkbox"/> REVISION</p> <p><input type="checkbox"/> FINAL ARTWORK</p> <p><input type="checkbox"/> PRODUCTION</p> <p><input type="checkbox"/> SHOP DRAWINGS</p>	<p>CLIENT APPROVAL _____</p> <p>INITIALS _____ DATE _____</p> <p>PRODUCTION APPROVAL TO MFR _____</p> <p>INITIALS _____ DATE _____</p> <p>DO NOT MANUFACTURE WITHOUT APPROVALS</p> <p>THE BOXES ABOVE MUST BE INITIALED AND DATED PRIOR TO MANUFACTURING</p>
	PG 2 OF 2			
	<p>AD LIGHTS WILL OPERATE TO CLOSEST MATCH CO. ORS INCLUDING PMS, WHERE SPECIFIED. WE CANNOT GUARANTEE MATCHES DUE TO VARYING COMPLEXITY OF SERIALS, MATERIALS AND FINISHES. ALL ILLUSTRATED COLORS MUST BE USED UNLESS OTHERWISE SPECIFIED. 120 VAC PRIMARY POWER IS REQUIRED AND FINAL HOODS BY OTHER SIGN CONTRACTORS REQUIRE DEDICATED HOV, NEUTRAL AND GROUND TERMINATING AT PANEL.</p>			