



City of Chicago



Or2018-528

Office of the City Clerk

Document Tracking Sheet

Meeting Date:	10/31/2018
Sponsor(s):	Waguespack (32)
Type:	Order
Title:	Issuance of permits for sign(s)/signboard(s) at 1730 W Fullerton Ave - 120 sq. ft.
Committee(s) Assignment:	Committee on Zoning, Landmarks and Building Standards

CITY COUNCIL
COMMITTEE ON ZONING, LANDMARKS AND BUILDING STANDARDS

COUNCIL ORDER

RE: Approval of sign over 100 square feet in area or over 24 feet above grade

ORDERED, that the City Council hereby approves the following sign application submitted by:

Applicant*: Riverpoint Plaza

(* The Applicant is the owner of the real property or the business tenant of the real property. Do not list the sign contractor, sign erector, sign company or advertising entity in the above space.)

This Order approves the following sign in accordance with Municipal Code of Chicago Section 13-20-680:

Address of Sign: 1730 W Fullerton Avenue Chicago, IL 606 14

Zoning District: PD437

DOB Sign Permit Application #: 100786172

Sign Details:

1. On-premise OR Off-premise
2. Static sign OR Dynamic-image display sign
3. Number of sign faces 3
4. Projecting over the public way N (Yes or No) If yes, Public Way Use #: _____
5. Dimensions: Length 8 feet 0 inches Height 15 feet 0 inches
Total square feet in area: 120 feet _____ inches
6. Height above grade: 16 feet 6 inches
7. Elevation (side of building or lot where the sign will be erected): North lot
8. Name of Sign Contractor/Erector: Midwest Sign & Lighting, Inc

To be legal, such sign shall comply with all provisions of Title 17 of the Chicago Municipal Code ("Zoning Ordinance") and all other provisions of the Municipal Code governing the permitting, construction and maintenance and removal of signs and sign structures. Failure of the applicant and the applicant's successors to comply shall be grounds for invalidation or revocation of the sign permit.


Alderman

32nd
Ward

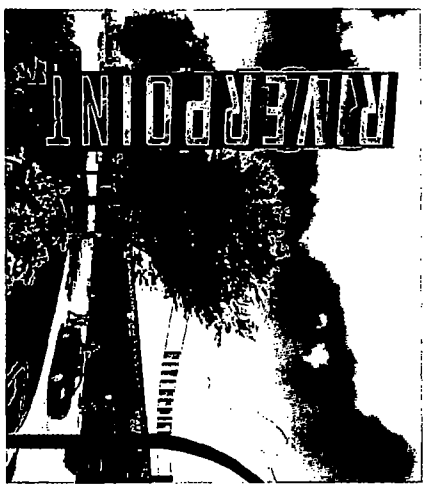
RIVERPOINT SHOPPING CENTER

PYLON SIGNS

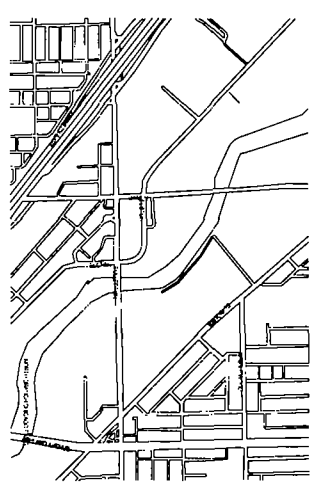
1730 WEST FULLERTON AVENUE
CHICAGO, ILLINOIS 60614

PERMIT AND BID SET

JULY 18, 2018



SITE LOCATION MAP



TEAM CONTACT INFORMATION

INDEX OF DRAWINGS

OWNER
FEDERAL REALTY
1828 E JEFFERSON STREET
ROCKVILLE, MD 20852
(301) 598 8100
(800) 528 8100
CONTACT CHRISTINE MCQUIRE

ARCHITECT
DLR GROUP INC. AN ILLINOIS CORPORATION
333 WEST WACKER DRIVE, SUITE 850
CHICAGO, IL 60606
(312) 382 9980
(312) 780 1018
CONTACT MARINA BERRONES, PA

ELECTRICAL ENGINEERING
DLR GROUP INC. AN ILLINOIS CORPORATION
333 WEST WACKER DRIVE, SUITE 850
CHICAGO, IL 60606
(312) 382 9980
CONTACT JOSH WINDUSKA, PE

STRUCTURAL ENGINEERING
DLR GROUP INC. AN ILLINOIS CORPORATION
333 WEST WACKER DRIVE, SUITE 850
CHICAGO, IL 60606
(312) 382 9980
CONTACT JOSH WINDUSKA, PE

MERZ CORP.
1100 MARSHFIELD ROAD, SUITE 400W
MADISON, IL 60553
(630) 640 2844

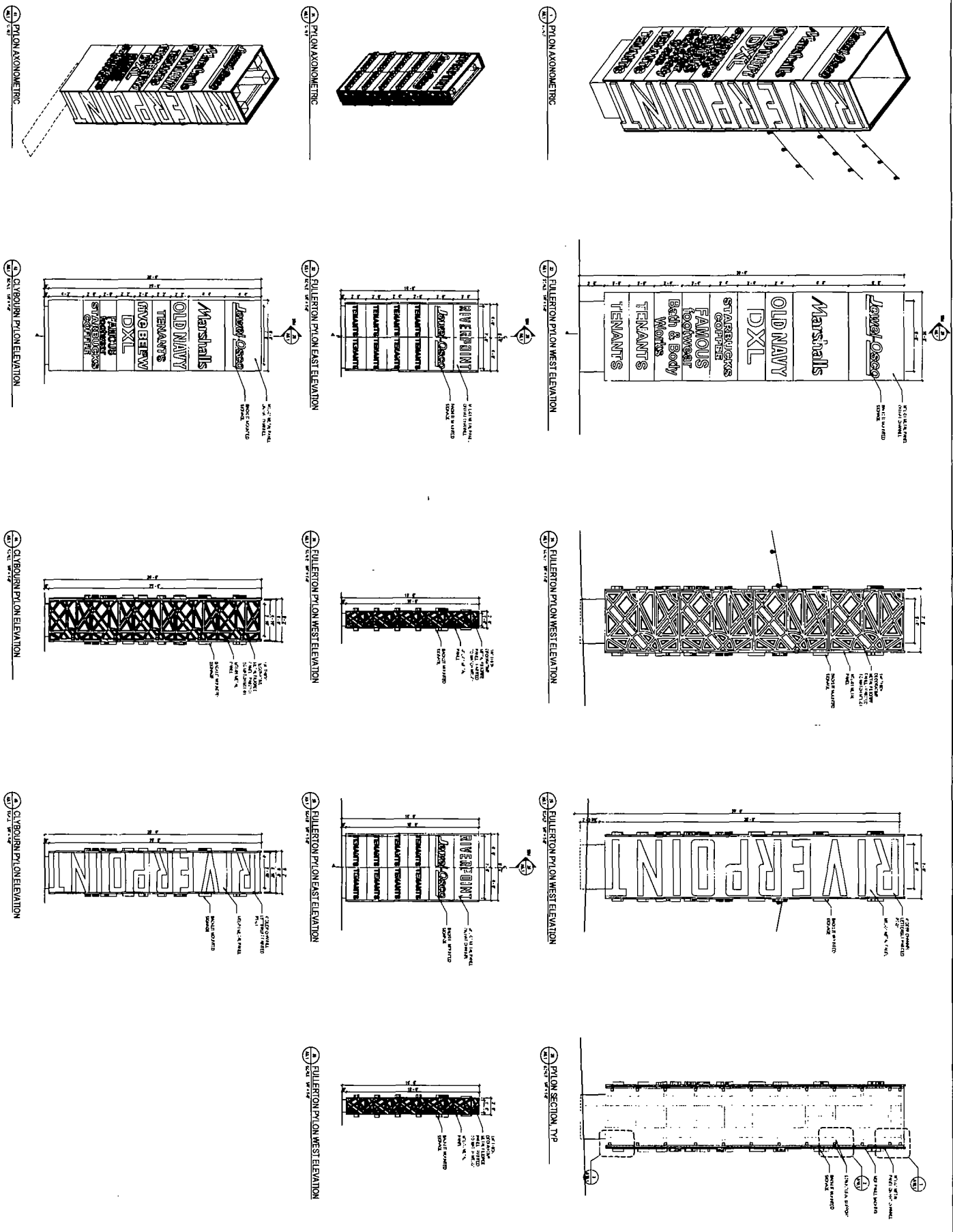
NO.	DESCRIPTION	DATE
01	GENERAL	07/18/18
02	GENERAL	07/18/18
03	GENERAL	07/18/18
04	GENERAL	07/18/18
05	GENERAL	07/18/18
06	GENERAL	07/18/18
07	GENERAL	07/18/18
08	GENERAL	07/18/18
09	GENERAL	07/18/18
10	GENERAL	07/18/18
11	GENERAL	07/18/18
12	GENERAL	07/18/18
13	GENERAL	07/18/18
14	GENERAL	07/18/18
15	GENERAL	07/18/18
16	GENERAL	07/18/18
17	GENERAL	07/18/18
18	GENERAL	07/18/18
19	GENERAL	07/18/18
20	GENERAL	07/18/18
21	GENERAL	07/18/18
22	GENERAL	07/18/18
23	GENERAL	07/18/18
24	GENERAL	07/18/18
25	GENERAL	07/18/18
26	GENERAL	07/18/18
27	GENERAL	07/18/18
28	GENERAL	07/18/18
29	GENERAL	07/18/18
30	GENERAL	07/18/18
31	GENERAL	07/18/18
32	GENERAL	07/18/18
33	GENERAL	07/18/18
34	GENERAL	07/18/18
35	GENERAL	07/18/18
36	GENERAL	07/18/18
37	GENERAL	07/18/18
38	GENERAL	07/18/18
39	GENERAL	07/18/18
40	GENERAL	07/18/18
41	GENERAL	07/18/18
42	GENERAL	07/18/18
43	GENERAL	07/18/18
44	GENERAL	07/18/18
45	GENERAL	07/18/18
46	GENERAL	07/18/18
47	GENERAL	07/18/18
48	GENERAL	07/18/18
49	GENERAL	07/18/18
50	GENERAL	07/18/18
51	GENERAL	07/18/18
52	GENERAL	07/18/18
53	GENERAL	07/18/18
54	GENERAL	07/18/18
55	GENERAL	07/18/18
56	GENERAL	07/18/18
57	GENERAL	07/18/18
58	GENERAL	07/18/18
59	GENERAL	07/18/18
60	GENERAL	07/18/18
61	GENERAL	07/18/18
62	GENERAL	07/18/18
63	GENERAL	07/18/18
64	GENERAL	07/18/18
65	GENERAL	07/18/18
66	GENERAL	07/18/18
67	GENERAL	07/18/18
68	GENERAL	07/18/18
69	GENERAL	07/18/18
70	GENERAL	07/18/18
71	GENERAL	07/18/18
72	GENERAL	07/18/18
73	GENERAL	07/18/18
74	GENERAL	07/18/18
75	GENERAL	07/18/18
76	GENERAL	07/18/18
77	GENERAL	07/18/18
78	GENERAL	07/18/18
79	GENERAL	07/18/18
80	GENERAL	07/18/18
81	GENERAL	07/18/18
82	GENERAL	07/18/18
83	GENERAL	07/18/18
84	GENERAL	07/18/18
85	GENERAL	07/18/18
86	GENERAL	07/18/18
87	GENERAL	07/18/18
88	GENERAL	07/18/18
89	GENERAL	07/18/18
90	GENERAL	07/18/18
91	GENERAL	07/18/18
92	GENERAL	07/18/18
93	GENERAL	07/18/18
94	GENERAL	07/18/18
95	GENERAL	07/18/18
96	GENERAL	07/18/18
97	GENERAL	07/18/18
98	GENERAL	07/18/18
99	GENERAL	07/18/18
100	GENERAL	07/18/18

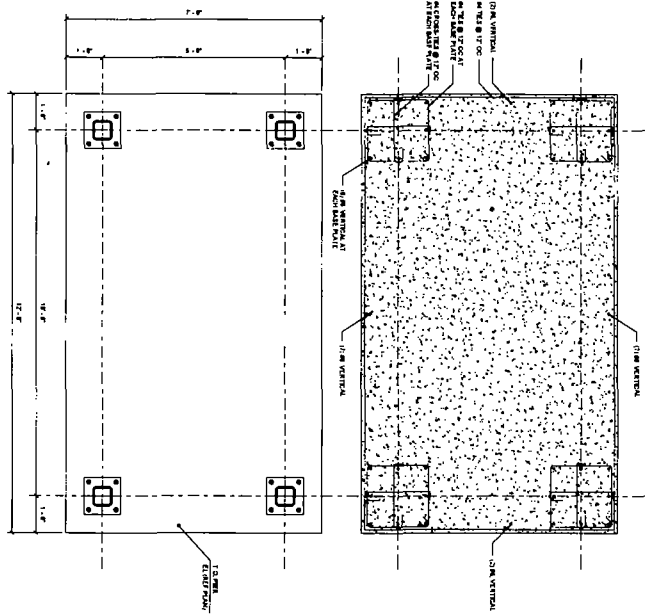
SCOPE OF WORK

NEW CONSTRUCTION OF PYLON SIGNS TO REPLACES EXISTING PYLON SIGNS

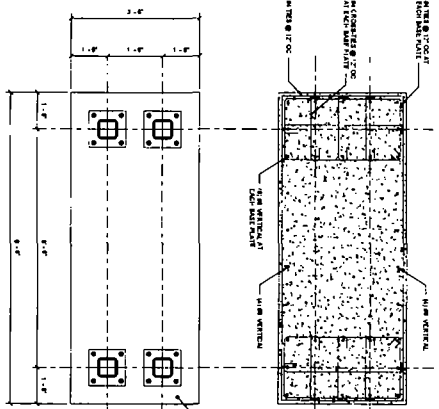
BUILDING CODE SUMMARY

MUNICIPAL CODE OF CHICAGO 2018
CHICAGO ZONING ORDINANCE

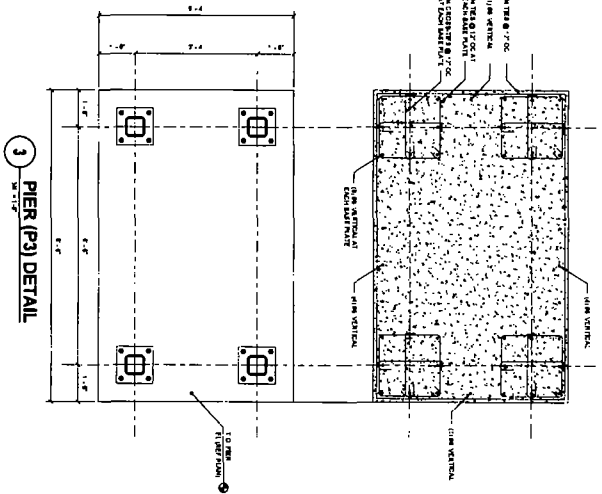




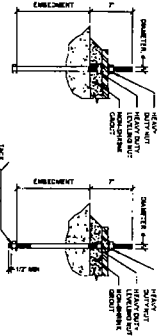
1 PIER (P1) DETAIL
 12'-0" HORIZONTAL
 12'-0" VERTICAL



2 PIER (P2) DETAIL
 12'-0" HORIZONTAL
 12'-0" VERTICAL

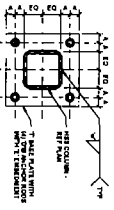


3 PIER (P3) DETAIL
 12'-0" HORIZONTAL
 12'-0" VERTICAL



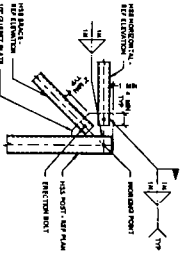
4 TYPICAL ANCHOR ROD
 1/2" DIA.
 12" LONG

1. REINFORCEMENT SHALL BE PLACED IN ALL FOUR DIRECTIONS.
2. REINFORCEMENT SHALL BE PLACED IN ALL FOUR DIRECTIONS.
3. REINFORCEMENT SHALL BE PLACED IN ALL FOUR DIRECTIONS.
4. REINFORCEMENT SHALL BE PLACED IN ALL FOUR DIRECTIONS.
5. REINFORCEMENT SHALL BE PLACED IN ALL FOUR DIRECTIONS.
6. REINFORCEMENT SHALL BE PLACED IN ALL FOUR DIRECTIONS.
7. REINFORCEMENT SHALL BE PLACED IN ALL FOUR DIRECTIONS.
8. REINFORCEMENT SHALL BE PLACED IN ALL FOUR DIRECTIONS.
9. REINFORCEMENT SHALL BE PLACED IN ALL FOUR DIRECTIONS.
10. REINFORCEMENT SHALL BE PLACED IN ALL FOUR DIRECTIONS.

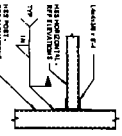


5 HSS COLUMN BASE PLATE DETAIL
 12'-0" HORIZONTAL
 12'-0" VERTICAL

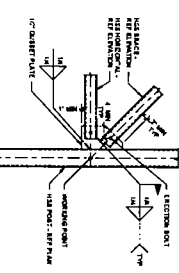
ITEM	DESCRIPTION	QUANTITY	REMARKS
1	ANCHOR RODS	4	
2	BASE PLATE	1	
3	WELDS	1	



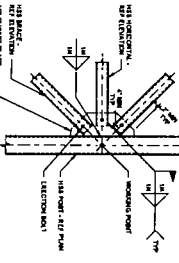
9 BRACE CONNECTION DETAIL
 12'-0" HORIZONTAL
 12'-0" VERTICAL



6 CONNECTION DETAIL
 12'-0" HORIZONTAL
 12'-0" VERTICAL



7 BRACE CONNECTION DETAIL
 12'-0" HORIZONTAL
 12'-0" VERTICAL



8 BRACE CONNECTION DETAIL
 12'-0" HORIZONTAL
 12'-0" VERTICAL

LEGEND
 HORIZONTAL REINFORCEMENT
 VERTICAL REINFORCEMENT